

NOTES

- DO NOT SCALE DRAWING
- VERIFY LOCATIONS AND ELEVATIONS OF EXISTING SERVICES TO BE MAINTAINED OR EXCAVATED. VERIFY LOCATIONS TO OBTAIN LOCATES. CALL (613) 797-8534 BEFORE EXCAVATING
- CONTRACTOR IS TO COMPLY WITH THE CITY OF OTTAWA AND / OR ONTARIO PROVINCIAL STANDARDS (OPS)
- ALL WORK AND UTILITIES SHALL BE IN ACCORDANCE WITH THE CITY OF OTTAWA AND / OR ONTARIO PROVINCIAL STANDARDS (OPS)
- NEW SANITARY AND STORM MANHOLES AND RISERS TO BE 1200 mm AS PER OPS90 701.010
- SANITARY MANHOLE COVER AS PER CITY STANDARD DRAWING 524 (WATER TIGHT)
- NEW CATCH BASINS ARE STANDARD SIZE 600 mm X 600 mm AS PER OPS90 705.010
- LANDSCAPE CB AS PER CITY STANDARD DRAWING 531
- CBMH COVER AS PER CITY STANDARD DRAWING 531
- CATCH BASIN COVER AS PER CITY STANDARD DRAWING 519.1
- REFER TO CITY STD. DWGS. 56, 57 & W17 FOR SEWER AND WATER TRENCH DETAILS
- BARBER AND DEPRESSED CURB AS PER STANDARD DRAWING SC11
- NEW SEWERS TO BE INSULATED WITH 50 mm THICK RIGID STYROFOAM
- LEAKAGE TEST IS REQUIRED ON THE SANITARY SERVICE AS PER OPS45 407. TEST TO BE WITNESSED BY A PROFESSIONAL ENGINEER
- CONTRACTOR IS RESPONSIBLE TO OBTAIN ALL NECESSARY PERMITS PRIOR TO CONSTRUCTION
- RESTORE PAYMENT STRUCTURE, CURBS AND SURFACES ON EXISTING ROADS TO THEIR ORIGINAL CONDITIONS
- REINSTATE BARBER CURB AT EXISTING ENTRANCES
- REFER TO ARCHITECT'S PLANS FOR BUILDING DIMENSIONS AND SITE LAYOUT
- REFER TO ARCHITECT'S PLANS FOR DIMENSIONS AND LAYOUT INFORMATION SHALL CONSTRUCTION
- REFER TO MECHANICAL DRAWINGS FOR INTERNAL CONNECTIONS OF THE WATER, SANITARY AND STORM SERVICES
- AND REMOVE RECEIPTABLE BY CITY FORCES.
- EXCAVATION AND REINSTATEMENT BY CONTRACTOR
- WATER SERVICE DISSECTION AND INSPECTION BY CITY FORCES. ALL DEFLECTIONS AS PER MANUFACTURER'S SPECIFICATIONS
- MINIMUM COVER TO BE 2.4 m (IF NOT ACHIEVED), PROVIDE THERMAL INSULATION AS PER CITY STANDARDS)
- FIRE HYDRANT LOCATION AND INSTALLATION AS PER STD. DWGS W18 AND W19
- THIS PLAN SHOULD BE READ IN CONNECTION WITH THE SITE PLAN, GRADING PLAN, SERVING AND SWM BRIEF AND THE GEOTECHNICAL REPORT

LEGEND

- 71.60 PROPOSED ELEVATION
- 70.50 EXISTING ELEVATION
- 63.35TC TOP OF CURB
- DIRECTION OF FLOW
- UP UTILITY POLE
- DC DEPRESSED CURB
- EX STORM SEWER
- EX SANITARY SEWER
- EX WATERMAIN
- NEW STORM SEWER
- NEW SANITARY SEWER
- NEW WATER SERVICE
- PROPERTY LINE
- U/G HYDRO
- SECURITY FENCE
- LIGHT DUTY ASPHALT
- HEAVY DUTY ASPHALT

BENCH MARK

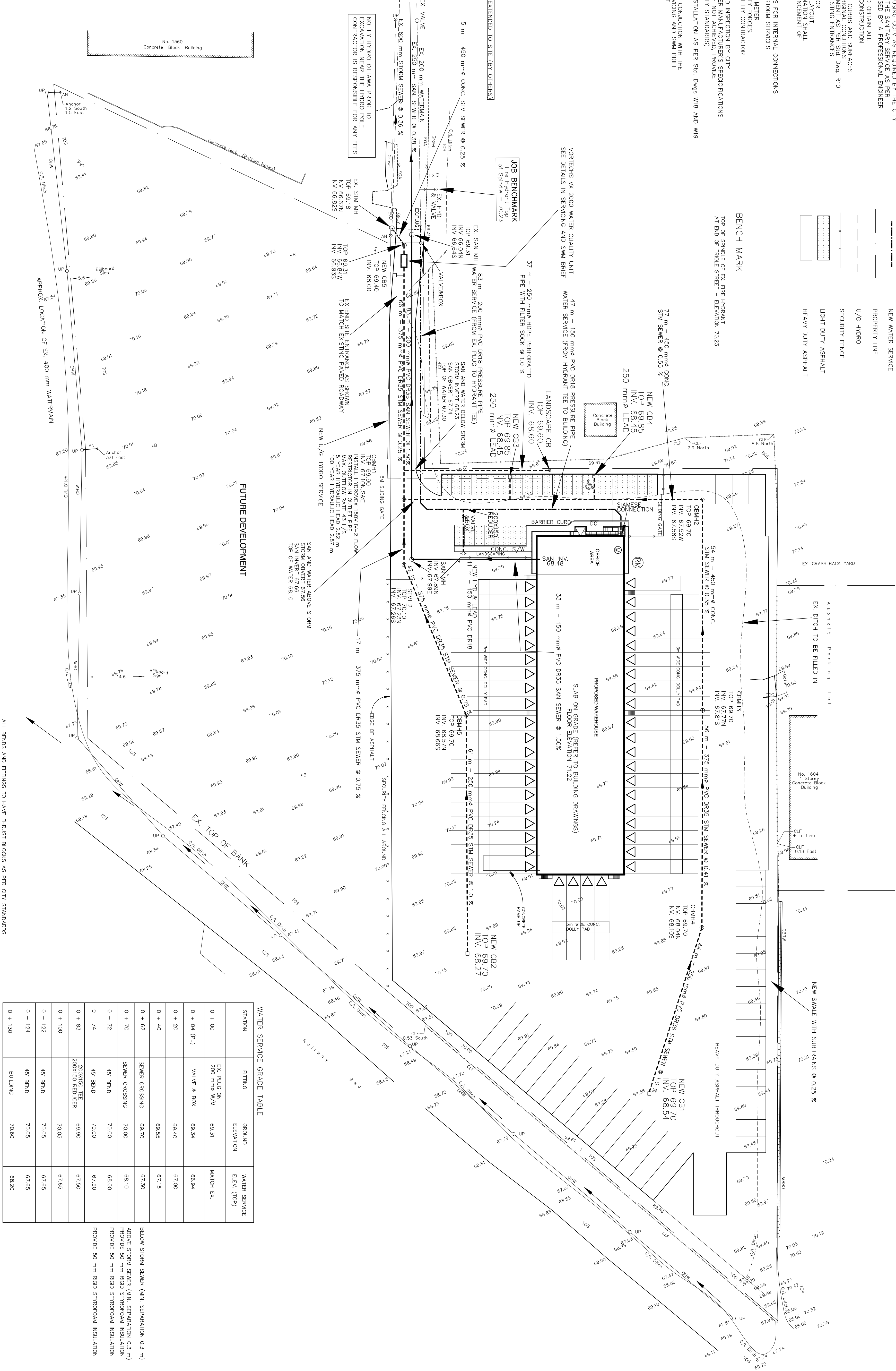
TOP OF SPINDLE OF EX. FIRE HYDRANT  
N END OF THOLE SHEET - ELEVATION 70.23

GAS MAIN TO BE EXTENDED TO SITE (BY OTHERS)

**JOB BENCHMARK**  
Fire Hydrant Top of Spindle = 70.23

NOTIFY HYDRO OTTAWA PRIOR TO EXCAVATION NEAR THE HYDRO POLE EXCAVATION IS RESPONSIBLE FOR ANY FEES

VERTICES W/ 2000 WATER QUALITY UNIT  
SEE DETAILS IN SERVING AND SWM BRIEF



WATER SERVICE GRADE TABLE

| STATION     | FITTING                        | GROUND ELEVATION | WATER SERVICE ELEV. (705) |
|-------------|--------------------------------|------------------|---------------------------|
| 0 + 00      | EX. PLUG ON 200 mm W/M         | 69.31            | MATCH EX.                 |
| 0 + 04 (PL) | VALVE & BOX                    | 69.34            | 66.94                     |
| 0 + 20      |                                | 69.40            | 67.00                     |
| 0 + 40      |                                | 69.55            | 67.15                     |
| 0 + 62      | SEWER CROSSING                 | 69.70            | 67.30                     |
| 0 + 70      | SEWER CROSSING                 | 70.00            | 68.10                     |
| 0 + 74      | 45° BEND                       | 70.00            | 68.00                     |
| 0 + 74      | 45° BEND                       | 70.00            | 67.90                     |
| 0 + 83      | 200X150 Tee<br>200X150 REDUCER | 69.90            | 67.50                     |
| 0 + 100     |                                | 70.05            | 67.55                     |
| 0 + 122     | 45° BEND                       | 70.05            | 67.65                     |
| 0 + 124     | 45° BEND                       | 70.05            | 67.65                     |
| 0 + 130     | BUILDING                       | 70.60            | 68.20                     |

BELOW STORM SEWER (MIN. SEPARATION 0.3 m)  
ABOVE STORM SEWER (MIN. SEPARATION 0.3 m)  
PROVIDE 50 mm RIGID STYROFOAM INSULATION  
PROVIDE 50 mm RIGID STYROFOAM INSULATION

Registered Owner:

**REIMER WORLD LOGISTICS CORP.**  
SUITE 2900, 201 PORTAGE AVENUE  
WINNIPEG, MANITOBA, R3B 3K6  
Tel: (431) 469-1933  
Cell: (416) 878-7094  
e-mail: reimerw@reimerworldlogistics.com

Project Manager:

**ARGUE CONSTRUCTION LTD.**  
105 WILLOWDALE RD.  
SCARBOROUGH, ONTARIO M1V 3Y7  
Tel: (613) 831-7044  
Tel: (613) 831-8344  
e-mail: argue@argueconstruction.ca

LEGAL DESCRIPTION:

ALL OF LOTS 64 AND 70 AND PART OF LOTS 55, 56, 57, 58, 59, 65, 69 AND 71 AND PARTS OF THOLE STREET (As Cleared by Judge's Order Inst. LT1225616 and by By-Law 2004-21 Inst. OC896469) REGISTERED PLAN 68 CITY OF OTTAWA  
PREPARED BY ANNIS OSULLIVAN, VOLLEBERG ONTARIO LAND SURVEYORS JANUARY 4, 2006

Civil Engineer:

**CAPITAL ENGINEERING GROUP LTD.**  
110 DOWSETT WAY  
OTTAWA, ONTARIO K1R 8S5  
Tel: (613) 759-0776  
Fax: (613) 759-7302  
e-mail: ceg@capitaleng.com

**LEONARD KOFFMAN**  
ARCHITECT  
Suite 301, 1300 Cherry Avenue  
OTTAWA, Ontario K1Z 1Z2  
Phone (613) 739-2311  
Cell (613) 739-3321  
Email: leonard@leoffman.com

PROJECT: **APEX MOTOR EXPRESS TRUCK TERMINAL 1399 ST. LAURENT BLVD. OTTAWA, ON.**

DRAWING TITLE: **SERVING PLAN**

DATE: DEC. 3, 28 / 14  
SCALE: 1 : 500

PROJECT N°: **1408**  
DRAWING N°: **G1**

PROFESSIONAL ENGINEER  
BRANCH OF OTTAWA

May 1/15  
LIAMNE NAJOU  
Professional Engineer