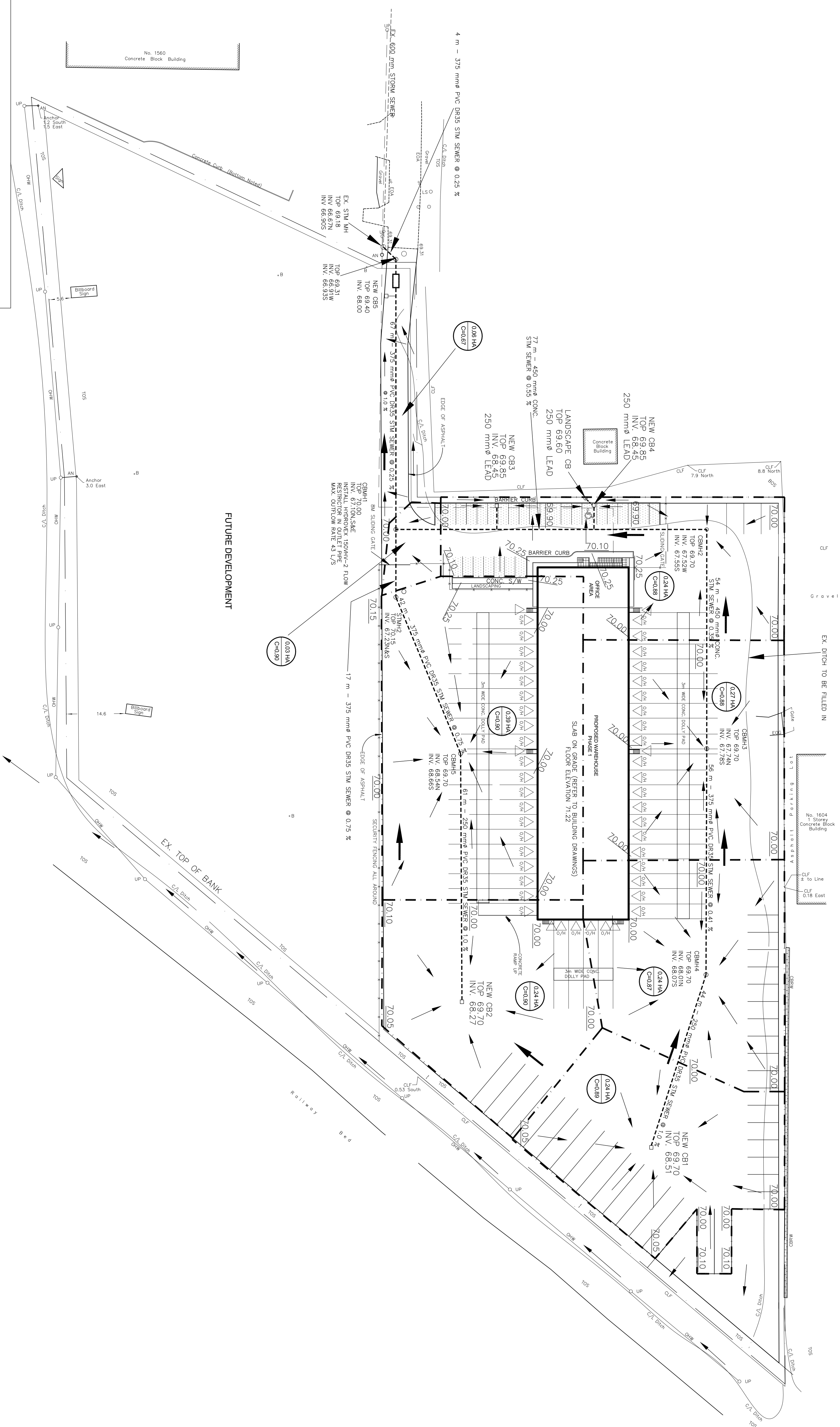


LEGEND

- 71.60 PROPOSED ELEVATION
- 83.35TC TOP OF CURB
- DIRECTION OF FLOW
- UTILITY POLE
- DEPRESSED CURB
- STORM SEWER
- DRAINAGE AREA LIMITS
- DRAINAGE AREA IN HECTARES
- RUNOFF COEFFICIENT
- OVERLAND FLOW ROUTE



GENERAL NOTE:
 THE POSITION OF ALL POLE LINES, CONDUITS, SEWERS AND OTHER UNDERGROUND AND OVERGROUND UTILITIES AND STRUCTURES IS NOT NECESSARILY SHOWN ON THESE DRAWINGS, AND WHERE SHOWN, THE ACCURACY OF THE POSITION OF SUCH UTILITIES AND STRUCTURES IS NOT GUARANTEED. BEFORE STARTING THE WORK, DETERMINE THE EXACT LOCATION OF ALL SUCH UTILITIES AND STRUCTURES AND ASSUME ALL LIABILITY FOR DAMAGE TO THEM. SURVEY BY FAIRHALL WOFFAT & WOODLAND LIMITED.

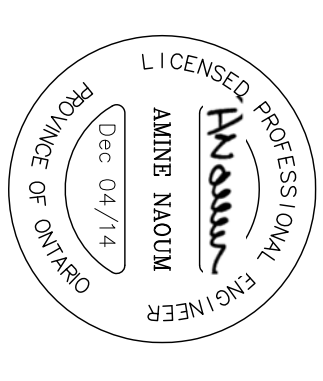
Registered Owner:
REIMER WORLD LOGISTICS CORP.
 SUITE 2900, 201 PORTAGE AVENUE
 WINNIPEG, MANITOBA, R3B 3K6
 Tel: (416) 778-7024
 e-mail: reimer@reimerworld.com

Project Manager:
ARGUE CONSTRUCTION LTD.
 109, WILLOWDALE RD.
 MISSISSAUGA, ONTARIO
 Tel: (416) 831-6344
 Fax: (416) 831-6344
 e-mail: argue@argueconstruction.ca

LEGAL DESCRIPTION:
 ALL OF LOTS 64 AND 70 AND
 PART OF LOTS 55, 56, 57, 58, 59,
 65, 69 AND 71
 AND PARTS OF THOLE STREET
 (As Closed by Judges Order Insl. LT1225616
 and by By-Law 2004-21 Insl. OC396489)
 REGISTERED PLAN 63
 CITY OF OTTAWA

PREPARED BY
ANNIS OSULLIVAN, VOLLEBECK ONTARIO
 LAND SURVEYORS
 JANUARY 4, 2006

Civil Engineer:
CAPITAL ENGINEERING GROUP LTD.
 119 DOSSLETTER WAY
 MISSISSAUGA, ONTARIO L4X 1L3
 Tel: (416) 739-0776
 Fax: (416) 739-7202
 e-mail: ceg@cegroup.com



REV. NO.	DESCRIPTION

IT IS THE RESPONSIBILITY OF THE APPROPRIATE DIMENSIONS ON SITE AND REPORT ALL ERRORS AND/OR OMISSIONS TO THE ARCHITECT. ALL FIELD CORRECTIONS AND CHANGES WITH ALL FIELD NOTATIONS AND DIMENSIONS MUST BE MADE ON THE ORIGINAL DRAWINGS. THIS DRAWING MAY NOT BE USED FOR CONSTRUCTION. COPYRIGHT RESERVED. THIS DRAWING IS THE EXCLUSIVE PROPERTY OF LEONARD & KOFFMAN ARCHITECTS AND SHALL NOT BE USED WITHOUT THE ARCHITECT'S CONSENT.

LEONARD & KOFFMAN
 ARCHITECT
 Suite 301, 1300 Osgoode Avenue
 OTTAWA, Ontario K1Z 7L2
 Phone (613) 729-2311
 Fax: (613) 729-0776
 E-mail: leonard@leand-koff.com

OWNER:
REIMER PROPERTIES INC.

PROJECT:
ARPEX MOTOR EXPRESS TRUCK TERMINAL 1399 ST. LAURENT BLVD. OTTAWA, ON.

DRAWING TITLE:
POST DEVELOPMENT DRAINAGE AREAS PLAN

DRAWING AND DATE:
 DEC. 4/14

SCALE:
 1 : 500

PROJECT NO:
1408

PROJECT NORTH

REVISION N°

G3