

This drawing, as an instrument of service, is provided by and is the property of Turner Fleischer Architects Inc. The contractor must verify and accept responsibility for all dimensions and conditions on site and must notify Turner Fleischer Architects Inc. of any variations from the supplied information. This drawing is not to be scaled. The architect is not responsible for the accuracy of survey, structural, mechanical, electrical, etc., information shown on this drawing. Refer to the appropriate consultant's drawings before proceeding with the work. Construction must conform to all applicable codes and requirements of authorities having jurisdiction. The contractor working from drawings not specifically marked "For Contractor" must assume full responsibility and bear costs for any corrections or damages resulting from his work.

01	2014-10-16	ISSUED FOR SPA	TS
02			
03			
04			
05			
06			
07			
08			
09			
10			
11			
12			
13			
14			
15			
16			
17			
18			
19			
20			
21			
22			
23			
24			
25			
26			
27			
28			
29			
30			
31			
32			
33			
34			
35			
36			
37			
38			
39			
40			
41			
42			
43			
44			
45			
46			
47			
48			
49			
50			

TURNER FLEISCHER
 TURNER FLEISCHER ARCHITECTS INC.
 67 Leasmill Road Toronto ON Canada M5S 2T8
 Telephone (416) 435-2323 Facsimile (416) 435-6777
 turnerfleischer.com

CREATE
 Architecture Planning & Design LLC
 The Chrysler Building
 405 Lexington Avenue, Tower Suite 70
 New York, NY 10174
 Phone: (212) 297-0880
 www.createworldwide.com

IBI
 7th Floor - 55 St. Clair Avenue West
 Toronto ON M4Y 2Y7 Canada
 Tel +1 416 596 1930
 Fax +1 416 596 0544

h HAMMERSCHLAG + JOFFE INC.
 60 Leasmill Road Toronto,
 Ontario Canada M5S 2T8
 T: (416) 444-9263
 F: (416) 444-1463
 E: owj@hampj.com

FOTENN PLANNING & URBAN DESIGN
 223 McLeod Street | Ottawa, ON | K2P 0Z8
 T: 613.730.5709 ext 234 | F: 613.730.1136

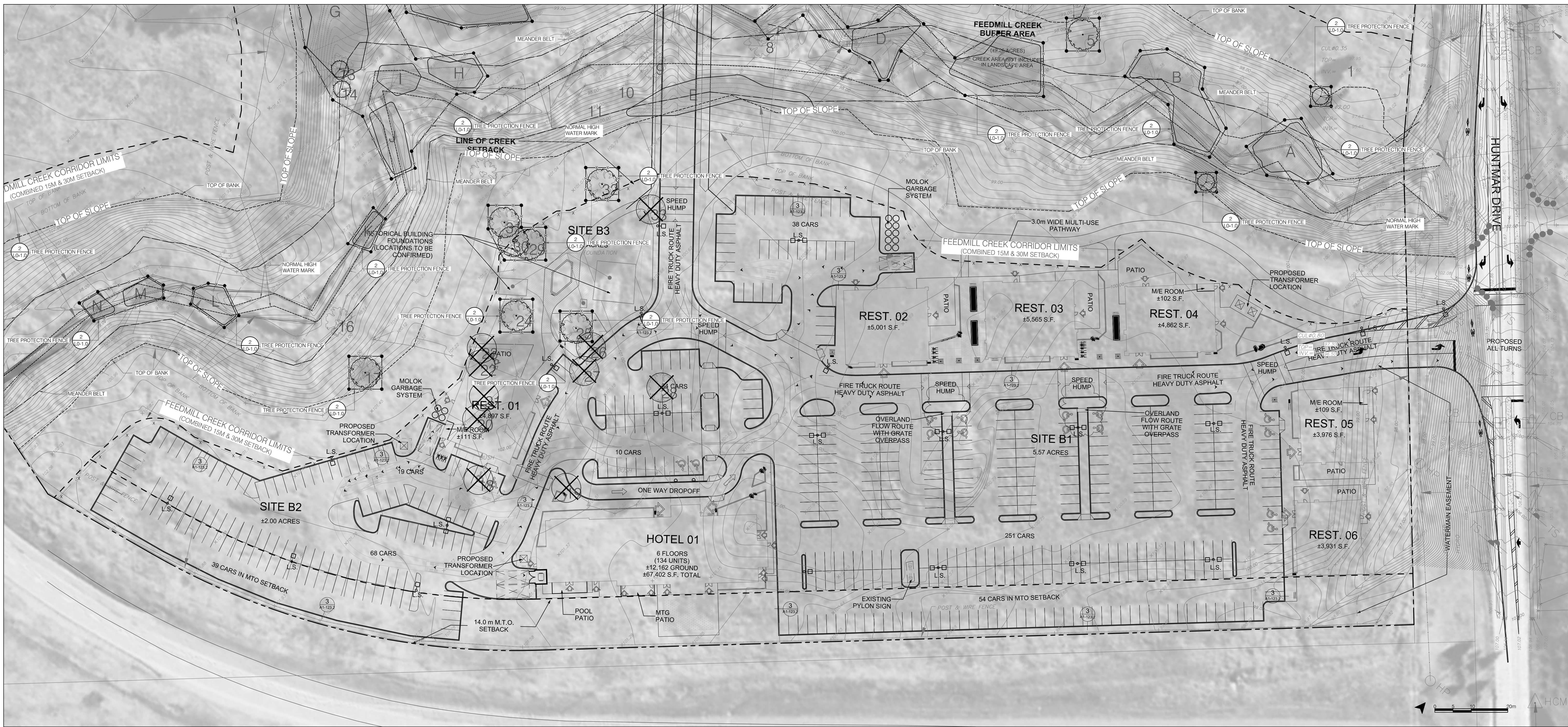
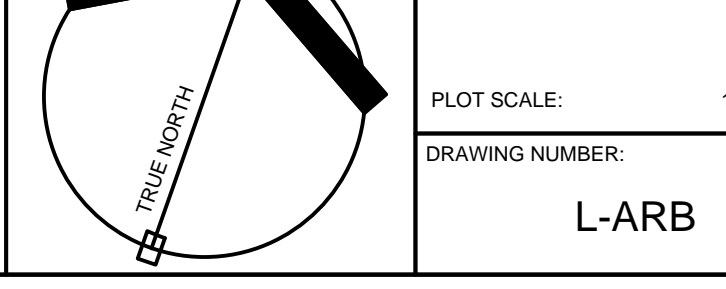
RIO CAN
 RioCan Real Estate Investment Trust
 2300 Yonge Street
 Suite 500
 Toronto, Ontario
 M4P 1E4
 (416) 646 8330

TangerOutlets
 Tanger Factory Outlet Centers, Inc.
 3200 Northline Avenue
 Suite 360
 Greensboro, NC 27408
 1 (336) 292-3010

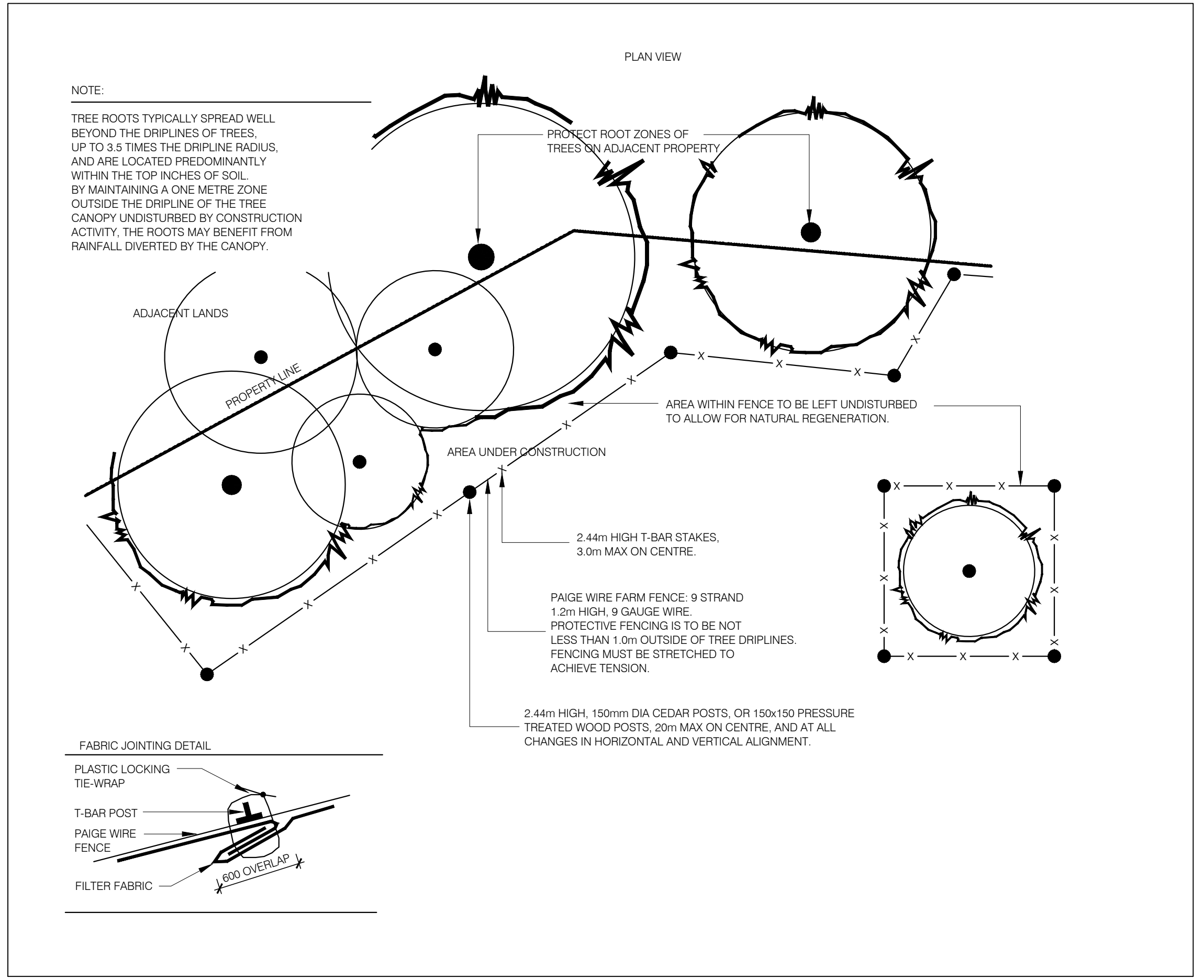
TANGER OUTLETS KANATA

TREE REMOVAL AND PROTECTION PLAN

PROJECT NO: 37596 DATE: DECEMBER 2014
 DRAWN BY: TS SCALE: 1:500
 CHECKED BY: TM FILE NAME: 2014-10-16-37596-TS.dwg
 PLOT SCALE: 1:1
 DRAWING NUMBER: L-ARB



1 TREE REMOVAL AND PROTECTION PLAN
 LO-1.0 1:500



2 TREE PROTECTION FENCE DETAIL
 LO-1.0 NTS

TREE PROTECTION PLAN NOTES:

TREE PROTECTION ZONE:
 NOTE:
 TREE PROTECTION ZONE (TPZ) IS DETERMINED BY THE CRITICAL ROOT ZONE (CRZ). THE CRZ IS ESTABLISHED AS BEING 10 CENTIMETRES FROM THE TRUNK OF A TREE FOR EVERY CENTIMETRE OF TRUNK DIAMETER. THE TRUNK DIAMETER IS MEASURED AT A HEIGHT OF 1.2 METRES FOR TREES OF 15 CENTIMETRES DIAMETER AND GREATER AND AT A HEIGHT OF 0.3 METRES FOR TREES OF LESS THAN 15 CENTIMETRES DIAMETER.

NO CONSTRUCTION ACTIVITY INCLUDING GRADE CHANGES, SURFACE TREATMENTS OR EXCAVATIONS OF ANY KIND IS PERMITTED WITHIN THE AREA IDENTIFIED ON THIS PLAN AS A TREE PROTECTION ZONE (TPZ). NO DAMAGE TO ROOT ZONE, TRUNK, BRANCHES OR ROOT CUTTING IS PERMITTED. NO STORAGE OF MATERIALS OR FILL IS PERMITTED WITHIN THE TPZ. NO EXHAUST FUMES, MOVEMENT OR STORAGE OF VEHICLES OR EQUIPMENT IS PERMITTED WITHIN THE TPZ. SIGNS, NOTICES OR POSTERS ARE NOT TO BE ATTACHED OR ADHERED TO ANY TREE. AREAS IDENTIFIED AS A TPZ MUST REMAIN UNDISTURBED AT ALL TIMES.

TREE PROTECTION BARRIERS:
 NOTE - FOR TREES ON PRIVATE PROPERTY SITUATED ON OR ADJACENT TO CONSTRUCTION SITES:
 TREE PROTECTION BARRIERS MUST BE INSTALLED AROUND TREES TO BE PROTECTED USING 2.44M (8 FT) HIGH PLYWOOD CLAD HOARDINGS OR AN EQUIVALENT APPROVED BY URBAN FORESTRY SERVICES. PROTECTION BARRIERS SHALL BE PLACED AT A DISTANCE NOT CLOSER THAN THE TPZ INDICATED. SUPPORTS AND BRACING TO SAFELY SECURE THE BARRIER SHOULD BE OUTSIDE THE TREE PROTECTION ZONE (TPZ). ALL SUCH SUPPORTS AND BRACING SHOULD MINIMIZE DAMAGE TO ROOTS OUTSIDE THE TPZ WHERE THE BRANCHES OF A TREE ARE LOWER THAN 2.4M (8 FT). THE HOARDING SHALL WITHIN THE TPZ, BE A HEIGHT TO JUST BELOW SUCH BRANCHES.

NOTE - FOR CITY OWNED TREES:
 TREE PROTECTION BARRIERS FOR TREES SITUATED ON THE CITY ROAD ALLOWANCE WHERE VISIBILITY MUST BE MAINTAINED, CAN BE 1.2M (4 FT) HIGH AND CONSIST OF ORANGE PLASTIC WEBB FENCING ON A 2" X 4" WOOD FRAME. ALL SUPPORTS AND BRACING USED TO SECURE THE BARRIER SHOULD BE LOCATED OUTSIDE THE TPZ. ALL SUPPORTS AND BRACING SHOULD MINIMIZE DAMAGE TO ROOTS OUTSIDE THE TPZ WHERE SOME FILL OR EXCAVATE HAS TO BE TEMPORARILY LOCATED NEAR A TREE PROTECTION BARRIER, PLYWOOD MUST BE USED TO ENSURE NO MATERIAL ENTERS THE TPZ.

GENERAL NOTE:
 CONTRACTORS MUST BE FAMILIAR WITH THE TREES AND NATURAL AREAS PROTECTION BY LAW AND THE ROAD ACTIVITY BY LAW PRIOR TO COMMENCING ANY WORK AROUND TREES.

THE CONTRACTOR IS RESPONSIBLE TO VERIFY GRADES, LINES, LEVELS, DIMENSIONS AND EXISTING CONDITIONS, AND REPORT ANY ERRORS, OMISSIONS, OR INCONSISTENCIES TO THE LANDSCAPE ARCHITECT BEFORE COMMENCING WORK.
 THE TREES AND NATURAL AREAS PROTECTION BY LAW APPLIES TO ALL CONTRACTORS WORKING FOR A PUBLIC OR PRIVATE UTILITY.

CONTRACTOR TO LOCATE ALL UNDERGROUND UTILITIES.
 PRIOR TO THE COMMENCEMENT OF ANY SITE ACTIVITY THE TREE PROTECTION BARRIERS SPECIFIED ON THIS PLAN MUST BE INSTALLED AND WRITTEN NOTICE PROVIDED TO CITY OF OTTAWA. THE TREE PROTECTION BARRIERS MUST REMAIN IN EFFECTIVE CONDITION UNTIL ALL SITE ACTIVITIES INCLUDING LANDSCAPING ARE COMPLETE.
 ARBORCULTURAL WORK NOTE:
 ANY ROOTS OR BRANCHES WHICH EXTEND BEYOND THE TREE PROTECTION ZONES INDICATED ON THIS PLAN WHICH REQUIRE PRUNING, MUST BE PRUNED BY A QUALIFIED ARBORIST OR OTHER TREE PROFESSIONAL AS APPROVED BY URBAN FORESTRY SERVICES. ALL PRUNING OF TREE ROOTS AND BRANCHES MUST BE IN ACCORDANCE WITH GOOD ARBORCULTURAL STANDARDS. THE ARBORIST/TREE PROFESSIONAL MUST CONTACT URBAN FORESTRY SERVICES NO LESS THAN 48 HOURS PRIOR TO CONDUCTING ANY SPECIFIED WORK.

TREE AND SHRUB REMOVAL NOTES:
 ALL TREES AND SHRUBS WITHIN THE PROPERTY LINE MUST BE REMOVED EXCEPT THOSE ARE INDICATED WITHIN THE TREE PROTECTION FENCE ON LO-1.0. IT IS CONTRACTORS RESPONSIBILITY TO CONDUCT SITE VISITS PRIOR TO BIDDING.
 ALL TREES AND SHRUBS INDICATED TO BE REMOVED MUST ALSO INCLUDE FULL REMOVAL OF ALL STUMPS AND MAJOR LATERAL ROOTING STRUCTURES.
 ALL ITEMS DESIGNATED TO BE REMOVED ARE TO BE DISPOSED OFF SITE EXCEPT OTHERWISE INDICATED.
 PRUNING AND CLEAN-UP OF EXISTING VEGETATION AND PLANTING BEDS TO CONFORM WITH TREE PRUNING SPECIFICATIONS.

Key	Botanical Name	Common Name	DBH (cm)	CRZ (cm)	Condition	Action	Notes
1	Thuja occidentalis	Eastern White Cedar	31.0	270.0	Good	REMOVED IN PHASE ONE	Regrading in area for stormwater
2	Thuja occidentalis	Eastern White Cedar	27.0	270.0	Good	PROTECT	Provides habitat and wind protection
3	Thuja occidentalis	Eastern White Cedar	44.0	440.0	Good	PROTECT	Provides habitat and wind protection
4	Ulmus procera	English Elm	31.0	Fair	REMOVED IN PHASE ONE	Regrading in area for stormwater pond	
5	Malus sp.	Crabapple	22.0	220.0	Good	PROTECT	Provides habitat and food
6	Ulmus procera	English Elm	33.0	Fair	REMOVED IN PHASE ONE	Regrading in area for stormwater pond	
7	Acer saccharum	Sugar Maple	63.0	630.0	Good	PROTECT	Healthy mature specimen worth saving
8	Ulmus procera	English Elm	55.0	Good	REMOVED IN PHASE ONE	Regrading in area for stormwater	
9	Fraxinus sp.	Ash	41.0	Good	REMOVED IN PHASE ONE	Regrading in area for new bridge	
10	Fraxinus sp.	Ash	37.0	Good	REMOVED IN PHASE ONE	Regrading in area for new bridge	
11	Fraxinus sp.	Ash	52.0	Good	REMOVED IN PHASE ONE	Regrading in area for new bridge	
12	Malus sp.	Crabapple	26.0	Good	REMOVED IN PHASE ONE	Regrading in area for new bridge	
13	Pinus strobus	White Pine	57.0	570.0	Fair-Poor	PROTECT	Retain for snag and habitat
14	Thuja occidentalis	Eastern White Cedar	41.0	410.0	Good	PROTECT	Provides habitat and wind protection
15	Thuja occidentalis	Eastern White Cedar	35.0	350.0	Good	PROTECT	Provides habitat and wind protection
16	Ulmus procera	English Elm	25.0	Poor	REMOVED IN PHASE ONE	Near dead; not worth saving	
17	Malus sp.	Crabapple	39.0	390.0	Good	PROTECT	Provides habitat and food
18	Acer saccharum	Sugar Maple	57.0	Good	REMOVE	Regrading in area for new hotel parking lot	
19	Acer negundo	Manitoba Maple	67.0	Good	REMOVE	Regrading in area for new hotel parking lot	
20	Acer saccharum	Sugar Maple	56.0	Good	REMOVE	Regrading in area for new hotel parking lot	
21	Acer saccharum	Sugar Maple	52.0	Good	REMOVE	Regrading in area for new hotel parking lot	
22	Acer saccharum	Sugar Maple	49.0	Good	REMOVE	Regrading in area for new hotel parking lot	
23	Acer saccharum	Sugar Maple	67.0	Good	REMOVE	Regrading in area for new hotel parking lot	
24	Acer negundo	Manitoba Maple	54.0	540.0	Good	PROTECT	Healthy mature specimen worth saving
25	Acer negundo	Manitoba Maple	52.0	520.0	Good	PROTECT	Regrading in area for new hotel parking lot
26	Acer negundo	Manitoba Maple	55.0	Good	REMOVE	Regrading in area for new hotel parking lot	
27	Acer negundo	Manitoba Maple	39.0	Good	REMOVE	Regrading in area for new hotel parking lot	
28	Acer negundo	Manitoba Maple	43.0	Good	REMOVE	Regrading in area for new hotel parking lot	
29	Acer negundo	Manitoba Maple	36.0	360.0	Good	PROTECT	Healthy mature specimen worth saving
30	Acer negundo	Manitoba Maple	29.0	Good	PROTECT	Healthy mature specimen worth saving	
31	Acer negundo	Manitoba Maple	33.0	360.0	Good	PROTECT	Healthy mature specimen worth saving
32	Acer negundo	Manitoba Maple	36.0	360.0	Good	PROTECT	Healthy mature specimen worth saving
33	Acer negundo	Manitoba Maple	45.0	Good	REMOVE	Regrading in area for new hotel access	

Key	Existing Species	Existing Growth Habit	Age	Condition	Action	Notes	
A	V. lentago, A. incana, C. sericea	Mixed Shrub Thicket	Growing	shown	Good	PROTECT	Provides habitat and food and soil stability
B	V. lentago, A. incana, C. sericea	Mixed Shrub Thicket	Growing	shown	Good	PROTECT	Provides habitat and food and soil stability
C	V. lentago, A. incana, C. sericea	Mixed Shrub Thicket	Mature	shown	Good	PROTECT	Provides habitat and food and soil stability
D	Primarily Alnus incana	Grove of Speckled Alder	Growing	shown	Good	PROTECT	Provides habitat and food and soil stability
E	Primarily Alnus incana	Grove of Speckled Alder	Young	shown	Good	REMOVED IN PHASE ONE	Regrading in area for new bridge
F	Primarily Thuja occidentalis	Grove of White Cedar	Growing	shown	Good	PROTECT	Provides habitat and food and soil stability
G	T. occidentalis, A. negundo	Mixed Shrub Thicket	Growing	shown	Good	PROTECT	Provides habitat and food and soil stability
H	Matteuccia struthiopteris	Patch of Ostrich Fern	Growing	shown	Good	PROTECT	Provides flood protection
I	Primarily Alnus incana	Grove of Speckled Alder	Young	shown	Good	PROTECT	Provides habitat and food and soil stability
J	Primarily Alnus incana	Grove of Speckled Alder	Young	shown	Good	PROTECT	Provides habitat and food and soil stability
K	Primarily Alnus incana	Grove of Speckled Alder	Young	shown	Good	PROTECT	Provides habitat and food and soil stability
L	Primarily Alnus incana	Grove of Speckled Alder	Young	shown	Good	PROTECT	Provides habitat and food and soil stability
M	Primarily Alnus incana	Grove of Speckled Alder	Young	shown	Good	PROTECT	Provides habitat and food and soil stability
N	Primarily Alnus incana	Grove of Speckled Alder	Young	shown	Good	PROTECT	Provides habitat and food and soil stability

3 EXISTING TREE INVENTORY
 LO-1.0 NTS

THIS PLAN TO BE READ IN CONJUNCTION WITH TREE CONSERVATION REPORT DATED NOVEMBER 26, 2014 BY MUNCASTER ENVIRONMENTAL PLANNING INC.

