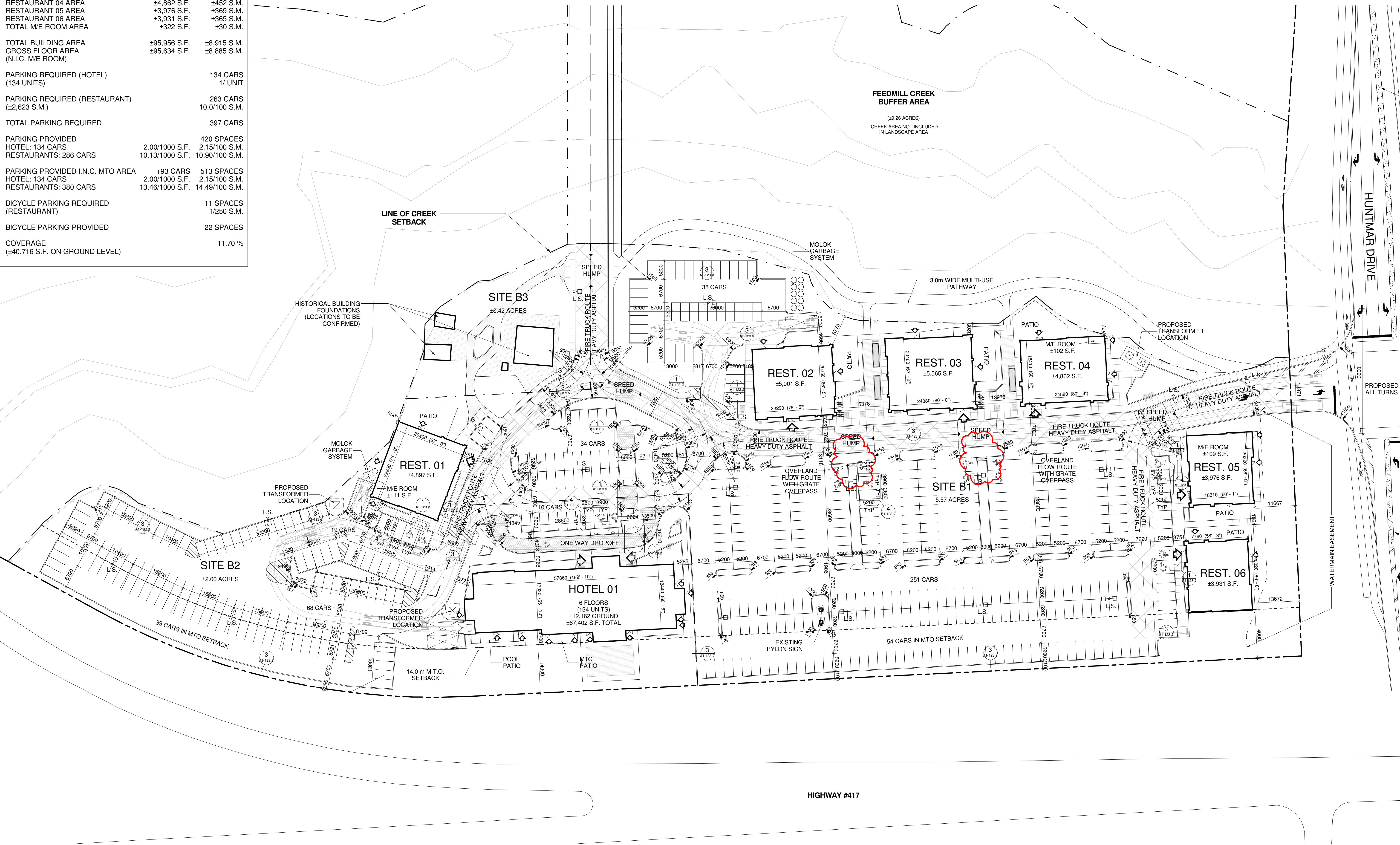


STATISTICS

TOTAL SITE B AREA	±7.99 ACRES	±3.23 H.A.
SITE B1 AREA	±5.59 ACRES	±2.26 H.A.
SITE B2 AREA	±1.98 ACRES	±0.80 H.A.
SITE B3 AREA	±0.42 ACRES	±0.17 H.A.
HOTEL 01 AREA	±67,402 S.F.	±6,236 S.M.
RESTAURANT 01 AREA	±4,897 S.F.	±455 S.M.
RESTAURANT 02 AREA	±5,001 S.F.	±465 S.M.
RESTAURANT 03 AREA	±5,565 S.F.	±517 S.M.
RESTAURANT 04 AREA	±4,862 S.F.	±452 S.M.
RESTAURANT 05 AREA	±3,976 S.F.	±369 S.M.
RESTAURANT 06 AREA	±3,931 S.F.	±365 S.M.
TOTAL M/E ROOM AREA	±322 S.F.	±30 S.M.
TOTAL BUILDING AREA	±95,956 S.F.	±8,915 S.M.
GROSS FLOOR AREA (N.I.C. M/E ROOM)	±95,634 S.F.	±8,885 S.M.
PARKING REQUIRED (HOTEL) (134 UNITS)	134 CARS	1/ UNIT
PARKING REQUIRED (RESTAURANT) (±2,623 S.M.)	263 CARS	10.0/100 S.M.
TOTAL PARKING REQUIRED	397 CARS	
PARKING PROVIDED	420 SPACES	
HOTEL: 134 CARS	2.00/1000 S.F.	2.15/100 S.M.
RESTAURANTS: 266 CARS	10.13/1000 S.F.	10.90/100 S.M.
PARKING PROVIDED I.N.C. MTO AREA	+93 CARS	513 SPACES
HOTEL: 134 CARS	2.00/1000 S.F.	2.15/100 S.M.
RESTAURANTS: 380 CARS	13.46/1000 S.F.	14.49/100 S.M.
BICYCLE PARKING REQUIRED (RESTAURANT)	11 SPACES	1/250 S.M.
BICYCLE PARKING PROVIDED	22 SPACES	
COVERAGE (±40,716 S.F. ON GROUND LEVEL)		11.70 %



This drawing, as an instrument of service, is provided by and is the property of Turner Fleischer Architects Inc. The contractor must verify and accept responsibility for all dimensions and conditions on site and must notify Turner Fleischer Architects Inc. of any variations from the information provided. This drawing is not to be used for any other purpose without the written consent of Turner Fleischer Architects Inc. The contractor must verify the accuracy of survey, structural, mechanical, electrical etc. information shown on this drawing. Refer to the appropriate consultant's drawings before proceeding with the work. Construction must conform to all applicable codes and requirements of authorities having jurisdiction. The contractor working from drawings not specifically marked for construction must assume full responsibility and bear cost for any correction or damage resulting from his work.

Issue	Rev.	Date	Issue / Revision	By
6		2014-12-10	ISSUED FOR COORDINATION	MK
7		2014-12-05	ISSUED FOR COORDINATION	MK
8		2014-11-25	ISSUED FOR COORDINATION	MK
5		2014-11-19	ISSUED FOR COORDINATION	MK
4		2014-11-13	ISSUED FOR COORDINATION	MK
3		2014-11-10	ISSUED FOR COORDINATION	MK
2		2014-11-04	ISSUED FOR COORDINATION	MK
1		2014-10-03	ISSUED FOR COORDINATION	MK

PROJECT ARCHITECT

TURNER FLEISCHER

TURNER FLEISCHER ARCHITECTS INC.
67 Leavelle Road, Toronto, ON Canada M9B 2T8
Telephone (416) 415-2222, Facsimile (416) 415-6777
turnerfleischer.com

LANDSCAPE CIVIL

IBI GROUP

Architects, Engineers, Planners 333 Preston Street
5th Floor, 230 Richmond Street West Tower 1, Suite 400
Toronto, ON Ottawa, Ontario
MSV 1V6, Canada Tel: (416) 396-1930
Fax: (416) 396-0444 Fax: (416) 396-0444

ELECTRICAL

h HAMMERSCHLAG + JOFFE INC.

69 Leavelle Road Toronto,
Ontario Canada M9B 2T8
T: (416) 444-9063
F: (416) 444-1863
E: enj@hampj.com

PLANNER

FOTENN PLANNING & DESIGN

223 McLeod Street | Ottawa, ON | K2P 0Z8
T: 613.730.5709 ext 234 | F: 613.730.1136

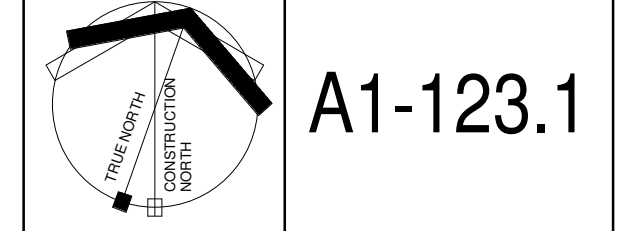
DEVELOPER

RIO CAN

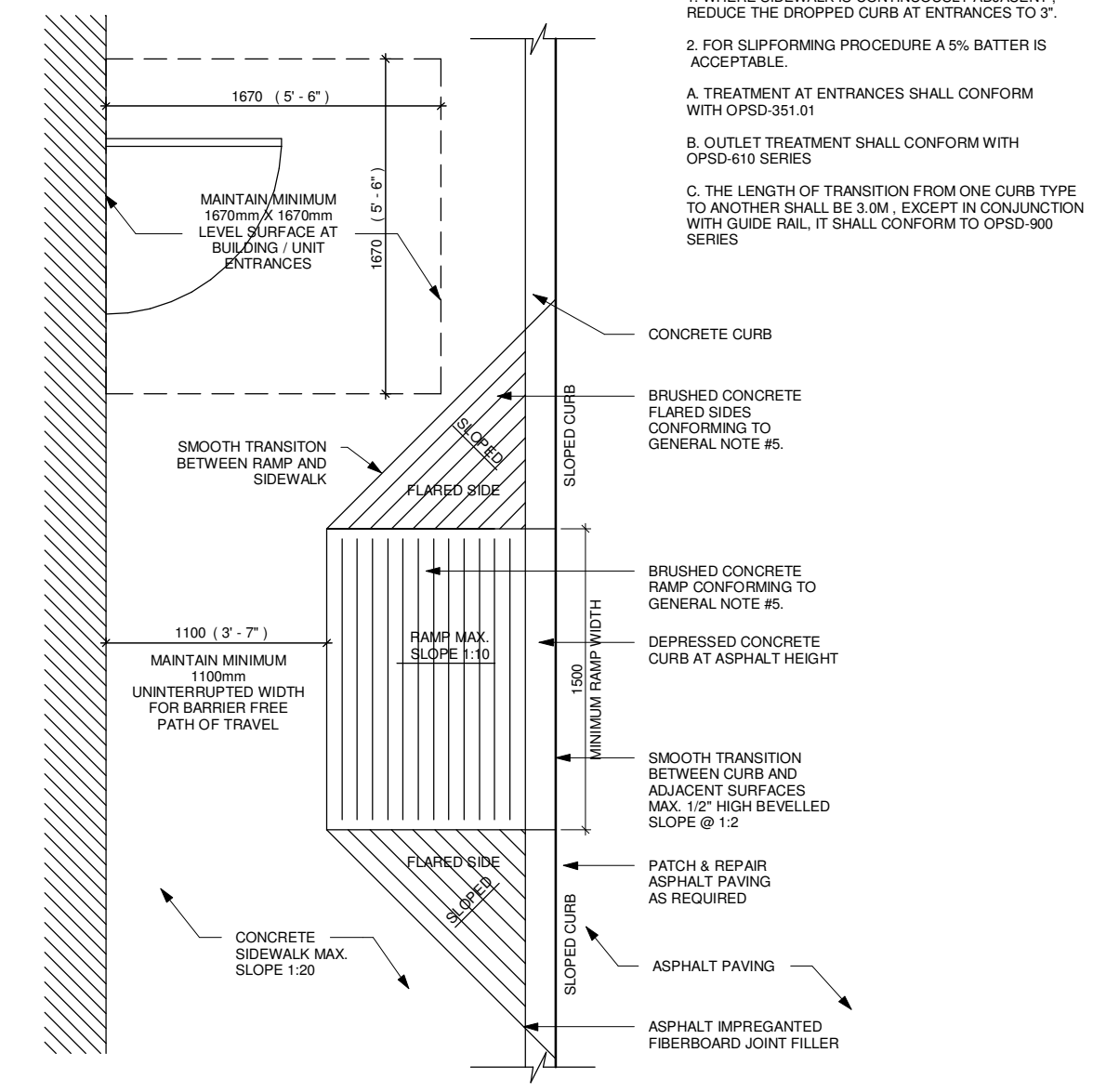
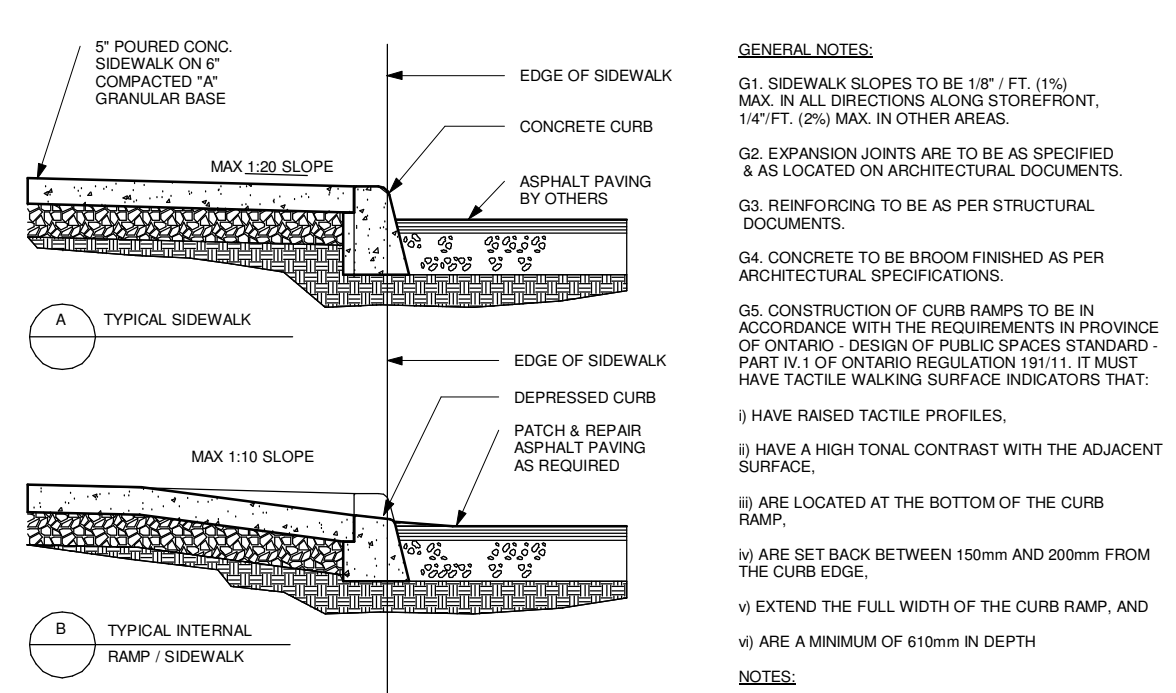
RioCan Real Estate Investment Trust
2300 Yonge Street
Suite 520
Toronto, Ontario
M4P 1E4
(416) 646 6330

Project: **TANGER OUTLETS KANATA**
KANATA, ONTARIO

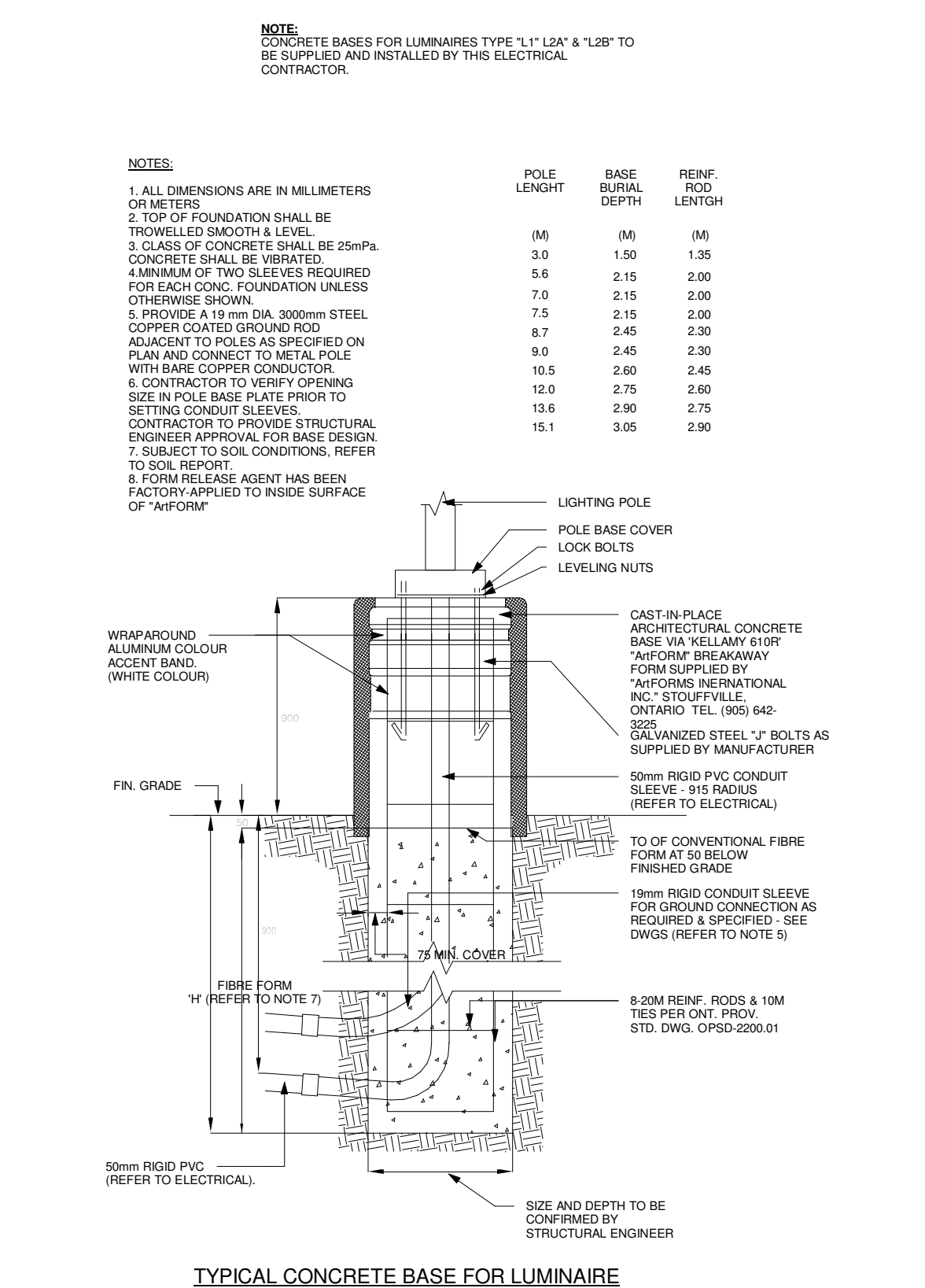
Drawing Name:	SITE PLAN		
Proj no.:	12.258	Date:	OCTOBER 3, 2013
Drawn by:	FS	Scale:	1 : 500
Checked by:	RD	Drawing No.:	A1-123.1



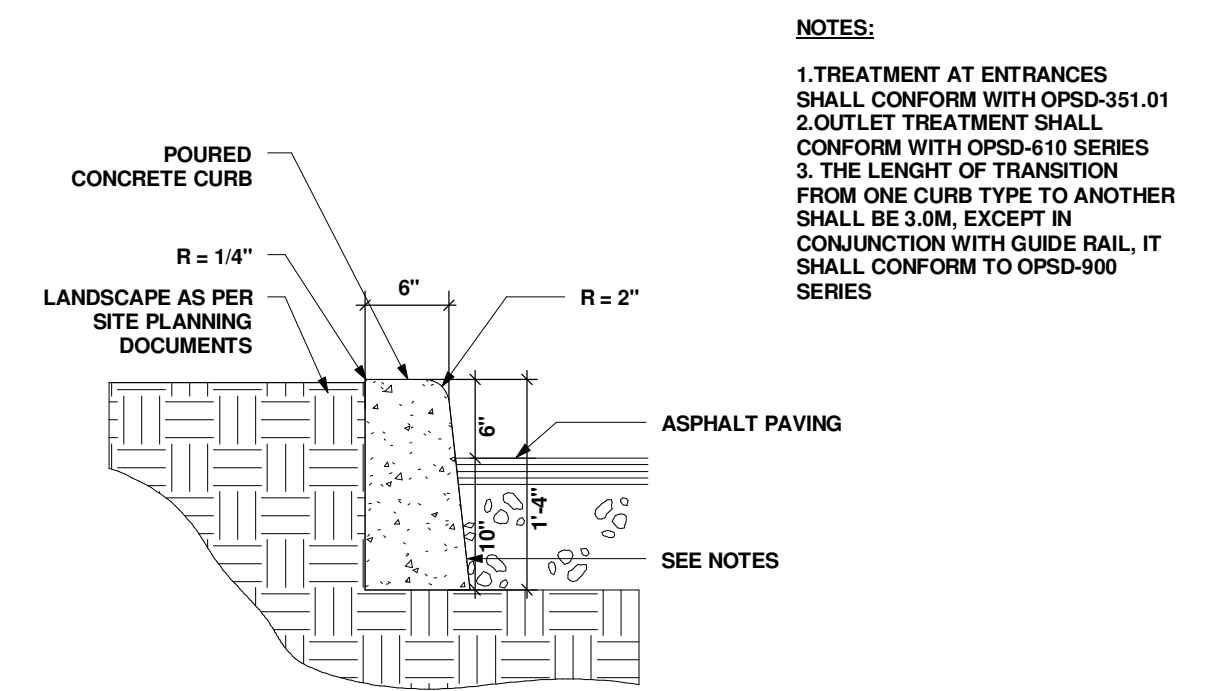
\\F:\P\CP\DATA\proj\12258-16_REV1\12258-A1-123 (SITE PLAN).dwg



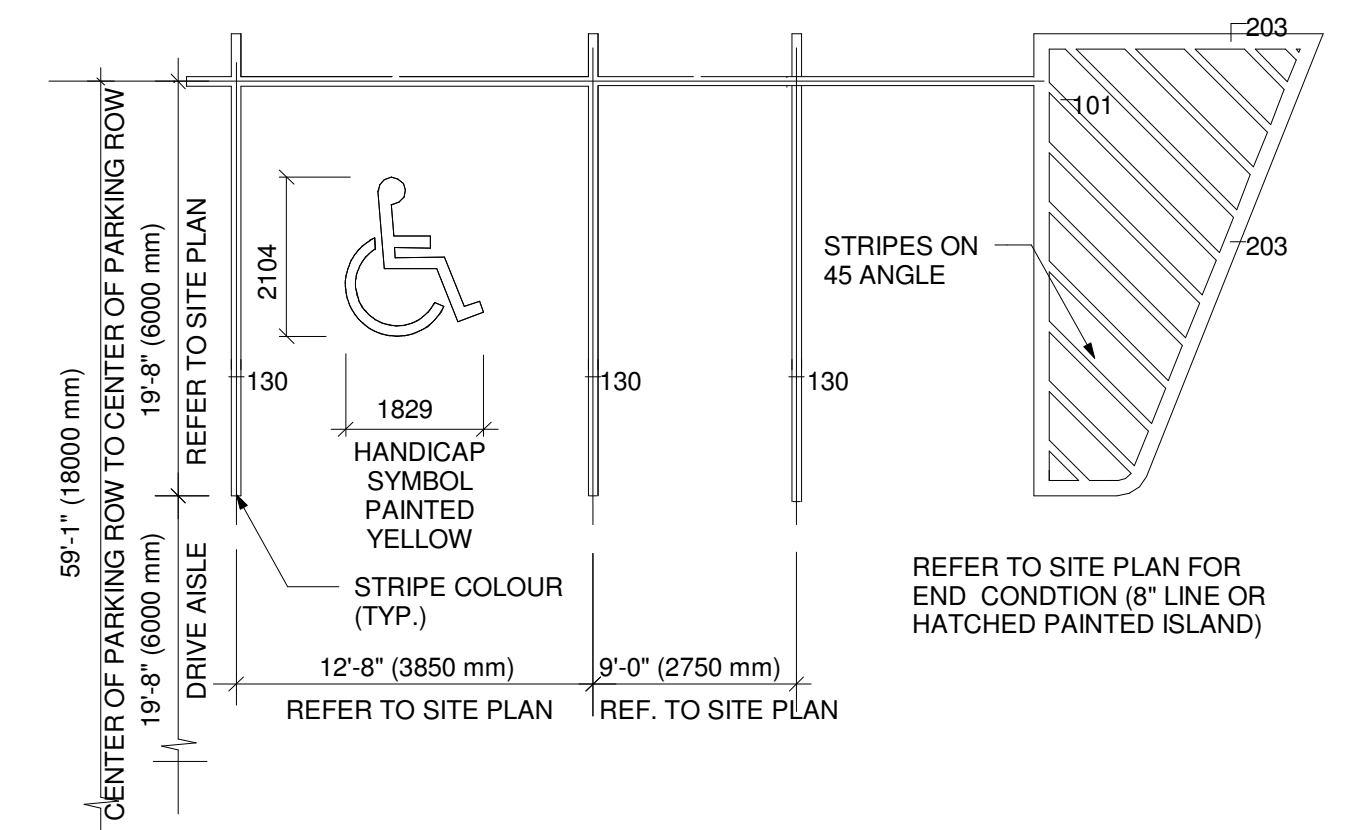
1 CURB RAMP
1 : 35



2 LIGHT STANDARD
1 : 500



3 CONCRETE CURB SECTION
1 : 175



4 PARKING DETAIL
1 : 100

This drawing, as an instrument of service, is provided by and is the property of Turner Fleischer Architects Inc. The contractor must verify and accept responsibility for all dimensions and conditions on site and must notify Turner Fleischer Architects Inc. of any variations from the approved information. This drawing is not to be scaled. The architect is not responsible for the accuracy of survey, structural, mechanical, electrical etc. information shown on this drawing. Refer to the appropriate consultant's drawings before proceeding with the work. Construction must conform to all applicable codes and requirements of authorities having jurisdiction. The contractor working from drawings not specifically marked for construction must assume full responsibility and incur cost for any correction or damage resulting from his work.

Issue / Rev.	Date	Issue / Revision	By
8	2014-12-10	ISSUED FOR COORDINATION	MK
7	2014-12-05	ISSUED FOR COORDINATION	MK
6	2014-11-25	ISSUED FOR COORDINATION	MK
5	2014-11-19	ISSUED FOR COORDINATION	MK
4	2014-11-13	ISSUED FOR COORDINATION	MK
3	2014-11-10	ISSUED FOR COORDINATION	MK
2	2014-11-04	ISSUED FOR COORDINATION	MK
1	2014-10-03	ISSUED FOR COORDINATION	MK

PROJECT ARCHITECT
TURNER FLEISCHER
TURNER FLEISCHER ARCHITECTS INC.
67 Leslie Road, Toronto, ON Canada M8B 2T8
Telephone (416) 415-2111, Faxline (416) 415-9777
turnerfleischer.com

LANDSCAPE CIVIL
IBI GROUP
Architects, Engineers, Planners 333 Preston Street
5th Floor, 230 Richmond Street West Tower 1, Suite 400
Toronto, ON Ottawa, Ontario
MSV 1 V6, Canada Canada K1S 5H4
Tel: (416) 596-1930 Tel: (613) 225-1311
Fax: (416) 596-0464 Fax: (613) 225-9868

ELECTRICAL
h HAMMERSCHLAG + JOFFE INC.
69 Leslie Road Toronto,
Ontario Canada M8B 2T8
T: (416) 444-9263
F: (416) 444-1463
E: oaj@hanyj.com

PLANNER
FOTENN PLANNING & URBAN DESIGN
223 McLeod Street | Ottawa, ON | K2P 0Z8
T: 613.730.5709 ext.234 | F: 613.730.1136

DEVELOPER
RIOCAN
RioCan Real Estate Investment Trust
2300 Yonge Street
Suite 500
Toronto, Ontario
M4P 1E4
(416) 646 6330

Project:
TANGER OUTLETS KANATA
KANATA, ONTARIO

Drawing Name: **SITE PLAN DETAILS**

Proj no.: 12.258 Date: OCTOBER 3, 2013
Drawn by: FS Scale: As indicated
Checked by: RD

Drawing No: **A1-123.2**

\\F:\AL\PS\DATA\proj\12258\12.258-12_REV1\12258-A1-123 (SITE PLAN).DWG

DIVISION LINE BETWEEN LOTS 3 AND

CAMPEAU DRIVE (EXISTING)

SITE A
EXISTING SITE
(±36.88 ACRES)

POND AREA
(±2.56 ACRES)
POND AREA NOT INCLUDED IN
LANDSCAPE AREA

OUTPARCEL AREA
(±1.16 ACRES)

LINE OF CREEK
SETBACK

FEEDMILL CREEK
BUFFER AREA
(±9.26 ACRES)
CREEK AREA NOT INCLUDED
IN LANDSCAPE AREA

SITE B
SUBJECT SITE
(±7.99 ACRES)

HIGHWAY #417

(DESIGNATED AS KING'S HIGHWAY BY ORDER IN 3021-71)
(DESIGNATED AS CONTROLLED ACCESS HIGHWAY AS SCHEDULE 2 TO REGULATION 389, R.R.O. 1970.)
HIGHWAY #417

This drawing, as an instrument of service, is provided by and is the property of Turner Fleischer Architects Inc. The contractor must verify and accept responsibility for all dimensions and conditions on site and must notify Turner Fleischer Architects Inc. of any variations from the approved information. This drawing is not to be scaled. The architect is not responsible for the accuracy of survey, structural, mechanical, electrical, etc. information shown on this drawing. Refer to the appropriate consultant's drawings before proceeding with the work. Construction must conform to all applicable codes and requirements of authorities having jurisdiction. The contractor working from drawings not specifically marked for construction must assume full responsibility and incur costs for any corrections or damage resulting from his work.

8	2014-12-10	ISSUED FOR COORDINATION	MK
7	2014-12-05	ISSUED FOR COORDINATION	MK
6	2014-11-25	ISSUED FOR COORDINATION	MK
5	2014-11-19	ISSUED FOR COORDINATION	MK
Issue / Rev:	Date:	Issue / Revision:	By:

PROJECT ARCHITECT

TURNER FLEISCHER
 TURNER FLEISCHER ARCHITECTS INC.
 67 Leslie Road, Toronto, ON Canada M9B 2T8
 Telephone: (416) 495-2323, Fax: (416) 495-9777
 turnerfleischer.com

LANDSCAPE CIVIL

IBI GROUP
 Architects, Engineers, Planners 333 Preston Street
 5th Floor, 230 Richmond Street West Tower 1, Suite 400
 Toronto, ON Ottawa, Ontario
 MSV 1V6, Canada Tel: (416) 596-1930 Tel: (613) 225-1311
 Fax: (416) 596-0644 Fax: (613) 225-9868

ELECTRICAL

HAMMERSCHLAG & JOFFE INC.
 69 Leslie Road Toronto,
 Ontario Canada M9B 2T8
 T: (416) 444-9263
 F: (416) 444-1463
 E: enj@hampj.com

PLANNER
FOTENN PLANNING & URBAN DESIGN
 223 McLeod Street | Ottawa, ON | K2P 0Z8
 T: 613.730.5709 ext 234 | F: 613.730.1136

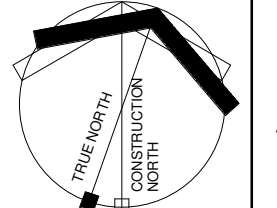
DEVELOPER

RIOCAN
 RioCan Real Estate Investment Trust
 2300 Yonge Street
 Suite 500
 Toronto, Ontario
 M4P 1E4
 (416) 646 6330

Project:
TANGER OUTLETS KANATA
 KANATA, ONTARIO

Drawing Name:
OVERALL SITE PLAN

Proj no.: 12.258 Date: OCTOBER 3, 2013
 Drawn by: MK Scale: 1:1000
 Checked by: RD

Drawing No:

A1-123.3

\\FAC\PSYDATA\proj\12258\12258-16_REV\12258-A1-123 (SITE B).rvt