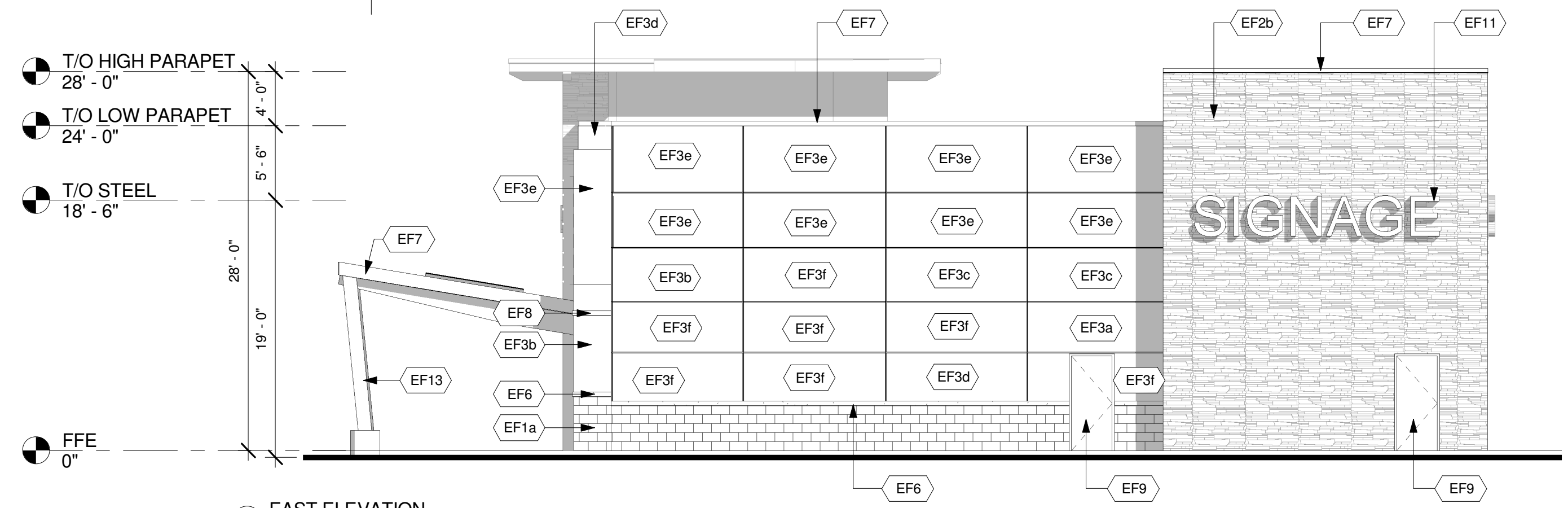
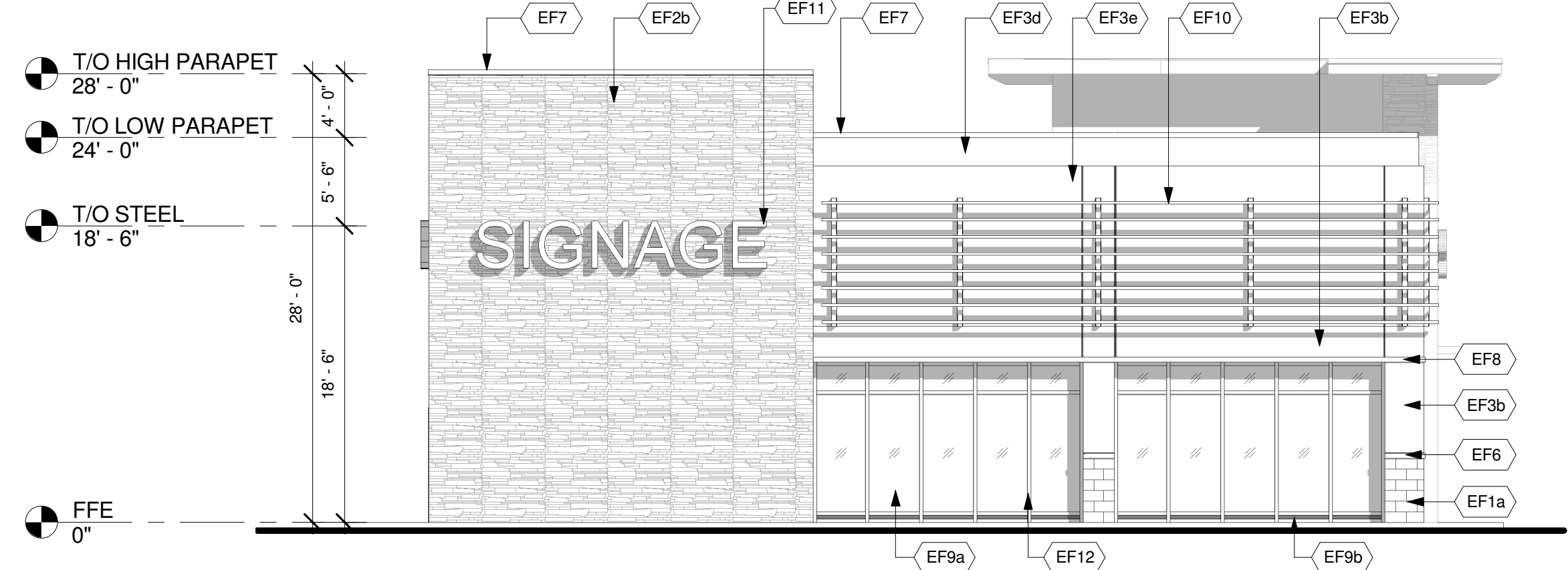


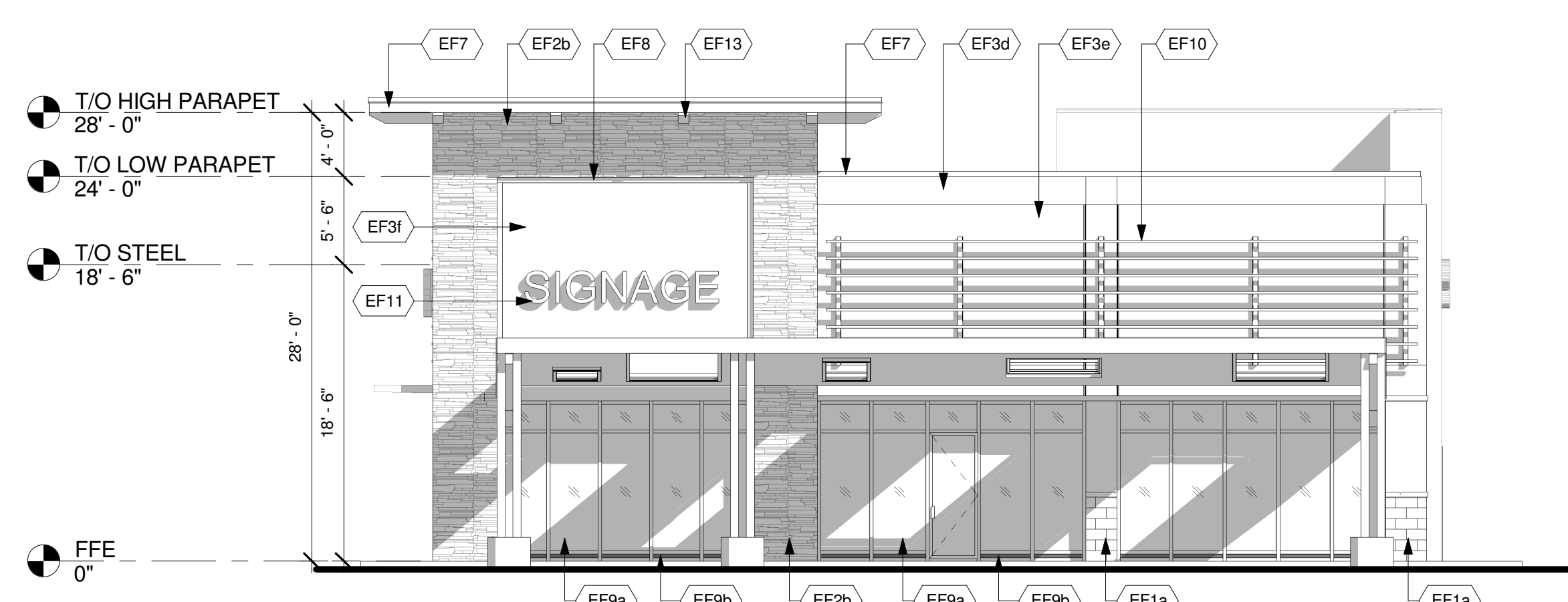
1 WEST ELEVATION
1/8" = 1'-0"



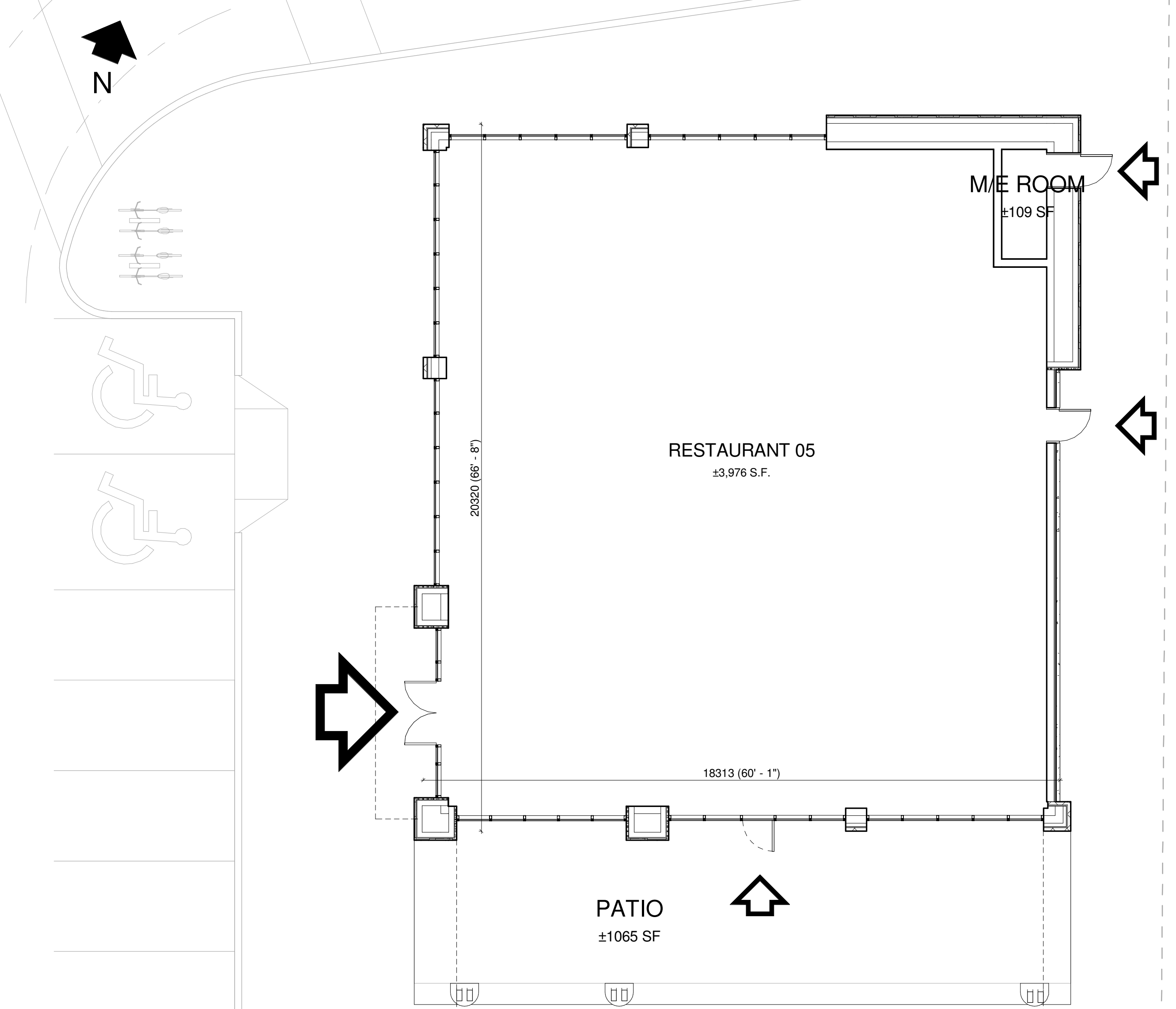
2 EAST ELEVATION
1/8" = 1'-0"



3 NORTH ELEVATION
1/8" = 1'-0"



4 SOUTH ELEVATION
1/8" = 1'-0"



6 FLOOR PLAN
1/8" = 1'-0"

EXTERIOR FINISH SCHEDULE

| | | | | | |
|------|---|------|--|------|--|
| EF1a | ARCHITECTURAL BLOCK Architectural Concrete Block 4"x16"x24" Manufacturer: Shouldice Architectural Block Tie Series Finish: Tan Stone Colour: Colby | EF4a | FIBER CEMENT SIDING HORIZONTAL FIBER CEMENT SIDING Manufacturer: Certainfeed or approved equal Weatherboard cedar lap siding 8" wide Colour: Slate 525 | EF10 | METAL SLATS 2" x 2" x 1/8" HSS GALVANIZED LUBES HORIZONTAL AND HHS 6 x 3 VERTICAL SUPPORTS, DESIGNED TO CARRY SIGNAGE AND STAMPED BY PENG |
| EF1b | ARCHITECTURAL BLOCK Architectural Concrete Block 4"x16"x24" Manufacturer: Shouldice Architectural Block Tie Series Finish: Tan Stone Colour: Executive Grey | EF4b | FIBER CEMENT SIDING HORIZONTAL FIBER CEMENT SIDING Manufacturer: Certainfeed or approved equal Weatherboard cedar lap siding 8" wide Colour: Cedar 523 | EF11 | SIGNAGE (BY TENANT) At EIFS construction add 16 Ga sheet metal sheet between sheathing and stud at SIGNAGE locations. |
| EF2a | CULTURED STONE Cultured Stone Manufacturer: Canadian Stone Industries Del Mare Ledgestone Series Colour: Barossa | EF5 | COMPOSITE ALUMINUM PANEL Manufacturer: Mitsubishi Plastics Composite Plastics Inc. or approved equal ALPOLIC "Bone White" AGT-30 Dry Joint System | EF12 | H.M. DOORS & FRAMES Prefinished hollow metal doors and frames Painted to match adjacent material |
| EF2b | CULTURED STONE Cultured Stone Manufacturer: Canadian Stone Industries Pro-Fit Ledgestone Series Colour: Chardonway | EF6 | PRECAST CONCRETE SILL Architectural concrete 3 1/2" x 5 9/16" W x 24" L Manufacturer: Shouldice Super sill 424 Finish: Tapestry Colour: To match EF1- BL1,2&3 | EF13 | WOOD FINISH |
| EF3a | EIFS (EXTERIOR INSULATED FINISH SYSTEM) ACRYLIC STUCCO FINISH Finish: Sanpebble BM 1883 SEMINOLE BROWN | EF7 | PREFINISHED METAL FLASHING/FASCIA 24 GA. PREFINISHED METAL FLASHING/FASCIA *Refer to schedules for colour and material specifications | | |
| EF3b | EIFS (EXTERIOR INSULATED FINISH SYSTEM) ACRYLIC STUCCO FINISH Finish: Sanpebble BM 2007-10 SMOLDERING RED | EF8 | DECORATIVE MouldING EXPANDED POLYSTYRENE MouldING TO MATCH PROFILES INDICATED ON DRAWINGS | | |
| EF3c | EIFS (EXTERIOR INSULATED FINISH SYSTEM) ACRYLIC STUCCO FINISH Finish: Sanpebble BM 1116- SEPIA TAN | EF9a | GLAZED DOORS & WINDOWS Clear anodized aluminum frames. Clear insulated vision glass/low-E glazing (tempered glass to be used at doors and sidelights/sidelites) | | |
| EF3d | EIFS (EXTERIOR INSULATED FINISH SYSTEM) ACRYLIC STUCCO FINISH Finish: Sanpebble BMHC-155 NEWBURYPORT BLUE | EF9b | SPANDREL ALUMINUM PANEL 2" Insulated clear anodized aluminum panel finished at both sides | | |
| EF3e | EIFS (EXTERIOR INSULATED FINISH SYSTEM) ACRYLIC STUCCO FINISH Finish: Sanpebble BM-2128 OXFORD GRAY | | | | |
| EF3f | EIFS (EXTERIOR INSULATED FINISH SYSTEM) ACRYLIC STUCCO FINISH Finish: Sanpebble BM OC-85 - MAYONNAISE | | | | |
| EF3g | EIFS (EXTERIOR INSULATED FINISH SYSTEM) ACRYLIC STUCCO FINISH Finish: Sanpebble BM 2112-30 STONE BROWN | | | | |

This drawing, as an instrument of service, is provided by and is the property of Turner Fleischer Architects Inc. The contractor must verify and accept responsibility for all dimensions and conditions on site and must notify Turner Fleischer Architects Inc. of any variations from the specified information. This drawing is not to be scaled. The architect is not responsible for the accuracy of survey, structural, mechanical, electrical, etc., information shown on this drawing. Refer to the appropriate consultant's drawings before proceeding with the work. Contractor must conform to all applicable codes and requirements of authorities having jurisdiction. The contractor working from drawings not specifically marked for Contractor must assume full responsibility and bear costs for any corrections or damage resulting from his work.

| | | | |
|--------------|------------|-------------------------|-----|
| 3 | 2014-11-21 | ISSUED FOR COORDINATION | IMK |
| 2 | 2014-11-17 | ISSUED FOR COORDINATION | LJ |
| 1 | 2014-11-13 | ISSUED FOR COORDINATION | LJ |
| Issue / Rev: | Date: | Issue / Revision: | By: |

PROJECT ARCHITECT
TURNER FLEISCHER
TURNER FLEISCHER ARCHITECTS INC.
67 Leslie Road, Toronto, Ontario Canada M8B 2Y8
Telephone (416) 493-2333, Toronto (416) 493-6777
turnerfleischer.com

LANDSCAPE CIVIL
IBI GROUP
Architects, Engineers, Planners 333 Preston Street
5th Floor, 230 Richmond Street West Tower 1, Suite 400
Toronto, ON Ontario, Canada
MSV 1V6, Canada
Tel: (416) 596-1930
Fax: (416) 596-0644

ELECTRICAL
h HAMMERSCHLAG + JOFFE INC.
69 Leslie Road Toronto,
Ontario Canada M8B 2Y8
T: (416) 444-9283
F: (416) 444-1883
E: enj@hamj.com

PLANNER
FOTENN PLANNING & URBAN DESIGN
223 McLeod Street | Ottawa, ON | K2P 0Z8
T: 613.730.5709 ext.234 | F: 613.730.1136

DEVELOPER
RIOCAN
RioCan Real Estate Investment Trust
2300 Yonge Street
Suite 520
Toronto, Ontario
M4P 1E4
(416) 646 6330

Project:
TANGER OUTLETS KANATA
KANATA, ONTARIO

Drawing Name:
RESTAURANT 5 ELEVATIONS AND FLOOR PLAN

Proj no.: 12.258 Date: NOVEMBER 17, 2014
Drawn by: JJ Scale: As Indicated
Checked by: RD

Drawing No.:
A2-1.6.1



PRELIMINARY

\\TFA-CPS\DATA\proj\12258\12258-15-REV\TELEVATIONS\A2-1 (SITE B)\12258-A2-1.6 (RESTAURANT 05).rvt



TANGER OUTLETS KANATA

KANATA, ONTARIO

PERSPECTIVE

TURNER FLEISCHER

www.turnerfleischer.com



NOVEMBER 17, 2014
12.258 A2-1.6.2