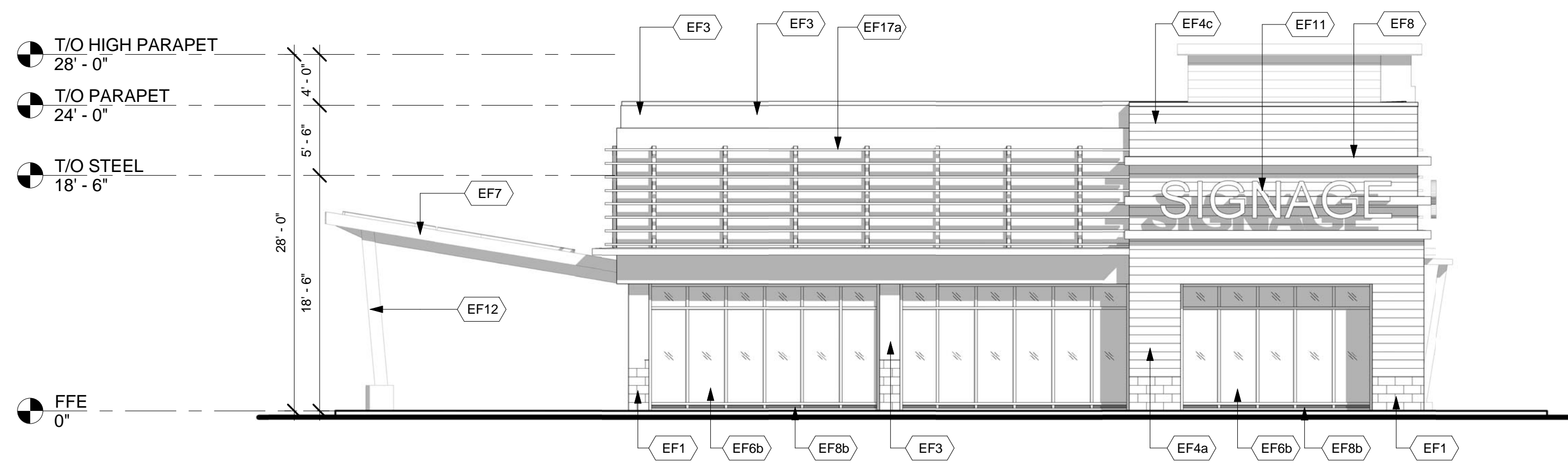
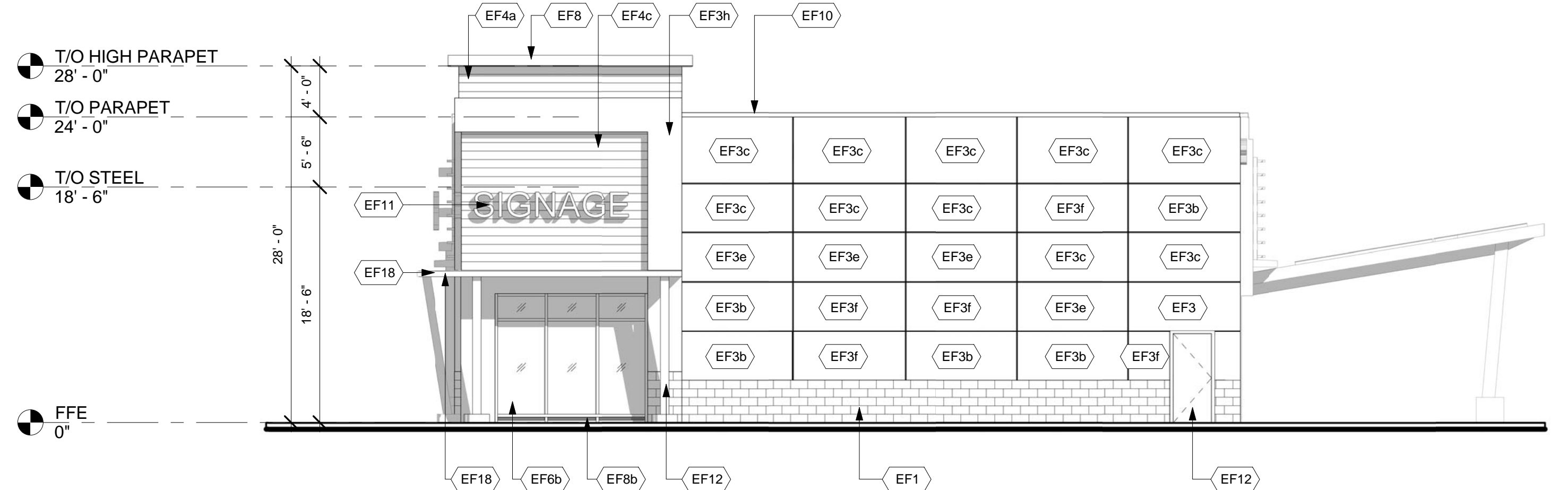


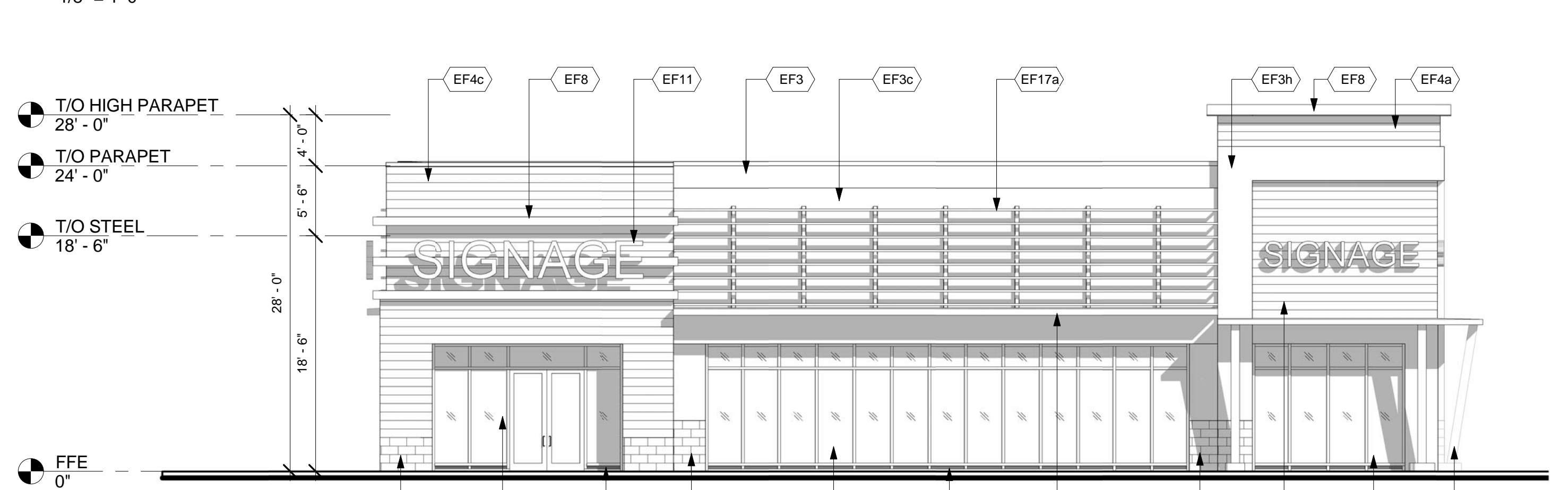
This drawing, as an instrument of service, is provided by and is the property of Turner Fleischer Architects Inc. The contractor must verify and accept responsibility for all dimensions and conditions on site and must notify Turner Fleischer Architects Inc. of any variations from the supplied information. This drawing is not to be scaled. The architect is not responsible for the accuracy of survey, structural, mechanical, electrical, etc. information shown on this drawing. Refer to the appropriate consultant's drawings before proceeding with the work. Construction must conform to all applicable codes and requirements of authority having jurisdiction. The contractor working from drawings not specifically marked for construction must assume full responsibility and bear costs for any corrections or damage resulting from his work.



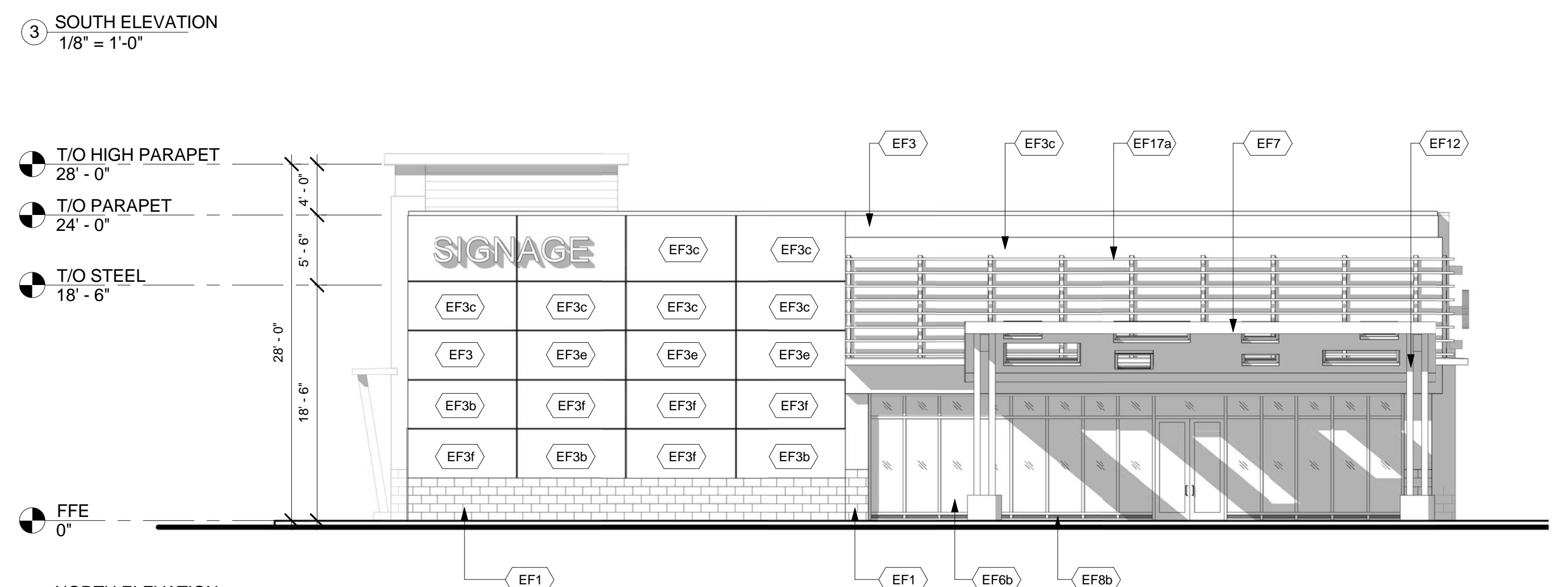
1 EAST ELEVATION
1/8" = 1'-0"



2 WEST ELEVATION
1/8" = 1'-0"



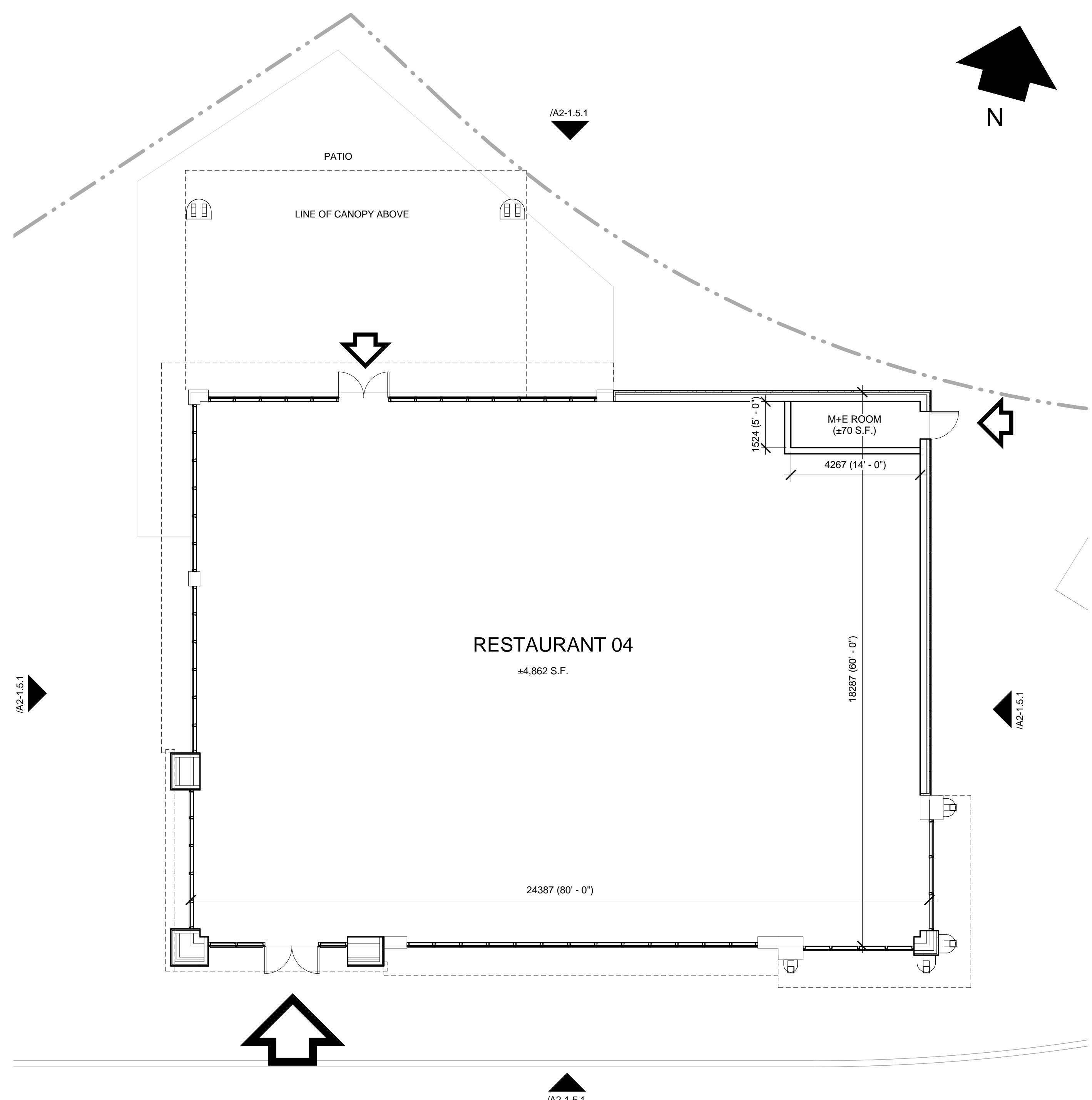
3 SOUTH ELEVATION
1/8" = 1'-0"



4 NORTH ELEVATION
1/8" = 1'-0"

EXTERIOR FINISH SCHEDULE

EF1a	ARCHITECTURAL BLOCK Architectural Concrete Block 4"x16"x24" Manufacturer: Shouidice Architectural Block Tie Series Finish: Tex-Stone Colour: Cobly	EF3c	EIFS (EXTERIOR INSULATED FINISH SYSTEM) ACRYLIC STUCCO FINISH Finish: Sanpebble BM 1116 - SEPIA TAN	EF4b	FIBER CEMENT SIDING HORIZONTAL FIBER CEMENT SIDING Manufacturer: Certainfead or approved equal Weatherboard cedar lap siding 8" wide Colour: Cedar 523	EF9a	GLAZED DOORS & WINDOWS Clear anodized aluminum frames. Clear insulated vision glass/low-E glazing (tempered glass to be used at doors and sidelights/sidelites)
EF1b	ARCHITECTURAL BLOCK Architectural Concrete Block 4"x16"x24" Manufacturer: Shouidice Architectural Block Tie Series Finish: Tex-Stone Colour: Executive Grey	EF3d	EIFS (EXTERIOR INSULATED FINISH SYSTEM) ACRYLIC STUCCO FINISH Finish: Sanpebble BMHC-155 NEWBURYPORT BLUE	EF5	COMPOSITE ALUMINUM PANEL Manufacturer: Mitsubishi Plastics Composite Plastics Inc. or approved equal ALPOLIC "Bone White" AGT-30 Dry Joint System	EF9b	SPANDREL ALUMINUM PANEL 2" Insulated clear anodized aluminum panel finished at both sides
EF2	CULTURED STONE Cultured Stone Manufacturer: Canadian Stone Industries Del Mare Ledgesstone Series Colour: Barossa	EF3e	EIFS (EXTERIOR INSULATED FINISH SYSTEM) ACRYLIC STUCCO FINISH Finish: Sanpebble BM-2128 OXFORD GRAY	EF6	PRECAST CONCRETE SILL Architectural concrete 3 1/2H x 5 9/16" W x 24" L Manufacturer: Shouidice Super sill 424 Finish: Tapestry Colour: To match EF1- BL1,2&3	EF10	METAL SLATS 2" x 2" x 1/8" HSS GALVANIZED LUBES HORIZONTAL AND HHS 6 x 3 VERTICAL SUPPORTS, DESIGNED TO CARRY SIGNAGE AND STAMPED BY PENG
EF3a	EIFS (EXTERIOR INSULATED FINISH SYSTEM) ACRYLIC STUCCO FINISH Finish: Sanpebble BM 1883 SEMINOLE BROWN	EF3f	EIFS (EXTERIOR INSULATED FINISH SYSTEM) ACRYLIC STUCCO FINISH Finish: Sanpebble BM OC-85 - MAYONNAISE	EF7	PREFINISHED METAL FLASHING/FASCIA 24 GA. PREFINISHED METAL FLASHING/FASCIA *Refer to schedules for colour and material specifications	EF11	SIGNAGE (BY TENANT) At EIFS construction add 16 Ga sheet metal stud between sheathing and stud at SIGNAGE locations.
EF3b	EIFS (EXTERIOR INSULATED FINISH SYSTEM) ACRYLIC STUCCO FINISH Finish: Sanpebble BM 2007-10 SMOLDERING RED	EF3g	EIFS (EXTERIOR INSULATED FINISH SYSTEM) ACRYLIC STUCCO FINISH Finish: Sanpebble BM 2112-30 STONE BROWN	EF8	DECORATIVE MOULDING EXPANDED POLYSTYRENE MOULDING TO MATCH PROFILES INDICATED ON DRAWINGS ACRYLIC STUCCO FINISH Finish: Sanpebble BM 2124-10-WROUGHT IRON	EF12	H.M. DOORS & FRAMES Prefinished hollow metal doors and frames Painted to match adjacent material
		EF3h	EIFS (EXTERIOR INSULATED FINISH SYSTEM) ACRYLIC STUCCO FINISH Finish: Sanpebble BM 178 GOLDEN LAB	EF4a	FIBER CEMENT SIDING HORIZONTAL FIBER CEMENT SIDING Manufacturer: Certainfead or approved equal Weatherboard cedar lap siding 8" wide Colour: Slate 525	EF13	WOOD FINISH



5 FFE
1/8" = 1'-0"

1	2014/11/17	ISSUED FOR COORDINATION	NA
Issue/Rev:	Date:	Issue / Revision:	By:
PROJECT ARCHITECT			
TURNER FLEISCHER			
<small>TURNER FLEISCHER ARCHITECTS INC. 67 Lansmill Road, Toronto, ON Canada M9A 2H8 Telephone (416) 451-2232, Fax (416) 451-9777 turnerfleischer.com</small>			
LANDSCAPE CIVIL		IBI GROUP	
<small>Architects, Engineers, Planners 5th Floor, 230 Richmond Street West Toronto, ON M5V 1V6, Canada Tel: (416) 596-1930 Fax: (416) 596-0644</small>		<small>333 Preston Street Tower 1, Suite 400 Ottawa, Ontario Canada K1S 5H4 Tel: (613) 225-1311 FAX: (613) 225-9868</small>	
ELECTRICAL			
h HAMMERSCHLAG + JOFFE INC.			
<small>49 Leavelle Road Toronto, Ontario Canada M8B 2T8 T: (416) 444-9283 F: (416) 444-1863 E: design@hngi.com</small>			
PLANNER			
FOTENN PLANNING & URBAN DESIGN			
<small>223 McLeod Street Ottawa, ON K2P 0Z8 T: 413.730.5709 ext.234 F: 413.730.1136</small>			
DEVELOPER			
RIOCAN			
<small>RioCan Real Estate Investment Trust 2300 Yonge Street Suite 520 Toronto, Ontario M4P 1E4 (416) 646 6330</small>			
Project: TANGER OUTLET KANATA KANATA, ONTARIO			
Drawing Name:		Drawing No:	
RESTAURANT 4 ELEVATIONS AND FLOOR PLANS		A2-1.5.1	
Proj no.:	12.258	Date:	NOVEMBER 2014
Drawn by:	NA	Scale:	As indicated
Checked by:	RD		

F:\3\09\12258-15-REVIT\ELEVATIONS\A2-1 (BIE B)\12258-A2-1-5 (RESTAURANT) 04.rvt



F:\proj\12258\12258-15_REV\TELEVATIONS\A2-1 (SITE B)\12258-A2-1.4 (RESTAURANT 04).rvt PRELIMINARY

TURNER FLEISCHER
www.turnerfleischer.com



TANGER OUTLET KANATA
KANATA, ONTARIO
RESTAURANT 04 PERSPECTIVE VIEW

NOVEMBER 17, 2014
12.258 A2-1.5.2