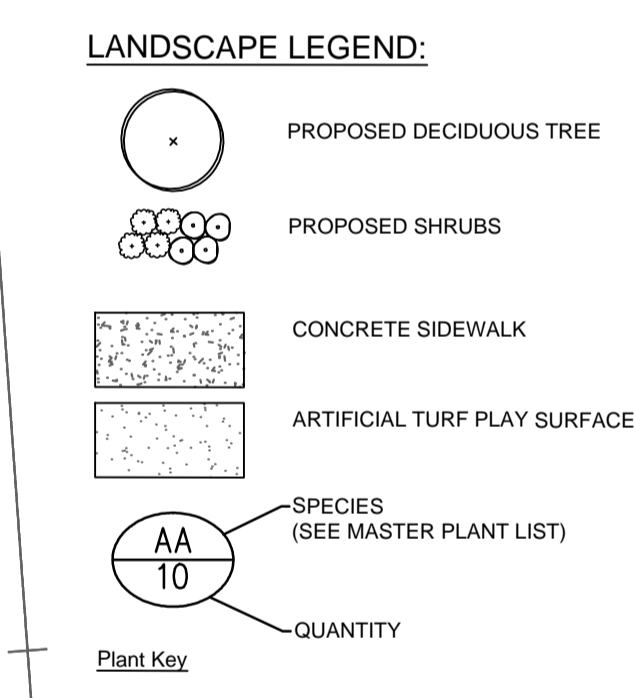
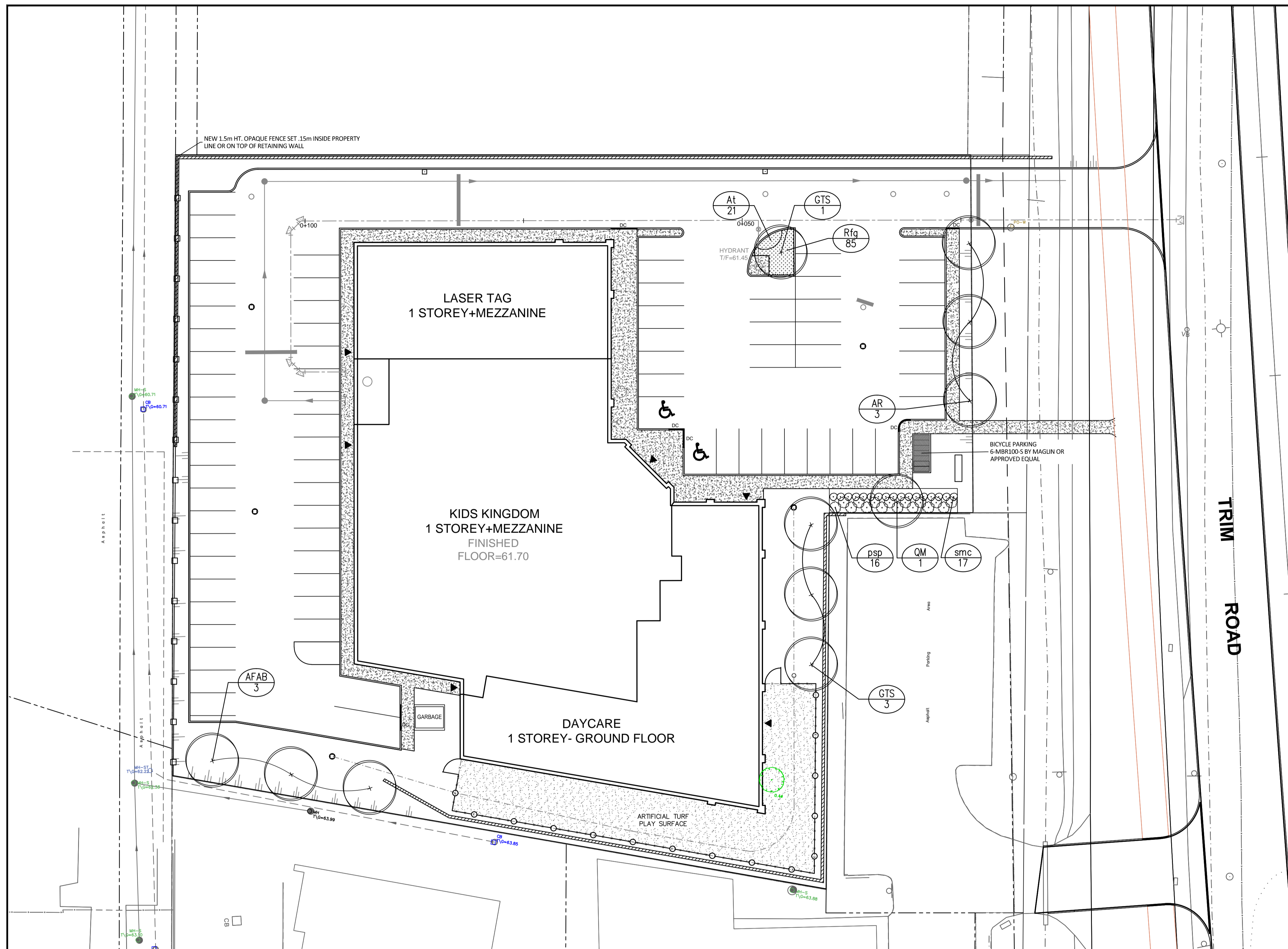


- ### PLANTING NOTES
- This drawing shall be read in conjunction with all relevant Architectural, Engineering, and related drawings and documents.
  - Refer to Engineering Drawings for Grading. Provide drainage as indicated in grading plan. Round smoothly all tops and toes of slopes. Compact all areas to 95% Standard Proctor Density unless otherwise noted.
  - Refer to Architectural Drawings for site layout.
  - Refer to Engineering Drawings for site servicing.
  - Contractor must contact utility companies for stake outs prior to excavation or planting.
  - Plant material shall be No. 1 Grade and shall comply with Canadian Standards for Nursery Stock (latest edition) published by the Canadian Nursery Landscape Association. All trees and shrubs shall be container grown, potted, S/B or B/B. Bare root planting will only be acceptable for certain species and as approved by the Landscape Architect. Plant material substitutions shall not be permitted without the written approval from the consultant.
  - Plant locations are schematic / approximate only. Contractor shall stake out locations on site for approval by the landscape architect prior to installation. The illustrated number of plants shown in the Planting Plan supersedes the estimated number in the Master Plant List. Contractor to report any discrepancies to the Landscape Architect prior to installation. Contractor will assume full responsibility if the Landscape Architect is not notified.
  - Shrubs shall be planted in a continuous prepared bed of 600mm depth approved planting soil mix covered with 75mm depth composted pine mulch to finish grade.
  - Perennials, Ornamental Grasses, Vines and Groundcovers shall be planted in a continuous prepared bed of 600mm depth approved planting soil mix covered over with 75mm depth composted pine mulch to finish grade unless otherwise noted. DO NOT PLACE WEED CONTROL FABRIC IN PERENNIAL, ORNAMENTAL GRASS, VINE, OR GROUND COVER beds.
  - Sod areas to receive 125mm depth topsoil mix as specified and shall be No. 1 Kentucky Bluegrass Sod grown from minimum mixture of 3 Kentucky Bluegrass cultivars. Quality and source shall comply with Canadian Standards for Nursery Stock, Section 17, (latest edition) published by the Canadian Nursery Landscape Nursery Landscape Association. Unless otherwise specified, turf is to be maintained by the contractor until a second cutting is accepted by the Landscape Architect.
  - Apply the following mineral fertilizer unless soil tests show other requirements: Sodded areas - (11-8-4) 11% Nitrogen, 8% Phosphorus, 4% Potash at a rate of 450kg/ha. - Planting Beds - (7-7-7) - 7% Nitrogen, 7% Phosphorus, 7% Potash at a rate of 1kg/m<sup>2</sup> of topsoil.
  - Reinstate all areas damaged or disturbed beyond the Limit of Work.
  - The contractor shall maintain the plant material according to accepted horticultural practice and shall warrant that as itemized on the plant list will remain free of defects for a minimum period of one (1) full year from completion acceptance and commencement of the warranty period. Throughout the warranty period, the Contractor, at his own expense, shall replace plant material of the same size and species as specified, if found dead, unhealthy, in an unsatisfactory growing condition or does not meet the requirements of the specifications as determined by the Landscape Architect. The Landscape Architect reserves the right to extend the Contractor's warranty for an additional one (1) year if, at the end of the warranty period, leaf development and growth is not sufficient to ensure future survival.
  - Existing trees to be retained shall be protected according to the detail on this plan.
  - Topsoil shall be high quality, Grade A, containing a maximum of 70% sandy loam and 10-15% organic matter and comply with the Canadian System of Soil Classification. pH value should be 5.5 to 7.5, and it should not contain toxic or growth prohibiting elements. Soil shall be free of stones greater than 25mm dia., and coarse vegetative material shall not exceed more than 2% of the volume. Topsoil will be stockpiled and inspected on site by the Landscape Architect prior to installation. The Landscape Architect may require testing by a certified company that can recommend measures to improve soil quality.



- ### LIST OF DETAILS:
- (found sheet L2)
- D1. Standard Deciduous Tree Planting Detail on Slope
  - D2. Standard Coniferous Tree Detail
  - D3. Deciduous and Coniferous Shrub Planting Detail
  - D4. Opaque Fence - Wall Mount Detail
  - D5. Opaque Fence Detail
  - D6. Navascape Grande Retaining Wall 1.4m Ht.
  - D7. Navascape Grande Retaining Wall 2.4m Ht.
  - D8. Bicycle Rack Detail
  - D9. Garbage Enclosure Detail



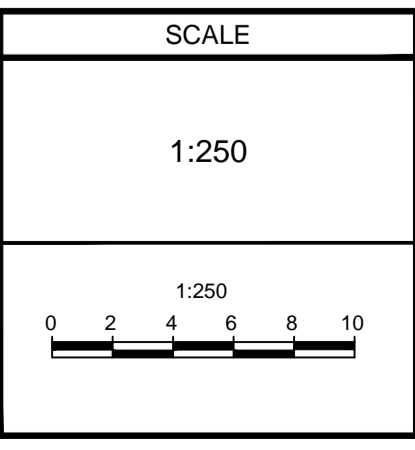
### PLANT LIST

KEY	No.	BOTANICAL NAME	COMMON NAME	SIZE	SPACING
<b>DECIDUOUS TREES</b>					
AFAB	3	ACER X FREEMANII 'AUTUMN BLAZE'	AUTUMN BLAZE	60mmWB	AS SHOWN
AR	3	ACER RUBRUM	NATIVE RED MAPLE	60mmWB	AS SHOWN
GTS	4	GLEDITSIA TRI. VAR. INERMIS 'SHADEMASTER'	SHADEMASTER HONEYLOCUST	60mmWB	AS SHOWN
QM	1	QUERCUS MACROCARPA	BURR OAK	60mmWB	AS SHOWN
<b>DECIDUOUS SHRUBS</b>					
psp	16	PHYSOCARPUS OPU. 'SEWARD PP14821'	SUMMER WINE NINEBARK	2g	AS SHOWN
smc	17	SPIRAEA JAPONICA 'MAGIC CARPET'	MAGIC CARPET SPIREA	2g	AS SHOWN
<b>PERENNIALS</b>					
At	53	AESCLEPIA TUBEROSA	BUTTERFLY WEED	1g	40cm O.C.
Rfg	85	RUDEBECKIA FULGIDA 'GOLDSTURM'	GOLDSTRUM CONEFLOWER	1g	40cm O.C.

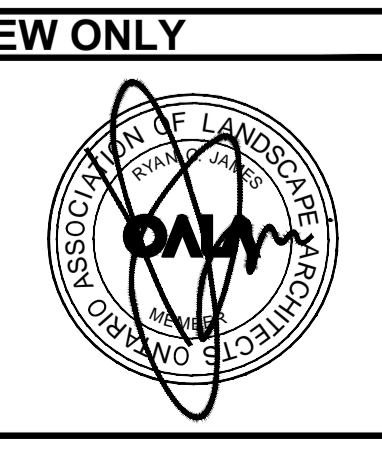
**NOTE:**  
THE POSITION OF ALL POLE LINES, CONDUITS, WATERMANS, SEWERS AND OTHER UNDERGROUND AND OVERGROUND UTILITIES AND STRUCTURES IS NOT NECESSARILY SHOWN ON THE CONTRACT DRAWINGS, AND WHERE SHOWN, THE ACCURACY OF THE POSITION OF SUCH UTILITIES AND STRUCTURES IS NOT GUARANTEED. BEFORE STARTING WORK, DETERMINE THE EXACT LOCATION OF ALL SUCH UTILITIES AND STRUCTURES AND ASSUME ALL LIABILITY FOR DAMAGE TO THEM.

**NOT FOR CONSTRUCTION**

No.	REVISION	DATE	BY
1.	ISSUED FOR SITE PLAN CONTROL	AUG 14/14	RGJ



DESIGN	RGJ
CHECKED	RGJ
DRAWN	ML
CHECKED	RGJ
APPROVED	GAM



**NOVATECH**  
Engineers, Planners & Landscape Architects  
Suite 200, 240 Michael Cowpland Drive  
Ottawa, Ontario, Canada K2M 1P6  
Telephone (613) 254-9643  
Facsimile (613) 254-5867  
Website www.novatech-eng.com

REFER TO _____ FOR ADDITIONAL NOTES	LOCATION 1290 TRIM ROAD KIDS COSMIC KINGDOM
DRAWING NAME LANDSCAPE PLAN	PROJECT No. 114016
	REV REV # 1
	DRAWING No. 114016-L

M:\2014\114016\CAD\Landscaping\SPA - Submission\114016-L.dwg, LT, Aug 13, 2014, 3:54pm, mlak