

LOCATION MAP
SCALE: N.T.S.

LEGAL DESCRIPTION
PART 4 & 7 LOT 15
CONCESSION 5
GEOGRAPHIC TOWNSHIP OF HUNTLEY
CITY OF OTTAWA

SURVEY PREPARED BY:
WEBSTER & SIMMONS SURVEYING LTD.
ONTARIO LAND SURVEYORS
DATED: 18 SEPTEMBER 2001

ZONING
ZONED (PART 6)
ZONED (PART 7)

MIN. LOT AREA
20000 sq.m

MIN. LOT WIDTH
40.00 m

MAX. BUILDING HEIGHT
10.00 m

MIN. FRONT YARD SETBACK
6.00 m

MIN. INTERIOR SIDE YARD SETBACK
10.00 m

MIN. REAR YARD SETBACK
10.00 m

MIN. CORNER YARD SETBACK
10.00 m

MAX. LOT COVERAGE
15%

LANDSCAPING OF YARDS
OUTDOOR STORAGE

MIN. LANDSCAPED AREA
15% OF THE AREA OF PARKING LOT

MIN. WIDTH OF LANDSCAPE BUFFER OF PARKING LOT - ABUTTING A STREET
3.00 m

MIN. WIDTH OF LANDSCAPE BUFFER OF PARKING LOT - NOT ABUTTING A STREET
1.50 m

MIN. PARKING SPACES
0.75 per 100 sq.m GFA

MIN. HANDICAP PARKING SPACES
1 per 1500 sq.m GFA

MIN. BICYCLE SPACES
1 per 350-4494 sq.m GFA

CURRENT BY-LAW
RC2(227) S11-m
RC2(225) S11-h

PROPOSED
RC4
20000 sq.m
40.00 m
10.00 m
6.00 m
10.00 m
10.00 m
15%

FRONT & CORNER
INTERIOR SIDE & REAR
15% OF THE AREA OF PARKING LOT
3.00 m
1.50 m

• 1798.65 sq.m + 1865.03 sq.m / 100 x 0.75
= 27.49
= 28 SPACES
= 1 SPACE
• 1798.65 sq.m + 1865.03 sq.m / 1500
= 2.44
= 3 SPACES
= 1 SPACE

MIN. PARKING SPACE DIMENSIONS
MIN. HANDICAP PARKING DIMENSIONS
MIN. BICYCLE SPACE DIMENSIONS
MIN. LOADING SPACE DIMENSIONS

2.6 m x 5.2 m
3.66 m x 5.2 m
0.6 m x 1.8 m
3.9 m x 4.0 m

SITE & BUILDING INFORMATION
STANDARD PARKING PROVIDED
HANDICAP PARKING PROVIDED
TOTAL PARKING SPACES PROVIDED
BICYCLE SPACES PROVIDED
LOADING SPACES PROVIDED

52 SPACES
2 SPACES
4 SPACES
2 SPACES

GROUND FLOOR AREA (OUTSIDE OF CLADDINGS)
BUILDING HEIGHT
FUTURE STORAGE BUILDING
GROUND FLOOR AREA (OUTSIDE OF CLADDINGS)
BUILDING HEIGHT
LOT WIDTH
LOT DEPTH
LOT AREA
PARKING LOT AREA
LANDSCAPED AREA / LOT AREA
= 33940.60 / 46449.40

1798.65 sq.m (4360.56 sq.ft)
10.57 m
1865.03 sq.m (20075.06 sq.ft)
1.10.00 m
274.49 m
60.20 m
46449.40 sq.m (500456.26 sq.ft)
9494.62 sq.m (102763.91 sq.ft)
33940.60 sq.m (364251.13 sq.ft)
= 72.78 %
= 1798.65 + 1865.03 / 46449.40
= 7.88 %

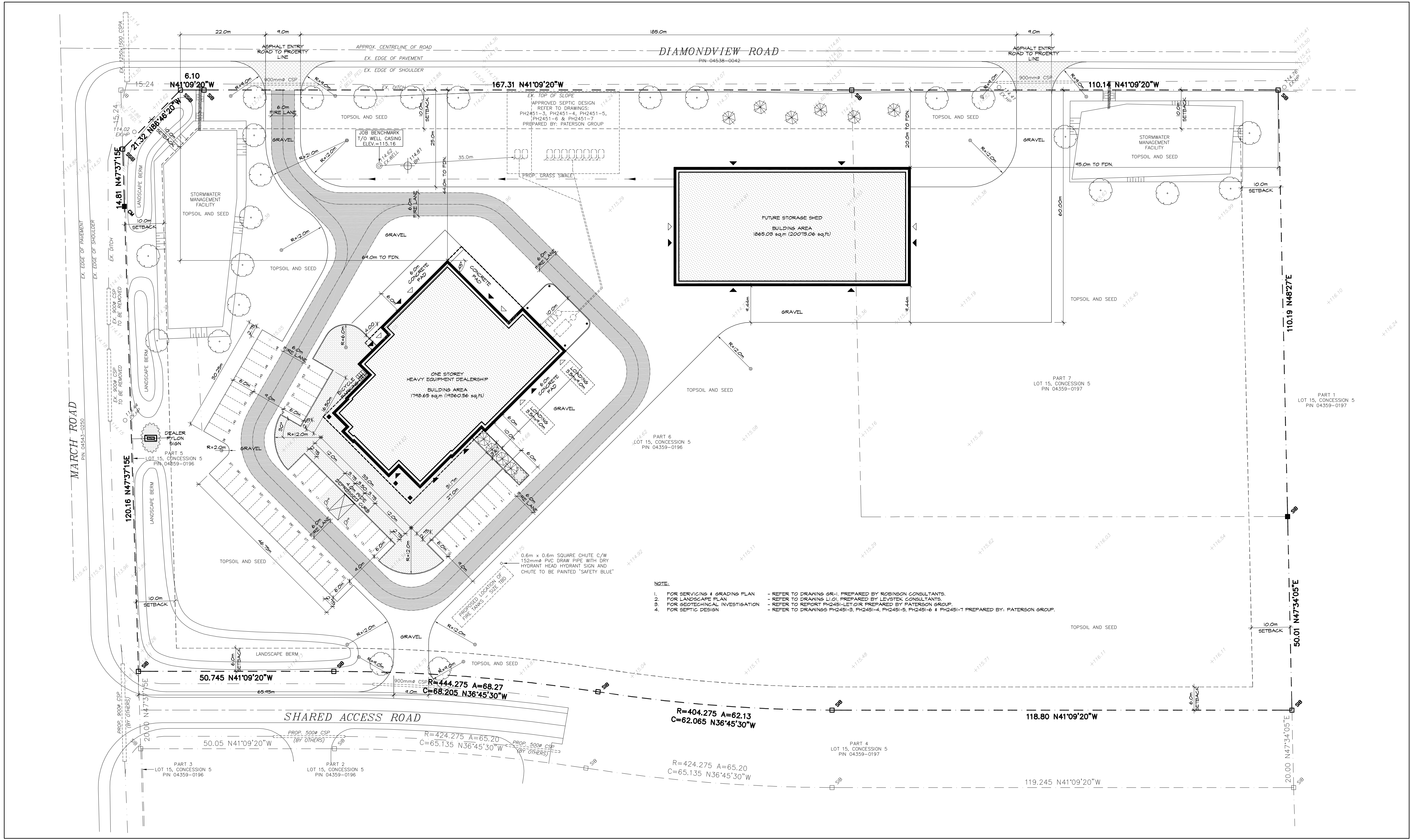
LOT COVERAGE

LEGEND

- NEW INTERLOCK WALK
- NEW ASPHALT PAVING
- EXISTING FENCE
- NEW FENCE
- EXIST. FINISH
- BUILDING LIGHTING
- HANDICAP PARKING
- PAINTED STEEL BOLLARD
- OVERHEAD DOOR
- MAN DOOR

NOTES:

- ALL CONTRACTORS MUST COMPLY WITH ALL CODES AND BY-LAWS HAVING JURISDICTION.
- IT IS THE RESPONSIBILITY OF THE APPROPRIATE CONTRACTOR TO CHECK & VERIFY ALL DIMENSIONS ON SITE & REPORT ALL ERRORS AND/OR OMISSIONS TO THE ARCHITECT PRIOR TO COMMENCEMENT.
- DO NOT SCALE DRAWINGS.
- DRAWINGS MAY NOT BE USED FOR CONSTRUCTION UNTIL SIGNED BY THE ARCHITECT.
- COPYRIGHT NOTICE
THIS DRAWING AND DRAWINGS CONTAINED HEREIN ARE THE EXCLUSIVE PROPERTY OF DAVID MAILING ARCHITECT ASSOCIATES INC. AND SHALL NOT BE USED OR REPRODUCED WITHOUT THE ARCHITECT'S CONSENT.
- COPYRIGHT NOTICE
COPYRIGHT IN THIS ELECTRONIC DOCUMENT BELONGS TO DAVID MAILING ARCHITECT ASSOCIATES INC. THIS ELECTRONIC DOCUMENT MAY NOT BE FORWARDED TO OTHERS, TRANSMITTED, DOWNLOADED OR REPRODUCED IN ANY FORMAT, WHETHER PRINT OR ELECTRONIC WITHOUT THE EXPRESS, WRITTEN PERMISSION OF THE COPYRIGHT OWNER.
- DISCLAIMER
USE OF THIS ELECTRONIC DOCUMENT IS AT THE USER'S OWN RISK. THE USER SHALL INDEMNIFY AND SAVE HARMLESS THE ARCHITECT, HIS/HER EMPLOYEES, AGENTS AND CONSULTANTS FROM AND AGAINST ALL CLAIMS, LOSSES, DEMANDS, COSTS AND EXPENSES (INCLUDING LEGAL FEES), DAMAGES, OR RECOVERIES (INCLUDING ANY AMOUNTS PAID IN SETTLEMENT) ARISING BY REASON OF CAUSED OR ALLEGED TO BE CAUSED, BY THE USER'S RELIANCE ON THIS ELECTRONIC DOCUMENT.



2 SITE PLAN
SCALE: 1:500

2	SITE PLAN APPROVAL CITY COMMENTS	09.03.14
1	ISSUED FOR SITE PLAN APPROVAL	10.03.14

NO.	ITEM	DATE

REVISIONS

DAVID MAILING ARCHITECT ASSOCIATES INC.

57 kyle avenue
stittsville, ontario
k2s 1g9
ph: 613 836 4010
fax: 613 836 4611
www.dmailing.com
info@dmailing.com

ONTARIO ASSOCIATION OF ARCHITECTS

DAVID MAILING ARCHITECT ASSOCIATES INC.
LICENCE 4056

PROJECT
REIS EQUIPMENT DEALERSHIP
1575 DIAMONDVIEW ROAD
OTTAWA (CARP), ONTARIO, KOA 1LO

CLIENT
795144 ONTARIO INC.
140 STONEHOME CRESCENT
ALMONTE, ONTARIO, KOA 1AO

DRAWING
ZONING, SITE & BUILDING INFORMATION
LOCATION MAP & SITE PLAN

SCALE	AS NOTED	SHEET NO.
DRAWN BY	PK	A1
DATE	FEBRUARY 2014	
CHECKED BY	DM	
APPROVED BY	DM	
PROJECT NO.	213-09	