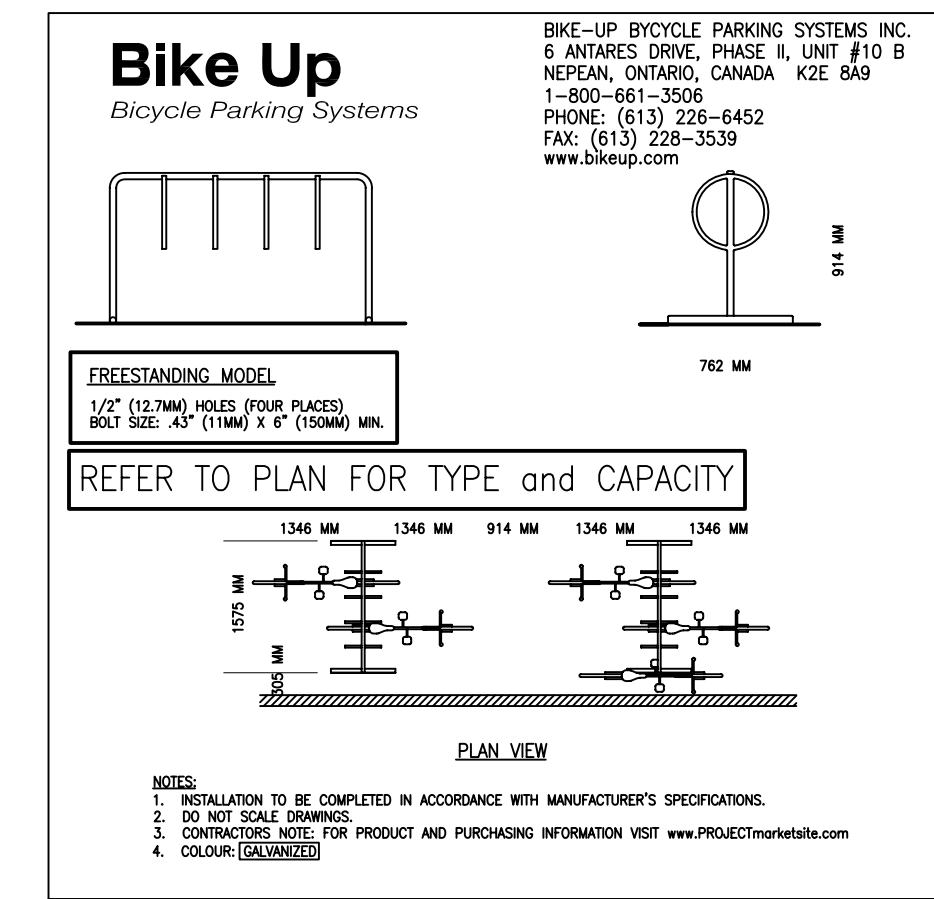


1
L1.01 PLANTING DETAILS (TYPICAL) NTS



2
L1.01 BICYCLE RACK DETAIL (TYPICAL) NTS

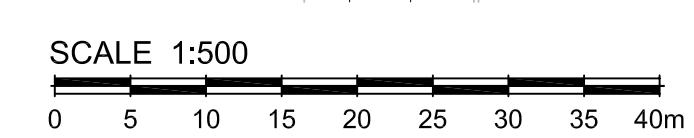
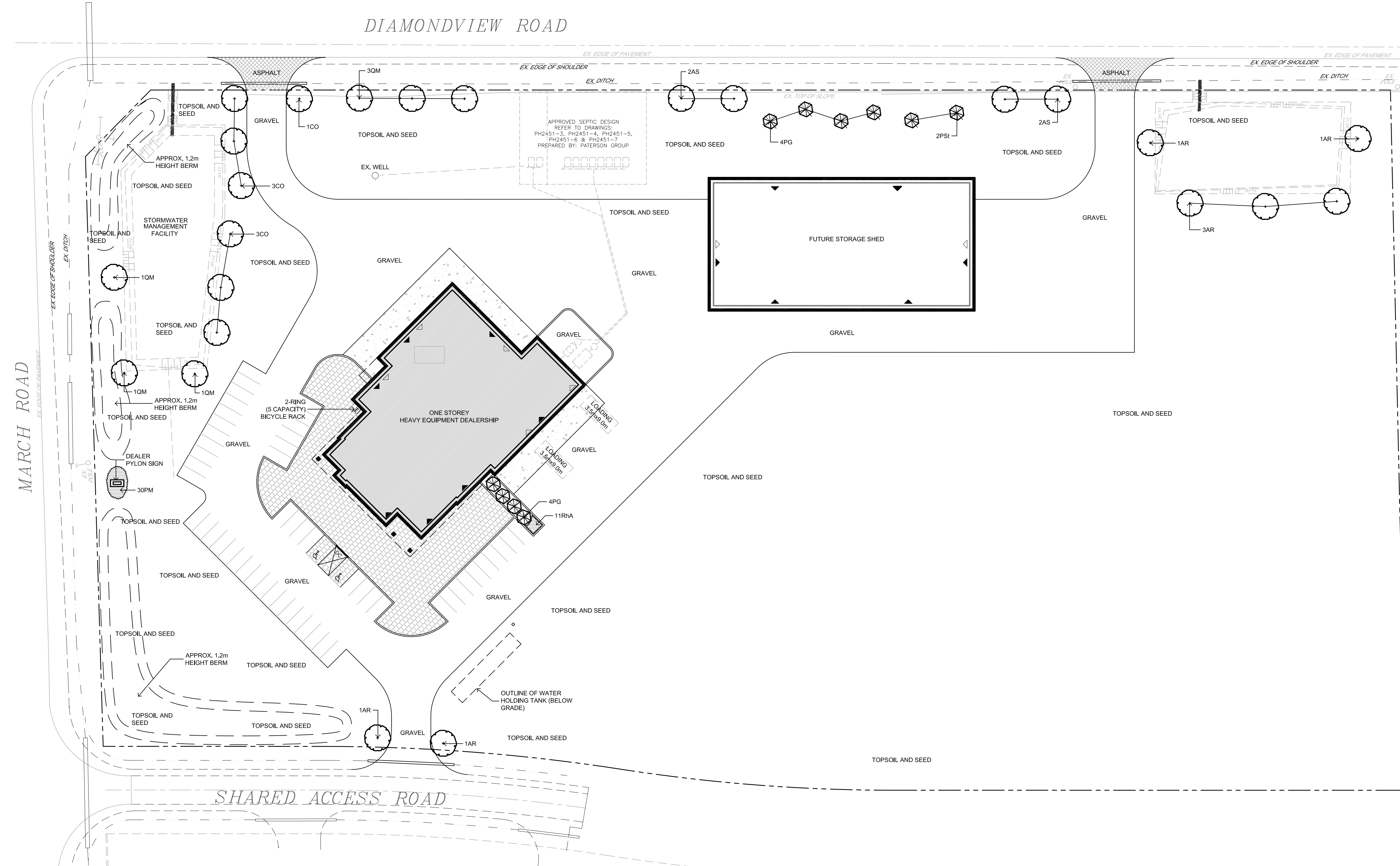
PLANT MATERIAL SCHEDULE

CODE	BOTANICAL NAME	COMMON NAME	QTY.	SIZE	REMARKS
DECIDUOUS TREES					
1AR	ACER RUBRUM	RED MAPLE	7	60mm cal	B&B
CO	CELTIS OCCIDENTALIS	COMMON HACKBERRY	7	60mm cal	B&B
AS	ACER SACCHARUM	SUGAR MAPLE	4	60mm cal	B&B
CM	QUERCUS MACROCARPA	BURR OAK	6	60mm cal	B&B
CONIFEROUS TREES					
PG	PICEA GLAUCIA	WHITE SPRUCE	8	180 cm ht	B&B
PSI	PINUS STROBUS	WHITE PINE	2	180 cm ht	B&B
DECIDUOUS SHRUBS					
RhA	RHUS AROMATICA	FRAGRANT SUMAC	11	50cm ht	potted, 100cm o/c
CONIFEROUS SHRUBS					
PM	PINUS MUGO MUGHUS	MUGHO PINE	30	50cm ht	potted, 100cm o/c

LEGEND / SYMBOL

	PROPOSED DECIDUOUS TREE/LARGE FLOWERING SHRUBS
	PROPOSED CONIFEROUS TREE
	PROPOSED DECIDUOUS/CONIFEROUS SHRUBS AND GROUNDCOVERS
	UNIT PAVING
	CONCRETE PAD
	ASPHALT PAVING
	BICYCLE RACK
	PROPOSED BERM

- GENERAL NOTES**
- This drawing shall be read in conjunction with all relevant Architectural, Engineering and related Drawings and Documents.
 - Refer to Engineering Drawings for Grading and Servicing.
 - Refer to Architectural Drawings (Site Plan) for Site layout.
 - Contractor shall provide the location(s) of all services/utilities by consulting Municipal Authorities and Utility companies and shall be responsible for adequate protection from damage during construction.
 - Plant material shall be No. 1 Grade and shall comply with the Metric Guide Specifications For Nursery Stock (latest edition), published by the Canadian Nursery Trades Association.
 - Plant Material locations are **Schematic / Approximate only**. Contractor shall stake out locations on site prior to work.
 - Shrubs** shall be planted in a continuous prepared bed of 450mm depth planting soil mix covered over with a woven polypropylene weed control fabric (LANDSCAPE FABRIC-Green-Line by Thrace-LINQ) and 75mm depth composted pine mulch to finish grade, as specified. Seed areas to receive 150mm topsoil. Grass seed shall be Certified Canada No. 1 Grade in accordance with Government of Canada Seeds Acts and Regulations. Reinstatement areas damaged or disturbed beyond the limit of Work.
 - Contractor shall guarantee all plant material for a period of one (1) full year from the date of final acceptance. Substitutions shall not be permitted without written approval from the Consultant.
 - Contractor shall advise Consultant a minimum of **48hrs.** prior to proceeding landscape work and any required inspections.
 - THIS PLAN HAS BEEN PREPARED FOR MUNICIPAL SITE PLAN APPROVAL ONLY AND MAY NOT BE USED FOR ANY OTHER PURPOSE.**



NOT FOR CONSTRUCTION

2.	MAY 9/14	PER COMMENTS
1.	MAR. 7/14	ISSUE FOR SITE PLAN APPROVAL
no.	date	revision
North Arrow		Stamp

Contractor shall check and verify all dimensions on site and report all errors and/or omissions to the Consultant.
 Work to be done in accordance with all applicable codes and by-laws.
 Do not scale Drawing.
 Copyright reserved. This Drawing is the exclusive property of Levstek Consultants Inc. and shall not be used without consent.

Consultant
LEVSTEK CONSULTANTS
 LANDSCAPE ARCHITECTS
 5871 Hugh Crescent - Ottawa - Ontario - K0A 2W8
 613 - 826 - 9518

Client
 795144 ONTARIO INC.
 1575 DIAMONDVIEW ROAD
 CARP, ONTARIO, K0A 1L0

Project
REISS EQUIPMENT DEALERSHIP

Drawing Title
LANDSCAPE PLAN

Drawn	Date	Drawing No.
MBG	MAR 2014	L1.01
Scale	Project No.	
1:500	1086	