



Chamberlain Architect Services Limited
 5096 South Service Road Suite 103
 Burlington, Ontario L7L 5H4 CANADA
 Tel: 905.631.7777
 Fax: 905.631.7717
 www.chamberlainip.ca

LEGAL DESCRIPTION		
BLOCK 8 REGISTERED PLAN 4M-1325 CITY OF OTTAWA		
SURVEYOR'S INFORMATION		
FAIRHALL MOFFATT & WOODLAND LIMITED 100-600 TERRY FOX DRIVE, KANATA, ON K2L 4B6 T: (613) 591-2580 F: (613) 591-1495		
REFERENCE NO. 10 - 4M-1325		
CREDIT NOTES:		
THIS SITE PLAN IS BASED UPON AND MUST BE READ IN CONJUNCTION WITH THE TOPOGRAPHIC SURVEY PREPARED BY FAIRHALL MOFFATT & WOODLAND LIMITED, DATED DEC. 19, 2011. CHAMBERLAIN ARCHITECT SERVICES LIMITED ACCEPTS NO RESPONSIBILITY FOR THE ACCURACY, OR COMPLETENESS OF THE DATA SUPPLIED AND SUCH DATA IS NOT INCLUDED UNDER SEALS OF CERTIFICATION, IF ANY.		

NO.	ISSUED	DATE
01	Site plan Application	13-12-10

GENERAL NOTES:		
1. ALL CONC. BASES TO BE ARCHITECTURAL BASE I. FLAG POLE, LIGHT POST ETC.		
2. ALL MECHANICAL UNITS ON THE GROUND TO BE SCREENED WITH A 3/4" CEDAR FENCE, UNLESS OTHERWISE NOTED. REFER TO LANDSCAPE DRAWINGS		

ABBREVIATIONS:		
CU	CONDENSING UNIT	PRO. PROVIDED
FFE	FINISHED FLOOR ELEVATION	REQ. REQUIRED
FH	FIRE HYDRANT	SF SQUARE FEET
G.F.A.	GROSS FLOOR AREA	SM SQUARE METERS
HDP	HEAVY DUTY PAVING	TYP. TYPICAL
HP	HANDICAP PARKING	
LDP	LIGHT DUTY PAVING	
LS	LIGHT STANDARD	

DEVELOPMENT DATA				
	sq.m	sq.ft	acre	coverage
SITE AREA PHASE 2	9,106.5	98,025	2.25	
	2,399.5	25,829	0.6	
PHASE 1	6,707	72,196	1.65	100 %
LANDSCAPE AREA	1,342	14,446		20%
ASPHALT PAVING	3,528	37,978		53%
SIDEWALKS & PATIOS	489	5,264		7%
GROUND FLOOR AREA	1,348	14,510		20%
TOTAL GROSS FLOOR AREA	6,614	71,195		

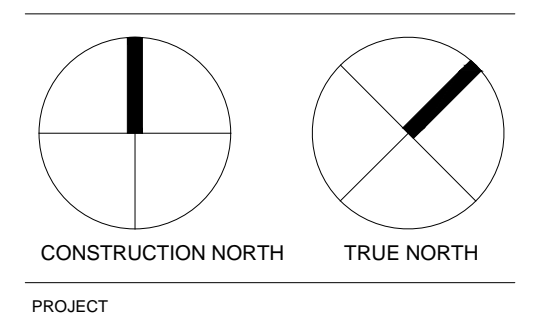
DO NOT SCALE DRAWINGS. USE ONLY DRAWINGS MARKED 'ISSUED FOR CONSTRUCTION'. VERIFY CONFIGURATIONS AND DIMENSIONS ON SITE BEFORE BEGINNING WORK. NOTIFY ARCHITECT IMMEDIATELY OF ANY ERRORS, OMISSIONS OR DISCREPANCIES.
 CHAMBERLAIN ARCHITECT SERVICES LIMITED AND CHAMBERLAIN CONSTRUCTION SERVICES LIMITED HAVE SIMILAR OWNERSHIP.
 CLIENT

PARKING CALCULATIONS		
ONE SPACE PER SUITE	116	
TOTAL REQUIRED	116	
TOTAL PROVIDED	133	
ACCESSIBLE PARKING		
TOTAL REQUIRED = 2% OF TOTAL PARKING	3	
TOTAL PROVIDED	3	
OFF-STREET LOADING SPACES: 9m x 3.7m	1	
BICYCLE RACK SPACES (1/1000m2)	7	
HOTEL		

ZONING INFORMATION		
ZONED: MIXED-USE CENTRE - MC[1325] F(1.5) H(21)		
TYPICAL PARKING STALL	2.6m x 5.2m	
ACCESSIBLE PARKING STALL	3.6m x 5.2m	
DRIVE AISLE	6.7m	

ZONING REQUIREMENTS		
	Required (sq. m / m)	Provided (sq. m / m)
MINIMUM LOT AREA	NO MIN.	6,707
MINIMUM LOT WIDTH	NO MIN.	
MAXIMUM FLOOR SPACE INDEX	1.5	0.986
MAXIMUM HEIGHT	21m	16.0m
MIN. WIDTH OF LANDSCAPED AREA	3m (>100 CAR PARKING)	3m
SETBACKS		
MAX. FRONT YARD SETBACK	6.0m	3.19m
REAR YARD SETBACK	NO MIN.	44.48m
SIDE YARD SETBACK	NO MIN.	5.13m

DRAWING LEGEND		
	PUBLIC ENTRANCES (KEY CARDED AT BUILDING ENDS)	
	HOTEL GUEST EXITS POINT - EMERGENCY / SERVICE POINTS	
	FIRE HYDRANT	
	FREE STANDING SIGNS F.R.S. = FIRE ROUTE SIGN H.C.S. = HANDICAP BARRIER FREE SIGNS	
	SIAMESE CONNECTION	
	EXTERIOR LIGHT STANDARDS	
	CATCH BASIN. SEE SITE SERVICING DWG.	
	MAN HOLE. SEE SITE SERVICING DWG.	
	NUMBER OF SPACES IN A ROW OF PARKING	
	TRAFFIC DIRECTION	
	FREE STANDING CONDENSING UNIT C/W LEVELED CONC. PAVEMENT BASE	
	NEW PAD MOUNTED TRANSFORMER	
	BUILDING LIGHTUPS. REFER TO ELECTRICAL SITE PLAN FOR MORE DETAIL	
	DESIGNATED HANDICAPPED PARKING SPACE	



PROPOSED TOWNEPLACE SUITES

5 STOREY 116 SUITE

1251 Maritime Way Kanata, ON

SHEET NAME

SITE PLAN

START DATE July, 2013

DRAWN BY SHS

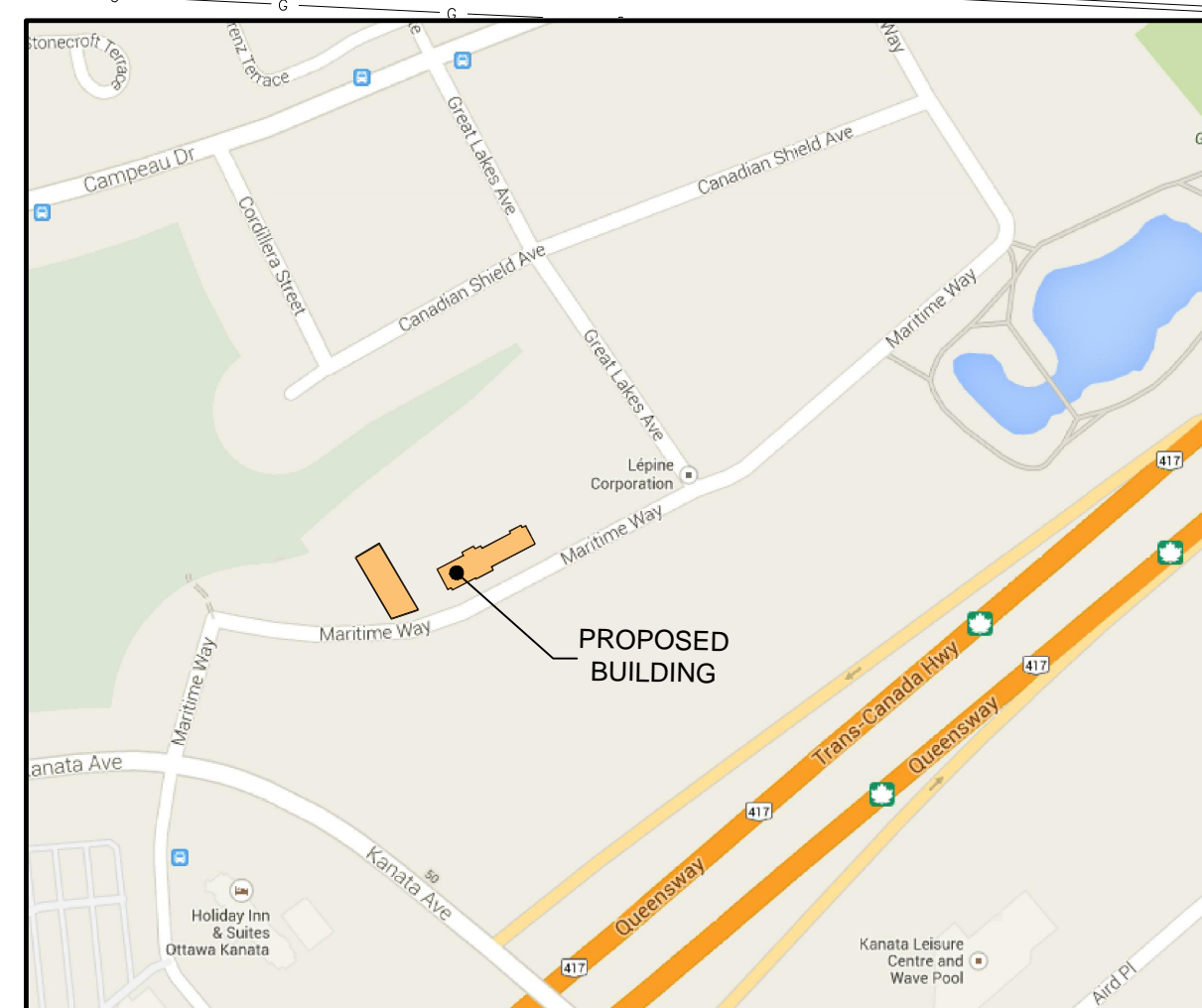
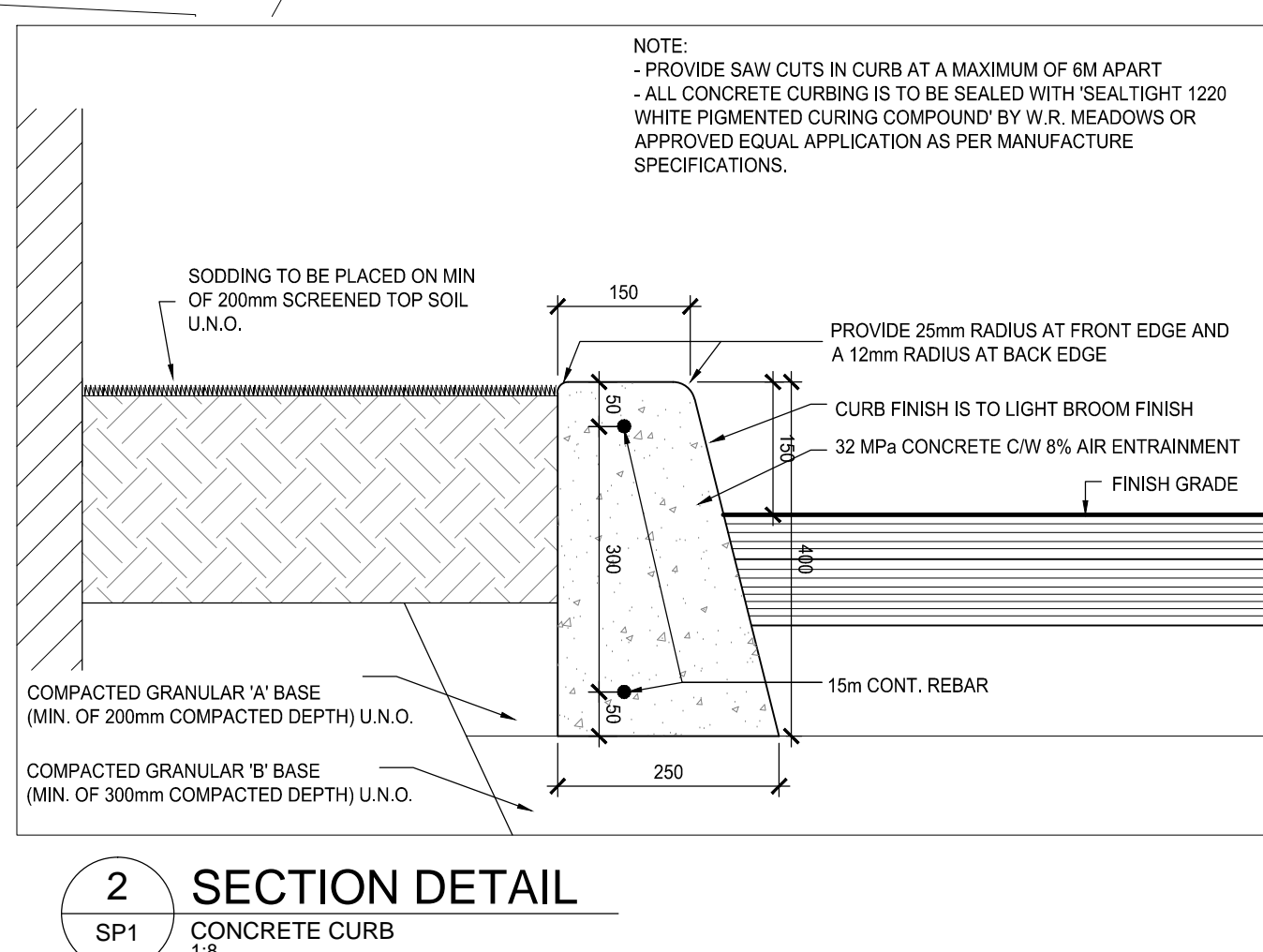
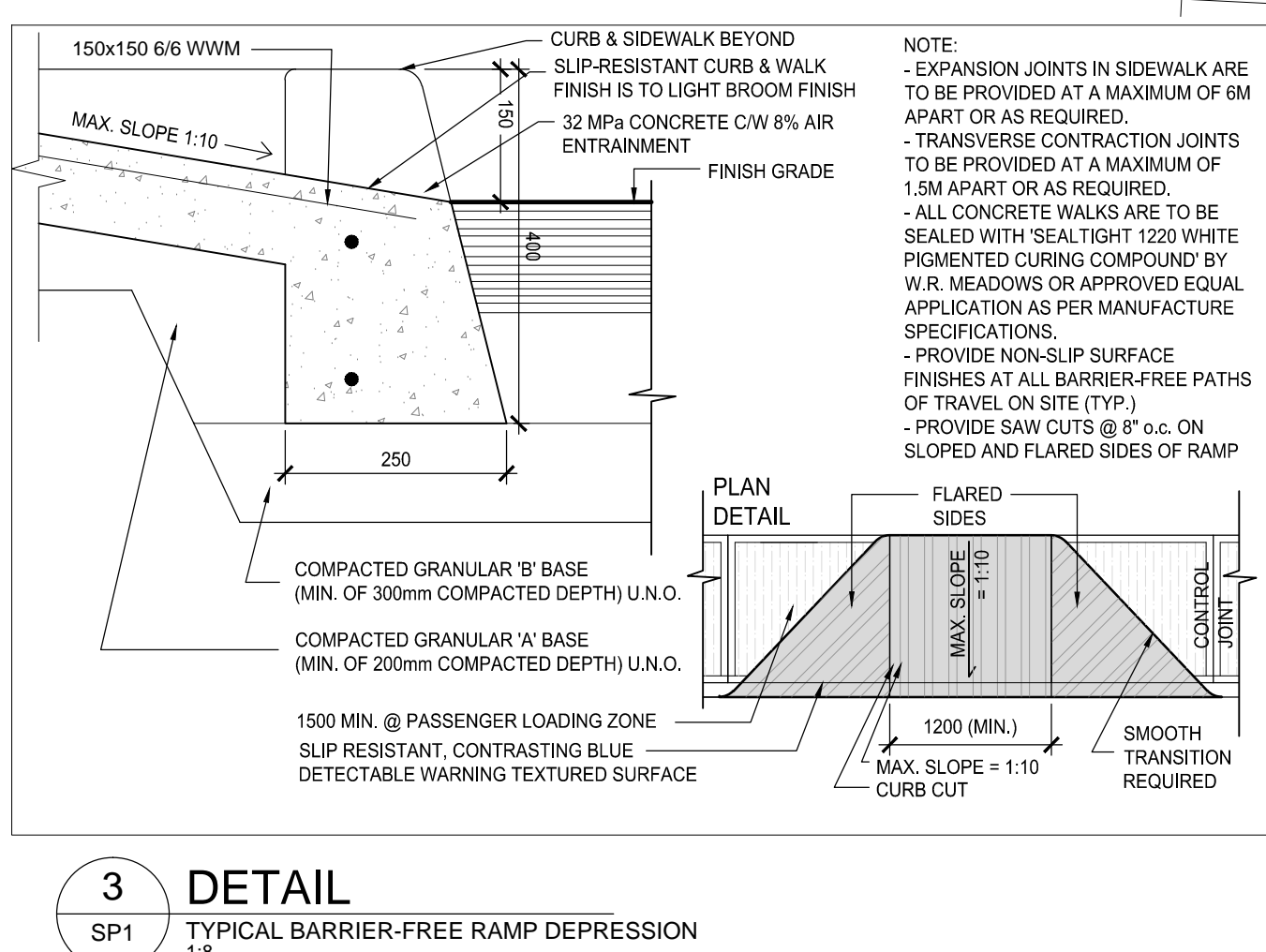
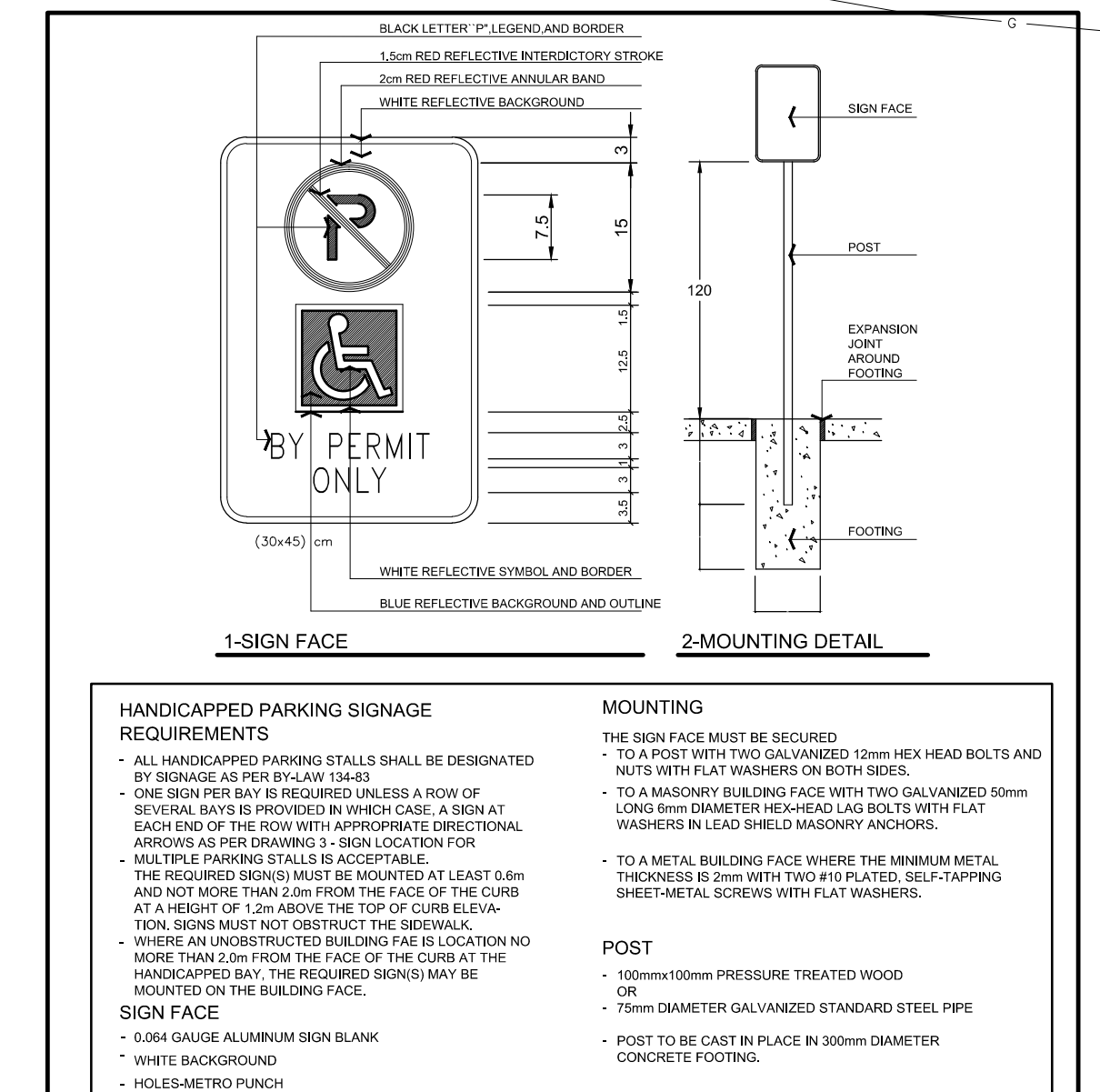
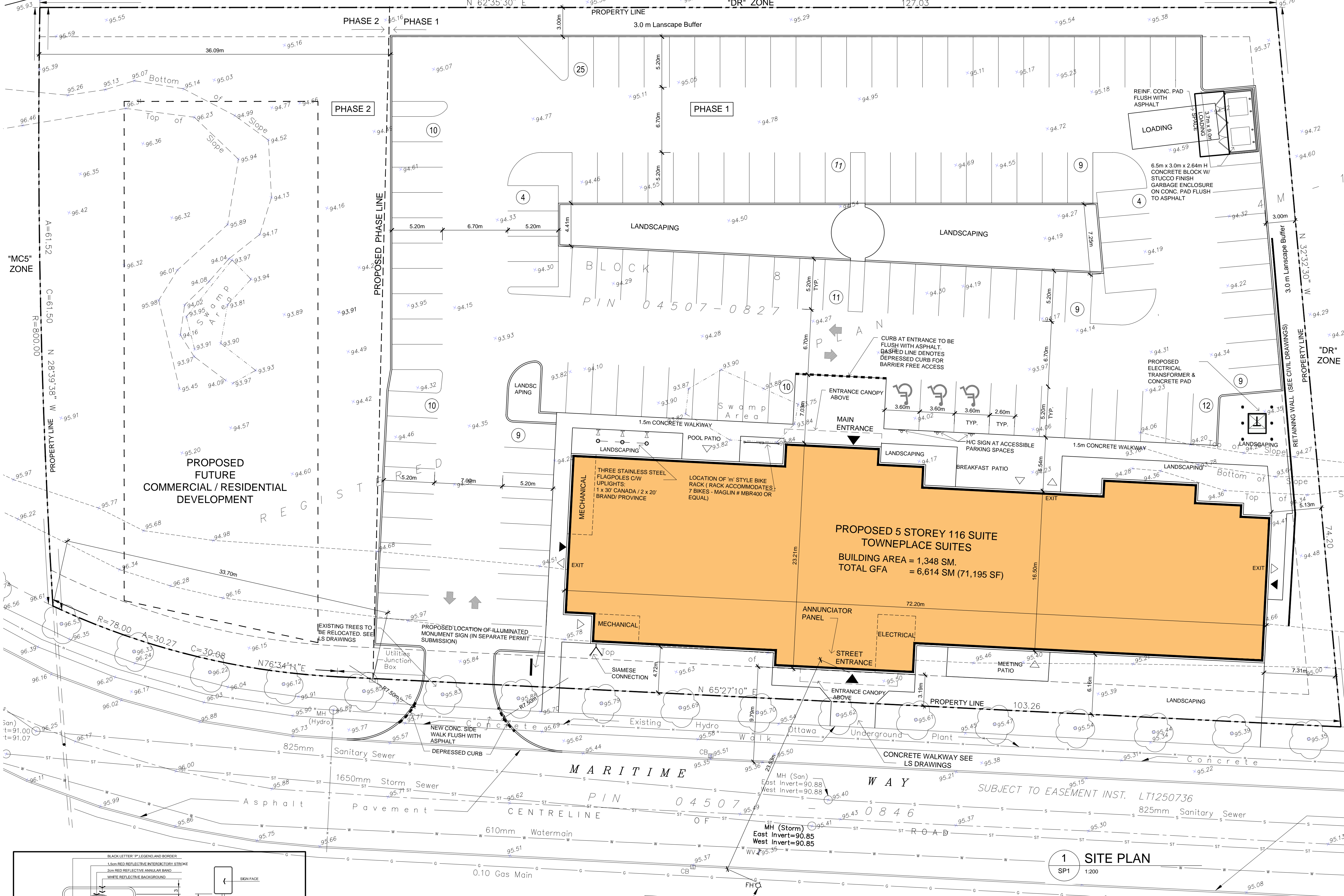
CHECKED BY SHS

SCALE AS SHOWN

PROJECT NO. 113039

DRAWING

SP1



C:\113039_Townplace Kanata Maritime Drive\113039_TPS_Kanata_Locall_Hittomas.rvt 26/11/2013 2:24:48 PM