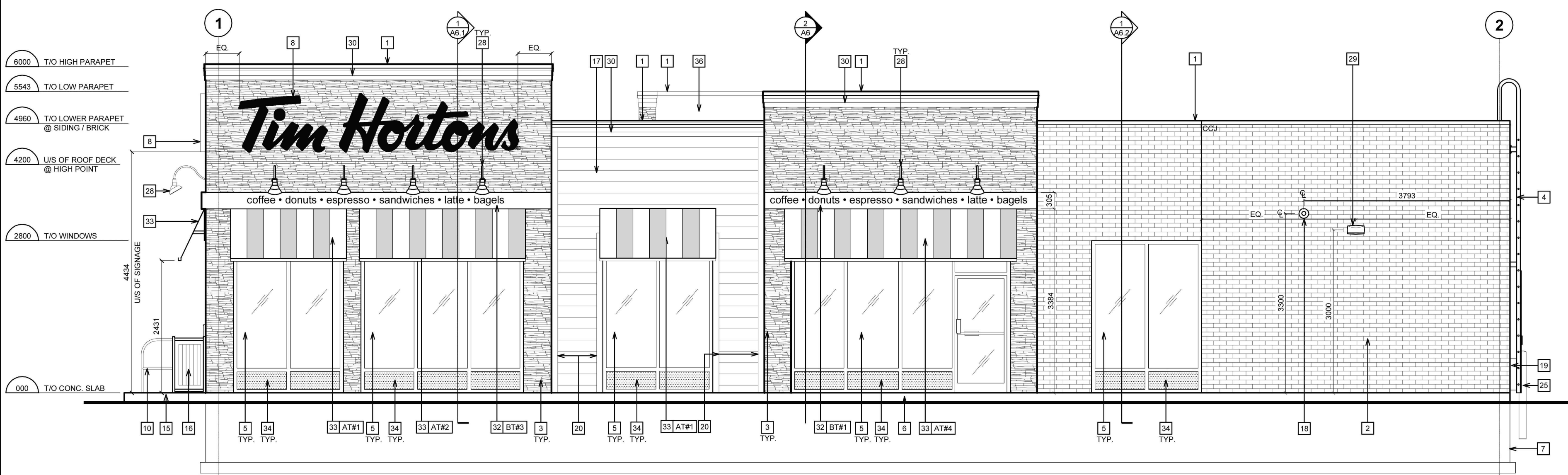
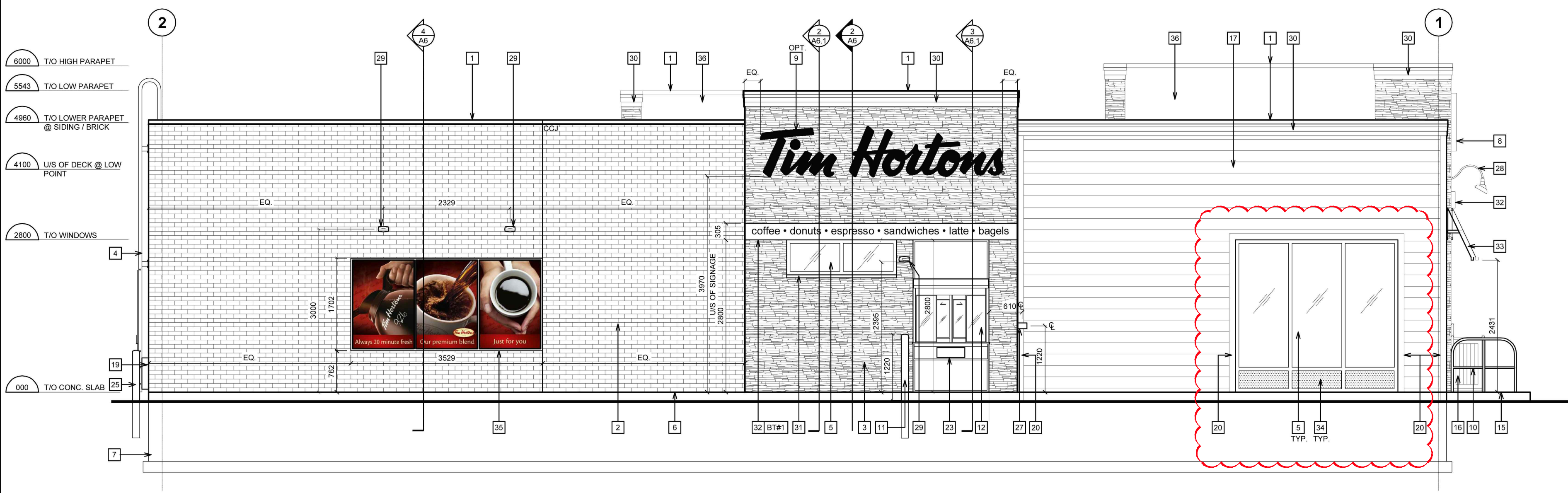


IMAGES: S:\2013 Projects\13A102 413 March Road, Ottawa\Design Dwg\Tim Horton\13A102 A4 - Tim Hortons - Elev-A4.3.jpg
S:\2013 Projects\13A102 413 March Road, Ottawa\Design Dwg\Tim Horton\13A102 A4 - Tim Hortons - Elev-A4.4.jpg
S:\2013 Projects\13A102 413 March Road, Ottawa\Design Dwg\Tim Horton\13A102 A4 - Tim Hortons - Plan-A4.1.jpg
S:\2013 Projects\13A102 413 March Road, Ottawa\Design Dwg\Tim Horton\13A102 A4 - Tim Hortons - Roof Plan-A4.2.jpg

FILE NAME: \\PROJECT-SERVER\Projects\2013 Projects\13A102 401 March Road, Ottawa - ON\Design Dwg\Tim Horton\13A102 A2 - Tim Hortons - Plan & Elev.dwg



1 NORTH ELEVATION
A5.1 SCALE: 1:50



2 SOUTH ELEVATION
A5.1 SCALE: 1:50

SYMBOL LEGEND	
	SECTION NUMBER DRAWING SHEET NUMBER
	BUILDING SECTION NUMBER DRAWING SHEET NUMBER
	NOTE REFERENCE REFER TO ELEVATION NOTES
	AWNING/BAND TYPE

GENERAL NOTES	
1.	REFER TO EXTERIOR FINISH SCHEDULE FOR CAULKING COLOUR.

MASONRY/MORTAR SPEC.	
1.	THE MORTAR COLOURING BY ROCKWOOD PIGMENTS. SEE FINISH SCHEDULE A5
2.	THE SPECIFICATIONS OF THE COLOURING MANUFACTURER ARE TO BE FOLLOWED.
3.	ALL BRICK JOINTS ARE TO BE RAKED 6mm DEEP.
4.	ALL BRICK MORTAR IS TO BE COLOURED AS SPECIFIED.
5.	MASONRY WORK SHALL NOT PROCEED WITHOUT PRIOR APPROVAL OF TDL GROUP CORP.
6.	ANY BRICK MASONRY WHICH DOES NOT MATCH THE APPROVED SPECIFICATION WILL BE REPLACED AT THE CONTRACTOR'S EXPENSE.
7.	THE CONTRACTOR SHALL BECOME FAMILIAR WITH AND FOLLOW ALL DRAWINGS AND SPECIFICATIONS.

AWNING SCHEDULE		
TYPE	SIZE	QUANTITY
AWNING TYPE #1	2135mm x 914mm	3
AWNING TYPE #2	3050mm x 914mm	1
AWNING TYPE #3	3660mm x 914mm	1
AWNING TYPE #4	4270mm x 914mm	1

DECORATIVE BANDS		
TYPE	LENGTH	QUANTITY
BAND TYPE #1	5015mm x 305mm	2
BAND TYPE #2	6437mm x 305mm	1
BAND TYPE #3	6816mm x 305mm	1
NOTE: 1. REFER TO SPECIFICATIONS ON SHEET SP4 FOR APPROVED SUPPLIERS LIST.		

PRODUCT	MANUF.	TYPE & COLOUR	SUPPLIER/CONTACT
PREFORMED METAL FLASHING	FIRESTONE	FLASHING AT PARAPETS: COLOUR: 'CHARCOAL GRAY'. FLASHING AT FOUNDATION: COLOUR: 'SANDSTONE SR'. ALL FLASHING AT WINDOWS IS TO BE CLEAR ANODIZED.	FIRESTONE BUILDING PRODUCTS CUSTOMER SERVICE TELEPHONE: 1-888-292-6265 ext. 77680 FAX: 1-877-686-3022
ANODIZED ALUMINUM	ALUMICOR LIMITED	ALUMINUM FINISH: CLASS 1, CLEAR ANODIZED 0004 ANODIZING BY ALUMICOR. CAULKING BETWEEN WINDOW FRAME & FIBER CEMENT STONE. COLOR: ANODIZED ALUMINUM (TREMCO DYMOMIC)	CONTACT: CUSTOMER SERVICE TELEPHONE: 1-877-258-6428
FIBER CEMENT SIDING	ALLURA	SMOOTH LAP, H - 209mm, L - 3657mm, THICKNESS - 8mm COLOUR: #615 AUTUMN RED FRANKLIN INTERNATIONAL CAULKING - COLOUR TO MATCH ADJACENT SIDING NOTE: TOUCH-UP PAINT IS TO BE PURCHASED THROUGH HJCC; AUTUMN RED #15276615	HAINES, JONES & CADBURY CORPORATION CONTACT: TIM HORTONS CUSTOMER SERVICE TELEPHONE: 866-256-3885 FAX: 484-398-7053 EMAIL: TH@HJCcorp.ca WEBSITE: www.hjccorp.ca
FIBER CEMENT TRIM	ALLURA	SMOOTH TRIM, W-114mm, L - 3657mm, THICKNESS - 25mm COLOUR: #615 AUTUMN RED FRANKLIN INTERNATIONAL CAULKING - COLOUR TO MATCH ADJACENT SIDING NOTE: TOUCH-UP PAINT IS TO BE PURCHASED THROUGH HJCC; AUTUMN RED #15276615	HAINES, JONES & CADBURY CORPORATION CONTACT: TIM HORTONS CUSTOMER SERVICE TELEPHONE: 866-256-3885 FAX: 484-398-7053 EMAIL: TH@HJCcorp.ca WEBSITE: www.hjccorp.ca
VERSETTA WAINSCOT CAP	BORAL	WAINSCOT CAP H-56MM, 914MM, THICKNESS - 76MM	HAINES, JONES & CADBURY CORPORATION CONTACT: TIM HORTONS CUSTOMER SERVICE TELEPHONE: 1-800-263-9229
VERSETTA STONE (FIBRE CEMENT STONE PANELING)	BORAL	LEDGE STONE - TERRA ROSA H-203MM, L-914MM, THICKNESS - 38MM FRANKLIN INTERNATIONAL CAULKING #43671	CONTACT: CUSTOMER SERVICE TELEPHONE: 1-800-263-9229
VERSETTA LIGHT BOX	BORAL	ELECTRICAL STONE BOX VENEER H-203MM, L-254MM, THICKNESS-45MM	CONTACT: CUSTOMER SERVICE TELEPHONE: 1-800-263-9229
CORNICHE BAND	CANAMOULD	CORNICE BAND: STB 001 BENJAMIN MOORE #2121-10 'GRAY'. KP29 SEMI-GLOSS FINISH	CONTACT: CUSTOMER SERVICE TELEPHONE: 1-866-874-6762

EXTERIOR ELEVATION NOTES	
1	PREFINISHED METAL FLASHING. REFER TO EXTERIOR FINISH SCHEDULE.
2	FACE BRICK - CSR SIZE. REFER TO EXTERIOR FINISH SCHEDULE.
3	FIBRE CEMENT STONE PANELING. REFER TO EXTERIOR FINISH SCHEDULE.
4	ROOF ACCESS LADDER. REFER TO DETAIL 1/A8
5	ANODIZED ALUMINUM FRAMES. REFER TO WINDOW SCHEDULE ON SHEET A11.
6	EXPOSED FOUNDATION TO BE PARGED & FREE OF IMPERFECTIONS.
7	POURED CONCRETE FOUNDATION. REFER TO STRUCTURAL DRAWINGS FOR SIZE & DEPTH.
8	1067mm (42") HIGH ILLUMINATED SIGN MOUNTED ON FIBER CEMENT STONE. CONFIRM WITH TDL GROUP CORP. FOR SIZE AND SIGN PACKAGE. REFER TO ELECTRICAL DRAWINGS.
9	914mm (36") HIGH ILLUMINATED SIGN MOUNTED ON FIBER CEMENT STONE. CONFIRM WITH TDL GROUP CORP. FOR SIZE AND SIGN PACKAGE. REFER TO ELECTRICAL DRAWINGS.
10	METAL PIPE RAILING. REFER TO DETAIL 2/A8
11	150mm DIA. METAL BOLLARD FILL W/ CONCRETE C/W BOLLARD COVER. REFER TO DETAIL 5/A8.1
12	DRIVE-THRU WINDOW WITH INSULATED PANEL. REFER TO DRIVE-THRU WINDOW SCHEDULE ON SHEET A11.
13	EXIT ONLY DECAL BY TDL GROUP CORP.
14	OVERFLOW SCUPPER. REFER TO DETAIL 10/A7.
15	CONCRETE SIDEWALK (BY OTHERS). REFER TO SITE PLAN.
16	EXTERIOR RECYCLING UNIT SUPPLIED BY TDL GROUP CORP. & INSTALLED BY G.C.
17	FIBER CEMENT SIDING. REFER TO DETAILS 3/A7.1, 5/A7.1 & EXTERIOR FINISH SCHEDULE.
18	HWT CONCENTRIC VENT TO BE INSTALLED PRIOR TO MASONRY. REFER TO DETAIL 11/A7 & MECHANICAL DRAWINGS.
19	LOCATION OF GAS METER. REFER TO MECHANICAL DRAWINGS.
20	FIBER CEMENT TRIM. REFER TO DETAILS 3/A7.1, 5/A7.1 & EXTERIOR FINISH SCHEDULE.
21	LOCATION OF REMOTE SUCTION FOR GREASE INTERCEPTOR. REFER TO MECHANICAL DRAWINGS.
22	BARRIER FREE DOOR OPERATOR SWITCH LOCATION. REFER TO ELECTRICAL DRAWINGS. COORDINATE LOCATION OF AUTOMATIC DOOR OPERATORS WITH SITE PLAN AND TDL GROUP CORP. REFER TO DETAIL 3/A5.
23	CAMP BOX. REFER TO DETAILS ON SHEET A11.
24	N/A.
25	150mm METAL BOLLARD FILLED W/ CONCRETE. PAINT FINISH
26	N/A.
27	"PLEASE PAY" SIGN MOUNTED ON THE WALL.
28	GOOSENECK LIGHTING. REFER TO ELECTRICAL DRAWINGS.
29	WALL PACK. REFER TO ELECTRICAL DRAWINGS.
30	CORNICE BAND. REFER TO EXTERIOR FINISH SCHEDULE.
31	WAINSCOT CAP. REFER TO EXTERIOR FINISH SCHEDULE & DETAIL 7/A7.2
32	DECORATIVE BAND BY SIGN COMPANY. MOUNTED ON THE WALL. SUPPLIED & INSTALLED BY G.C. REFER TO DECORATIVE BAND SCHEDULE.
33	PREFABRICATED AWNING C/W GLITTER BY SIGN COMPANY SUPPLIED & INSTALLED BY G.C. REFER TO AWNING SCHEDULE. G.C. TO SUPPLY SOLID WOOD BLOCKING AS REQUIRED.
34	ALUMINUM PANEL. REFER TO EXTERIOR WINDOW AND DOOR FRAME SCHEDULE ON SHEET A11.
35	EXTERIOR POP FRAME ITEM #201. SUPPLIED BY TDL GROUP AND INSTALLED BY G.C. REFER TO GRAPHIC SCHEDULE ON SHEET A2.1.
36	TPO ROOF MEMBRANE ON BACK OF PARAPET WALLS. REFER TO SPECIFICATIONS.

ALL DRAWINGS ARE THE PROPERTY OF THE ARCHITECT AND MUST BE RETURNED ON REQUEST.
THE CONTRACTOR SHALL CHECK ALL DIMENSIONS AND REPORT DISCREPANCIES TO THE ARCHITECT.
ALL DIMENSIONS ARE GIVEN IN MILLIMETRES UNLESS OTHERWISE INDICATED.
DO NOT SCALE DRAWINGS.

REVISIONS AND DISTRIBUTION LOG		
No.	Date	Note
1	DEC. 10, 2013	ISSUED FOR SITE PLAN APPROVAL
2	AUG. 15, 2014	RE-ISSUED FOR SITE PLAN APPROVAL
3	DEC. 09, 2014	REVISED ELEVATIONS

BASED ON INFORMATION PROVIDED BY THE TENANTS

247 Spadina Avenue, 4th Floor
Toronto, Ontario
M5T 3A8
www.smvarch.com
T 416.506.1600 F 416.506.0956



Project: 401 MARCH ROAD	
STARBANK GROUP OF COMPANIES	
401 MARCH ROAD	
OTTAWA-CARLETON ONTARIO	
Drawing Title: TIM HORTON'S ELEVATIONS	
Drawn By:	Project No. 13A102
Checked By:	Date Plotted: Dec 09, 2014 - 3:58pm
Date Checked:	Scale: AS SHOWN
Drawing No.:	Revision No.:

A4.4