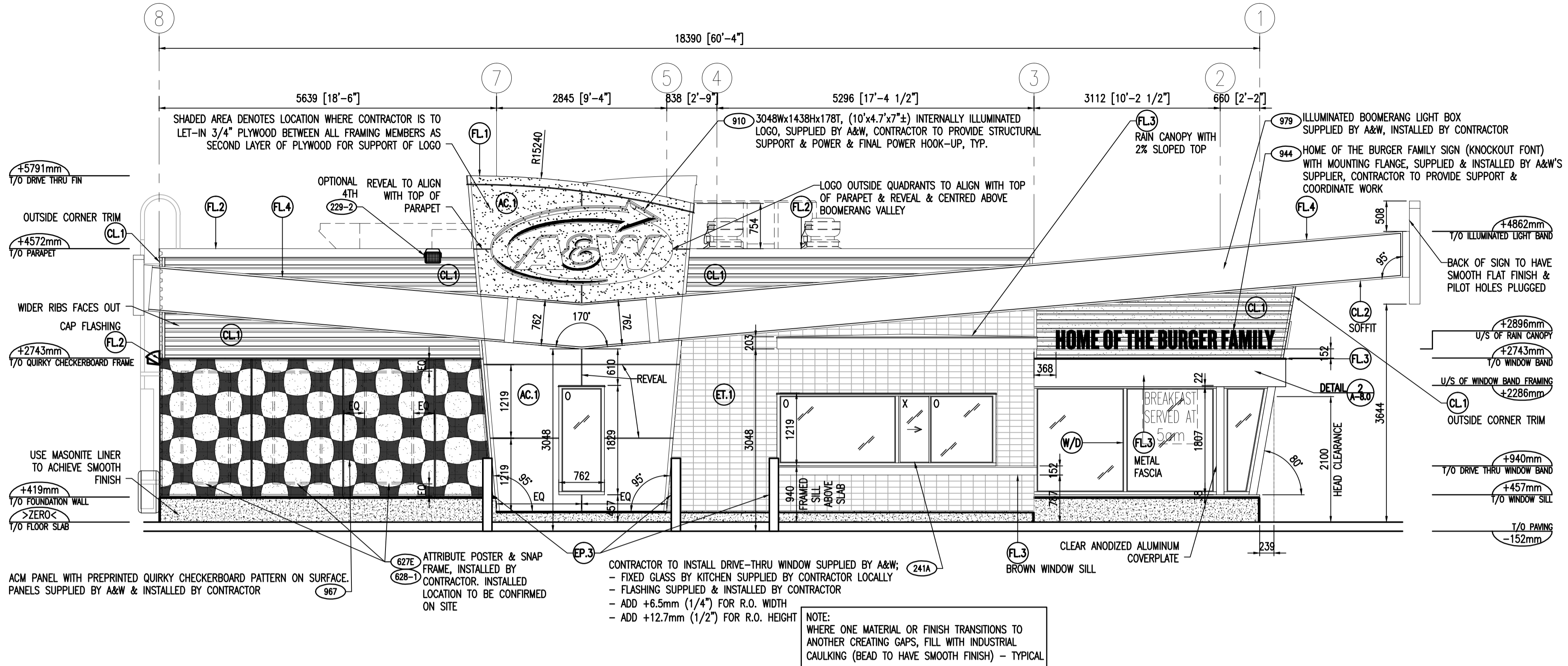


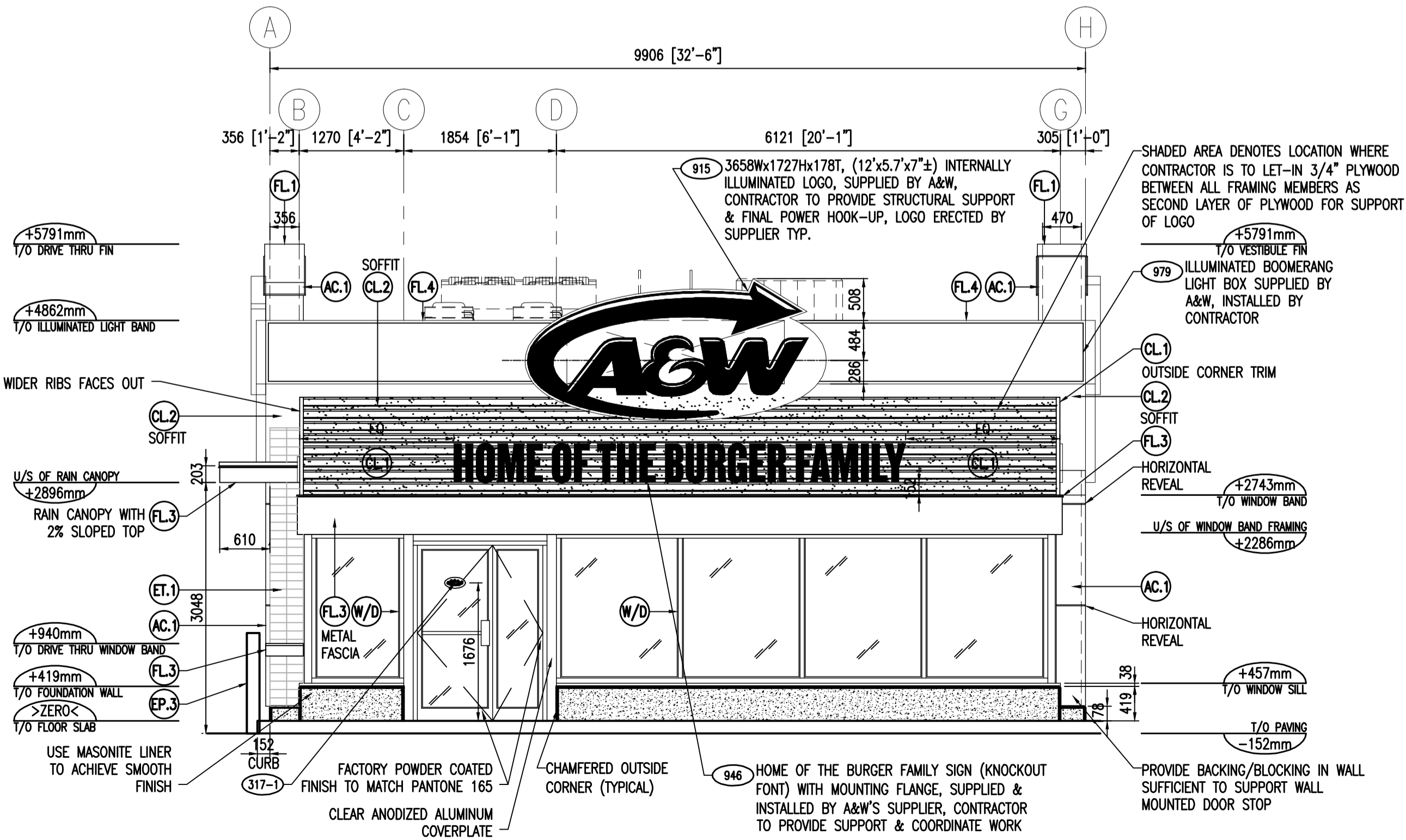
Images: 1. Con. Wash- Elev.jpg
5. 2013 Projects\13A\102 413 March Road, Ottawa\Design Drawings\Ultramar gas station\gas bar.dwg

XREF:

FILE NAME: \\PROJECT-SERVER\Projects\2013 Projects\13A\102 401 March Road, Ottawa - ON\Design Drawings\A&W Dec 8\13A\102 413 March Road - Plan & Elev.dwg



1 DRIVE THRU SIDE ELEVATION
A3.2 SCALE: 1:75



2 FRONT ELEVATION
A3.2 SCALE: 1:75

EXTERIOR FINISH SCHEDULE				
CODE	ITEM	FINISH	COLOUR (OR TYPE)	APPROVED ALTERNATE SPECIFICATION 1
AC.1	EXTERIOR WALL (FINS)	ALUMINUM COMPOSITE PANEL	TO MATCH AL13 TERRA BROWN CC020 (WD-311) OR SIMILAR (CONTRACTOR TO SUBMIT COLOUR SAMPLE FOR A&W APPROVAL IF SUBSTITUTION IS REQUIRED)	TO MATCH ALPOLIC JBR BRONZE 4mmFR4JBR3.5
ET.1	EXTERIOR WALL (DRIVE-THRU WINDOW)	EXTERIOR GRADE TILE EXTERIOR GRADE GROUT	TO MATCH DALITILE QH79 MANDARIN 4x8 TO MATCH FLEXITILE MANDARIN RED #102	
CL.1	EXTERIOR WALL (DEEP RIBBED PROFILE)	METAL CLADDING EXPOSED FASTENER	TO MATCH PROFILE = VICWEST CL602SSR VALSPAR WEATHER X CAMBRIDGE WHITE QC 16161	
CL.2	UNDERSIDE OF BOOMERANG (FLAT PROFILE SOFFIT)	METAL CLADDING HIDDEN FASTENER	TO MATCH PROFILE = VICWEST AD300 VALSPAR WEATHER X CAMBRIDGE WHITE QC 16161	
FL.1	FLASHING (FINS)	PREFINISHED SHEET METAL	TO MATCH ALPOLIC JBR BRONZE 4mmFR4JBR3.5	
FL.2	FLASHING (PARAPET)	PREFINISHED SHEET METAL	TO MATCH VALSPAR WEATHER X CAMBRIDGE WHITE QC 16161	
FL.3	FLASHING (WINDOW FASCIA BAND)	3mm WALL PLATE & PREFINISHED SHEET METAL	TO MATCH VICWEST COLORITE HMP METRO BROWN QC 16154	
FL.4	FLASHING (ILLUMINATED BOOMERANG)	PREFINISHED SHEET METAL	TO MATCH VICWEST VALSPAR WEATHER X ORANGE QC 16063	
EP.1	DELIBERATELY OMITTED			
EP.2	EXTERIOR SOLID DOORS & FRAMES, GARBAGE ENCLOSURE & DOOR, ROOF ACCESS LADDER	OIL BASE PAINT	TO MATCH BENJAMIN MOORE HC-71 HASBROUCK BROWN OR PANTONE 4695	
EP.3	BOLLARD	OIL BASE PAINT	TO MATCH BENJAMIN MOORE 2014-20 RUMBA ORANGE OR PANTONE 165	
W/D	DOUBLE GLAZED WINDOW & DOOR WITH ALUMINUM FRAME & FLASHING	NON-TINTED GLASS / CLEAR ANODIZED ALUMINUM	TO MATCH ALUMINEX 1140 SERIES INSULATED FLUSH GLAZED FRAMING SYSTEM WITH DOUBLE GLAZED SEALED UNITS (OR EQUAL)	
REMARK: ALL ALUMINUM COMPOSITE PANEL SYSTEM, CLADDING & PREFINISHED SHEETS SPECIFIED FROM AL 13 & VICWEST. FOLLOW SUPPLIER'S INSTALLATION INSTRUCTION. FOR MORE INFORMATION CONTACT:			TO MATCH ALPOLIC CONTACT: IAN YATES VICWEST PHONE: 1-250-979-8017 IYATES@VICWEST.COM	TO MATCH FIRESTONE UNA-CLAD CONTACT: BOB NIXON FIRESTONE METAL PRODUCTS CELL: 763-267-4039 OFFICE: 763-576-4443 TOLL FREE 1-800-426-7737 RNIXON@UNA-CLAD.COM
AL13 CONTACT: DON BLAIR PHONE: 1-778-668-6590 DON.BLAIR@AL13.CA	AL13 CONTACT: TORONTO OFFICE PHONE: 1-647-478-7726 TORONTO@AL13.CA	CL.1 CL.2	FL.1 FL.2 FL.3 FL.4	VICWEST CONTACT: IAN YATES VICWEST PHONE: 1-250-979-8017 IYATES@VICWEST.COM
AC.1	LONG LEAD TIME ITEM. CONTRACTOR SHALL PLACE ORDER IMMEDIATELY AFTER JOB IS AWARDED TO THEM			
FL.3	VERTICAL FACE TO BE CONSTRUCTED USING 3mm WALL PLATE PAINTED TO MATCH PANTONE 4695 / RAIN SCREEN ASSEMBLY C/W MATCHING FLASHING / CONTRACTOR TO SUBMIT SHOP DRAWING & COLOUR SAMPLE FOR A&W APPROVAL			

ALL DRAWINGS ARE THE PROPERTY OF THE ARCHITECT AND MUST BE RETURNED ON REQUEST.
THE CONTRACTOR SHALL CHECK ALL DIMENSIONS AND REPORT DISCREPANCIES TO THE ARCHITECT.
ALL DIMENSIONS ARE GIVEN IN MILLIMETRES UNLESS OTHERWISE INDICATED.
DO NOT SCALE DRAWINGS.

REVISIONS AND DISTRIBUTION LOG		
No.	Date	Note
1	DEC. 10, 2013	ISSUED FOR SITE PLAN APPROVAL
2	AUG. 15, 2013	RE-ISSUED FOR SITE PLAN APPROVAL
3	DEC. 08, 2014	RE-ISSUED FOR SITE PLAN APPROVAL

BASED ON INFORMATION PROVIDED BY THE TENANTS

247 Spadina Avenue, 4th Floor
Toronto, Ontario
M5T 3A8
www.smwarch.com
T 416.506.1600 F 416.506.0956



Project:
401 MARCH ROAD

STARBANK GROUP OF COMPANIES

401 MARCH ROAD

OTTAWA-CARLETON ONTARIO

Drawing Title:
A&W RESTAURANT ELEVATIONS

Drawn By:	Checked By:	Date Checked:	Project No.
			13A102
Date Plotted:			Scale:
Dec 09, 2014 - 10:37am			AS SHOWN
Drawing No.:			Revision No.:

A3.2