

TERRY FOX DRIVE

PART 19
PLAN 4R-24452

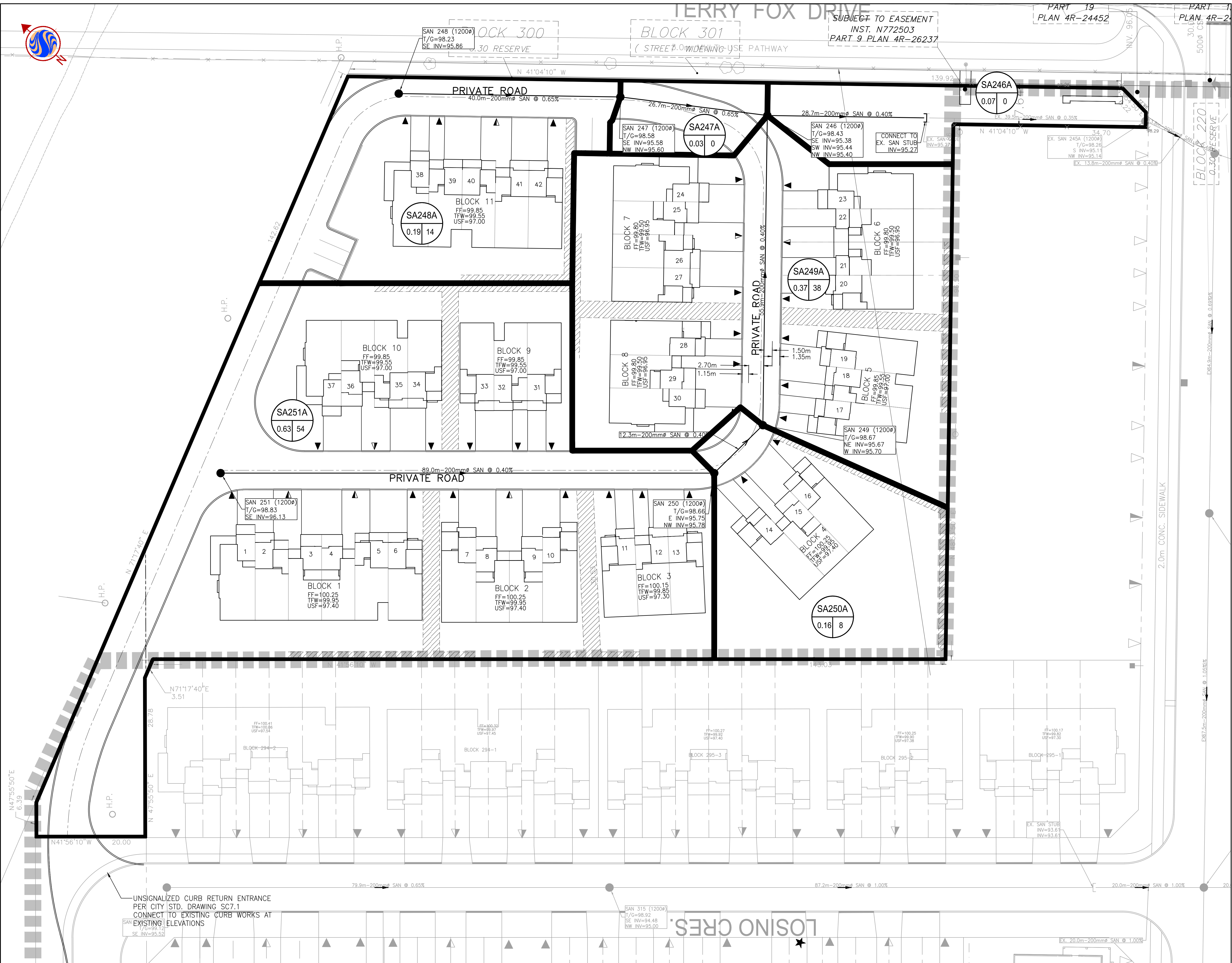
PART 20
PLAN 4R-24452

SUBJECT TO EASEMENT
INST. N772503
PART 9 PLAN 4R-26237

BLOCK 300
30 RESERVE

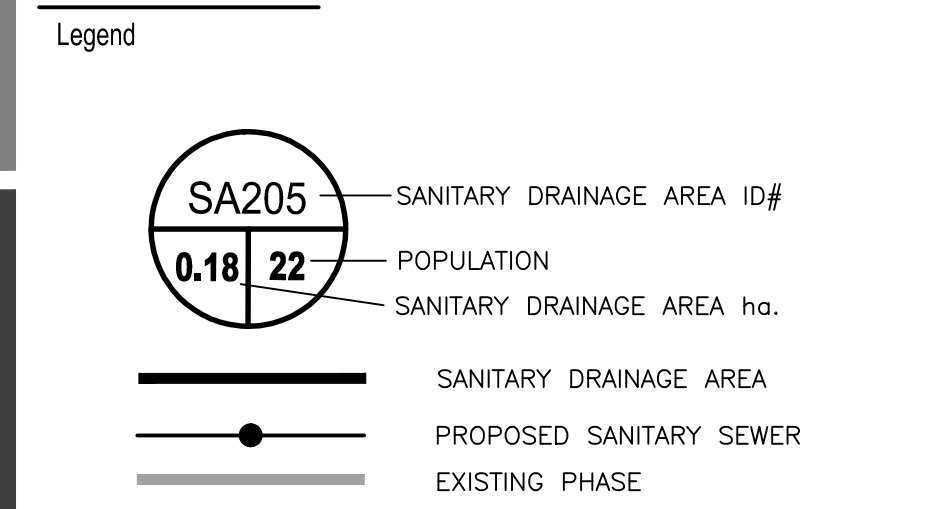
BLOCK 301
(STREET BOUNDARY USE PATHWAY)

BLOCK 220
0.30 RESERVE



Stantec Consulting Ltd.
1331 Clyde Avenue
Ottawa ON Canada
K2C 3G4
Tel. 613.722.4420
Fax. 613.722.2799
www.stantec.com

Copyright Reserved
The Contractor shall verify and be responsible for all dimensions. DO NOT scale the drawing - any errors or omissions shall be reported to Stantec without delay.
The Copyrights to all designs and drawings are the property of Stantec. Reproduction or use for any purpose other than that authorized by Stantec is forbidden.



Notes

1	ISSUED FOR SITE PLAN APPROVAL	DT	DT	13.10.15
Revision		By	Appd.	YY.MM.DD
File Name:	160401009-DB BLK 296	DT	PM	DT
		Dwn.	Chkd.	Dsgn.
				13.08.18
				YY.MM.DD

Permit-Seal

Client/Project
2129786 ONTARIO INC.

BLACKSTONE COMMUNITY
BLOCK 296
Ottawa ON Canada

Title
SANITARY DRAINAGE PLAN

Project No.
160401009

Scale
1:300

Drawing No.
SA-1

Sheet
5 of 5

Revision
1

W:\projects\160401009-Blackstone Community Phase 2-1\Design\Drawing\Block 296 Monarch\160401009 DB BLK 296.dwg
20/10/15 4:49 PM By: Mifanul Dastan

ORIGINAL SHEET - 24x36"