

Stantec Consulting Ltd.
1331 Clyde Avenue
Ottawa ON Canada
K2C 3G4
Tel. 613.722.4420
Fax. 613.722.2799
www.stantec.com

Copyright Reserved

The Contractor shall verify and be responsible for all dimensions. DO NOT scale the drawing - any errors or omissions shall be reported to Stantec without delay.
The Copyrights to all designs and drawings are the property of Stantec. Reproduction or use for any purpose other than that authorized by Stantec is forbidden.

Legend

- ORIGINAL GROUND
- PROPOSED ELEVATION
- DIRECTION & PERCENT FLOW
- PROPOSED LOT CORNER ELEVATION
- EXISTING ELEVATION AT LOT CORNER
- FINISHED FIRST FLOOR ELEVATION
- TOP OF FOUNDATION WALL UNDER SIDE OF FOOTING
- NUMBER OF RISERS
- ENGINEERED FILL REQUIRED
- TERRACING 3:1 SLOPE MINIMUM (UNLESS OTHERWISE SHOWN)
- PROPOSED SWALE
- PROPOSED SANITARY SEWER MANHOLES
- PROPOSED STORM SEWER MANHOLES
- PROPOSED FIRE HYDRANT
- PROPOSED VALVE BOX
- PROPOSED VALVE CHAMBER
- PROPOSED CATCH BASIN
- PROPOSED DOUBLE CATCH BASIN
- PROPOSED SUB DRAIN CATCH BASIN
- DIRECTION OF OVERLAND FLOW
- CATCHBASIN TO BE INSTALLED WITH IPEx TYPE "A" INLET CONTROL DEVICE.
- CATCHBASIN TO BE INSTALLED WITH IPEx TYPE "B" INLET CONTROL DEVICE.
- CATCHBASIN TO BE INSTALLED WITH IPEx TYPE "C" INLET CONTROL DEVICE.
- CATCHBASIN TO BE INSTALLED WITH IPEx TYPE "D" INLET CONTROL DEVICE.
- CATCHBASIN TO BE INSTALLED WITH IPEx TYPE "F" INLET CONTROL DEVICE.
- CATCHBASIN TO BE INSTALLED WITH 200mm Ø ORIFICE PLATE
- CATCHBASIN TO BE INTERCONNECTED
- PROPOSED DEPRESSED CURB LOCATIONS

Notes

2	REVISED PER CITY COMMENTS	DT	DT	15.09.15
1	ISSUED FOR SITE PLAN APPROVAL	DT	DT	13.10.15
Revision		By	Appd.	YY.MM.DD

File Name:	160401009-DB BLK 296	DT	PM	DT	13.08.18
		Dwn.	Chkd.	Dsgn.	YY.MM.DD

Permit-Seal

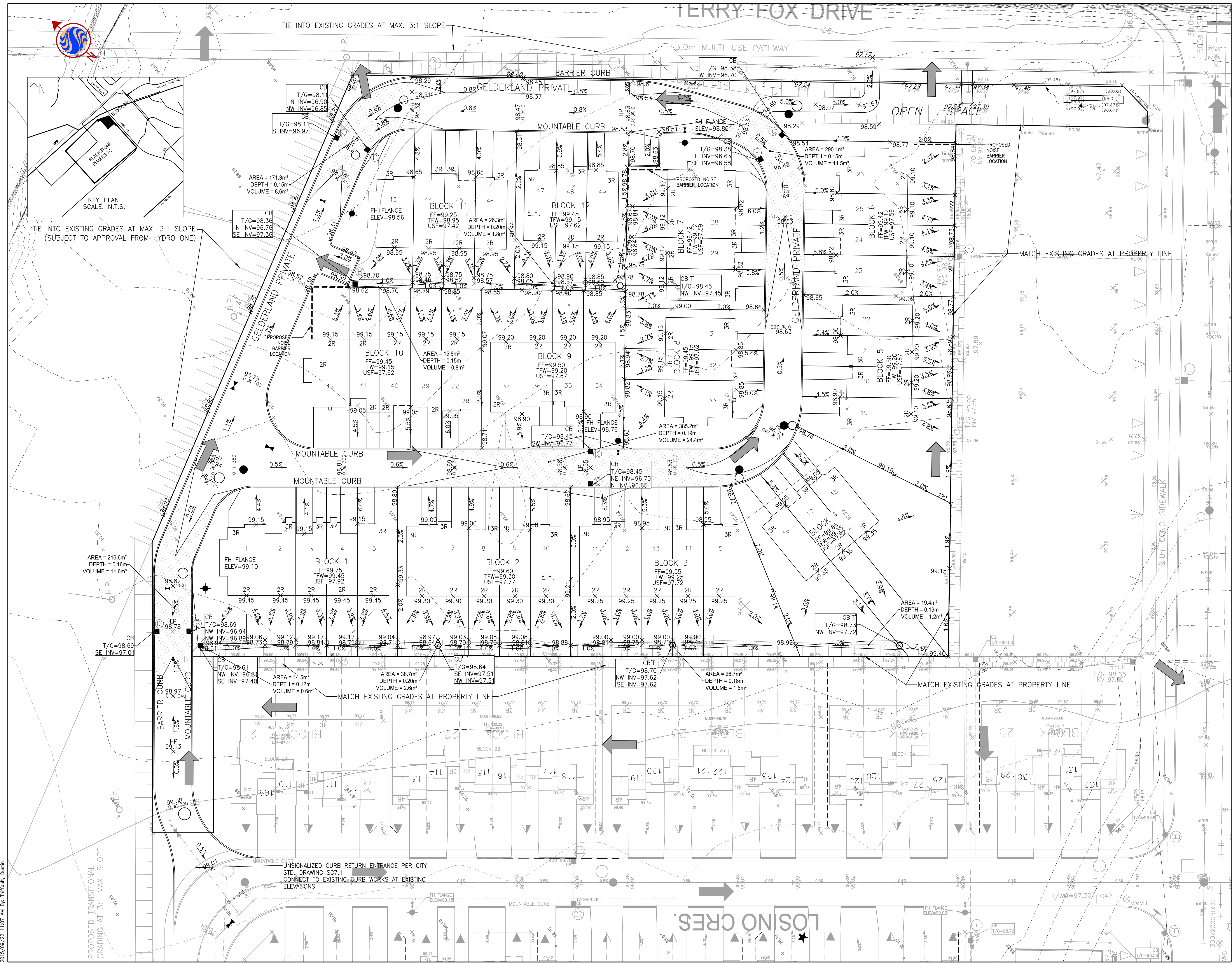
Client/Project
2129786 ONTARIO INC.

BLACKSTONE COMMUNITY
BLOCK 296
Ottawa ON Canada

Title
GRADING PLAN

Project No.	160401009	Scale	1:300
Drawing No.	GP-1	Sheet	2 of 5

Revision
2



W:\Projects\160401009_Blackstone Community Phase 2-1\Design\Drawing\Block 296 Monarch\160401009 DB BLK 296.dwg
2018/09/22 11:07 AM By: T.Hoffm. Dstn