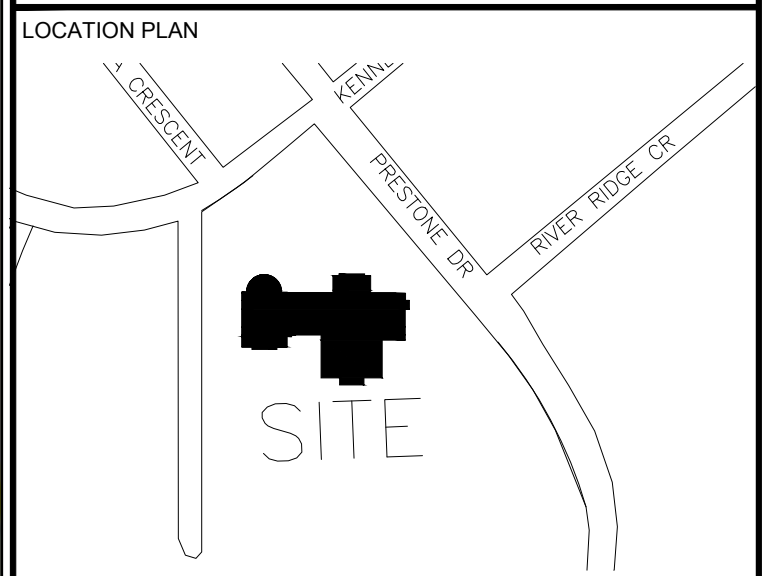


CLIENT:
 ST. HELEN'S ANGLICAN CHURCH
 1234 PRESTONE DRIVE K1E 3X6
 CUMBERLAND, ONTARIO



CONSULTANTS
 ARCHITECTS:
Vandenberg & Wildeboer
 A · R · C · H · I · T · E · C · T · S
www.vandenberg-wildeboer.com Telephone: 613.271.8144 Facsimile: 613.271.8609 mail@vandenberg-wildeboer.com
 THE OLD STONE LODGE • 100 HAMBURG ROAD • CUMBERLAND, ONTARIO • K1E 3H9

SURVEYORS:
ANNIS, O'SULLIVAN, VOLLEBEK LTD.
14 Concourse Gate, Suite 500
 Niagara Falls, ON L2E 1G8
 Phone: (613) 721-0500 Fax: (613) 721-1079
 Email: info@annis-osullivan.com
 Job No. 13-10-1000

LEGEND
 PROPOSED 1.8m HT. CONIFEROUS TREE

No.	Issue	Date	DR	CK
1	ISSUED FOR SITE PLAN APPROVAL	14/02/2014	ML	JL

JAMES B. LENNOX & ASSOCIATES INC.
 LANDSCAPE ARCHITECTS
SUITE 200A HAMPSON PARK PLAZA, 1419 CARLING AVE. OTTAWA, ONTARIO K2E 7G8
 Tel. (613) 722-5168 Fax. (613) 722-5168

PROJECT
 ST. HELEN'S ANGLICAN CHURCH
 1234 PRESTONE DRIVE, CUMBERLAND ONTARIO

DRAWING
 PROPOSED TREE COMPENSATION
 PLANTINGS FOR 370 KENNEDY LANE EAST

STAMP

 SCALE
 1 : 300
 START DATE
 AUGUST 2013
 PROJECT NO.
 13-RVB-1363

PROJECT NORTH

 DRAWING NO.
SK.1
 PLOT SIZE ARCH-D