

I REQUIRE THIS PLAN TO BE DEPOSITED UNDER THE LAND TITLES ACT.

_____, 2013

BRIAN J. WEBSTER
ONTARIO LAND SURVEYOR

PLAN 4R- _____

RECEIVED AND DEPOSITED

DATE: _____

REPRESENTATIVE FOR THE LAND REGISTRAR FOR THE LAND TITLES DIVISION OF OTTAWA-CARLETON NO. 4.

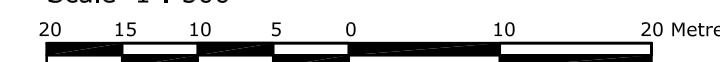
SCHEDULE

PART	LOT	CONCESSION	PIN
1	PART 35	1 (RIDEAU FRONT)	PART 04691-0257

PART 1 IS SUBJECT TO EASEMENTS PER INST. NO.'S LT346800, LT345126, LT1271136 AND OC439159.

DRAFT PLAN OF SURVEY of
PART OF LOT 35
CONCESSION 1 (RIDEAU FRONT)
GEOGRAPHIC TOWNSHIP OF NEPEAN
CITY OF OTTAWA
Stantec Geomatics Ltd.

Scale 1 : 500



METRIC CONVERSION

DISTANCES AND COORDINATES SHOWN ON THIS PLAN ARE IN METRES AND CAN BE CONVERTED TO FEET BY DIVIDING BY 0.3048

GRID SCALE CONVERSION

DISTANCES ARE GROUND AND CAN BE CONVERTED TO GRID BY MULTIPLYING BY THE COMBINED SCALE FACTOR OF 0.99996.

BEARING NOTE

BEARINGS HEREON ARE GRID BEARINGS DERIVED FROM THE CAN-NET VRS NETWORK AND ARE REFERRED TO THE CENTRAL MERIDIAN 76° 30' WEST LONGITUDE OF THE 3° MTM ONTARIO COORDINATE SYSTEM, NAD83 (ORIGINAL) ZONE 9.

FOR BEARING COMPARISONS, A ROTATION OF 0° 32' 10" COUNTER CLOCKWISE HAS BEEN APPLIED TO BEARINGS ON PLAN 4R-19558.

OBSERVED REFERENCE POINTS DERIVED FROM GPS OBSERVATIONS USING THE CAN-NET VIRTUAL REFERENCE STATION NETWORK:
MTM ZONE 9, NAD83 (ORIGINAL)(CSRS)(1997.0).
COORDINATES TO URBAN ACCURACY PER SEC 14(2) OF O.REG. 216/10

POINT ID	NORTHING	EASTING
(A)	5024069.95	363132.53
(B)	5024150.83	363214.24

COORDINATES CANNOT, IN THEMSELVES, BE USED TO RE-ESTABLISH CORNERS OR BOUNDARIES SHOWN ON THIS PLAN.

SURVEYOR'S CERTIFICATE

I CERTIFY THAT :

- THIS SURVEY AND PLAN ARE CORRECT AND IN ACCORDANCE WITH THE SURVEYS ACT, THE SURVEYORS ACT AND THE LAND TITLES ACT AND THE REGULATIONS MADE UNDER THEM.
- THE SURVEY WAS COMPLETED ON THE 18th DAY OF OCTOBER, 2013.

DATE

BRIAN J. WEBSTER
ONTARIO LAND SURVEYOR

LEGEND

Symbol	Denotes	Found Monuments
■	"	FOUND MONUMENTS
□	"	SET MONUMENTS
IB	"	IRON BAR
IBØ	"	ROUND IRON BAR
SIB	"	STANDARD IRON BAR
SSIB	"	SHORT STANDARD IRON BAR
CC	"	CUT CROSS
CP	"	CONCRETE PIN
NW	"	NAIL & WASHER
WIT	"	WITNESS
PIN	"	PROPERTY IDENTIFICATION NUMBER
MEAS	"	MEASURED
PROP	"	PROPORTIONED
OU	"	ORIGIN UNKNOWN
SG	"	STANTEC GEOMATICS LTD.
P	"	PLAN 4R-19558



Stantec Geomatics Ltd.

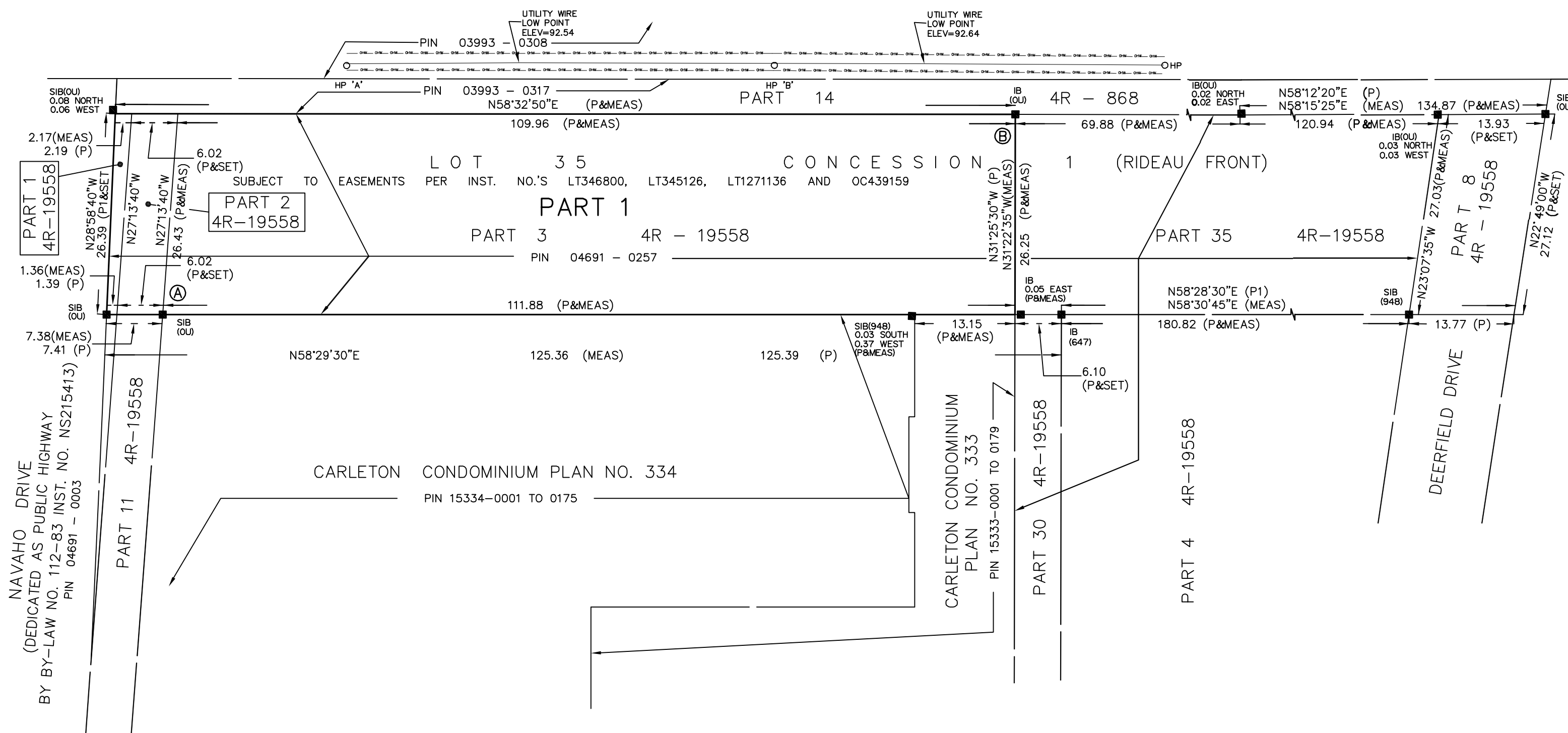
Ontario Land Surveyors
Canada Lands Surveyors
1331 CLYDE AVENUE, SUITE 400, OTTAWA, ON. K2C 3G4
PHONE (613)722-4420 FAX (613)722-2799

DRAWN BY:CEC CHECKED BY:BL PM: FP FIELD:CA PROJECT No.: 161613070-111

DRAWING: 161613070-111_1800 Baseline-D1.dwg

BASELINE ROAD

ROAD ALLOWANCE BETWEEN CONCESSION 2 (OTTAWA FRONT) AND CONCESSION 1 (RIDEAU FRONT)



W:\active\161613070_minto_1800 baseline rd_topographical\dd\dwg\161613070-111_1800 Baseline-D1.dwg