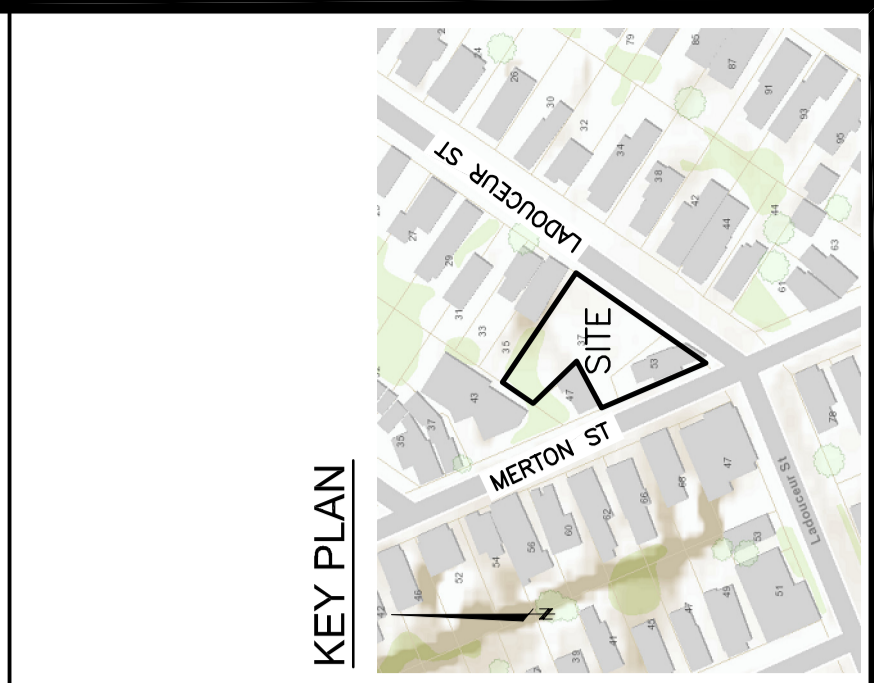


DRAWING LEGEND	
CB	CATCH BASIN
MH	MANHOLE
CB/MH	CATCH BASIN/MANHOLE
RD	ROOF DRAIN
WS/W	WATER SERVICE / WATERMAIN
SAN	SANITARY SEWER
ST	STORM SEWER
CS	CURB STOP & STANDARD
VB	VALVE AND VALVE BOX
PH	FIRE HYDRANT
W	WATER METER
UP	REMOTE WATER METER READOUT
UPO	UTILITY POLE
+	EXISTING GRADE ELEVATION
+ 93.79	PROPOSED GRADE ELEVATION
0.35	EXISTING SLOPE OF GRADE
0.35	SLOPE OF GRADE
- - -	SMALL DITCH (CENTERLINE)
- - -	PROPERTY LINE
FFL	FIRST FLOOR ELEVATION
TOF	TOP OF FOUNDATION ELEVATION
BFL	BASEMENT FLOOR ELEVATION
USF	UNDERSIDE OF FOOTING ELEVATION



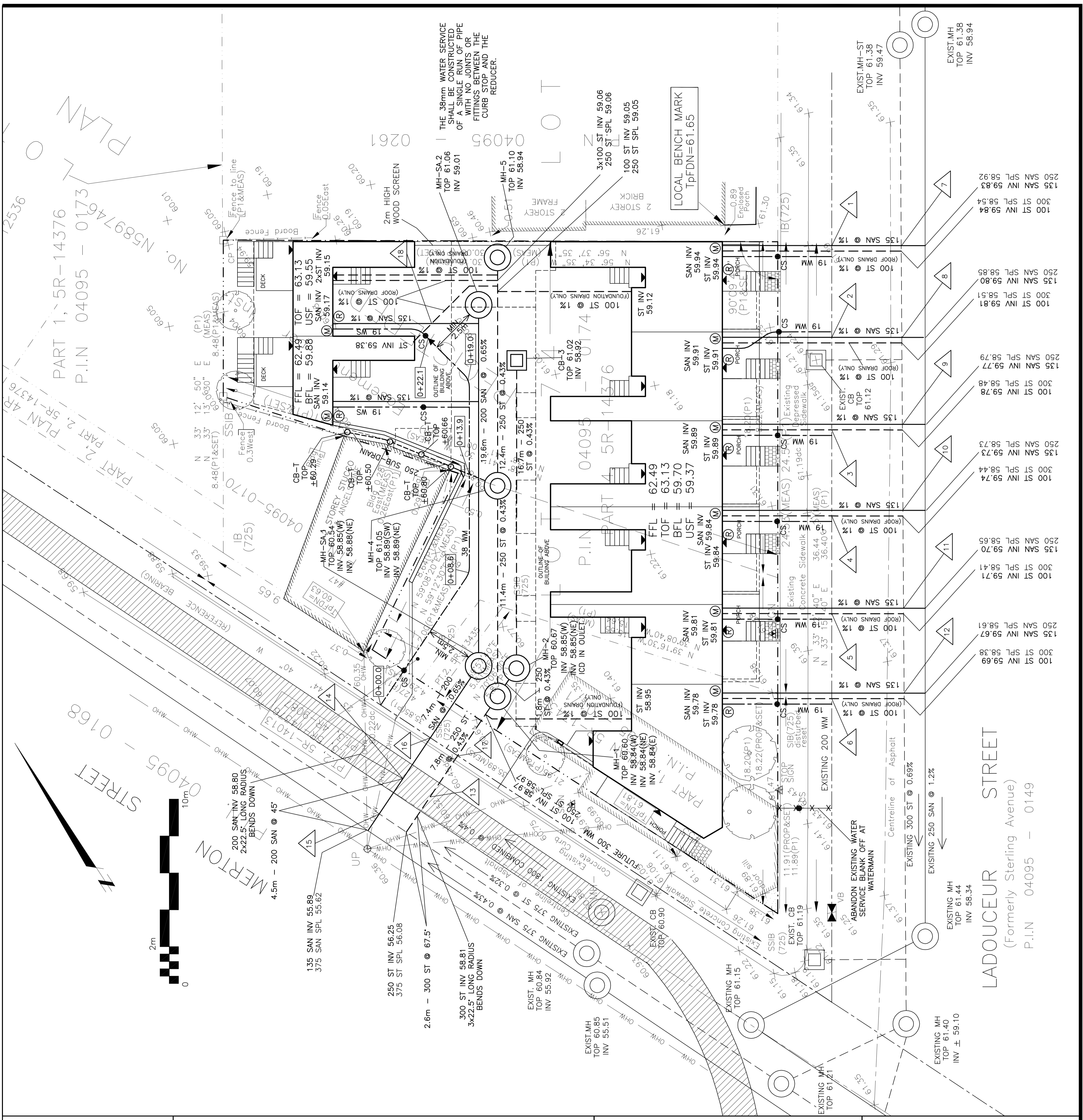
No.	Date	REVISION
3	OCT 17-13	SERVICING FROM MERTON ST REVISED
2	AUG 16-13	ISSUED FOR APPROVAL
1	JUL 31-13	ISSUED FOR CLIENT REVIEW

D. B. GRAY ENGINEERING INC.
 700 Long Point Circle
 Ottawa, Ontario K1T 4E9
 Tel: 613-425-9044
 dgray@dbgray.com

PROPOSED TOWNHOUSES
 LADOUCEUR ST & MERTON ST
 OTTAWA, ONTARIO

SITE SERVICING PLAN

D.B.G.
 1:100
 JUL 31-13
 13029
SG-1
 of 3



STATION	DESCRIPTION	CLEARANCE	MINIMUM CLEARANCE REQUIRED
1-1	100 ST INV 59.88 250 WM TOP 59.80	860mm	300mm
2-1	100 ST INV 59.85 250 WM TOP 59.82	830mm	300mm
3-1	100 ST INV 59.83 250 WM TOP 59.80	790mm	300mm
4-1	135 SAN INV 59.78 300 ST TOP 59.78	720mm	300mm
5-1	135 SAN INV 59.75 300 ST TOP 59.75	660mm	300mm
6-1	100 ST INV 59.72 250 WM TOP 59.10	620mm	300mm
7-1	135 SAN INV 59.84 300 ST TOP 59.84	150mm	150mm
8-1	135 SAN INV 59.81 300 ST TOP 59.81	150mm	150mm
9-1	135 SAN INV 59.78 300 ST TOP 59.78	150mm	150mm
10-1	135 SAN INV 59.75 300 ST TOP 59.75	150mm	150mm
11-1	135 SAN INV 59.72 300 ST TOP 59.72	150mm	150mm
12-1	135 SAN INV 59.69 300 ST TOP 59.69	150mm	150mm
13-1	135 SAN INV 59.66 300 ST TOP 59.66	150mm	150mm
14-1	135 SAN INV 59.63 300 ST TOP 59.63	150mm	150mm
15-1	135 SAN INV 59.60 300 ST TOP 59.60	150mm	150mm
16-1	135 SAN INV 59.57 300 ST TOP 59.57	150mm	150mm
17-1	135 SAN INV 59.54 300 ST TOP 59.54	150mm	150mm
18-1	135 SAN INV 59.51 300 ST TOP 59.51	150mm	150mm

REF	TOP	SIZE	TYPE	INVERT AT INLET	INVERT AT OUTLET	NOTES
MH-1	60.60	1200mm	PRE-CAST CONCRETE MANHOLE	58.84(N)	58.84(W)	TO OPSD 705.010 & CITY OF OTTAWA STANDARDS
MH-2	60.67	1200mm	PRE-CAST CONCRETE MANHOLE	58.85(N)	58.85(W)	TO OPSD 705.010 & CITY OF OTTAWA STANDARDS
CB-3	61.02	600 x 600mm	PRE-CAST CONCRETE CATCH BASIN	-	58.92	TO OPSD 705.010 & CITY OF OTTAWA STANDARDS
MH-4	61.05	1200mm	PRE-CAST CONCRETE MANHOLE	58.86(N)	58.86(W)	TO OPSD 705.010 & CITY OF OTTAWA STANDARDS
MH-5	61.10	1200mm	PRE-CAST CONCRETE MANHOLE	-	58.94	TO OPSD 705.010 & CITY OF OTTAWA STANDARDS
MH-SA-1	60.52	1200mm	PRE-CAST CONCRETE MANHOLE	58.86(N)	58.86(W)	TO OPSD 705.010 & CITY OF OTTAWA STANDARDS
MH-SA-2	61.05	1200mm	PRE-CAST CONCRETE MANHOLE	58.05(N)	58.89(W)	TO OPSD 705.010 & CITY OF OTTAWA STANDARDS

STATION	DESCRIPTION	GRADE ELEV.	TOP OF PIPE	DEPTH OF COVER	COMMENTS
0+00.0	CONNECTION TO EXISTING 300mm WATERMAIN	60.32	60.05	27.27	-
0+02.3	38mm COPPER B88 TYPE K SOFT	60.37	57.97	2.40	ON PROPERTY LINE
0+06.6	-	60.74	58.34	2.40	-
0+13.9	-	61.04	58.64	2.40	CONFORMANCE WITH 300mm WATERMAIN (MIN. 300mm REQUIRED)
0+19.0	-	61.06	58.64	2.42	-
0+22.1	38mm x 19mm REDUCER TO CITY OF OTTAWA STANDARDS	61.10	58.64	2.46	-