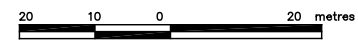


TOPOGRAPHICAL PLAN OF
**PART OF LOT 12
 CONCESSION 2 (Ottawa Front)**
 Township Of Nepean
 NOW CITY OF NEPEAN

REGIONAL MUNICIPALITY OF
 OTTAWA - CARLETON

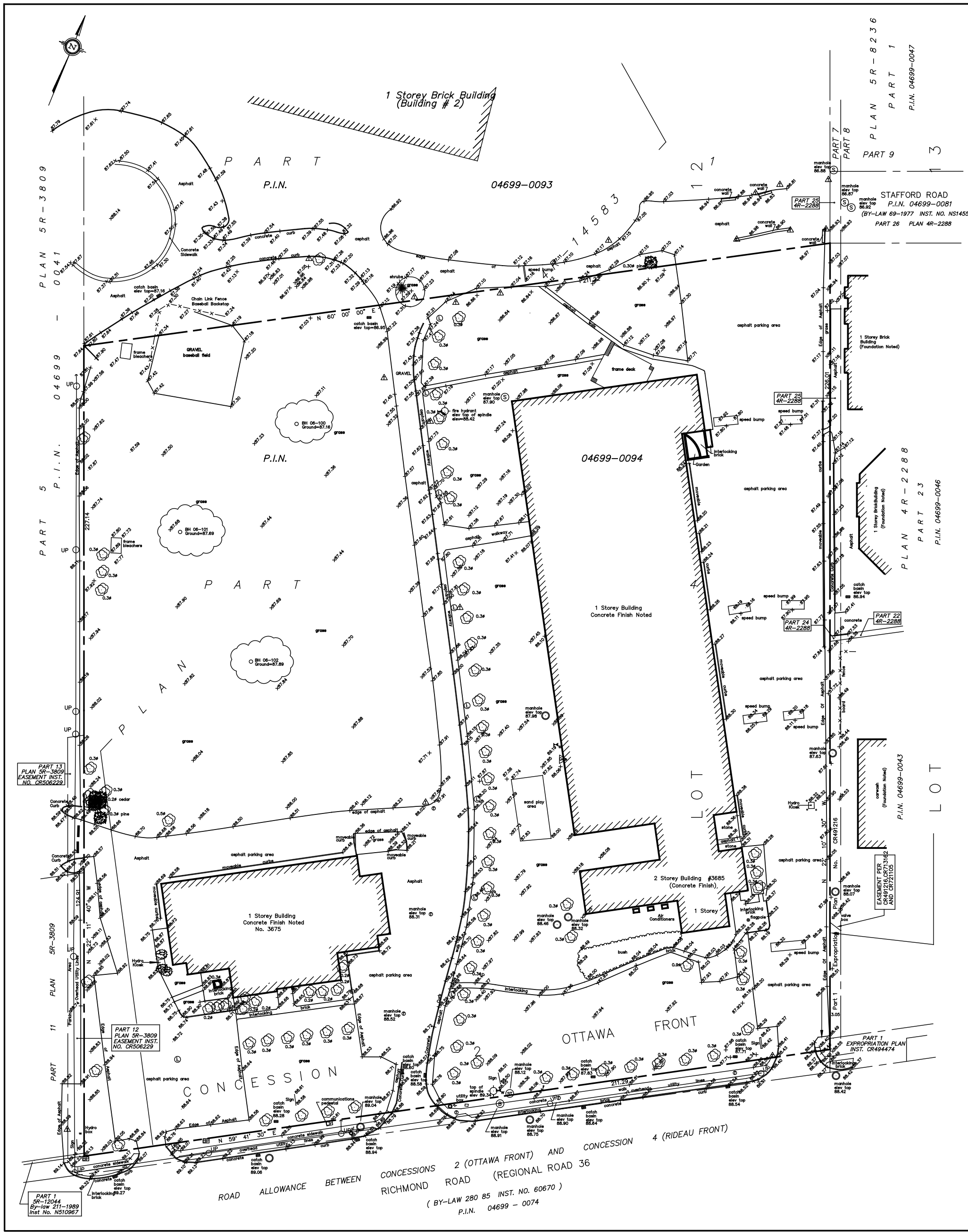
SCALE 1 : 500



METRIC: Distances shown on this plan are in metres and can be converted to feet by dividing by 0.3048.

Prepared by Annis, O'Sullivan, Vollebek Ltd.

BOREHOLE LOCATIONS ADDED MARCH 28, 2006.



NOTES AND LEGEND

- ELEVATIONS ARE REFERRED TO GEODETIC DATUM.
- DENOTES LAMP POST
 - BOLLARD
 - DEODUCOUS TREE
 - SIGN
 - MAINTENANCE HOLE (STORM SEWER)
 - MAINTENANCE HOLE (SANITARY)
 - MAINTENANCE HOLE (HYDRO)
 - MAINTENANCE HOLE (GAS)
 - MAINTENANCE HOLE (WATER VALVE)
 - MAINTENANCE HOLE (BELL TELEPHONE)
 - MAINTENANCE HOLE (TRAFFIC)
 - TRAFFIC SIGN
 - WATER VALVE
 - CATCH BASIN
 - FIRE HYDRANT
 - CONIFEROUS TREE
 - GUY WIRE
 - TRAFFIC LIGHT
 - LOCATION OF ELEVATIONS
 - BELL PEDESTAL
 - UTILITY POLE

UTILITY INFORMATION WAS VERIFIED IN THE FIELD WHERE POSSIBLE. INDIVIDUAL UTILITY COMPANIES SHOULD BE CONTACTED FOR CONFIRMATION OF EXISTENCE AND LOCATION OF THE UTILITIES.

BOUNDARY INFORMATION SHOWN HEREON HAS BEEN COMPILED FROM FIELD SURVEY AND EXISTING REFERENCE PLANS.

TREE DIAMETERS SHOWN INDICATE APPROXIMATE TRUNK SIZE, AND DO NOT REFLECT CANOPY COVERAGE.

FROM THE OFFICE OF
ANNIS, O'SULLIVAN VOLLEBEK LTD.
 ONTARIO LAND SURVEYORS
 NEPEAN (OTTAWA) ONTARIO