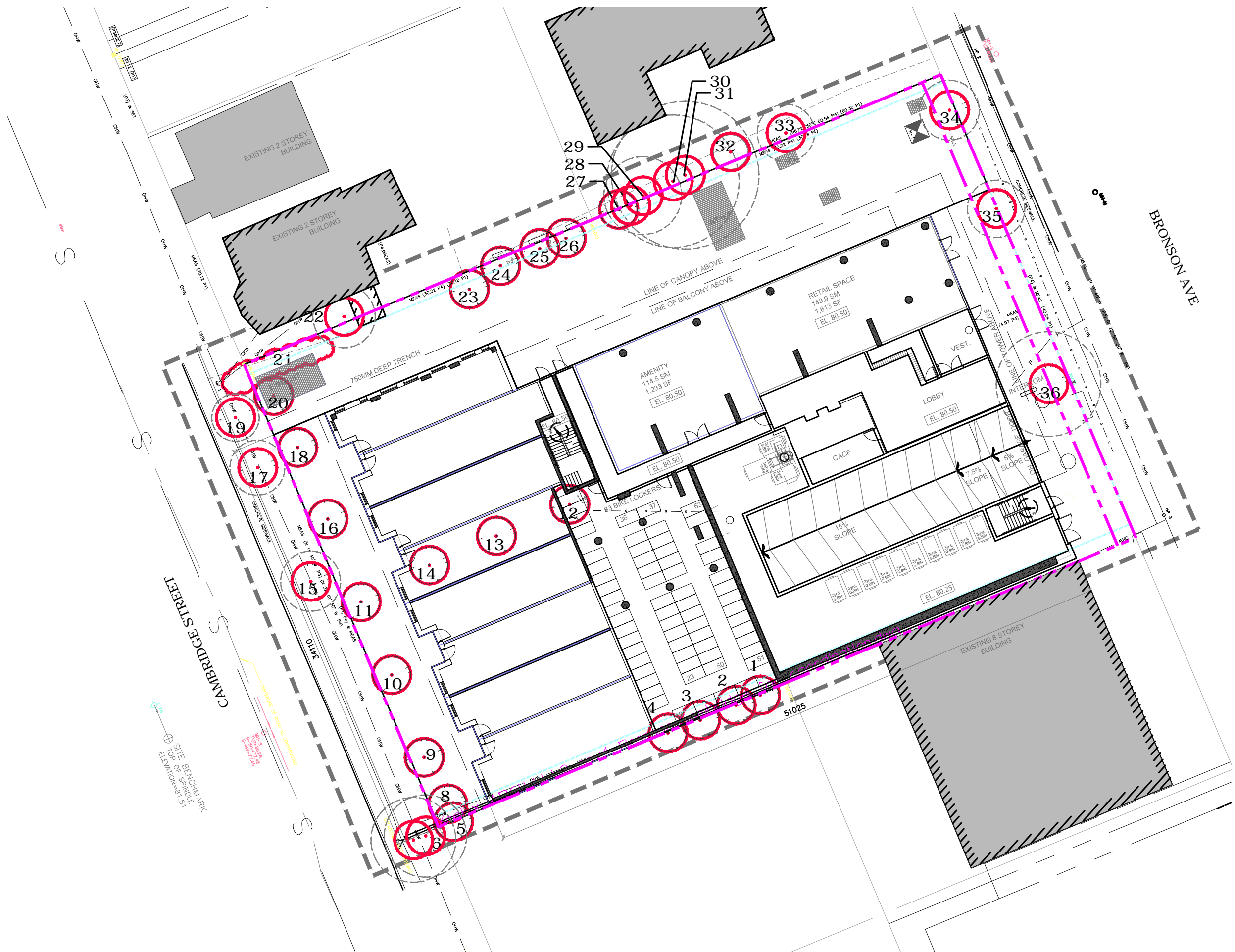
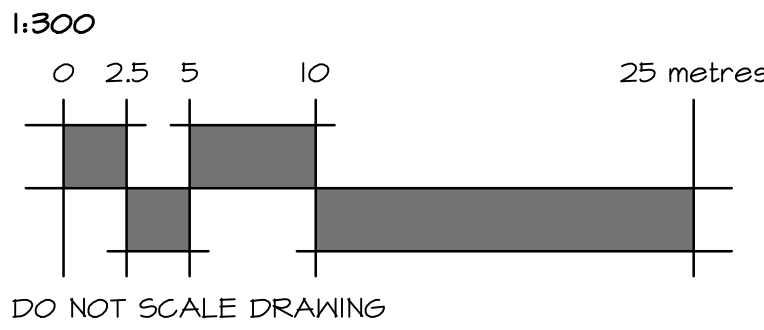




1 CURRENT VEGETATION
TC1 1:300



2 PROPOSED DEVELOPMENT AND CONSERVED VEGETATION
TC1 1:300



NOTES:
DO NOT SCALE DRAWINGS;
f.d. fountain landscape architecture IS NOT RESPONSIBLE FOR ACCURACY OF BASE INFORMATION;
THIS PLAN TO BE READ IN CONJUNCTION WITH TREE CONSERVATION REPORT - 192, 196 BRONSON AVE AND 31 CAMBRIDGE STREET, PREPARED BY IFS ASSOCIATES, MAY 27, 2013. REFER TO TCR FOR FURTHER INFORMATION ABOUT EXISTING VEGETATION;
TREE SURVEY CONDUCTED BY IFS ASSOCIATES, MAY, 2013;
REFER TO CIVIL ENGINEERING DRAWINGS FOR GRADING & SITE SERVING INFORMATION;
THE CONTRACTOR IS RESPONSIBLE FOR CONFIRMING SITE CONDITIONS AND REPORTING ANY DISCREPANCIES TO THE LANDSCAPE ARCHITECT;
PERFORM WORK IN ACCORDANCE WITH DETAILS AND SPECIFICATIONS;
REFER TO LANDSCAPE PLANS FOR PROPOSED WORKS

TABLE 1: TREE INVENTORY					
NO.	SPECIES	D.B.H.* (cm)	CONDITION	TREATMENT**	CRZ***
1	Manitoba Maple (Acer negundo)	26	Very poor	To be removed	N/A
2	Manitoba Maple	24	Poor	To be removed	N/A
3	Manitoba Maple	28/25.	Fair/Poor	To be removed	N/A
4	Manitoba Maple	28	Very poor	To be removed	N/A
5	Manitoba Maple	27	Fair	To be removed	N/A
6	Manitoba Maple	33	Poor	On City property; CRZ within proposed parking excavation; To be removed	N/A
7	Manitoba Maple	34	Fair	On City property; CRZ within proposed parking excavation; To be removed	N/A
8	Norway Maple (Acer platanoides)	9	Fair	Juvenile tree; to be removed/transplanted	N/A
9	Norway Maple	7	Good	Juvenile tree; to be removed/transplanted	N/A
10	Norway Maple	16	Good	Maturing tree; to be removed/transplanted	N/A
11	Norway Maple	13	Good	Maturing tree; to be removed/transplanted	N/A
12	Norway Maple	11	Good	Juvenile tree; to be removed/transplanted	N/A
13	Norway Maple	11	Good	Juvenile tree; to be removed/transplanted	N/A
14	Norway Maple	11	Good	Juvenile tree; to be removed/transplanted	N/A
15	Norway Maple	24	Poor	On City property; heavily pruned by Hydro; CRZ within proposed parking excavation; to be removed	N/A
16	Norway Maple	10	Fair	Juvenile tree; main stem vandalized; to be removed	N/A
17	Norway Maple	22	Poor	On City property; heavily pruned by Hydro; CRZ within proposed parking excavation; to be removed	N/A
18	Norway Maple	9	Poor	Juvenile tree; main stem vandalized; to be removed	N/A
19	Norway Maple	19	Poor	On City property; heavily pruned by Hydro; CRZ within proposed parking excavation; to be removed	N/A
20	Norway Maple	10	Very Poor	Juvenile tree; main stem vandalized; to be removed	N/A
21	White Cedar (Thuja occidentalis)	5 avg.	Fair	Maturing hedge/to be removed	N/A
22	Siberian elm (Ulmus pumila)	25	Good	On neighbouring private property. Roots to be impacted by parking excavation; to be removed	N/A
23	Crab apple (Malus spp.)	33	Poor	In advanced decline; to be removed	N/A
24	Ash (Fraxinus spp.)	18	Fair	EAB infestation; to be removed	N/A
25	Little-leaf linden (Tilia cordata)	20	Good	To be removed	N/A
26	Ash	16	Fair	EAB infestation/to be removed	N/A
27	Siberian Elm	41	Fair	To be removed	N/A
28	Siberian Elm	40	Fair	To be removed	N/A
29	Siberian Elm	31	Fair	On neighbouring private property. Roots to be impacted by parking excavation; to be removed	N/A
30	Siberian Elm	53	Fair	On neighbouring private property. Roots to be impacted by parking excavation; to be removed	N/A
31	Siberian Elm	59	Fair	On neighbouring private property. Roots to be impacted by parking excavation; to be removed	N/A
32	Manitoba Maple	14 avg.	Poor	On neighbouring private property. Roots to be impacted by parking excavation; to be removed	N/A
33	Manitoba Maple	23	Good	On neighbouring private property. Roots to be impacted by parking excavation; to be removed	N/A
34	Norway Maple	24	Good	To be removed	N/A
35	Norway Maple	23	Fair	To be removed	N/A
36	Siberian Elm	42	Fair	Crown asymmetrical due to proximity of building; invasive, undesirable species/to be removed	N/A

* D.B.H.: INDICATES DIAMETER (cm) MEASUREMENT AT BREAST HEIGHT (1.3m ABOVE GRADE);
** TREATMENT: REFER TO REPORT BY IFS ASSOCIATES FOR MORE DETAILS ABOUT CONDITION;
***CRZ: INDICATES RADIUS OF CRITICAL ROOTING ZONE.
REFER TO RECOMMENDATIONS IN REPORT FOR TECHNIQUES TO PRESERVE TREES.

Copyright Reserved
The Copyrights to all designs and drawings are the property of f.d. fountain landscape architecture. Unauthorized reproduction or use is forbidden.

DO NOT SCALE DRAWING

owner / client:



LAMB DEVELOPMENT CORP

SYMBOLS LEGEND:

--- SCOPE OF STUDY

--- PROPERTY LINE

--- EXTANT OF PARKING EXCAVATION / FINISHED LIMIT OF UNDERGROUND PARKING

--- EXISTING TREES TO BE REMOVED OR TRANSPLANTED (SEE TABLE FOR TRANSPLANT CANDIDATES)

--- EXISTING COMMUNITY OF TREES TO BE REMOVED

8 EXISTING SHRUBS TO BE REMOVED

--- CRITICAL ROOTING ZONE (CRZ) OF TREES ON CITY OR PRIVATE PROPERTY- REFER TO TABLE 1 FOR RADIUS OF CRZ

--- EXISTING BUILDING FOOTPRINTS

PRELIMINARY
NOT FOR CONSTRUCTION

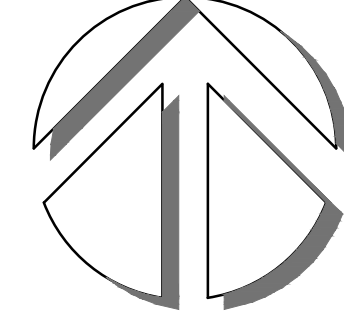
5	re-issued for site plan approval	06/03/2014	HM
4	issued for coordination	03/24/2014	HM
3	issued for site plan approval	09/12/2013	HM
2	issued for client review	05/30/2013	HM
1	issued for discussion	05/22/2013	HM
No.	Revision / description	mm/dd/yyyy	by

f.d. fountain
landscape architecture

1735 courtwood crescent, suite 3
ottawa, ontario
K2C 3J2 CANADA
t 613. 216. 2934
f 613. 216. 2938

www.fdfountain.com

north:



in association with:



seal:



seal:



project:

192 + 196 BRONSON /
31 CAMBRIDGE

drawing:

TREE CONSERVATION
PLAN

designed: DF/HM	drawn: HM	project no.: C 13-56
date: April 2013	scale: as noted	dwg. no.: TC1 of 1