

LOTS 13, 14 And 15
(East Side Russell Avenue)
REGISTERED PLAN 32846
CITY OF OTTAWA

Prepared by Annis, O'Sullivan, Vollebek Ltd.
Field Work Completed May 8, 2013

Scale 1 : 200



Metric

DISTANCES SHOWN ON THIS PLAN ARE IN METRES AND CAN BE CONVERTED TO FEET BY DIVIDING BY 0.3048

Date May 14/2013 *Edward M. Lancaster*
Edward M. Lancaster, O.L.S.

Notes & Legend

- MH-ST Denotes Maintenance Hole (Storm Sewer)
- MH-S " Maintenance Hole (Sanitary)
- MH " Maintenance Hole (Unidentified)
- UP " Utility Pole
- CB " Catch Basin
- T/G " Top of Grate
- GM " Gas Meter
- LS " Light Standard
- △ S " Sign
- " Deciduous Tree
- ★ " Coniferous Tree
- CLF " Chain Link Fence
- BF " Board Fence
- " Diameter
- + 65.00 " Location of Elevations
- + 65.00 " Top of Concrete Curb Elevation
- C/L " Centreline
- OHW " Overhead Utility Wires
- " Property Line

SITE AREA = 1453.1 m²

BOUNDARY INFORMATION DERIVED FROM REGISTRY OFFICE RESEARCH AND OFFICE RECORDS.

ELEVATION NOTES

- Elevations shown are referred to geodetic datum.
- It is the responsibility of the user of this information to verify that the job benchmark has not been altered or disturbed and that its relative elevation and description agrees with the information shown on this drawing.

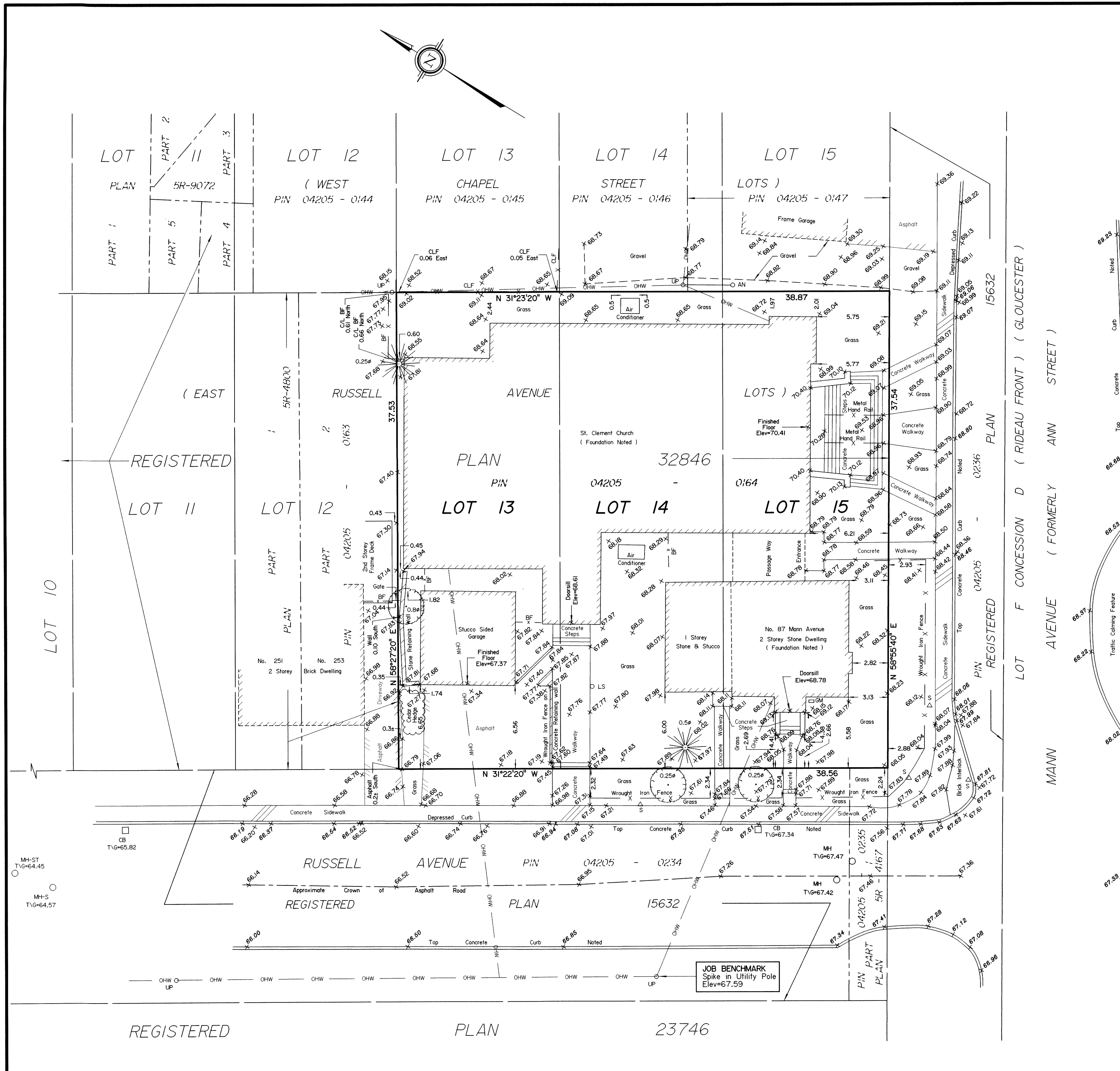
UTILITY NOTES

- This drawing cannot be accepted as acknowledging all of the utilities and it will be the responsibility of the user to contact the respective utility authorities for confirmation.
- Only visible surface utilities were located.
- A field location of underground plant by the pertinent utility authority is mandatory before any work involving breaking ground, probing, excavating etc.

© Annis, O'Sullivan, Vollebek Ltd, 2013. THIS PLAN IS PROTECTED BY COPYRIGHT

ANNIS, O'SULLIVAN, VOLLEBEK LTD.
14 Concourse Gate, Suite 500
Nepean, Ont. K2E 7S6
Phone: (613) 727-0850 / Fax: (613) 727-1079
Email: Nepean@aovltd.com

Ontario Land Surveyors



13/05/2013 10:31:31 AM C:\Users\j... \AppData\Local\Temp\132846.dwg