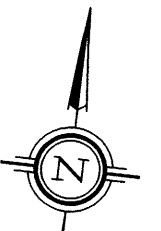


DROUIN AVENUE
PIN 04207 - 0458

590



JOB BENCHMARK
TOP OF SPINDLE ON
FIRE HYDRANT
Elev. = 59.67

LOT 22
PIN 04207 - 0433

LOT 21
PIN 04207 - 0432

LOT 23
PIN 04207 - 0456

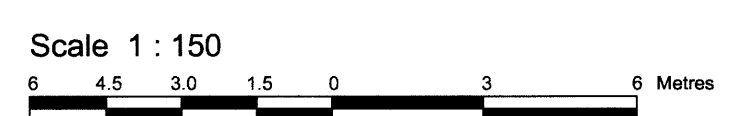
LOT 24

NORTH RIVER ROAD
(Formerly Riverside Drive)

PRESLAND ROAD

TOPOGRAPHICAL PLAN OF
PART OF LOT 22
REGISTERED PLAN 590
CITY OF OTTAWA

Prepared by Annis, O'Sullivan, Vollebakk Ltd.



Metric
DISTANCES SHOWN ON THIS PLAN ARE IN METRES AND
CAN BE CONVERTED TO FEET BY DIVIDING BY 0.3048

Date: April 15, 2013
E.H. Herweyer O.L.S.

Notes & Legend

- Denotes
- MH-ST Maintenance Hole (Storm Sewer)
 - MH-S Maintenance Hole (Sanitary)
 - MH-B Maintenance Hole (Bell)
 - MH Maintenance Hole (Unidentified)
 - OHW Overhead Wires
 - UP Utility Pole
 - CB Catch Basin
 - FH Fire Hydrant
 - T/G Top of Grate
 - △ S Sign
 - MF Metal Fence
 - ∅ Diameter
 - + 65.00 Location of Elevations
 - + 65.00 Location of Elevations (Top of Curb)
 - + 65.00 Location of Elevations (Top of Wall)
 - WRW Wood Retaining Wall
 - C/L Centreline
 - GM Gas Meter
 - Property Line
 - Deciduous Tree
 - ★ Coniferous Tree

- Bearings are astronomic.
- SITE AREA = 645 m²
- BOUNDARY INFORMATION DERIVED FROM FIELD SURVEY.
- ELEVATION NOTES
- Elevations shown are referred to geodetic datum.
 - It is the responsibility of the user of this information to verify that the job benchmark has not been altered or disturbed and that its relative elevation and description agrees with the information shown on this drawing.
- UTILITY NOTES
- This drawing cannot be accepted as acknowledging all of the utilities and it will be the responsibility of the user to contact the respective utility authorities for confirmation.
 - Only visible surface utilities were located.
 - A field location of underground plant by the pertinent utility authority is mandatory before any work involving breaking ground, probing, excavating etc.

Topographic data was collected under Winter Conditions.
Snow cover and ice preclude determining location and elevation of some topographical data that is otherwise visible.

© Annis, O'Sullivan, Vollebakk Ltd. 2013. THIS PLAN IS PROTECTED BY COPYRIGHT

ANNIS, O'SULLIVAN, VOLLEBEKK LTD.
14 Concourse Gate, Suite 500
Nepean, Ont. K2E 7S6
Phone: (613) 727-0850 / Fax: (613) 727-1079
Email: Nepean@aovltd.com

Ontario Land Surveyors