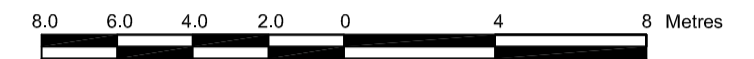


LOTS 1, 2 and 3
East Side Breezehill Avenue North
PART OF BLOCK J
REGISTERED PLAN 73
CITY OF OTTAWA

Prepared by Annis, O'Sullivan, Vollebek Ltd.
Field Work Completed April 5, 2012

Scale 1 : 200



Metric

DISTANCES SHOWN ON THIS PLAN ARE IN METRES AND
CAN BE CONVERTED TO FEET BY DIVIDING BY 0.3048

Date _____ Edward M. Lancaster, O.L.S.

Plan Revised - April 13, 2012 - "Ottawa O - Train" added

Notes & Legend

Denotes	
○ MH-ST	"
○ MH-S	" Maintenance Hole (Sanitary)
○ MH-B	" Maintenance Hole (Bell)
○ MH-T	" Maintenance Hole (Traffic)
○ MH	" Maintenance Hole (Unidentified)
— OHW	" Overhead Wires
○ UP	" Utility Pole
○ AN	" Anchor
○ LS	" Light Standard
□ CB	" Catch Basin
○ FH	" Fire Hydrant
⊗ WV	" Water Valve
T/G	" Top of Grate
○ B	" Bollard
CLF	" Chain Link Fence
BF	" Board Fence
+ 65.00	" Location of Elevations
+ 65.00	" Location of Elevations (Top of Curb)
Fnd.	" Foundation
Switch	" Electrical Transformer on UP
—	" Property Line

Bearings are grid.

SITE AREA = 1345. m²

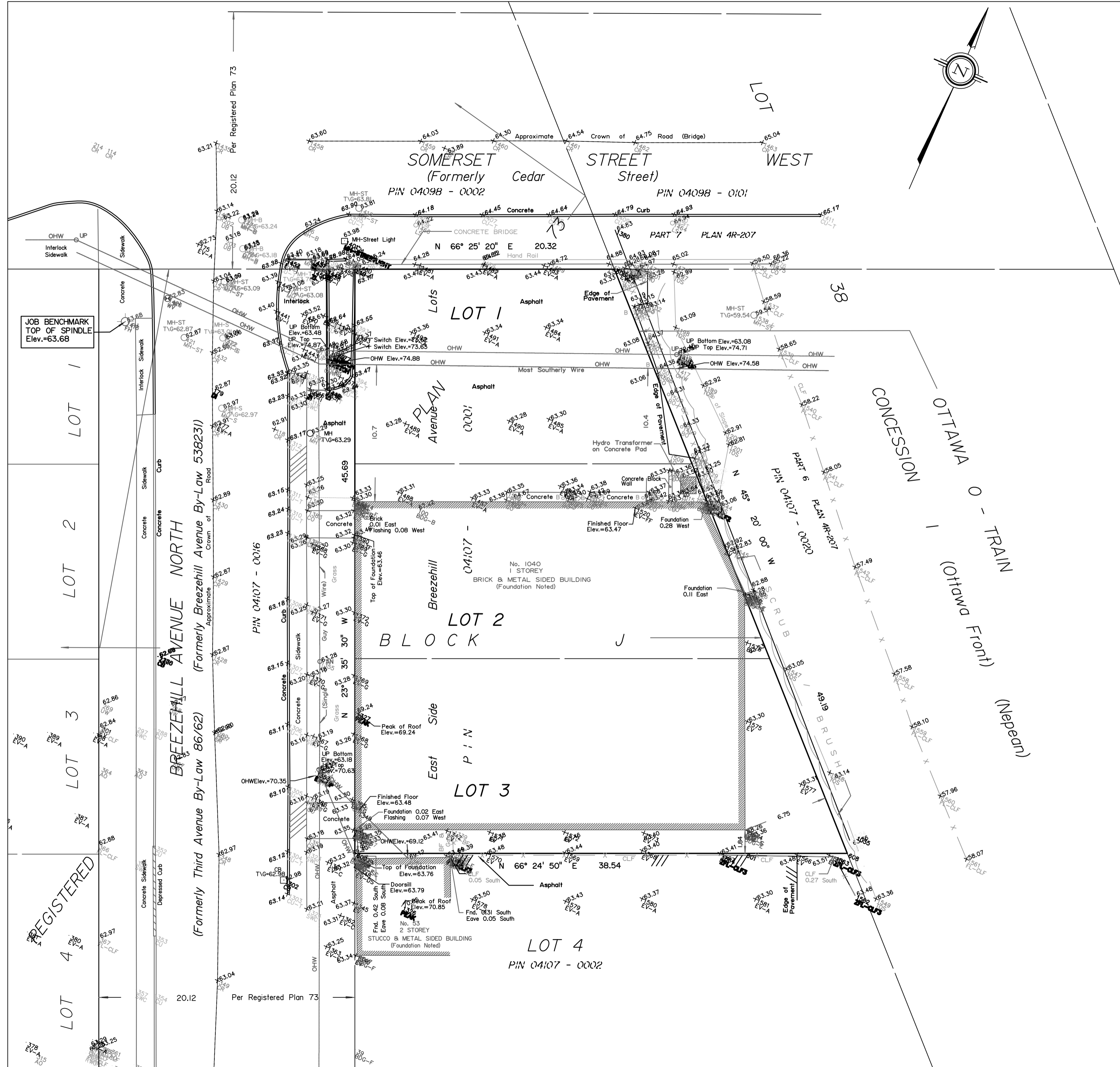
BOUNDARY INFORMATION COMPILED FROM FIELD SURVEY,
REGISTRY OFFICE RECORDS AND OFFICE RECORDS.

ELEVATION NOTES

- Elevations shown are referred to geodetic datum.
- It is the responsibility of the user of this information to verify that the job benchmark has not been altered or disturbed and that its relative elevation and description agrees with the information shown on this drawing.

UTILITY NOTES

- This drawing cannot be accepted as acknowledging all of the utilities and it will be the responsibility of the user to contact the respective utility authorities for confirmation.
- Only visible surface utilities were located.
- A field location of underground plant by the pertinent utility authority is mandatory before any work involving breaking ground, probing, excavating etc.



JOB BENCHMARK
TOP OF SPINDLE
Elev.=63.68