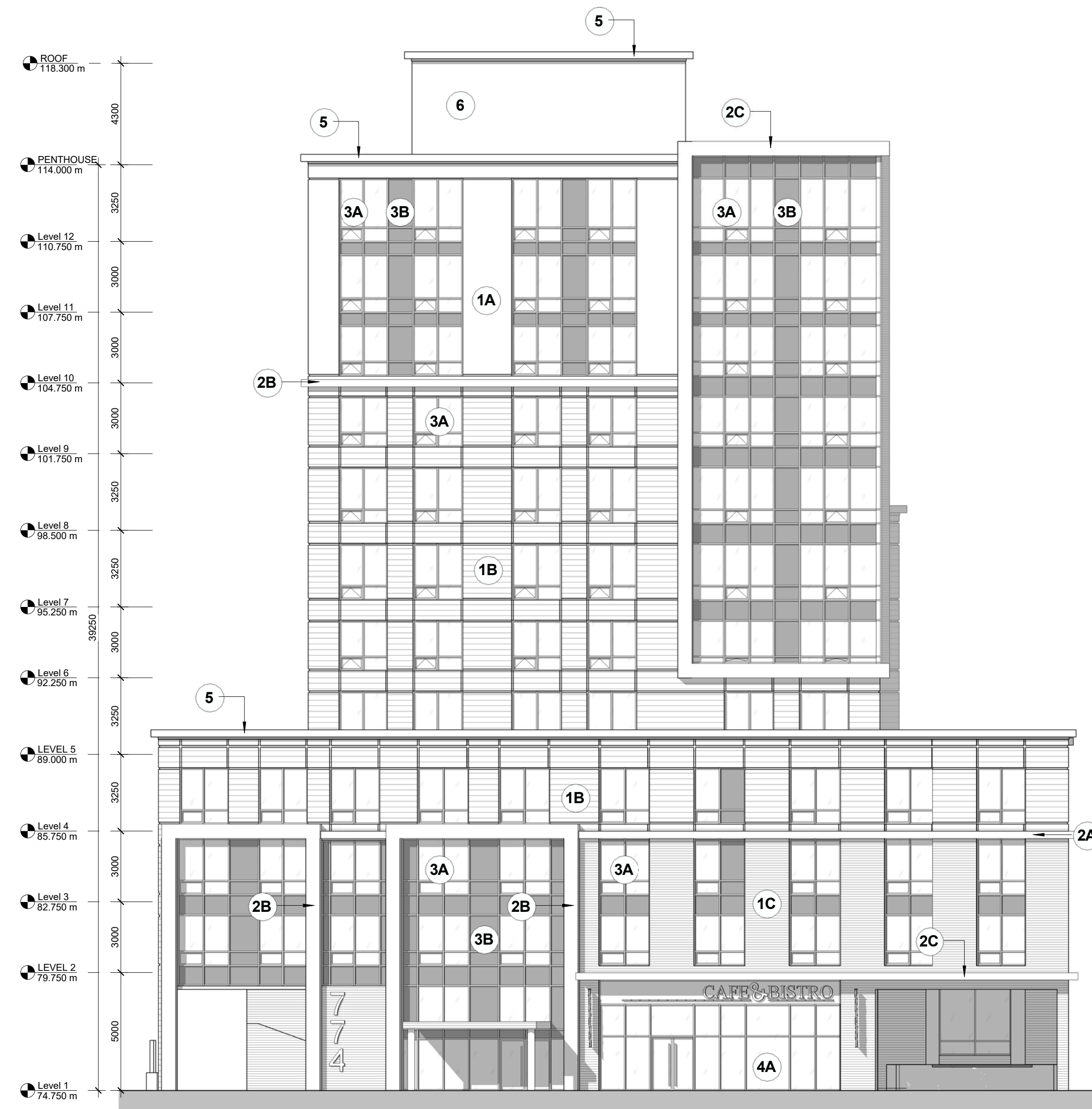
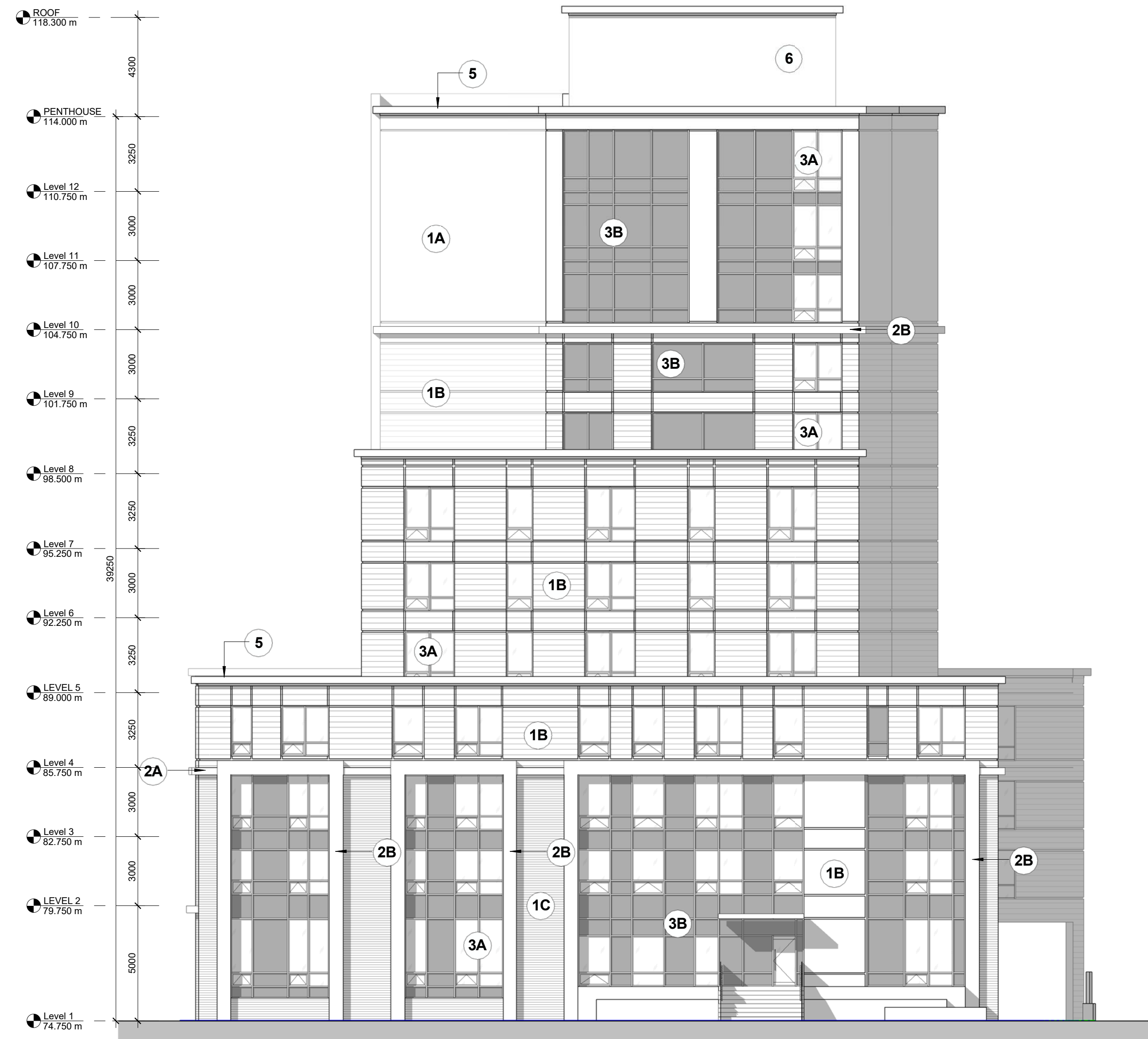


Do not scale drawings. Contractors must check and verify all dimensions and report any discrepancies to the Architect before proceeding with the work. All documents remain the property of the Architect. Unauthorised use, modification, and/or reproduction of these documents is prohibited without written permission. The Contract Documents were prepared by the Consultant for the account of the Owner. The material contained herein reflects the Consultant's best judgment in light of the information available to him at the time of preparation and is not intended to constitute a contract. The Consultant accepts no responsibility for damages, if any, suffered by any third party as a result of decisions made or actions based on the Contract Documents.

C:\Users\sbuote\Documents\15076_774 Bronson_SB\buote.rvt



1 SPA - BRONSON AVENUE ELEVATION
1 : 150




2 SPA - CAMBRIDGE STREET ELEVATION
1 : 150

1. **DO NOT SCALE DRAWINGS.** WRITTEN DIMENSIONS SHALL HAVE PRECEDENCE OVER SCALED DIMENSIONS.
2. ALL WORK SHALL COMPLY WITH THE 2012 ONTARIO BUILDING CODE AND AMENDMENTS.
3. CONTRACTORS MUST CHECK AND VERIFY ALL DIMENSIONS AND SPECIFICATIONS AND REPORT ANY DISCREPANCIES TO THE ARCHITECT BEFORE PROCEEDING WITH THE WORK.
4. ALL CONTRACTORS AND SUB-CONTRACTORS SHALL HAVE A SET OF APPROVED CONSTRUCTION DOCUMENTS ON SITE AT ALL TIMES.
5. ALL DOCUMENTS REMAIN THE PROPERTY OF THE ARCHITECT. UNAUTHORIZED USE, MODIFICATION, AND/OR REPRODUCTION OF THESE DOCUMENTS IS PROHIBITED WITHOUT WRITTEN PERMISSION. THE CONTRACT DOCUMENTS WERE PREPARED BY THE CONSULTANT FOR THE ACCOUNT OF THE OWNER.
6. THE MATERIAL CONTAINED HEREIN REFLECTS THE CONSULTANT'S BEST JUDGEMENT IN LIGHT OF THE INFORMATION AVAILABLE TO HIM AT THE TIME OF PREPARATION. ANY USE WHICH A THIRD PARTY MAKES OF THE CONTRACT DOCUMENTS, OR ANY RELIANCE ON OR DECISIONS TO BE MADE BASED ON THEM ARE THE RESPONSIBILITY OF SUCH THIRD PARTIES.
7. THE CONSULTANT ACCEPTS NO RESPONSIBILITY FOR DAMAGES, IF ANY, SUFFERED BY ANY THIRD PARTY AS A RESULT OF DECISIONS MADE OR ACTIONS BASED ON THE CONTRACT DOCUMENTS.

EXTERIOR FINISH LEGEND

- 1A PRECAST CONCRETE PANEL**
COLOUR: WHITE
- 1B PRECAST CONCRETE PANEL**
COLOUR: CHARCOAL
- 1C PRECAST CONCRETE PANEL**
COLOUR: BROWN
- 2A PRECAST CONCRETE FRAME**
COLOUR: LIGHT GREY
- 2B PRECAST CONCRETE FRAME**
COLOUR: WHITE
- 2C PRECAST CONCRETE FRAME**
COLOUR: CHARCOAL
- 3A PREFINISHED WINDOWWALL**
GLASS TYPE: VISION PANEL
- 3B PREFINISHED WINDOWWALL**
GLASS TYPE: GLASS SPANDREL PANEL
- 3C PREFINISHED WINDOWWALL: OPERABLE AWNING**
GLASS TYPE: VISION PANEL
- 4A PREFINISHED STOREFRONT SYSTEM**
GLASS TYPE: VISION PANEL
- 4B PREFINISHED STOREFRONT SYSTEM**
GLASS TYPE: GLASS SPANDREL PANEL
- 5 PREFINISHED METAL PARAPET**
COLOUR: BLACK
- 6 PREFINISHED METAL PANEL**
COLOUR: WHITE

No.	Date	Revision
01	12/11/2015	ISSUED FOR SPA & ZBA



Project No. 15076

Issue Date


Drawn by Author

Checked by Checker

Plot Date / Time 2015-12-11 11:55:54 AM

**774 BRONSON AVENUE,
OTTAWA**

STREET ELEVATIONS



Drawing Scale 1 : 150

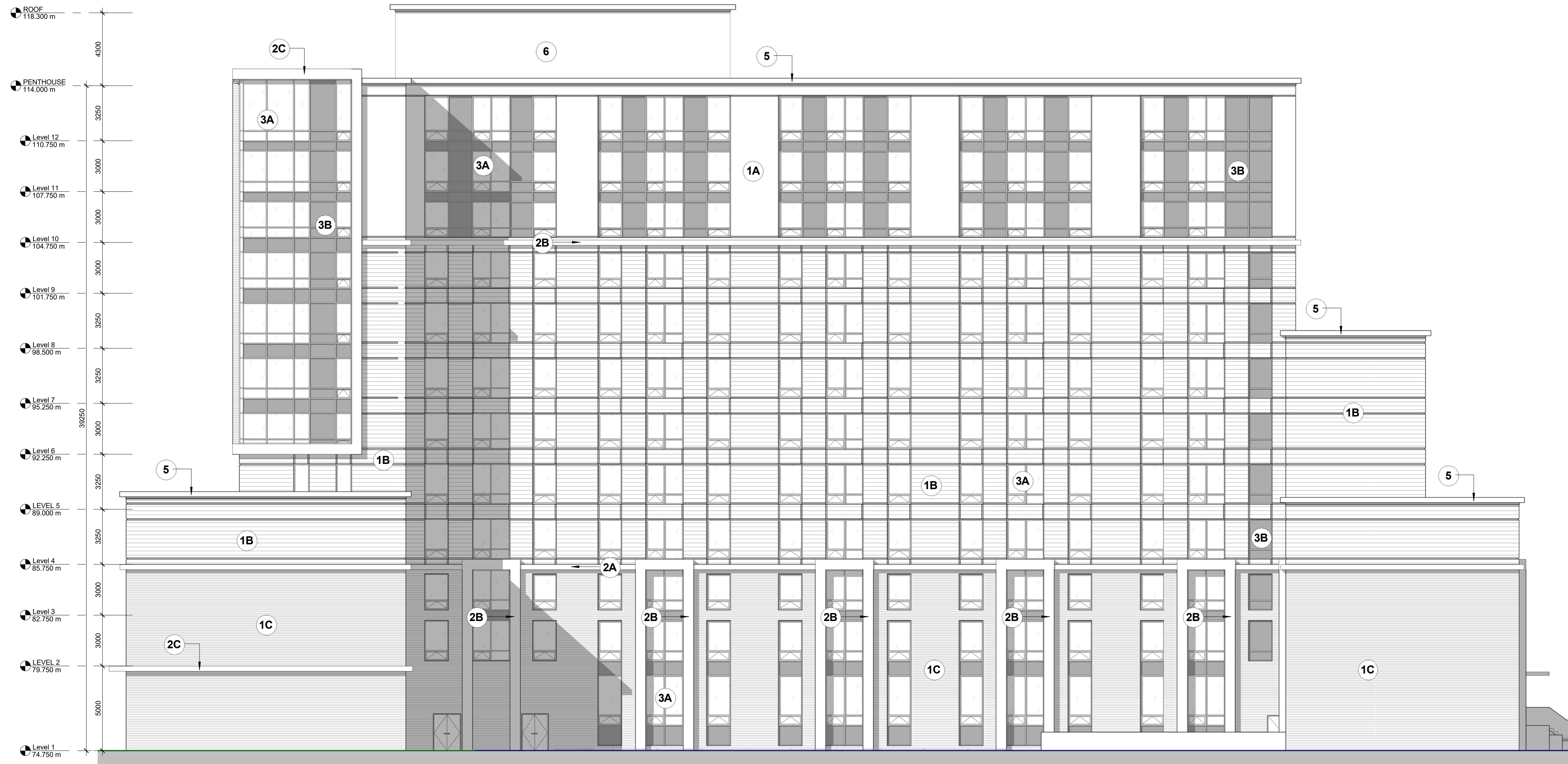
Status

Drawing No. Revision No.

A-3.1

Do not scale drawings. Contractors must check and verify all dimensions and report any discrepancies to the Architect before proceeding with the work. All documents remain the property of the Architect. Unauthorised use, modification, or reproduction of these documents is prohibited without written permission. The Contract Documents were prepared by the Consultant for the account of the Owner. The material contained herein reflects the Consultant's best judgment in light of the information available to him at the time of preparation and is not intended to constitute a contract. The Consultant accepts no responsibility for damages, if any, suffered by any third party as a result of decisions made or actions based on the Contract Documents.

C:\Users\sbuote\Documents\15076_774 Bronson_SBUote.rvt



1 SPA - NORTH ELEVATION
1 : 150

1. **DO NOT SCALE DRAWINGS.** WRITTEN DIMENSIONS SHALL HAVE PRECEDENCE OVER SCALED DIMENSIONS.
2. ALL WORK SHALL COMPLY WITH THE 2012 ONTARIO BUILDING CODE AND AMENDMENTS.
3. CONTRACTORS MUST CHECK AND VERIFY ALL DIMENSIONS AND SPECIFICATIONS AND REPORT ANY DISCREPANCIES TO THE ARCHITECT BEFORE PROCEEDING WITH THE WORK.
4. ALL CONTRACTORS AND SUB-CONTRACTORS SHALL HAVE A SET OF APPROVED CONSTRUCTION DOCUMENTS ON SITE AT ALL TIMES.
5. ALL DOCUMENTS REMAIN THE PROPERTY OF THE ARCHITECT. UNAUTHORIZED USE, MODIFICATION, AND/OR REPRODUCTION OF THESE DOCUMENTS IS PROHIBITED WITHOUT WRITTEN PERMISSION. THE CONTRACT DOCUMENTS WERE PREPARED BY THE CONSULTANT FOR THE ACCOUNT OF THE OWNER.
6. THE MATERIAL CONTAINED HEREIN REFLECTS THE CONSULTANT'S BEST JUDGEMENT IN LIGHT OF THE INFORMATION AVAILABLE TO HIM AT THE TIME OF PREPARATION. ANY USE WHICH A THIRD PARTY MAKES OF THE CONTRACT DOCUMENTS, OR ANY RELIANCE ON OR DECISIONS TO BE MADE BASED ON THEM ARE THE RESPONSIBILITY OF SUCH THIRD PARTIES.
7. THE CONSULTANT ACCEPTS NO RESPONSIBILITY FOR DAMAGES, IF ANY, SUFFERED BY ANY THIRD PARTY AS A RESULT OF DECISIONS MADE OR ACTIONS BASED ON THE CONTRACT DOCUMENTS.

EXTERIOR FINISH LEGEND

- 1A PRECAST CONCRETE PANEL**
COLOUR: WHITE
- 1B PRECAST CONCRETE PANEL**
COLOUR: CHARCOAL
- 1C PRECAST CONCRETE PANEL**
COLOUR: BROWN
- 2A PRECAST CONCRETE FRAME**
COLOUR: LIGHT GREY
- 2B PRECAST CONCRETE FRAME**
COLOUR: WHITE
- 2C PRECAST CONCRETE FRAME**
COLOUR: CHARCOAL
- 3A PREFINISHED WINDOWWALL**
GLASS TYPE: VISION PANEL
- 3B PREFINISHED WINDOWWALL**
GLASS TYPE: GLASS SPANDREL PANEL
- 3C PREFINISHED WINDOWWALL: OPERABLE AWNING**
GLASS TYPE: VISION PANEL
- 4A PREFINISHED STOREFRONT SYSTEM**
GLASS TYPE: VISION PANEL
- 4B PREFINISHED STOREFRONT SYSTEM**
GLASS TYPE: GLASS SPANDREL PANEL
- 5 PREFINISHED METAL PARAPET**
COLOUR: BLACK
- 6 PREFINISHED METAL PANEL**
COLOUR: WHITE

No.	Date	Revision
01	12/11/2015	ISSUED FOR SPA & ZBA

srm ARCHITECTS INC.	Project No.	15076
	Issue Date	
	Drawn by	Author
	Checked by	Checker
	Plot Date / Time	2015-12-11 11:56:24 AM

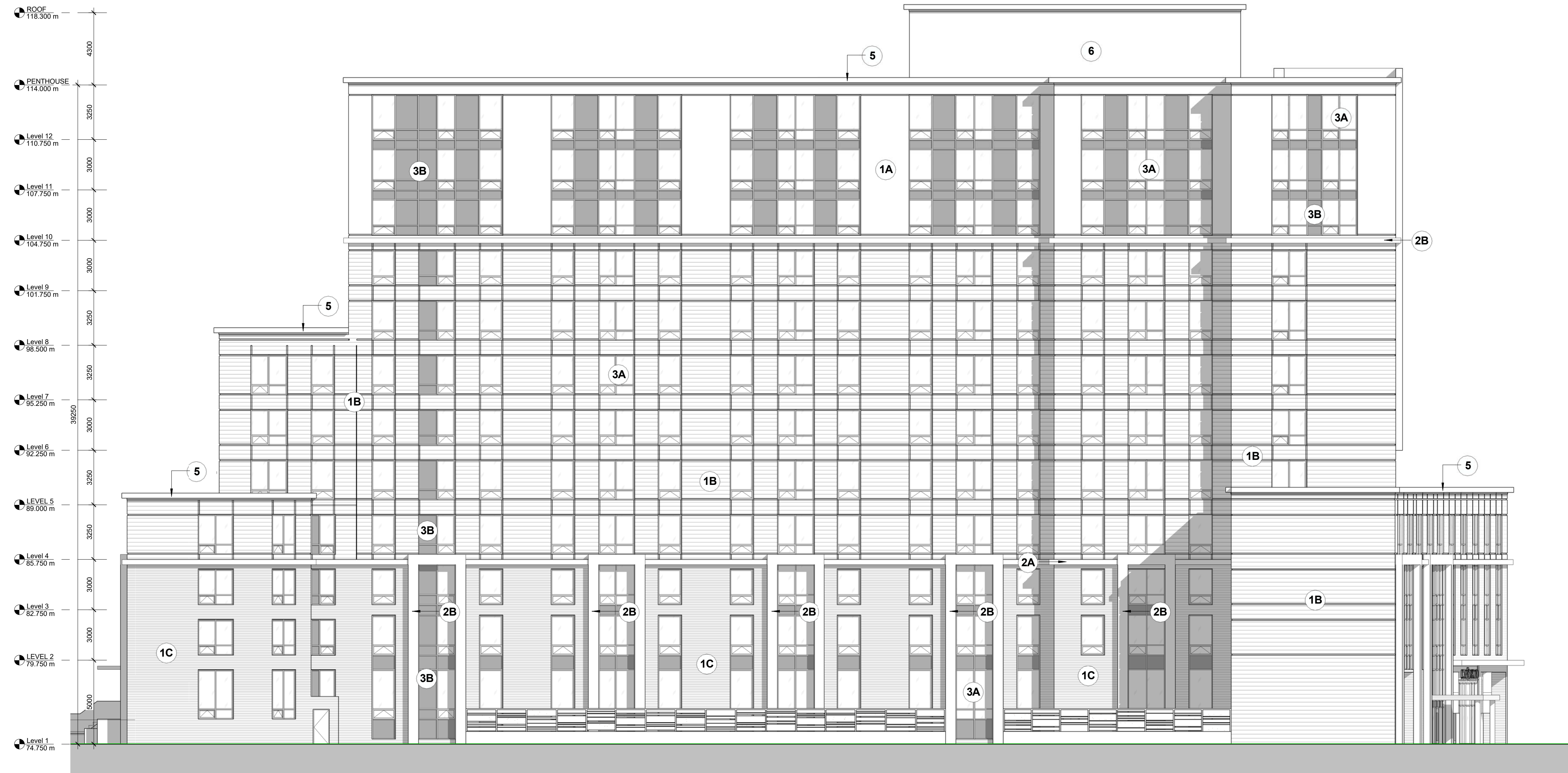
**774 BRONSON AVENUE,
OTTAWA**

NORTH ELEVATION

ONTARIO ASSOCIATION OF ARCHITECTS <small>EDWARD THOMAS LICENCE 5572</small>	Drawing Scale	1 : 150
	Status	
	Drawing No.	Revision No.
	A-3.2	

Do not scale drawings. Contractors must check and verify all dimensions and report any discrepancies to the Architect before proceeding with the work. All documents remain the property of the Architect. Unauthorised use, modification, or reproduction of these documents is prohibited without written permission. The Contract Documents were prepared by the Consultant for the account of the Owner. The material contained herein reflects the Consultant's best judgment in light of the information available to him at the time of preparation. Any use which a third party makes of the Contract Documents, or any reliance on or decisions to be made based on them are the responsibility of such third party. The Consultant accepts no responsibility for damages, if any, suffered by any third party as a result of decisions made or actions based on the Contract Documents.

C:\Users\sbuote\Documents\15076_774 Bronson_SBUote.rvt



1 SPA - SOUTH ELEVATION
1:150

1. **DO NOT SCALE DRAWINGS.** WRITTEN DIMENSIONS SHALL HAVE PRECEDENCE OVER SCALED DIMENSIONS.
2. ALL WORK SHALL COMPLY WITH THE 2012 ONTARIO BUILDING CODE AND AMENDMENTS.
3. CONTRACTORS MUST CHECK AND VERIFY ALL DIMENSIONS AND SPECIFICATIONS AND REPORT ANY DISCREPANCIES TO THE ARCHITECT BEFORE PROCEEDING WITH THE WORK.
4. ALL CONTRACTORS AND SUB-CONTRACTORS SHALL HAVE A SET OF APPROVED CONSTRUCTION DOCUMENTS ON SITE AT ALL TIMES.
5. ALL DOCUMENTS REMAIN THE PROPERTY OF THE ARCHITECT. UNAUTHORIZED USE, MODIFICATION, AND/OR REPRODUCTION OF THESE DOCUMENTS IS PROHIBITED WITHOUT WRITTEN PERMISSION. THE CONTRACT DOCUMENTS WERE PREPARED BY THE CONSULTANT FOR THE ACCOUNT OF THE OWNER.
6. THE MATERIAL CONTAINED HEREIN REFLECTS THE CONSULTANT'S BEST JUDGEMENT IN LIGHT OF THE INFORMATION AVAILABLE TO HIM AT THE TIME OF PREPARATION. ANY USE WHICH A THIRD PARTY MAKES OF THE CONTRACT DOCUMENTS, OR ANY RELIANCE ON OR DECISIONS TO BE MADE BASED ON THEM ARE THE RESPONSIBILITY OF SUCH THIRD PARTIES.
7. THE CONSULTANT ACCEPTS NO RESPONSIBILITY FOR DAMAGES, IF ANY, SUFFERED BY ANY THIRD PARTY AS A RESULT OF DECISIONS MADE OR ACTIONS BASED ON THE CONTRACT DOCUMENTS.

EXTERIOR FINISH LEGEND

- 1A PRECAST CONCRETE PANEL**
COLOUR: WHITE
- 1B PRECAST CONCRETE PANEL**
COLOUR: CHARCOAL
- 1C PRECAST CONCRETE PANEL**
COLOUR: BROWN
- 2A PRECAST CONCRETE FRAME**
COLOUR: LIGHT GREY
- 2B PRECAST CONCRETE FRAME**
COLOUR: WHITE
- 2C PRECAST CONCRETE FRAME**
COLOUR: CHARCOAL
- 3A PREFINISHED WINDOW WALL**
GLASS TYPE: VISION PANEL
- 3B PREFINISHED WINDOW WALL**
GLASS TYPE: GLASS SPANDREL PANEL
- 3C PREFINISHED WINDOW WALL: OPERABLE AWNING**
GLASS TYPE: VISION PANEL
- 4A PREFINISHED STOREFRONT SYSTEM**
GLASS TYPE: VISION PANEL
- 4B PREFINISHED STOREFRONT SYSTEM**
GLASS TYPE: GLASS SPANDREL PANEL
- 5 PREFINISHED METAL PARAPET**
COLOUR: BLACK
- 6 PREFINISHED METAL PANEL**
COLOUR: WHITE

No.	Date	Revision
01	12/11/2015	ISSUED FOR SPA & ZBA

srm ARCHITECTS INC.	Project No.	15076
	Issue Date	
	Drawn by	Author
	Checked by	Checker
	Plot Date / Time	2015-12-11 11:56:51 AM

**774 BRONSON AVENUE,
OTTAWA**

SOUTH ELEVATION

ONTARIO ASSOCIATION OF ARCHITECTS <small>EDWARD THOMAS LICENCE 5572</small>	Drawing Scale	1 : 150
	Status	
	Drawing No.	Revision No.
	A-3.3	