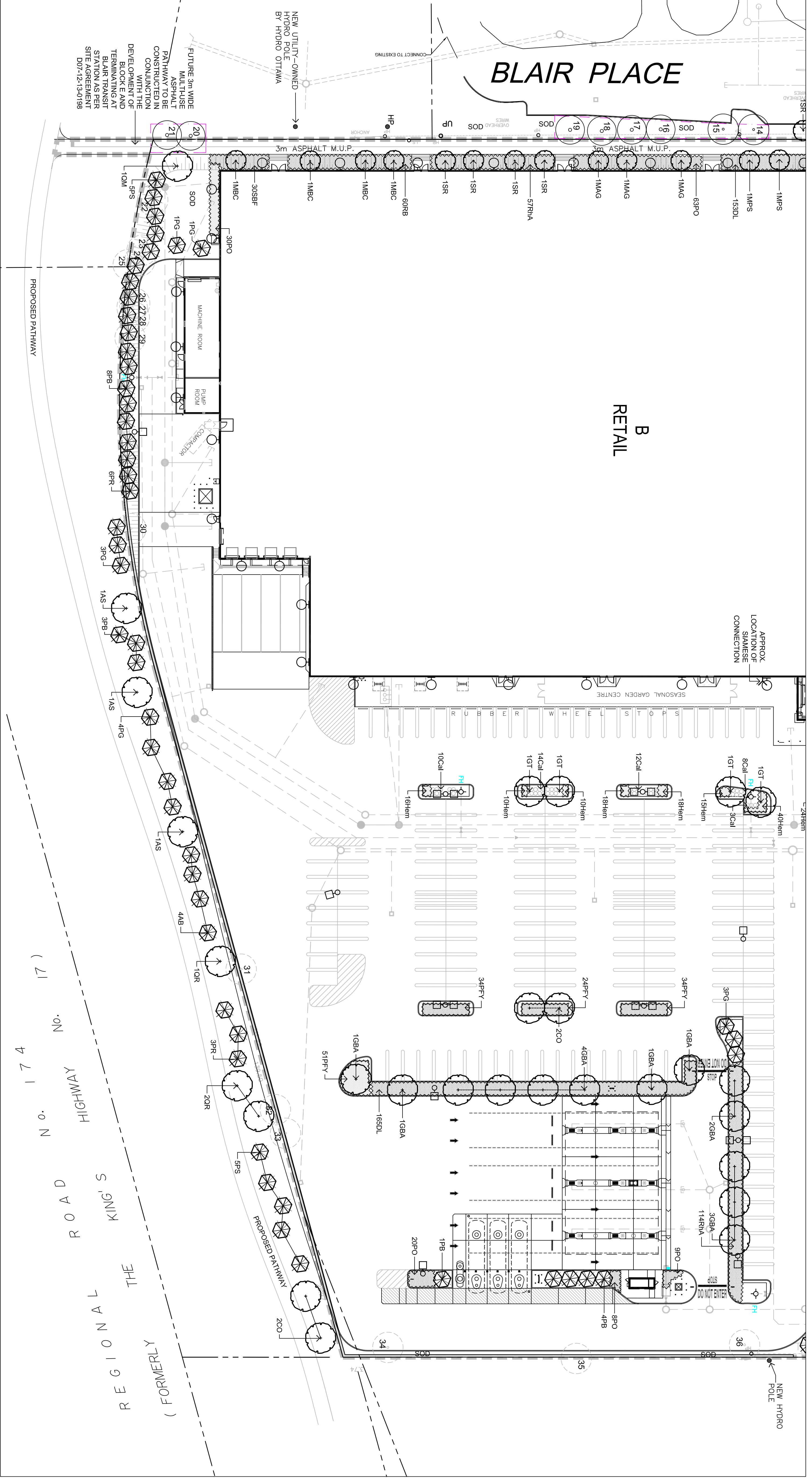


LEGEND / SYMBOL

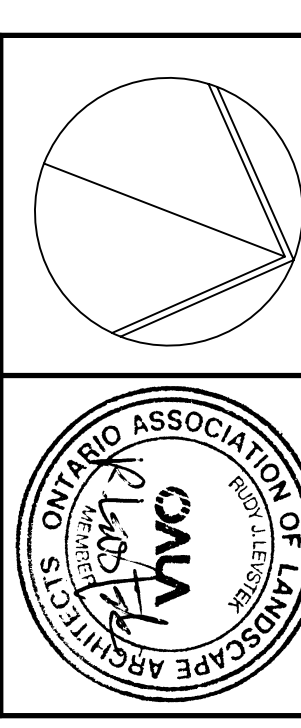
	EXISTING TREE TO REMAIN
	EXISTING TREE TO BE REMOVED
	PROPOSED DECIDUOUS TREE (SEE DETAIL L1.1.03)
	PROPOSED CONIFEROUS TREE (SEE DETAIL L1.1.03)
	PROPOSED DECIDUOUS/CONIFEROUS (SEE DETAIL L1.1.03)
	LIGHT STANDARDS (REFER TO ELECTRICAL)
	TREE PROTECTION BARRIER (SEE DETAIL 2L1.03)
	BRICK PAVING (SEE DETAIL 3L1.03)
	UNIT PAVING (CONCRETE) (SEE DETAIL 4L1.03)
	ASPHALT PAVING (SEE DETAIL 5L1.03)
	GRAVEL PAVING (SEE DETAIL 6L1.03)
	STONE PAVING (SEE DETAIL 7L1.03)
	CONCRETE PAVING (SEE DETAIL 8L1.03)



NOT FOR CONSTRUCTION

FORESTRY SERVICES BRANCH IS TO CONTACT TO ARRANGE A SITE VISIT TO INSPECT THE TREE PROTECTION MEASURES ALONG BLAIR PLACE ONCE THEY ARE FULLY INSTALLED. ALL THE COMMENCEMENT OF ANY TREE REMOVAL AND/OR ON-SITE WORKS AND MAINTENANCE FOR THE DURATION OF CONSTRUCTION.

NO.	DATE	REVISION	BY	FOR
1.	MAY 17/18	ISSUE FOR SPA		
2.	JULY 29/18	PER CITY COMMENTS (1)		



LEVSTEK CONSULTANT
3871 HIGH CRESCENT - OTTAWA, ONTARIO - K2A 2W8
913 - 828 - 0318

TRINITY

SHOPPER'S CITY EAST
2012 OGILVIE ROAD, OTTAWA

BLOCK B

LANDSCAPE PLAN

Client	Shopper's City East
Project	2012 Ogilvie Road, Ottawa
Block	Block B
Drawing No.	L1.03
Scale	1:400
Date	AUG 2015
Project No.	1076.05
Sheet	OF 3