

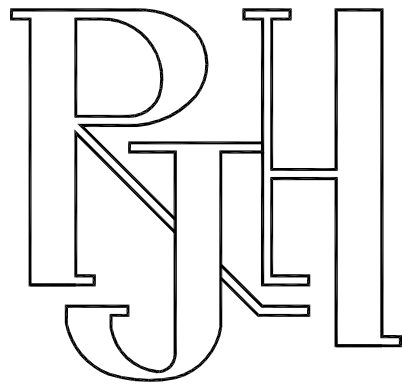
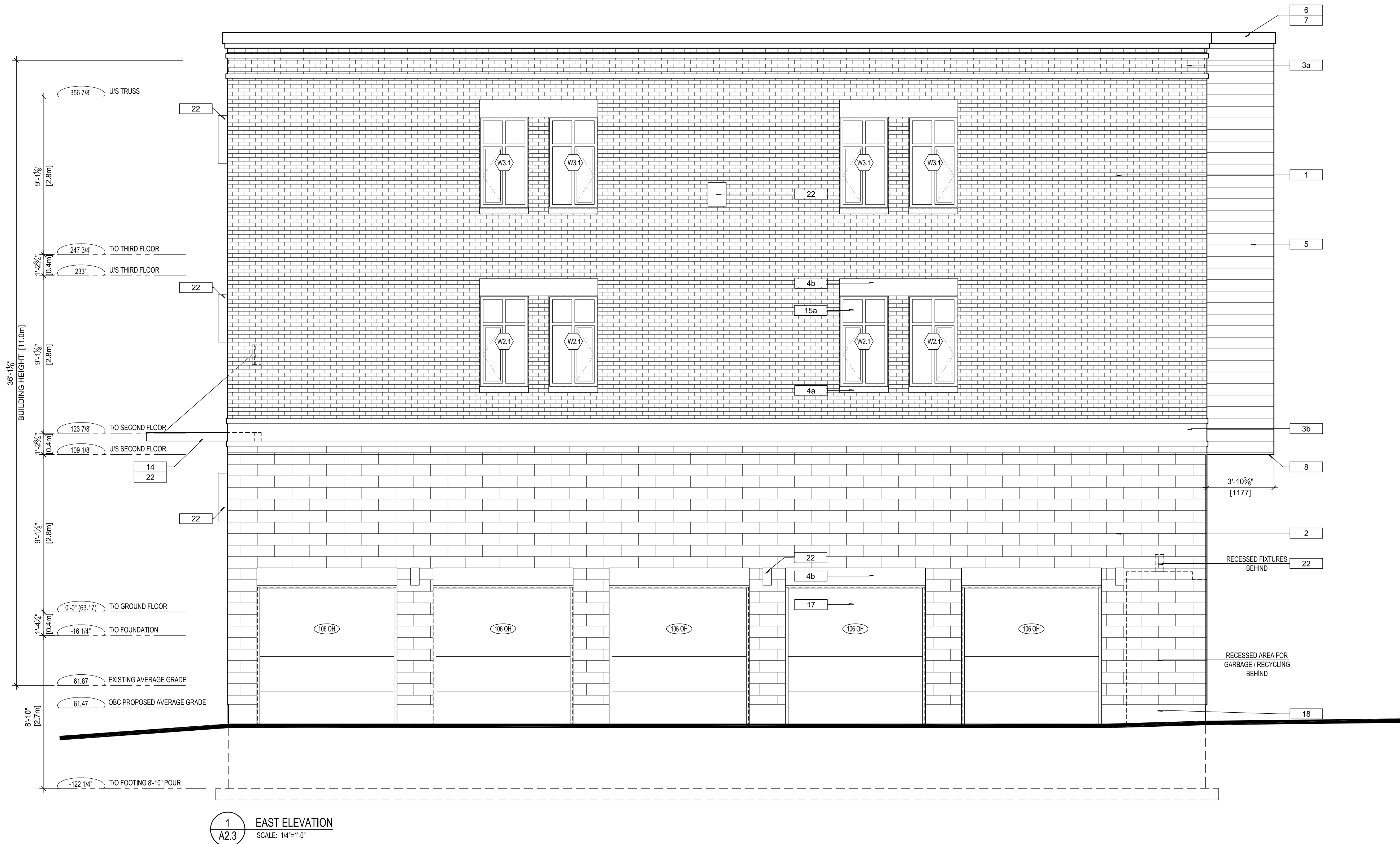
KEY TO MATERIALS	
1	BRICK VENEER by BRAMPTON BRICK COLOUR: OLD CHICAGO SIZE: 10 18x3 18x3 1/2 (PREMIER PLUS) MORTAR: TBD
2	STONE VENEER by SHOULDLICE COLOUR: PEARL WHITE (TAPESTRY) SIZE: 13 3/4 x 1 1/2 x 1/2 MORTAR: TBD
3a	PRIMARY CORNICE MASONARY VENEER: TBD COLOUR: TBD SIZE: TBD MORTAR: TBD
3b	SECONDARY CORNICE MASONARY: TBD COLOUR: TBD SIZE: TBD MORTAR: TBD
4a	SHOULDLICE STONE SILL COLOUR: TBD
4b	SHOULDLICE STONE LINTEL COLOUR: TBD
5	SIDING TEXTURE: TBD COLOUR: TBD
6	PREFINISHED 22ga ALUMINUM FLASHING COLOUR: TBD
7	PREFINISHED 22ga ALUMINUM FASCIA COLOUR: TBD
8	PREFINISHED VENTED SOFFIT COLOUR: TBD
9	PREFINISHED 22ga ALUMINUM FASCIA COLOUR: CLEAR ANODIZED PROFILE: DB FASCIA 1x4 ON 2x8
10a	GUARD AT BALCONY - ENGINEERED DRAWINGS TO BE PROVIDED TO BUILDING INSPECTOR
10b	PRIVACY PANEL
11	BALCONY TOPPING MEMBRANE
12	BALCONY POST
13a	ALUMINUM CLAD WINDOW COLOUR: TBD
13b	ALUMINUM CLAD DOOR COLOUR: TBD
13c	ALUMINUM FLASHING COLOUR: TBD
14	SUSPENDED CANOPY: TBD
15a	ALUMINUM CLAD VINYL WINDOWS COLOUR: TBD
15b	ALUMINUM CLAD VINYL PATIO DOORS COLOUR: TBD
16	INSULATED METAL DOOR & FRAME COLOUR: TBD
17	SECTIONAL STEEL GARAGE DOOR COLOUR: TBD
18	CEMENT PAVING
19	RETAINING WALL - PRECAST CONCRETE MODULAR UNITS: TBD
20	GUARD AT FRONT DOOR & RAMP - ENGINEERED DRAWINGS TO BE PROVIDED TO BUILDING INSPECTOR
21	ROOFING MEMBRANE
22	LIGHT FIXTURE (MSC. TYPE)
23	CALL BOX
24	AUTOMATIC OPENER

APPROVED ☒ REFUSED ☐

THIS _11_ DAY OF August, 2020

Erin O'Connell

ERIN O'CONNELL, MCIP, RPP, MANAGER (A)
DEVELOPMENT REVIEW, WEST
PLANNING, INFRASTRUCTURE AND ECONOMIC
DEVELOPMENT DEPARTMENT, CITY OF OTTAWA



Rosaline J. Hill Architect Inc.

No.	Y / M / D	REVISION
6.	2020-05-01	SITE PLAN COMMENTS
5.	2020-03-17	ISSUED FOR BUILDING PERMIT
4.	2020-02-25	FOR CONSULTANT COORDINATION
3.	2020-02-24	ISSUED FOR RE-SUBMISSION
2.	2020-02-03	COORD. FOR RE-SUBMISSION
1.	2019-11-08	ISSUED FOR SITE PLAN CONTROL

Civil Engineer: LRL Associates Ltd. Smith, Elliott johnson@lrl.ca 613-842-3434 (x 223)	Structural Engineer: Smith, Elliott LRL Associates Ltd. esmith@lrl.ca 613-842-3434 (ext. 213)
Surveyor: Annis O'Sullivan Vollebakk Ltd. Ed Harwayer EdH@annisd.com 613-727-0934	Landscape Architect: James B. Lennox & Associates Inc. Lennox, James jl@jbla.ca 613-722-5168
Mech/Elec. Engineer: LRL Associates Ltd. Tessier, Martin mtessier@lrl.ca 613-842-3434 (x 240)	Noise Consultant: State of the Art Acoustik Inc. Alexandre Fortier afortier@sota.ca 613-745-2003 ext. 5
Environmental Study: Pinchin Ltd. Wilson, Christine cwilson@pinchin.com 613-592-3387 (x 1827)	Geotechnical Engineer: Paterson Group David Gilbert DGilbert@patersongroup.ca 613-226-7381 ext. 205

It is the responsibility of the appropriate contractor to check & verify all dimensions on site and report all errors & omissions to the architect. All contractors must comply with all pertinent codes & by-laws, & use proprietary products as directed by the manufacturer. Do not scale drawings. This drawing may not be used for construction until issued as such. Copyright reserved.

COLUMBUS APARTMENTS
261-265 Columbus Ave., Ottawa, Ontario

EAST ELEVATION

Drawn By: AW	Date: July 2019
Project No: 1902	Scale: 1/4" = 1'-0"

A2.4

18141

D07-12-19-0192