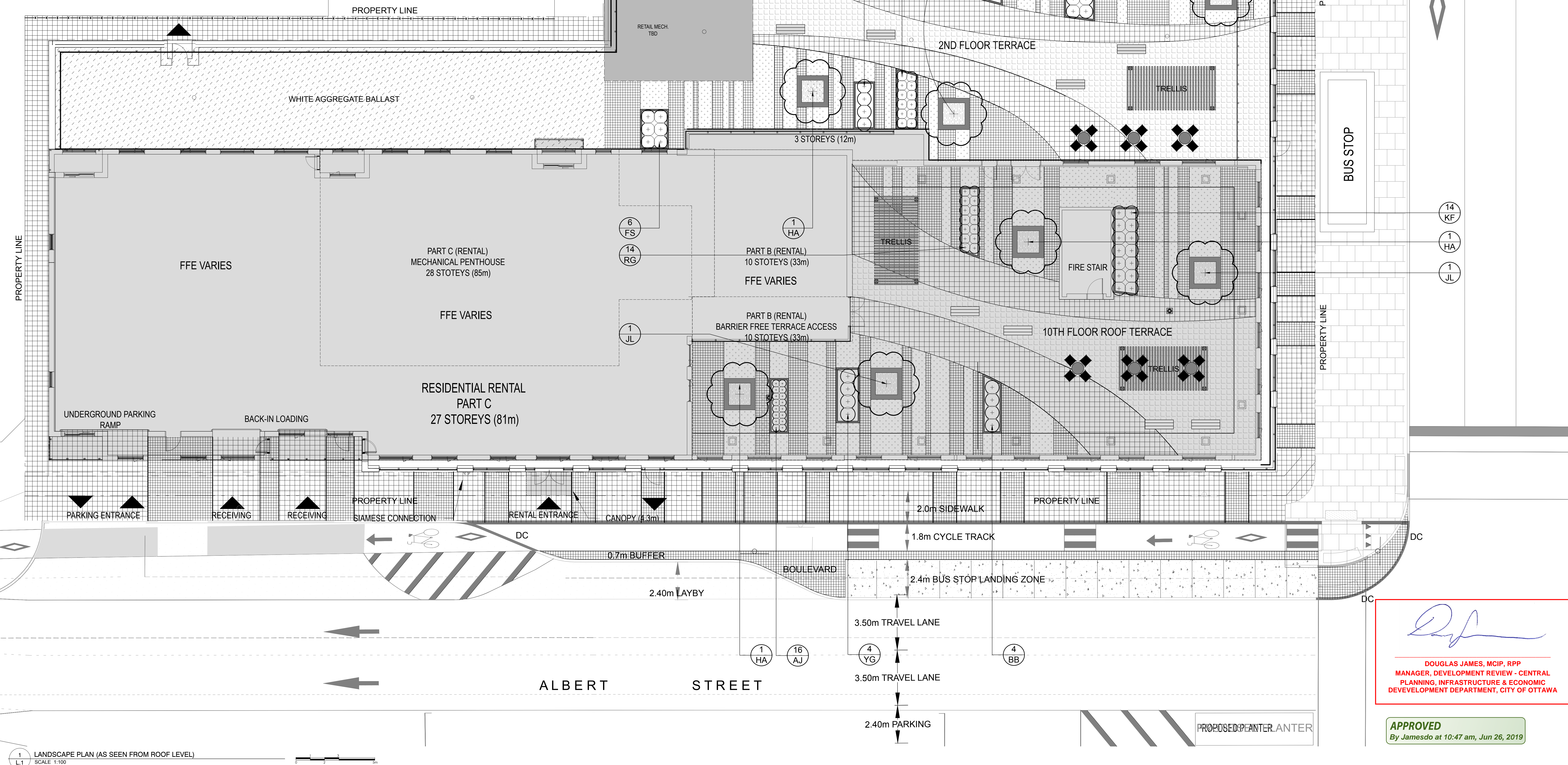
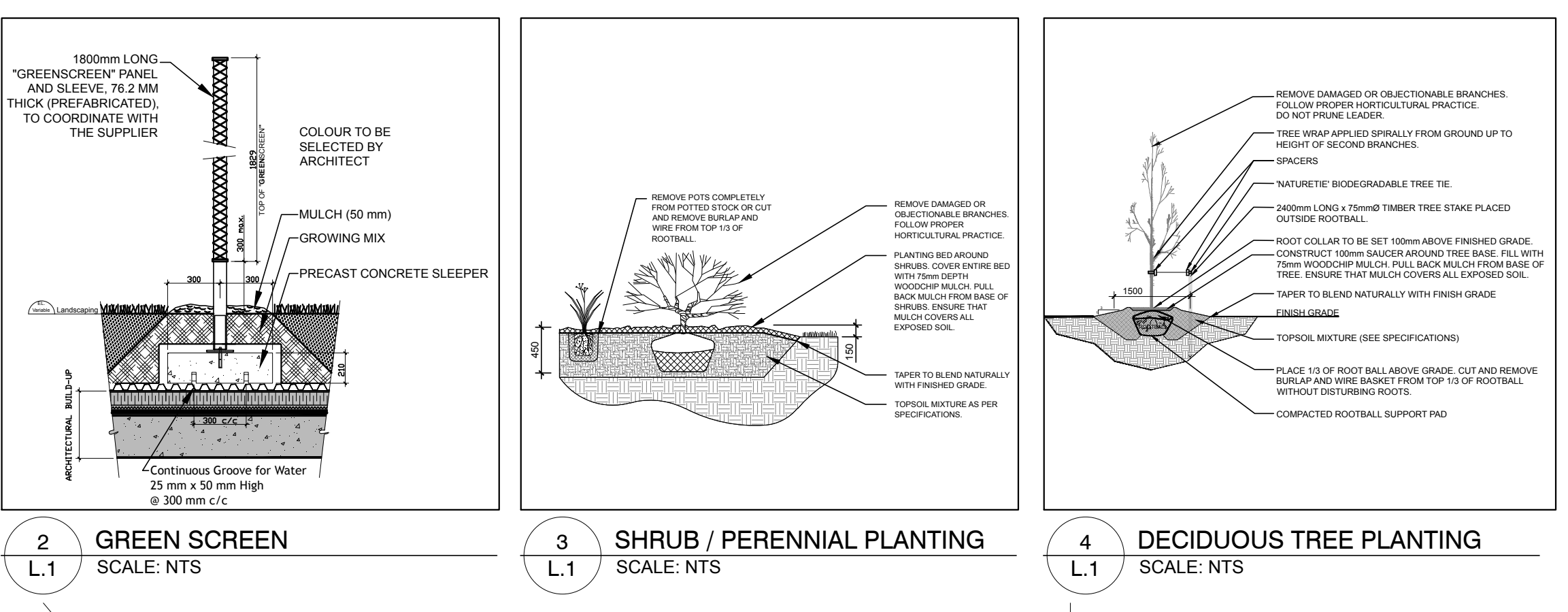


PROPOSED PLANT LIST					
KEY	QTY	BOTANICAL NAME	COMMON NAME	SIZE	CONDITION
TREES					
SB	3	Amelanchier canadensis	Shadblow Serviceberry	60mm ø	B&B
HA	3	Crataegus crus-galli var. inermis	Thornless Cockspur Hawthorne	60mm ø	B&B
JL	2	Syringa reticulata	Japanese Tree Lilac	60mm ø	B&B
SHRUBS & ORNAMENTAL GRASSES					
BB	4	Berberis thunbergii 'Burgundy'	Royal Burgundy Barberry	400mm ht.	Potted
AH	4	Hydrangea arborescens 'Annabelle'	Annabelle Hydrangea	1 gallon pot	Potted
FS	6	Scorbaria scottii 'Sera'	Sera Fuchsia	600mm ht.	Potted
SN	4	Symphoricarpos albus	Snowberry	600mm ht.	Potted
CB	4	Symphoricarpos chenaultii	Hancock Coralberry	600mm ht.	Potted
YG	4	Yucca glauca	Spanish Bayonet	3 gal. pot	Potted
PERENNIALS, VINES & ORNAMENTAL GRASSES					
KF	14	Calamagrostis 'Karl Foerster'	Karl Foerster Grass	250mm pot	Potted
BA	12	Hosta 'Blue Angel'	Blue Angel Hosta	150mm pot	Potted
VW	20	Hosta undulata 'Alba Marginala'	Verigated White Hosta	150mm pot	Potted
RG	14	Phlox arbutifolia	Strawberries & Cream	250mm pot	Potted
AJ	16	Sedum 'Autumn Joy'	Autumn Joy	150mm pot	Potted

- GENERAL NOTES:
- It is the responsibility of the appropriate contractor or official to report any errors, omissions or discrepancies on this plan with actual site conditions to the Landscape Architect before proceeding with construction.
 - The contractor is to verify all utility companies and authorities prior to any excavation and ascertain locations of underground services.
 - The contractor is to relocate all areas and items damaged as a result of construction activity.
 - The contractor is to comply with all pertinent codes and by laws.
 - The contractor is to maintain a positive surface runoff throughout the entire construction period.
 - The Landscape Architect is not responsible for subsurface conditions.
 - The contractor is to identify all existing trees to remain on site with the Landscape Architect prior to construction.
 - The contractor is to stake the proposed location of all plant material in consultation with the Landscape Architect prior to excavation.
 - Minimum distances for selected deciduous trees are as follows:
 - Building Foundation: 7.6m
 - Sidewalk: 1.5m
 - Underground Infrastructure: 2.0m
 - All trees within 1m of underground utility trenches are to be excavated by hand.
 - Remove all protective wrapping from trees trunks after installation.
 - Staking of trees shall only be performed if necessary.
 - Ensure that mulch is packed back a min. distance of 30mm from base of tree trunk.
 - Deciduous trees to be planted on private property 450mm inside of property line.



CLIENT: **Claridge Homes**
210 Gladstone Ave., Suite 2001
Ottawa, ON
Tel: (613) 233-0020

LOCATION PLAN

CONSULTANTS

ARCHITECTS: **NEUF architect(s)**
630 boul. René-Lévesque O. 32e étage
Montréal, QC
Tel: (514) 847-1117

SURVEYORS: **Annis, O'Sullivan, Vollbrecht Ltd.**
14 Concourse Gate, Suite 500
Naperville, ON
Tel: (613) 727-0850

STRUCTURAL ENGINEERS: **Goodve Manhire Partners Inc.**
77 Auriga Drive, Suite 18
Ottawa, ON
Tel: (613) 224-6568

MECHANICAL AND ELECTRICAL ENGINEERS: **Quadrant Engineering Ltd.**
107 Prebina Ave.
Ottawa, ON
Tel: (613) 567-1487

CIVIL ENGINEERS: **Novatech Engineering Consultants Ltd.**
240 Michael Cowland Dr., Suite 200
Ottawa, ON
Tel: (613) 224-8543

LEGEND

- PROPOSED DECIDUOUS TREE
- PROPOSED PERMACON CASSARA VERDE PAVES "RANGE SHADED GREY" VEGETATED PAVES W/ GRASS
- PROPOSED "PERMACON" CASSARA PAVES "RANGE SHADED GREY" COLOUR
- "PERMACON" CASSARA "PLANK PAVES" "ROCKLAND BLACK" COLOUR
- EXISTING PAVES TO REMAIN
- PROPOSED ROOF GROUND COVER Vinca minor, Periwinkle
- PROPOSED SOD
- PROPOSED VINE
- PROPOSED 1.8m Ht. "OMEGA 10" FENCE
- "MAGLIN" 400 SERIES BACKLESS CLUSTER c/w "IPE" WOOD SEATING AND TABLE WITH PRECAST CONCRETE EDGING
- "MAGLIN" FRT-1700-BH-RO-30 SERIES STOOL AND TABLE LASER DESIGN
- "MAGLIN" 1050B BACKLESS BENCH c/w "IPE" SEATING
- PRECAST CONCRETE PLANTER. "PERMACON" "CITY WALL" "ROCKLAND BLACK" c/w COPING MODULES IN "STERLING GREY" 1300x1300x750mm Ht.
- PROPOSED RAILING

PROPERTY LINE

6	REVISED AS PER CITY COMMENTS	25/04/2019	LC	JL
5	ISSUED FOR SITE PLAN CONTROL	15/02/2019	LC	JL
4	ISSUED FOR UDRP SUBMISSION	29/11/2018	LC	JL
3	ISSUED FOR ZONING BY-LAW AMENDMENT / SITE PLAN CONTROL	20/08/2018	LC	JL
2	ISSUED FOR SITE PLAN APPROVAL	15/10/2013	VP	JL
1	ISSUED FOR COORDINATION	10/10/2013	VP	JL

No. Issue Date DR CK

JAMES B. LENNOX & ASSOCIATES INC.
LANDSCAPE ARCHITECTS
3332 CARLING AVE. OTTAWA, ONTARIO K2H 5A8
Tel: (613) 722-5168 Fax: (866) 343-3942

PROJECT
383 ALBERT STREET AND 340 QUEEN STREET

DRAWING
LANDSCAPE PLAN

STAMP

SCALE
See Plan

START DATE
September 2013

PROJECT NO.
13-CLG-1370

DRAWING NO.
L.1

PLOT SIZE ARCH-E

DOUGLAS JAMES, MCIP, RPP
MANAGER, DEVELOPMENT REVIEW - CENTRAL
PLANNING, INFRASTRUCTURE & ECONOMIC
DEVELOPMENT DEPARTMENT, CITY OF OTTAWA

APPROVED
By Jamesdo at 10:47 am, Jun 26, 2019