

APPROVED  REFUSED

THIS \_\_\_\_ DAY OF \_\_\_\_\_, 20\_\_

JEFF MCEWEN, P.ENG  
 MANAGER DEVELOPMENT REVIEW - EAST  
 PLANNING, INFRASTRUCTURE & ECONOMIC  
 DEVELOPMENT DEPARTMENT, CITY OF OTTAWA

NOTES GÉNÉRALES / General Notes

- Ces documents d'architecture sont la propriété exclusive de NEUF architect(e)s et ne peuvent être utilisés, reproduits ou copiés sans autorisation écrite au préalable. / These architectural documents are the exclusive property of NEUF architect(e)s and cannot be used, copied or reproduced without written pre-authorization.
- Les dimensions apparaissant aux documents doivent être vérifiées par l'entrepreneur avant le début des travaux. / All dimensions which appear on the documents must be verified by the contractor before starting the work.
- Veuillez aviser l'architecte de toute dimension erronée ou divergente entre ces documents et ceux des autres professionnels. / The architect must be notified of all errors, omissions and discrepancies between these documents and those of other professionals.
- Les dimensions sur ces documents doivent être lues et non mesurées. / The dimensions on these documents must be read and not measured.

ARCHITECTURE DE PAYSAGE Landscape architect  
**James B. Lennox & Associates**  
 361, Hinton Avenue South, Ottawa ON K1Y 1A6  
 T 613 722 5168 jbla.ca

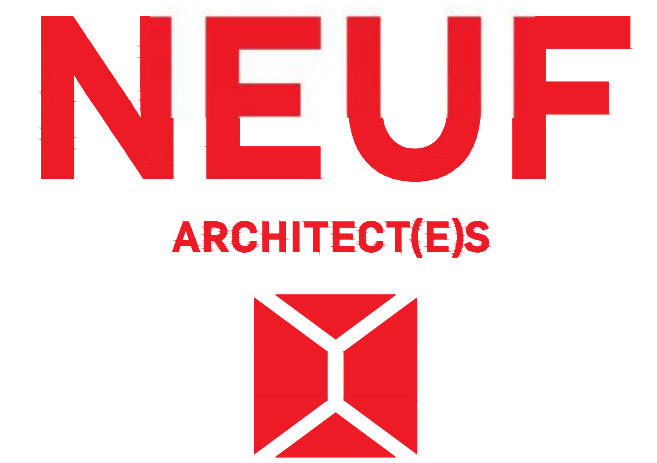
ARPEUTEUR Surveyor  
**Annis O'Sullivan Vollebek Ltd.**  
 14, Concourse Gate, Suite 500, Nepean ON K2E 7S6  
 T 613 727 0850 nepean@aoivtld.com

GÉOTECHNIQUE Geotechnical  
**Golder Associates**  
 1931, Robertson Road, Ottawa ON K2H 5B7  
 T 613 592 8600 golder.ca

CIVIL Civil  
**IBI Group**  
 400-333, Preston Street, Ottawa ON K1S 5N4  
 T 613 225 1311 ibigroup.com

ARCHITECTES Architect  
**NEUF architect(e)s** SENCRL  
 630 boul. René-Lévesque O. 12e étage, Montréal QC H3B 1S6  
 T 514 647 1117 NEUFarchitectes.com

SCÉAU Seal



OUVRAGE Project  
**Trim & Innes Retirement Community**  
 Emplacement Location NO PROJET No.  
 Orleans, ON 11360

NO	REVISION	DATE (aa.mm.jj)
1	Site Plan Application	2017.03.24
2	Re-issued for Site Plan Application	2017.08.07

DESSIN PAR Drawn by PV  
 VÉRIFIÉ PAR Checked by LH  
 DATE (aa.mm.jj) 17.02.28  
 ÉCHELLE Scale 1:200  
 TITRE DU DESSIN Drawing Title

**Basement Level**

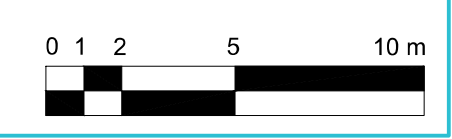
REVISION Revision NO. DESSIN Dwg Number  
**2 A100**  
 #17413



STATISTICS - ORLEANS RETIREMENT COMMUNITY								
August 07, 2016								
Floor	Gross Floor Area (s.f.)	Gross Construction Area (s.f.)	Assisted Care	Studio suite	1 br	1 br + den	2 br	Total units
1st Basement	0	24156						
<b>TOTAL UNDER GROUND</b>	<b>0</b>	<b>24156</b>						
Ground Floor	0	23780						
2nd floor (Assisted care)	13529	22026	34					34
3rd floor (Assisted care)	12873	22026	32					32
4th floor	17164	21306		5	15	4	2	26
5th floor	17164	21306		5	15	4	2	26
6th floor	15259	19229		5	15	3	1	24
Mech. Penthouse	0	2787						
<b>TOTAL ABOVE GROUND</b>	<b>79969</b>	<b>132440</b>						
<b>GRAND TOTAL</b>	<b>79969</b>	<b>156596</b>	<b>66</b>	<b>15</b>	<b>45</b>	<b>11</b>	<b>5</b>	<b>66 + 76</b>
PERCENTAGE				19.7%	59.2%	14.5%	6.6%	100%

**Parking requirements:** 142 units x 0.25 = 36 cars  
 1 per 100 sqm of ota used for medical or personal services: +131 s.m. = 1 car  
**37 cars required**  
**Provided parking:** 47 cars inside  
 8 cars outside  
**55 cars provided**

**Bicycle requirements:** 142 units x 0.25 = 36 bicycles  
 21 bicycles inside  
 15 bicycles outside  
**36 bicycles provided**



I:\P\_11300\11360\CAD\11360\_A100\_Basement\_Level.dwg

D07-12-17-0039