

Distances shown on this plan are ground distances and can be converted to grid distances by multiplying by the combined scale factor of 0.99997.

Bearings are MTM grid, derived from simultaneous GPS observations from monument A to B, shown hereon, having a bearing of N55°53'10"E and are referred to the Central Meridian of MTM Zone 9 (76°30' West Longitude) NAD-83 (original).

Coordinate values are to urban accuracy in accordance with O. Reg. 216/10.

Point A Northing 5039420.80 Easting 383346.98
Point B Northing 5039455.37 Easting 383398.01

Caution: Coordinates cannot, in themselves, be used to re-establish corners or boundaries shown on this plan.

SCHEDULE

PART	PART OF BLOCK	REGISTERED PLAN	PART OF PIN
1	2	4M-1425	14501-0922

I REQUIRE THIS PLAN TO BE DEPOSITED UNDER THE LAND TITLES ACT.

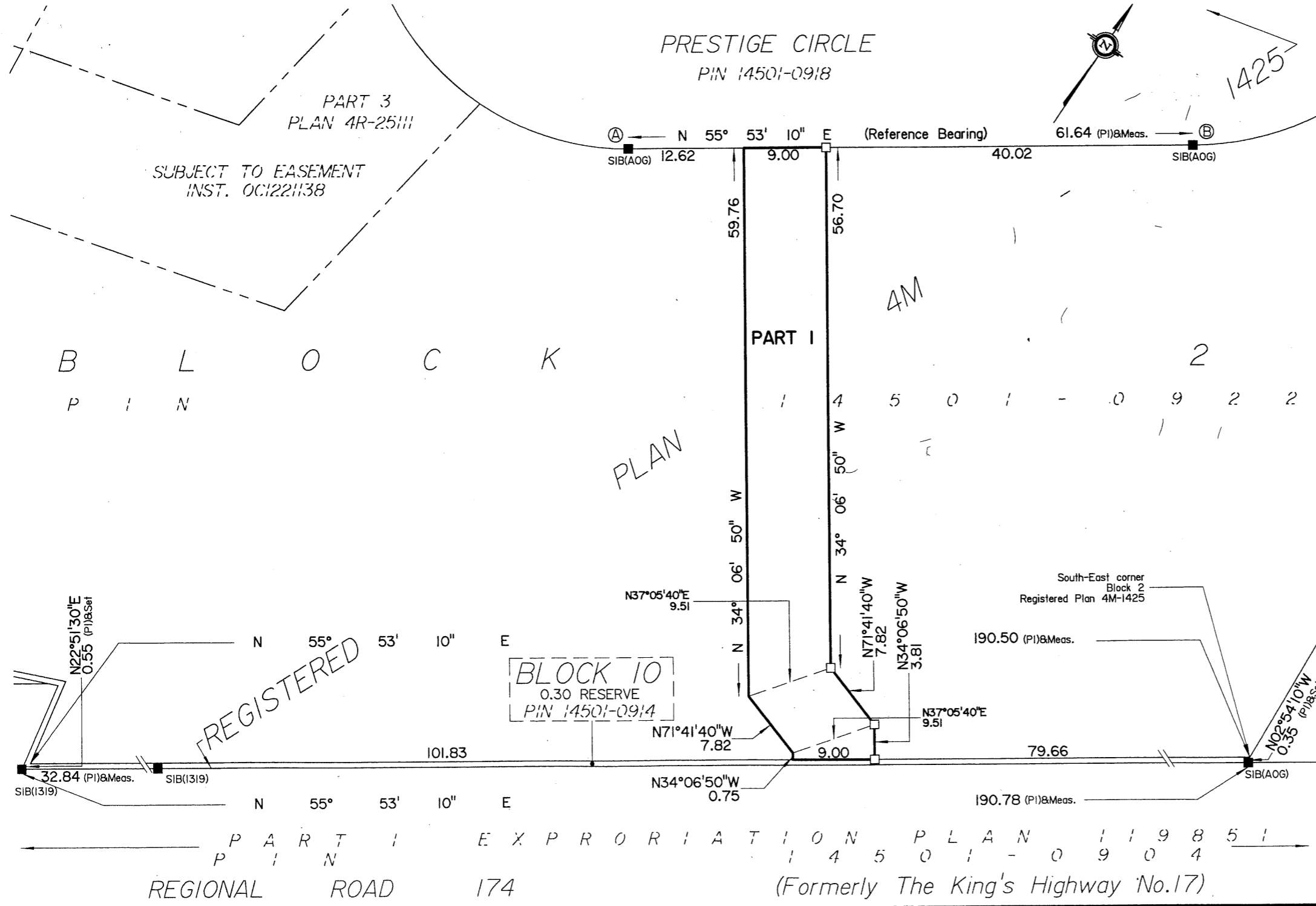
DATE: Dec. 21, 2012

E.H. Herweyer
E.H. HERWEYER
ONTARIO LAND SURVEYOR

PLAN 4R-26709

RECEIVED AND DEPOSITED
DATE: Dec. 21, 2012

F. Lamont
Representative for
LAND REGISTRAR FOR THE
LAND TITLES DIVISION OF
OTTAWA-CARLETON NO. 4.



**PLAN OF SURVEY OF
PART OF BLOCK 2
REGISTERED PLAN 4M-1425
CITY OF OTTAWA**

Surveyed by Annis, O'Sullivan, Vollebakk Ltd.
Scale 1 : 250

10 7.5 5.0 2.5 0 5 10 Metres

Metric
DISTANCES AND COORDINATES SHOWN ON THIS PLAN
ARE IN METRES AND CAN BE CONVERTED TO FEET BY
DIVIDING BY 0.3048.

Surveyor's Certificate
I CERTIFY THAT:
1. This survey and plan are correct and in accordance with the Surveys Act, the
Surveyors Act, the Land Titles Act and the regulations made under them.
2. The survey was completed on the 21st day of December, 2012.

Dec. 21, 2012
Date
E.H. Herweyer
E. H. Herweyer
Ontario Land Surveyor

Notes & Legend

- Denotes Survey Monument Planted
- " Survey Monument Found
- SIB " Standard Iron Bar
- SSIB " Short Standard Iron Bar
- IB " Iron Bar
- (WIT) " Witness
- (AOG) " Annis, O'Sullivan, Vollebakk Ltd.
- Meas. " Measured
- (P1) " Registered Plan 4M-1425

All Set Survey Monuments are SSIB

ANNIS, O'SULLIVAN, VOLLEBEKK LTD.
14 Concourse Gate, Suite 500
Nepean, Ont. K2E 7S6
Phone: (613) 727-0850 / Fax: (613) 727-1079
Email: Nepean@aovltd.com

Ontario
Land Surveyors

Job No. 12131-11 Brighl PBlk 2 4M-1425 R F

Y:\BRIGL\12131-11-Petrie's II-Phase I\FINAL\12131-11 Brighl PBlk 2 4M-1425 R F.dwg