

- GENERAL NOTES
1. All general site information and conditions compiled from survey.
 2. Do not scale this drawing.
 3. Report any discrepancies prior to commencing work. No responsibility is born by the Landscape Architect for unknown subsurface conditions.
 4. Contractor to check and verify all dimensions on site and report any errors and/or omissions.
 5. Reestablish all areas and items damaged as a result of construction activities.
 6. Drawing may not be used for construction until signed by Landscape Architect as issued for construction.
 7. The accuracy of the position of utilities is not guaranteed.
 8. Individual utility co. must be contacted for confirmation of utility existence and location prior to digging.
 9. This drawing is an instrument of service and requires the permission of the Landscape Architect for use. Copyright is reserved by Lashley + Associates corporation.

- TREE PRESERVATION, PROTECTION & REMOVAL NOTES
1. All existing trees to remain shall be protected from damage during construction by maintaining a protection fence at the critical root zone of the tree or group of trees.
 2. Storage of materials and/or equipment is prohibited within the drip line of all existing trees to remain.
 3. Contractor must comply with the Migratory Birds Convention Act (MBCA), 1994 and Regulations.
 4. Trees noted for removal must be cut outside of bird nesting season.
 5. Bird nesting season: April 1st until August 31st.

DRAFT
NOT FOR CONSTRUCTION

COPYRIGHT NOTICE: Copyright in this electronic document belongs to Moriyma & Teshima Architects. This electronic document may not be forwarded, retransmitted, downloaded or reproduced without prior or electronic, written permission of the copyright owner.

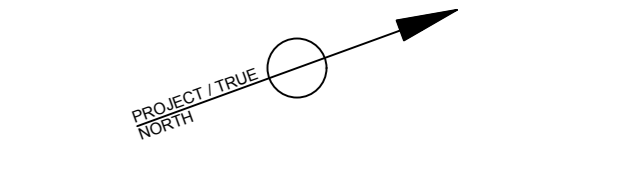
DISCLAIMER: Use of this electronic document is at the User's own risk. The User shall indemnify and save harmless the Architect and his/her employees, agents and consultants from and against all claims, losses, demands, costs and expenses (including legal fees, damages or recoveries (including amounts paid in settlement) arising by reason of, caused, or alleged to be caused, by the User's reliance on, this electronic document.

3	2019-10-10	ISSUED FOR SPA RESUBMISSION
2	2019-05-29	ISSUED FOR SPA
1	2019-05-22	ISSUED FOR COORDINATION
#	DATE	REVISION/NOTE

MORIYAMA & TESHIMA ARCHITECTS
117 George Street, Toronto, Ontario Canada M5A 2M4 416-925-4484
129 Murray Street, Unit 3, Ottawa, Ontario Canada K1N 5M5 613-562-2368

CS&P Architects
2345 Yonge Street, Suite 200, Toronto, Ontario M4P2E5 416-462-0002

LASHLEY + ASSOCIATES
LANDSCAPE ARCHITECTURE AND SITE ENGINEERING



Do not scale drawings. The contractor shall check and verify all dimensions and report any errors or omissions to the architect before commencing or proceeding with any work. All drawings remain the property of the architect.
Copyright (c) 2019
Client:

CITY OF OTTAWA

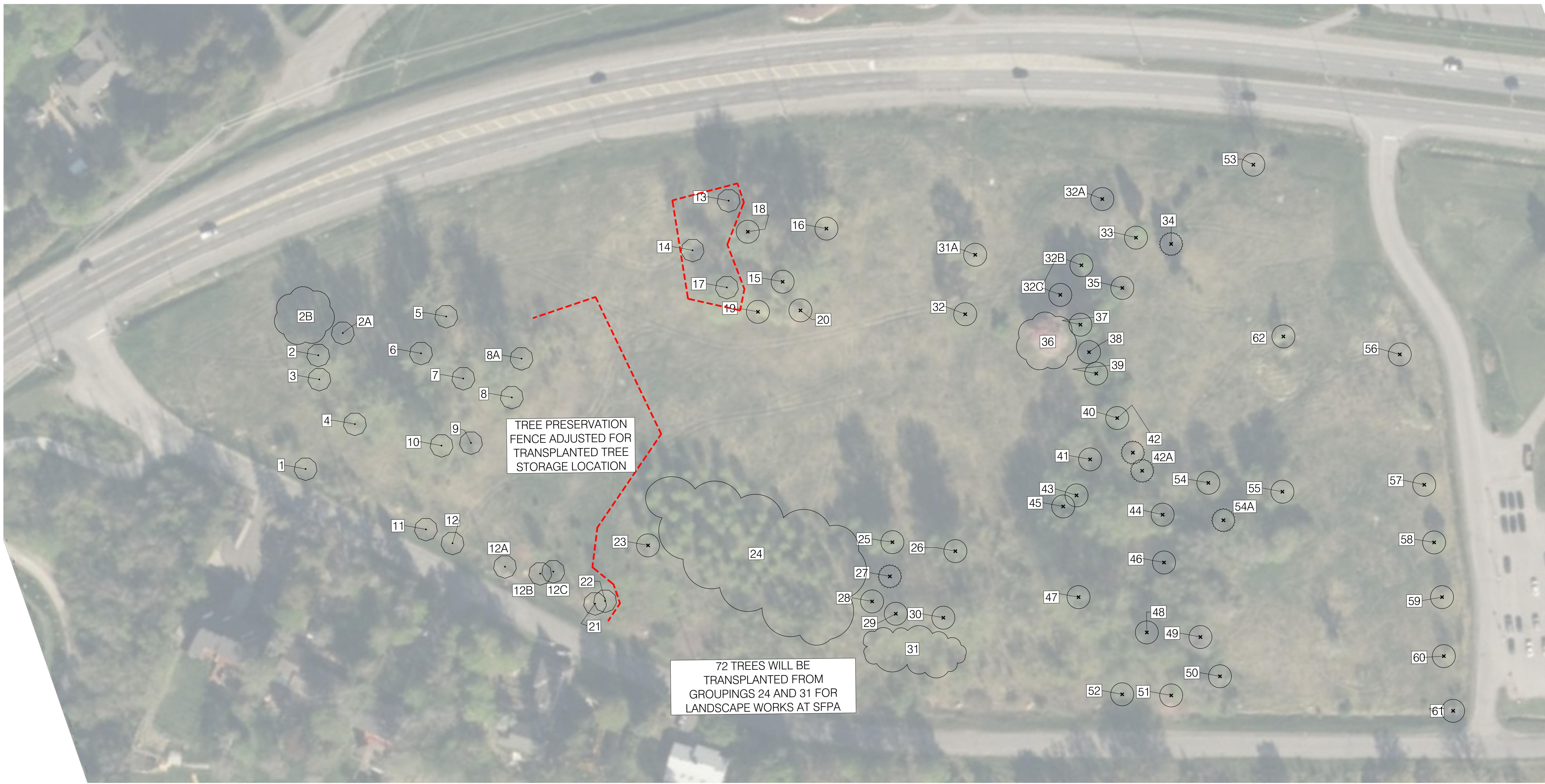
Project:
SOUTH CAMPUS PHASE A
3555 PRINCE OF WALES DR. OTTAWA ONTARIO

Title:
PRE-DEVELOPMENT
VEGETATION
MAP

Scale:	AS SHOWN	Sheet No.:	
Date:	04/17/19		
Job No.:	18701		
Drawn By:	SG		
Checked By:	RP		
Approved By:	RP		

TP-1

CITY PLAN # 17973
DOT-12-19-0090



1 PRE-DEVELOPMENT LANDSCAPE PLAN
(TCP-1)



NO.	SPECIES	DBH (CM)	HEALTH	COMMENTS
15	Burr Oak/ <i>Quercus macrocarpa</i>	11	Good	
16	Willow/ <i>Salix</i> sp.	130	Fair	
18	Balsam Poplar/ <i>Populus balsamifera</i>	98	Fair	
19	Willow/ <i>Salix</i> sp.	95	Fair	
20	Balsam Poplar/ <i>Populus balsamifera</i>	96	Fair	
22	Black Walnut/ <i>Juglans nigra</i>	10	Good	
23	White Pine/ <i>Pinus strobus</i>	8	Good	
24	White Pine/ <i>Pinus strobus</i> Basswood/ <i>Tilia americana</i> White Cedar/ <i>Thuja occidentalis</i> Hackberry/ <i>Celtis occidentalis</i> Sugar Maple/ <i>Acer saccharum</i> White Birch/ <i>Betula papyrifera</i> Eastern Red Oak/ <i>Quercus rubra</i> Red Pine/ <i>Pinus resinosa</i> Burr Oak/ <i>Quercus macrocarpa</i>	8-12	Fair / Good	+/- 65 TREES
25	Balsam Poplar/ <i>Populus balsamifera</i>	90	Good	
26	Balsam Poplar/ <i>Populus balsamifera</i>	85	Good	
27	Larch/ <i>Larix laricina</i>	10	Good	

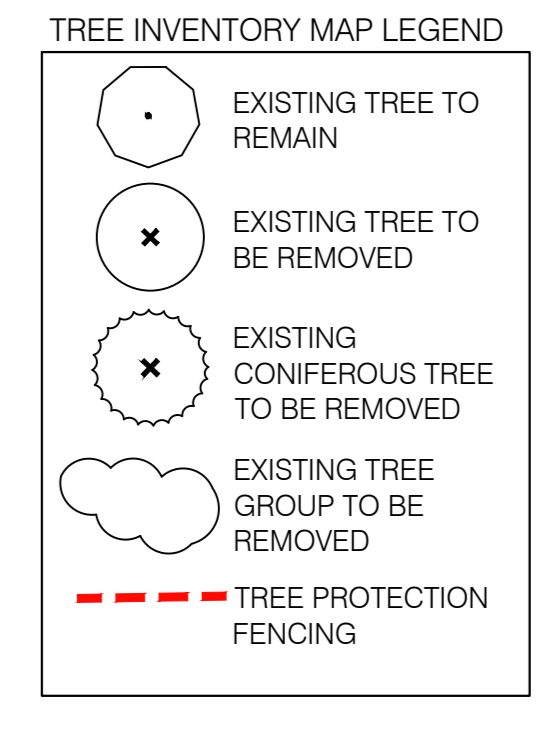
28	Silver Maple/ <i>Acer saccharinum</i>	56	Good	CROTCH AT 1.6m
29	Balsam Poplar/ <i>Populus balsamifera</i>	115	Good	
30	Balsam Poplar/ <i>Populus balsamifera</i>	100	Good	
31	Basswood/ <i>Tilia americana</i> Eastern Red Oak/ <i>Quercus rubra</i>	5-12	Fair / Good	+/- 12-15 TREES
31 A	Willow/ <i>Salix</i> sp.	110	Fair	
32	Red Maple/ <i>Acer rubrum</i>	52	Fair	
32 A	Red Maple/ <i>Acer rubrum</i>	30	Good	
32 B	Red Maple/ <i>Acer rubrum</i>	28	Fair	
32 C	Red Maple/ <i>Acer rubrum</i>	37	Good	
33	Sugar Maple/ <i>Acer saccharum</i>	30	Good	
34	Colorado Blue Spruce/ <i>Picea pungens</i> 'Glauca'	37	Good	
35	Black Walnut/ <i>Juglans nigra</i>	17	Good	
36	Apple/ <i>Malus</i>	10-25	Fair / Good	+/- 4 TREES
37	Silver Maple/ <i>Acer saccharinum</i>	56	Good	
38	Silver Maple/ <i>Acer saccharinum</i>	41	Good	

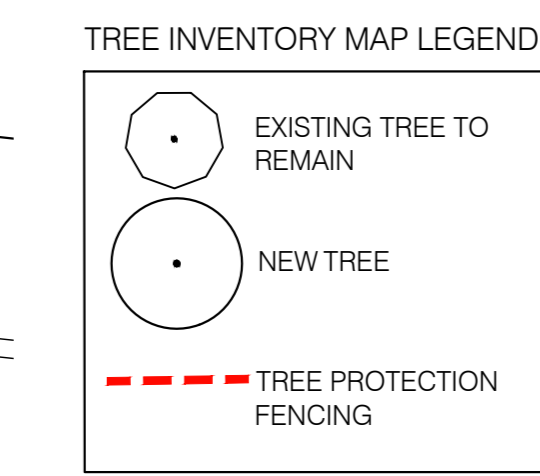
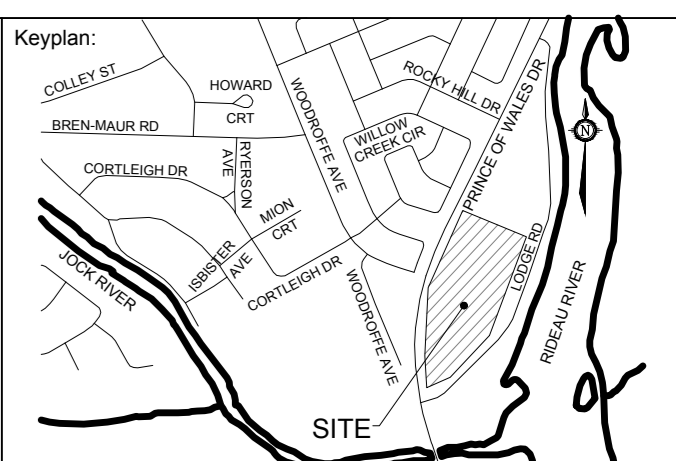
39	Red Maple/ <i>Acer rubrum</i>	15-10	Good	DOUBLE STEMMED
40	Silver Maple/ <i>Acer saccharinum</i>	39	Good	
41	Silver Maple/ <i>Acer saccharinum</i>	56	Good	
42	Red Pine/ <i>Pinus resinosa</i>	32	Good	
42 A	Red Pine/ <i>Pinus resinosa</i>	30	Good	
43	Silver Maple/ <i>Acer saccharinum</i>	39, 31	Good	Double Stemmed
44	Silver Maple/ <i>Acer saccharinum</i>	72	Good	
45	Silver Maple/ <i>Acer saccharinum</i>	40	Good	
46	Balsam Poplar/ <i>Populus balsamifera</i>	65	Good	
47	Balsam Poplar/ <i>Populus balsamifera</i>	93	Good	
48	Balsam Poplar/ <i>Populus balsamifera</i>	102	Good	
49	Red Maple/ <i>Acer rubrum</i>	45	Good	
50	Kentucky Coffee Tree/ <i>Gymnocladus dioica</i>	6	Good	
51	Kentucky Coffee Tree/ <i>Gymnocladus dioica</i>	10	Good	
52	Kentucky Coffee Tree/ <i>Gymnocladus dioica</i>	8	Good	

53	Ash/ <i>Fraxinus</i> sp.	30	Dead	DEAD
54	Red Maple/ <i>Acer rubrum</i>	37	Good	
54 A	Red Pine/ <i>Pinus resinosa</i>	35	Good	
55	Silver Maple/ <i>Acer saccharinum</i>	95	Good	
56	Sugar Maple/ <i>Acer saccharum</i>	16	Fair	
57	Red Maple/ <i>Acer rubrum</i>	22	Poor	DIE BACK, WOUND IN TRUNK
58	Sugar Maple/ <i>Acer saccharum</i>	20	Good	
59	Sugar Maple/ <i>Acer saccharum</i>	23	Good	
60	Sugar Maple/ <i>Acer saccharum</i>	25	Good	HEALED OVER WOUND
61	Silver Maple/ <i>Acer saccharinum</i>	22	Good	
62	Willow/ <i>Salix</i> sp.	8-23	Fair	10 STEM

NO.	SPECIES	DBH (CM)	HEALTH	COMMENTS
1	Silver Maple/ <i>Acer saccharinum</i>	16	Good	
2	Balsam Poplar/ <i>Populus balsamifera</i>	85	Good	
2 A	Balsam Poplar/ <i>Populus balsamifera</i>	21	Good	
2 B	White Spruce/ <i>Picea glauca</i> White Birch/ <i>Betula papyrifera</i> Balsam Poplar/ <i>Populus balsamifera</i>	6-10	Fine / Good	+/- 8-10 TREES
3	Balsam Poplar/ <i>Populus balsamifera</i>	96	Good	
4	Balsam Poplar/ <i>Populus balsamifera</i>	100	Good	
5	Balsam Poplar/ <i>Populus balsamifera</i>	96	Fair	DIE BACK
6	Basswood/ <i>Tilia americana</i>	12	Good	
7	Balsam Poplar/ <i>Populus balsamifera</i>	98	Good	
8	Balsam Poplar/ <i>Populus balsamifera</i>	98	Fair	SENESCING
8 A	Balsam Poplar/ <i>Populus balsamifera</i>	21	Good	
9	Black Walnut/ <i>Juglans nigra</i>	15	Fair	BROKEN LEADER
10	Balsam Poplar/ <i>Populus balsamifera</i>	98	Good	
11	Silver Maple/ <i>Acer saccharinum</i>	13	Good	
12	Silver Maple/ <i>Acer saccharinum</i>	14	Good	
12 A	Silver Maple/ <i>Acer saccharinum</i>	14	Good	

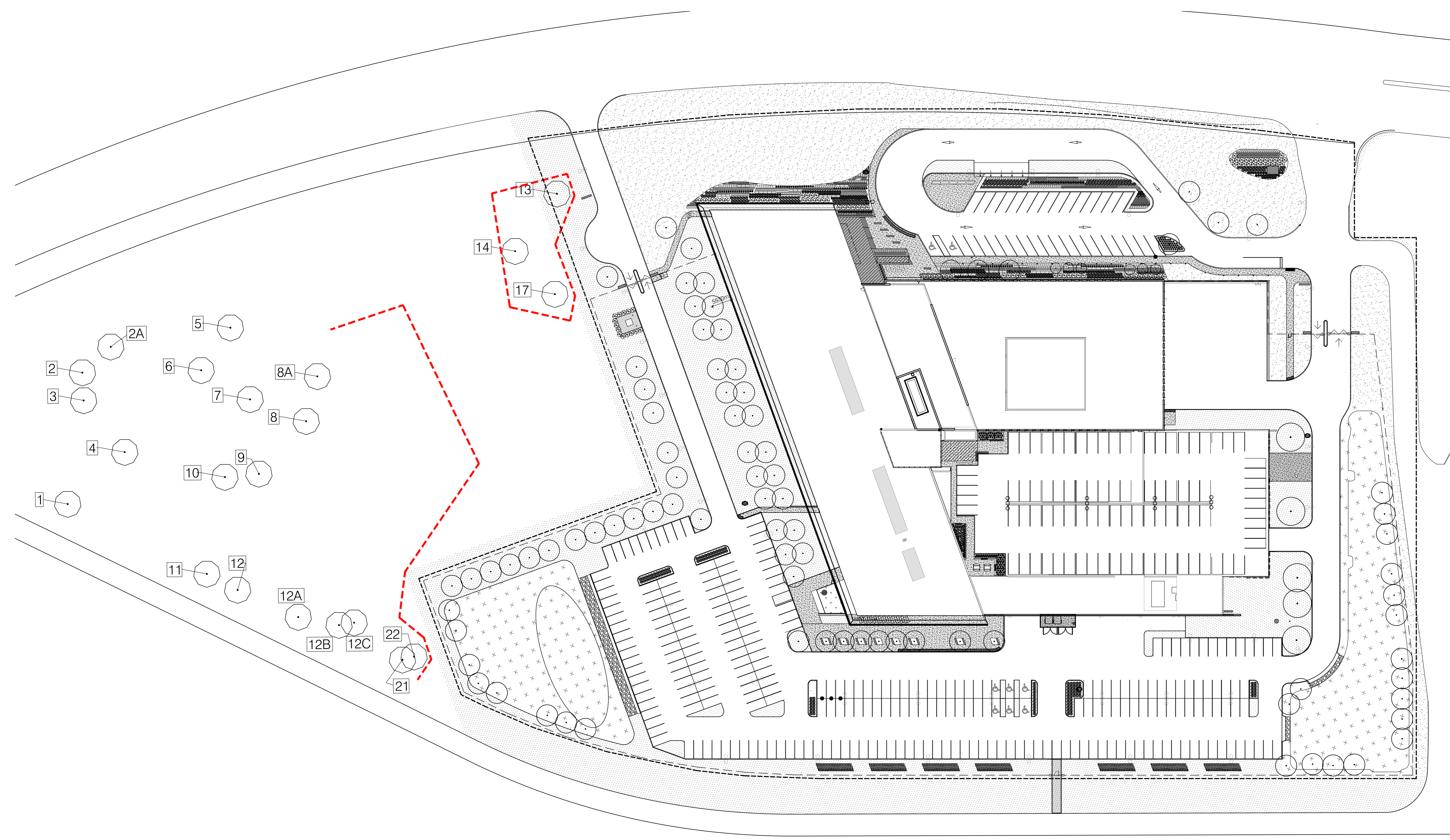
12 B	Silver Maple/ <i>Acer saccharinum</i>	16	Fair	
12 C	Manitoba Maple/ <i>Acer negundo</i>	16	Poor	
13	Red Maple/ <i>Acer rubrum</i>	30	Good	
14	Silver Maple/ <i>Acer saccharinum</i>	42	Fair	
17	Silver Maple/ <i>Acer saccharum</i>	64	Poor	POOR FORM + WATER SPIROUITS
21	Manitoba Maple/ <i>Acer negundo</i>	22	Fair	





- GENERAL NOTES**
- All general site information and conditions compiled from survey.
 - Do not scale this drawing.
 - Report any discrepancies prior to commencing work. No responsibility is born by the Landscape Architect for unknown subsurface conditions.
 - Contractor to check and verify all dimensions on site and report any errors and/or omissions.
 - Recreate all areas and items damaged as a result of construction activities.
 - Drawing may not be used for construction until signed by Landscape Architect as issued for construction.
 - The accuracy of the position of utilities is not guaranteed.
 - Individual utility co. must be contacted for confirmation of utility existence and location prior to digging.
 - This drawing is an instrument of service and requires the permission of the Landscape Architect for use. Copyright is reserved by Lashley + Associates corporation.

- TREE PRESERVATION, PROTECTION & REMOVAL NOTES**
- All existing trees to remain shall be protected from damage during construction by maintaining a protection fence at the critical root zone of the tree or group of trees.
 - Storage of materials and/or equipment is prohibited within the drip line of all existing trees to remain.
 - Contractor must comply with the Migratory Birds Convention Act (MBCA), 1994 and Regulations.
 - Trees noted for removal must be cut outside of bird nesting season.
 - Bird nesting season: April 1st until August 31st.



**DRAFT
NOT FOR CONSTRUCTION**

COPYRIGHT NOTICE - Copyright in this electronic document belongs to MoriYama & Teshima Architects. This electronic document may not be forwarded to others, transmitted, downloaded or reproduced whether print or electronic, without the express, written permission of the copyright owner.

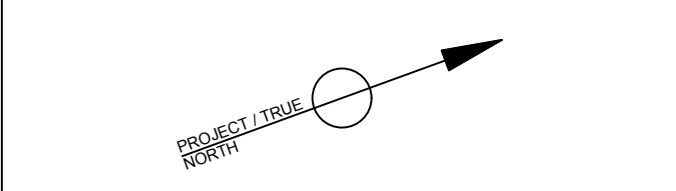
DISCLAIMER - Use of this electronic document is at the User's own risk. The User shall indemnify and save harmless the Architect and his/her employees, agents and consultants from and against all claims, losses, demands, costs and expenses (including legal fees, damages or recoveries (including amounts paid in settlement) arising by reason of, caused, or alleged to be caused, by the User's reliance on, this electronic document.

#	DATE	REVISION/NOTE
3	2019-10-10	ISSUED FOR SPA RESUBMISSION
2	2019-05-29	ISSUED FOR SPA
1	2019-05-22	ISSUED FOR COORDINATION

MORIYAMA & TESHIMA ARCHITECTS
 117 George Street, Toronto, Ontario Canada M5A 2M4 416-925-4884
 109 Murray Street, Unit 3, Ottawa, Ontario Canada K1N 8M5 613-562-2368

CS&P Architects
 2345 Yonge Street, Suite 200, Toronto, Ontario M4P2E5 416-462-0002

LASHLEY+ASSOCIATES
 LANDSCAPE ARCHITECTURE AND SITE ENGINEERING



Do not scale drawings. The contractor shall check and verify all dimensions and report any errors or omissions to the architect before commencing or proceeding with any work. All drawings remain the property of the architect.
 Copyright (c) 2019

Client:
CITY OF OTTAWA

Project:
SOUTH CAMPUS PHASE A
 3555 PRINCE OF WALES DR. OTTAWA ONTARIO

Title:
POST-DEVELOPMENT EXISTING VEGETATION MAP

Scale: AS SHOWN Sheet No.:
 Date: 04/17/19 Job No.: 18701
 Drawn By: SG Checked By: RP Approved By: RP

TP-2

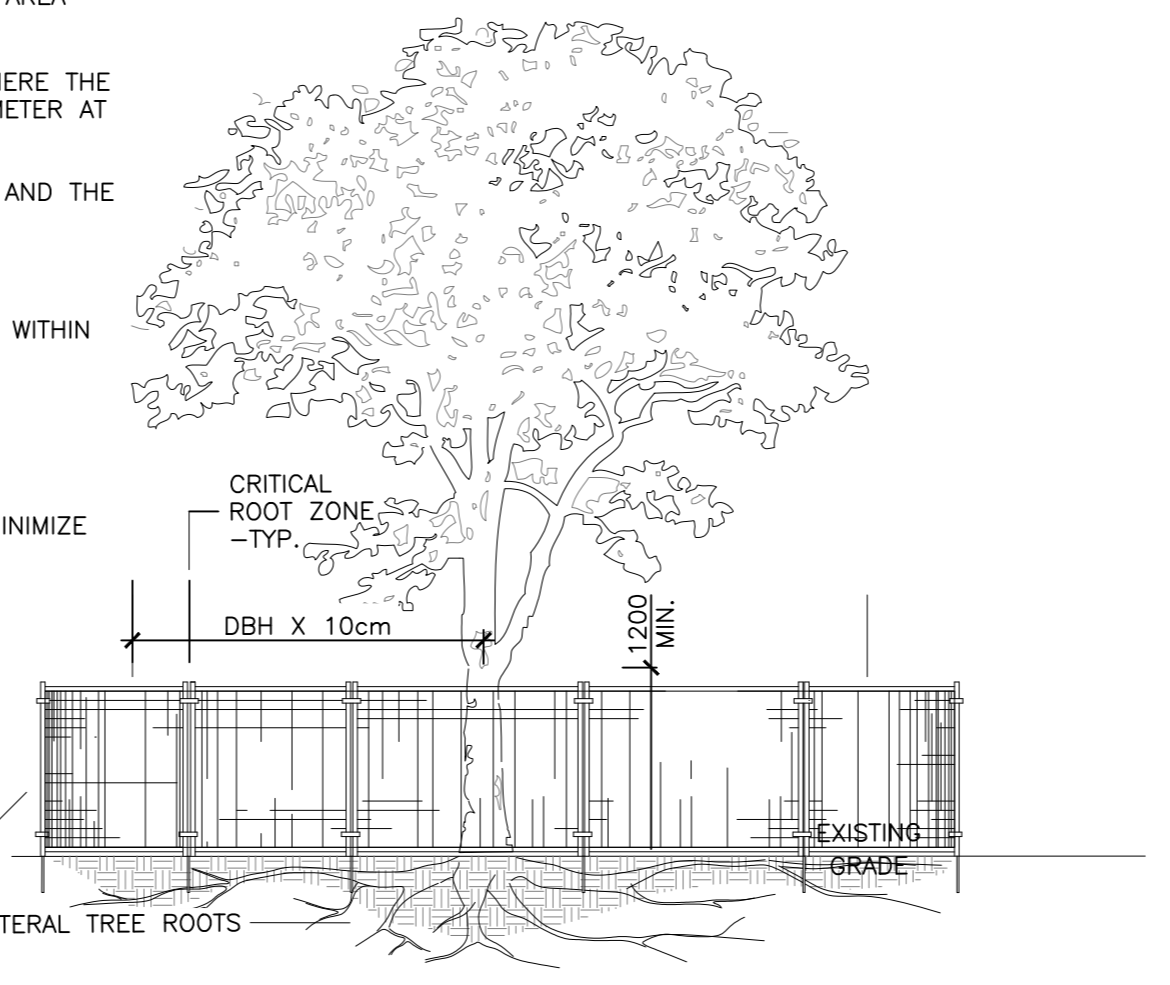
CITY PLAN # 17973
 DOT-12-19-0090

1 TCP-2 POST-DEVELOPMENT EXISTING VEGETATION MAP

NO.	SPECIES	DBH (CM)	HEALTH	COMMENTS
1	Silver Maple/ Acer saccharinum	16	Good	
2	Balsam Poplar/ Piptropus balsamifera	85	Good	
2A	Balsam Poplar/ Piptropus balsamifera	21	Good	
2B	White Spruce/ Picea glauca	6-10	Fine / Good	+/- 8-10 TREES
3	Balsam Poplar/ Piptropus balsamifera	96	Good	
4	Balsam Poplar/ Piptropus balsamifera	100	Good	
5	Balsam Poplar/ Piptropus balsamifera	96	Fair	DIE BACK
6	Basswood/ Tilia americana	12	Good	
7	Balsam Poplar/ Piptropus balsamifera	98	Good	
8	Balsam Poplar/ Piptropus balsamifera	98	Fair	SENESCING
8A	Balsam Poplar/ Piptropus balsamifera	21	Good	
9	Black Walnut/ Juglans nigra	15	Fair	BROKEN LEADER
10	Balsam Poplar/ Piptropus balsamifera	98	Good	
11	Silver Maple/ Acer saccharinum	13	Good	
12	Silver Maple/ Acer saccharinum	14	Good	
12A	Silver Maple/ Acer saccharinum	14	Good	

12B	Silver Maple/ Acer saccharinum	16	Fair	
12C	Manitoba Maple/ Acer negundo	16	Poor	
13	Red Maple/ Acer rubrum	30	Good	
14	Silver Maple/ Acer saccharinum	42	Fair	
17	Silver Maple/ Acer saccharinum	64	Poor	POOR FORM - WATER SPROUTS
21	Manitoba Maple/ Acer negundo	22	Fair	

- NOTES**
- THE FOLLOWING PROTECTION MEASURES MUST BE IMPLEMENTED FOR RETAINED TREES, BOTH WITHIN THE WORK AREA AND ON ADJACENT PARCELS.
- UNDER THE GUIDANCE OF AN ARBORIST, ERECT A FENCE AT THE CRITICAL ROOT ZONE (CRZ) OF TREES WHERE THE CRZ IS ESTABLISHED AS BEING 10 CENTIMETERS FROM THE TRUNK FOR EVERY CENTIMETER OF TRUNK DIAMETER AT BREAST HEIGHT.
 - TREE PROTECTION SHALL BE ERECTED TO PROVIDE A CONTINUOUS BARRICADE BETWEEN DESIGNATED TREES AND THE WORK AREA PRIOR TO CONSTRUCTION.
 - TUNNEL OR BORE WHEN DIGGING WITHIN THE CRZ OF A TREE.
 - ENSURE ALL EQUIPMENT AND CONSTRUCTION RELATED MATERIAL ARE NOT PLACED OR TEMPORARILY STORED WITHIN THE CRZ.
 - ENSURE EXHAUST FUMES FROM ALL EQUIPMENT ARE NOT DIRECTED TOWARDS ANY TREE'S CANOPY.
 - FLOODING OR DEPOSITION OF SEDIMENT SHALL BE PREVENTED WHERE TREES ARE LOCATED.
 - ALL DISTURBED ROOT SYSTEMS SHALL BE EXPOSED AND BACKFILLED IN ONE CONTINUOUS OPERATION TO MINIMIZE DESICCATION.
 - EXPOSED ROOTS SHALL BE KEPT CONTINUOUSLY MOIST DURING EXCAVATION.
 - REMOVE BROKEN AND DAMAGED ROOTS WITH SHARP PRUNING SHEARS.
 - THE TREE PROTECTION FENCE IS TEMPORARY, SHALL BE MAINTAINED AT ALL TIMES DURING CONSTRUCTION OPERATIONS, AND SHALL BE REMOVED UPON COMPLETION OF WORK, WHEN AGREED TO BY THE CONTRACT ADMINISTRATOR AND LANDSCAPE ARCHITECT.



2 TCP-2 TREE PROTECTION FENCE

1:50

A0

FOR REFERENCE ONLY - NOT FOR CONSTRUCTION