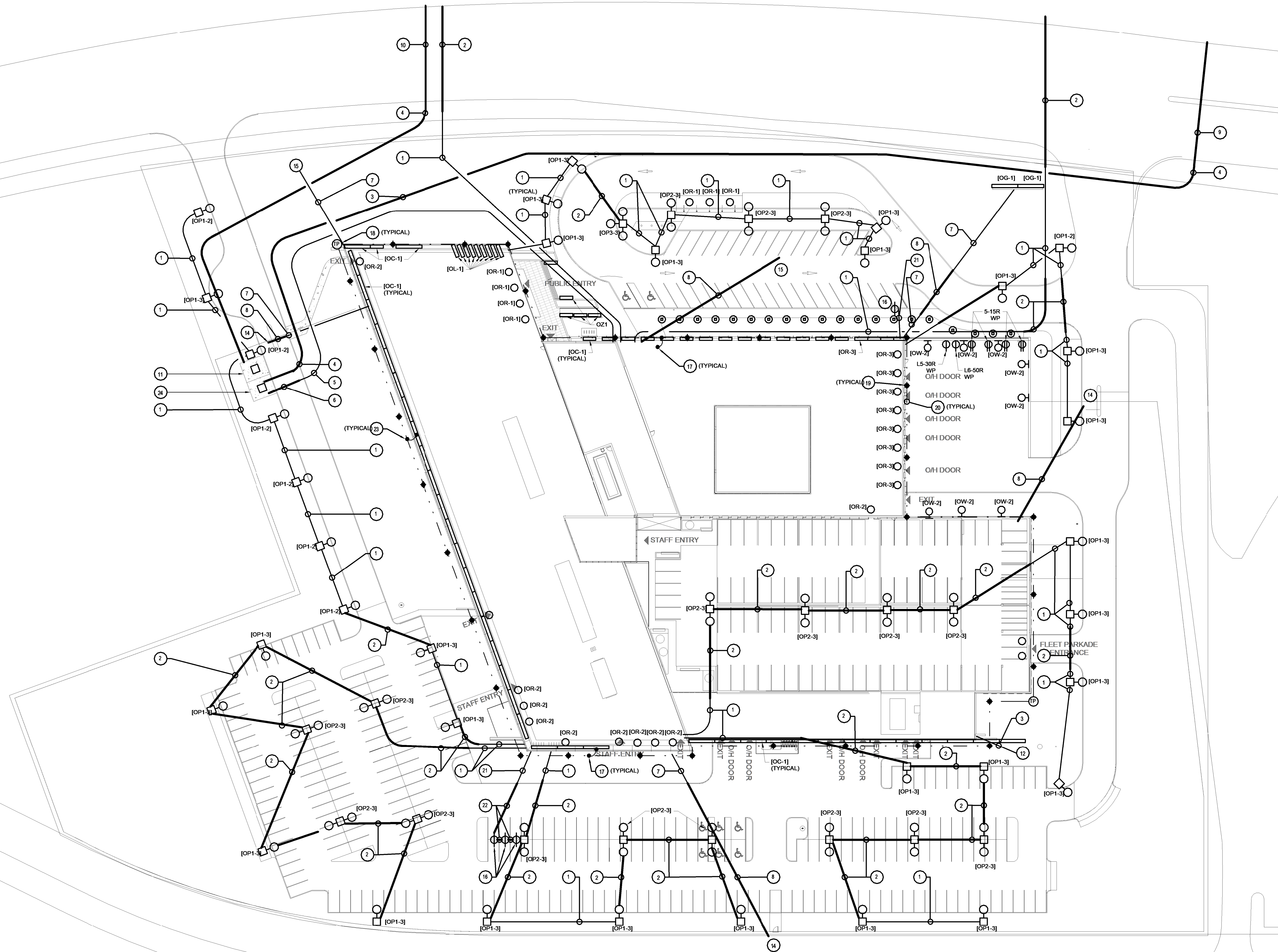
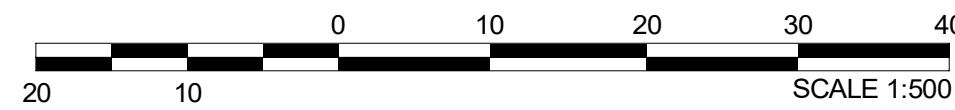


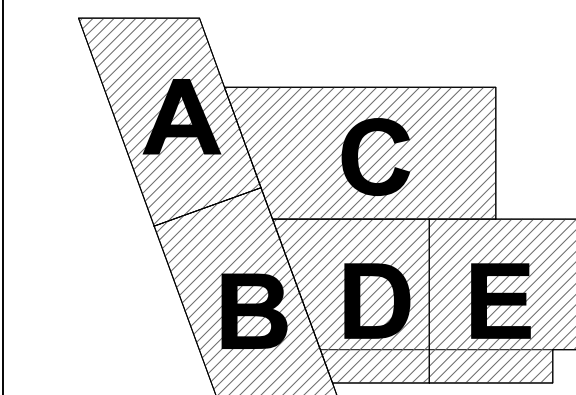
1 ELECTRICAL - SITE PLAN AND SERVICES



NOTES

- 2 x 103mm DIRECT BURIED DUCT BANK
REFER TO DETAIL 8/E0-3.
- 2 x 103mm CONCRETE ENCASED DUCT BANK
REFER TO DETAIL 10/E0-3.
- 4 x 103mm DIRECT BURIED DUCT BANK
REFER TO DETAIL 8/E0-3.
- 4 x 103mm CONCRETE ENCASED DUCT BANK
REFER TO DETAIL 11/E0-3.
- 6 x 103mm DIRECT BURIED DUCT BANK
REFER TO DETAIL 7/E0-3.
- 6 x 103mm CONCRETE ENCASED DUCT BANK
REFER TO DETAIL 11/E0-3.
- 1 x 103mm DIRECT BURIED DUCT BANK
REFER TO DETAIL 4/E0-3.
- 1 x 103mm CONCRETE ENCASED BURIED DUCT BANK
REFER TO DETAIL 8/E0-3.
- EXISTING HYDRO OTTAWA DUCT BANK. CONFIRM
LOCATION WITH UTILITY.
- HYDRO OTTAWA TO COMPLETE ALL CIVIL UTILITY
WORK IN THE PUBLIC ROADWAY. CONTRACTOR'S
SCOPE OF WORK TO START AT THE PROPERTY
LINE.
- REFER TO DETAILS 1, 2 & 3 ON DRAWING E-03 FOR
TRANSFORMER BASE, BOLLARDS AND GROUNDING.
- CONNECTION TO CIVIL PUMPING STATION. COORDINATE
LOCATION OF DUCTS WITH CIVIL DETAILS.
- PROVIDE WEATHERPROOF JUNCTION BOX AT END OF
CONDUIT FOR FUTURE CONNECTION OF ARTWORK LIGHTING
LINE.
- CONNECTION TO FENCE COLLISION.
- CONNECTION TO COLLISION REPORTING CENTER.
- CONNECTION FOR CAR CHARGING STATION.
- PROVIDE GROUND CONNECTION FROM PERIMETER
GROUND LOOP TO STRUCTURAL STEEL WITH GREEN
INSULATED #20 COPPER CONDUCTOR AND STRUCTURAL
STEEL CONNECTOR. TYPICAL FOR ALL BUILDING STEEL
COLUMNS AT BUILDING PERIMETER.
- PROVIDE GROUND ROD TEST PIT AS INDICATED.
- PROVIDE 19mm x 300mm COPPER CLAD GROUNDING
CONNECTED TO BUILDING PERIMETER LOOP AS INDICATED.
- PROVIDE #20 BARE COPPER CONDUCTOR, DIRECT BURIED
ALONG PERIMETER OF BUILDING.
- 2 x 53mm DIRECT BURIED DUCT BANK
REFER TO DETAIL 8/E0-3.
- 2 x 53mm CONCRETE ENCASED DUCT BANK
REFER TO DETAIL 13/E0-3.
- PROVIDE GROUNDING CONNECTION FROM PERIMETER
GROUND LOOP TO STRUCTURAL PILE. PROVIDE CONNECTION
AT 5 LOCATIONS, ON EACH SIDE (SOUTH, NORTH, WEST, EAST)
AT BUILDING.
- VISTA SWITCH PROVIDED BY HYDRO OTTAWA.

Keyplan:



DRAFT
NOT FOR CONSTRUCTION

D	2019-10-10	ISSUED FOR SPA
C	2019-10-03	ISSUED FOR 66% DESIGN
B	2019-05-31	ISSUED FOR 33% DESIGN
A	2019-05-29	ISSUED FOR SPA

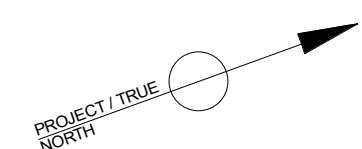
MORIYAMA & TESHIMA ARCHITECTS
march.com

117 George Street, Toronto, Ontario Canada M5A 2N4 416-925-4484
109 Murray Street, Unit 3 Ottawa, Ontario Canada K1N 5M5 613-862-2908

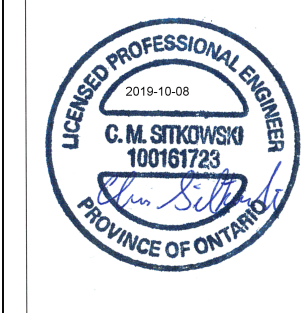
CS&P Architects
csparch.com

2345 Yonge Street, Suite 200, Toronto, Ontario M4P2E5 416-462-5002

Mechanical/Electrical Engineers:
1960 Robertson Road, suite 100
Ottawa (Ontario) K2H 5B9
613-596-6454
www.bpa.ca



Stamp:



Do not scale drawings. The contractor shall check and verify all dimensions
and report any errors or omissions to the architect before commencing or
proceeding with any work. All drawings remain the property of the architect.

Copyright (C) 2019

Owner / Developer:
CITY OF OTTAWA

Applicant:

Project:

SOUTH FACILITY PHASE A
3505 Prince of Wales Drive

Title:

SITE PLAN AND SERVICES

Scale: 1 : 500
Date: 05/07/19
Job No.: 8018-005
Drawn By: T.C./S.S.
Checked By: M.M.
Approved By: C.M.S.

Sheet No.:

E-0-2

