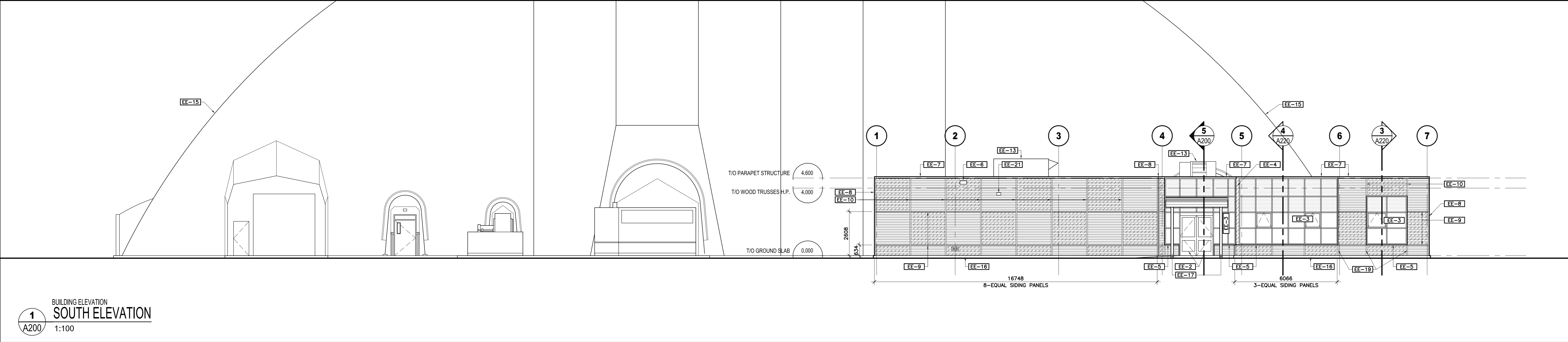
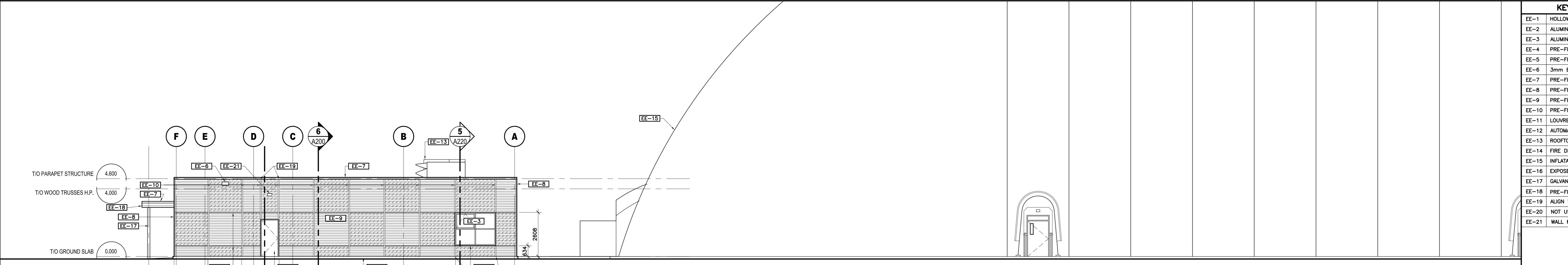


MATERIALS LEGEND

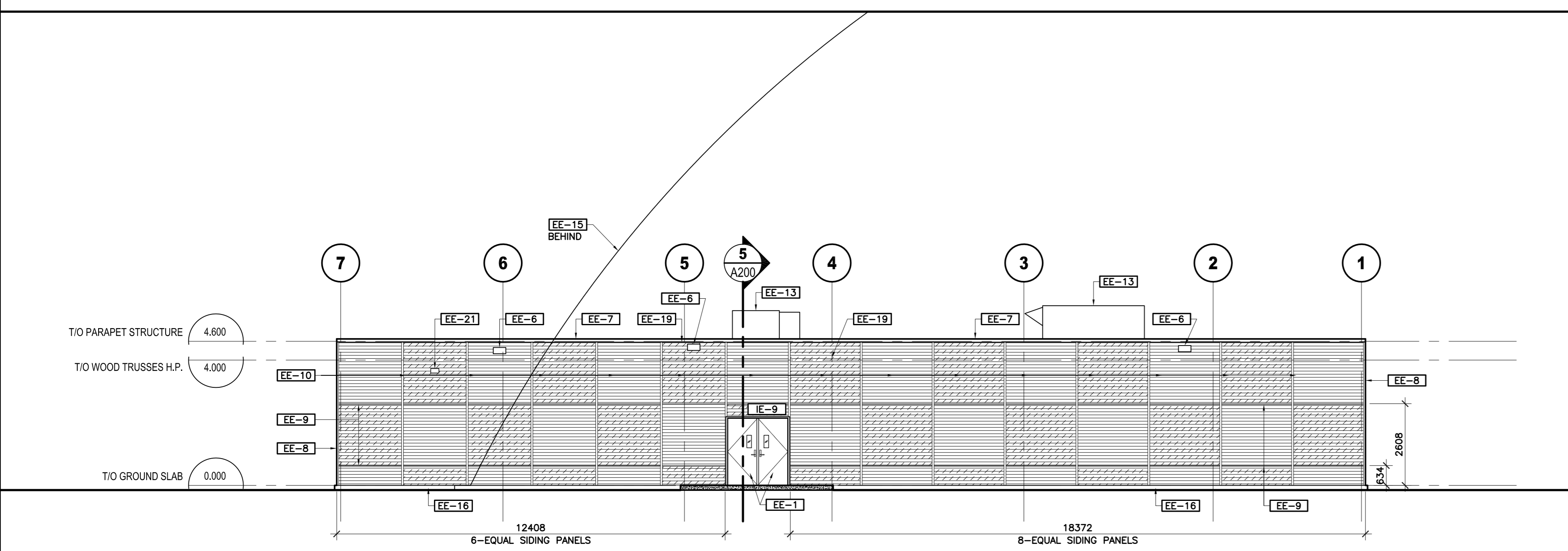
	PRE-FINISHED METAL SIDING INSTALLED HORIZONTALLY FIELD COLOUR
	PRE-FINISHED METAL SIDING INSTALLED HORIZONTALLY ACCENT COLOUR
	INSULATED SPANDREL GLAZING WITH INSULATED BACK PAN BEHIND IN ALUMINUM CURTAIN WALL
	VISION INSULATED GLASS UNITS IN ALUMINUM CURTAIN WALL
	PERFORMED ALUMINUM
	GYPSUM BOARD, PAINTED
	CONCRETE BLOCK, PAINTED



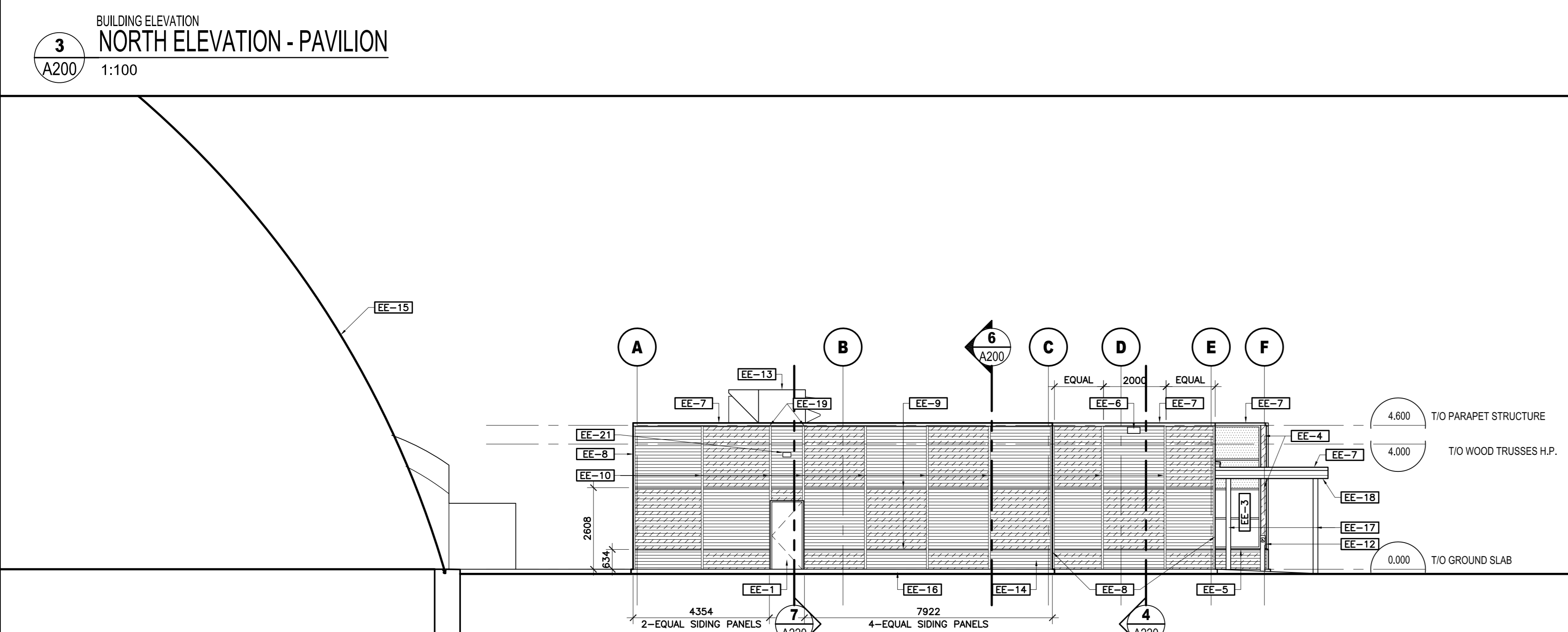
BUILDING ELEVATION
 SOUTH ELEVATION
 A200 1:100



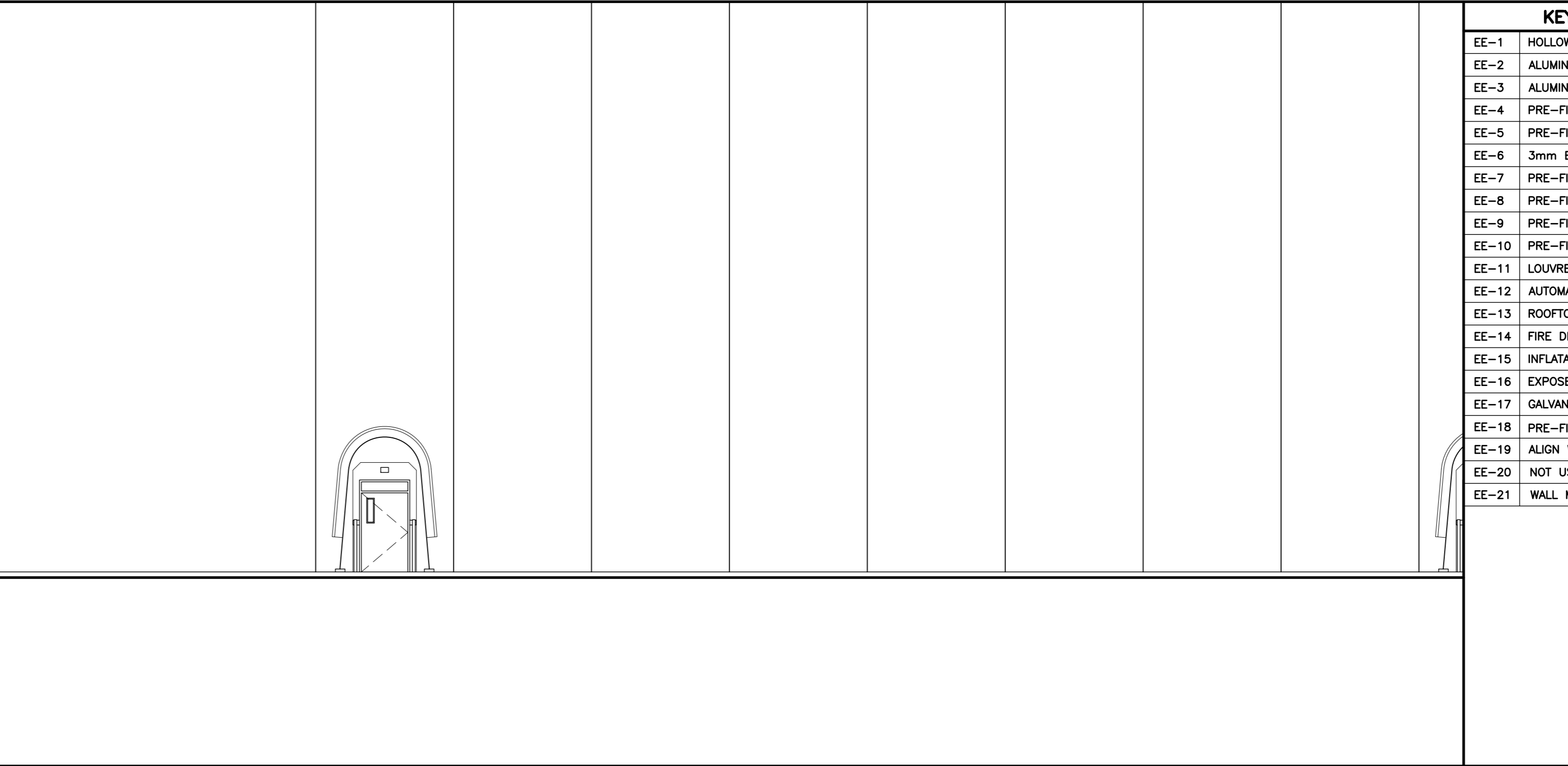
BUILDING ELEVATION
 EAST ELEVATION
 A200 1:100



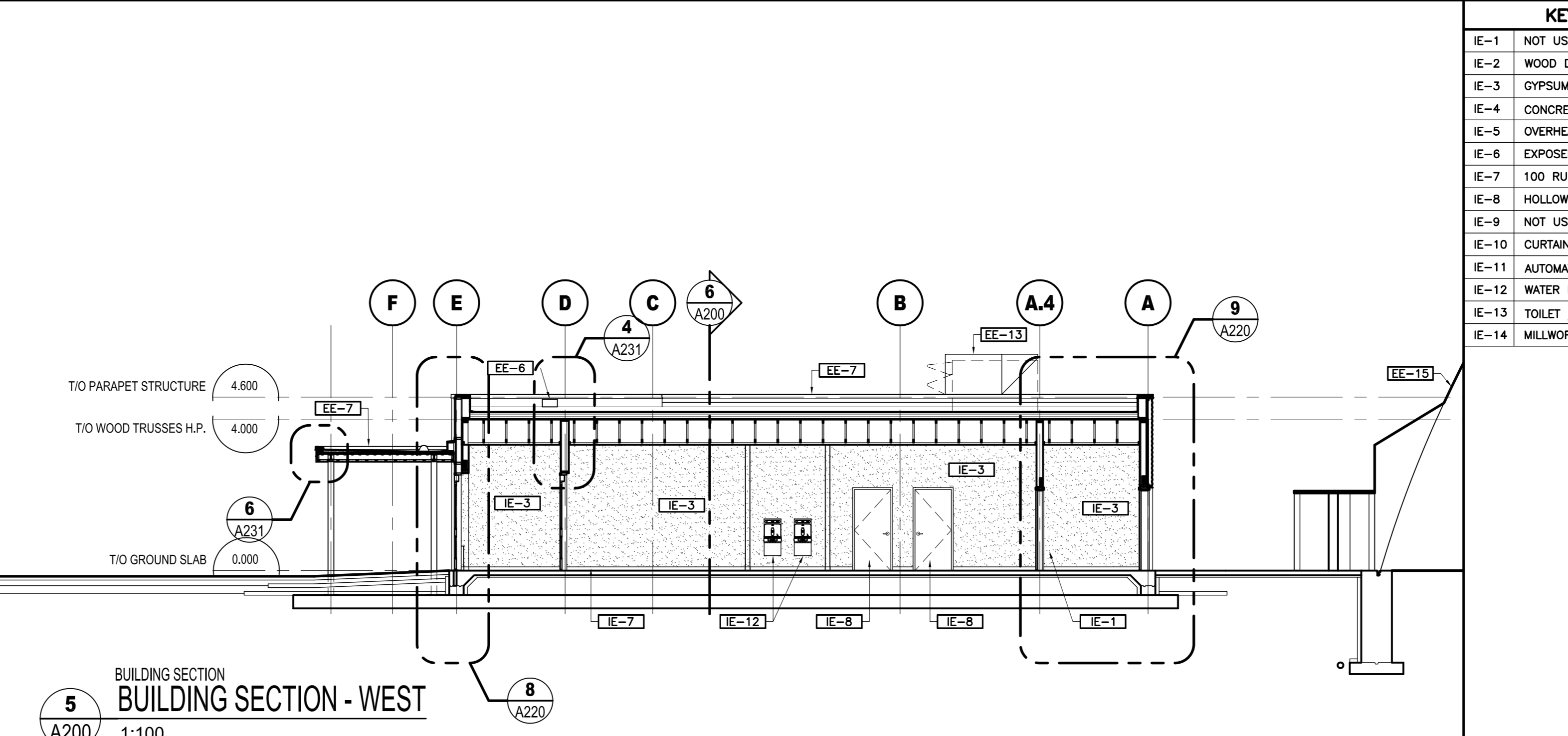
BUILDING ELEVATION
 NORTH ELEVATION - PAVILION
 A200 1:100



BUILDING ELEVATION
 WEST ELEVATION - PAVILION
 A200 1:100



BUILDING SECTION
 WEST
 A200 1:100



BUILDING SECTION
 NORTH
 A200 1:100

KEY NOTES - EXTERIOR ELEVATION

- EE-1 HOLLOW METAL DOOR WITH PRESSED METAL FRAME, PAINTED
- EE-2 ALUMINUM SWING DOOR
- EE-3 ALUMINUM CURTAIN WALL SYSTEM
- EE-4 PRE-FINISHED ALUMINUM CLOSURE
- EE-5 PRE-FINISHED METAL WINDOW OR LOUVRE SILL
- EE-6 3mm BRAKE FORMED ALUMINUM ROOF OVERFLOW SCUPPER
- EE-7 PRE-FINISHED METAL CAP FLASHING
- EE-8 PRE-FINISHED METAL CORNER TRIM
- EE-9 PRE-FINISHED METAL HORIZONTAL DIVIDER TRIM
- EE-10 PRE-FINISHED METAL VERTICAL DIVIDER TRIM
- EE-11 LOUVRE, REFER TO MECHANICAL DRAWINGS
- EE-12 AUTOMATIC DOOR OPERATOR (ADO)
- EE-13 ROOFTOP UNIT, REFER TO MECHANICAL DRAWINGS
- EE-14 FIRE DEPARTMENT CONNECTION
- EE-15 INFLATABLE STRUCTURE DOME
- EE-16 EXPOSED FOUNDATION WALL - ARCHITECTURAL CONCRETE FINISH
- EE-17 GALVANIZED STEEL COLUMN, PAINTED
- EE-18 PRE-FINISHED METAL FASCIA C/W DRIP EDGE
- EE-19 ALIGN WITH JAMB TRIM
- EE-20 NOT USED
- EE-21 WALL MOUNTED LIGHT FIXTURE, SEE ELECTRICAL

KEY NOTES - INTERIOR ELEVATION

- IE-1 NOT USED
- IE-2 WOOD DOOR WITH PAINTED PRESSED METAL FRAME
- IE-3 GYPSUM BOARD, PAINTED
- IE-4 CONCRETE BLOCK, PAINTED
- IE-5 OVERHEAD COILING COUNTER SHUTTER
- IE-6 EXPOSED STRUCTURAL STEEL COLUMN, PAINT FINISH
- IE-7 100 RUBBER WALL BASE
- IE-8 HOLLOW METAL DOOR WITH PAINTED PRESSED METAL FRAME
- IE-9 NOT USED
- IE-10 CURTAIN WALL WINDOW
- IE-11 AUTOMATIC DOOR OPERATOR (ADO)
- IE-12 WATER FOUNTAIN
- IE-13 TOILET / SHOWER PARTITION
- IE-14 MILLWORK CHANGE ROOM BENCH

5	0	2016/07/26	ISSUED FOR SITE PLAN CONTROL
4	0	2016/06/01	ISSUED FOR TENDER
3	0	2016/04/27	ISSUED FOR SITE PLAN CONTROL
2	0	2016/04/27	ISSUED FOR BUILDING PERMIT
1	0	2016/04/27	ISSUED FOR SITE PLAN CONTROL
REV.	DATE	ISSUE	

LES IDÉES, CONCEPTS, DISPOSITIONS ET PLANS MONTRÉS OU REPRÉSENTÉS PAR CE DESSIN APPARTIENNENT À EDWARD J. CUHACI AND ASSOCIATES ARCHITECTS INC. ET ONT ÉTÉ CRÉÉS, ET DÉVELOPPÉS POUR ÊTRE UTILISÉS DANS LE CADRE DU PRÉSENT PROJET. ILS NE DOIVENT PAS ÊTRE UTILISÉS À D'AUTRES FINS NI COMMUNIQUÉS À QUI QUE CE SOIT SANS LA PERMISSION ÉCRITE DE EDWARD J. CUHACI AND ASSOCIATES ARCHITECTS INC.

L'ARCHITECTE DÉCLINE TOUTE RESPONSABILITÉ DÉCOULANT DE PROBLÈMES FAISANT SUITE AU NON RESPECT DES PLANS ET DEVIS OU DE L'INTENTION DU CONCEPT QU'ILS TRANSMETTENT, OU DE TOUTS PROBLÈMES POUVANT RÉSULTER DU DÉFAUT DE TIERS D'OBTENIR OU DE SUIVRE LES INSTRUCTIONS DE L'ARCHITECTE RELATIVEMENT AUX ERREURS, OMISSIONS, INCOHÉRENCES, AMBIGUITÉS OU CONTRADICTIONS ALLÉGUÉES.

L'ENTREPRENEUR DOIT VÉRIFIER TOUTES LES DIMENSIONS SUR PLACE ET INFORMER L'ARCHITECTE DE TOUT ÉCART AVANT LE DÉBUT DES TRAVAUX. NE PAS MESURER LES DESSINS À L'ÉCHELLE.

ALL IDEAS, DESIGNS, ARRANGEMENTS, AND PLANS INDICATED OR REPRESENTED BY THIS DRAWING ARE OWNED BY AND THE PROPERTY OF EDWARD J. CUHACI AND ASSOCIATES INC. AND WERE CREATED, DEVELOPED, AND DEVELOPED FOR USE ON AND IN CONNECTION WITH THE SPECIFIED PROJECT. NONE OF THE IDEAS, DESIGNS, ARRANGEMENTS OR PLANS SHALL BE USED BY OR DISCLOSED TO ANY PERSON, FIRM, OR CORPORATION FOR ANY PURPOSE WHATSOEVER WITHOUT THE WRITTEN PERMISSION OF EDWARD J. CUHACI AND ASSOCIATES INC.

THE ARCHITECT WAIVES ANY AND ALL RESPONSIBILITY AND LIABILITY FOR PROBLEMS WHICH ARISE FROM FAILURE TO FOLLOW THESE PLANS, SPECIFICATIONS, AND THE DESIGN INTENT THEY CONVEY, OR FOR PROBLEMS WHICH ARISE FROM OTHERS' FAILURE TO OBTAIN AND/OR FOLLOW THE ARCHITECT'S GUIDANCE WITH RESPECT TO ANY ERRORS, OMISSIONS, INCONSISTENCIES, AMBIGUITIES OR CONFLICTS WHICH ARE ALLEGED.

CONTRACTOR TO VERIFY ALL DIMENSIONS AND NOTIFY THE ARCHITECT OF ANY DISCREPANCIES BEFORE WORK COMMENCES. DO NOT SCALE DRAWINGS

EDWARD J. CUHACI & ASSOCIATES ARCHITECTS INC.
 1371 Colonel By, Suite 101, Ottawa, Ontario, K1S 1K1
 Fax: (613) 291-1844 | telephone: (613) 291-7110 Email: info@ejcuhaci.com

PROJET/TITRE/TITRE DU PROJET
 ÉCOLE SECONDAIRE CATHOLIQUE PAUL-DESMARAIS - DOME
 5315 ABBOTT STREET OTTAWA, ON

CONSEIL DES ÉCOLES CATHOLIQUES DU CENTRE-EST
 4000, RUE LABELLE, OTTAWA, ON K1J 1A1

DRAWING/TITRE/TITRE DU DESSIN

ELEVATIONS BUILDING SECTIONS

SCALE	1:100	PROJ. NO.	1714	ISSUE NO.	5	REV. NO.	0
DRAWN BY	S.R.	DRAWING/DESSIN					
CHECKED BY	J.J.						
DATE	AUGUST 2017	ACAO FILE/FICHER	1714-A200-DWG				