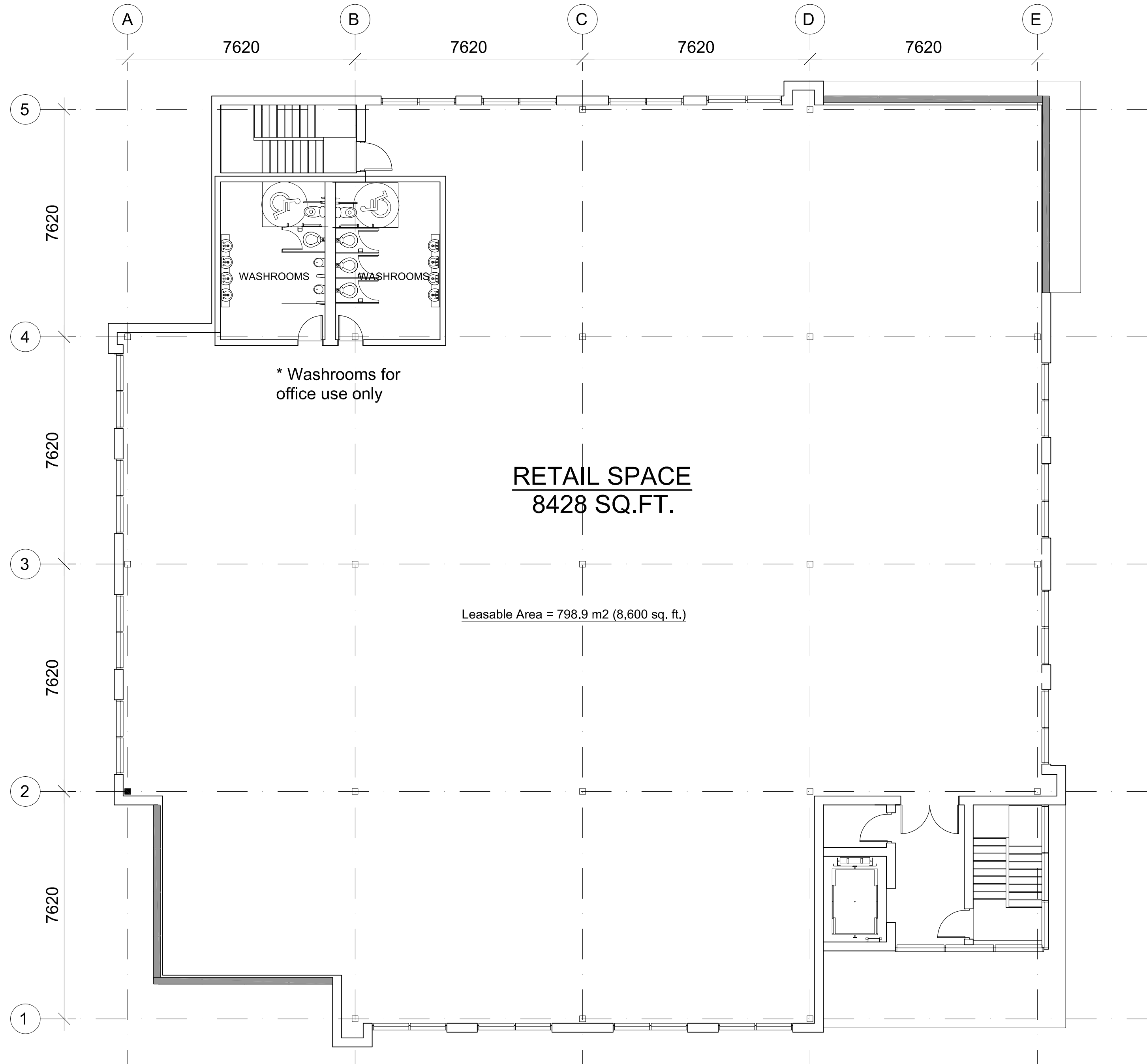
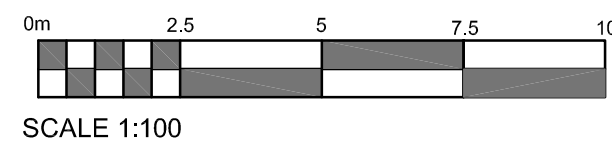


1 GROUND FLOOR PLAN
A01 SCALE = 1:100



1 SECOND FLOOR PLAN
A01 SCALE = 1:100



IT IS THE RESPONSIBILITY OF THE APPROPRIATE CONTRACTOR TO CHECK AND VERIFY ALL DIMENSIONS ON SITE AND TO REPORT ALL ERRORS AND/OR OMISSIONS TO THE ARCHITECT.
ALL CONTRACTORS MUST COMPLY WITH ALL PERTINENT CODES AND BY-LAWS.
THIS DRAWING MAY NOT BE USED FOR CONSTRUCTION UNTIL SIGNED BY THE ARCHITECT.
DO NOT SCALE DRAWINGS.
COPYRIGHT RESERVED.

NOTATION SYMBOLS:

- 00 INDICATES DRAWING NOTES, LISTED ON EACH SHEET.
- 00 INDICATES ASSEMBLY TYPE; REFER TO TYPICAL ASSEMBLIES SCHEDULE.
- 00 INDICATES WINDOW TYPE; REFER TO WINDOW ELEVATIONS AND DETAILS ON A900 SERIES.
- 000 INDICATES DOOR TYPE; REFER TO DOOR SCHEDULE AND DETAILS ON A900 SERIES.
- 000 DETAIL NUMBER
- 00 TITLE
- 000 DETAIL REFERENCE PAGE
- 000 DETAIL CROSS REFERENCE PAGE

3	REVISED AS PER SPC 1st ROUND COMMENTS	May 14, 19
2	ISSUED FOR SITE PLAN CONTROL	Dec. 19, 18
1	ISSUED TO CONSULTANTS	Sept 7, 18
No.	DESCRIPTION	DATE

REVISIONS:

ARCHITECT SEAL:

ONTARIO ASSOCIATION OF ARCHITECTS

RODERICK LAHEY ARCHITECT INC.

LICENCE # 4275

SEAL DATE: STAMP DATE

NORTH ARROW:

↑

CLIENT:

RIO CAN

ARCHITECT:

rla/architecture

roderick lahey architect inc.

56 beech street, ottawa, ontario K1S 3J6
t. 613.724.9932 f. 613.724.1209 rlaarchitecture.ca

PROJECT TITLE:

LINCOLN FIELDS

2525 CARLING AVENUE

OTTAWA ONTARIO

SHEET TITLE:

2 STOREY COMMERCIAL

RETAIL BUILDING

FLOOR PLANS

DRAWN: RV	CHECKED: RV
SCALE: 1:100	SHEET No. A01
PROJECT No. 1803	