

FINISH LEGEND

- 01 CLEAR SEALED VISION GLASS UNITS
CLEAR GLASS SEALED UNITS IN ALUMINUM CURTAIN WALL FRAMING
-8MM CLEAR HEAT STRENGTHENED EXTERIOR PANE
-8MM CLEAR HEAT STRENGTHENED INTERIOR PANE
-SURFACE 1:
-SURFACE 2: LOW-E COATING
-SURFACE 3:
-SURFACE 4:
-ARGON FILLED
-WARM EDGE SPACERS
-VERTICAL AND HORIZONTAL EXTERIOR CAPS WHERE INDICATED
-FRAMES INTERIOR: CLEAR ANODIZED
-CAPS EXTERIOR: CLEAR ANODIZED
- 02 PRE-FINISHED ALUMINUM COMPOSITE PANELS
RAINSCREEN SYSTEM WITH DRY JOINTS ON
18MM EXTERIOR GRADE PLYWOOD SHEATHING
ON METAL STUD FRAMING ASSEMBLY
WITH SEMI-RIGID MINERAL WOOL INSULATION (R=20)
POLY VAPOUR BARRIER
-VERTICAL JOINTS AS INDICATED
-FINISH: CLEAR ANODIZED (ALPOLIC MATERIALS)
- 03 PRE-FINISHED ALUMINUM COMPOSITE PANELS
RAINSCREEN SYSTEM WITH DRY JOINTS ON
18MM EXTERIOR GRADE PLYWOOD SHEATHING
ON METAL STUD FRAMING ASSEMBLY
WITH SEMI-RIGID MINERAL WOOL INSULATION (R=20)
POLY VAPOUR BARRIER
-VERTICAL JOINTS AS INDICATED
-COLOUR: TOR RED (ALPOLIC MATERIALS)
- 04 PRE-FINISHED ALUMINUM PLATE PANELS
RAINSCREEN SYSTEM WITH DRY JOINTS ON
18MM EXTERIOR GRADE PLYWOOD SHEATHING
ON METAL STUD FRAMING ASSEMBLY
WITH SEMI-RIGID MINERAL WOOL INSULATION (R=20)
POLY VAPOUR BARRIER
-HORIZONTAL REVEALS AS INDICATED
-COLOUR: DURANAR - SANDSTONE
- 05 EXTERIOR INSULATION FINISH SYSTEM (EIFS) ASSEMBLY
-COLOUR: DURABOND BMOG-48
-FINISH: GRANITSTONE
1" HORIZONTAL AND VERTICAL REVEALS AS INDICATED
- 06 RESERVED
- 07 ARCHITECTURAL BRICK
MELVILLE NORMAN BRICK - PERMACON
-COLOUR: ROCKLAND BLACK
-RUNNING BOND
- 08 ARCHITECTURAL BRICK SILL WITH DRIP EDGE
MELVILLE NORMAN BRICK - PERMACON
-COLOUR: ROCKLAND BLACK
-MORTAR JOINTS TO MATCH BRICK
- 09 ARCHITECTURAL CONCRETE BLOCK VENEER
ARCHITECTURAL SERIES - RICHVALE YORK BLOCK
-COLOUR: DARK CHARCOAL
-MORTAR JOINTS TO MATCH BRICK
- 10 ARCHITECTURAL BLOCK SILL WITH DRIP EDGE
CAMBRIDGE ARCHITECTURAL PROFILE SILL - RICHVALE YORK
R47.5 ANGLED
-COLOUR: CHARCOAL
-MORTAR JOINTS TO MATCH BRICK
- 11 1'-0" HIGH POURED CONCRETE CURB
6" PROJECTION FROM FACE OF CURTAIN WALL FRAMING
- 12 INSULATED HOLLOW METAL MAN DOOR & FRAME
-PAINT FINISH
-COLOUR: TBD
- 13 CLEAR TEMPERED GLASS UNITS
IN 14 SLIDING DOOR SYSTEM
WITH EMERGENCY BREAKOUTS
-CLEAR ANODIZED ALUMINUM FRAMING
- 14 PRE-FINISHED METAL SIDING SYSTEM
VICWEST 7" CORRUGATED METAL SIDING
-VERTICAL PROFILE
-COLOUR: QC 16072 CHARCOAL
- 15 PRE-FINISHED METAL SIDING SYSTEM
VICWEST 7" CORRUGATED METAL SIDING
-VERTICAL PROFILE
-COLOUR: QC 16071 STONE GREY
- 16 PRE-FINISHED METAL CAP AND FLASHING
-COLOUR: VICWEST QC 16072 CHARCOAL
- 17 PRE-FINISHED METAL CAP AND FLASHING
-COLOUR: VICWEST QC 16071 STONE GREY
- 18 LED LIT 'metro' LOGO SIGNAGE
- INDIVIDUAL LETTERS WITH INTEGRAL LIGHTING
-SIGN TO BE SURFACE MOUNTED
- 19 WHITE 'metro' AND BLACK 'ca' FLEXI LETTERS
PINNED TO PRE-FINISHED ALUMINUM CANOPY
- 20 BLACK COMMUNITY FLEXI SIGN LETTERS
PINNED TO EXTERIOR INSULATED FINISH SYSTEM
- 21 - 22 RESERVED
- 23 CLEAR TEMPERED GLASS UNITS
IN ALUMINUM ENTRANCE FRAMING
-NO CENTRE MULLION
- 24 - 26 RESERVED
- 27 WALL PACK LIGHT FIXTURE
- 28 RESERVED
- 29 1/2" VERTICAL REVEAL
WITH 1/2" DEEP PRE-FINISHED METAL VERTICAL TRIM
CONTINUOUS ALONG EDGE OF CORRUGATED METAL SIDING PANELS
- 30 LED LIT 'STARBUCKS' LOGO SIGNAGE
-SIGN TO BE SURFACE MOUNTED
- 31 RESERVED
- 32 METRO SIGN AT ENTRANCE PORTAL BEYOND
- 33 RED 'entrance' FLEXI LETTERS
PINNED TO ALUMINUM PANELS
- 34 PRE-FINISHED ALUMINUM COMPOSITE PANELS AT COLUMNS
WITH 1'-0" HIGH CONCRETE CURB AT BASE
-COLOUR: CLEAR ANODIZED
(EXTENTS INDICATED AS HIDDEN LINE FOR CLARITY)
- 35 ILLUMINATED 'NATURE'S SIGNATURE' ALUMINUM SIGN CABINET
-SIGN TO BE SURFACE MOUNTED
- 36 LED LIT 'PHARMACY' SIGNAGE
-SIGN TO BE SURFACE MOUNTED
- 37 PRE-FINISHED METAL SIDING SYSTEM
VICWEST VERTICAL FLAT PROFILE METAL SIDING
QC16071 STONE GREY
- 38 CONCRETE FILLED 12" DIA STEEL PIPE BOLLARD
- 39 OVERHEAD DRIVE IN DOOR

This drawing is not to be used for construction unless signed by partner in charge.

Contractors must verify all dimensions and be responsible for same, report any discrepancies to the architect before commencing the work.

Prints are not to be scaled.

All drawings and related documents are the sole copyright property of the architects and must be returned upon request, any reproduction of drawings and related documents in part or in whole is forbidden without the architects written permission.

detail number
sheet number
key to details

metro

OWNER:
Owner
25 Vickers Road, Building 'A' (2nd Floor)
Etobicoke | Ontario | M9B 1C1

**NEW GROCERY
STORE**
RETAIL DEVELOPMENT

CARLING AVENUE, LINCOLN FIELDS,
OTTAWA, ONTARIO

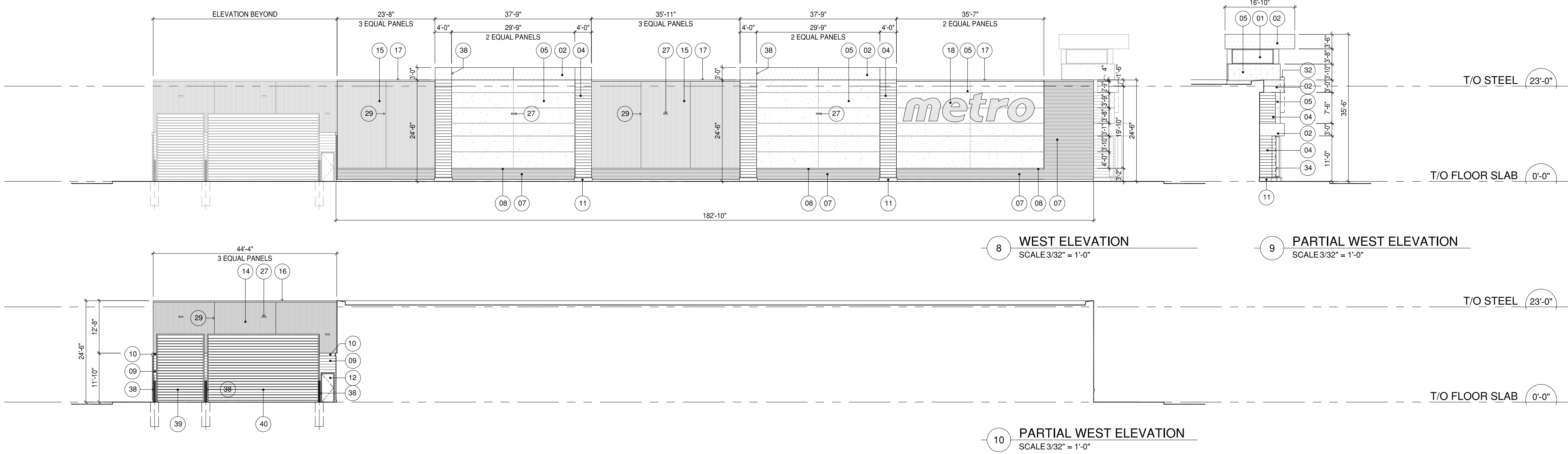
Elevations

Project Number:

18108

Drawn By: MHM
Checked By: AK
Date: NOVEMBER 2018
Scale: 1/16" = 1'-0"
Sheet Number:

A3.0



FINISH LEGEND

- | | | |
|----|---|----------|
| 01 | CLEAR SEALED VISION GLASS UNITS
CLEAR GLASS SEALED UNITS IN ALUMINUM CURTAIN WALL FRAMING
-8MM CLEAR HEAT STRENGTHENED EXTERIOR PANE
-8MM CLEAR HEAT STRENGTHENED INTERIOR PANE
-SURFACE 1:
-SURFACE 2: LOW-E COATING
-SURFACE 3:
-SURFACE 4:
-ARGON FILLED
-WARM EDGE SPACERS
-VERTICAL AND HORIZONTAL EXTERIOR CAPS WHERE INDICATED
-FRAMES INTERIOR; CLEAR ANODIZED
-CAPS EXTERIOR: CLEAR ANODIZED | |
| 02 | PRE-FINISHED ALUMINUM COMPOSITE PANELS
RAINSCREEN SYSTEM WITH DRY JOINTS ON
18MM EXTERIOR GRADE PLYWOOD SHEATHING
ON METAL STUD FRAMING ASSEMBLY
WITH SEMI-RIGID MINERAL WOOL INSULATION (R=20)
POLY VAPOUR BARRIER
-VERTICAL JOINTS AS INDICATED
-FINISH: CLEAR ANODIZED (ALPOLIC MATERIALS) | |
| 03 | PRE-FINISHED ALUMINUM COMPOSITE PANELS
RAINSCREEN SYSTEM WITH DRY JOINTS ON
18MM EXTERIOR GRADE PLYWOOD SHEATHING
ON METAL STUD FRAMING ASSEMBLY
WITH SEMI-RIGID MINERAL WOOL INSULATION (R=20)
POLY VAPOUR BARRIER
-VERTICAL JOINTS AS INDICATED
-COLOUR: TOR RED (ALPOLIC MATERIALS) | |
| 04 | PRE-FINISHED ALUMINUM PLATE PANELS
RAINSCREEN SYSTEM WITH DRY JOINTS ON
18MM EXTERIOR GRADE PLYWOOD SHEATHING
ON METAL STUD FRAMING ASSEMBLY
WITH SEMI-RIGID MINERAL WOOL INSULATION (R=20)
POLY VAPOUR BARRIER
-HORIZONTAL REVEALS AS INDICATED
-COLOUR: DURANAR - SANDSTONE | |
| 05 | EXTERIOR INSULATION FINISH SYSTEM (EIFS) ASSEMBLY
-COLOUR: DURABOND BMD-48
-FINISH: GRANITSTONE
-HORIZONTAL AND VERTICAL REVEALS AS INDICATED | |
| 06 | RESERVED | |
| 07 | ARCHITECTURAL BRICK
MELVILLE NORMAN BRICK - PERMACON
-COLOUR: ROCKLAND BLACK
-RUNNING BOND | |
| 08 | ARCHITECTURAL BRICK SILL WITH DRIP EDGE
MELVILLE NORMAN BRICK - PERMACON
-COLOUR: ROCKLAND BLACK
-MORTAR JOINTS TO MATCH BRICK | |
| 09 | ARCHITECTURAL CONCRETE BLOCK VENEER
ARCHITECTURAL SERIES - RICHVALE YORK BLOCK
-COLOUR: DARK CHARCOAL
-MORTAR JOINTS TO MATCH BRICK | |
| 10 | ARCHITECTURAL BLOCK SILL WITH DRIP EDGE
CAMBRIDGE ARCHITECTURAL PROFILE SILL - RICHVALE YORK
R247.5 ANGLED
-COLOUR: CHARCOAL
-MORTAR JOINTS TO MATCH BRICK | |
| 11 | 1'-0" HIGH POURED CONCRETE CURB
6" PROJECTION FROM FACE OF CURTAIN WALL FRAMING | |
| 12 | INSULATED HOLLOW METAL MAN DOOR & FRAME
-PAINT FINISH
-COLOUR: TBD | |
| 13 | CLEAR TEMPERED GLASS UNITS
IN 14" SLIDING DOOR SYSTEM
WITH EMERGENCY BREAKOUTS
-CLEAR ANODIZED ALUMINUM FRAMING | |
| 14 | PRE-FINISHED METAL SIDING SYSTEM
VICWEST 7" CORRUGATED METAL SIDING
-VERTICAL PROFILE
-COLOUR: QC 16072 'CHARCOAL' | |
| 15 | PRE-FINISHED METAL SIDING SYSTEM
VICWEST 7" CORRUGATED METAL SIDING
-VERTICAL PROFILE
-COLOUR: QC 16071 'STONE GREY' | |
| 16 | PRE-FINISHED METAL CAP AND FLASHING
-COLOUR: VICWEST QC 16072 'CHARCOAL' | |
| 17 | PRE-FINISHED METAL CAP AND FLASHING
-COLOUR: VICWEST QC 16071 'STONE GREY' | |
| 18 | LED LIT 'metro' LOGO SIGNAGE
- INDIVIDUAL LETTERS WITH INTEGRAL LIGHTING
-SIGN TO BE SURFACE MOUNTED | |
| 19 | WHITE 'metro' AND BLACK 'ca' FLEXI LETTERS
PINNED TO PRE-FINISHED ALUMINUM CANOPY | |
| 20 | BLACK COMMUNITY FLEXI SIGN LETTERS
PINNED TO EXTERIOR INSULATED FINISH SYSTEM | |
| 21 | 22 | RESERVED |
| 23 | CLEAR TEMPERED GLASS UNITS
IN ALUMINUM ENTRANCE FRAMING
-NO CENTRE MULLION | |
| 24 | 26 | RESERVED |
| 27 | WALL PACK LIGHT FIXTURE | |
| 28 | RESERVED | |
| 29 | 1/2" VERTICAL REVEAL
WITH 1/2" DEEP PRE-FINISHED METAL VERTICAL TRIM
CONTINUOUS ALONG EDGE OF CORRUGATED METAL SIDING PANELS | |
| 30 | LED LIT 'STARBUCKS' LOGO SIGNAGE
-SIGN TO BE SURFACE MOUNTED | |
| 31 | RESERVED | |
| 32 | METRO SIGN AT ENTRANCE PORTAL BEYOND | |
| 33 | RED 'entrance' FLEXI LETTERS
PINNED TO ALUMINUM PANELS | |
| 34 | PRE-FINISHED ALUMINUM COMPOSITE PANELS AT COLUMNS
WITH 1'-0" HIGH CONCRETE CURB AT BASE
-COLOUR: CLEAR ANODIZED
(EXTENTS INDICATED AS HIDDEN LINE FOR CLARITY) | |
| 35 | ILLUMINATED 'NATURE'S SIGNATURE' ALUMINUM SIGN CABINET
-SIGN TO BE SURFACE MOUNTED | |
| 36 | LED LIT 'PHARMACY' SIGNAGE
-SIGN TO BE SURFACE MOUNTED | |
| 37 | PRE-FINISHED METAL SIDING SYSTEM
VICWEST VERTICAL FLAT PROFILE METAL SIDING
QC16071 'STONE GREY' | |
| 38 | CONCRETE FILLED 12" DIA STEEL PIPE BOLLARD | |
| 39 | OVERHEAD DRIVE IN DOOR | |

NEW GROCERY STORE RETAIL DEVELOPMENT

CARLING AVENUE, LINCOLN FIELDS,
OTTAWA, ONTARIO

Elevations

Project Number:

18108

Drawn By: MHM
Checked By: AK
Date: NOVEMBER 2018
Scale: 1/16" = 1'-0"
Sheet Number:

A3.1