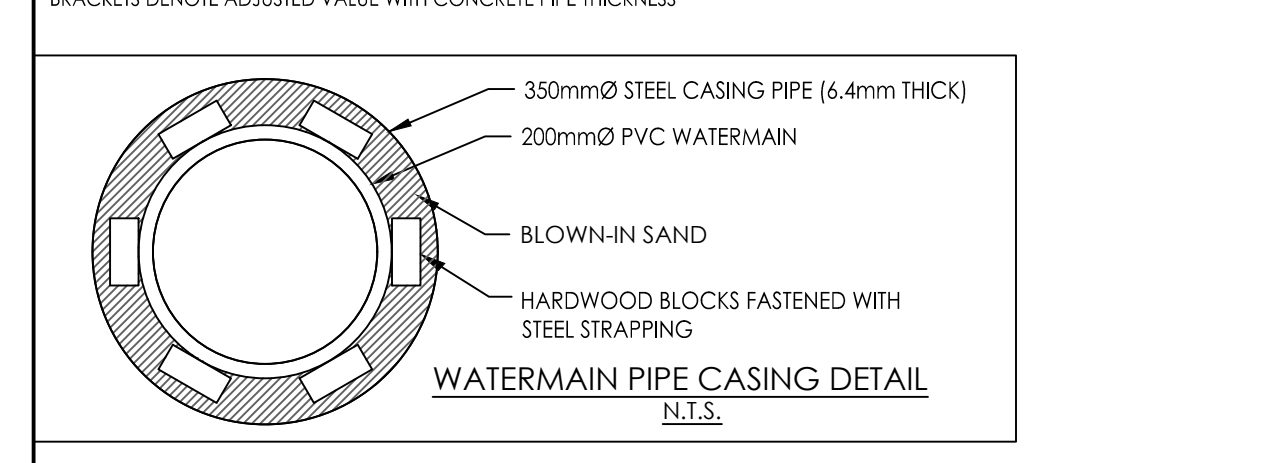


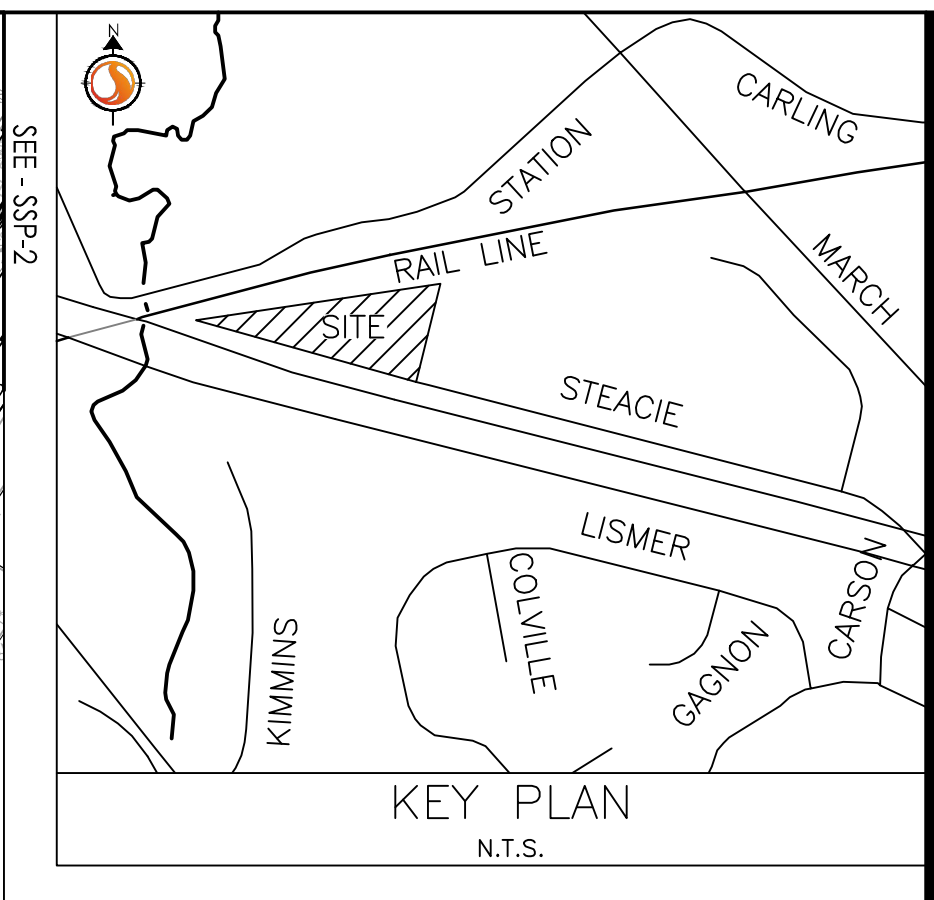
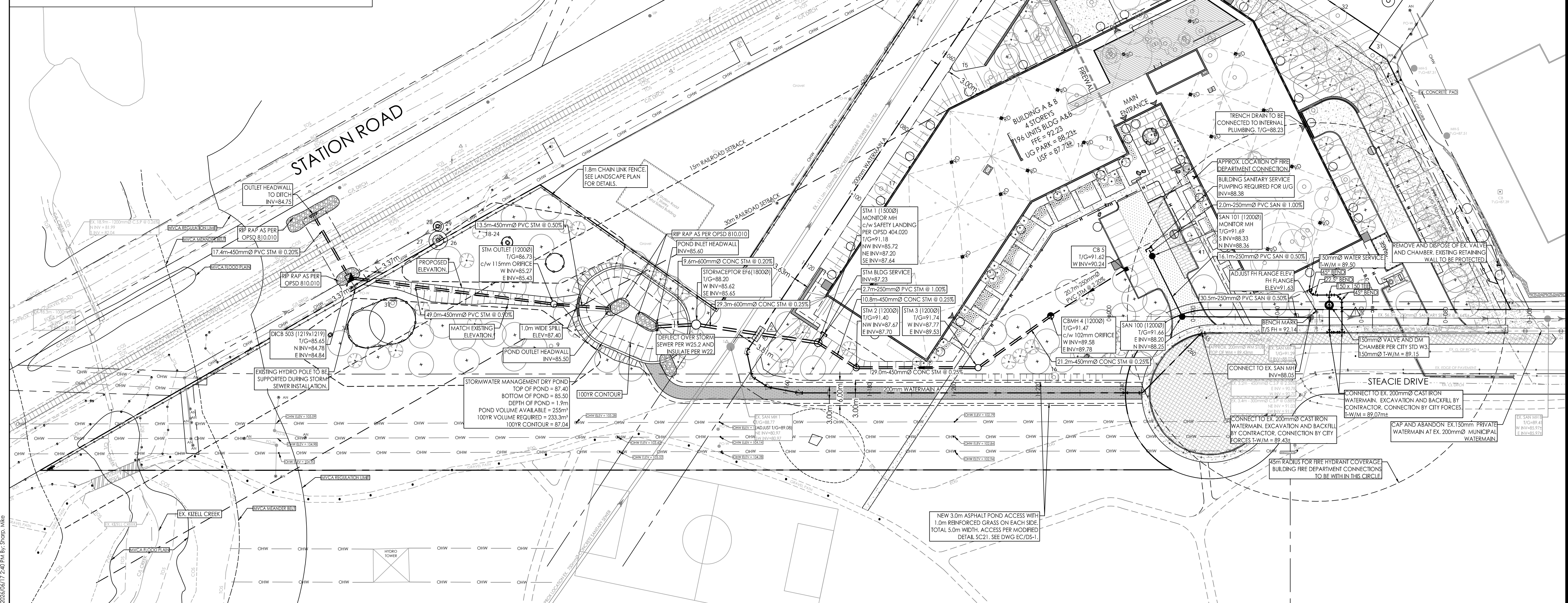
CROSSING	STM INV	STM OBV	SAN INV	SAN OBV	WTR TOP	WTR BTM	RAIL ELEV	DITCH INV
▲	85.69(85.59)	86.29(86.39)	86.62±	86.87±	88.21	88.01		
▲					87.09	86.89		
▲					83.51	83.31	86.64	
▲			78.90(78.78)±	79.45(79.77)±	83.51	83.31		85.91



STATION	FINISHED GRADE	TOP W/M	ITEM
1+000	86.50	84.100	45° HORIZONTAL BEND
1+005	86.55	83.510	TOP OF PIPE
1+011.7	86.64	83.510	WATERMAIN CROSSING RAIL LINE
1+015.1	86.17	83.510	WATERMAIN CROSSING SANITARY SEWER
1+016.6	85.91	83.510	WATERMAIN CROSSING DITCH LINE
1+020	86.18	83.510	TOP OF PIPE
1+026.1	86.57	84.170	45° HORIZONTAL BEND
1+028.1	86.63	84.230	200mm VALVE AND BOX
1+040	86.86	84.460	TOP OF PIPE
1+060	87.25	84.850	TOP OF PIPE
1+080	87.96	85.560	TOP OF PIPE
1+100	89.12	86.720	TOP OF PIPE
1+120	89.27	86.870	TOP OF PIPE
1+137.2	89.24	86.840	45° VERTICAL BEND PER W25.2
1+138.2	89.24	87.870	45° VERTICAL BEND PER W25.2 INSULATE PER W22
1+141.8	89.26	87.840	45° VERTICAL BEND PER W25.2 INSULATE PER W22
1+142.8	89.26	86.840	45° VERTICAL BEND PER W25.2
1+145	89.27	86.870	45° HORIZONTAL BEND
1+151.2	89.53	87.130	45° HORIZONTAL BEND
1+155.7	89.79	87.390	22 1/2" HORIZONTAL BEND
1+163.2	90.07	87.670	11 1/2" HORIZONTAL BEND
1+180	90.66	88.360	TOP OF PIPE
1+200	91.25	88.850	TOP OF PIPE
1+220	91.55	89.150	TOP OF PIPE
1+240.8	91.82	89.420	200mm VALVE AND BOX
1+244.8	91.76	89.360	45° HORIZONTAL BEND
1+264.9	91.57	89.170	45° HORIZONTAL BEND

AREA ID	STRUCTURE ID	ICD TYPE	100YR HEAD (m)	100YR FLOW (L/s)
POND 1	STM OUTLET	115mm ORIFICE	1.58	35.3
POND 2	CSM 4	102mm ORIFICE	2.09	29.9

BUILDING	DRAIN TYPE	# DRAINS	100YR HEAD (m)	100YR RELEASE RATE (L/s)
BUILDING	WATS ACCURFLOW	10	0.15	12.3



Stantec

Stantec Consulting Ltd.
400 - 1331 Clyde Avenue
Ottawa ON
Tel. 613.722.4420
www.stantec.com

Copyright Reserved

The Contractor shall verify and be responsible for all dimensions. DO NOT scale the drawing - any errors or omissions shall be reported to Stantec without delay.

The Copyrights to all designs and drawings are the property of Stantec. Reproduction or use for any purpose other than that authorized by Stantec is forbidden.

Legend

- PROPOSED WATERMAIN
- PROPOSED VALVE AND VALVE BOX
- PROPOSED REDUCER
- PROPOSED FIRE HYDRANT
- PROPOSED VALVE AND DMA CHAMBER AS PER CITY STD W3
- WATER METER
- REMOTE WATER METER
- PROPOSED SANITARY SEWER
- PROPOSED STORM SEWER
- PROPOSED CATCHBASIN
- EXISTING CULVERT
- EXISTING WATERMAIN
- EXISTING VALVE AND VALVE BOX
- EXISTING VALVE CHAMBER
- EXISTING FIRE HYDRANT
- EXISTING SANITARY SEWER
- PROPOSED DEPRESSED CURB LOCATIONS
- PROPOSED BARRIER CURB
- THERMAL INSULATION ON STORM SEWER WHERE COVER IS LESS THAN 1.5m. THERMAL INSULATION ON WATERMAIN WHERE COVER IS LESS THAN 2.4m AS PER W22.
- EX. TREE TO BE REMOVED
- EX. TREE TO BE RETAINED
- ROAD CUT ASPHALT RE-INSTATEMENT PER CITY STD R10
- GRAVEL RE-INSTATEMENT AREA
- LANDSCAPE RE-INSTATEMENT AREA. 150mm TOPSOIL AND SEED
- HEAVY DUTY ASPHALT
- ASPHALT ACCESS PER MODIFIED SC21. SEE DETAIL DWG EC/DS-1
- RETAINED TREE CRITICAL ROOT ZONES (REFER TO TCR FOR DETAILS)
- TREE PROTECTION FENCING PER CITY STD F7 (REFER TO TCR FOR DETAILS)

- Notes**
- FINAL METER AND REMOTE METER LOCATIONS TO BE CONFIRMED BY MECHANICAL CONSULTANT.
 - THE LOCATION AND ELEVATION OF SEWERS, WATERMAIN AND UTILITIES IS APPROXIMATE ONLY AND THE EXACT LOCATION AND ELEVATIONS SHOULD BE DETERMINED BY CONSULTING THE MUNICIPAL AUTHORITIES AND UTILITY COMPANIES CONCERNED. THE CONTRACTOR SHALL PROVE THE LOCATION AND ELEVATION OF SEWERS, WATERMANS AND UTILITIES AND SHALL BE RESPONSIBLE FOR THEIR PROTECTION AND THE IMPLEMENTATION OF ANY NECESSARY PROCEDURES CALLED FOR IN THE APPROPRIATE STANDARD AND REGULATIONS. ANY DISCREPANCY WITH THE INFORMATION SHOWN ON THESE PLANS SHALL BE REPORTED TO THE ENGINEER PRIOR TO CONTINUING WITH CONSTRUCTION.

9	REVISED PER CITY COMMENTS	MJS	DT	26.06.17
8	REVISED PER CITY COMMENTS	MJS	DT	26.03.24
7	REVISED PER CITY COMMENTS	MJS	DT	25.11.28
6	REVISED PER NEW SITE PLAN	MJS	DT	25.07.11
5	REVISED AS PER SITE PLAN AND CITY COMMENTS	MJS	DT	24.12.02
4	REVISED AS PER SITE PLAN AND CITY COMMENTS	MJS	DT	24.04.08
3	REVISED WATERMAIN SEE	MJS	DT	22.04.08
2	REVISED AS PER CITY COMMENTS	MJS	TR	21.05.07
1	ISSUED FOR REVIEW	MJS	TR	20.11.23

Revision	By	Appd.	YY.MM.DD

File Name:	MJS	AMP	MJS	20.08.17
	Dwn.	Chkd.	Dsgn.	YY.MM.DD

Permit/Seal

Client/Project
BRIGIL

100 STEACIE DRIVE

OTTAWA, ON

Title
SITE SERVICING PLAN

Project No. 160401570
Drawing No. SSP-1

Scale 1:500
Sheet 9

Revision
PLAN# 18327