



EMD - BATIMO

LIB ORLEANS - UDRP (ELEVATIONS + VIEWS)

OTTAWA

JUNE 12TH 2026 | 13521

NEUF 

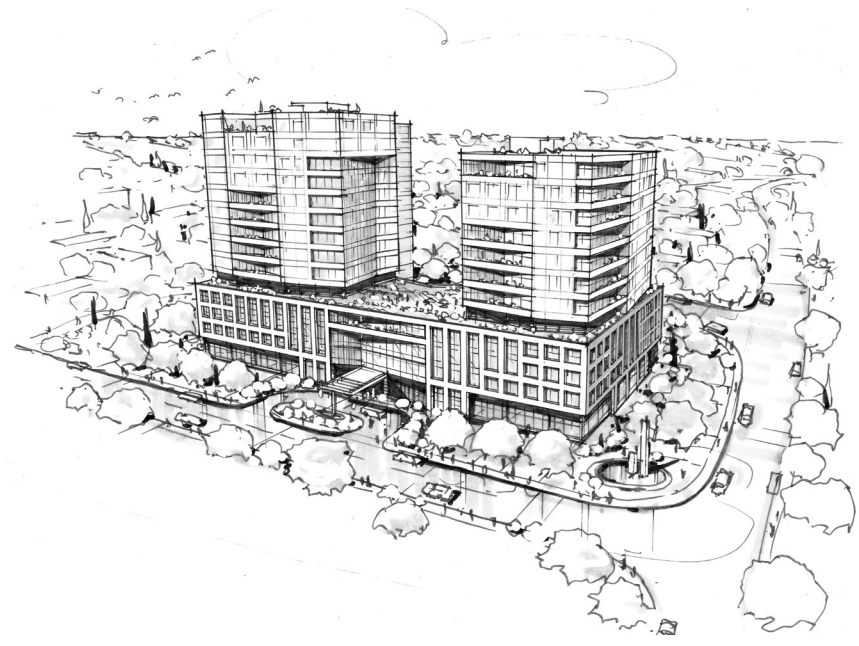
FOTENN

emo batimo

5

VIEWS

PRECEDENTS



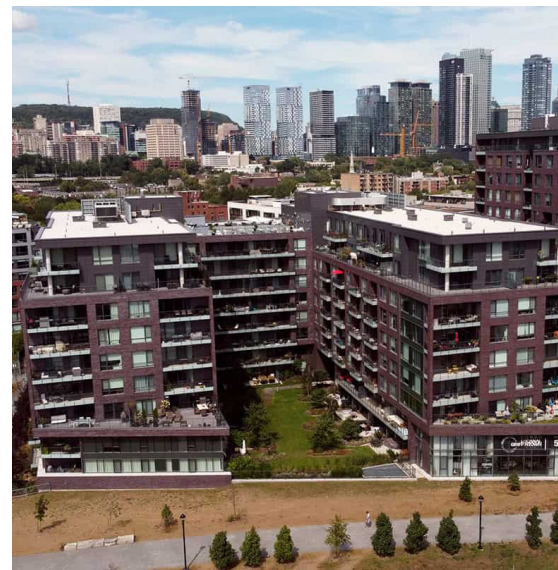
REFERENCE IMAGES



THE SMITH, Boston



Rouen Luciline - Rives de Seine, Rouene



GALDIN, Griffintown Montréal



One Vince Street, London



Plomb, Amsterdam

PEDESTRIAN VIEW 1



PEDESTRIAN VIEW 2



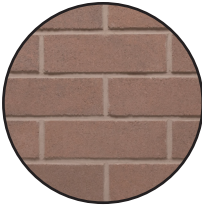
6


ELEVATIONS AND MATERIALITY


WEST ELEVATION

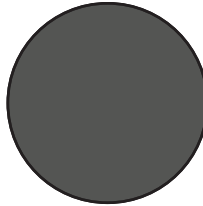
VIEW FROM
BILBERRY DRIVE PROM.

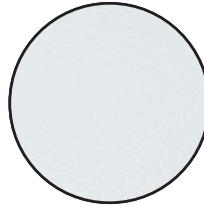
1:400

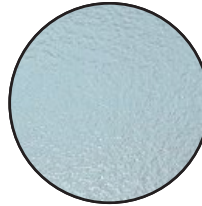
- 

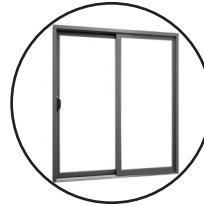
A Brick
Terra
- 

B Precast
Concrete
Panels
White
- 

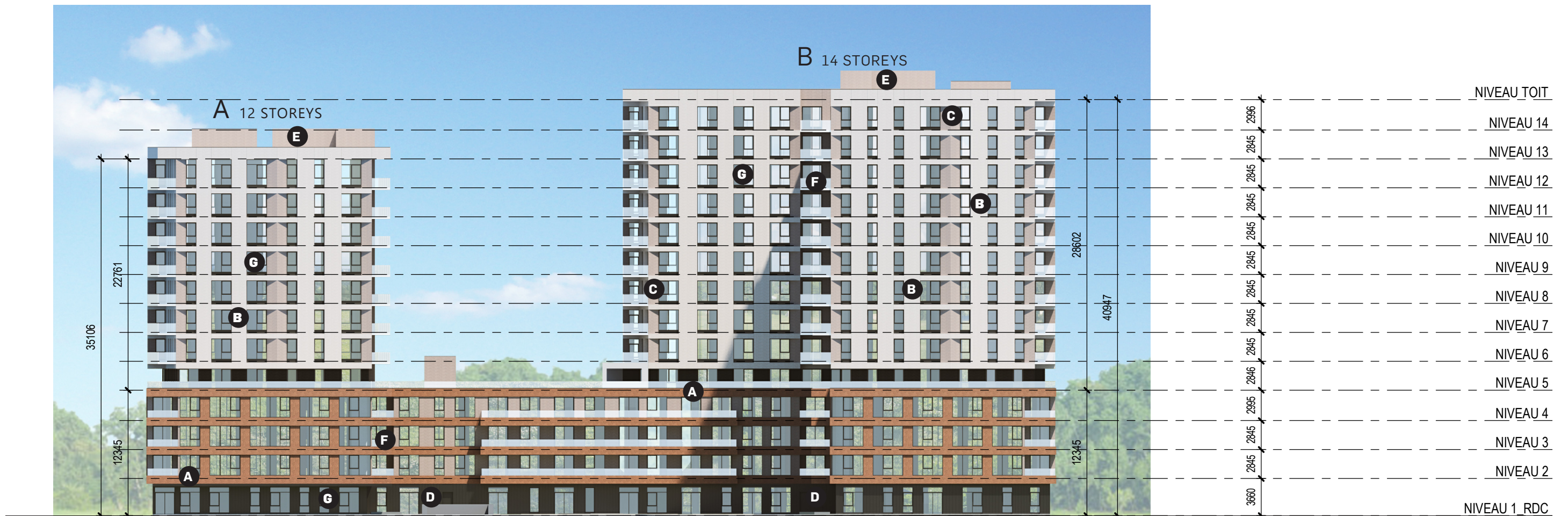
C Precast
Concrete
Panels
Grey
- 

D Metallic
Panel
Anthracite
- 

E Metallic
Panel
White
- 


F Glass
Railing
White
- 


G Windows
Anthracite
framework




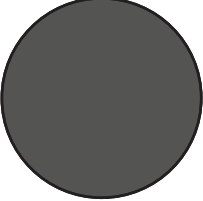
SOUTH ELEVATION

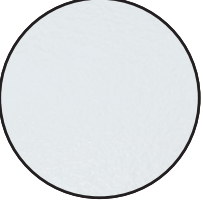
1:400


- 


A Brick
Terra
- 

B Precast
Concrete
Panels
White
- 

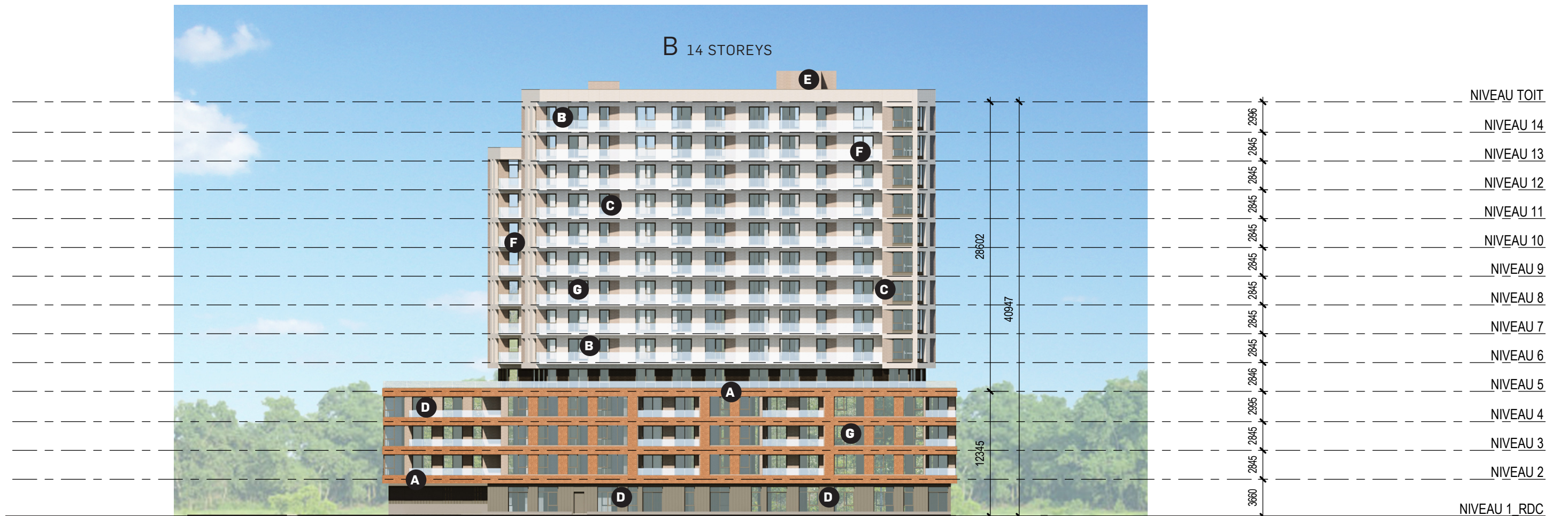
C Precast
Concrete
Panels
Grey
- 

D Metallic
Panel
Anthracite
- 

E Metallic
Panel
White
- 

F Glass
Railing
White
- 

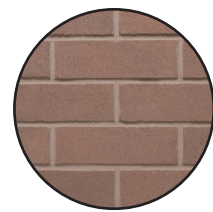
G Windows
Anthracite
framework



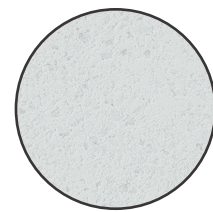
NORTH ELEVATION

VIEW FROM
JEANNE-D'ARC BD.

1:400



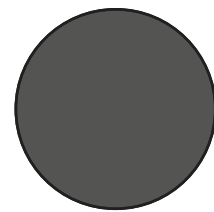
A Brick
Terra



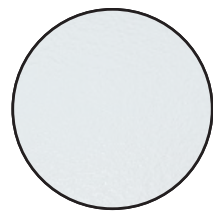
B Precast
Concrete
Panels
White



C Precast
Concrete
Panels
Grey



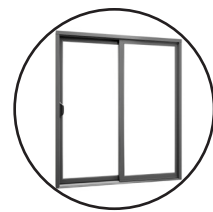
D Metallic
Panel
Anthracite



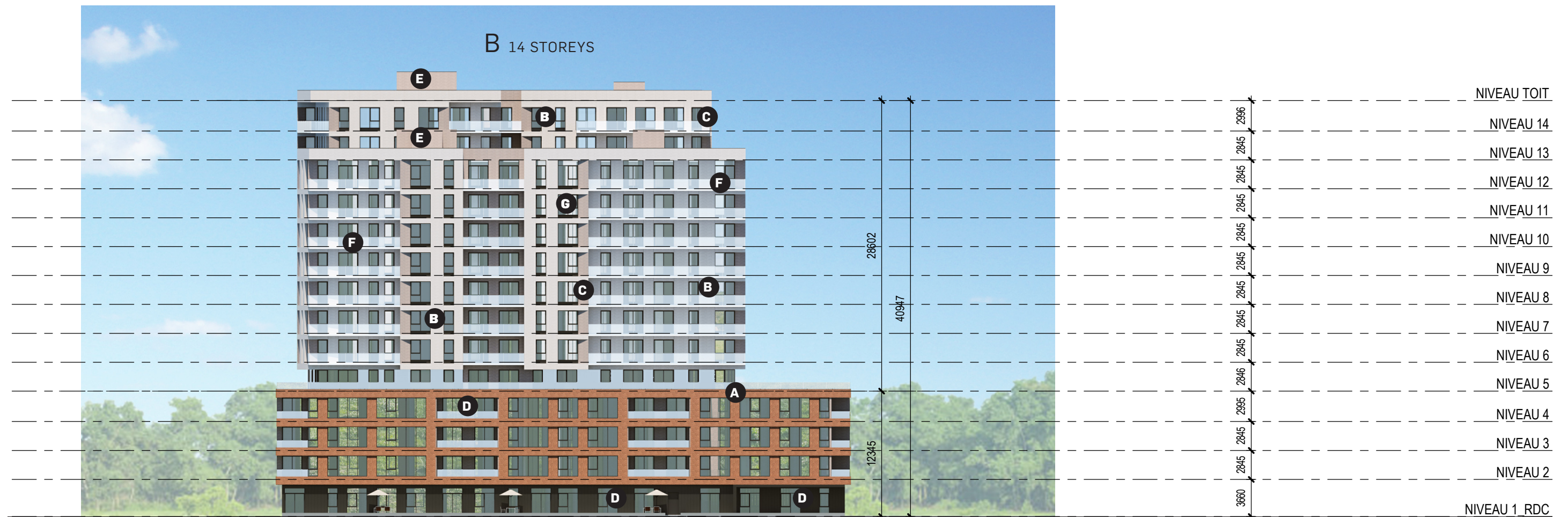
E Metallic
Panel
White



F Glass
Railing
White





G Windows
Anthracite
framework




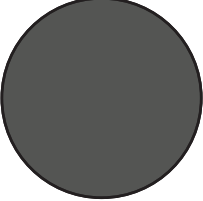
INTERIOR NORTH ELEVATION

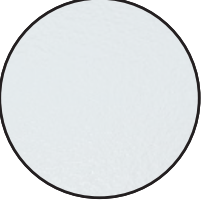
1:400


- 


A Brick
Terra
- 

B Precast
Concrete
Panels
White
- 

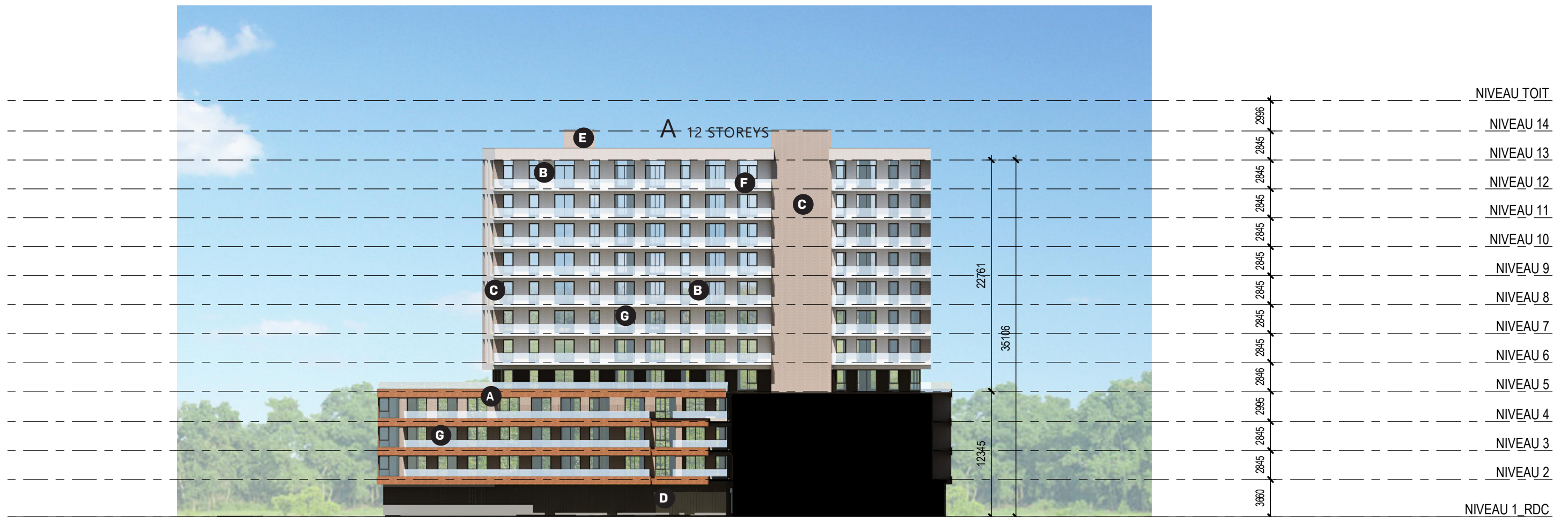
C Precast
Concrete
Panels
Grey
- 

D Metallic
Panel
Anthracite
- 

E Metallic
Panel
White
- 

F Glass
Railing
White
- 

G Windows
Anthracite
framework



NEUF

MONTRÉAL
630, boul. René-Lévesque O.
32e étage, Montréal, QC H3B 1S6
T 514 847 1117 F 514 847 2287

OTTAWA
10 Rideau Street
4e étage, Ottawa, ON K1N 9J1
T 613 234 2274 F 613 234 7453

TORONTO
8 Market Street, Suite 600,
Toronto (ON) M5E 1M6
T 416 864 8550 F 514 847 2287

NEUFarchitectes.com

