

STORM STRUCTURE TABLE				
STRUCTURE ID	DIMENSIONS (mm)	FRAME	T/G ELEV	INVERT
CB 1	600x600	S19	90.18	E=88.38
CB 2	CUSTOM	S19	90.21	MECH.
CB 3	CUSTOM	S19	90.08	MECH.
CB 4	CUSTOM	S19	90.50	MECH.
ST201	1200	S24.1	90.62	N=87.07 W=87.13
ST202	1200	S24.1	90.96	N=85.98 W=85.92
ST203	1200	S24.1	90.27	N=87.32 W=88.09 SE=87.26
ST204	1200	S24.1	90.15	NW=87.18 S=86.96 E=86.90

NOTES:
1. CB2, CB3, AND CB4 TO OUTLET TO PHASE 2 BUILDING MECHANICAL SYSTEM.

SANITARY STRUCTURE TABLE				
STRUCTURE ID	DIMENSIONS (mm)	FRAME	T/G ELEV	INVERT
SA101	1200	S24	89.91	N=86.96 E=86.93
SA101	1200	S24	90.37	W=86.47 E=86.44
SA102	1200	S24	90.80	N=87.13 W=87.07

INLET CONTROL DEVICE (ICD) TABLE	
STRUCTURE	ORIFICE TYPE
CB 1	TEMPEST HF WITH NO FLOW RESTRICTION

152mm WATERMAIN GRADE TABLE - PHASE 1 BUILDING TWIN SERVICES				
STATION	FINISHED GRADE (m)	TOP OF WATER (m)	COVER DEPTH (m)	COMMENTS
1+000	90.10	87.70	2.40	V&VB (BY OTHERS)
1+002	90.26	87.70	2.56	22.5' VERTICAL BEND
1+004.6	91.15	88.75	2.40	22.5' VERTICAL BEND
1+006.7	91.25	88.85	2.40	CAP

152mm WATERMAIN GRADE TABLE - PHASE 2 BUILDING TWIN SERVICES				
STATION	FINISHED GRADE (m)	TOP OF WATER (m)	COVER DEPTH (m)	COMMENTS
2+000	90.03	87.63	2.40	152 OFF 203 TEE
2+007	90.26	87.86	2.40	VALVE & VALVE BOX
2+013.8	90.80	87.81	2.99	CAP

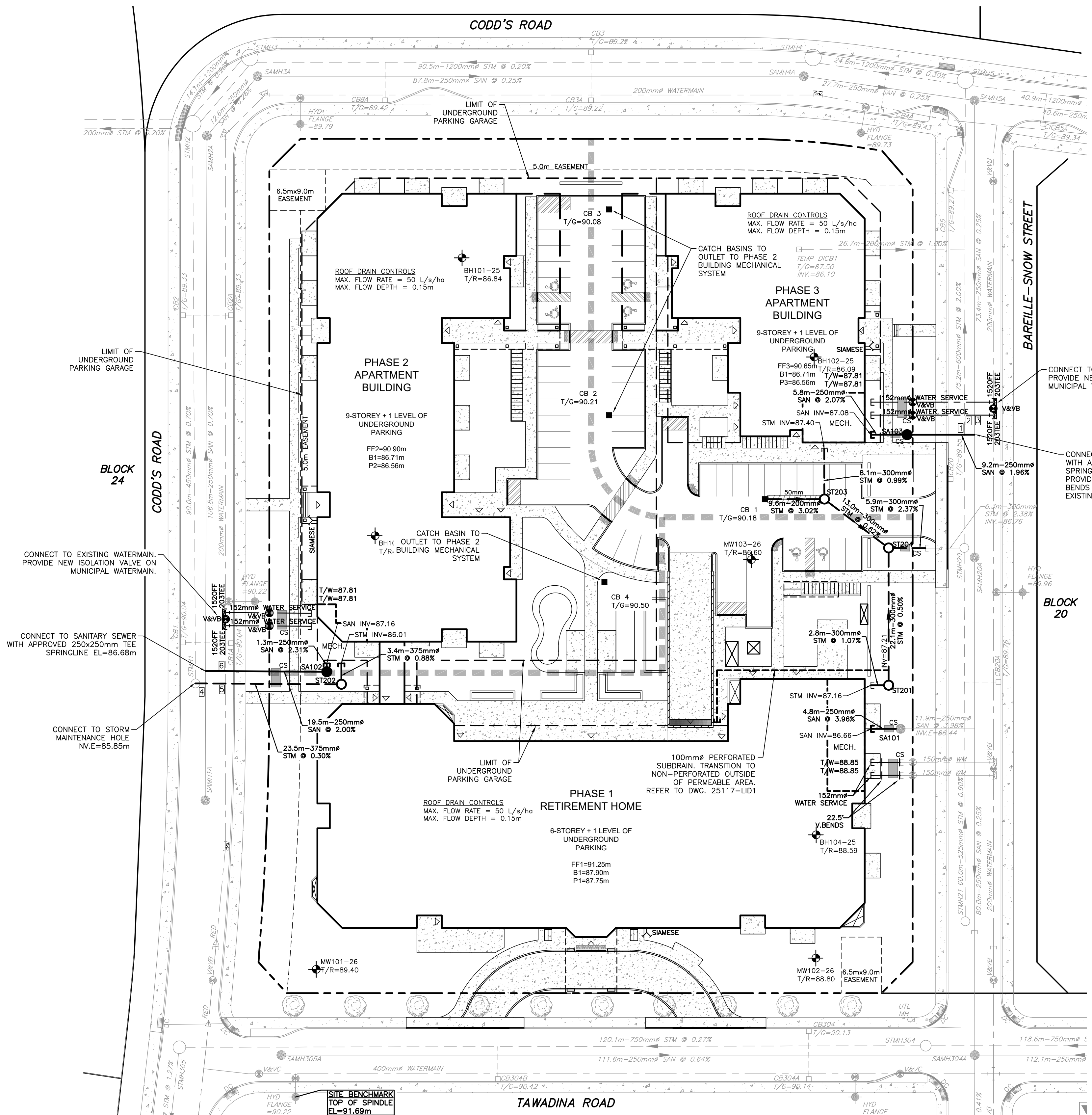
152mm WATERMAIN GRADE TABLE - PHASE 3 BUILDING TWIN SERVICES				
STATION	FINISHED GRADE (m)	TOP OF WATER (m)	COVER DEPTH (m)	COMMENTS
3+000	89.52	87.12	2.40	152 OFF 203 TEE
3+004.6	89.57	87.34	2.23	STORM CROSSING
3+013	89.74	87.34	2.40	VALVE & VALVE BOX
3+019.7	90.43	87.81	2.62	CAP

NOTES:
1. CONNECTIONS TO LIVE WATERMANS TO BE COMPLETED BY CITY FORCES. CONTRACTOR TO PROVIDE EXCAVATION, MATERIAL, BACKFILL AND ASSISTANCE AS REQUIRED.

CROSSING TABLE			
CROSSING No.	SERVICE	INVERT/OBVERT	SEPARATION (m)
1	SANITARY	86.75	0.39
	STORM	86.36	
2	WATER	87.19	0.50
	STORM	86.69	
3	WATER	87.07	1.46
	SANITARY	85.61	
4	SANITARY	86.57	0.34
	STORM	86.23	
5	WATER	87.58	1.19
	STORM	86.39	
6	WATER	87.55	0.56
	SANITARY	86.99	

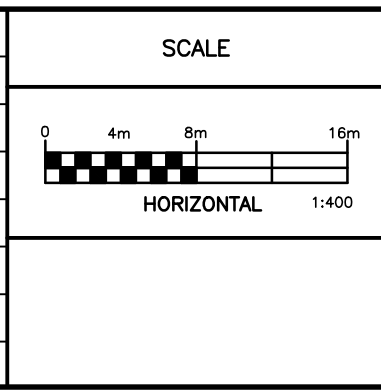
LEGEND

- PROPERTY BOUNDARY
- - - PHASING LIMIT
- - - EASEMENT
- EXISTING HYDRANT
- EXISTING CATCH BASIN
- EXISTING WATERMAIN
- V&VB EXISTING VALVE & VALVE BOX
- V&VC EXISTING VALVE & VALVE CHAMBER
- EXISTING SANITARY SEWER & MANHOLE
- EXISTING STORM SEWER & MANHOLE
- EXISTING TREE
- WATERMAIN
- V&VB VALVE & VALVE BOX
- SIEMSE CONNECTION
- CATCH BASIN
- SANITARY SEWER & MANHOLE (WATERTIGHT COVER)
- STORM SEWER & MANHOLE
- CS CLAY SEAL (CITY STD. S8)
- ▽ BUILDING ENTRANCE
- CROSSING NUMBER
- 80mm INSULATION & THICKNESS (CITY STD. W22/S35)
- BOREHOLE/MONITORING WELL (REFER TO GEOTECHNICAL)



NOTES
THE POSITION OF ALL POLE LINES, CONDUITS, WATERMANS, SEWERS AND OTHER UNDERGROUND AND OVERGROUND UTILITIES AND STRUCTURES IS NOT NECESSARILY SHOWN ON THE CONTRACT DRAWINGS, AND WHERE SHOWN, THE ACCURACY OF THE POSITION OF SUCH UTILITIES AND STRUCTURES IS NOT GUARANTEED. BEFORE STARTING WORK, DETERMINE THE EXACT LOCATION OF ALL SUCH UTILITIES AND STRUCTURES AND ASSUME ALL LIABILITY FOR DAMAGE TO THEM.
PROPERTY BOUNDARIES ARE DERIVED FROM TOPOGRAPHIC PLAN OF PART OF WATER RIDGE DEVELOPMENT BEING SHOWN AS BLOCK 21 ON DRAFT M-PLAN LOCATED NORTH OF TAWADINA ROAD AND EAST OF CODD'S ROAD, GEOGRAPHIC TOWNSHIP OF GLOUCESTER, CITY OF OTTAWA, MONUMENT-URSO SURVEYING LTD. ELEVATIONS ARE GEODETIC AND REFERRED TO THE CANADIAN GEODETIC VERTICAL DATUM (CGVD2878).

NO.	REVISION DESCRIPTION	DATE	BY
5	REVISED PER COMMENTS	10/06/26	BLM
4	ISSUED FOR BUILDING PERMIT	05/05/26	BLM
3	REISSUED FOR TENDER	23/03/26	BLM
2	REVISED PER CLC COMMENTS	27/02/26	BLM
1	ISSUED FOR REVIEW	16/01/26	BLM



Robinson Land Development
2936 Baseline Road
Suite 200
Ottawa, ON K2H 1B3
(613) 592-6060 rcii.com

DESIGN	BLM
CHECKED	SM
DRAWN	BLM
CHECKED	SM
APPROVED	BLM

WATERIDGE LIFESTYLES LTD.
WATERIDGE VILLAGE
100 BAREILLE-SNOW STREET
CITY OF OTTAWA, ON

SERVICING PLAN

PROJECT No.	25117
SURVEY MONUMENT-URSO SURVEYING LTD.	
DATED	JUNE 2026
DWG. No.	25117-S1

FILE No. D07-12-26-0020