



Andrew McCreight

ANDREW MCCREIGHT
 MANAGER, DEVELOPMENT REVIEW CENTRAL
 PLANNING, DEVELOPMENT & BUILDING SERVICES
 DEVELOPMENT DEPARTMENT, CITY OF OTTAWA

APPROVED
 By Andrew McCreight at 7:50 am, Jun 11, 2026

no.	date	revision
3	2025-12-19	RESUBMITTED FOR SFA
2	2025-09-17	RESUBMITTED FOR SFA
1	2025-06-27	ISSUED FOR SFA

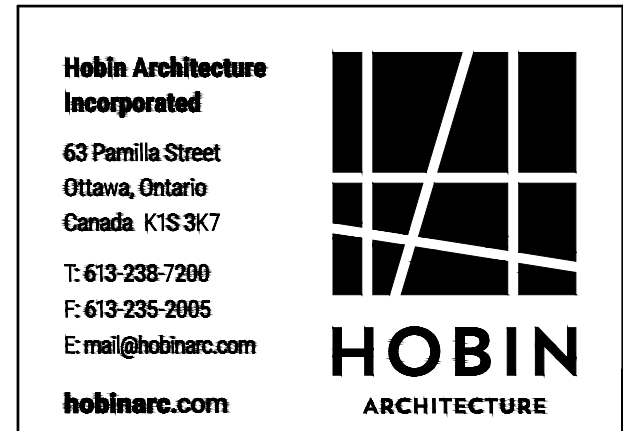
It is the responsibility of the appropriate contractor to check and verify all dimensions on site and report all errors and/or omissions to the architect.

All contractors must comply with all pertinent codes and by-laws.

Do not scale drawings.

This drawing may not be used for construction until signed.

Copyright reserved.



- NOTES:**
- IN ADDITION TO ILLUSTRATED EXTERIOR WALL MOUNTED LIGHT FIXTURES, EXTERIOR POTLIGHTS TO BE INSTALLED AT ENTRY CANOPIES.
 - BIOD FRIENDLY GLASS - AS PER CITY BIOD SAFE GUIDELINES GUIDELINE 2. Treatments to be applied for a minimum of 80% of the glass within the first 18 metres of height.
- EXAMPLES FOR CONSIDERATION INCLUDE:**
- GLASS FRET FOR ALL BALCONY RAILINGS UNDER 1.6 METRES IN HEIGHT
 - GLASS FRET FOR ALL BALCONY RAILINGS ON ROOF TERRACE LEVELS
- FINISH MATERIAL LEGEND:**
- AF ALUMINUM FLASHING
 - AP ALUMINUM PANEL
 - AS ALUMINUM SIDING
 - BV BRICK VENEER
 - CC COPPER CANOPY
 - GR GLASS RAILING
 - LF EXTERIOR LIGHT FIXTURE
 - ML METAL LOUIRE
 - MS METAL SIDING
 - PC PRECAST CONCRETE HEADERSILL
 - SG SPANDREL GLASS
 - SV STONE VENEER
 - VG VISION GLASS

1 WEST BUILDING - NORTH ELEVATION
 A3.01 1:100

PROJECT/LOCATION:
335 ROOSEVELT
 HIGHRISE RENTAL APARTMENTS
 335 ROOSEVELT AVE, OTTAWA, ONTARIO

DRAWING TITLE:
WEST BUILDING
 NORTH ELEVATION

DRAWN BY: JD	DATE: SEP. 4, 2024	SCALE: 1:100
PROJECT: 2315		DRAWING NO.:
REVISION NO.:		A-3.01



1 WEST BUILDING - SOUTH ELEVATION
A3.02 1:100

Andrew McCreight
ANDREW MCCREIGHT
 MANAGER, DEVELOPMENT REVIEW CENTRAL
 PLANNING, DEVELOPMENT & BUILDING SERVICES
 DEVELOPMENT DEPARTMENT, CITY OF OTTAWA

APPROVED
 By Andrew McCreight at 7:50 am, Jun 11, 2026

no.	date	revision
3	2025-12-19	RESUBMITTED FOR SFA
2	2025-09-17	RESUBMITTED FOR SFA
1	2025-06-27	ISSUED FOR SFA

It is the responsibility of the appropriate contractor to check and verify all dimensions on site and report all errors and/or omissions to the architect.
 All contractors must comply with all pertinent codes and by-laws.
 Do not scale drawings.
 This drawing may not be used for construction until signed.
 Copyright reserved.

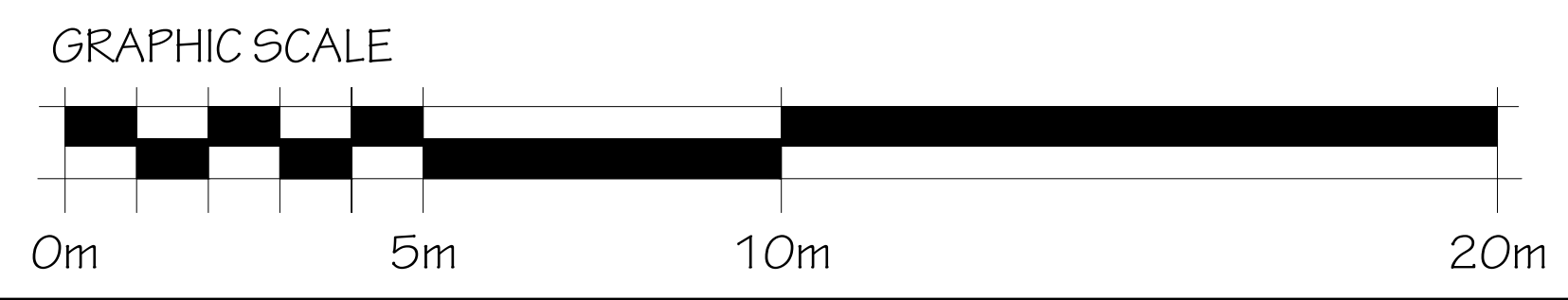


NOTES:
 IN ADDITION TO ILLUSTRATED EXTERIOR WALL MOUNTED LIGHT FIXTURES, EXTERIOR POTLIGHTS TO BE INSTALLED AT ENTRY CANOPIES.

-BIOD FRIENDLY GLASS - AS PER CITY BIOD SAFE GUIDELINES GUIDELINE 2- Treatments to be applied to a minimum of 80% of the glass within the first 18 metres of height.

EXAMPLES FOR CONSIDERATION INCLUDE:
 1. GLASS FRIT FOR ALL BALCONY RAILINGS UNDER 1.6 METRES IN HEIGHT
 2. GLASS FRIT FOR ALL BALCONY RAILINGS ON ROOF TERRACE LEVELS

- FINISH MATERIAL LEGEND:**
- [AF] ALUMINUM FLASHING
 - [AP] ALUMINUM PANEL
 - [AS] ALUMINUM SIDING
 - [BV] BRICK VENEER
 - [CC] COPPER CANOPY
 - [GR] GLASS RAILING
 - [LF] EXTERIOR LIGHT FIXTURE
 - [ML] METAL LOUVER
 - [MS] METAL SIDING
 - [PC] PRECAST CONCRETE HEADERS/SHILL
 - [SG] SPANDREL GLASS
 - [SV] STONE VENEER
 - [VG] VISION GLASS



PROJECT/LOCATION:
 335 ROOSEVELT
 HIGHRISE RENTAL APARTMENTS
 335 ROOSEVELT AVE. OTTAWA, ONTARIO

DRAWING TITLE:
 WEST BUILDING
 SOUTH ELEVATION

DRAWN BY: JD	DATE: SEP. 4, 2024	SCALE: 1:100
PROJECT: 2315		DRAWING NO.:
REVISION NO.:		A-3.02



1 WEST BUILDING - EAST ELEVATION
A3.03
1:100

Andrew McCreight
ANDREW MCCREIGHT
 MANAGER, DEVELOPMENT REVIEW CENTRAL
 PLANNING, DEVELOPMENT & BUILDING SERVICES
 DEVELOPMENT DEPARTMENT, CITY OF OTTAWA

APPROVED
 By Andrew McCreight at 7:50 am, Jun 11, 2026

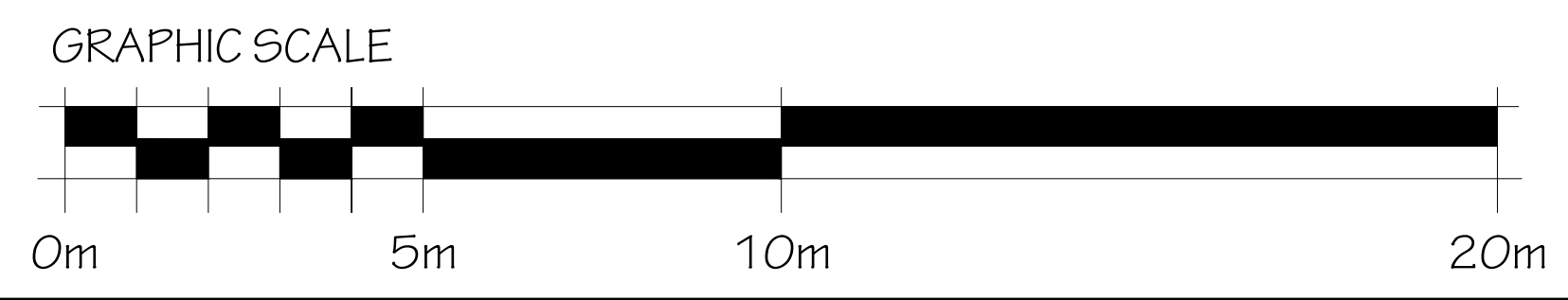
no.	date	revision
3	2025-12-19	RESUBMITTED FOR SFA
2	2025-09-17	RESUBMITTED FOR SFA
1	2025-06-27	ISSUED FOR SFA

It is the responsibility of the appropriate contractor to check and verify all dimensions on site and report all errors and/or omissions to the architect.
 All contractors must comply with all pertinent codes and by-laws.
 Do not scale drawings.
 This drawing may not be used for construction until signed.
 Copyright reserved.



Hobin Architecture Incorporated
 63 Pamela Street
 Ottawa, Ontario
 Canada K1S 3K7
 T: 613-238-7200
 F: 613-238-2605
 E: andrew@hobin.com
hobin.com

- NOTES:**
- IN ADDITION TO ILLUSTRATED EXTERIOR WALL MOUNTED LIGHT FIXTURES, EXTERIOR POTLIGHTS TO BE INSTALLED AT ENTRY CANOPIES.
 - BIRD FRIENDLY GLASS - AS PER CITY BIRD SAFE GUIDELINES GUIDELINE 2. Treatments to be applied to a minimum of 90% of the glass within the first 1.8 metres of height.
- EXAMPLES FOR CONSIDERATION INCLUDE:**
1. GLASS FIT FOR ALL BALCONY RAILINGS UNDER 1.0 METRES IN HEIGHT
 2. GLASS FIT FOR ALL BALCONY RAILINGS ON ROOF TERRACE LEVELS
- FINISH MATERIAL LEGEND:**
- AF ALUMINUM FLASHING
 - AP ALUMINUM PANEL
 - AS ALUMINUM SIDING
 - BV BRICK VENEER
 - CC COPPER CANOPY
 - GR GLASS RAILING
 - LF EXTERIOR LIGHT FIXTURE
 - ML METAL LOUVER
 - MS METAL SIDING
 - PC PRECAST CONCRETE HEADERSILL
 - SG SPANDREL GLASS
 - SV STONE VENEER
 - VG VISION GLASS

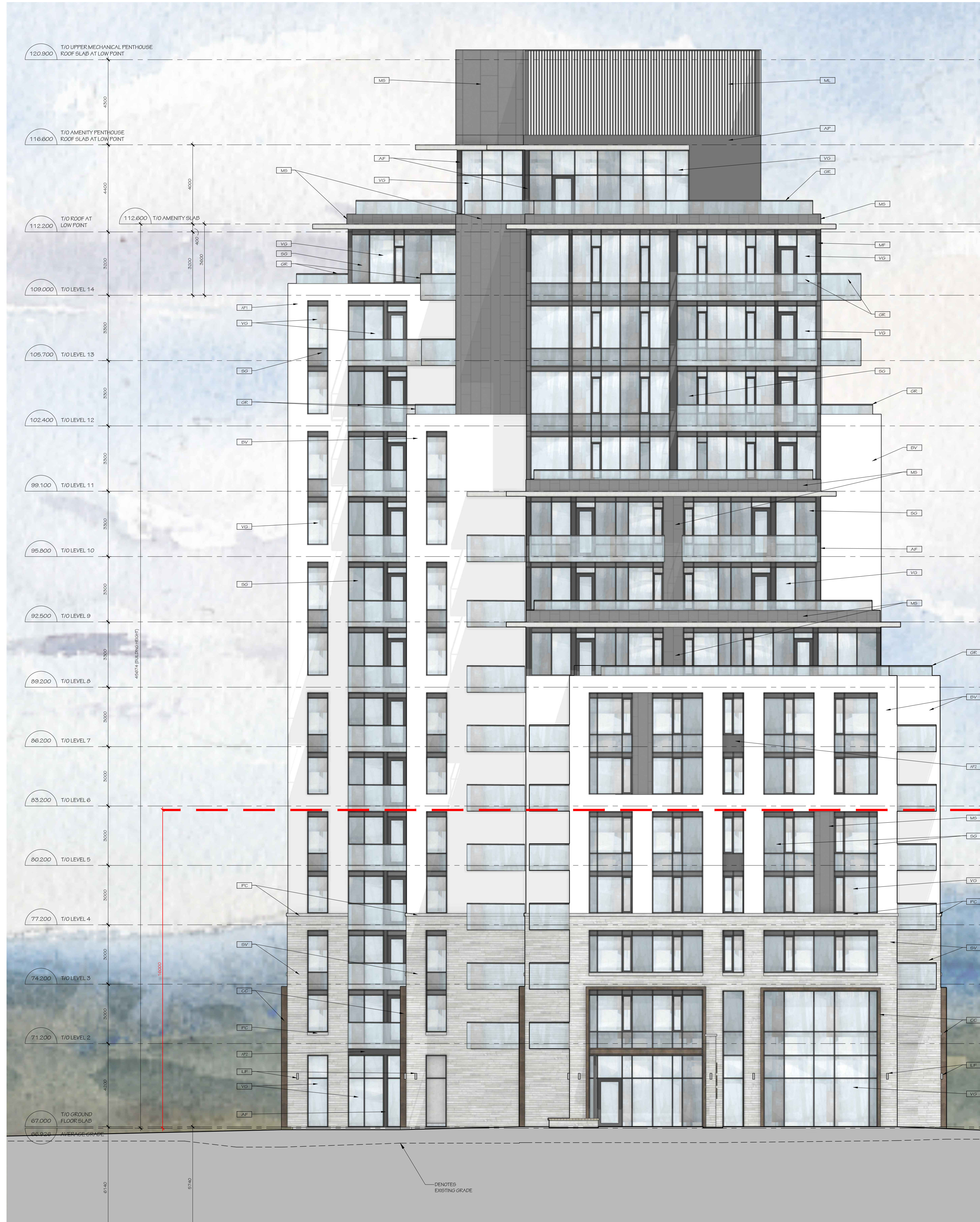


PROJECT/LOCATION:
 335 ROOSEVELT
 HIGHRISE RENTAL APARTMENTS
 335 ROOSEVELT AVE. OTTAWA, ONTARIO

DRAWING TITLE:
 WEST BUILDING
 EAST ELEVATION

DRAWN BY: JD **DATE:** SEP. 4, 2024 **SCALE:** 1:100

PROJECT: 2315 **DRAWING NO.:** A-3.03 **REVISION NO.:**



1 WEST BUILDING - WEST ELEVATION
A3.04
1:100

Andrew McCreight
ANDREW MCCREIGHT
 MANAGER, DEVELOPMENT REVIEW CENTRAL
 PLANNING, DEVELOPMENT & BUILDING SERVICES
 DEVELOPMENT DEPARTMENT, CITY OF OTTAWA

APPROVED
 By Andrew McCreight at 7:50 am, Jun 11, 2026

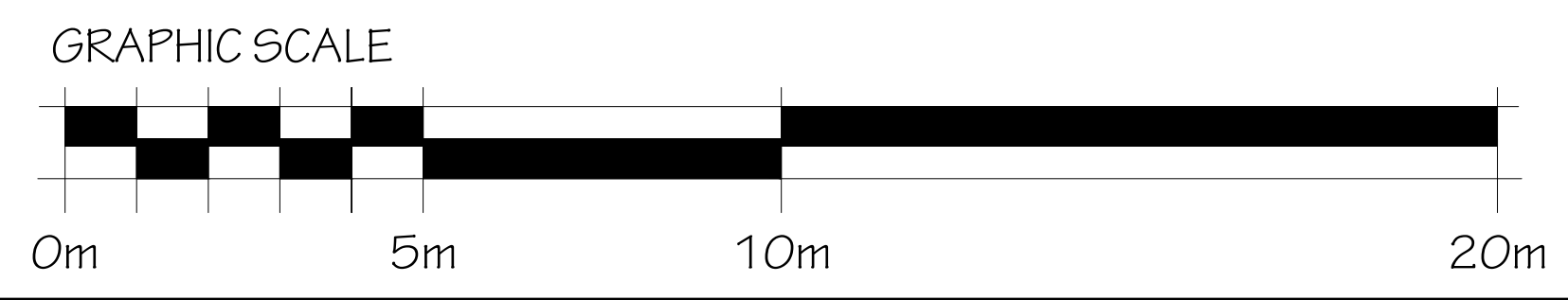
no.	date	revision
3	2025-12-19	RESUBMITTED FOR SFA
2	2025-09-17	RESUBMITTED FOR SFA
1	2025-06-27	ISSUED FOR SFA

It is the responsibility of the appropriate contractor to check and verify all dimensions on site and report all errors and/or omissions to the architect.
 All contractors must comply with all pertinent codes and by-laws.
 Do not scale drawings.
 This drawing may not be used for construction until signed.
 Copyright reserved.



Hobin Architecture Incorporated
 63 Pamela Street
 Ottawa, Ontario
 Canada K1S 3K7
 T: 613-238-7200
 F: 613-238-2005
 E: and@hobin.com
 hobin.com

- NOTES:**
- IN ADDITION TO ILLUSTRATED EXTERIOR WALL MOUNTED LIGHT FIXTURES, EXTERIOR LIGHTS TO BE INSTALLED AT ENTRY CANOPIES.
 - BIRD FRIENDLY GLASS - AS PER CITY BIRD SAFE GUIDELINES GUIDELINE 2. Treatments to be applied to a maximum of 90% of the glass within the first 18 metres of height.
- EXAMPLES FOR CONSIDERATION INCLUDE:**
1. GLASS FIT FOR ALL BALCONY RAILINGS UNDER 1.6 METRES IN HEIGHT
 2. GLASS FIT FOR ALL BALCONY RAILINGS ON ROOF TERRACE LEVELS
- FINISH MATERIAL LEGEND:**
- [AF] ALUMINUM FLASHING
 - [AP] ALUMINUM PANEL
 - [AS] ALUMINUM SIDING
 - [BV] BRICK VENEER
 - [CC] COPPER CANOPY
 - [GR] GLASS RAILING
 - [LF] EXTERIOR LIGHT FIXTURE
 - [ML] METAL LOUVRE
 - [MS] METAL SIDING
 - [PC] PRECAST CONCRETE HEADERSILL
 - [SG] SPANDREL GLASS
 - [SV] STONE VENEER
 - [VG] VISION GLASS



PROJECT/LOCATION:
 335 ROOSEVELT
 HIGHRISE RENTAL APARTMENTS
 335 ROOSEVELT AVE. OTTAWA, ONTARIO

DRAWING TITLE:
 WEST BUILDING
 WEST ELEVATION

DRAWN BY: JD **DATE:** SEP. 4, 2024 **SCALE:** 1:100

PROJECT: 2315 **DRAWING NO.:** A-3.04 **REVISION NO.:**

Plan No: 18281



Andrew McCreight
ANDREW MCCREIGHT
 MANAGER, DEVELOPMENT REVIEW CENTRAL
 PLANNING, DEVELOPMENT & BUILDING SERVICES
 -DEVELOPMENT DEPARTMENT, CITY OF OTTAWA

APPROVED
 By Andrew McCreight at 7:50 am, Jun 11, 2026

3	2025-12-19	RESUBMITTED FOR SFA
2	2025-09-17	RESUBMITTED FOR SFA
1	2025-06-27	ISSUED FOR SFA

no. date revision
 It is the responsibility of the appropriate contractor to check and verify all dimensions on site and report all errors and/or omissions to the architect.
 All contractors must comply with all pertinent codes and by-laws.
 Do not scale drawings.
 This drawing may not be used for construction until signed.
 Copyright reserved.



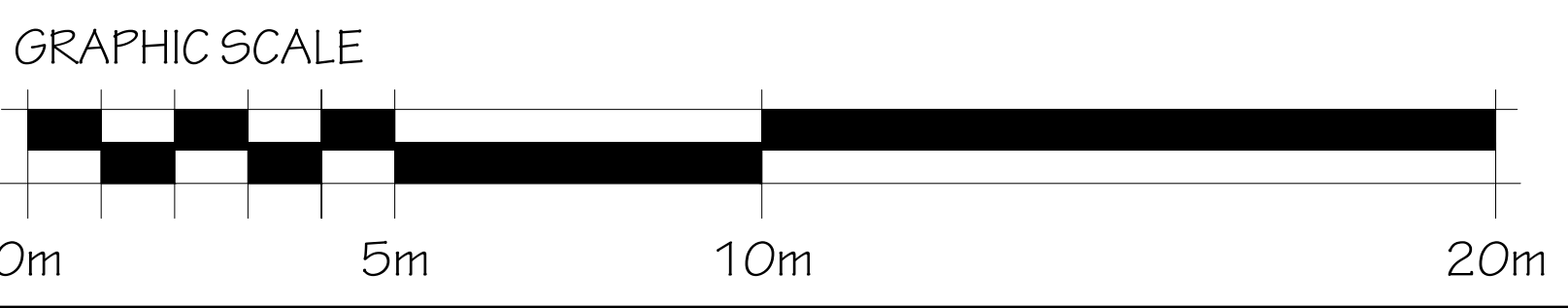
Hobin Architecture Incorporated
 63 Pamela Street
 Ottawa, Ontario
 Canada K1S 3K7
 T: 613-238-7200
 F: 613-238-2605
 E: info@hobin.com
 hobin.com

NOTES:
 IN ADDITION TO ILLUSTRATED EXTERIOR WALL MOUNTED LIGHT FIXTURES, EXTERIOR LIGHTS TO BE INSTALLED AT ENTRY CANOPIES.
 BIRD-FRIENDLY GLASS - AS PER CITY BIRD SAFE GUIDELINES GUIDELINE 2. Treatments to be applied to a maximum of 50% of the glass within the first 18 metres of height.

- EXAMPLES FOR CONSIDERATION INCLUDE:
1. GLASS FIT FOR ALL BALCONY RAILINGS UNDER 1.6 METRES IN HEIGHT
 2. GLASS FIT FOR ALL BALCONY RAILINGS ON ROOF TERRACE LEVELS

FINISH MATERIAL LEGEND:

AF	ALUMINUM FLASHING
AP	ALUMINUM PANEL
AS	ALUMINUM SIDING
BV	BRICK VENEER
CC	COPPER CANOPY
GR	GLASS RAILING
LF	EXTERIOR LIGHT FIXTURE
ML	METAL LOUVER
MS	METAL SIDING
PC	PRECAST CONCRETE HEADERSILL
SG	SPANDREL GLASS
SV	STONE VENEER
VG	VISION GLASS



1 EAST BUILDING - NORTH ELEVATION
 A3.05 1:100

PROJECT/LOCATION:
 335 ROOSEVELT
 HIGHRISE RENTAL APARTMENTS
 335 ROOSEVELT AVE, OTTAWA, ONTARIO

DRAWING TITLE:
 EAST BUILDING
 NORTH ELEVATION

DRAWN BY:	DATE:	SCALE:
JD	SEP. 4, 2024	1:100
PROJECT:	DRAWING NO.:	REVISION NO.:
2315	A-3.05	

File No: D07-12-25-0097
 Plan No: 18281

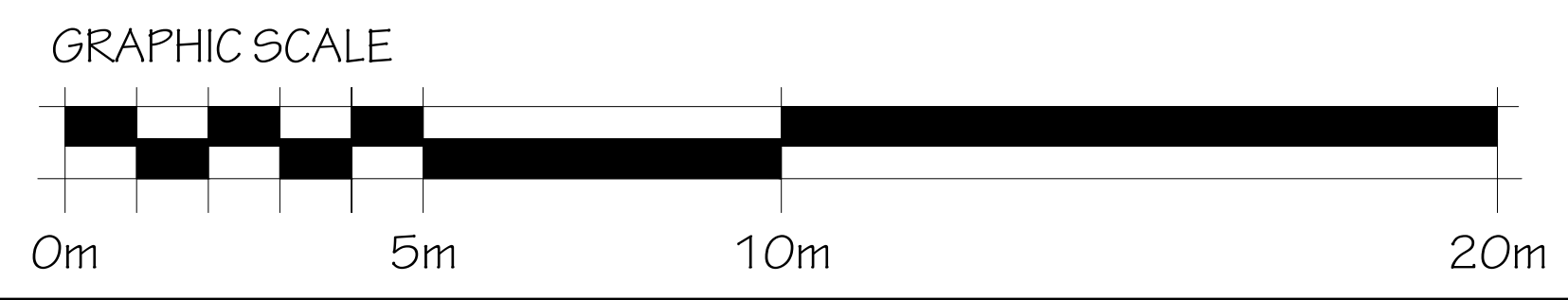


1 EAST BUILDING - SOUTH ELEVATION
A3.06 1:100

Andrew McCreight
ANDREW MCCREIGHT
MANAGER, DEVELOPMENT REVIEW CENTRAL
PLANNING, DEVELOPMENT & BUILDING SERVICES
DEVELOPMENT DEPARTMENT, CITY OF OTTAWA

APPROVED
By Andrew McCreight at 7:50 am, Jun 11, 2026

- NOTES:**
- IN ADDITION TO ILLUSTRATED EXTERIOR WALL MOUNTED LIGHT FIXTURES, EXTERIOR POTLIGHTS TO BE INSTALLED AT ENTRY CANOPIES.
 - BIOD FRIENDLY GLASS - AS PER CITY BIOD SAFE GUIDELINES GUIDELINE 2. Treatments to be applied to a maximum of 30% of the glass within the first 1.8 metres of height.
- EXAMPLES FOR CONSIDERATION INCLUDE:**
- GLASS FRIT FOR ALL BALCONY RAILINGS UNDER 1.8 METRES IN HEIGHT
 - GLASS FRIT FOR ALL BALCONY RAILINGS ON ROOF TERRACE LEVELS
- FINISH MATERIAL LEGEND:**
- AF ALUMINUM FLASHING
 - AP ALUMINUM PANEL
 - AS ALUMINUM SIDING
 - BV BRICK VENEER
 - CC COPPER CANOPY
 - GR GLASS RAILING
 - LF EXTERIOR LIGHT FIXTURE
 - ML METAL LOUVER
 - MS METAL SIDING
 - PC PRECAST CONCRETE HEADERSILL
 - SG SPANDREL GLASS
 - SV STONE VENEER
 - VG VISION GLASS



no.	date	revision
3	2025-12-19	RESUBMITTED FOR SFA
2	2025-09-17	RESUBMITTED FOR SFA
1	2025-06-27	ISSUED FOR SFA

It is the responsibility of the appropriate contractor to check and verify all dimensions on site and report all errors and/or omissions to the architect.
All contractors must comply with all pertinent codes and by-laws.
Do not scale drawings.
This drawing may not be used for construction until signed.
Copyright reserved.

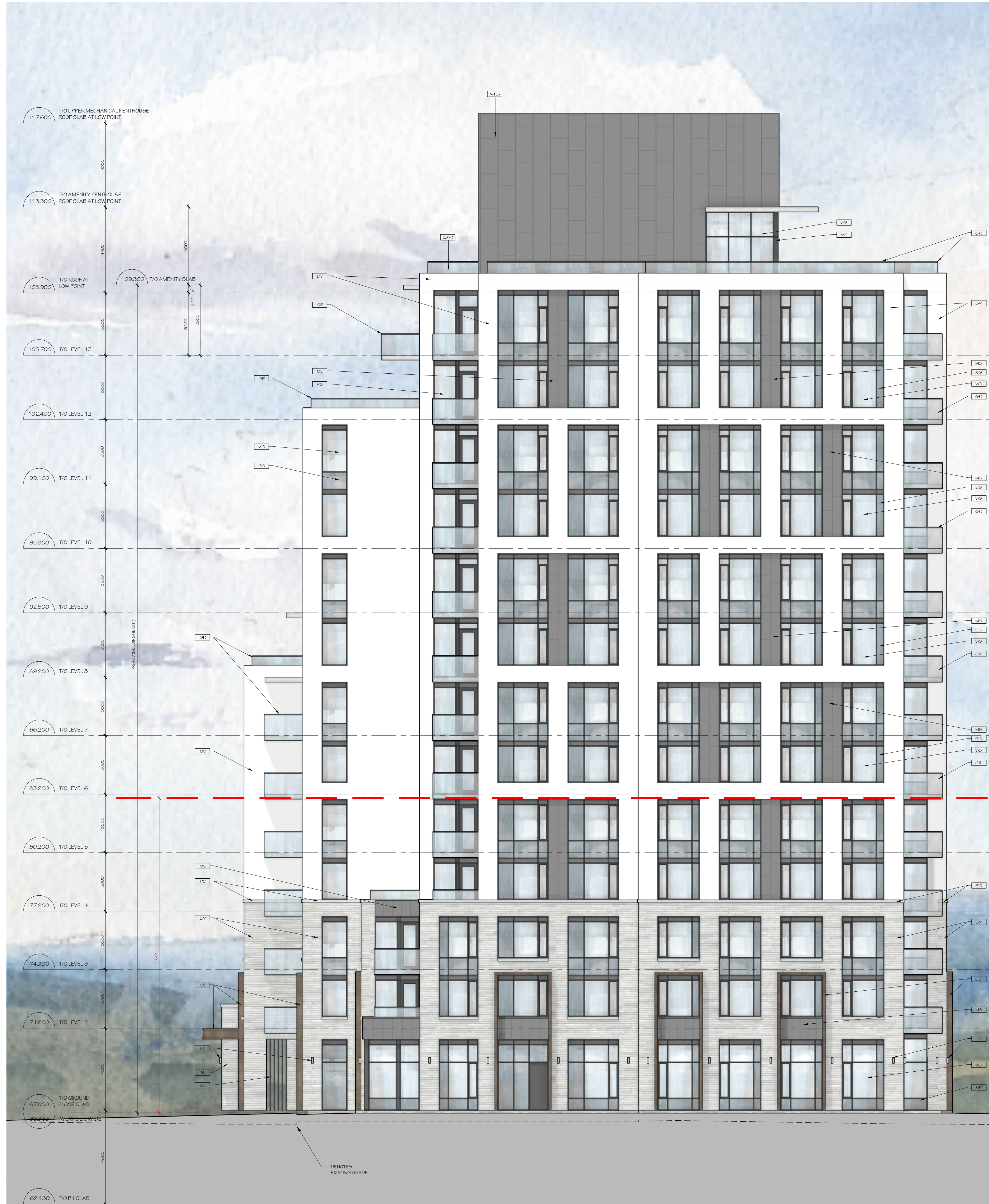


Hobin Architecture Incorporated
63 Pamela Street
Ottawa, Ontario
Canada K1S 3K7
T: 613-238-7200
F: 613-238-2605
E: info@hobinarc.com
hobinarc.com

PROJECT/LOCATION:
335 ROOSEVELT
HIGHRISE RENTAL APARTMENTS
335 ROOSEVELT AVE, OTTAWA, ONTARIO

DRAWING TITLE:
EAST BUILDING
SOUTH ELEVATION

DRAWN BY: JD	DATE: SEP. 4, 2024	SCALE: 1:100
PROJECT: 2315		DRAWING NO.:
REVISION NO.:		A-3.06



1 EAST BUILDING - EAST ELEVATION
A3.07 1:100

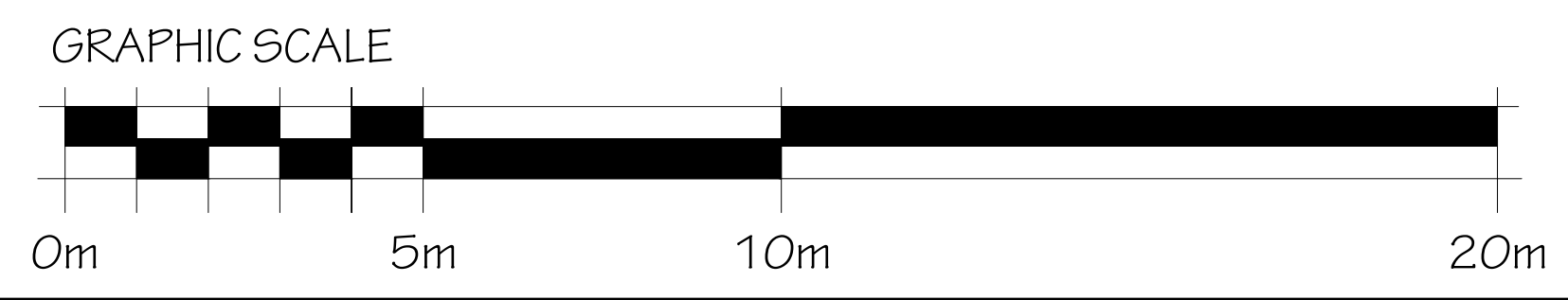
Andrew McCreight
ANDREW MCCREIGHT
 MANAGER, DEVELOPMENT REVIEW CENTRAL
 PLANNING, DEVELOPMENT & BUILDING SERVICES
 DEVELOPMENT DEPARTMENT, CITY OF OTTAWA

APPROVED
 By Andrew McCreight at 7:50 am, Jun 11, 2026

NOTES:
 -IN ADDITION TO ILLUSTRATED EXTERIOR WALL MOUNTED LIGHT FIXTURES, EXTERIOR FOLIAGES TO BE INSTALLED AT ENTRY CANOPIES.
 -BIOD FRIENDLY GLASS - AS PER CITY BIOD SAFE GUIDELINES GUIDELINE 2. Treatments to be applied to a minimum of 80% of the glass within the first 1.8 metres of height.

EXAMPLES FOR CONSIDERATION INCLUDE:
 1. GLASS FRET FOR ALL BALCONY RAILINGS UNDER 1.8 METRES IN HEIGHT
 2. GLASS FRET FOR ALL BALCONY RAILINGS ON ROOF TERRACE LEVELS

- FINISH MATERIAL LEGEND:**
- [AF] ALUMINUM FLASHING
 - [AP] ALUMINUM PANEL
 - [AS] ALUMINUM SIDING
 - [BV] BRICK VENEER
 - [CC] COPPER CANOPY
 - [GR] GLASS RAILING
 - [LF] EXTERIOR LIGHT FIXTURE
 - [ML] METAL LOUVER
 - [MS] METAL SIDING
 - [PC] PRECAST CONCRETE HEADERSILL
 - [SG] SPANDREL GLASS
 - [SV] STONE VENEER
 - [VSG] VISION GLASS



no.	date	revision
3	2025-12-19	RESUBMITTED FOR SFA
2	2025-09-17	RESUBMITTED FOR SFA
1	2025-06-27	ISSUED FOR SFA

It is the responsibility of the appropriate contractor to check and verify all dimensions on site and report all errors and/or omissions to the architect.
 All contractors must comply with all pertinent codes and by-laws.
 Do not scale drawings.
 This drawing may not be used for construction until signed.
 Copyright reserved.



PROJECT/LOCATION:
 335 ROOSEVELT
 HIGHRISE RENTAL APARTMENTS
 335 ROOSEVELT AVE, OTTAWA, ONTARIO

DRAWING TITLE:
 EAST BUILDING
 EAST ELEVATION

DRAWN BY: JD	DATE: SEP. 4, 2024	SCALE: 1:100
PROJECT: 2315		DRAWING NO.: A-3.07
REVISION NO.:		Plan No: 18281

File No: D07-12-25-0097

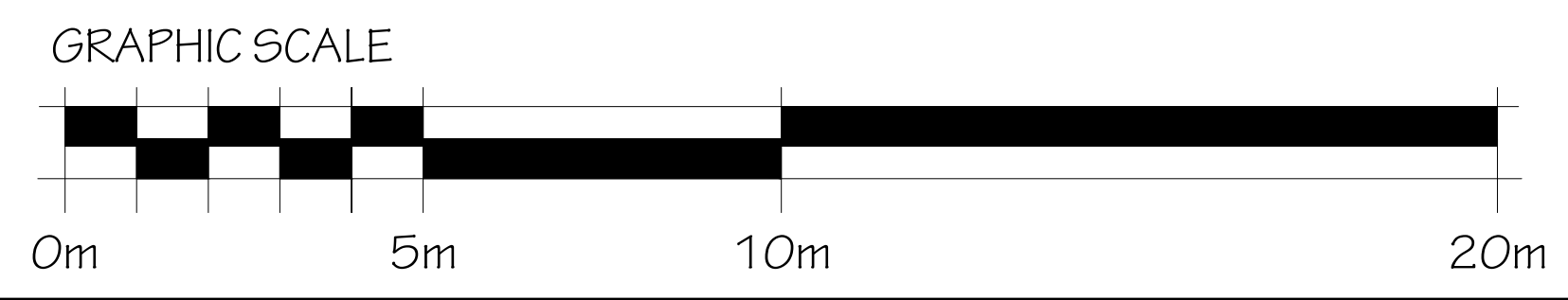


1 EAST BUILDING - WEST ELEVATION
A3.08 1:100

Andrew McCreight
ANDREW MCCREIGHT
 MANAGER, DEVELOPMENT REVIEW CENTRAL
 PLANNING, DEVELOPMENT & BUILDING SERVICES
 DEVELOPMENT DEPARTMENT, CITY OF OTTAWA

APPROVED
 By Andrew McCreight at 7:50 am, Jun 11, 2026

- NOTES:**
- IN ADDITION TO ILLUSTRATED EXTERIOR WALL MOUNTED LIGHT FIXTURES, EXTERIOR LIGHTS TO BE INSTALLED AT ENTRY CANOPIES.
 - BIRD FRIENDLY GLASS - AS PER CITY BIRD SAFE GUIDELINES GUIDELINE 2. Treatments to be applied to a maximum of 80% of the glass within the first 3.0 metres of height.
- EXAMPLES FOR CONSIDERATION INCLUDE:**
1. GLASS FIT FOR ALL BALCONY RAILINGS UNDER 1.0 METRES IN HEIGHT
 2. GLASS FIT FOR ALL BALCONY RAILINGS ON ROOF TERRACE LEVELS
- FINISH MATERIAL LEGEND:**
- AF ALUMINUM FLASHING
 - AP ALUMINUM PANEL
 - AS ALUMINUM SIDING
 - BV BRICK VENEER
 - CC COPPER CANOPY
 - GR GLASS RAILING
 - LF EXTERIOR LIGHT FIXTURE
 - ML METAL LOUVER
 - MS METAL SIDING
 - PC PRECAST CONCRETE HEADERSILL
 - SG SPANDREL GLASS
 - SV STONE VENEER
 - VG VISION GLASS



no.	date	revision
3	2025-12-19	ISSUED FOR SFA
2	2025-09-17	ISSUED FOR SFA
1	2025-06-27	ISSUED FOR SFA

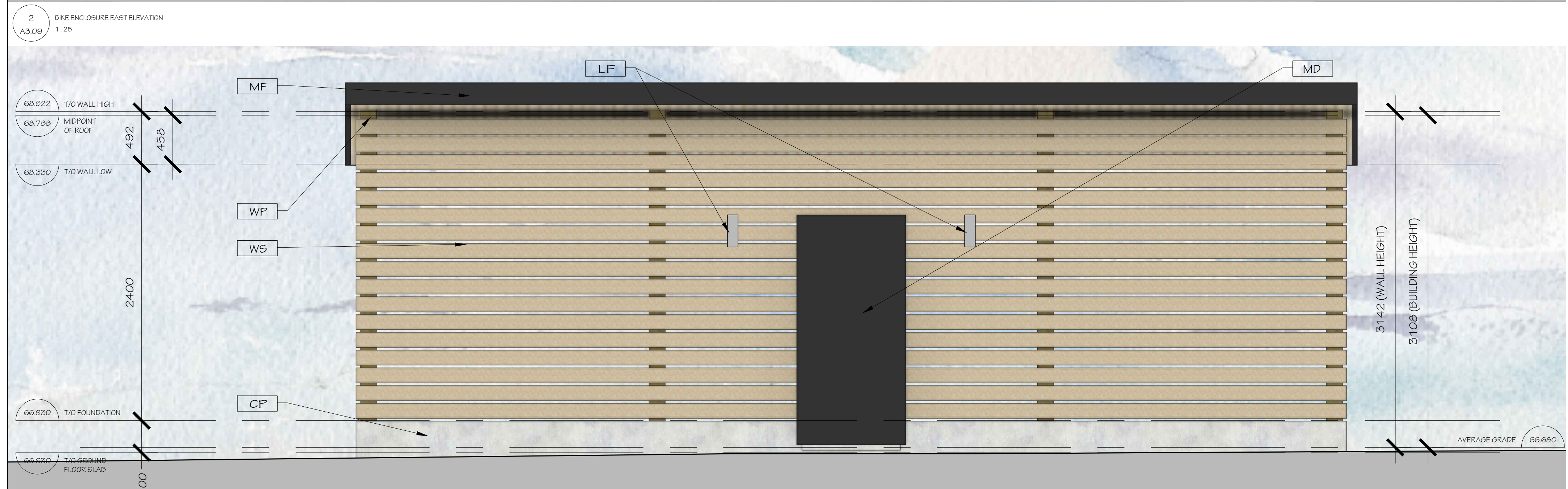
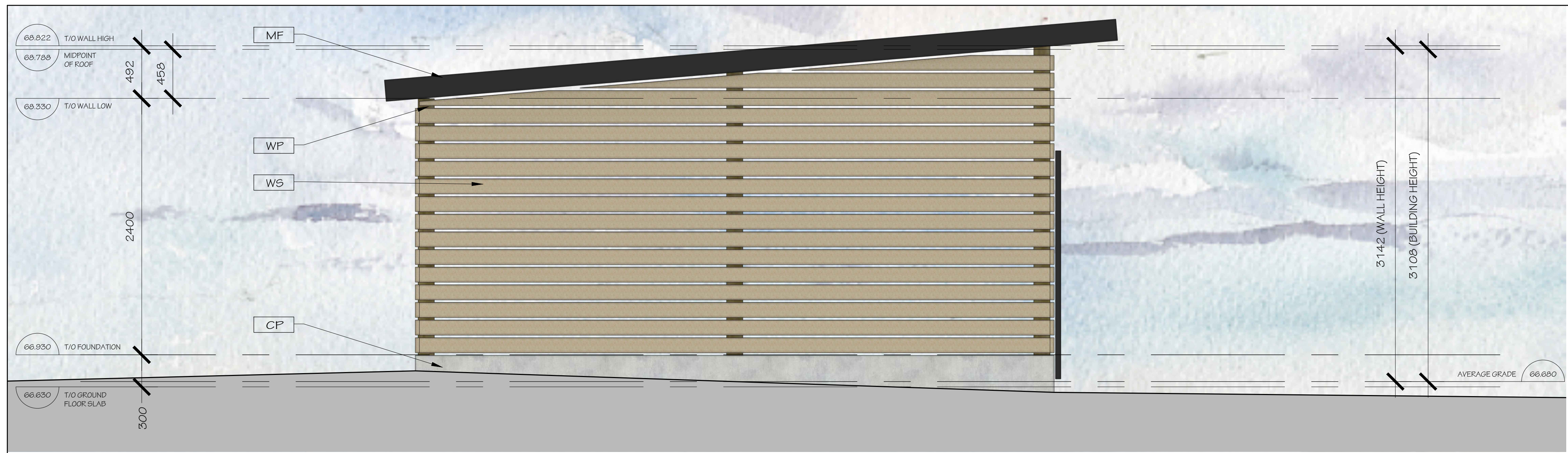
It is the responsibility of the appropriate contractor to check and verify all dimensions on site and report all errors and/or omissions to the architect.
 All contractors must comply with all pertinent codes and by-laws.
 Do not scale drawings.
 This drawing may not be used for construction until signed.
 Copyright reserved.



PROJECT/LOCATION:
335 ROOSEVELT
HIGHRISE RENTAL APARTMENTS
 335 ROOSEVELT AVE, OTTAWA, ONTARIO

DRAWING TITLE:
EAST BUILDING
WEST ELEVATION

DRAWN BY:	DATE:	SCALE:
JD	SEP. 4, 2024	1:100
PROJECT:	2315	
DRAWING NO.:	A-3.08	
REVISION NO.:		



Andrew McCreight
ANDREW MCCREIGHT
 MANAGER, DEVELOPMENT REVIEW CENTRAL
 PLANNING, DEVELOPMENT & BUILDING SERVICES
 DEVELOPMENT DEPARTMENT, CITY OF OTTAWA

APPROVED
 By Andrew McCreight at 7:50 am, Jun 11, 2026

no.	date	revision
2	2025-12-19	RESUBMITTED FOR SPA
1	2025-09-17	RESUBMITTED FOR SPA

It is the responsibility of the appropriate contractor to check and verify all dimensions on site and report all errors and/or omissions to the architect.
 All contractors must comply with all pertinent codes and by-laws.
 Do not scale drawings.
 This drawing may not be used for construction until signed.
 Copyright reserved.



PROJECT/LOCATION:
335 ROOSEVELT HIGHRISE RENTAL APARTMENTS
335 ROOSEVELT AVE. OTTAWA, ONTARIO

DRAWING TITLE:
EXTERIOR BIKE ENCLOSURE ELEVATIONS

DRAWN BY: JD	DATE: SEP. 4, 2024	SCALE: AS NOTED
PROJECT: 2315		DRAWING NO.:
		A-3.09
		REVISION NO.:

- FINISH MATERIAL LEGEND:
- CEMENT FLASHING
 - EXTERIOR LIGHT FIXTURE
 - METAL DOOR
 - METAL FLASHING
 - METAL ROOFING
 - WOOD POST

