

LEGEND / SYMBOL

- PROPOSED DECIDUOUS TREE
DETAIL 1/L2.01
- PROPOSED SHRUBS,
DETAIL 1/L2.01
- PROPOSED
PERENNIALS, ORNAMENTAL GRASSES
DETAIL 1/L2.01
- PROPOSED BICYCLE RACK
DETAIL 2/L2.01
- SPA APPLICATION PHASE LINE

GENERAL NOTES

- 1 This drawing shall be read in conjunction with all relevant Architectural, Engineering and related Drawings and Documents.
- 2 Refer to Engineering Drawings for Grading and Servicing.
- 3 Refer to Architectural Drawings for Site layout.
- 4 Contractor shall provide the location(s) of all services/utilities by consulting Municipal Authorities and Utility companies and shall be responsible for adequate protection from damage during construction.
- 5 Plant material shall be No. 1 Grade and shall comply with the Metric Guide Specifications For Nursery Stock (latest edition), published by the Canadian Nursery Trades Association.
- 6 Plant Material locations are **Schematic / Approximate only**. Contractor shall stake out locations on site prior to work.
- 7 Contractor shall guarantee all plant material for a period of one (1) full year from the date of final acceptance.
- 8 **Shrubs** shall be planted in a continuous prepared bed of 450mm depth planting soil mix covered over with 75mm depth composted pine mulch to finish grade.
- 9 **Perennials and Ornamental Grasses** shall be planted in a continuous prepared bed of 450mm depth planting soil mix covered over with 75mm depth composted pine mulch to finish grade.
- 10 Reinststate all areas damaged or disturbed beyond the limit of Work.
- 11 Plant Material substitutions shall not be permitted without written approval from the Consultant.
- 12 Contractor shall advise Consultant a minimum of **48hrs.** prior to proceeding landscape work and any required Field Reviews.
- 13 **THIS PLAN HAS BEEN PREPARED FOR MUNICIPAL SITE PLAN APPROVAL ONLY AND MAY NOT BE USED FOR ANY OTHER PURPOSE.**

PLANT MATERIAL SCHEDULE

(Private Ownership)

CODE	BOTANICAL NAME	COMMON NAME	QTY.	SIZE	REMARKS / (N) NATIVE
DECIDUOUS TREES					
AFJ	ACER x FREEMANII JEFFERSRED	AUTUMN BLAZE MAPLE	4	50mm cal	B&B, single-stem / N
GT	GLEDTISIA TRIACANTHOS SKYLINE	SKYLINE HONEYLOCUST	2	50mm cal	B&B, single-stem
SHRUBS					
JSW	JUNIPERUS SCOPULORUM 'WICHITA BLUE'	WICHITA BLUE JUNIPER	14	100cm ht	potted, 100cm o/c
ST	SPIRAEA TOMENTOSA	STEEPLEBUSH	33	50cm ht	potted, 100cm o/c / N
PERENNIALS					
Ast	ASTER novae-angliae	NEW ENGLAND ASTER	20	1 gal. pot.	plant 60cm o/c / N
Ech	ECHINACEA angustifolia	NARROW-LEAF CONEFLOWER	27	1 gal. pot.	plant 60cm o/c / N
Li	LIATRIS spicata	DENSE BLAZING STAR	22	1 gal. pot.	plant 60cm o/c / N
Rud	RUDBECKIA fulgida 'Goldsturm'	BLACK-EYED SUSAN	57	1 gal. pot.	plant 60cm o/c / N
Sal	'SALVIA varieg'	RUSSIAN SAGE	41	1 gal. pot.	plant 60cm o/c
ORNAMENTAL GRASSES					
Cal	CALAMAGROSTIS x acutiflora 'Karl Foerster'	KARL FOERSTER REED GRASS	48	1 gal. pot.	plant 75cm o/c
Spo	SPOROBOLUS heterolepis	PRAIRE DROPSEED	33	1 gal. pot.	plant 75cm o/c / N

TREE CANOPY COVER DATA
(ASSUMED AT 40 YR. MATURITY)

LARGE DECIDUOUS TREES: 10m Dia. Spread
78m² per x 6 = 468m²

TOTAL TREE CANOPY COVER: 468m²
APPROX. TOTAL APPLICATION SITE AREA minus BLDG. FOOTPRINT: 4760m²

% TREE CANOPY COVER: 9.8



OWNER:
NORTH AMERICAN DEVELOPMENT GROUP
2851 John St., Suite 1, Markham, ON L3R 5R7

ARCHITECT:
SCOLER LEE BORENSTEIN + ASSOCIATES
900-60 St. Clair Ave., E, Toronto, ON M4T 1N5

ONTARIO LAND SURVEYOR:
FAIRHALL, MOFFATT, WOODLAND LTD.
100-600 Terry Fox Dr., Kanata, ON K2L 4B6

CIVIL ENGINEER:
ARCADIS
500-333 Preston St., Ottawa ON K1S 5N4

LEGAL DESCRIPTION:
Part of Lot 15, Concession 3 (Rideau Front),
Geographic Township of Nepean,
City of Ottawa.

FOR APPROVAL ONLY

no.	date	revision
3.	JUNE 01/26	PER CLIENT REQUEST CHANGES
2.	MAY 12/26	PER SITE CHANGES / CITY COMMENTS
1.	NOV. 21/25	ISSUE FOR SITE PLAN APPROVAL

no. date revision

North Arrow

Stamp

Contractor shall check and verify all dimensions on site and report all errors and/or omissions to the Consultant.

Work to be done in accordance with all applicable codes and by-laws.

Do not scale Drawing.

This Drawing shall not be used for construction until signed by the Consultant.

Copyright reserved. This Drawing is the exclusive property of Levstek Consultants Inc. and shall not be used without consent.

Consultant

LEVSTEK CONSULTANTS
LANDSCAPE ARCHITECTS

5871 Hugh Crescent - Ottawa - Ontario - K0A 2W6

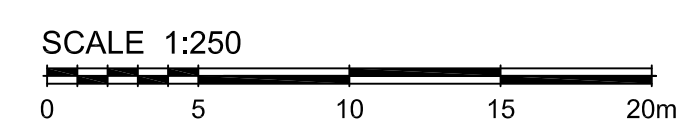
Project:
BARRHERD TOWN CENTRE

3777 STRANDHERD DRIVE
NEPEAN, ONTARIO

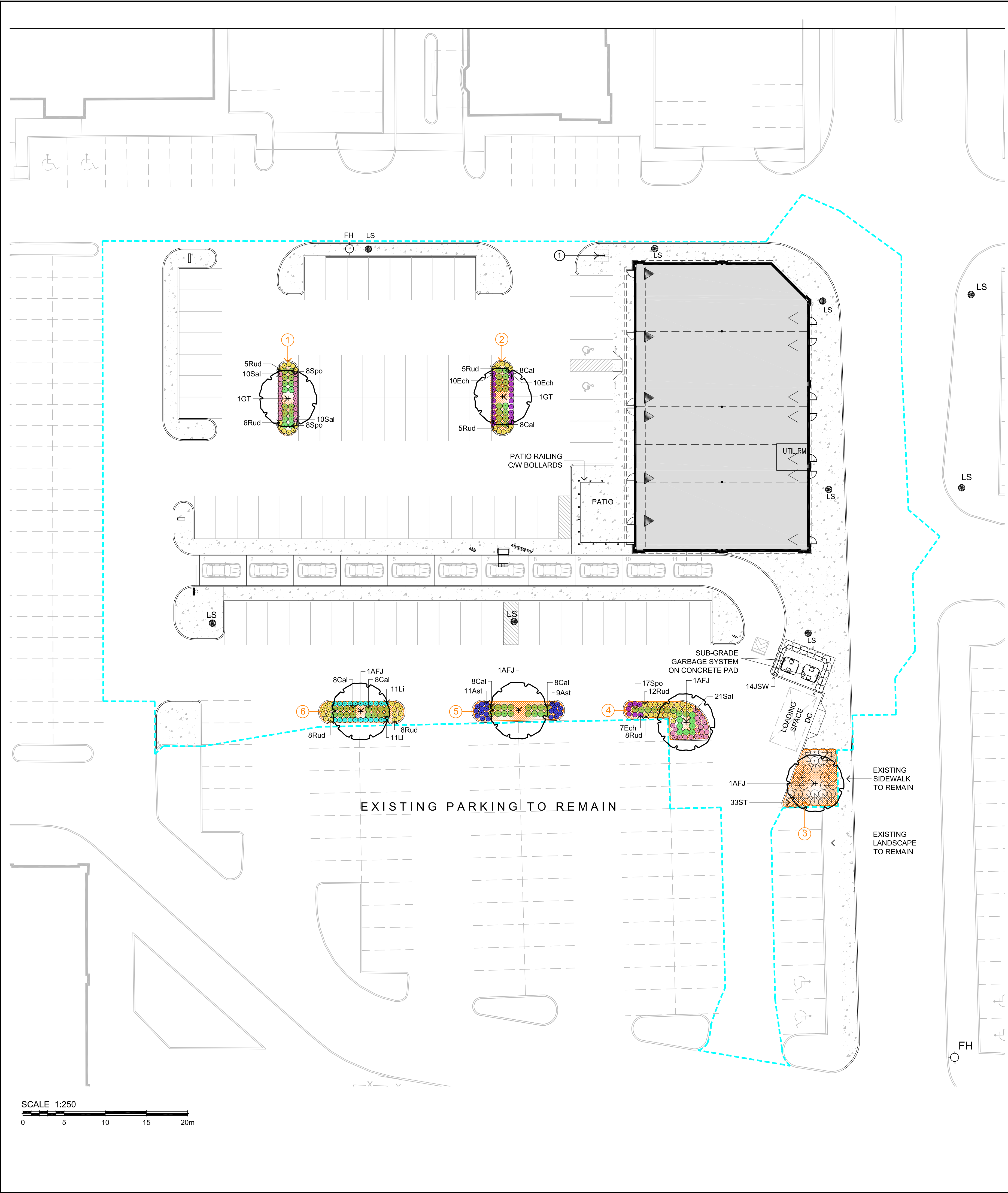
Drawing Title
LANDSCAPE PLAN

Drawn	MGB	Date	OCT. 2025	Drawing No.	L1.01
Scale	1:250	Project No.	1254		

THIS DRAWING IS COLOUR DEPENDENT.
NON-COLOUR COPIES MAY ALTER
INTERPRETATION.



File No. D07-12-25-0157 / Plan No. 19416



SOIL VOLUME DATA

Soil Area	Soil Area (m ²)	Soil Depth (m)*	Soil Volume (m ³)	Tree Quantity	Soil Volume per tree (m ³)
1	20.1	1.3	26.13	1	26.13
2	23.3	1.3	30.29	1	30.29
3	36.7	1.3	47.71	1	47.71
4	29.1	1.3	37.83	1	37.83
5	24.1	1.3	31.33	1	31.33
6	25.2	1.3	32.76	1	32.76

LEGEND / SYMBOL

- PROPOSED DECIDUOUS TREE
DETAIL: 1/L2.01
- PROPOSED SHRUBS,
DETAIL: 1/L2.01
- PROPOSED PERENNIALS, ORNAMENTAL GRASSES
DETAIL: 1/L2.01
- PROPOSED BICYCLE RACK
DETAIL: 2/L2.01
- SPA APPLICATION PHASE LINE
- PROPOSED SOIL VOLUME DATA (PER SOIL AREA)
(REFER TO SOIL VOLUME DATA CHART)

GENERAL NOTES

- 1 This drawing shall be read in conjunction with all relevant Architectural, Engineering and related Drawings and Documents.
- 2 Refer to Engineering Drawings for Grading and Servicing.
- 3 Refer to Architectural Drawings for Site layout.
- 4 Contractor shall provide the location(s) of all services/utilities by consulting Municipal Authorities and Utility companies and shall be responsible for adequate protection from damage during construction.
- 5 Plant material shall be No. 1 Grade and shall comply with the Metric Guide Specifications For Nursery Stock (latest edition), published by the Canadian Nursery Trades Association.
- 6 Plant Material locations are **Schematic / Approximate only**. Contractor shall stake out locations on site prior to work.
- 7 Contractor shall guarantee all plant material for a period of one (1) full year from the date of final acceptance.
- 8 **Shrubs** shall be planted in a continuous prepared bed of 450mm depth planting soil mix covered over with 75mm depth composted pine mulch to finish grade.
- 9 **Perennials and Ornamental Grasses** shall be planted in a continuous prepared bed of 450mm depth planting soil mix covered over with 75mm depth composted pine mulch to finish grade.
- 10 Reinstatement all areas damaged or disturbed beyond the limit of Work.
- 11 Plant Material substitutions shall not be permitted without written approval from the Consultant.
- 12 Contractor shall advise Consultant a minimum of **48hrs.** prior to proceeding landscape work and any required Field Reviews.
- 13 **THIS PLAN HAS BEEN PREPARED FOR MUNICIPAL SITE PLAN APPROVAL ONLY AND MAY NOT BE USED FOR ANY OTHER PURPOSE.**

PLANT MATERIAL SCHEDULE

(Private Ownership)

CODE	BOTANICAL NAME	COMMON NAME	QTY.	SIZE	REMARKS / (N) NATIVE
DECIDUOUS TREES					
AFJ	ACER x FREEMANII JEFFERSRED	AUTUMN BLAZE MAPLE	4	50mm cal	B&B, single-stem / N
GT	GLEDITSIA TRIACANTHOS SKYLINE	SKYLINE HONEYLOCUST	2	50mm cal	B&B, single-stem
SHRUBS					
JSW	JUNIPERUS SCOPULORUM 'WICHITA BLUE'	WICHITA BLUE JUNIPER	14	100cm ht	potted, 100cm o/c
ST	SPIRAEA TOMENTOSA	STEEPLEBUSH	33	50cm ht	potted, 100cm o/c / N
PERENNIALS					
Ast	ASTER novae-angliae	NEW ENGLAND ASTER	20	1 gal. pot	plant 60cm o/c / N
Ech	ECHINACEA angustifolia	NARROW-LEAF CONEFLOWER	27	1 gal. pot	plant 60cm o/c / N
Li	LIATRIS spicata	DENSE BLAZING STAR	22	1 gal. pot	plant 60cm o/c / N
Rud	RUDBECKIA fulgida 'Goldsturm'	BLACK-EYED SUSAN	57	1 gal. pot	plant 60cm o/c / N
Sal	SALVIA variegata	RUSSIAN SAGE	41	1 gal. pot	plant 60cm o/c
ORNAMENTAL GRASSES					
Cal	CALAMAGROSTIS x acutiflora 'Karl Foerster'	KARL FOERSTER REED GRASS	48	1 gal. pot	plant 75cm o/c
Spo	SPOROBOLUS heterolepis	PRAIRE DROPSEED	33	1 gal. pot	plant 75cm o/c / N

TREE CANOPY COVER DATA
(ASSUMED AT 40 YR. MATURITY)

LARGE DECIDUOUS TREES: 10m Dia. Spread
78m² per x 6 = 468m²

TOTAL TREE CANOPY COVER: 468m²
APPROX. TOTAL APPLICATION SITE AREA minus BLDG. FOOTPRINT: 4780m²

% TREE CANOPY COVER: 9.8



OWNER:
NORTH AMERICAN DEVELOPMENT GROUP
2851 John St., Suite 1, Markham, ON L3R 5R7

ARCHITECT:
SCOLER LEE BORENSTEIN + ASSOCIATES
900-60 St. Clair Ave., E., Toronto, ON M4T 1N5

ONTARIO LAND SURVEYOR:
FAIRHALL, MOFFATT, WOODLAND LTD.
100-600 Terry Fox Dr., Kanata, ON K2L 4B6

CIVIL ENGINEER:
ARCADIS
500-333 Preston St., Ottawa ON K1S 5N4

LEGAL DESCRIPTION:
Part of Lot 15, Concession 3 (Rideau Front),
Geographic Township of Nepean,
City of Ottawa.

FOR APPROVAL ONLY

no.	date	revision
3.	JUNE 01/26	PER CLIENT REQUEST CHANGES
2.	MAY 12/26	PER SITE CHANGES / CITY COMMENTS
1.	NOV. 21/25	ISSUE FOR SITE PLAN APPROVAL

North Arrow

Stamp: ASSOCIATION OF LANDSCAPE ARCHITECTS OF ONTARIO

Contractor shall check and verify all dimensions on site and report all errors and/or omissions to the Consultant.

Work to be done in accordance with all applicable codes and by-laws.

Do not scale Drawing.

This Drawing shall not be used for construction until signed by the Consultant.

Copyright reserved. This Drawing is the exclusive property of Levstek Consultants Inc. and shall not be used without consent.

Consultant
LEVSTEK CONSULTANTS
LANDSCAPE ARCHITECTS
5871 Hugh Crescent - Ottawa - Ontario - K0A 2W6

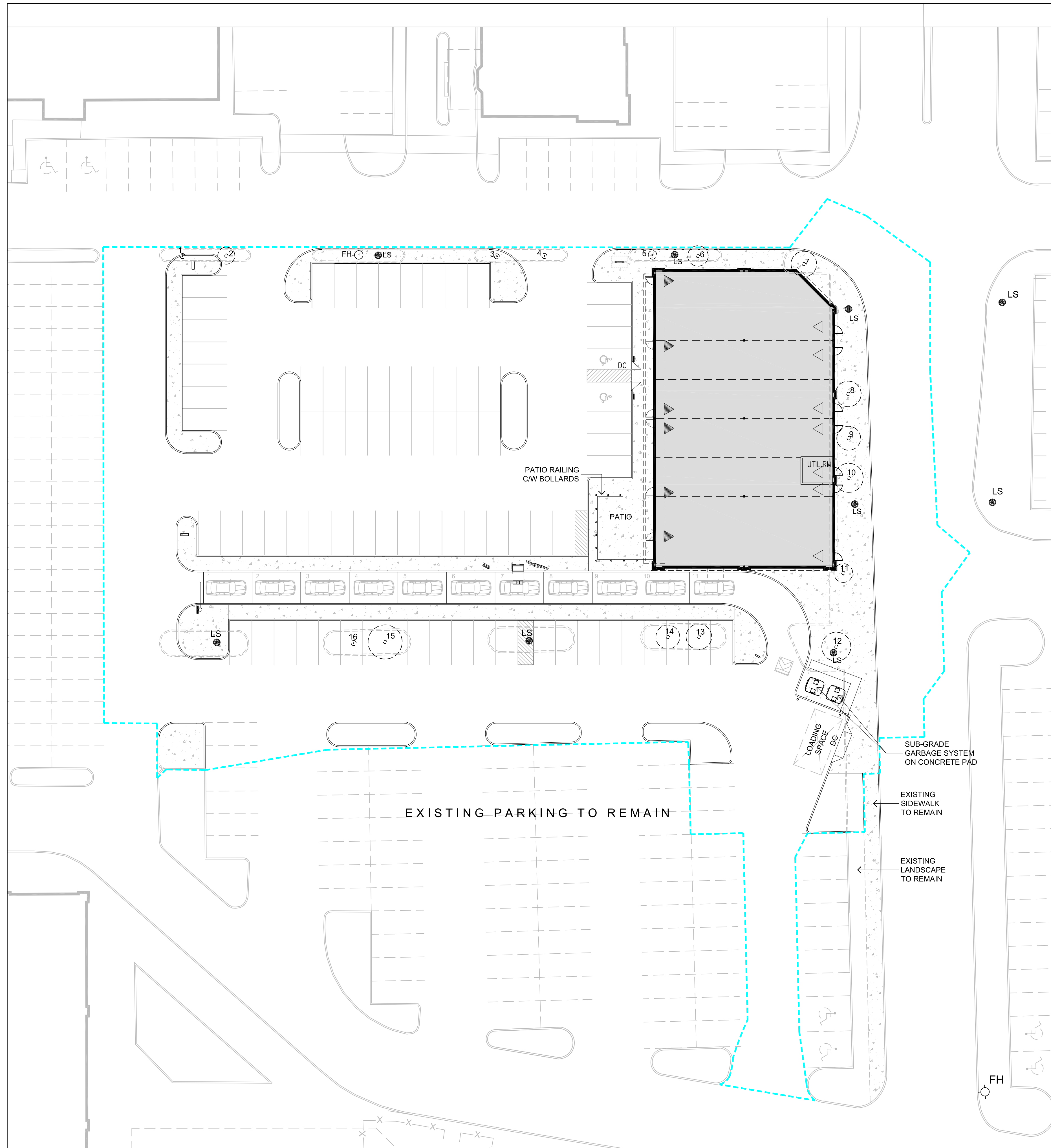
Project
BARRHERD TOWN CENTRE
3777 STRANDHERD DRIVE
NEPEAN, ONTARIO

Drawing Title
LANDSCAPE PLAN
SOIL VOLUME DATA LAYER

Drawn: MGB Date: OCT. 2025 Drawing No.:
Scale: 1:250 Project No.: 1254

THIS DRAWING IS COLOUR DEPENDENT.
NON-COLOUR COPIES MAY ALTER
INTERPRETATION.

File No. D07-12-25-0157 / Plan No. 19416



TREE CONSERVATION PLAN / REPORT
FOR PROPOSED 3777 STRANDHERD ROAD (BARRHAVEN TOWN CENTRE) DEVELOPMENT

INTRODUCTION
 In support of Site Plan Approval, and in accordance with the City of Ottawa's Tree Protection By-Law (No.2020-340), this Tree Conservation Report (TCR) identifies trees to be retained and protected under future development scenarios and, where feasible, recognizes opportunities to offset the loss of trees that cannot be retained or contribute to the City's forest cover targets.

EXISTING TREE INVENTORY
 An inventory of existing trees, whose caliper, as measured 1.4m from existing grade, subject to this application, was conducted on Oct. 14, 2025. The schedule identifies existing trees evaluated on the subject property (application) at date of inventory:

TREE SPECIES AT RISK
 No Tree Species at Risk, as identified under the Province of Ontario Endangered Species Act (ESA) were observed on subject property or within 25m of adjacent lands.

MITIGATION MEASURES
 No action required since all existing trees are privately owned and are **non-retainable**.

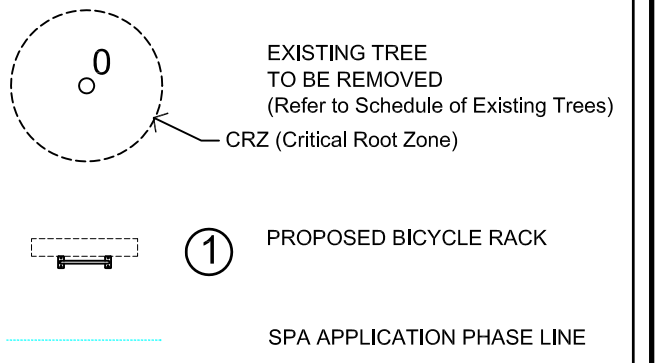
WILDLIFE PROTOCOL
 No tree removal shall occur between April 15 and August 15, unless a qualified wildlife biologist has determined that no bird nesting is occurring within 5 days prior to removal.

SCHEDULE OF EXISTING TREES
(Inventory conducted Oct.14/25)

CODE	SPECIES	CONDITION	DBH (cm)	OWNERSHIP	ACTION NOTES
1	Honeylocust (<i>Gleditsia</i>)	Good:	3	Private	Development conflict; NON-RETAINABLE
2	Maple (<i>Acer</i>)	Good:	10	Private	Development conflict; NON-RETAINABLE
3	Honeylocust (<i>Gleditsia</i>)	Good:	3	Private	Development conflict; NON-RETAINABLE
4	Honeylocust (<i>Gleditsia</i>)	Good:	3	Private	Development conflict; NON-RETAINABLE
5	Maple (<i>Acer</i>)	Good:	5	Private	Development conflict; NON-RETAINABLE
6	Maple (<i>Acer</i>)	Good:	12	Private	Development conflict; NON-RETAINABLE
7	Maple (<i>Acer</i>)	Fair:	15	Private	Development conflict; NON-RETAINABLE
8	Oak (<i>Quercus</i>)	Good:	15	Private	Development conflict; NON-RETAINABLE
9	Oak (<i>Quercus</i>)	Good:	14	Private	Development conflict; NON-RETAINABLE
10	Crabapple (<i>Malus</i>)	Fair:	17	Private	Development conflict; NON-RETAINABLE
11	Hackberry (<i>Celtis occidentalis</i>)	Good:	11	Private	Development conflict; NON-RETAINABLE
12	Crabapple (<i>Malus</i>)	Fair:	17	Private	Development conflict; NON-RETAINABLE
13	Maple (<i>Acer</i>)	Good:	15	Private	Development conflict; NON-RETAINABLE
14	Maple (<i>Acer</i>)	Good:	14	Private	Development conflict; NON-RETAINABLE
15	Maple (<i>Acer</i>)	Good:	20	Private	Development conflict; NON-RETAINABLE
16	Honeylocust (<i>Gleditsia</i>)	Good:	3	Private	Development conflict; NON-RETAINABLE

DBH Diameter at breast height, or 1.4m from grade (unless otherwise noted).

LEGEND / SYMBOL



OWNER:
 NORTH AMERICAN DEVELOPMENT GROUP
 2851 John St, Suite 1, Markham, ON L3R 5R7

ARCHITECT:
 SCOLER LEE BORENSTEIN + ASSOCIATES
 900-60 St. Clair Ave., E, Toronto, ON M4T 1N5

ONTARIO LAND SURVEYOR:
 FAIRHALL, MOFFATT, WOODLAND LTD.
 100-600 Terry Fox Dr., Kanata, ON K2L 4B6

CIVIL ENGINEER:
 ARCADIS
 500-333 Preston St., Ottawa ON K1S 5N4

LEGAL DESCRIPTION:
 Part of Lot 15, Concession 3 (Rideau Front),
 Geographic Township of Nepean,
 City of Ottawa.

FOR APPROVAL ONLY

3.	JUNE 01/26	PER CLIENT REQUEST CHANGES
2.	MAY 12/26	PER SITE CHANGES / CITY COMMENTS
1.	NOV. 21/25	ISSUE FOR SITE PLAN APPROVAL
no.	date	revision

North Arrow Stamp

Contractor shall check and verify all dimensions on site and report all errors and/or omissions to the Consultant.
 Work to be done in accordance with all applicable codes and by-laws.
 Do not scale Drawing.
 This Drawing shall not be used for construction until signed by the Consultant.
 Copyright reserved. This Drawing is the exclusive property of Levstek Consultants Inc. and shall not be used without consent.

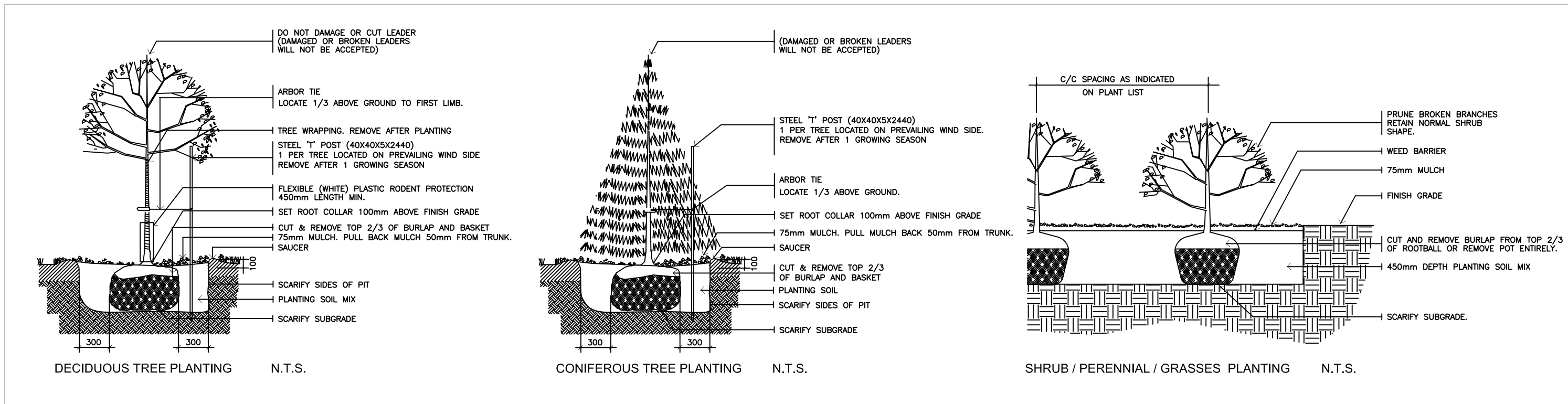
Consultant
LEVSTEK CONSULTANTS
 LANDSCAPE ARCHITECTS
 8871 Hugh Crescent - Ottawa - Ontario - K0A 2W0

Project:
 BARRHAVEN TOWN CENTRE
 3777 STRANDHERD DRIVE
 NEPEAN, ONTARIO

Drawing Title:
 TREE CONSERVATION PLAN / REPORT
 Drawn: MGB Date: OCT. 2025 Drawing No.: L1.02
 Scale: 1:250 Project No.: 1254

THIS DRAWING IS COLOUR DEPENDENT.
 NON-COLOUR COPIES MAY ALTER INTERPRETATION.

File No. D07-12-25-0157 / Plan No. 19416



1
L2.01 PLANTING DETAILS NTS

500 SERIES

MBR-0500-00003
Legacy #MBR500-S

MATERIALS: All parts of the bike rack are made from H.S. steel tube.

FINISH: All steel components are protected with E-Coat rust proofing. The Maglin Powdercoat System provides a durable finish on all metal surfaces.

INSTALLATION: The bike rack is delivered pre-assembled. It is available with either a surface mount or direct burial installation option.

TO SPECIFY: Select MBR-0500-00003
Choose:
- Powdercoat Color

HEIGHT: 35" (88.9cm) LENGTH: 19.25" (48.9cm) WEIGHT: 13.27 lbs (6.0kg)

MAGLIN
Site Furniture

T 800 776 1006
F 877 205 1938
www.maglin.com
info@maglin.com

All drawings, specifications, design and details on this page remain the property of Maglin Site Furniture Inc. and may not be used without Maglin's authorization. Details and specifications may vary due to continuing improvements of our products.

INSTALLATION: SURFACE MOUNT
FINISH: TITANIUM (GLOSS) POWDERCOAT

2
L2.01 BICYCLE RACK NTS



OWNER:
NORTH AMERICAN DEVELOPMENT GROUP
2851 John St., Suite 1, Markham, ON L3R 5R7

ARCHITECT:
SCOLER LEE BORENSTEIN + ASSOCIATES
900-60 St. Clair Ave., E, Toronto, ON M4T 1N5

ONTARIO LAND SURVEYOR:
FAIRHALL, MOFFATT, WOODLAND LTD.
100-600 Terry Fox Dr., Kanata, ON K2L 4B6

CIVIL ENGINEER:
ARCADIS
500-333 Preston St., Ottawa ON K1S 5N4

LEGAL DESCRIPTION:
Part of Lot 15, Concession 3 (Rideau Front),
Geographic Township of Nepean,
City of Ottawa.

FOR APPROVAL ONLY

3.	JUNE 01/26	PER CLIENT REQUEST CHANGES
2.	MAY 12/26	PER SITE CHANGES / CITY COMMENTS
1.	NOV. 21/25	ISSUE FOR SITE PLAN APPROVAL

no.	date	revision
-----	------	----------

North Arrow

Stamp

Contractor shall check and verify all dimensions on site and report all errors and/or omissions to the Consultant.

Work to be done in accordance with all applicable codes and by-laws.

Do not scale Drawing.

This Drawing shall not be used for construction until signed by the Consultant.

Copyright reserved. This Drawing is the exclusive property of Levstek Consultants Inc. and shall not be used without consent.

Consultant

LEVSTEK CONSULTANTS
LANDSCAPE ARCHITECTS

5871 Hugh Crescent - Ottawa - Ontario - K0A 2W9

Project:
BARRHAVEN TOWN CENTRE
3777 STRANDHERD DRIVE
NEPEAN, ONTARIO

Drawing Title
LANDSCAPE DETAILS

Drawn	MGB	Date	OCT. 2025	Drawing No.	
Scale	AS NOTED	Project No.	1254		L2.01

File No. D07-12-25-0157 / Plan No. 19416