

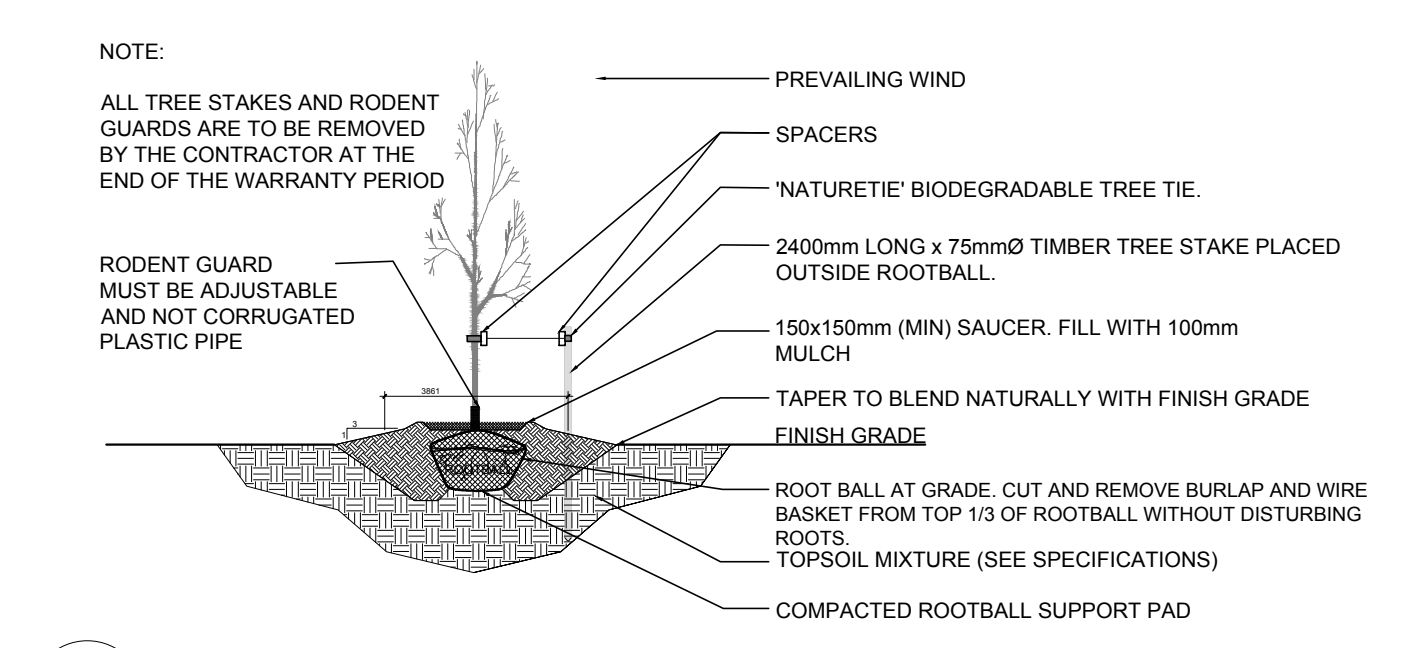
- GENERAL NOTES:**
- IT IS THE RESPONSIBILITY OF THE APPROPRIATE CONTRACTOR OR OFFICIAL TO REPORT ANY ERRORS, OMISSIONS OR DISCREPANCIES ON THIS PLAN WITH ACTUAL SITE CONDITIONS TO THE LANDSCAPE ARCHITECT BEFORE PROCEEDING WITH CONSTRUCTION.
  - THE CONTRACTOR IS TO NOTIFY ALL UTILITY COMPANIES AND AUTHORITIES PRIOR TO ANY EXCAVATION AND ASCERTAIN LOCATIONS OF UNDERGROUND SERVICES.
  - THE CONTRACTOR IS TO RESTATE ALL AREAS AND ITEMS DAMAGED AS A RESULT OF CONSTRUCTION ACTIVITY.
  - THE CONTRACTOR IS TO COMPLY WITH ALL PERTINENT CODES AND BY-LAWS.
  - THE CONTRACTOR IS TO MAINTAIN A POSITIVE SURFACE RUN-OFF THROUGHOUT THE ENTIRE CONSTRUCTION PERIOD.
  - THE LANDSCAPE ARCHITECT IS NOT RESPONSIBLE FOR SUBSURFACE CONDITIONS.
  - THE CONTRACTOR IS TO IDENTIFY ALL EXISTING TREES TO REMAIN ON SITE WITH THE LANDSCAPE ARCHITECT PRIOR TO CONSTRUCTION.
  - THE CONTRACTOR IS TO STAKE THE PROPOSED LOCATION OF ALL PLANT MATERIAL IN CONJUNCTION WITH THE LANDSCAPE ARCHITECT PRIOR TO EXCAVATION.
  - MINIMUM DISTANCES FOR SELECTED DECIDUOUS TREES ARE AS FOLLOWS:
    - BUILDING FOUNDATIONS - 7.5M
    - SIDEWALKS - 1.5M
    - PUBLIC STREETS - 2.5M
    - UNDERGROUND INFRASTRUCTURE - 2.0M
  - ALL TREES WITHIN 1M OF UNDERGROUND UTILITY TRENCHES ARE TO BE EXCAVATED BY HAND.
  - REMOVE ALL PROTECTIVE WRAPPING FROM TREE TRUNKS AFTER INSTALLATION.
  - STAKING OF TREES SHALL ONLY BE PERFORMED IF NECESSARY.
  - ENSURE THAT MULCH IS PULLED BACK A MINIMUM DISTANCE OF 75MM FROM BASE OF TREE TRUNK.

**1 TREE CONSERVATION REPORT & LANDSCAPE PLAN**  
L.1 SCALE 1:300

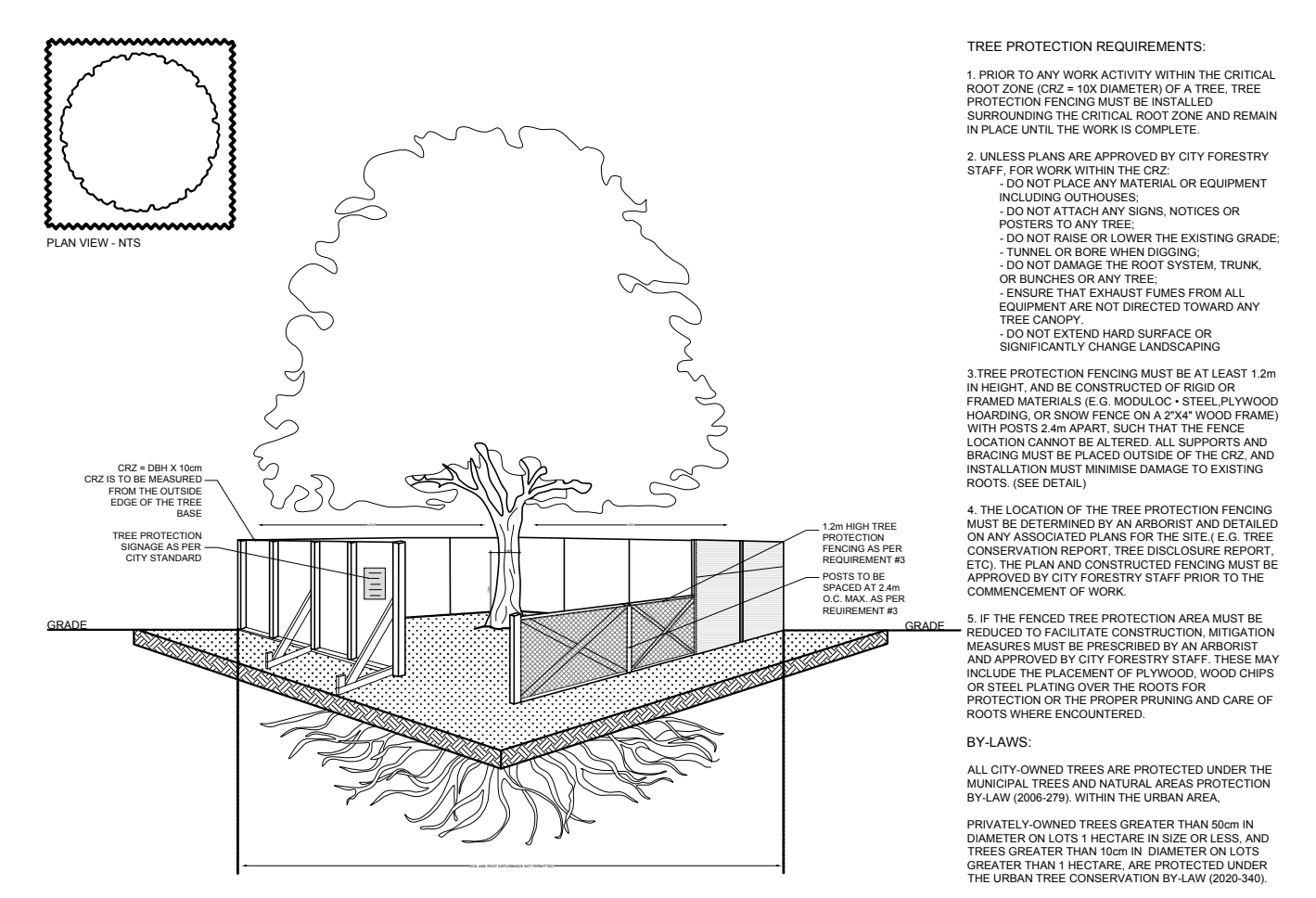
KEY	QTY.	BOTANICAL NAME	COMMON NAME	SIZE	CONDITION	REMARKS	OWNERSHIP	COMMENTS
1	1	<i>Gleditsia triacanthos</i>	Honey Locust	220mm DBH	GOOD	To remain	1925 Merivale Rd.	Tree is in good condition
2	1	<i>Gleditsia triacanthos</i>	Honey Locust	140mm DBH	GOOD	To remain	1925 Merivale Rd.	Conflicting with new curb
3	1	<i>Gleditsia triacanthos</i>	Honey Locust	440mm DBH	GOOD	To remain	1925 Merivale Rd.	Tree is in good condition
4	1	<i>Gleditsia triacanthos</i>	Honey Locust	180mm DBH	GOOD	To remain	1925 Merivale Rd.	Tree is in good condition
5	1	<i>Tilia cordata</i>	Littleleaf Linden	310, 330, 360mm DBH	POOR	To be removed	1925 Merivale Rd.	Conflicting with new drive aisle, 40% can.
6	1	<i>Tilia cordata</i>	Littleleaf Linden	260, 310mm DBH	POOR	To remain	1925 Merivale Rd.	Tree in in poor condition, 50% canopy
7	1	<i>Ulmus americana</i>	American Elm	390, 620mm DBH	POOR	To be removed	1925 Merivale Rd.	Poor condition. Split leader, 80% can.
8	1	<i>Tilia cordata</i>	Littleleaf Linden	480mm DBH	GOOD	To remain	1925 Merivale Rd.	Tree is in good condition
9	1	<i>Tilia cordata</i>	Littleleaf Linden	270, 410mm DBH	GOOD	To remain	1925 Merivale Rd.	Tree is in good condition
10	1	<i>Tilia cordata</i>	Littleleaf Linden	580mm DBH	GOOD	To remain	1925 Merivale Rd.	Tree is in good condition
11	1	<i>Acer saccharum</i>	Sugar Maple	420mm DBH	FAIR	To remain	1925 Merivale Rd.	Tree is in fair condition, 80% can.
12	1	<i>Pinus nigra</i>	Austrian Pine	310mm DBH	GOOD	To be removed	1925 Merivale Rd.	Conflicting with new parking lot
13	1	<i>Pinus nigra</i>	Austrian Pine	360mm DBH	GOOD	To be removed	1925 Merivale Rd.	Conflicting with new parking lot

KEY	QTY.	BOTANICAL NAME	COMMON NAME	SIZE	CONDITION	REMARKS
<b>TREES</b>						
*FM	4	<i>Acer x freemanii</i>	Freeman's Maple	50mm ø	B&B	Male tree
GB	3	<i>Ginkgo biloba</i>	Maidenhair Tree	50mm ø	B&B	
*HB	4	<i>Celtis occidentalis</i>	Hackberry	50mm ø	B&B	
*HL	2	<i>Gleditsia triacanthos</i> 'Draves'	Street Keeper Honey Locust	50mm ø	B&B	
JL	3	<i>Syringa reticulata</i>	Japanese Tree Lilac	50mm ø	B&B	
<b>SHRUBS</b>						
HY	9	<i>Taxus x media</i> 'Hicksii'	Hick's Yew	1500mm ht.	Potted	Space 600mm O.C.
<b>ORNAMENTAL GRASSES</b>						
BL	44	<i>Leymus arenarius</i> 'Blue Dune'	Blue Lyme Grass	250mm pot	Potted	Space 800mm O.C.
KF	56	<i>Calamagrostis</i> 'Karl Foerster'	Feather Reed Grass	250mm pot	Potted	Space 800mm O.C.
OD	22	<i>Calamagrostis</i> 'Overdam'	Overdam Grass	250mm pot	Potted	Space 800mm O.C.

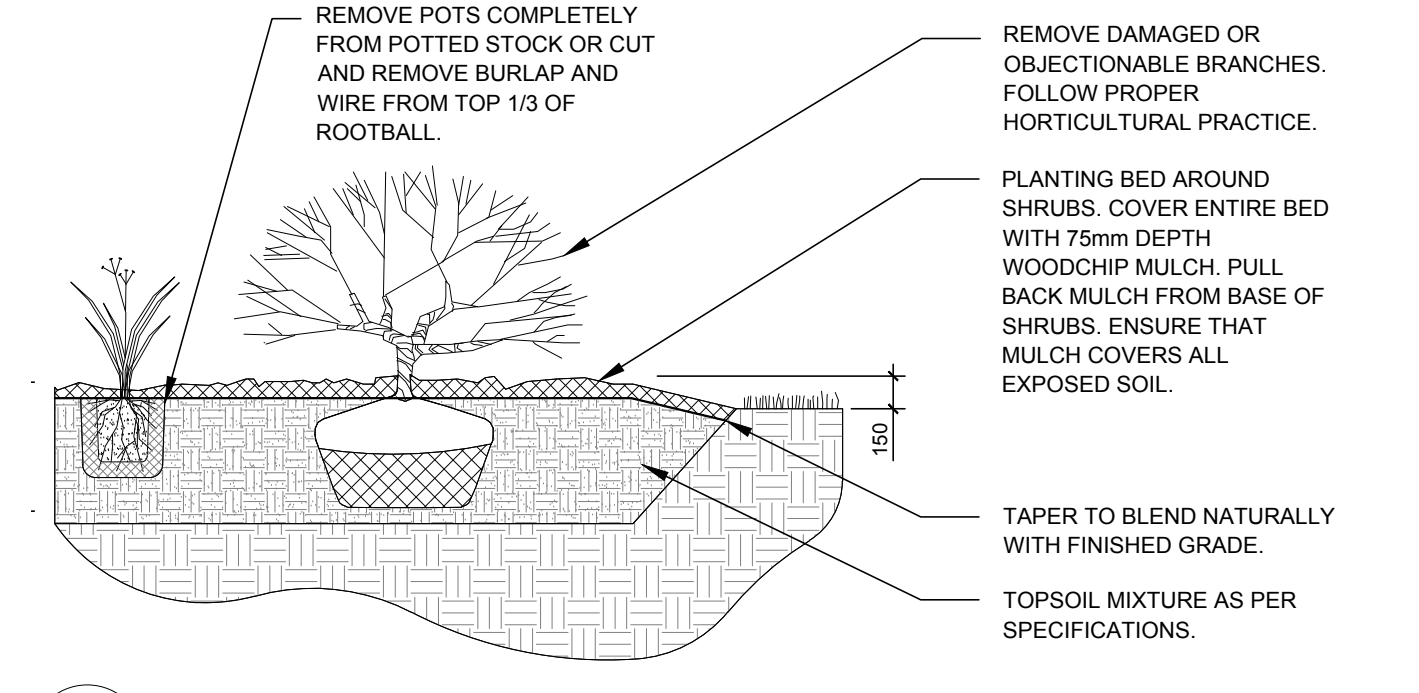
\*Indicates that species is native to Ontario. All vegetation is proposed on private property.



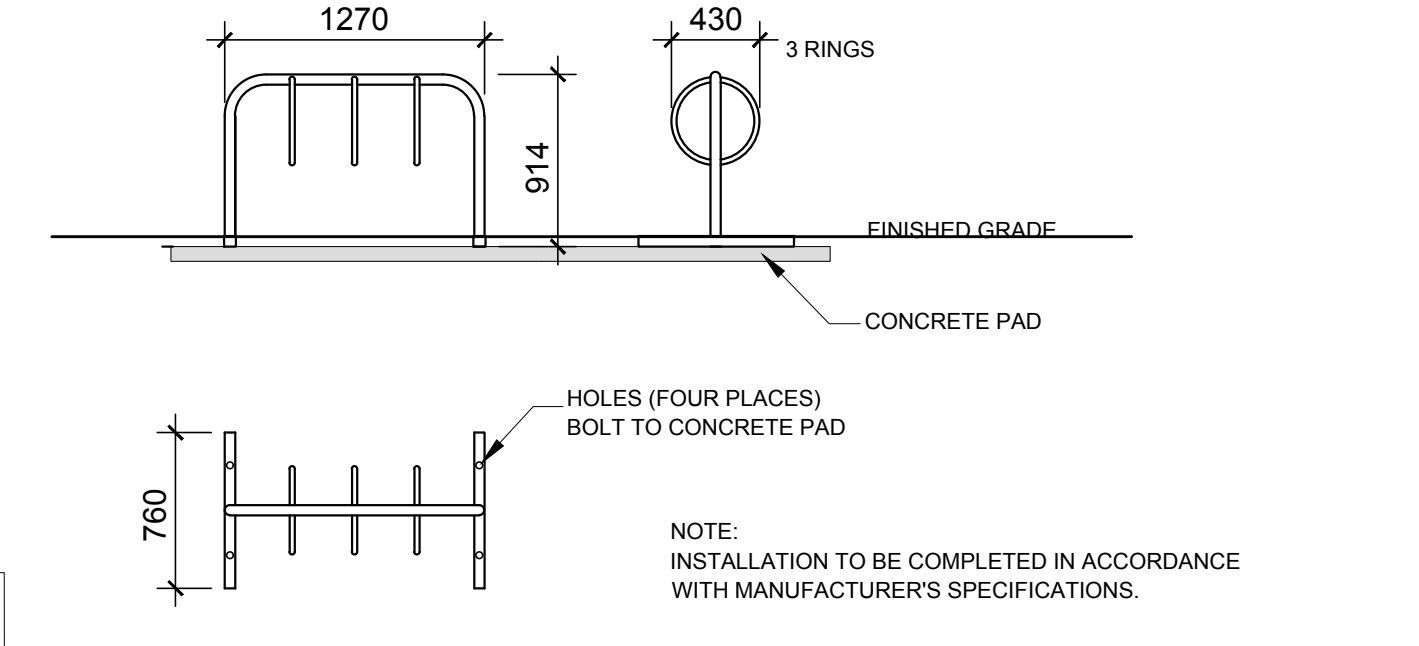
**2 DECIDUOUS TREE PLANTING**  
L.1 SCALE: NTS



**3 TREE PROTECTION FENCE**  
L.1 SCALE: NTS



**4 SHRUB / ORNAMENTAL GRASS PLANTING**  
L.1 SCALE: NTS



**5 THREE RING BIKE RACK**  
L.1 SCALE: NTS

**40 YEAR CANOPY CALCULATION:**

6,717 m<sup>2</sup> limit of work

(11) Large Deciduous Trees Proposed (154m<sup>2</sup>ea)  
 (5) Medium Deciduous Trees Proposed (79m<sup>2</sup> ea)  
 (6) Small deciduous trees proposed (7m<sup>2</sup> ea)  
 (1) Large existing tree to remain (154m<sup>2</sup>)  
 (3) Medium existing trees to remain (79m<sup>2</sup> ea)

= 2,522m<sup>2</sup> canopy cover = 37.5% canopy cover

\*Large deciduous tree calculated at 14m spread, and medium trees at 10m spread and small trees at 3m spread

**LEGAL DESCRIPTION**

LOTS 156, 157 & 158 AND PART OF LOTS 125, 126, 127, 128, 129, 130, 131, 132, 133 & 155 AND PART OF CLARKE ROAD (AS CLOSED BY BY-LAW NP51189) REGISTERED PLAN 382 AND PART OF LOT 27, CONCESSION A (RIDEAU FRONT) CITY OF OTTAWA

**PETER DRUMMOND & SON LTD.**

CIVIL ENGINEERS

1430 Carleton Place, Ottawa, ON, K1J 1J2  
 www.lrrj.ca | (613) 842-3434

SURVEYORS

**Fairhall Moffatt & Woodland**

L.1, L.2, L.3, L.4, L.5, L.6, L.7, L.8, L.9, L.10, L.11, L.12, L.13, L.14, L.15, L.16, L.17, L.18, L.19, L.20, L.21, L.22, L.23, L.24, L.25, L.26, L.27, L.28, L.29, L.30, L.31, L.32, L.33, L.34, L.35, L.36, L.37, L.38, L.39, L.40, L.41, L.42, L.43, L.44, L.45, L.46, L.47, L.48, L.49, L.50, L.51, L.52, L.53, L.54, L.55, L.56, L.57, L.58, L.59, L.60, L.61, L.62, L.63, L.64, L.65, L.66, L.67, L.68, L.69, L.70, L.71, L.72, L.73, L.74, L.75, L.76, L.77, L.78, L.79, L.80, L.81, L.82, L.83, L.84, L.85, L.86, L.87, L.88, L.89, L.90, L.91, L.92, L.93, L.94, L.95, L.96, L.97, L.98, L.99, L.100, L.101, L.102, L.103, L.104, L.105, L.106, L.107, L.108, L.109, L.110, L.111, L.112, L.113, L.114, L.115, L.116, L.117, L.118, L.119, L.120, L.121, L.122, L.123, L.124, L.125, L.126, L.127, L.128, L.129, L.130, L.131, L.132, L.133, L.134, L.135, L.136, L.137, L.138, L.139, L.140, L.141, L.142, L.143, L.144, L.145, L.146, L.147, L.148, L.149, L.150, L.151, L.152, L.153, L.154, L.155, L.156, L.157, L.158, L.159, L.160, L.161, L.162, L.163, L.164, L.165, L.166, L.167, L.168, L.169, L.170, L.171, L.172, L.173, L.174, L.175, L.176, L.177, L.178, L.179, L.180, L.181, L.182, L.183, L.184, L.185, L.186, L.187, L.188, L.189, L.190, L.191, L.192, L.193, L.194, L.195, L.196, L.197, L.198, L.199, L.200, L.201, L.202, L.203, L.204, L.205, L.206, L.207, L.208, L.209, L.210, L.211, L.212, L.213, L.214, L.215, L.216, L.217, L.218, L.219, L.220, L.221, L.222, L.223, L.224, L.225, L.226, L.227, L.228, L.229, L.230, L.231, L.232, L.233, L.234, L.235, L.236, L.237, L.238, L.239, L.240, L.241, L.242, L.243, L.244, L.245, L.246, L.247, L.248, L.249, L.250, L.251, L.252, L.253, L.254, L.255, L.256, L.257, L.258, L.259, L.260, L.261, L.262, L.263, L.264, L.265, L.266, L.267, L.268, L.269, L.270, L.271, L.272, L.273, L.274, L.275, L.276, L.277, L.278, L.279, L.280, L.281, L.282, L.283, L.284, L.285, L.286, L.287, L.288, L.289, L.290, L.291, L.292, L.293, L.294, L.295, L.296, L.297, L.298, L.299, L.300, L.301, L.302, L.303, L.304, L.305, L.306, L.307, L.308, L.309, L.310, L.311, L.312, L.313, L.314, L.315, L.316, L.317, L.318, L.319, L.320, L.321, L.322, L.323, L.324, L.325, L.326, L.327, L.328, L.329, L.330, L.331, L.332, L.333, L.334, L.335, L.336, L.337, L.338, L.339, L.340, L.341, L.342, L.343, L.344, L.345, L.346, L.347, L.348, L.349, L.350, L.351, L.352, L.353, L.354, L.355, L.356, L.357, L.358, L.359, L.360, L.361, L.362, L.363, L.364, L.365, L.366, L.367, L.368, L.369, L.370, L.371, L.372, L.373, L.374, L.375, L.376, L.377, L.378, L.379, L.380, L.381, L.382, L.383, L.384, L.385, L.386, L.387, L.388, L.389, L.390, L.391, L.392, L.393, L.394, L.395, L.396, L.397, L.398, L.399, L.400, L.401, L.402, L.403, L.404, L.405, L.406, L.407, L.408, L.409, L.410, L.411, L.412, L.413, L.414, L.415, L.416, L.417, L.418, L.419, L.420, L.421, L.422, L.423, L.424, L.425, L.426, L.427, L.428, L.429, L.430, L.431, L.432, L.433, L.434, L.435, L.436, L.437, L.438, L.439, L.440, L.441, L.442, L.443, L.444, L.445, L.446, L.447, L.448, L.449, L.450, L.451, L.452, L.453, L.454, L.455, L.456, L.457, L.458, L.459, L.460, L.461, L.462, L.463, L.464, L.465, L.466, L.467, L.468, L.469, L.470, L.471, L.472, L.473, L.474, L.475, L.476, L.477, L.478, L.479, L.480, L.481, L.482, L.483, L.484, L.485, L.486, L.487, L.488, L.489, L.490, L.491, L.492, L.493, L.494, L.495, L.496, L.497, L.498, L.499, L.500, L.501, L.502, L.503, L.504, L.505, L.506, L.507, L.508, L.509, L.510, L.511, L.512, L.513, L.514, L.515, L.516, L.517, L.518, L.519, L.520, L.521, L.522, L.523, L.524, L.525, L.526, L.527, L.528, L.529, L.530, L.531, L.532, L.533, L.534, L.535, L.536, L.537, L.538, L.539, L.540, L.541, L.542, L.543, L.544, L.545, L.546, L.547, L.548, L.549, L.550, L.551, L.552, L.553, L.554, L.555, L.556, L.557, L.558, L.559, L.560, L.561, L.562, L.563, L.564, L.565, L.566, L.567, L.568, L.569, L.570, L.571, L.572, L.573, L.574, L.575, L.576, L.577, L.578, L.579, L.580, L.581, L.582, L.583, L.584, L.585, L.586, L.587, L.588, L.589, L.590, L.591, L.592, L.593, L.594, L.595, L.596, L.597, L.598, L.599, L.600, L.601, L.602, L.603, L.604, L.605, L.606, L.607, L.608, L.609, L.610, L.611, L.612, L.613, L.614, L.615, L.616, L.617, L.618, L.619, L.620, L.621, L.622, L.623, L.624, L.625, L.626, L.627, L.628, L.629, L.630, L.631, L.632, L.633, L.634, L.635, L.636, L.637, L.638, L.639, L.640, L.641, L.642, L.643, L.644, L.645, L.646, L.647, L.648, L.649, L.650, L.651, L.652, L.653, L.654, L.655, L.656, L.657, L.658, L.659, L.660, L.661, L.662, L.663, L.664, L.665, L.666, L.667, L.668, L.669, L.670, L.671, L.672, L.673, L.674, L.675, L.676, L.677, L.678, L.679, L.680, L.681, L.682, L.683, L.684, L.685, L.686, L.687, L.688, L.689, L.690, L.691, L.692, L.693, L.694, L.695, L.696, L.697, L.698, L.699, L.700, L.701, L.702, L.703, L.704, L.705, L.706, L.707, L.708, L.709, L.710, L.711, L.712, L.713, L.714, L.715, L.716, L.717, L.718, L.719, L.720, L.721, L.722, L.723, L.724, L.725, L.726, L.727, L.728, L.729, L.730, L.731, L.732, L.733, L.734, L.735, L.736, L.737, L.738, L.739, L.740, L.741, L.742, L.743, L.744, L.745, L.746, L.747, L.748, L.749, L.750, L.751, L.752, L.753, L.754, L.755, L.756, L.757, L.758, L.759, L.760, L.761, L.762, L.763, L.764, L.765, L.766, L.767, L.768, L.769, L.770, L.771, L.772, L.773, L.774, L.775, L.776, L.777, L.778, L.779, L.780, L.781, L.782, L.783, L.784, L.785, L.786, L.787, L.788, L.789, L.790, L.791, L.792, L.793, L.794, L.795, L.796, L.797, L.798, L.799, L.800, L.801, L.802, L.803, L.804, L.805, L.806, L.807, L.808, L.809, L.810, L.811, L.812, L.813, L.814, L.815, L.816, L.817, L.818, L.819, L.820, L.821, L.822, L.823, L.824, L.825, L.826, L.827, L.828, L.829, L.830, L.831, L.832, L.833, L.834, L.835, L.836, L.837, L.838, L.839, L.840, L.841, L.842, L.843, L.844, L.845, L.846, L.847, L.848, L.849, L.850, L.851, L.852, L.853, L.854, L.855, L.856, L.857, L.858, L.859, L.860, L.861, L.862, L.863, L.864, L.865, L.866, L.867, L.868, L.869, L.870, L.871, L.872, L.873, L.874, L.875, L.876, L.877, L.878, L.879, L.880, L.881, L.882, L.883, L.884, L.885, L.886, L.887, L.888, L.889, L.890, L.891, L.892, L.893, L.894, L.895, L.896, L.897, L.898, L.899, L.900, L.901, L.902, L.903, L.904, L.905, L.906, L.907, L.908, L.909, L.910, L.911, L.912, L.913, L.914, L.915, L.916, L.917, L.918, L.919, L.920, L.921, L.922, L.923, L.924, L.925, L.926, L.927, L.928, L.929, L.930, L.931, L.932, L.933, L.934, L.935, L.936, L.937, L.938, L.939, L.940, L.941, L.942, L.943, L.944, L.945, L.946, L.947, L.948, L.949, L.950, L.951, L.952, L.953, L.954, L.955, L.956, L.957, L.958, L.959, L.960, L.961, L.962, L.963, L.964, L.965, L.966, L.967, L.968, L.969, L.970, L.971, L.972, L.973, L.974, L.975, L.976, L.977, L.978, L.979, L.980, L.981, L.982, L.983, L.984, L.985, L.986, L.987, L.988, L.989, L.990, L.991, L.992, L.993, L.994, L.995, L.996, L.997, L.998, L.999, L.1000, L.1001, L.1002, L.1003, L.1004, L.1005, L.1006, L.1007, L.1008, L.1009, L.1010, L.1011, L.1012, L.1013, L.1014, L.1015, L.1016, L.1017, L.1018, L.1019, L.1020, L.1021, L.1022, L.1023, L.1024, L.1025, L.1026, L.1027, L.1028, L.1029, L.1030, L.1031, L.1032, L.1033, L.1034, L.1035, L.1036, L.1037, L.1038, L.1039, L.1040, L.1041, L.1042, L.1043, L.1044, L.1045, L.1046, L.1047, L.1048, L.1049, L.1050, L.1051, L.1052, L.1053, L.1054, L.1055, L.1056, L.1057, L.1058, L.1059, L.1060, L.1061, L.1062, L.1063, L.1064, L.1065, L.1066, L.1067, L.1068, L.1069, L.1070, L.1071, L.1072, L.1073, L.1074, L.1075, L.1076, L.1077, L.1078, L.1079, L.1080, L.1081, L.1082, L.1083, L.1084, L.1085, L.1086, L.1087, L.1088, L.1089, L.1090, L.1091, L.1092, L.1093, L.1094, L.1095, L.1096, L.1097, L.1098, L.1099, L.1100, L.1101, L.1102, L.1103, L.1104, L.1105, L.1106, L.1107, L.1108, L.1109, L.1110, L.1111, L.1112, L.1113, L.1114, L.1115, L.1116, L.1117, L.1118, L.1119, L.1120, L.1121, L.1122, L.1123, L.1124, L.1125, L.1126, L.1127, L.1128, L.1129, L.1130, L.1131, L.1132, L.1133, L.1134, L.1135, L.1136, L.1137, L.1138, L.1139, L.1140, L.1141, L.1142, L.1143, L.1144, L.1145, L.1146, L.1147, L.1148, L.1149, L.1150, L.1151, L.1152, L.1153, L.1154, L.1155, L.1156, L.1157, L.1158, L.1159, L.1160, L.1161, L.1162, L.1163, L.1164, L.1165, L.1166, L.1167, L.1168, L.1169, L.1170, L.1171, L.1172, L.1173, L.1174, L.1175, L.1176, L.1177, L.1178, L.1179, L.1180, L.1181, L.1182, L.1183, L.1184, L.1185, L.1186, L.1187, L.1188, L.1189, L.1190, L.1191, L.1192, L.1193, L.1194, L.1195, L.1196, L.1197, L.1198, L.1199, L.1200, L.1201, L.1202, L.1203, L.1204, L.1205, L.1206, L.1207, L.1208, L.1209, L.1210, L.1211, L.1212, L.1213, L.1214, L.1215, L.1216, L.1217, L.1218, L.1219, L.1220, L.1221, L.1222, L.1223, L.1224, L.1225, L.1226, L.1227, L.1228, L.1229, L.1230, L.1231, L.1232, L.1233, L.1234, L.1235, L.1236, L.1237, L.1238, L.1239, L.1240, L.1241, L.1242, L.1243, L.1244, L.1245, L.1246, L.1247, L.1248, L.1249, L.1250, L.1251, L.1252, L.1253, L.1254, L.1255, L.1256, L.1257, L.1258, L.1259, L.1260, L.1261, L.1262, L.1263, L.1264, L.1265, L.1266, L.1267, L.1268, L.1269, L.1270, L.1271, L.1272, L.1273, L.1274, L.1275, L.1276, L