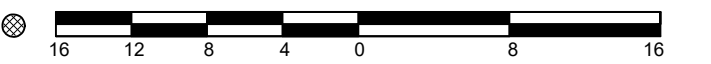


TOPOGRAPHIC PLAN OF SURVEY OF
PART OF LOT 3
CONCESSION 3 (RIDEAU FRONT)
 GEOGRAPHIC TOWNSHIP OF GLOUCESTER
 CITY OF OTTAWA
 MONUMENT-URSO SURVEYING LTD.

SCALE 1 : 400



METRIC
 DISTANCES SHOWN ON THIS PLAN ARE IN METRES AND CAN BE
 CONVERTED TO FEET BY DIVIDING BY 0.3048.

SURVEYOR'S CERTIFICATE

- I CERTIFY THAT:
- THIS SURVEY AND PLAN ARE CORRECT AND IN ACCORDANCE WITH THE SURVEY'S ACT, THE SURVEYORS ACT, AND THE REGULATIONS MADE UNDER THEM.
 - THE SURVEY WAS COMPLETED ON THE 6TH DAY OF MAY, 2025.

May 26th 2025
 DATE

[Signature]
 STEFAN BAZAR
 ONTARIO LAND SURVEYOR

LEGEND

DENOTES	
■	FOUND SURVEY MONUMENT
□	PLANTED SURVEY MONUMENT
IB	IRON BAR
SIB	STANDARD IRON BAR
SSIB	SHORT STANDARD IRON BAR
IB0	ROUND IRON BAR
CP	CONCRETE PIN
(WIT)	WITNESS
ACC.	ACCEPTED
MEAS.	MEASURED
(L176)	MONUMENT-URSO SURVEYING LTD.
(P1)	PLAN 4R-10668
(P2)	(857) PLAN DATED NOVEMBER 11, 2009
(P3)	PLAN 5R-11508
(P4)	(857) PLAN DATED OCTOBER 12, 1993
(P5)	PLAN 4R-12914
OH	OVERHEAD WIRES
G	UNDERGROUND GAS
MH	MAINTENANCE HOLE - UNIDENTIFIED
MH-H	MAINTENANCE HOLE - HYDRO
MH-S	MAINTENANCE HOLE - SANITARY
MH-ST	MAINTENANCE HOLE - STORMWATER
MH-B	MAINTENANCE HOLE - BELL
T-PED	TRAFFIC PEDESTAL
88.00	EXISTING ELEVATIONS
○	DECIDUOUS TREE
○	WATER VALVE
GM	GAS METER
AC	AIR CONDITIONER
○	DIAMETER
VC	VALVE CHAMBER
CB	CATCH BASIN
SP	STAND PIPE
OUP	UTILITY POLE
AN	ANCHOR
C/L	CENTRELINE
BF	BOARD FENCE
CLF	CHAIN-LINK FENCE
T/G	TOP OF GRATE
WW	WINDOW WELL
CLR	CENTRELINE OF ROAD
EOA	EDGE OF ASPHALT
N/S	NORTH/SOUTH

ASSOCIATION OF ONTARIO
 LAND SURVEYORS
 PLAN SUBMISSION FORM
 V-93235

THIS PLAN IS NOT VALID
 UNLESS IT IS AN EMBOSSED
 ORIGINAL COPY
 ISSUED BY THE SURVEYOR
 IN ACCORDANCE WITH
 REGULATION 1026, SECTION 29(3).

BEARING NOTE

BEARINGS ARE MTM GRID, DERIVED FROM SMART-NET REAL-TIME NETWORK OBSERVATIONS AND ARE REFERRED TO THE CENTRAL MERIDIAN 76°30' WEST LONGITUDE OF MTM ZONE 9 NAD83 (CSRS)(2010.0).

FOR BEARING COMPARISONS A ROTATION OF 00°16'00" COUNTER-CLOCKWISE WAS APPLIED TO PLANS (P1) TO (P5) TO CONVERT TO GRID BEARINGS.

UTILITY NOTE

THIS DRAWING DOES NOT SERVE AS A COMPREHENSIVE CONFIRMATION OF ALL UTILITIES PRESENT. IT IS THE USER'S RESPONSIBILITY TO CONTACT THE RELEVANT UTILITY AUTHORITIES FOR VERIFICATION.

ONLY UTILITIES VISIBLE ON THE SURFACE HAVE BEEN IDENTIFIED PRIOR TO ANY ACTIVITIES SUCH AS DIGGING. IT IS MANDATORY TO OBTAIN A FIELD LOCATION OF UNDERGROUND UTILITIES FROM THE APPROPRIATE AUTHORITY.

ELEVATION NOTE

ELEVATIONS ARE GEODETIC AND REFERRED TO THE CANADIAN GEODETIC VERTICAL DATUM (CGVD28:78) BY DIRECT MEASUREMENT TO A REAL TIME NETWORK.

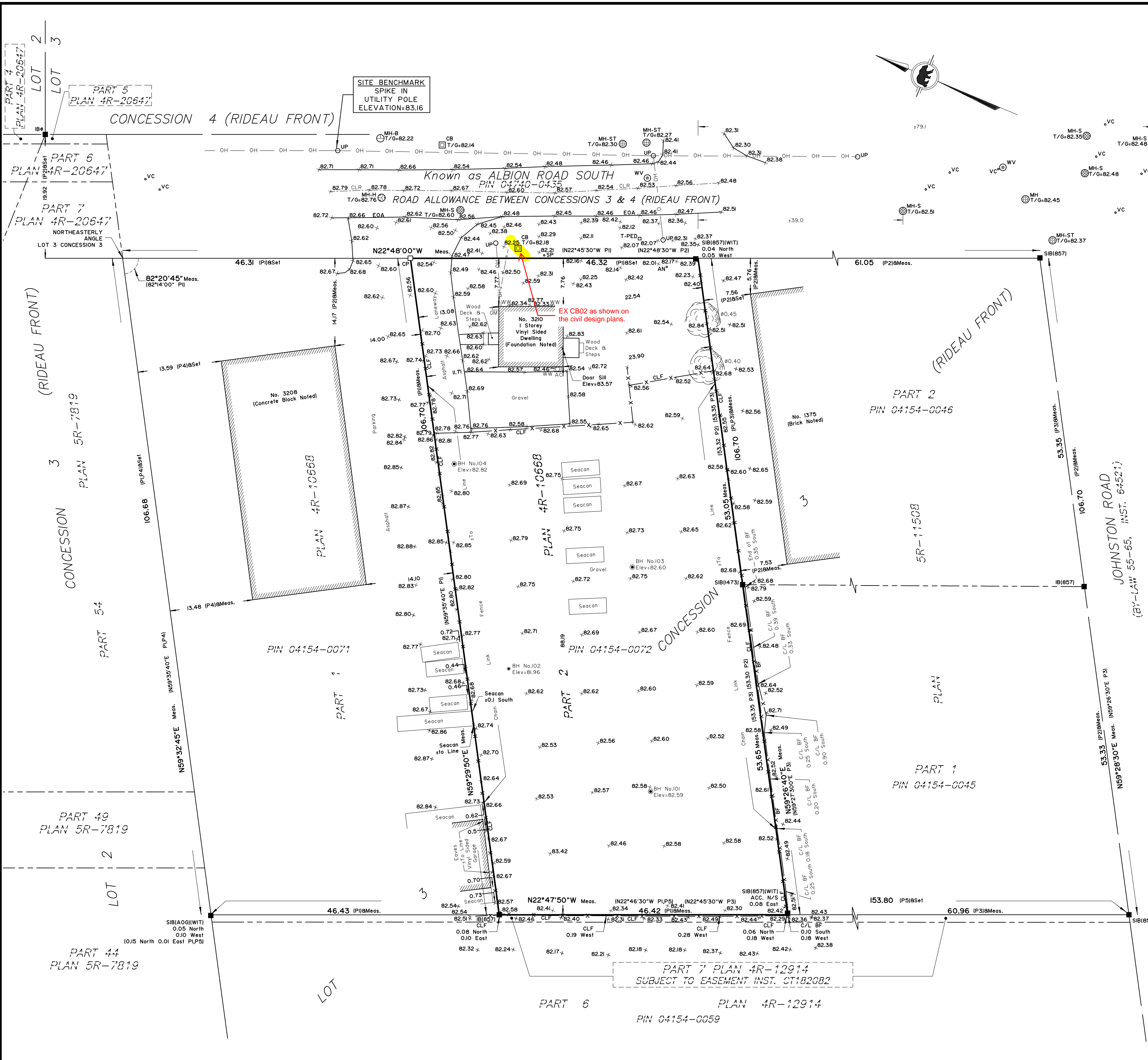
THE USER OF THIS INFORMATION BEARS THE RESPONSIBILITY TO CONFIRM THAT THE JOB BENCHMARK REMAINS UNALTERED AND UNDISTURBED, AND THAT ITS RELATIVE HEIGHT AND DESCRIPTION ALIGN WITH THE DETAILS PRESENTED IN THIS PLAN.

© MONUMENT-URSO SURVEYING LTD., 2025. THIS PLAN IS PROTECTED BY COPYRIGHT

Monument-Urso Surveying Ltd.
 Ontario Land Surveyors | Canada Land Surveyors
 1755 WOODWARD DRIVE, SUITE 200
 OTTAWA, ON K2C 0P9
 536 C FOURTH LINE EAST
 SAULT STE MARIE ON, P6A 6J8

TEL: (613) 800-1583
 TEL: (705) 254-7851
 FAX: (705) 254-5571

DRAWN: DG	FIELD: JCR/A	FILE No:
PROCESSED: SB	CHECKED: SB	25-0276 3210 AlbionRd T.F.



PLAN AND PROFILE
ALBION ROAD SOUTH
WEST DITCH REGRADING AND
REPLACEMENT OF STORM SUBDRAIN

Contract No. **ISD14-2016** Dwg. No. **004**
Sheet **004** of **005**

W. R. NEWELL, P. ENG. **General Manager**
JAMIE MACDONALD, P. ENG. **Project Manager**

Asset No. _____
Asset Group _____

Des. AI Chkd. RT
Dwn. AI Chkd. RT

Utility Circ. No. _____
Index No. _____

Const. Inspector _____

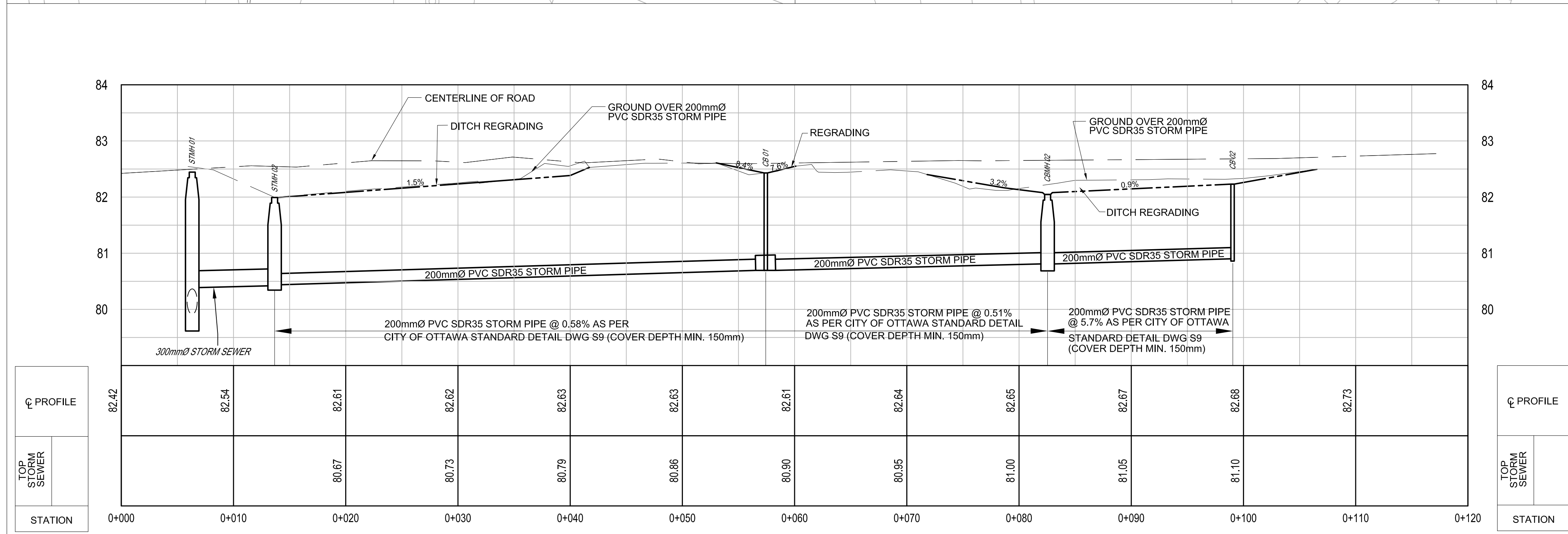
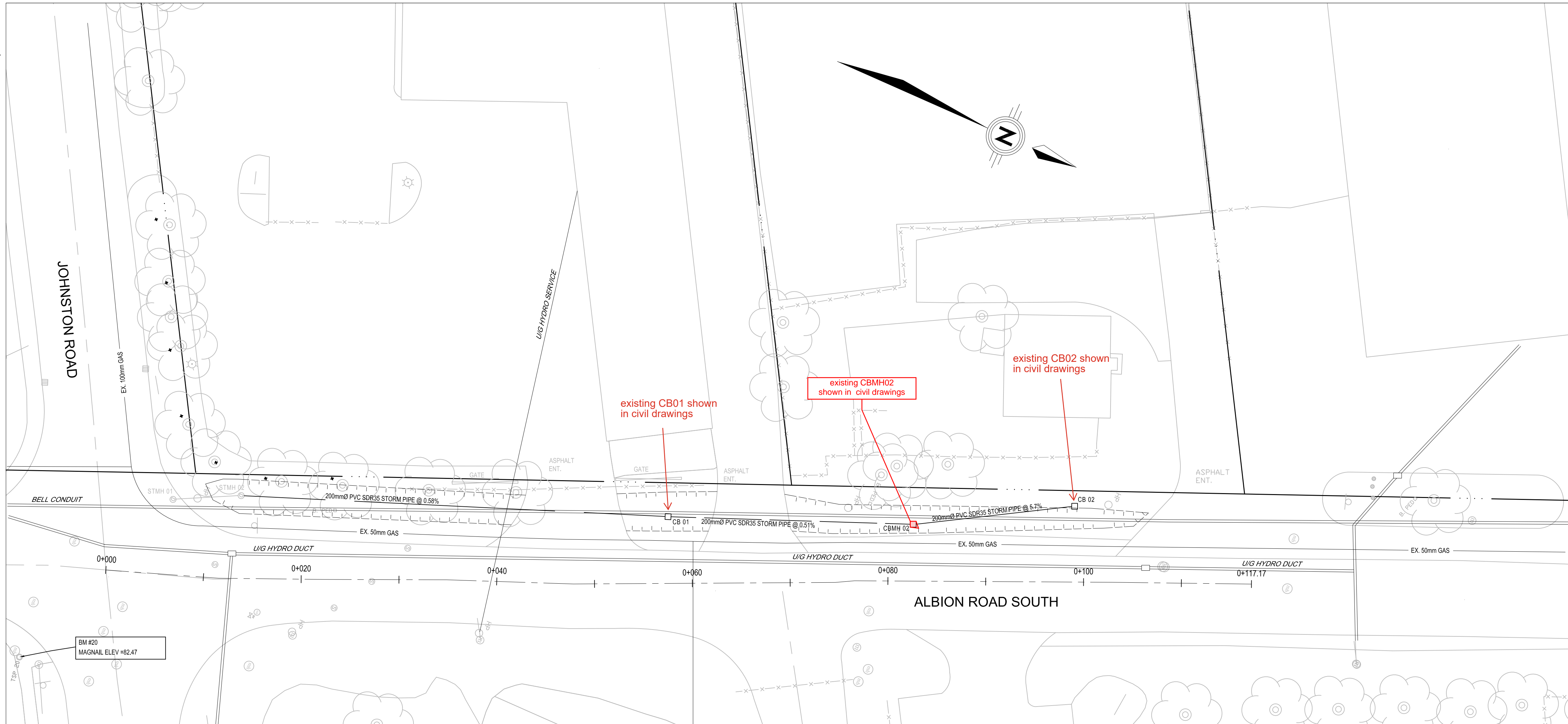
Scale: HORIZONTAL 1 = 250
VERTICAL 1 = 50

NOTE:
The location of utilities is approximate only, the exact location should be determined by consulting the municipal authorities and utility companies concerned. The contractor shall prove the location of utilities and shall be responsible for adequate protection from damage.



No.	Description	By	Date (dd/mm/yy)
1	PRELIMINARY DESIGN CIRCULATION	RT	12/06/14
2	ISSUED FOR UTILITY CIRCULATION	RT	23/06/14
3	ISSUED FOR REVIEW	RT	10/07/14
4	ISSUED FOR TENDER	RT	14/11/14
5	ISSUED FOR CONSTRUCTION	RT	10/02/15
6	ISSUED FOR CONSTRUCTION REV. 01	RT	30/03/15
7	AS-BUILTS	RT	22/01/16
8			

AS-BUILTS
THIS DRAWING HAS BEEN PREPARED, IN PART, BASED UPON INFORMATION FURNISHED BY OTHERS. WHILE THIS INFORMATION IS BELIEVED TO BE RELIABLE, THE CONSULTANT ASSUMES NO RESPONSIBILITY FOR THE ACCURACY OF THIS DRAWING OR FOR ANY ERRORS OR OMISSIONS THAT MAY HAVE BEEN INCORPORATED INTO IT AS A RESULT OF INCORRECT INFORMATION PROVIDED TO THE CONSULTANT. THOSE RELYING ON THIS DRAWING ARE ADVISED TO OBTAIN INDEPENDENT VERIFICATION OF ITS ACCURACY.



STRUCTURE I.D.	SATION	OFFSET	STRUCTURE	COVER	ELEVATION	
					T/F	INV.
STMH 02	0+013.68	-8.73	N/A	S28.1	81.95	80.44
CB 01	0+057.55	-6.83	S30	S30	82.43	80.69
CBMH 02	0+082.55	-5.12	OPSD 705.010	S19	82.05	80.81
CB 02	0+099.02	-7.76	S30	S30	82.23	80.90