

G. Wildman
GERALDINE WILDMAN
 MANAGER, DEVELOPMENT REVIEW SOUTH
 PLANNING, DEVELOPMENT AND BUILDING SERVICES
 DEPARTMENT, CITY OF OTTAWA

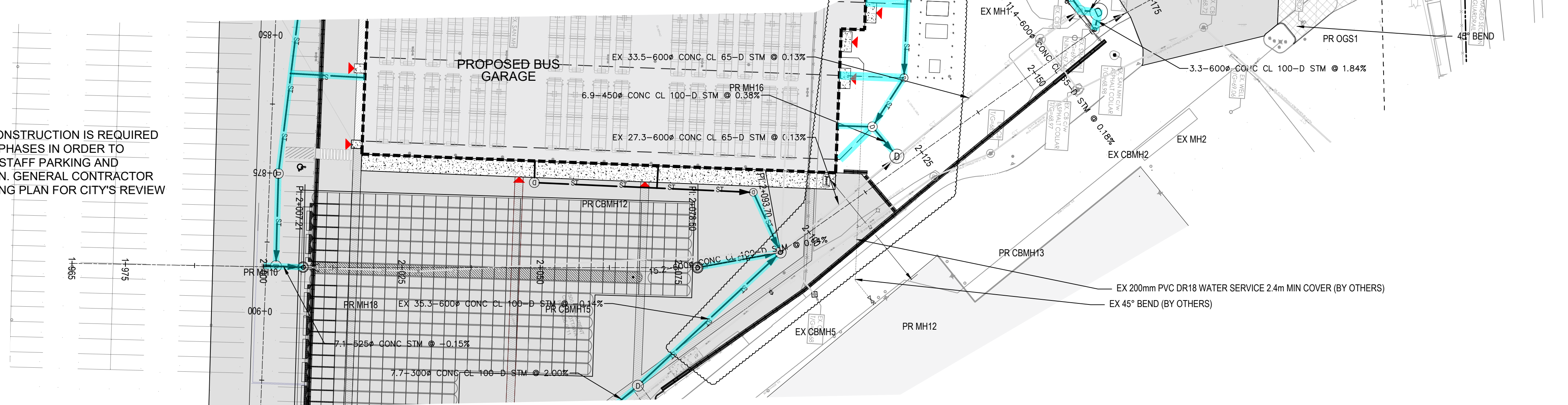
APPROVED
 By wildmange at 9:49 pm, Jun 04, 2026

NOTES:
 THE SANITARY LINE CONSTRUCTION IS REQUIRED TO BE COMPLETED IN PHASES IN ORDER TO MINIMIZE IMPACTS TO STAFF PARKING AND MAINTAIN CIRCULATION. GENERAL CONTRACTOR MUST SUBMIT A PHASING PLAN FOR CITY'S REVIEW AND APPROVAL

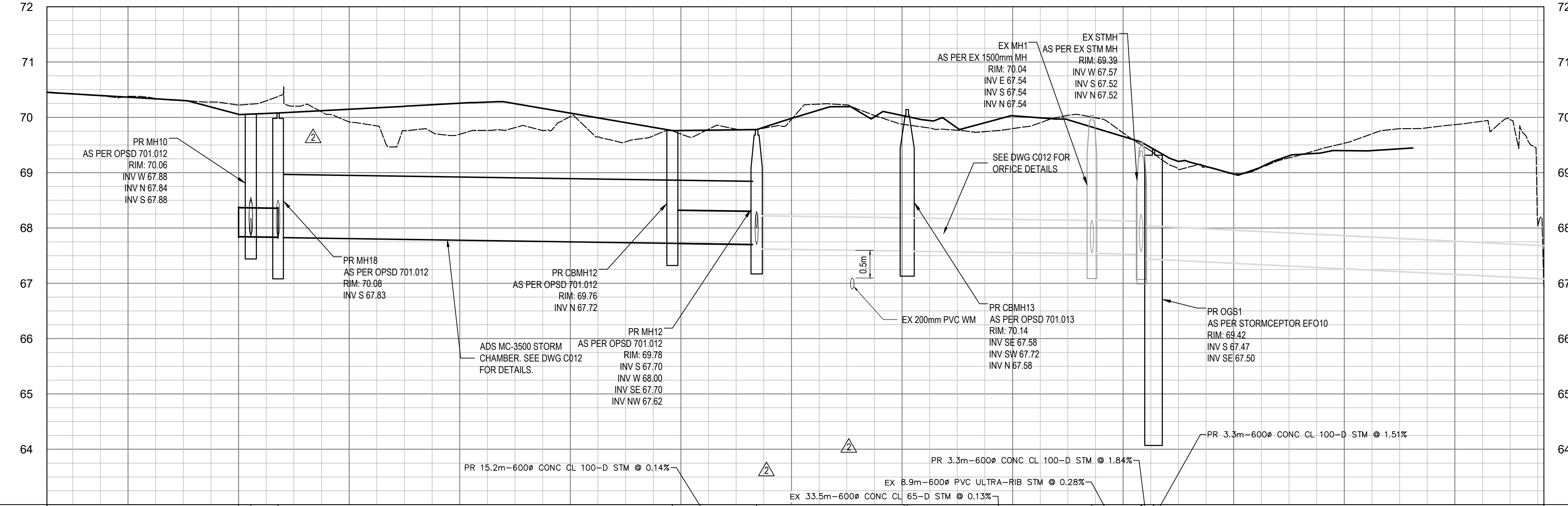
LEGEND

- EX STORM SEWER
- EX SANITARY SEWER
- EX WATERMAIN
- PROP STORM SEWER
- PROP SANITARY SEWER
- PROP WATERMAIN
- SEWER TO BE INSULATED AS PER OPSD 1109.030 (NOTE: CONC PIPE CLASS TO BE 100-D)

NOTES:
 ORIFICE PLATES TO BE PLACED ON CBMH13, EX MH1 AND DCBMH5. SEE DRAWING C012 FOR ORIFICE PLATE LOCATION, SIZE AND INVERTS.



1 | PLAN VIEW



PROPOSED STORM	PR 7.1m-525# CONC STM @ 0.15%															PROPOSED STORM
PROPOSED SANITARY	PR 6.9m-450# CONC CL 100-D STM @ 0.38%															PROPOSED SANITARY
EX/PR CENTERLINE ELEVATION	70.45	70.36	70.06	70.15	70.28	70.28	69.76	69.98	70.03	70.03	69.65	69.65	69.42	69.42	69.42	EX/PR CENTERLINE ELEVATION
CHAINAGE	1+965.34	1+980	2+000	2+020	2+040	2+060	2+080	2+100	2+120	2+140	2+160	2+180	2+200	2+220	2+235.09	CHAINAGE

Ottawa
 INFRASTRUCTURE SERVICES
 DESIGN AND CONSTRUCTION

SERVICES D'INFRASTRUCTURE
 CONCEPTION ET DE CONSTRUCTION

FOR / POUR
 Client - Department
Infrastructure and Water Services Department
 Design & Construction

CONSULTANT
AECOM

PRIME:
 AECOM Canada Architects Ltd.
 50 Sportsworld Crossing Road, Suite 200
 Kitchener, Ontario, N2P 0A4

grc architects

SUBCONSULTANT:
 GRC ARCHITECTS INC.
 47 Clarence Street, Suite 401
 Ottawa, Ontario, K1N 9K1

NOTE:
 IT IS THE RESPONSIBILITY OF THE CONTRACTORS TO INFORM THEMSELVES OF THE EXACT LOCATION OF AND ASSUME ALL LIABILITY FOR DAMAGE TO ALL UTILITIES, SERVICES AND STRUCTURES WHETHER ABOVE GROUND OR BELOW GRADE BEFORE COMMENCING THE WORK. SUCH INFORMATION IS NOT NECESSARILY SHOWN ON THE DRAWING AND WHERE SHOWN, THE ACCURACY CANNOT BE GUARANTEED. WITH THE SOLE EXCEPTION OF THE DIMENSIONS SPECIFICALLY DESCRIBED FOR THIS PROJECT, NO ELEVATION INDICATED OR ASSUMED HEREON IS TO BE USED AS A REFERENCE ELEVATION FOR ANY PURPOSE.

4	ISSUED FOR SPA	2025/03/26	TG
3	REISSUED FOR TENDER	2025/03/26	TG
2	REISSUED FOR TENDER	2025/03/12	TG
1	ISSUED FOR TENDER	2025/12/15	TG

NUMBER MILESTONE/FAIT SAILLANT (NUMÉRO) DATE (Y/M/D) (DATE) INITIALS (INITIALES)

DESIGNED BY / CONCEVU PAR	CG/UCI PAR	CHECKED BY / VÉRIFIÉ PAR	CG/UCI PAR
TG/SS	TG	TG/SS	TG
DRAWN BY / DÉSSINÉ PAR	SS	SCALE / ÉCHELLE	1 : 500

DETAIL NUMBER
1 DRAWING TITLE
 SCALE
 SHEET NUMBER

THIS DRAWING IS THE PROPERTY OF THE CITY OF OTTAWA AND ALL COPYRIGHT IS RESERVED. DIMENSIONS ON DRAWINGS ARE FOR ESTIMATING PURPOSES ONLY. IT IS THE RESPONSIBILITY OF EACH CONTRACTOR AND SUB-CONTRACTOR OR CONSULTANT TO CHECK AND VERIFY ALL DIMENSIONS AND CONDITIONS ON SITE. NOTIFY OWNER OF ANY ERRORS OR OMISSIONS PRIOR TO COMMENCING THE WORK. DO NOT SCALE THE DRAWINGS.

CE DESSIN CONSTITUE LA PROPRIÉTÉ DE LA VILLE D'OTTAWA ET TOUT DROIT DE COPYRIGHT EST RÉSERVÉ. LES DIMENSIONS UTILISÉES LE SONT À DES FINS DESTINATION SEULEMENT. IL INCOMBE À CHAQUE ENTREPRENEUR, SOUS-CONTRACTANT OU CONSULTANT DE VÉRIFIER TOUTES LES DIMENSIONS ET LES CONDITIONS SUR LE CHANTIER. VEUILLEZ INFORMER LE PROPRIÉTAIRE DE TOUTE ERREUR OU OMISSION AVANT D'ENTAMER LES TRAVAUX. NE DRESSÉZ PAS LES PLANS À L'ÉCHELLE.

ARCHITECT / ARCHITECTE
 CONSULTANT / EXPERT-CONSEIL

CONSULTANT / EXPERT-CONSEIL
 CONSULTANT / EXPERT-CONSEIL

LICENCED PROFESSIONAL ENGINEER
T. J. GRANT
 26 Mar 2026
 PROVINCE OF ONTARIO

PROJECT / LOCATION / PROJET / ENDROIT
OTC ZEB-New Garage

Enter address here.

OTTAWA, ONTARIO

DRAWING / DESSIN
EAST STORM PROFILE

BUSINESS ENTITY / NUMÉRO DE L'ENTITÉ
 BUILDING NUMBER / NUMÉRO DU BÂTIMENT
OMF1

CITY PROJECT NO. / NUMÉRO DE PROJET
60716350

CONS. PROJECT NO. / NUMÉRO DE PROJET

SHEET NO. / FEUILLE NO.
C009

File Number D07-12-25-0095
 Plan Number 19357

2 | PROFILE VIEW

SCALE: H 1:500 V 1 : 50