

Distances shown on this plan are ground distances and can be converted to grid distances by multiplying by the combined scale factor of 0.9999xx.

Bearings are grid, derived from Can-Net 2016 Real Time Network GPS observations on reference points A and B, shown hereon, having a bearing of N08°49'40"W and are referenced to Specified Control Points 01919791338 and 01919871649, MTM Zone 9 ( 76°30' West Longitude ) NAD-83 (original).

For bearing comparisons, a rotation of 0°00'50" clockwise was applied to bearings on plan (P2), (P3) and (P4).

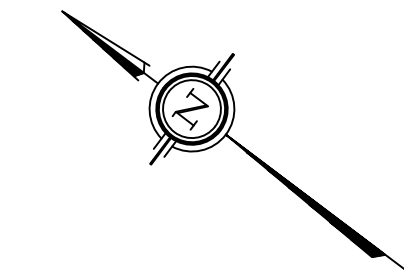
Coordinates are derived from Can-Net 2016 Real Time Network GPS observations referenced to Specified Control Points 01919791338 and 01919871649, MTM Zone 9 (76°30' West Longitude) NAD-83 (original).

Coordinate values are to urban accuracy in accordance with O. Reg. 216/10.

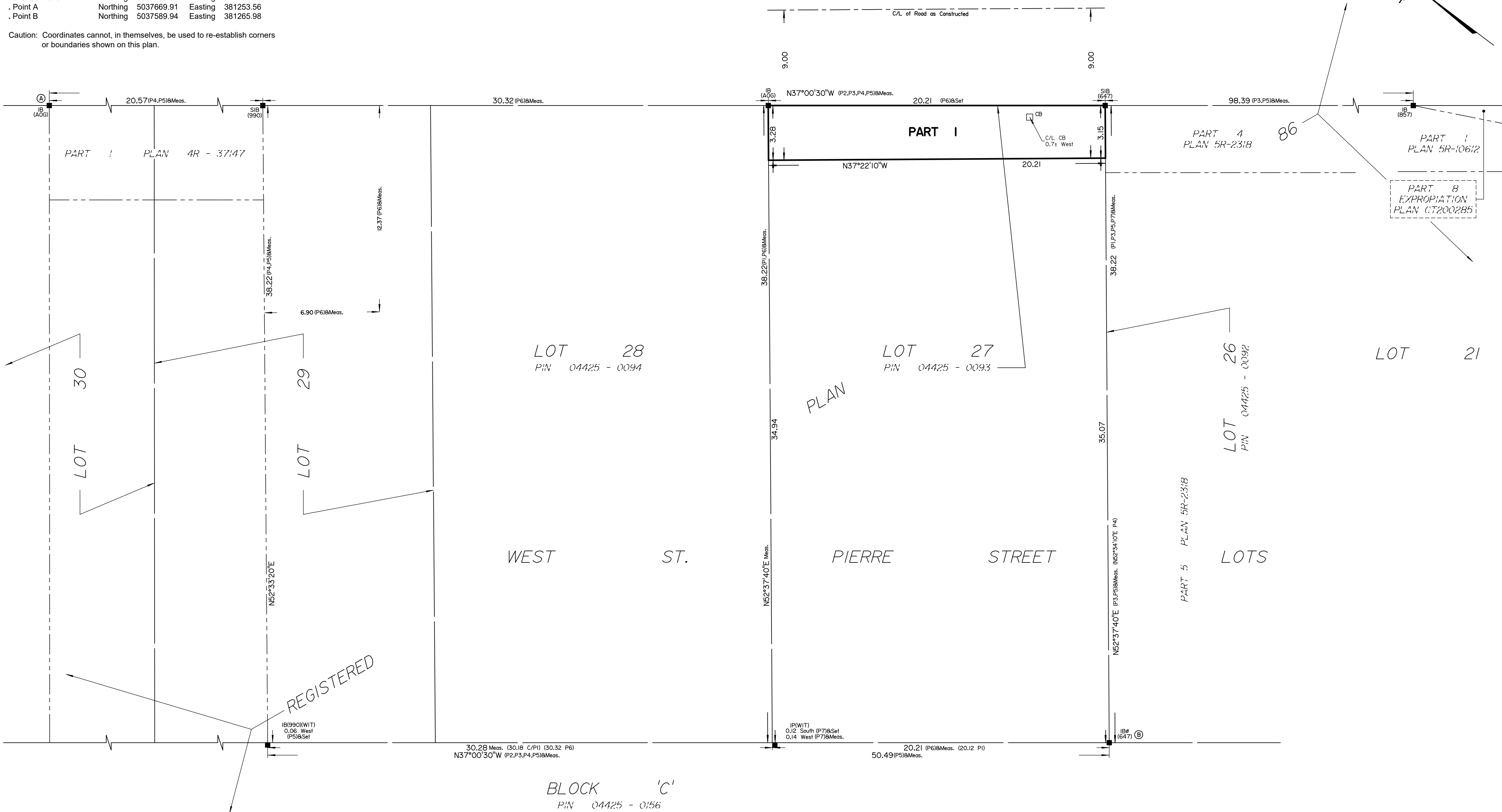
. 01919791338 Northing 5006055.96 Easting 346140.91  
 . 01919871649 Northing 5007189.87 Easting 372435.05  
 . Point A Northing 5037669.91 Easting 381253.56  
 . Point B Northing 5037589.94 Easting 381265.98

Caution: Coordinates cannot, in themselves, be used to re-establish corners or boundaries shown on this plan.

rue ST-PIERRE STREET (Formerly St. Peter Street)  
 ( BY-LAW 2016-372, INST. 001853925 )  
 P/N 04425 - 0114



SCHEDULE				
AREA (Sq.m.)	PART	LOT	PLAN	PIN
65.0	1	PART OF 27	86	PART OF 04425-0093



**PLAN OF SURVEY OF  
 PART OF LOT 27  
 WEST SIDE ST. PIERRE STREET  
 REGISTERED PLAN 86  
 CITY OF OTTAWA**

Surveyed by Annis, O'Sullivan, Vollebek Ltd.  
 Scale 1 : 150



The intended plot size of the plan is 762 mm in width by 457 mm in height when plotted at a scale of 1:150.

**Metric**  
 DISTANCES SHOWN ON THIS PLAN ARE IN METRES AND CAN BE CONVERTED TO FEET BY DIVIDING BY 0.3048

**Surveyor's Certificate**  
 I CERTIFY THAT:  
 1. This survey and plan are correct and in accordance with the Surveys Act, the Surveyors Act and the Land Titles Act and the regulations made under them.  
 2. The survey was completed on the \_\_ day of \_\_\_\_\_, 2026.

MMM DD YYYY Date T. Hartwick Ontario Land Surveyor

This plan of survey relates to AOLS Plan Submission Form Number V-130469

- Notes & Legend**
- Denotes Survey Monument Planted
  - Denotes Survey Monument Found
  - SIB Standard Iron Bar
  - SSIB Short Standard Iron Bar
  - IB Iron Bar
  - IBØ Round Iron Bar
  - IP Iron Pipe
  - (WIT) Witness
  - Meas. Measured
  - (AOG) Annis, O'Sullivan, Vollebek Ltd.
  - (P1) Registered Plan 86
  - (P2) Plan 5R-951
  - (P3) Plan 5R-2318
  - (P4) (AOG) Plan dated May 26, 1987
  - (P5) (AOG) Plan dated June 21, 2023
  - (P6) (990) Plan dated May 4, 1976
  - (P7) (AOG) Plan Dated November 13, 2025
  - (DI) Inst. N620745
  - C/L Centreline
  - CLF Chain Link Fence
  - BF Board Fence
  - OHW Overhead Wires
  - UP Utility Pole
  - AN Anchor