

**PLAN OF SURVEY OF  
PART OF LOT 30  
CONCESSION A (RIDEAU FRONT)  
GEOGRAPHIC TOWNSHIP OF NEPEAN  
CITY OF OTTAWA**  
Surveyed by Annis, O'Sullivan, Vollebakk Ltd.

Scale 1:300  
12 9 6 3 0 6 12 Metres

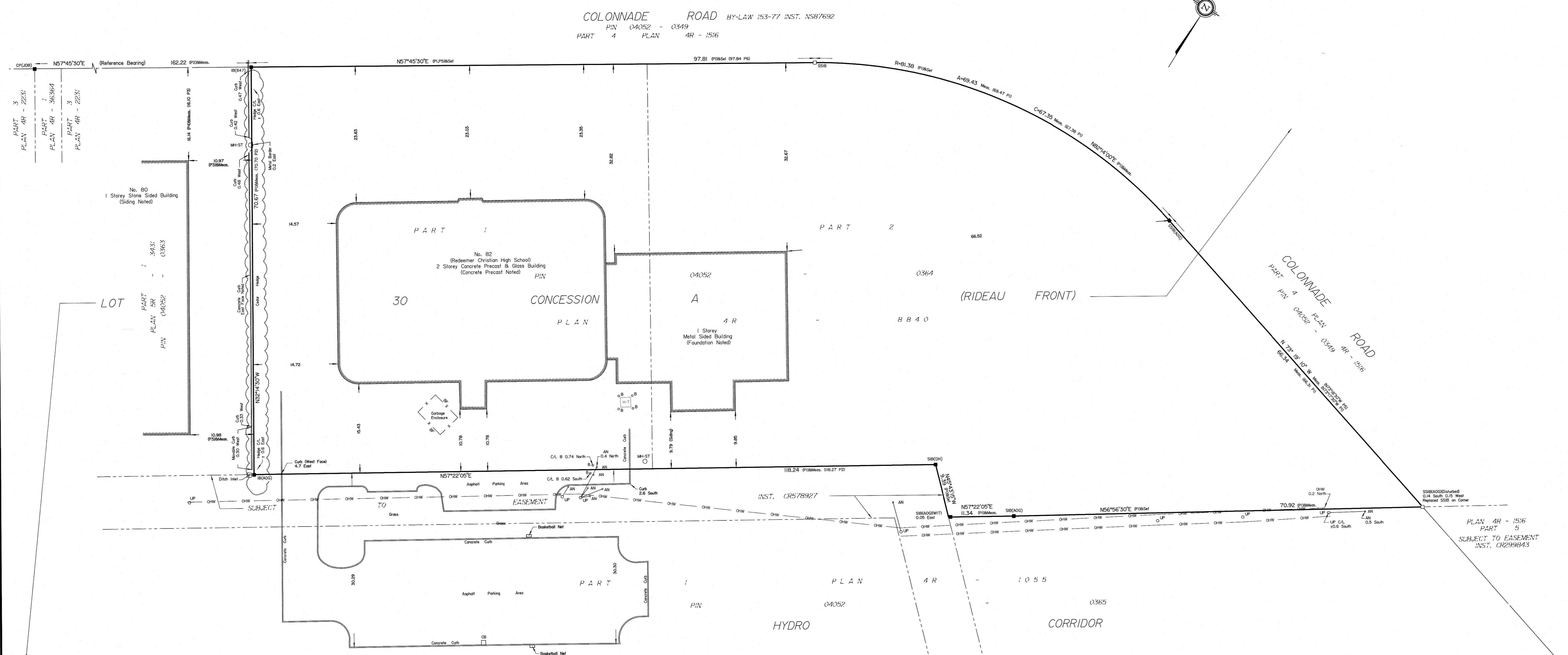
Metric  
DISTANCES SHOWN ON THIS PLAN ARE IN METRES AND  
CAN BE CONVERTED TO FEET BY DIVIDING BY 0.3048

**Surveyor's Certificate**  
I CERTIFY THAT  
1. This survey and plan are correct and in accordance with the Surveys Act, the Surveyors Act and the regulations made under them.  
2. The survey was completed on the 11th day of September, 2025.

September 12, 2025  
Date  
E. H. Herveyer  
Ontario Land Surveyor

**Notes & Legend**

- | Denotes |                                   |
|---------|-----------------------------------|
| —○—     | Survey Monument Planted           |
| —■—     | Survey Monument Found             |
| SIB     | Standard Iron Bar                 |
| SSIB    | Short Standard Iron Bar           |
| IB      | Iron Bar                          |
| CP      | Concrete Pin                      |
| (WIT)   | Witness                           |
| Meas.   | Measured                          |
| (AOG)   | Annis, O'Sullivan, Vollebakk Ltd. |
| (P1)    | Plan 4R-8840                      |
| (P2)    | Plan 4R-38364                     |
| (P3)    | (1188) Plan Dated April 28, 1999  |
| (P4)    | (647) Plan Dated July 7, 1978     |
| (P5)    | Plan 4R-1516                      |
| (P6)    | Plan 4R-3431                      |
| ○MH-ST  | Maintenance Hole (Storm Sewer)    |
| ○B      | Soilard                           |
| BF      | Board Fence                       |
| H-T     | Hydro Transformer                 |
| ○UP     | Utility Pole                      |
| + AN    | Anchor                            |
| C/L     | Centreline                        |
| □CB     | Catch Basin                       |
| —OHW—   | Overhead Wires                    |



Bearings are grid, derived from Can-Net 2016 Real Time Network  
GPS observations, MTM Zone 9 (76°30' West Longitude) NAD-83  
(CSRS) (2010).

LOT 29  
CONCESSION A  
(RIDEAU FRONT)  
PART 4  
PLAN SR - 13865  
PART 5  
PLAN SR - 1055

ASSOCIATION OF ONTARIO  
LAND SURVEYORS  
PLAN SUBMISSION FORM  
V-110968

THIS PLAN IS NOT VALID UNLESS  
IT IS AN EMBOSSED ORIGINAL  
COPY ISSUED BY THE SURVEYOR  
In accordance with  
Regulation 1005, Section 29 (2).