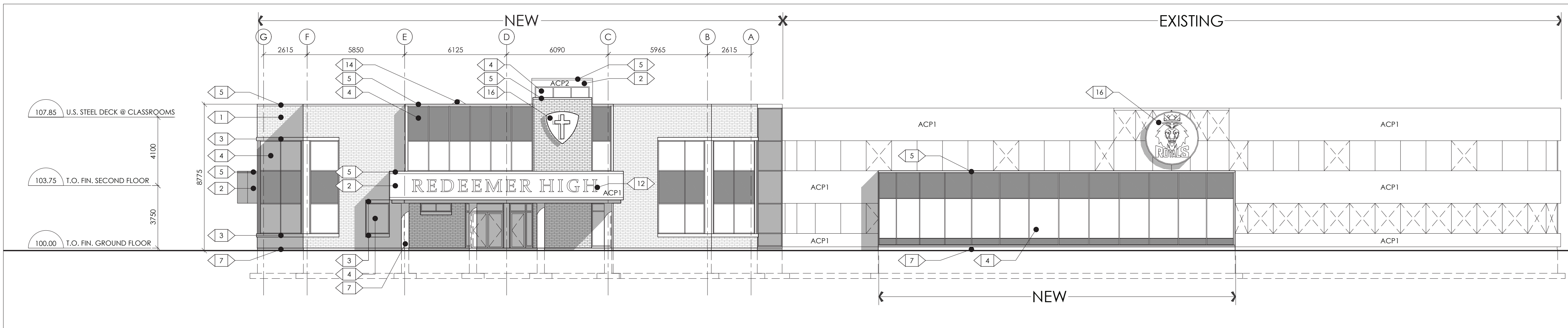
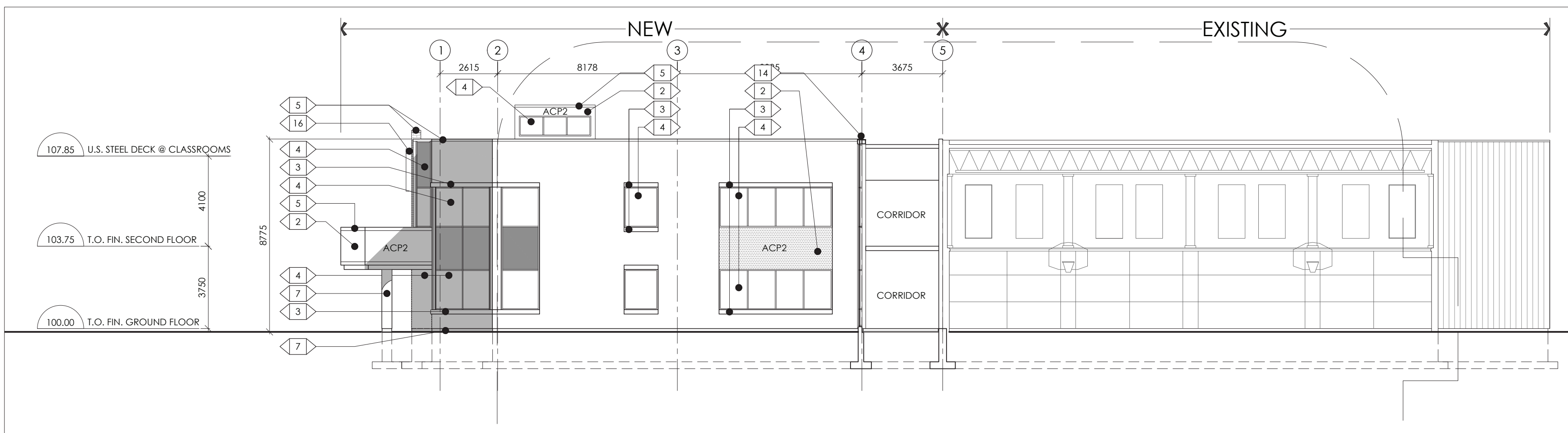


01 EAST ELEVATION
SCALE: 1:150



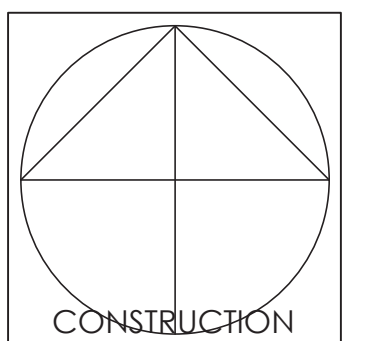
02 NORTH ELEVATION
SCALE: 1:150



03 WEST ELEVATION
SCALE: 1:150

NO.	REVISION	DATE
1	ISSUED FOR SITE PLAN APPLICATION	JUNE 2/2026

- 1 BRICK MASONRY
COLOUR: RED/ORANGE
MAX SIZE (79/257/90MM)
- 2 ALUMINUM COMPOSITE PANEL
COLOUR: ACP1 (FIELD) =
COLOUR: ACP2 (ACCENT) =
- 3 PRECAST CONCRETE
COLOUR: SEALED EXPOSED CONCRETE. SEE SPECS.
- 4 WINDOW (SEE WINDOW SCHEDULE)
MATERIAL: ALUMINUM / FIBREGLASS
COLOUR: BLACK
- 5 PREFINISHED METAL PARAPET CAP
- 6 EMERGENCY OVERFLOW SCUPPER
- 7 EXPOSED CAST IN PLACE CONCRETE
SEE STRUCTURAL DWGS
- 8 MECHANICAL EXHAUST VENT
- 9 PREFINISHED LINEAR METAL SOFFIT
- 10 ROOFTOP HVAC UNIT (SEE MECH.)
- 11 MASONRY EXPANSION JOINT BELOW
CONTINUOUS SHELF ANGLE
- 12 FABRICATED STAINLESS STEEL LETTERS. SEE SPECS.
- 13 PREFINISHED METAL FLASHING
COLOUR: TO MATCH CLADDING/VENEER
- 14 ROOFTOP SKYLIGHT
- 15 PREFINISHED METAL FASCIA
COLOUR: BLACK
- 16 ILLUMINATED SIGNAGE



Vandenberg & Wildeboer
A · R · C · H · I · T · E · C · T · S

www.vandenberg.ca Telephone: 613.357.0144 Fax: 613.371.8609 email: vandenberg@vandenberg.ca
7185 OLD FINE LINE ROAD • 100 RIVERVIEW DRIVE • COTTAWOOD DRIVE • COTTAWOOD • ONTARIO

PROJECT TITLE
REDEEMER CHRISTIAN HIGH SCHOOL
82 COLONNADE ROAD N. OTTAWA, ON K2E 7L2

DRAWING TITLE
ELEVATIONS

DESIGNED BY: RV
DRAWN BY: JN
START DATE: 2025
SCALE: AS SHOWN
PROJECT NO.: 2504

DATE: **A200**