

ELEVATION LEGEND

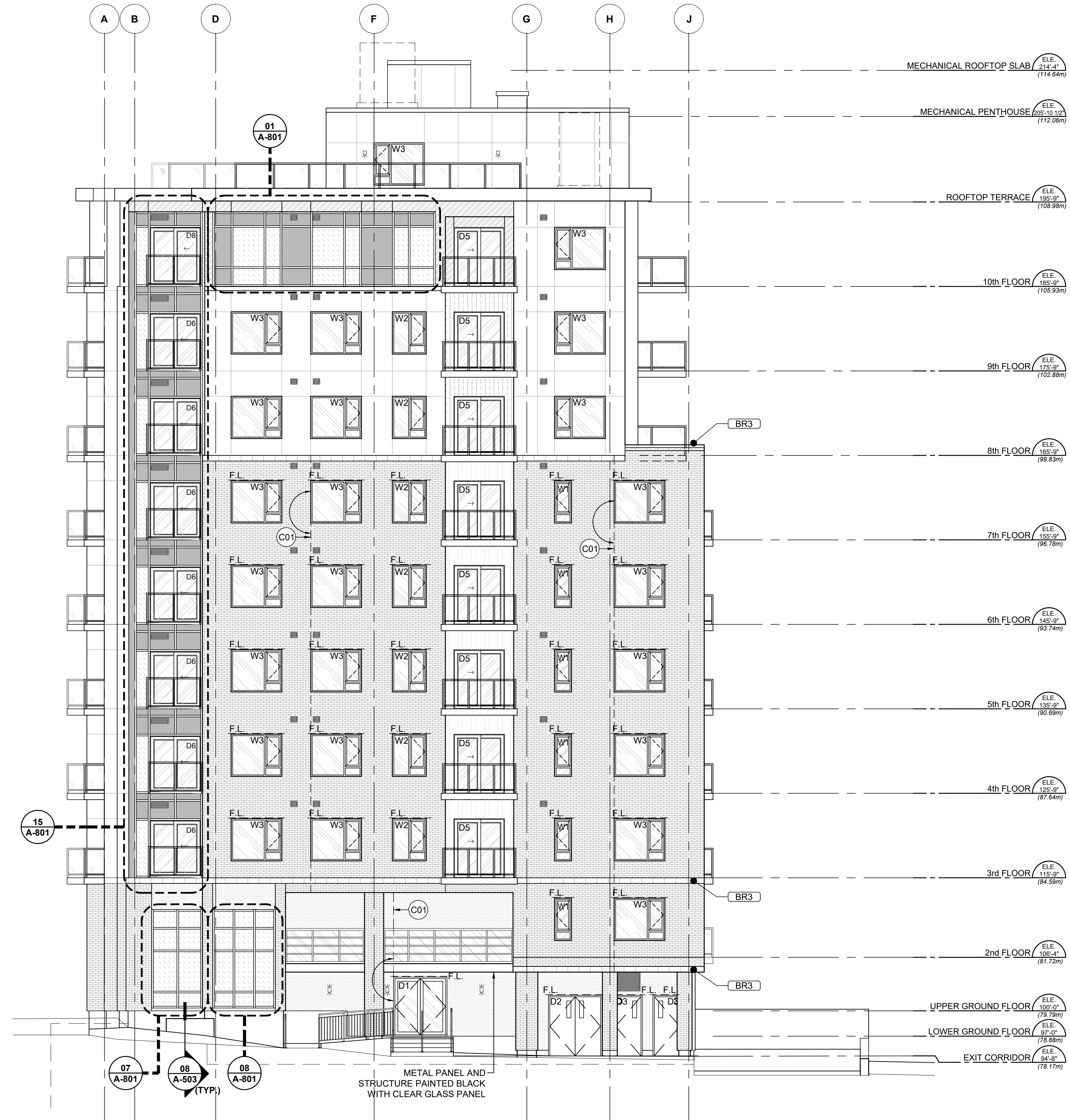
BR1 RED BLEND SMOOTH	MASONRY CLADDING / BRICK: ENDICOTT BRICK ARCHITECTURAL SERIES FORMAT MODULAR DIMENSIONS 7 5/8" (194mm) x 3 5/8" (92mm) x 2 1/2" (57mm) COLOUR SEE BESIDE	F1 FLASHING AND FASCIA OF THE PARAPET PRE PAINTED STEEL TYPE : ALPOLIC OR EQUIVALENT COLOUR: TO MATCH CONCRETE	M3 METAL PANEL PREFINISH ALUMINIUM TYPE : DIZAL MAIBEC OR EQUIVALENT COLOUR: 8000 DEEP BLACK	G1 CURTAIN WALL	GLAZING: FRAME : ALUMINIUM COLOUR : BLACK GLASS : THERMOS CLEAR
BR2 DESERT IRONSPOT LIGHT		F2 SOFFIT: PREFINISH ALUMINIUM COLOUR: TO MATCH CONCRETE		G2 STANDARD WINDOW	GLAZING: FRAME : ALUMINIUM COLOUR : BLACK GLASS : THERMOS CLEAR
BR3	MASONRY CLADDING / BLOC: TECHO BLOC ARCHITECTURAL COLLECTION FORMAT 8X16 DIMENSIONS 15 3/8" (390mm) x 3 3/8" (90mm) x 7 1/2" (190mm) COLOUR : ELEGANT WHITE, POLISHED / BEV	M1 METAL PANEL PREFINISH ALUMINIUM TYPE : DIZAL MAIBEC OR EQUIVALENT FINISH: WOOD GRAIN COLOUR: WHITE OAK LIGHT GREY		TP1	SPANDREL PANEL: FRAME : ALUMINIUM COLOUR : BLACK GLASS : THERMOS CLEAR WITH OPAQUE BAKING
PP1	COMPOSITE CONCRETE PANEL: CEMFORT OR REICCO DURRACO COMPOSITE PANEL WITH CONCEAL ANCHOR CEM-CORE SYSTEM SERIES XPRESSION STONE MATTE- FINE-GRAIN FINISH COLOUR : WHITE F-54	M2 METAL PANEL PREFINISH ALUMINIUM TYPE : DIZAL MAIBEC OR EQUIVALENT FINISH : WOOD GRAIN COLOUR: JATOBA TO MATCH BRICK B1		H1	BALCONY GUARDRAIL CLEAR TEMPERED GLASS HANDRAIL AND ALUMINIUM SUPPORT COLOUR: BLACK
P1	ACRYLIC PLASTER APPLY ON CONCRETE PANEL U.O.S. COLOUR : CONCRETE COLOR				

GENERAL NOTES

- REFER TO PAGES A-001 FOR ALL ANNOTATIONS, ABBREVIATIONS, LEGENDS, AND SYMBOLS.
- ELEMENTS BELOW GRADE ARE SHOWN IN SECTION FOR REFERENCE ONLY.
- STRUCTURE AND FOUNDATIONS ARE REPRESENTED FOR GRAPHIC PURPOSES ONLY. SEE STRUCTURAL DRAWINGS FOR EXACT LOCATIONS AND SLOPES.
- SEE STRUCTURAL DRAWINGS FOR POSITIONS OF STRUCTURAL LINTELS.
- PROVIDE A FREE LINTEL ABOVE ALL OPENINGS IN MASONRY CLADDING (DOORS, WINDOWS, LOUVERS, ETC.).
- MATCH THE COLOUR OF LOUVERS TO ADJACENT FINISHES.
- FOR ALL LOUVER PLACEMENTS, REFER TO ENGINEERING DOCUMENTS; FINISH TO MATCH ADJACENT WALL FINISH.
- ALL VISIBLE FOUNDATION WALL FINISH ARE .
- U.O.S. FLASHING AND FASCIA FINISH ARE .
- U.O.S. SOFFIT FINISH IS .
- U.O.S. STEEL DOOR AND FRAME ARE PAINTED BLACK.
- U.O.S. STEEL GUARDRAIL AND HANDRAIL ARE GALVANIZED AND PAINTED BLACK.

KEYNOTES

- EXPANSION JOINT IN MASONRY VENEERS, 12mm WIDE, CONSISTING OF 19mm BACKER ROD COMPRESSED SUCH AS ADSEAL BR-2600 AND SINGLE-COMPONENT SEALANT, SUCH AS ADSEAL DWS 4580 OR APPROVED EQUIVALENT. SEE TYPICAL DETAIL 09/A-503.



Andrew McCreight
ANDREW MCCREIGHT
 MANAGER, DEVELOPMENT REVIEW CENTRAL
 PLANNING, DEVELOPMENT & BUILDING SERVICES
 DEVELOPMENT DEPARTMENT, CITY OF OTTAWA

APPROVED
 By Andrew McCreight at 1:23 pm, Jun 01, 2026

WEST ELEVATION 01
 SCALE 1/8" = 1'-0" (1:96) A-300

VAUDREUIL DORION
 200 AV. ST-CHARLES, VAUDREUIL-DORION (QC) J7V 2L3
 LAVAL
 3775 BOUL. LÉVESQUE O., BUR200 LAVAL (QC) H7V 1G5
 CLARCHITECTES CA T 450 424 8345
 INFO@CLARCHITECTES.CA F 450 424 4867

CLIENT:
GROUPE MB CANADA INC.
 230A, HARWOOD BOULEVARD
 VAUDREUIL-DORION (QUÉBEC) J7V 0L4

THIS DOCUMENT SHOULD NOT BE USED FOR CONSTRUCTION PURPOSES

NO.	EMISSON	DATE	ISSUED BY
06	SITE PLAN APPROVAL REV.6	2026.05.19	J.C.
05	ISSUED FOR BUILDING PERMIT	2026.04.13	J.C.
04	COORDINATION 70%	2026.03.08	J.C.
03	SITE PLAN APPROVAL REV.2	2026.01.27	J.C.
02	SITE PLAN APPROVAL REV.1	2026.01.14	J.C.
01	SITE PLAN APPROVAL	2025.12.19	J.C.

REVISION(S) :



GENERAL NOTES:
 THIS PLAN REMAINS THE EXCLUSIVE PROPERTY OF THE ARCHITECT. ANY USE FOR OTHER PURPOSES THAN FOR THE PROJECT MENTIONED IN TITLE IS PROHIBITED UNLESS A WRITTEN AUTHORIZATION FROM THE ARCHITECT.

ALL WORK MUST BE PERFORMED IN ACCORDANCE WITH THE NATIONAL BUILDING CODE AND ALL OTHER APPLICABLE CODES, STANDARDS AND REGULATIONS.

THE CONTRACTOR CAN NOT SCALE TO THE PLAN. HE MUST CHECK ALL DIMENSIONS, LEVEL, DETAILS, SPECIFICATIONS AND CONDITIONS ON THE SITE BEFORE STARTING WORK.

THE CONTRACTOR MUST ADVISE PROFESSIONALS OF ANY DISCREPANCIES BETWEEN THE CONSTRUCTION DOCUMENTS AND THE SITE.

SEAL:

PROJECT : **630 RACINE OTTAWA**

630 MONTREAL ROAD,
 OTTAWA (ONTARIO) K1K 2L8

CLIENT PROJECT NO.: D07-12-21-0189

DRAWING:
 WEST ELEVATION

DATE: 25-10-2025 NO. CASE: 25-11-1182
 SCALE: 1/8" = 1'-0" (1:96) SHEET:
 DRAWN BY: J.C.T. & E.R. **A-300**
 APPROVED BY: J.C.