

1 MAINTENANCE EDGE AND PLANTING BED ON SLAB DETAIL  
L-04 Scale: NTS

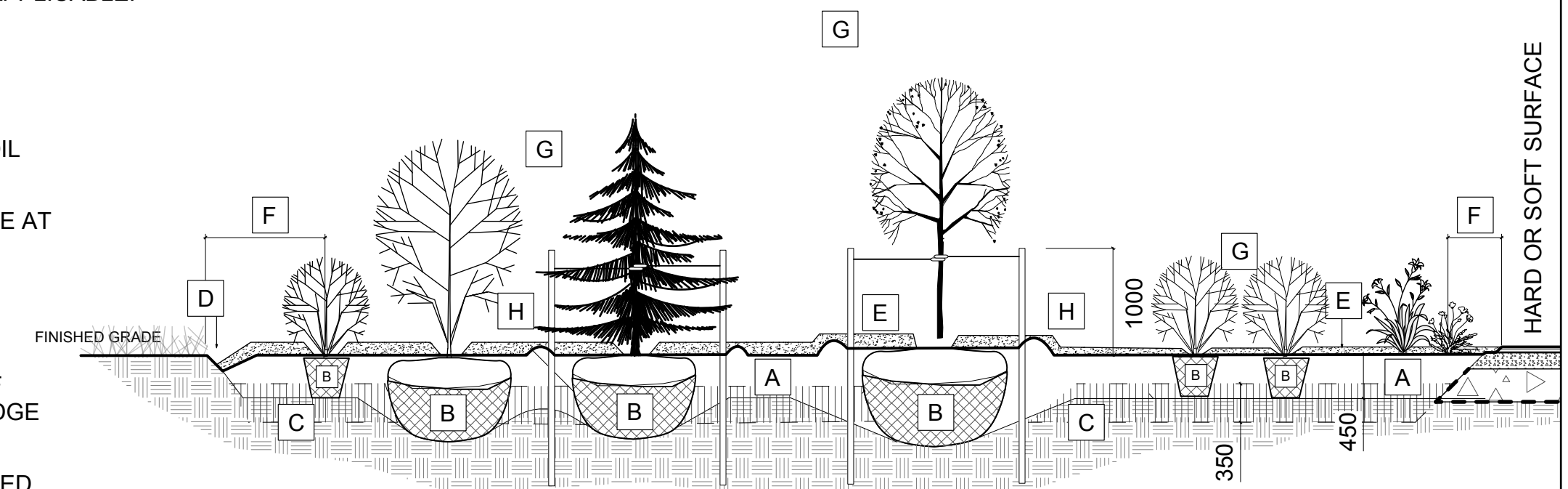
**Bed Preparation**

- EXCAVATE OR PLACE FILL FOR PLANTING BED TO PROVIDE 450mm MINIMUM DEPTH OF PLANTING MEDIUM. PLANTING BED TO BE DEEPENED AT TREE LOCATIONS. IF BASE OF PIT IS OVER EXCAVATED, RAISE BOTTOM TO PROPER LEVEL WITH COMPACTED PLANTING MEDIUM.
- PLACE 150mm PLANTING MEDIUM ON SUBGRADE AND CULTIVATE INTO TOP 200mm OF SUBSOIL. SEE NOTE BELOW.
- PLACE REMAINDER OF PLANTING MEDIUM OVER CULTIVATED PORTION TO ACHIEVE FINAL GRADE.
- CENTRE OF BED TO BE CROWNED ABOVE ADJACENT GRADE TO APPROVAL OF CONSULTANT.
- ENSURE POSITIVE DRAINAGE AWAY FROM BUILDING WALLS WHERE APPLICABLE.

**Tree Planting**

- CUT AND REMOVE TOP 1/3 OF BURLAP AND WIRE BASKET FROM ROOTBALL.
- PLACE 2-METAL POSTS (40 x 40 x 2100 mm) AT OUTSIDE OF ROOTBALL AND FASTEN TO TRUNK WITH APPROVED TREE TIES.
- WATER THOROUGHLY SUBSEQUENT TO PLANTING.
- WRAP TREE TRUNK AFTER INSPECTION OF TREES BY LANDSCAPE ARCHITECT.
- PROTECT TREE FROM RODENT DAMAGE.
- REMOVE TREE RINGS, STAKES AND TRUNK WRAPPING AFTER WARRANTY PERIOD.

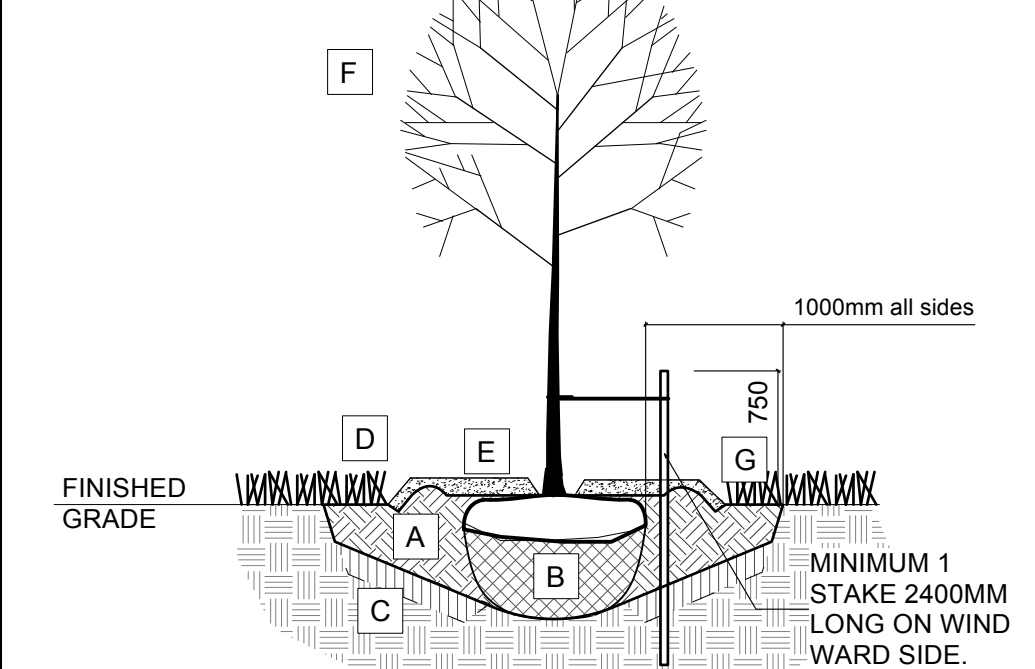
- A 450mm COMPACTED PLANTING MEDIUM, DEEPEN AT TREES
- B ROOTBALL, TOP OF ROOT CROWN TO BE FLUSH WITH PLANTING SOIL AND 50mm ABOVE SOIL OUTSIDE PLANTING PIT / POT
- C 350mm PLANTING MEDIUM / SUBSOIL CULTIVATED LAYER. CULTIVATE AT TREE PIT BOTTOM. SEE NOTE BELOW.
- D EDGE TO DEPTH OF 100mm
- E 50-75 mm MULCH LAYER, KEEP MULCH AWAY FROM STEMS
- F FIRST ROW OF PERENNIALS TO BE PLANTED 600mm FROM EDGE OF BED/CURB FIRST ROW OF SHRUBS TO BE PLANTED 900mm FROM EDGE OF BED/CURB
- G PRUNE DAMAGED, DISEASED OR WEAK BRANCHES AS PER ACCEPTED HORTICULTURAL PRACTICE. DO NOT DAMAGE OR REMOVE LEADER
- H PROVIDE 150 mm DEEP SAUCER AT TREES



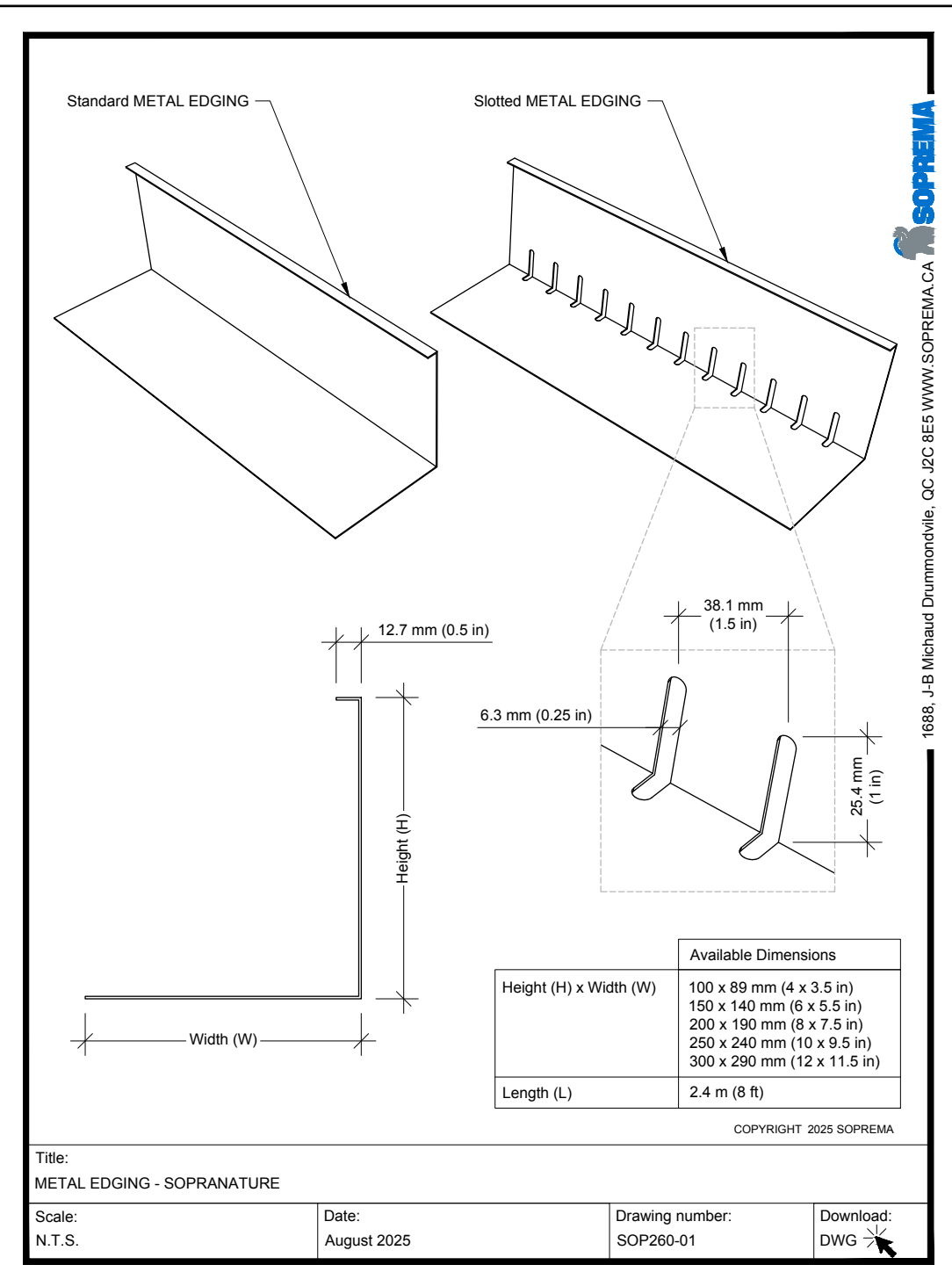
NOTES:  
- PLANTING BED AREAS EXCAVATED TO 500mm BELOW FINAL GRADE FOR ROUGH GRADE  
- REFER TO PLANT LIST FOR PLANT SPACING.

3 PLANTING BED DETAIL ON GRADE  
L-04 Scale: NTS

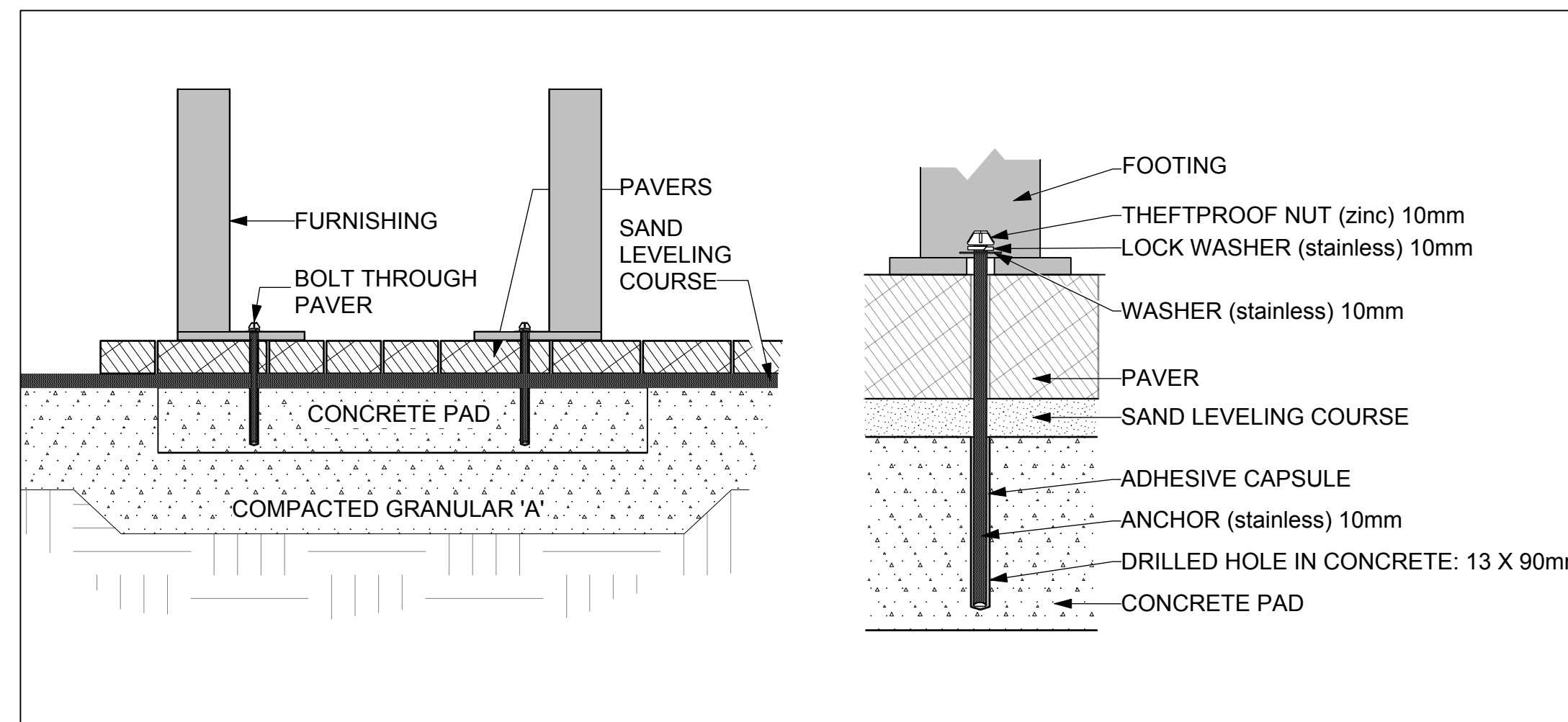
- A COMPACTED PLANTING MEDIUM
- B ROOTBALL, TOP OF ROOT CROWN TO BE FLUSH WITH PLANTING SOIL AND 50mm ABOVE SOIL OUTSIDE PLANTING PIT
- C LOOSEN PIT BOTTOM TO DEPTH OF 200mm (EXCEPT IMMEDIATELY BENEATH ROOT BALL). IF BASE OF PIT IS OVER EXCAVATED RAISE TO PROPER LEVEL WITH COMPACTED TOPSOIL
- D EDGE TO DEPTH OF 100mm
- E 50-75 mm MULCH LAYER, KEEP MULCH AWAY FROM STEMS
- F PRUNE DAMAGE, DISEASED OR WEAK BRANCHES AS PER ACCEPTED HORTICULTURAL PRACTICE. DO NOT DAMAGE OR REMOVE LEADER
- G PROVIDE 150 mm DEEP SAUCER AT TREES



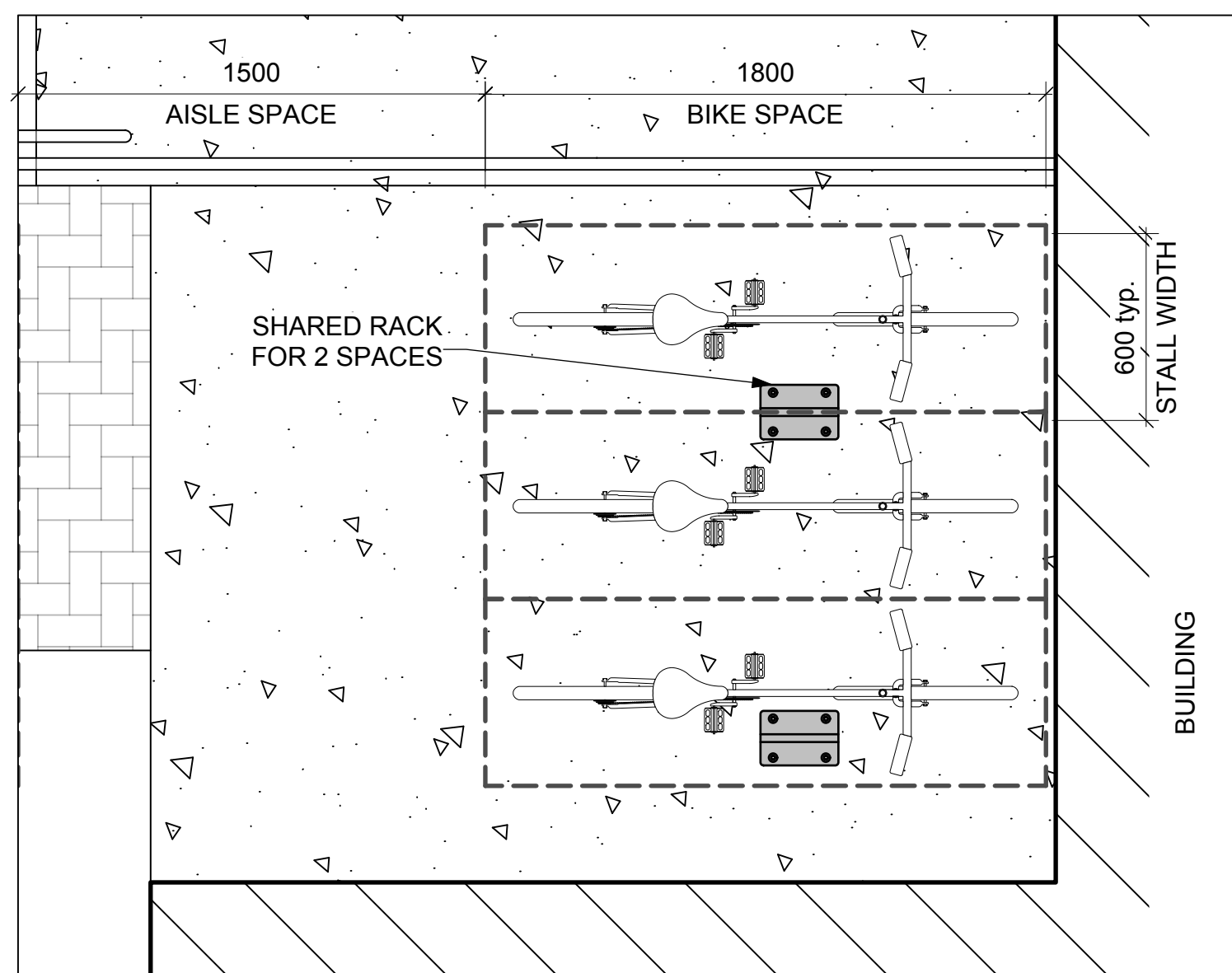
- TREE PLANTING:
- CUT AND REMOVE TOP 1/3 OF BURLAP AND WIRE BASKET FROM ROOTBALL.
  - PLACE 2-METAL POSTS (40 x 40 x 2100 mm) AT OUTSIDE OF ROOTBALL AND FASTEN TO TRUNK WITH APPROVED TREE TIES.
  - WATER THOROUGHLY SUBSEQUENT TO PLANTING.
  - WRAP TREE TRUNK AFTER INSPECTION OF TREES BY LANDSCAPE ARCHITECT.
  - PROTECT TREE FROM RODENT DAMAGE.
  - REMOVE TREE RINGS, STAKES AND TRUNK WRAPPING AFTER WARRANTY PERIOD.



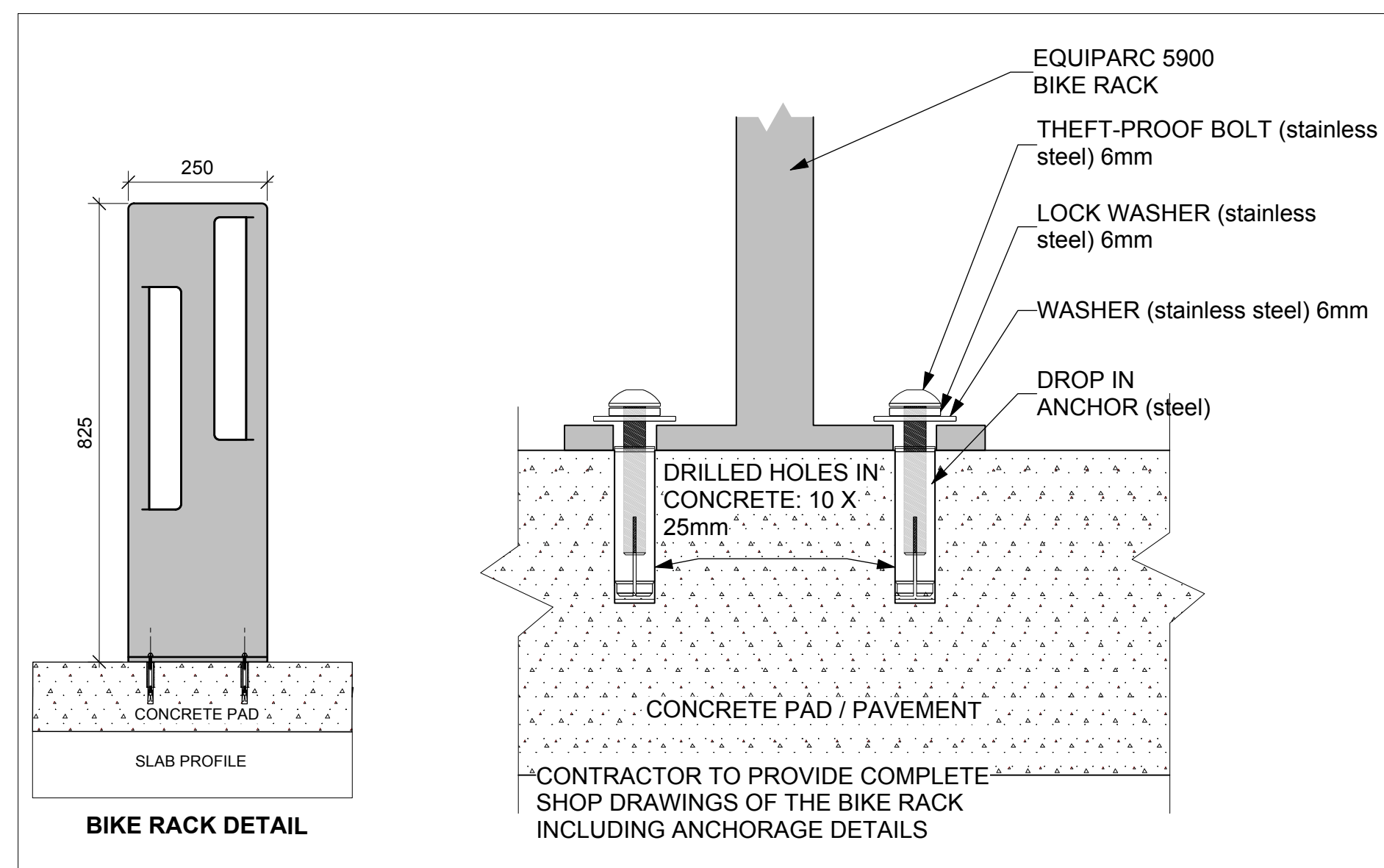
4 BENCH ANCHOR DETAIL INTO CONCRETE PAD THROUGH PAVERS  
L-04 Scale: NTS



2 TREE PLANTING ON GRADE  
L-04 Scale: NTS



5 TYPICAL BIKE RACK LAYOUT - BORTHWICK AVE SERVICE ENTRANCE  
L-04 Scale: NTS



6 BIKE RACK ELEVATION & INSTALLATION ON CONCRETE PAD  
L-04 Scale: NTS

*Andrew McCreight*  
**ANDREW MCCREIGHT**  
MANAGER, DEVELOPMENT REVIEW CENTRAL  
PLANNING, DEVELOPMENT & BUILDING SERVICES  
DEVELOPMENT DEPARTMENT, CITY OF OTTAWA

**APPROVED**  
By Andrew McCreight at 1:26 pm, Jun 01, 2026

3	Issued for Building Permit	2026-04-10
2	Issued for 100% Review Set	2026-04-08
1	Issued for 50% Drawing Set	2026-03-06
no.	issue / revision	date

seal  
north  
2026-04-10

**Ruhland & Associates Ltd**  
landscape architecture • urban design • site planning  
Ph 613-224-4744 Fx 613-224-3131 info@rala.ca www.rala.ca

project  
**630 MONTREAL ROAD APARTMENT BUILDING COMPLEX**  
630 MONTREAL RD., OTTAWA, ON

drawing title  
**DETAILS**

scale	drawn by T.F./N.W.	designed by M.R.
date MARCH 02	checked by V.O.	plot date March 02
project number <b>26-1778</b>	drawing number <b>L-04</b>	

Contractor to check and verify all dimensions on the job