

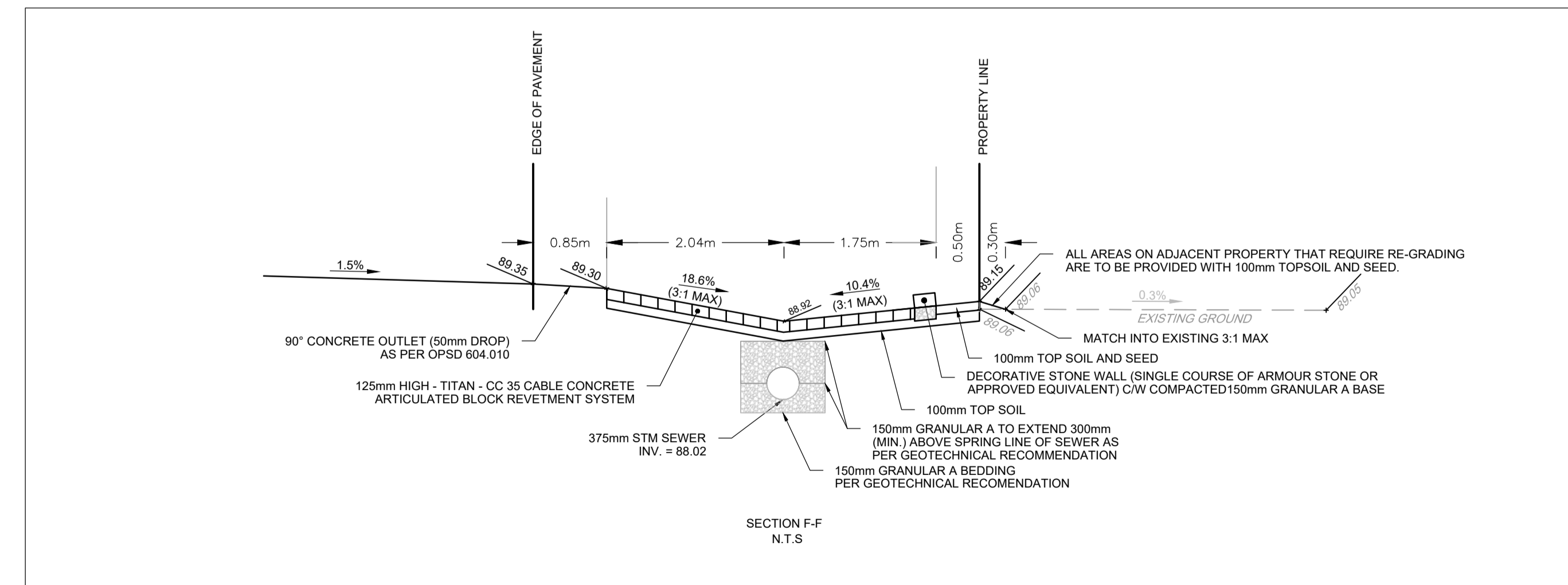
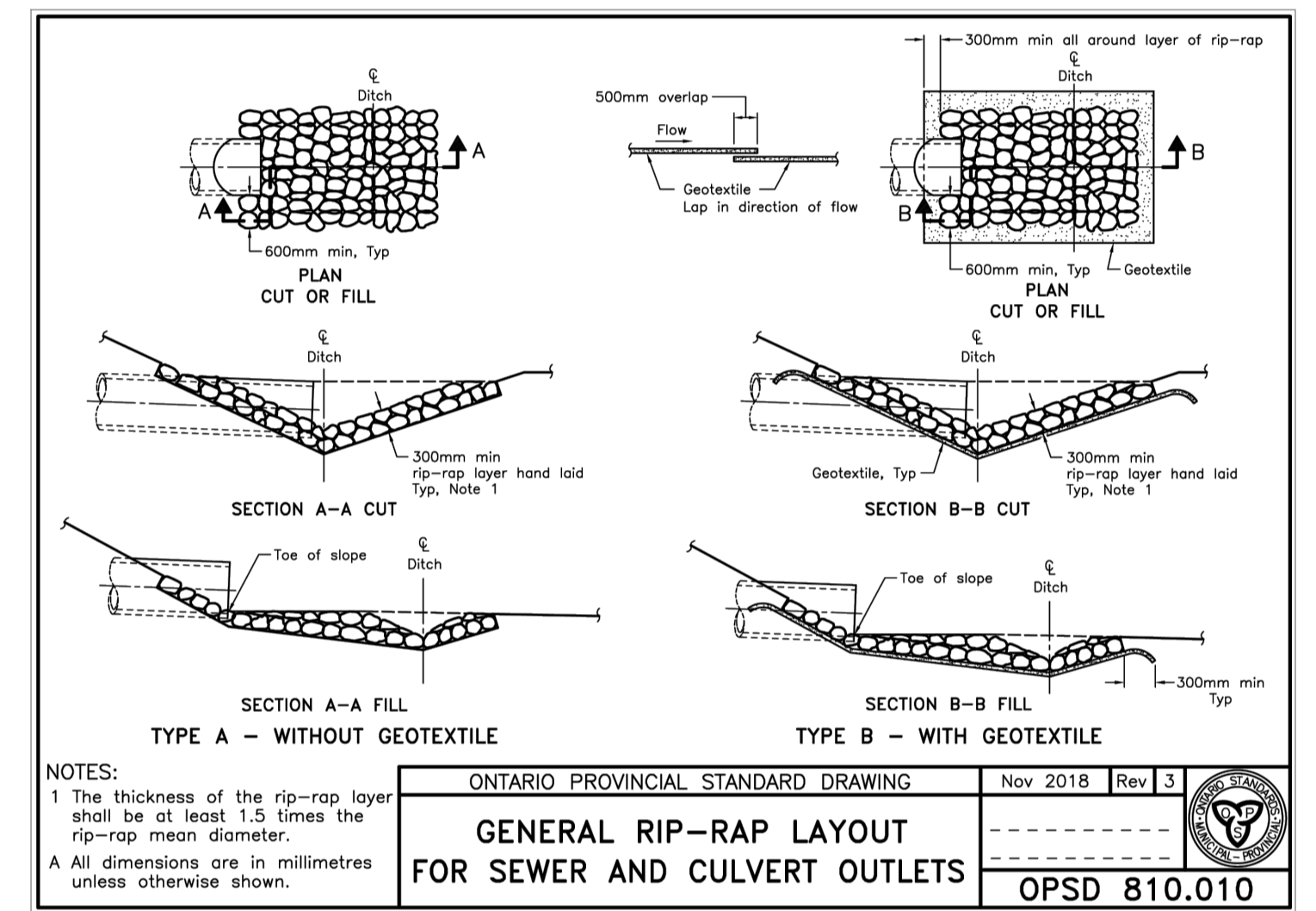
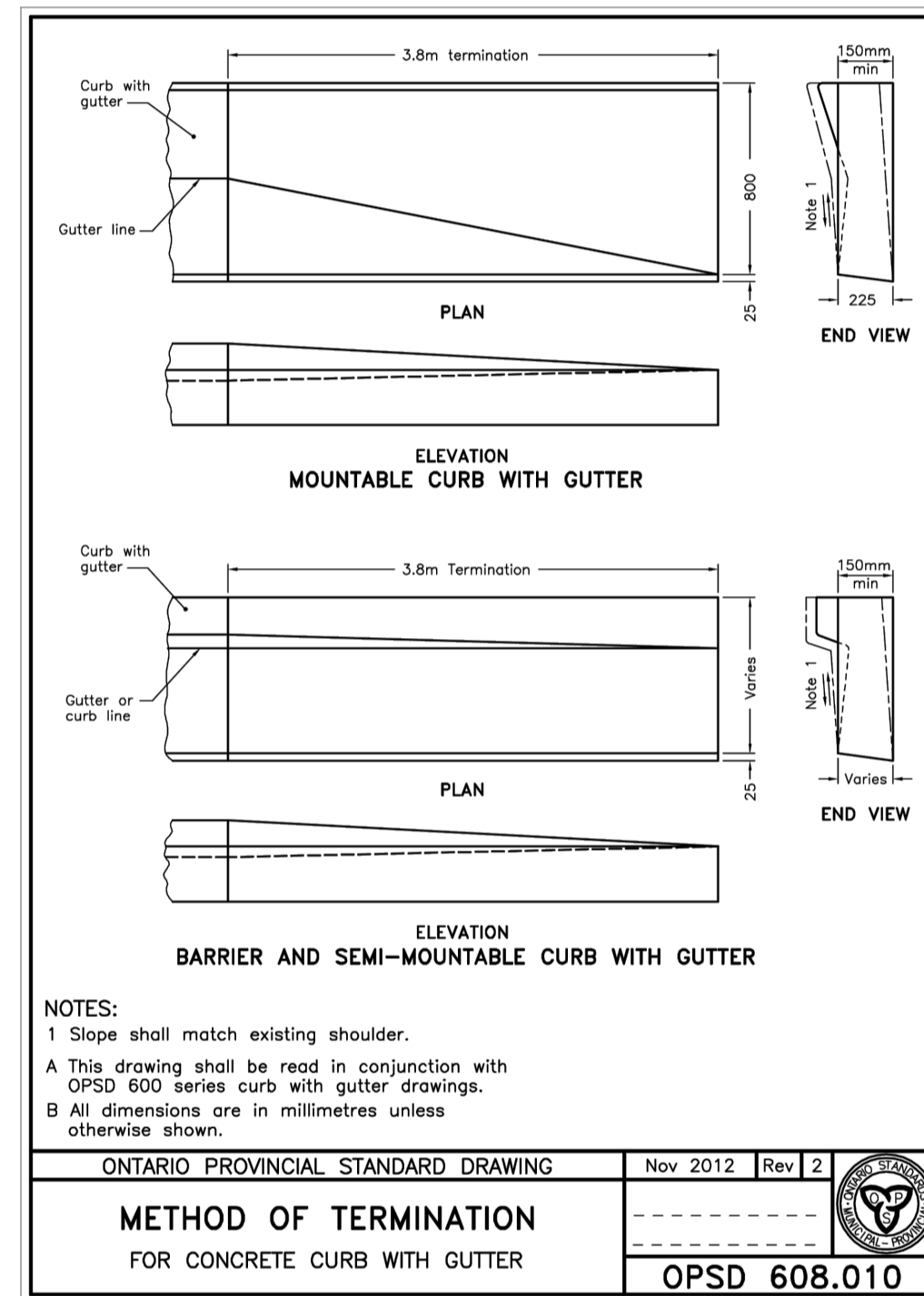
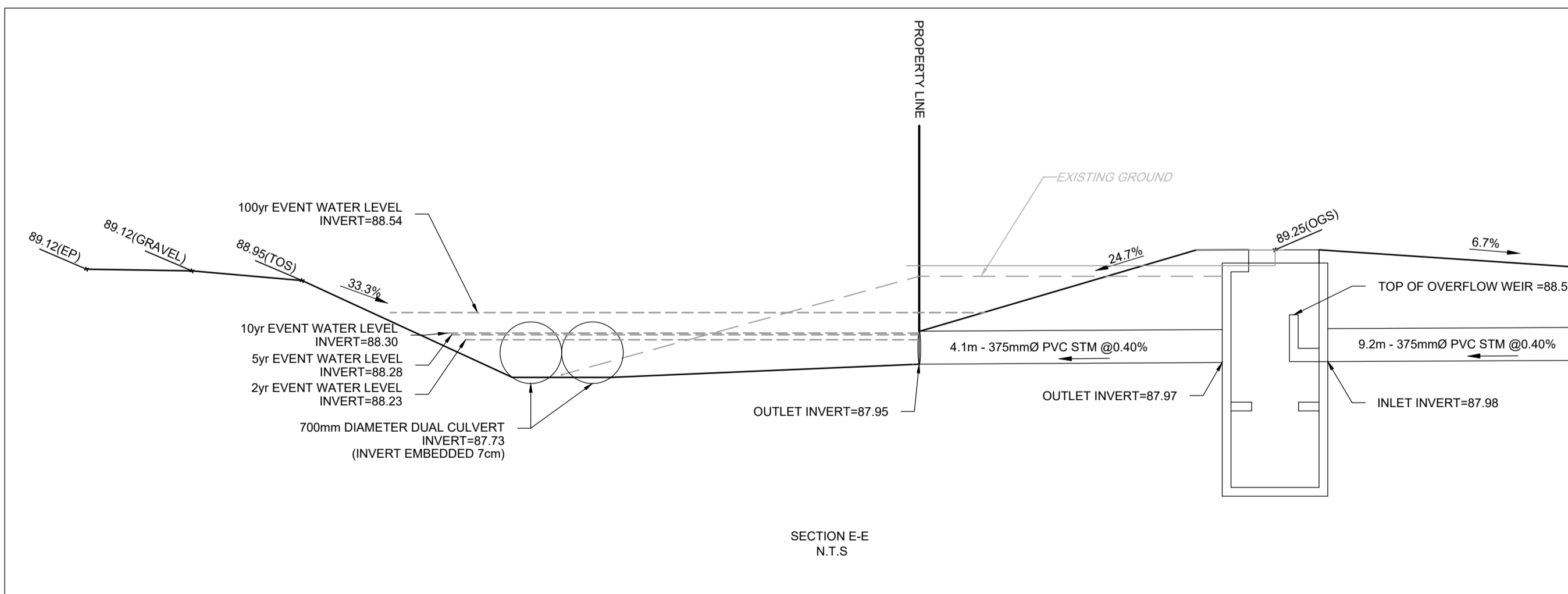
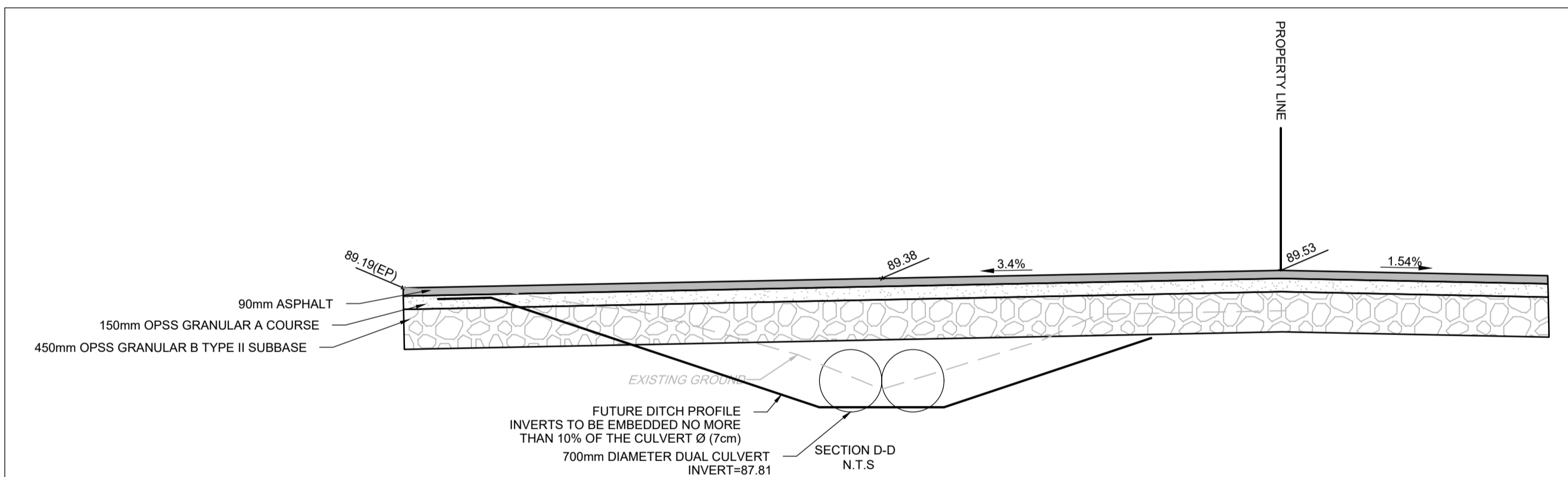
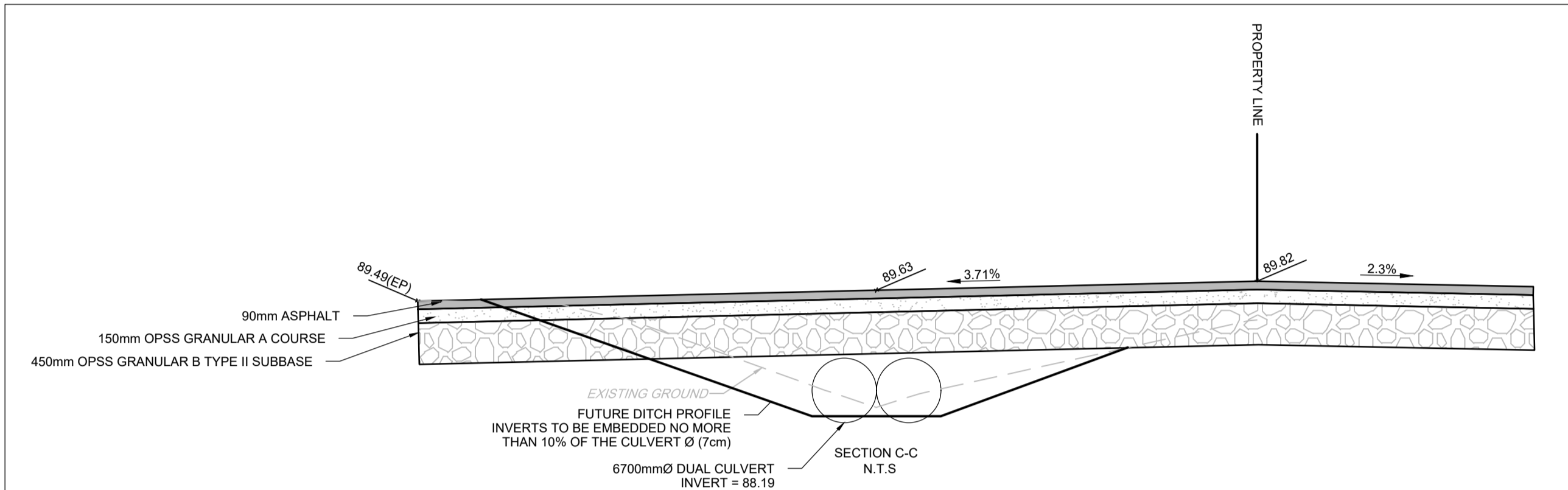
**PAVEMENT STRUCTURE:**

CAR ONLY PARKING AREA  
 50mm SUPERPAVE 12.5 SURFACE COURSE  
 150mm OPSS GRANULAR A BASE COURSE  
 300mm OPSS GRANULAR B TYPE II SUBBASE

ACCESS LANES  
 40mm SUPERPAVE 12.5 SURFACE COURSE  
 50mm SUPERPAVE 19.0 BINDER COURSE  
 150mm OPSS GRANULAR A BASE COURSE  
 450mm OPSS GRANULAR B TYPE II SUBBASE

**GRAVEL STRUCTURE:**

300mm OPSS GRANULAR A BASE COURSE  
 450mm OPSS GRANULAR B TYPE II SUBBASE



**NOTE:**  
 THE POSITION OF ALL POLE LINES, CONDUITS, WATERMANS, SEWERS AND OTHER UNDERGROUND AND OVERGROUND UTILITIES AND STRUCTURES IS NOT NECESSARILY SHOWN ON THE CONTRACT DRAWINGS, AND WHERE SHOWN, THE ACCURACY OF THE POSITION OF SUCH UTILITIES AND STRUCTURES IS NOT GUARANTEED. BEFORE STARTING WORK, DETERMINE THE EXACT LOCATION OF ALL SUCH UTILITIES AND STRUCTURES AND ASSUME ALL LIABILITY FOR DAMAGE TO THEM.

No.	REVISION	DATE	BY
4.	ISSUED TO ADDRESS CITY COMMENTS	MAY 04/2026	GJM
3.	ISSUED FOR SITE PLAN APPROVAL	MAR 17/2026	GJM
2.	ISSUED TO ADDRESS CITY COMMENTS	FEB 06/2026	GJM
1.	ISSUED TO ADDRESS CITY COMMENTS	SEP 23/2025	GJM

SCALE	DESIGN	CHECKED	DRAWN	APPROVED
AS SHOWN	RJG	ARM	RJG	ARM
AS SHOWN	RJG	ARM	RJG	GJM

**FOR REVIEW ONLY**

PROFESSIONAL ENGINEER  
 G.J. MacDONALD  
 May 04, 2026  
 PROVINCE OF ONTARIO

**NOVATECH**  
 Engineers, Planners & Landscape Architects  
 Suite 200, 240 Michael Cowpland Drive  
 Ottawa, Ontario, Canada K2M 1P6  
 Telephone: (613) 254-9643  
 Facsimile: (613) 254-5867  
 Website: www.novatech-eng.com

LOCATION  
 CITY OF OTTAWA  
 541 SOMME STREET

DRAWING NAME  
**NOTES AND DETAILS PLAN**

PROJECT No. 124111  
 REV # 4  
 DRAWING No. 124111-ND

M:\2024\124111\CAD\Civil\124111-ND.dwg, AND, May 11, 2026 - 11:23am, upgood

FILE # D07-12-25-0077 PLAN # 19398