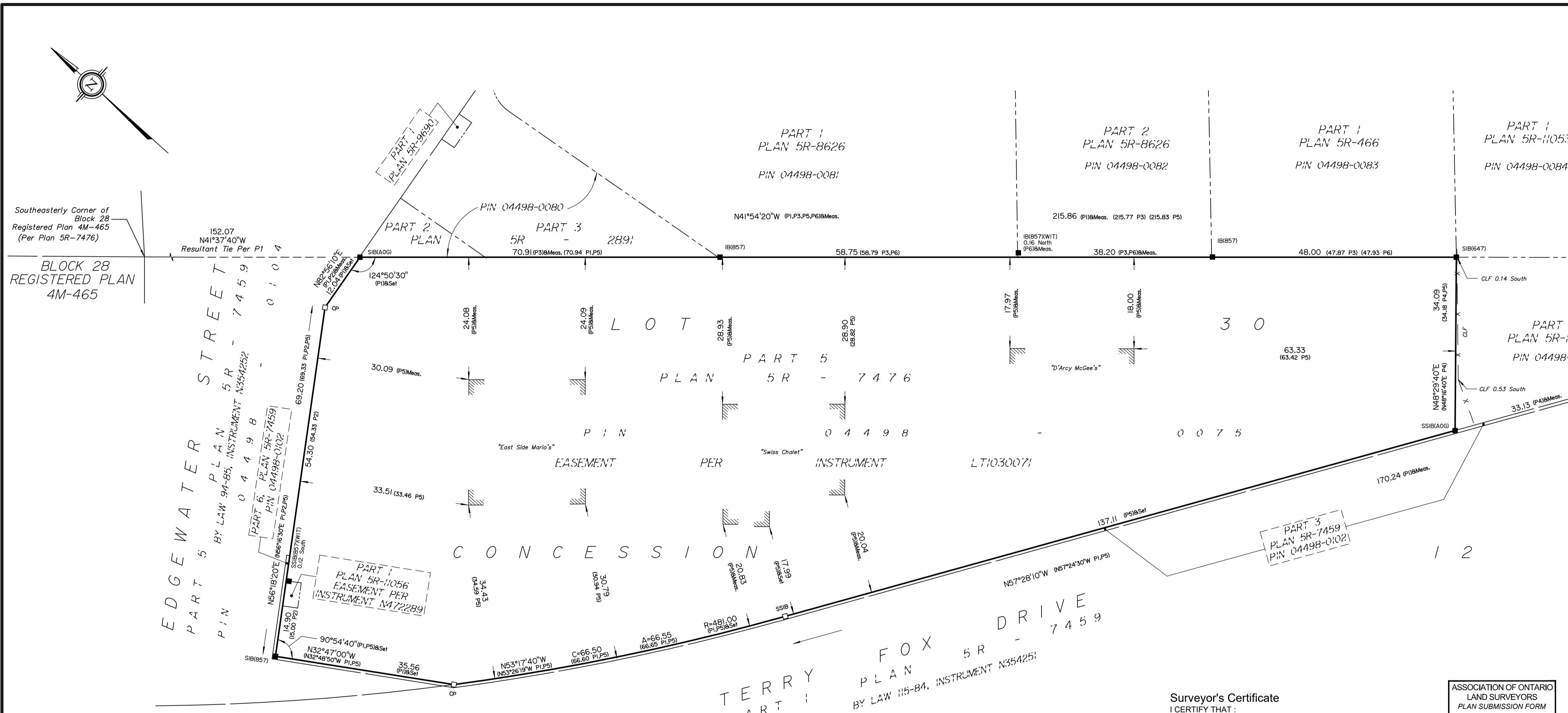


PLAN OF SURVEY OF
PART OF LOT 30
CONCESSION 12
 GEOGRAPHIC TOWNSHIP OF
GOULBOURN
 NOW IN THE
CITY OF OTTAWA
 Surveyed by Annis, O'Sullivan, Vollebakk Ltd.



Metric
 DISTANCES SHOWN ON THIS PLAN ARE IN METRES AND
 CAN BE CONVERTED TO FEET BY DIVIDING BY 0.3048



Southeasterly Corner of
 Block 28
 Registered Plan 4M-465
 (Per Plan 5R-7476)

BLOCK 28
 REGISTERED PLAN
 4M-465

- Notes & Legend**
- Denotes Survey Monument Planted
 - " Survey Monument Found
 - SIB " Standard Iron Bar
 - SSIB " Short Standard Iron Bar
 - IB " Iron Bar
 - CP " Concrete Pin
 - (WIT) " Witness
 - Acc. " Accepted
 - Meas. " Measured
 - (P1) " Plan 5R-7476
 - (P2) " Plan 5R-11056
 - (P3) " Plan 5R-8626
 - (P4) " Plan 5R-14062
 - (P5) " Plan by Annis, O'Sullivan, Vollebakk Ltd. dated July 14, 1997
 - (P6) " Plan by Fairhall, Moffatt & Woodland Ltd. dated November 3, 2016
 - CLF " Chain Link Fence

Distances shown on this plan are ground distances and can be converted to grid distances by multiplying by the combined scale factor of 0.999911.

Bearings are grid, derived from Can-Net 2016 Real Time Network GPS observations are referenced to the Central Meridian of MTM Zone 9 (76°30' West Longitude) NAD-83 (CSRS)(2010).

For comparison purposes, a rotation of 0°00'50" clockwise was applied to the bearings on P1, P2, P4 and P5 and a rotation of 0°30'20" counter clockwise was applied to the bearings on P3.

Surveyor's Certificate
 I CERTIFY THAT :
 1. This survey and plan are correct and in accordance with the Surveys Act, the Surveyors Act and the Land Titles Act and the regulations made under them.
 2. The survey was completed on the 6th day of October, 2025.

October 7, 2025
 Date

Emmett Ketchum
 Emmett Ketchum
 Ontario Land Surveyor

ASSOCIATION OF ONTARIO
 LAND SURVEYORS
 PLAN SUBMISSION FORM
V-117944

THIS PLAN IS NOT VALID UNLESS
 IT IS AN EMBOSSED ORIGINAL
 COPY ISSUED BY THE SURVEYOR
 In accordance with
 Regulation 1026, Section 29 (3).

© Annis, O'Sullivan, Vollebakk Ltd., 2025. THIS PLAN IS PROTECTED BY COPYRIGHT

ANNIS, O'SULLIVAN, VOLLEBEKK LTD.
 113 Prescott Street, Box 1340
 Kemptonville, Ontario K0G 1J0
 Phone: (613) 258-1717
 Email: Kemptonville@aovltd.com

Ontario
 Land Surveyors