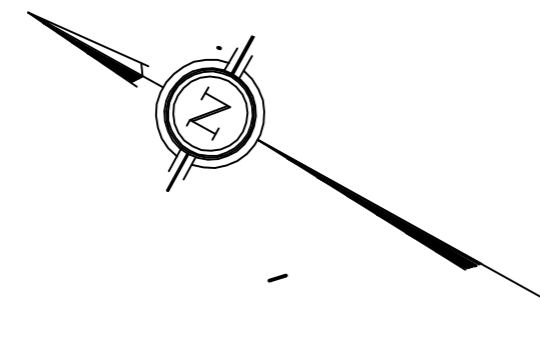
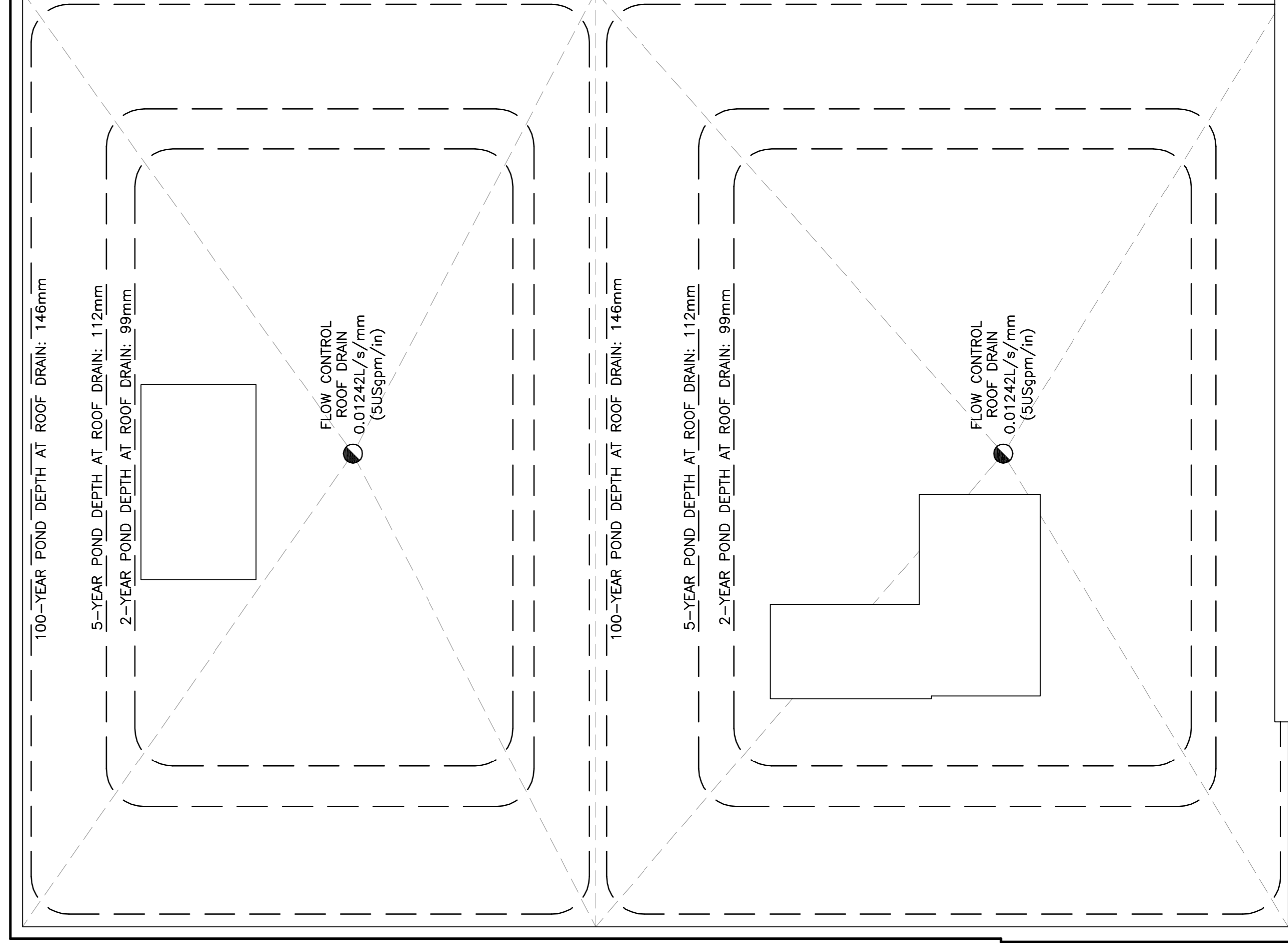


SEAN MOORE MCIP, RPP
 MANAGER, DEVELOPMENT REVIEW - WEST
 PLANNING, INFRASTRUCTURE & ECONOMIC
 DEVELOPMENT DEPARTMENT, CITY OF OTTAWA



INSTALL A MINIMUM OF 8 SCUPPERS EACH A MINIMUM 320mm WIDE. BOTTOM OF SCUPPERS SHALL BE 150mm ABOVE ROOF DRAINS. REFER TO ARCHITECTURAL FOR EXACT LOCATIONS AND DETAILS. ROOF SHALL BE DESIGNED TO CARRY THE LOAD OF WATER HAVING A 50mm DEPTH AT SCUPPERS (i.e., 200mm DEPTH AT ROOF DRAINS). REFER TO STRUCTURAL.

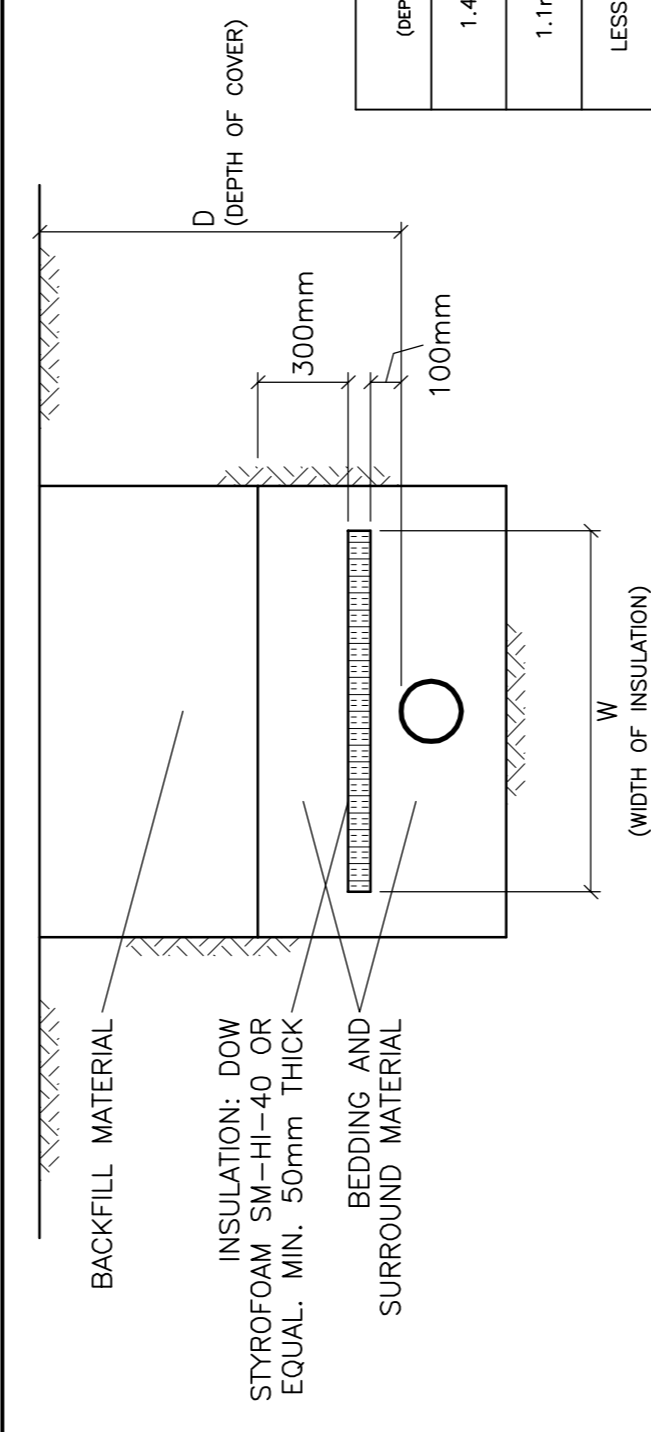


ROOF DRAINAGE PLAN

KEY PLAN



D (DEPTH OF COVER)	INSULATION THICKNESS	W (WIDTH OF INSULATION)
1.4m TO 2m	50mm	1.2m + DIAMETER OF PIPE
1.1m TO 1.4m	75mm	1.8m + DIAMETER OF PIPE
LESS THAN 1.1m	100mm	2.4m + DIAMETER OF PIPE



INSULATE SEWERS AND SEWER SERVICES AS INDICATED AND WHERE DEPTH OF COVER IS LESS THAN 2m. CENTER INSULATION OVER PIPE. STAGGER JOINTS BETWEEN SHEETS OF INSULATION.

INSULATION OF SEWERS & SEWER SERVICES IN SHALLOW TRENCHES
 N.T.S

WATER SERVICE PROFILE TABLE

STATION	DESCRIPTION	GRADE ELEVATION	TOP OF PIPE	DEPTH OF COVER	NOTES
0+00.0	CONNECTION TO 150mm MUNICIPAL WATERMAIN	±87.65	±85.30	±2.35	CONNECTION BY CITY EXCAVATION, BACKFILL & REINSTATEMENT BY CONTRACTOR
0+01.6	-	87.68	85.30	2.38	300 ST INV ±86.13 150 WM TOP 85.30
0+03.0	-	87.73	85.30	2.43	CROSSING GAS
0+06.4	VALVE & VALVE BOX	87.75	85.30	2.45	-
0+07.2	-	87.77	85.30	2.47	ENTRY TO BUILDING

150mm PVC PRESSURE CLASS 235 DR18

No.	DATE	REVISION
4	MAR 12-26	RE-ISSUED FOR APPROVAL
3	MAR 10-26	RE-ISSUED FOR APPROVAL
2	AUG 20-25	RE-ISSUED FOR APPROVAL
1	OCT 6-23	ISSUED FOR APPROVAL

D. B. GRAY ENGINEERING INC.
 Professional Engineers - Ontario
 700 Long Point Circle
 Ottawa, Ontario d.gray@dbgrayengineering.com

Project
PROPOSED 4-STORY RESIDENTIAL BUILDING
 193 NORRICE STREET
 OTTAWA, ONTARIO

Drawing Title
DETAILS

Engineer's Seal

 Drawn: D.B.G.
 H. Scale:
 V. Scale:
 Date: SEP 27-23
 Job No.: 23104
 Drawing No.: **C-4**
 of **6**
 #17254
 NOT VALID UNLESS SIGNED & DATED