

23058 193 Norice

RELEASE 2 - 66 % COORDINATION
2024-07-12

Version 2 A

NOT FOR CONSTRUCTION / PAS
POUR CONSTRUCTION

CONTENTS

Architecture

TABLE OF CONTENTS		
SHEET #	TITLE	Revision
A000	COVER PAGE	1.3
A002	LEGENDS	1.5
A005	PROJECT DATA	1.5
A010	FIRE SEPARATION PLANS	1.5
A020	EXTERIOR ASSEMBLIES	1.5
A021	INTERIOR PARTITIONS ASSEMBLIES	1.5
A050	SITE PLAN	1.5
A051	COMPLEX PLAN	1.5
A100.1	P1 PARKING LEVEL	1.6
A101	GROUND FLOOR	1.6
A102	FLOOR LEVEL 2	1.6
A103	FLOOR LEVEL 3	1.6
A104	FLOOR LEVEL 4	1.6
A110	ROOF PLAN	1.6
A200	ELEVATION - EAST & WEST	1.5
A202	ELEVATION - NORTH & SOUTH	1.5
A300	GENERAL CROSS SECTIONS	1.5



This document and all information herein is confidential and the intellectual property of Rossmann Architecture Inc. It is disclosed in confidence on terms that it will not be disclosed to any third party, used, sold, loaned, licensed, or reproduced in whole or in any part in any manner or form for manufacturing, tendering or for any other purpose without the written permission of Rossmann Architecture Inc. The copyright is retained by Rossmann Architecture Inc.

Ce document, ainsi que tous les renseignements contenus à l'intérieur, est la propriété de Rossmann Architecture Inc. Il est divulgué en confidence sous les termes qu'il ne sera pas divulgué à aucun tiers, utilisé, vendu, prêté, licencié ou reproduit en son entier ou en partie d'aucune manière pour la manufacture, soumission ou pour autres fins sans la permission écrite de Rossmann Architecture Inc. Le droit d'auteur est retenu par Rossmann Architecture Inc.

COMMON ABBREVIATIONS:

ABOVE FINISHED FLOOR	A.F.F.
ALTERNATE	AL.
ALUMINUM	ALUM.
AIR BARRIER	A.B.
APPROXIMATE	APPROX.
ARCHITECTURAL	ARCH.
BENCH MARK	B.M.
BORE HOLE	B.H.
BUILDING	BLDG.
CATCH BASIN	C.B.
CARD READER	C.R.
CENTER LINE	C.L.
COLUMN	COL.
COMMERCIAL	COMM.
COMPLETE WITH	COM.
CONCRETE	CONC.
CONSTRUCTION	CONST.
CONTROL JOINT	C.J.
COORDINATE	COORD.
DEPTH	DP.
DEPARTMENT	DEPT.
DIMENSION	DM.
DOUBLE HUNG	D.H.
DISHWASHER	D.W.
DOWN	DN.
DOOR OPERATOR	D.O.
DRAWING	DWG.
ELECTRICAL	ELEC.
EQUAL	EQ.
EQUIP.	EQUIP.
EXISTING	EXIST.
FINISHED FLOOR LEVEL	F.F.L.
FINISH	FN.
FIRE HOSE CABINET	F.H.C.
FIRE HYDRANT	F.H.
FLOOR	F.L.
FLOOR DRAIN	F.D.
FOOTING	FTG.
FOUNDATION	FDN.
GALVANIZED	GALV.
GAUGE	GA.
GLASS	GL.
GEORGIAN WIRE GLASS	G.W.G.
GEOTECHNICAL	GEOTECH.
GROSS FLOOR AREA	G.F.A.
GYP.	GYP.
HOLLOW METAL	H.M.
HOLLOW STRUCTURAL STEEL	H.S.S.
INSULATION	INSUL.
JOIST	JST.
LAMINATED	LAM.
MECHANICAL	MECH.
NOT APPLICABLE	N/A.
NOT IN CONTRACT	N.I.C.
NOT TO SCALE	N.T.S.
NO OR #	NO or #
ON CENTER	O.C.
OPEN WEB STEEL JOIST	O.W.S.J.
POLYETHYLENE	POLY.
POLYSTYRENE	PSTY.
PREFABRICATED	PREFAB.
QUANTITY	QTY.
REFERENCE	REF.
REINFORCED	REINF.
REQUIRED	REQD.
ROOF DRAIN	R.D.
ROOM	RM.
SCHEDULE	SCH.
SPECIFICATION	SPEC.
SQUARE(S)	SO.
STAINLESS STEEL	S.S.
STANDARD	STD.
STRUCTURE	STRUC.
SUSPENDED	SUSP.
TELEPHONE	TEL.
TEMPORARY	TEMP.
TEMPERED GLASS	T.G.
TOP & BOTTOM	T&B
TOP OF CONCRETE	T.O.C.
TOP OF FOOTING	T.O.F.
TOP OF SLAB	T.O.S.
TOP OF WALL	T.O.W.
TYPICAL	TYP.
UNDERSIDE	UN.
UNLESS NOTED	UN.
VAPOUR BARRIER	V.B.
VAPOUR PERMEABLE	V.P.
VERTICAL	VERT.
VESTIBULE	VEST.
VOLUME	VOL.
WASHROOM	W.R.

SITE CONTEXT

LEGEND	
SURFACES	
	GRASS
	RIVERSTONE
	CONCRETE PAVERS
	POURED CONCRETE
	ASPHALT PAVING
	PROPOSED NEW BUILDING
	EXISTING BUILDING TO REMAIN
	EXISTING BUILDING TO BE DEMOLISHED
LINE	
	PROPERTY LINE
	SETBACK LINE
	EXISTING FENCE
	NEW FENCE
	OVERHEAD WIRES
VEGETATION	
	TREE: EXISTING TO REMAIN
	TREE: EXISTING TO BE REMOVED
	TREE: NEW PROPOSED
	SHRUB: NEW PROPOSED
SYMBOLS	
	DIRECTIONAL ARROWS
	BUILDING ACCESS
	BUILDING EGRESS
	SIAMESE CONNECTION
	UTILITY POLE
	FIRE HYDRANT
	CATCH BASIN / MANHOLE
	DEPRESSED CURB
	LANDSCAPE LIGHT
	LIGHT POLE
	WALL MOUNTED LIGHT
	EXISTING GRADE ELEVATION
	PROPOSED GRADE ELEVATION
	LOT CORNERS
	BIKE PARKING H: HORIZONTAL 0.9M x 1.8M V: VERTICAL 0.5M x 1.5M S: STACKED 0.37M x 1.8M
	CAR PARKING R: RESIDENTIAL V: VISITOR
	BF PARKING (TYPE A) R: RESIDENTIAL V: VISITOR
	BF PARKING (TYPE B) R: RESIDENTIAL V: VISITOR

EXTERIOR FINISHES

MASONRY	
	Architectural Block 1 - 100x200x400mm Permacore: Block Noble, finish: Polished Colour: Silver mother-of-pearl
	Architectural Block 1 - 100x200x400mm Permacore: Block Noble, finish: Polished Colour: Silver mother-of-pearl
HOLLOW MORTAR JOINT	
EXPOSURE GASKET: Sealant	
MORTAR	
	Betomix Plus Architectural Block Mortar, Colour: 15139 S30 - Silver Gray
METAL COATING	
	Solar Collector Wall Corrugated 1/4, Black (QC 8262)
	Corrugated Ideal Roofing: Corrugated Black (QC 8262)
	Metal siding Ideal Roofing: Urban Accent 8" Charcoal (QC 8306)
	Aluminum Panel Alutech Architectural: "Maratech Red" by Duranar (UC10667XL/3XMR86899P)
	Alutech Aluminum Panel Architectural: Natural Anodized
	Aluminum Panel Alutech Architectural: Spike Pattern 3.2mm anti-slip aluminum diamond core
Shutters See Mechanics Colour: Black (QC 8262)	
FLASHING	
	METAL FLASHING 1 Ideal Roofing: Black Pre-painted Steel (QC 8262)
	ALUMINUM FLASHING 2 Natural Anodized
	METAL FLASHING 3 Ideal Roofing: Charcoal Pre-painted Steel (QC 8306)
	METAL FLASHING 4 Ideal Roofing: Red Pre-painted Steel (QC 8250)
	METAL FLASHING 5 Ideal Roofing: White Pre-painted Steel (QC 8317)
	MUR SIDAULT
	Thermos Light
	TYMPANIA PANEL White
	OPENING SHUTTER Type "Phantom"
	PRESS COVER - Natural Anodized Vertical Mullions, 25mm thick
	PRESS COVER - Horizontal mullions Structural sealant
NOTES	

MOLDING

	ARROW Indicates the visible side of the molding
	1 Window sides
	2 Masonry window
	3 Convex corner
	4 Concave corner
	5 Convex corner
NOTE - MOLDINGS	
NOTE 1 Unless otherwise specified, all moldings are 24 gauge pre-painted steel. Other moldings may be specified in the cuts and details of this project.	

FLOOR FINISHES

COATINGS	
	COATING ON CONCRETE 1: Sierra - Epoxy Filler SPE-2 Color
	COATING ON CONCRETE 2: Epoxy flooring with non-slip aggregates (quote section 099633)
CERAMIC	
	Ceramic Tiles 1: TILE BRAND - COLOR & SERIES #PRODUCT CODE - HEIGHTmm X WIDTH mm
	Ceramic Tiles 2: TILE BRAND - COLOR & SERIES #PRODUCT CODE - HEIGHTmm X WIDTH mm
	Ceramic Tiles 3: TILE BRAND - COLOR & SERIES #PRODUCT CODE - HEIGHTmm X WIDTH mm
	Ceramic Tiles 4: TILE BRAND - COLOR & SERIES #PRODUCT CODE - HEIGHTmm X WIDTH mm
WALL CERAMIC	
	Wall Ceramic Tiles 1: TILE BRAND - COLOR & SERIES #PRODUCT CODE - HEIGHTmm X WIDTH mm
	Wall Ceramic Tiles 2: TILE BRAND - COLOR & SERIES #PRODUCT CODE - HEIGHTmm X WIDTH mm
	Wall Ceramic Tiles 3: TILE BRAND - COLOR & SERIES #PRODUCT CODE - HEIGHTmm X WIDTH mm
	Wall Ceramic Tiles 4: TILE BRAND - COLOR & SERIES #PRODUCT CODE - HEIGHTmm X WIDTH mm
GALVANIZED STEEL	
	GRATINGS: (Drying Tower)
RUBBER	
	MULTI-PURPOSE RUBBER TILE: #PRODUCT CODE - WIDTH mm X HEIGHT mm (Rubber baseboard in this room)
BASEBOARD	
	CERAMIC PLINTH 1: With chosen, dimensions: WIDTH mm x HEIGHT mm
	CERAMIC PLINTH 2: With chosen, dimensions: WIDTH mm x HEIGHT mm
	CERAMIC SKIRTING 3: #PRODUCT CODE - WIDTH mm X HEIGHTmm on a Height of 4"
	VINYL SKIRTING 4: JOHNSONITE RWDC-63 Burnt Umber B
GROUT	
	CERAMIC GROUT FLEXITILE LTD Colour: 688 Pewter Gray
	COULIS POUR CÉRAMIQUE: FLEXITILE LTD. Couleur 651 Snow White
	COULIS POUR CÉRAMIQUE: FLEXITILE LTD. Couleur 688 Pewter Gray
NOTES	

ROOF

NUMBERING	
	BOWL Identification number
	DRAIN No. d'identification
SLOPE	
	SLOPE ARROW Type and Direction
	ROOF POOL Slope per structure
	ROOF POOL 2% slope insulation
	PITCHED ROOF Pitch per structure
DRAIN	
	Drain New
VENT	
	Vent
MECHANICAL EQUIPMENT	
	ROOF UNIT New
	GOOSENECK New
	EVACUATOR New
	CABANON SHUTTER New

CEILING FINISH

CEILING TILES	
	ACOUSTIC TILES 1 Armstrong, Fire Rated - # 1755 WH (White) 610 x 1220mm OR CGC Radar #2310 Coordinate wells with electricity
	ACOUSTIC TILES 2 Armstrong, Perforated Ceranguard - #607 WH (White) 610 x 1220mm OR CGC Radar Ceramic #56645 Coordinate wells with electricity
GYPSON	
	CERAMIC TILES 1: CERA GRES - Aniga porcelain series # E - 05 (300 mm x 300 mm) Color Gray
COATINGS	
	APPARENT STRUCTURE 1 Painting (SP-2 system) color
	FIRE RETARDANT PROTECTION On visible structure
	FIRE RETARDANT PROTECTION On structure with suspended ceiling (Doors, beams and bridging)
	FIRE RETARDANT PROTECTION On structure with suspended ceiling (Doors, beams and bridging)
UNDER FACE	
	CORRUGATED Ideal Roofing: Corrugated Black (QC 8262)
	ALUMINUM PANEL Alutech Architectural: "Maratech Red" by Duranar (UC10667XL/3XMR86899P)
	PARÉMENT MÉTALLIQUE VIO WEST Ideal Roofing: Accent Urban 8" Fusain (QC 8306)
	PANNEAU D'ALUMINIUM Alutech Architectural: Anodise Naturel
NOTES	

GENERAL ANNOTATION

GRID MARKER	
Grid name	
Grid line	
ELEVATION MARKER	
Level line	
Elevation (from ground floor)	
Elevation (mm from sea level)	
Level name	
ELEVATION MARKER	
View direction	
Drawing reference number	
Sheet reference number	
SECTION MARKER	
Drawing reference number	
Sheet reference number	
View direction and extents	
CALLOUT MARKER	
Drawing Reference Number	
Sheet Reference Number	
View extents	

FURNITURE FINISHES AND BATHROOM PARTITIONS

PLASTIC LAMINATE	
	Plastic Laminate 1: (Window Board) ARBORITE P-623MX Brushed Aluminum
	Plastic laminate 2: (Countertop) WILSONART 1861K-55 Tuscan Limestone
	Plastic laminate 3: (w.c. counter) ARBORITE P-334 BC Sahara Storm
	Plastic Laminate 4: (Counter Dispatchier) WILSONART 1595-K Black
MELAMINE	
	Melamine 1: (Door, drawer, exposed cabinet and interior shelf) BRAND & FINISH
	Melamine 2: (Door, drawer, exposed cabinet and interior shelf) BRAND & FINISH
	Melamine 3: (Bottoms of hidden pedestals and frame of drawers) BRAND & FINISH
	Melamine 4: Door, drawer, exposed cabinet, not apparent and shelf in - BRAND & FINISH
	Melamine 5: Door, drawer - divider BRAND & FINISH
TOILET PARTITIONS	
	Toilet partition 1: Solid laminate finished: WILSONART D495K-18 Coffee Bean
NOTE ON FURNITURE FINISHES	
NOTE M1:	
NOTE M2:	
NOTE M3:	
NOTE M4:	
NOTE M5:	
NOTE M6:	

PAINT FINISHES

WALLS	
	Paint 1: (Main color except offices) BRAND, SERIES & COLOR
	Painting 2: (Main color rooms 06, 08, 09, 12 and 16) BRAND, SERIES & COLOR
	Paint 3: (Accent color) BRAND, SERIES & COLOR
	Paint 4: (Local accent colors 06, 08, 09, 12 and 16) BRAND, SERIES & COLOR
	Paint 5: (Garage and training accent color) BRAND, SERIES & COLOR
	Paint 6: (Accent color) BRAND, SERIES & COLOR
CEILING AND BOXES	
	Paint 7: (Apparent structure color) BRAND, SERIES & COLOR
	Paint 8: (Gypsum Color) BRAND, SERIES & COLOR
	Paint 9: (Gypsum color) BRAND, SERIES & COLOR
FRAMES, DOORS AND WINDOWS	
	Paint 10: (Interior door frame color) BRAND, SERIES & COLOR
	Painting 11: (Steel interior door color) BRAND, SERIES & COLOR
	Painting 12: (Frame and exterior door color) BRAND, SERIES & COLOR
	Painting 13: Louver Color) BRAND, SERIES & COLOR
FLOOR PAINT	
	Painting 14: (Garage floor color) Duochem - BRAND, SERIES & COLOR
	Painting 15: (Garage floor line color) Duochem - BRAND, SERIES & COLOR
	Paint 16: (Service room floor color) Sierra (Liquid Flooring) BRAND, SERIES & COLOR
AUTRES	
	Painting 17: (Bollard interior and exterior) BRAND, SERIES & COLOR
	Painting 18: (Metalwork - stairs) BRAND, SERIES & COLOR
	Painting 19: (Steel counter) BRAND, SERIES & COLOR
NOTES - PEINTURE	
P1: Unless otherwise indicated and except for accent colors, paint all elements according to their assigned color number in the paint and varnish color list.	
P2: Unless otherwise indicated, all walls will be colored except in the following rooms: 06, 08, 09, 12 and 16.	
P3: Unless otherwise indicated, all walls in rooms 06, 08, 09, 12 and 16 will be colored.	
P4: Unless otherwise specified, all exterior steel frames and doors will be color painted.	



88 Saint-Joseph Boulevard, Gatineau QC J8Y 3W5
Tel : 819-600-1555

This document and all information herein is confidential and the
intellectual property of Rossmann Architecture Inc. It is disclosed in
confidence on terms that it will not be disclosed to any third party,
used, sold, loaned, licensed, or reproduced in whole or in any part
in any manner or form for manufacturing, tending or for any
other purpose without the written permission of Rossmann
Architecture Inc. The copyright is retained by Rossmann
Architecture Inc.

Ce document, ainsi que tous renseignements contenus à l'intérieur,
est la propriété de Rossmann Architecture Inc. Il est divulgué en
confiance sous les termes qu'il ne sera pas divulgué à aucun
tiers partie, utilisé, vendu, prêté, licencié ou reproduit en tout
entier ou en partie d'aucune manière pour la manufacture,
distribution ou pour autres fins sans la permission écrite de
Rossmann Architecture Inc. Le droit d'auteur est réservé par
Rossmann Architecture Inc.

PROJECT TEAM / ÉQUIPE DU PROJET :

JAMES B. LENNOX & ASSOCIATES INC.	
LANDSCAPE ARCHITECTS	
3332 CANTON AVENUE, OTTAWA, ONTARIO K2M 4S4	Tel: (613) 723-1188
3332 CANTON AVENUE, OTTAWA, ONTARIO K2M 4S4	Fax: (613) 723-1188
D.B. GRAY ENGINEERING INC.	
700 LONG POINT CIRCLE, OTTAWA, ONTARIO K2A 1K3	Tel: (613) 425-8044
700 LONG POINT CIRCLE, OTTAWA, ONTARIO K2A 1K3	Fax: (613) 425-8044
LCA	
Landscape Architecture & Planning	
15 RUE DE VALCOURT, UNITÉ 6, GATINEAU, QUÉBEC QC J8T 9G1	Tel: (819) 243-4474
15 RUE DE VALCOURT, UNITÉ 6, GATINEAU, QUÉBEC QC J8T 9G1	Fax: (819) 243-4474

KEY PLAN / PLAN CLÉ :



CLIENT :



1.5	ISSUED FOR 88 %	24-07-12
1.3	ISSUED FOR SPA	24-02-15
1.1	ISSUED FOR 33%	23-07-19
revision	description	date

PROJECT NAME / NOM DU PROJET :

193 Notice

DRAWING NAME / NOM DU DESSIN :

NOT FOR CONSTRUCTION / PAS POUR CONSTRUCTION

This document and all information herein is confidential and the intellectual property of Rossmann Architecture Inc. It is disclosed in confidence on terms that it will not be disclosed to any third party, used, sold, loaned, licensed, or reproduced in whole or in any part in any manner or form for manufacturing, tending or for any other purpose without the written permission of Rossmann Architecture Inc. The copyright is retained by Rossmann Architecture Inc.

Ce document, ainsi que tous les renseignements qu'il contient, est la propriété de Rossmann Architecture Inc. Il est divulgué en confiance sous les termes qu'il ne sera pas divulgué à aucun tiers, utilisé, vendu, prêté, licencié ou reproduit en tout ou en partie d'aucune manière pour la manufacture, la livraison ou pour autres fins sans la permission écrite de Rossmann Architecture Inc. Le droit d'auteur est réservé par Rossmann Architecture Inc.

PROJECT TEAM / ÉQUIPE DU PROJET :

JAMES B. LENNOX & ASSOCIATES INC.
LANDSCAPE ARCHITECTS

3332 CARLING AVE. OTTAWA, ONTARIO K2H 5A8 Tel: (613) 723-0168 Fax: (613) 343-3942

D.B. GRAY ENGINEERING INC.

700 LONG POINT CIRCL. OTTAWA, ONTARIO K2A1T4 Tel: (613) 425-8044 Fax: (613) 425-8044

ODI
Ingenieur-architecte

635, BOULEVARD DE LA GAYETTE, GATINEAU, QUÉBEC QC J8T 8G1 Tel: (819) 243-4474 Fax: (819) 243-4474

LCA
Landscape Architect & Architect

15 RUE DE VALCOURT, QUÉBEC, QUÉBEC Q1M 1R1 Tel: (514) 243-4474 Fax: (514) 243-4474

ONTARIO BUILDING CODE (OBC) CONFORMITY MATRIX PARTS 3 AND 9										OBC REFERENCES	
Project Description	New			Part 3: NO			Part 9: NO			Part 3: NO	Part 9: NO
	Addition	Alteration	Change of use	YES	NO	NO	NO	NO	NO		
MAJOR OCCUPANCY(S)										3.1.1.1(1)	9.10.2
Building Area (m2)	Existing	0.00	New	868.51	Total	868.51	1.1.3.2	1.1.3.2	1.1.3.2	1.1.3.2	
Gross Area (m2)	Existing	0.00	New	3478.04	Total	3478.04	1.1.3.2	1.1.3.2	1.1.3.2	1.1.3.2	
Number of Storeys	Above grade	4	Below grade	0			3.2.1.1 et 1.1.3.2	2.1.1.3	2.1.1.3	2.1.1.3	
Height of Building (m)		11.2						2.1.1.3	2.1.1.3	2.1.1.3	
Number of Streets/Access Routes		1					3.2.2.10.6, 3.2.5.3				
Building Classification		C					3.2.2.20-83	9.10.4			
Sprinkler System Proposed		Entire building					3.2.2.20-83, 3.2.1.5, 3.2.2.17	9.10.8			
Standpipe required		YES					3.2.9				
Fire Alarm required		YES					3.2.4	9.10.7.2			
Water Service/Supply is Adequate		YES					3.2.5.7, 3.2.5.8				
High Building		NO					3.2.6				
Permitted Construction		Incumbible					3.2.2.20-83	9.10.6			
Actual Construction		Incumbible									
Mezzanine(s) Area (m2)							3.2.1.1 (3)-(8)	9.10.4.1			
Occupant load based on:		m2/person					3.1.1.6	9.9.1.3			
Basement:	Occupancy:		Load:	29	Persons						
Level 1:	Occupancy:	2 person per sleeping room	Load:	66	Persons						
Level 2:	Occupancy:	2 person per sleeping room	Load:	66	Persons						
Level 3:	Occupancy:	2 person per sleeping room	Load:	66	Persons						
Level 4:	Occupancy:	2 person per sleeping room	Load:	66	Persons						
Level 5:	Occupancy:		Load:		Persons						
Barrier-free Design		YES	Explain:				3.8	9.5.2			
Hazardous Substances		NO					3.1.1.2(1) et 3.1.1.3(1)	9.10.1.3			
REQUIRED FIRE RESISTANCE RATING (FRR)										3.2.2.20-83 et 3.2.1.4	9.10.8, 9.10.9
Horizontal Assemblies FRR (Hours)											
Floors:	Hours:	2									
Roof:	Hours:	2									
Mezzanine:	Hours:	2									
FRR of Supporting Members											
Floors:	Hours:	2									
Roof:	Hours:	2									
Mezzanine:	Hours:	2									
SPATIAL SEPARATION - CONSTRUCTION OF EXTERIOR WALLS										3.2.3	9.10.14
Wall	Area of EBF (m ²)	L.D. (m)	L/H or H/L	Permitted Max. % of Openings	Proposed % of Openings	FRR	Listed Design or Description	Non-comb. Cladding	Non-comb. Constr.		
North	284.03	7.5	<Select>	74%	74%	45 min.	Incumbible	Incumbible	Incumbible		
South	265.49	12.5	<Select>	100%	100%	N/A	Incumbible	Incumbible	Incumbible		
East	383.25	3	<Select>	63%	63%	45 min.	Incumbible	Incumbible	Incumbible		
West	383.25	3	<Select>	54.85%	54.85%	45 min.	Incumbible	Incumbible	Incumbible		
EXIT REQUIREMENTS										3.4.2.1, 3.4.3.2B, 3.4.6.16	
Level	Minimum number of exits required	Minimum corridor width	Minimum ramp width	Minimum door opening width	Maximum distance of travel	Maximum exit distance	Public requirement				
1	2	1100mm	1100mm	900mm	850mm	45m	09m	NO			
2	2	1100mm	1100mm	900mm	850mm	45m	09m	YES			
3	2	1100mm	1100mm	900mm	850mm	45m	09m	NO			
4	2	1100mm	1100mm	900mm	850mm	45m	09m	NO			

ONTARIO BUILDING CODE (OBC) CONFORMITY MATRIX PARTS 3 AND 9										OBC REFERENCES	
Project Description	New			Part 3: NO			Part 9: NO			Part 3: NO	Part 9: NO
	Addition	Alteration	Change of use	YES	NO	NO	NO	NO	NO		
MAJOR OCCUPANCY(S)										3.1.1.1(1)	9.10.2
Building Area (m2)	Existing	0.00	New	1304.00	Total	1304.00	1.1.3.2	1.1.3.2	1.1.3.2	1.1.3.2	
Gross Area (m2)	Existing	0.00	New	1304.00	Total	1304.00	1.1.3.2	1.1.3.2	1.1.3.2	1.1.3.2	
Number of Storeys	Above grade	4	Below grade	0			3.2.1.1 et 1.1.3.2	2.1.1.3	2.1.1.3	2.1.1.3	
Height of Building (m)		11.2						2.1.1.3	2.1.1.3	2.1.1.3	
Number of Streets/Access Routes		1					3.2.2.10.6, 3.2.5.3				
Building Classification		F3					3.2.2.20-83	9.10.4			
Sprinkler System Proposed		Entire building					3.2.2.20-83, 3.2.1.5, 3.2.2.17	9.10.8			
Standpipe required		YES					3.2.9				
Fire Alarm required		YES					3.2.4	9.10.7.2			
Water Service/Supply is Adequate		YES					3.2.5.7, 3.2.5.8				
High Building		NO					3.2.6				
Permitted Construction		Incumbible					3.2.2.20-83	9.10.6			
Actual Construction		Incumbible									
Mezzanine(s) Area (m2)							3.2.1.1 (3)-(8)	9.10.4.1			
Occupant load based on:		m2/person					3.1.1.6	9.9.1.3			
Basement:	Occupancy:		Load:	29	Persons						
Level 1:	Occupancy:	2 person per sleeping room	Load:	66	Persons						
Level 2:	Occupancy:	2 person per sleeping room	Load:	66	Persons						
Level 3:	Occupancy:	2 person per sleeping room	Load:	66	Persons						
Level 4:	Occupancy:	2 person per sleeping room	Load:	66	Persons						
Level 5:	Occupancy:		Load:		Persons						
Barrier-free Design		YES	Explain:				3.8	9.5.2			
Hazardous Substances		NO					3.1.1.2(1) et 3.1.1.3(1)	9.10.1.3			
REQUIRED FIRE RESISTANCE RATING (FRR)										3.2.2.20-83 et 3.2.1.4	9.10.8, 9.10.9
Horizontal Assemblies FRR (Hours)											
Floors:	Hours:	2									
Roof:	Hours:	2									
Mezzanine:	Hours:	2									
FRR of Supporting Members											
Floors:	Hours:	2									
Roof:	Hours:	2									
Mezzanine:	Hours:	2									
SPATIAL SEPARATION - CONSTRUCTION OF EXTERIOR WALLS										3.2.3	9.10.14
Wall	Area of EBF (m ²)	L.D. (m)	L/H or H/L	Permitted Max. % of Openings	Proposed % of Openings	FRR	Listed Design or Description	Non-comb. Cladding	Non-comb. Constr.		
North	284.03	7.5	<Select>	74%	74%	45 min.	Incumbible	Incumbible	Incumbible		
South	265.49	12.5	<Select>	100%	100%	N/A	Incumbible	Incumbible	Incumbible		
East	383.25	3	<Select>	63%	63%	45 min.	Incumbible	Incumbible	Incumbible		
West	383.25	3	<Select>	54.85%	54.85%	45 min.	Incumbible	Incumbible	Incumbible		
EXIT REQUIREMENTS										3.4.2.1, 3.4.3.2B, 3.4.6.16	
Level	Minimum number of exits required	Minimum corridor width	Minimum ramp width	Minimum door opening width	Maximum distance of travel	Maximum exit distance	Public requirement				
B1	2	1100mm	1100mm	900mm	850mm	45m	15m	NO			

KEY PLAN / PLAN CLÉ :



CLIENT :



revision	description	date
1.5	ISSUED FOR 66 %	24-07-12
1.3	ISSUED FOR SPA	24-02-15
1.1	ISSUED FOR 33%	23-07-19
1.0	ISSUED FOR FEASIBILITY	23-06-02

PROJECT NAME / NOM DU PROJET :

193 Notice

193 Notice St. Nepean, ON K2G 2Y5

DRAWING NAME / NOM DU DESSIN :

PROJECT DATA

DRAWING INFORMATION / INFORMATION DU DESSIN :

PROJECT NO. / NO. DE PROJET : **23058**

DATE : **2018-07-12**

DRAWN BY / DESSINÉ PAR : **SB**

REVIEWED BY / VÉRIFIÉ PAR : **LG**

SCALE / ÉCHELLE :

PROJECT PHASE / PHASE DU PROJET : **2**

DWG NO. / NO. DESSIN :

A005

REVISION NO. / NO. DE RÉVISION : **1.5**

NOT FOR CONSTRUCTION / PAS POUR CONSTRUCTION

This document and all information herein is confidential and the intellectual property of Rossmann Architecture Inc. It is disclosed in confidence on terms that it will not be disclosed to any third party, used, sold, loaned, licensed, or reproduced in whole or in any part in any manner or form for manufacturing, tendering or for any other purpose without the written permission of Rossmann Architecture Inc. The copyright is retained by Rossmann Architecture Inc.

Ce document, ainsi que toutes informations contenues à l'intérieur, est la propriété de Rossmann Architecture Inc. Il est divulgué en confiance sous les termes qu'il ne sera pas divulgué à aucun tiers, utilisé, vendu, prêté, licencié ou reproduit en tout ou en partie d'aucune manière pour la manufacture, soumission ou pour autres fins sans la permission écrite de Rossmann Architecture Inc. Le droit d'auteur est réservé par Rossmann Architecture Inc.

PROJECT TEAM / ÉQUIPE DU PROJET :

JAMES B. LENNOX & ASSOCIATES INC.
LANDSCAPE ARCHITECTS
3332 CARLING AVE. OTTAWA, ONTARIO K2H 3A5 Tel: (613) 729-1169 Fax: (613) 729-1169

D.B. GRAY ENGINEERING INC.
1701 LONG POINT CIRCL. OTTAWA, ONTARIO K2A1T3 Tel: (613) 425-8044 Fax: (613) 425-8044

LCA
Landscape Architecture & Associates
15 RUE DE VALCOURT, UNITÉ 6 GATINEAU, QUÉBEC QC J8Y 8Y1 Tel: (819) 243-4474 Fax: (819) 243-4474

FIRE RATING LEGEND

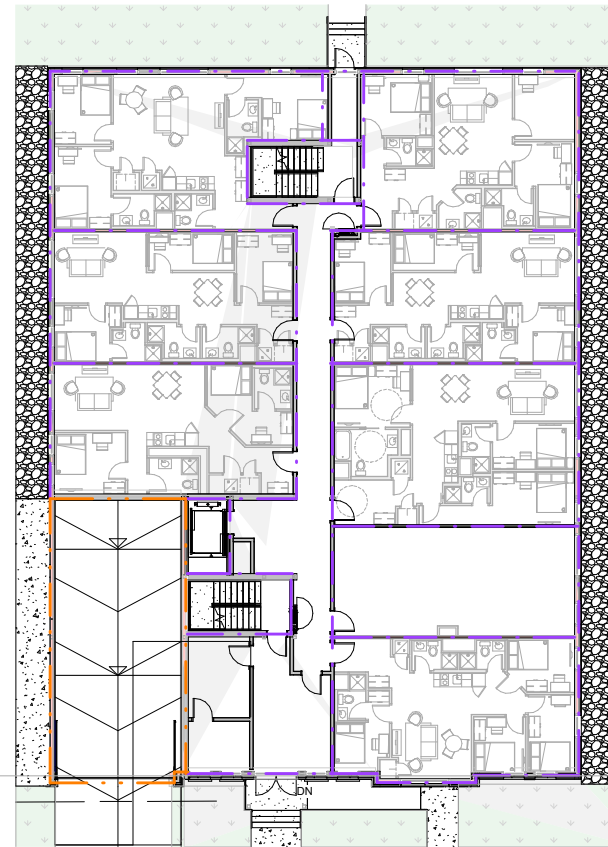
- 0 HR
- 45 MIN
- 1 HR
- 1.5 HR
- 2 HR
- 3 HR
- 4 HR

ALL STRUCTURAL ELEMENTS SUPPORTING A FLOOR MUST BE PROTECTED BY A PROTECTION APPLIED FLAME RETARDANT HAVING THE SAME DEGREE OF FIRE RESISTANCE AS THE FLOOR IT SUPPORTS. THIS INCLUDES THE COLUMNS, BEAMS AND STEEL BRIDGING UNLESS INDICATED OTHERWISE. THE CONTRACTOR IS RESPONSIBLE FOR VERIFYING THE STRUCTURAL ENGINEER'S DOCUMENTS AND ACCOUNTING FOR THE VARIOUS STRUCTURAL ELEMENTS.

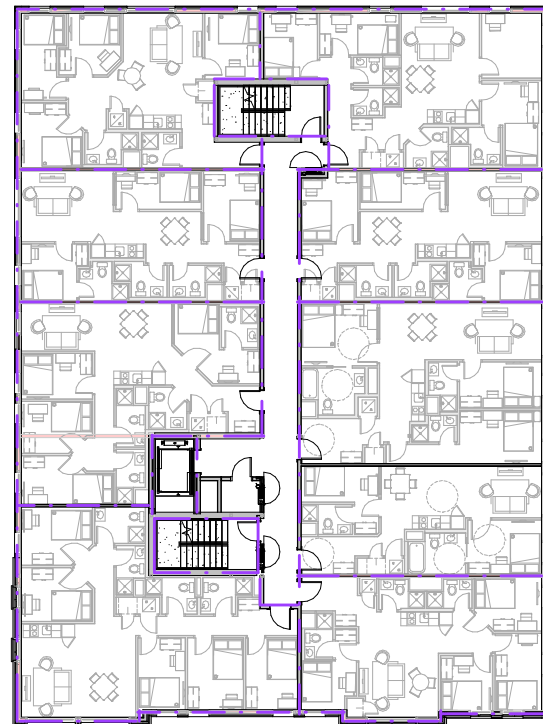
COLUMN PROTECTION (SEE TYPE DETAILS)

- 1 HR (1) FIRE RETARDANT GYPSUM PANEL ON FURRING OR METAL STUDS
- 1.5 HR (2) FIRE RETARDANT GYPSUM PANEL ON FURRING OR METAL STUDS

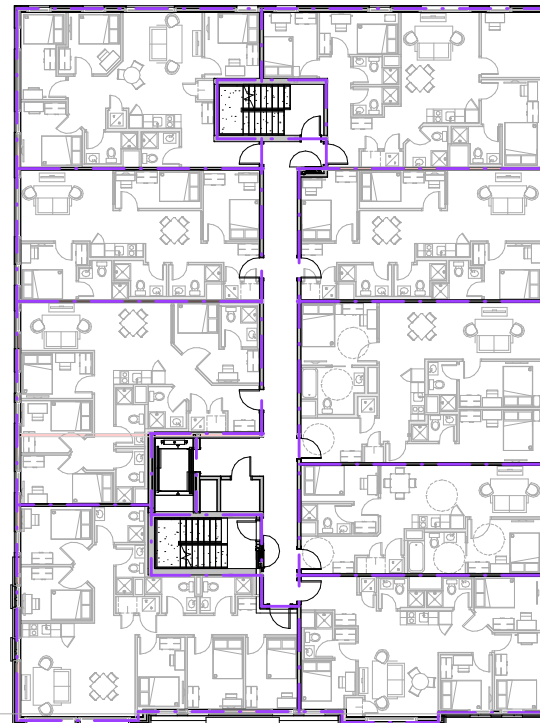
* ALL THE DETAILS SHALL BE ACCORDING TO THE CERTIFIED "ULC" ASSEMBLY



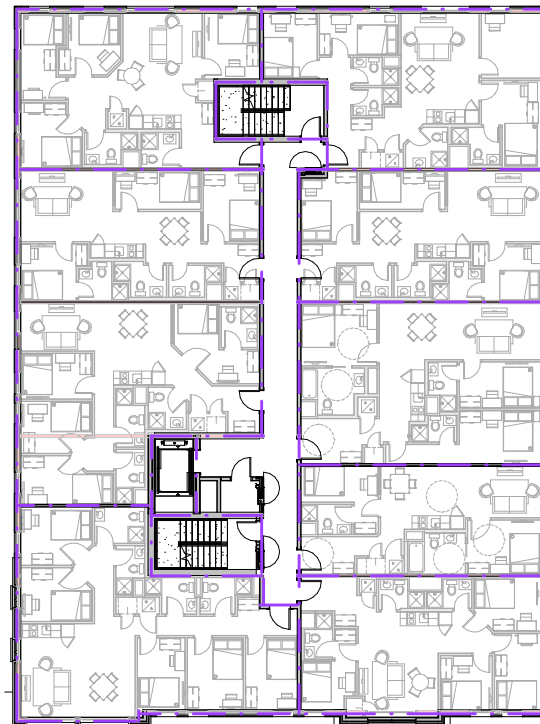
1 LEVEL 1 SEPARATION
1:150



3 LEVEL 3 SEPARATION
1:150



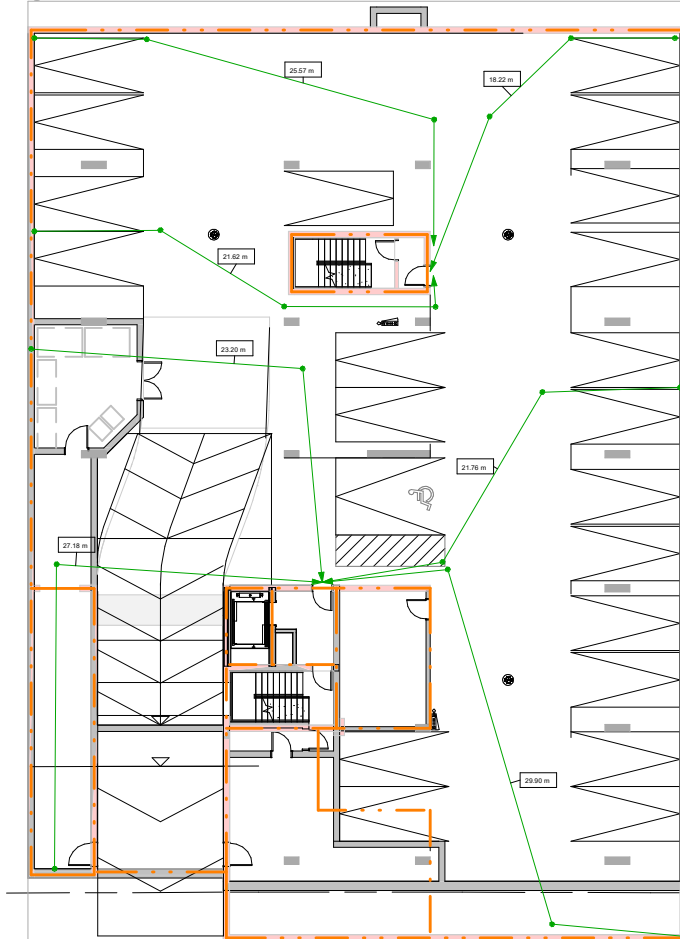
2 LEVEL 2 SEPARATION
1:150



4 LEVEL 4 SEPARATION
1:150



5 SECTION BB-FIRE SEPARATION
1:150



6 PARKING LEVEL - P1 SEPARATION
1:150



revision	description	date
1.5	ISSUED FOR 66 %	24-07-12

PROJECT NAME / NOM DU PROJET :

193 Notice

193 Notice St. Nepean, ON K2G 2Y5

DRAWING NAME / NOM DU DESSIN :

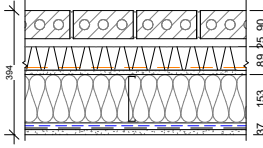
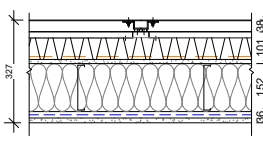
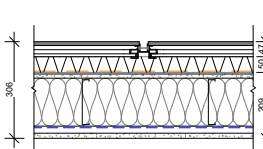
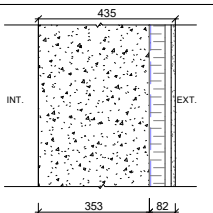
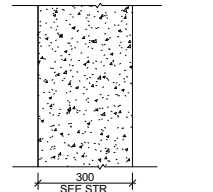
FIRE SEPARATION PLANS

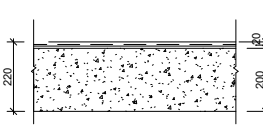
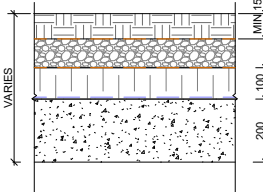
DRAWING INFORMATION / INFORMATION DU DESSIN :

PROJECT NO. / NO. DE PROJET :	23058
DATE :	07/08/24
DRAWN BY / DESSINÉ PAR :	SB
REVIEWED BY / VÉRIFIÉ PAR :	LG
SCALE / ÉCHELLE :	As indicated
PROJECT PHASE / PHASE DU PROJET :	2
DWG NO. / NO. DESSIN :	

A010

REVISION NO. / NO. DE RÉVISION : 1.5

EXTERIOR WALLS				
TYPE	CONSTRUCTION	DESCRIPTION		NOTES:
XT01		MASONRY WALL - BRICK 62mm - AIR SPACE 25mm - THERMAL INSULATION: 25mm SPRAY URETHANE (AIR BARRIER) - "Z" BAR IN GALV STEEL ADJUST WITH THERMAL BREAKAGE @ 600mm C / C MAX. - THERMAL INSULATION: SEMI-RIGID 50mm - EXTERIOR SUPPORT PANEL 12.7mm, SEALED JOINTS - GALV STEEL STUDS: 152mm @ 400 c / c min - THERMAL INSULATION: FIBERGLASS, FILL THE CAVITY - POLYETHYLENE VAPOR BARRIER MEMBRANE - OMEGA FURRING CHANNEL 22mm @ 600mm c / c - TYPE-X GYPSUM PANEL 15.9mm	RSI (min) RSI ITS DFR	3.4 5.62 - PROVIDE THE FIRE-RESISTANT COMPARTMENT SHEETS OF THE URETHANE INSULATION SPRAYED BEHIND THE BRICK, WHICH MUST BE INSTALLED SO AS TO HAVE A MAXIMUM OF 20m HORIZONTAL DISTANCE AND 3m VERTICAL DISTANCE BETWEEN THEM.
XT02		ALUMINUM PANEL WALL - 3mm ALUMINUM PANEL (SUCH AS PP-400 FROM PANFAB, 38mm) - OMEGA-TYPE FUR IN GALV STEEL, 19mm AT ALL JOINTS - "Z" BAR IN GALV STEEL ADJUST WITH THERMAL BREAKAGE @ 600mm C / C MAX. - THERMAL INSULATION: SEMI-RIGID 75mm - AIR BARRIER MEMBRANE - EXTERIOR SUPPORT PANEL 12.7mm - GALV STEEL STUDS: 152mm @ 400 c / c - THERMAL INSULATION: FIBERGLASS, FILL THE CAVITY - POLYETHYLENE VAPOR BARRIER MEMBRANE - OMEGA FURRING CHANNEL 22mm @ 600mm c / c - TYPE-X GYPSUM PANEL 15.9mm	RSI (min) RSI ITS DFR	3.4 5.19
XT03		CEMENT PANEL SIDING WALL - FIBER CEMENT PANEL, 12mm - COATING SUPPORT SYSTEM - OMEGA TYPE FUR, 22mm, VERTICAL, IN GALV, AT ALL JOINTS - "Z" BAR, 50mm HORIZONTAL, GALV, ADJUST WITH THERMAL BREAKAGE @ 600mm c / c MAX. - THERMAL INSULATION: SEMI-RIGID, 50mm - AIR BARRIER MEMBRANE - EXTERIOR SUPPORT PANEL, 12.7mm - GALV STEEL STUDS: 152mm @ 400 c / c - THERMAL INSULATION: FIBERGLASS, FILL THE CAVITY - POLYETHYLENE VAPOR BARRIER MEMBRANE - OMEGA FURRING CHANNEL 22mm @ 600mm c / c - TYPE-X GYPSUM PANEL 15.9mm	RSI (min) RSI ITS DFR	3.4 5.63
F01		FOUNDATION ISOLATED FROM THE EXTERIOR - ACRYLIC COATING ON 13mm CONCRETE PANEL WITH FIBERGLASS REINFORCEMENT (ON EXPOSED PART, SEE DRAWING FOR HEIGHT) - GALVANIZED STEEL SUB-CONTRACTS 19mm "J" AND "Z" PROFILE INSTALLED HORIZONTALLY, VERTICALLY INSTALLED @ 600 C / C - RIGID INSULATION 50mm - HOT APPLIED RUBBER BITUMEN MEMBRANE - CONCRETE FOUNDATION (SEE STRUCTURAL ENGINEER)	RSI (min) RSI ITS DFR	2.2 2.37 NOTE-1 : ENSURE ALL DAMP PROOFING IS INSTALLED ON EXTERIOR WALL FACE, WHERE SOIL IS IN CONTACT WITH CONCRETE WALL.
F02		CONCRETE WALL - CONCRETE WALL (SEE STRUCTURAL ENGINEER)	RSI (min) RSI ITS DFR	2.2 2.37 NOTE-1 : ENSURE ALL DAMP PROOFING IS INSTALLED ON EXTERIOR WALL FACE, WHERE SOIL IS IN CONTACT WITH CONCRETE WALL.

FLOORS				
TYPE	CONSTRUCTION	DESCRIPTION		NOTES:
FL01		TYPICAL FLOOR - FINISHING FLOORING (SEE FINISH PLANS) - SOUNDPROOFING MEMBRANE - CONCRETE SLAB (SEE STRUCTURE)	RSI (min) RSI ITS DFR	N/A
FL02		PARKING GARAGE FLOOR - BACKFILLED GROUND/ FINISHED GROUND WITH SLOPE - GEOTEXTILE MEMBRANE - CRUSHED STONE 0-3/4" COMPACTED(SEE STRUCTURE) - GEOTEXTILE MEMBRANE - 2x EXTRUDED POLYSTYRENE INSULATION 50 mm R-10 - CONCRETE SLAB.	RSI (min) RSI ITS DFR	2.9

NOT FOR CONSTRUCTION!
PAS POUR CONSTRUCTION!

This document and all information herein is confidential and the intellectual property of Rossmann Architecture Inc. It is disclosed in confidence on terms that it will not be disclosed to any third party, used, sold, loaned, licensed, or reproduced in whole or in any part in any manner or form for manufacturing, tendering or for any other purpose without the written permission of Rossmann Architecture Inc. The copyright is retained by Rossmann Architecture Inc.

Ce document, ainsi que toutes les informations contenues à l'intérieur, est la propriété de Rossmann Architecture Inc. Il est divulgué en confiance sous les termes qu'il ne sera pas divulgué à aucun tiers, utilisé, vendu, prêté, licencié ou reproduit en tout ou en partie d'aucune manière pour la manufacture, soumission ou pour autres fins sans la permission écrite de Rossmann Architecture Inc. Le droit d'auteur est réservé par Rossmann Architecture Inc.

PROJECT TEAM / ÉQUIPE DU PROJET :

- JAMES B. LENNOX & ASSOCIATES INC.**
LANDSCAPE ARCHITECTS
3332 CARLING AVE. #1100, OTTAWA, ONTARIO K2H 5A5 Tel: (613) 723-8168 Fax: (613) 343-3942
- D.B. GRAY ENGINEERING INC.**
1701 LONG POINT CIRCLE, OTTAWA, ONTARIO K2H 1T7 Tel: (613) 425-8044 Fax: (613) 425-8044 Email: dgray@dbgrayengineering.com
- QDI**
INGENIEUR EN CONSTRUCTION
835, BOULEVARD DE LA GAYETTE, GATINEAU, QUEBEC QC J8T 9G1 Tel: (819) 243-4414 Fax: (819) 243-4414 Email: qdi@qdi.ca
- LCA**
Landscape Architecture & Associates
15 RUE DE VALCOURT, UNITÉ 6, GATINEAU, QUEBEC QC J8T 9H1 Tel: (819) 243-4414 Fax: (819) 243-4414 Email: info@lca.ca



revision	description	date
1.5	ISSUED FOR 66 %	24-07-12
1.0	ISSUED FOR FEASIBILITY	23-06-02

PROJECT NAME / NOM DU PROJET :

193 Notice

193 Notice St, Nepean, ON K2G 2Y5

DRAWING NAME / NOM DU DESSIN :

EXTERIOR ASSEMBLIES

DRAWING INFORMATION / INFORMATION DU DESSIN :

PROJECT NO. / NO. DE PROJET :	23058
DATE :	07/07/24
DRAWN BY / DESSINÉ PAR :	SB
REVIEWED BY / VÉRIFIÉ PAR :	LG
SCALE / ÉCHELLE :	1 : 10
PROJECT PHASE / PHASE DU PROJET :	2
DWG NO. / NO. DESSIN :	

A020

NOT FOR CONSTRUCTION
PAS POUR CONSTRUCTION

This document and all information herein is confidential and the intellectual property of Rossmann Architecture Inc. It is disclosed in confidence on terms that it will not be disclosed to any third party, used, sold, loaned, licensed, or reproduced in whole or in any part in any manner or form for manufacturing, rendering or for any other purpose without the written permission of Rossmann Architecture Inc. The copyright is retained by Rossmann Architecture Inc.

Ce document, ainsi que toutes les informations contenues à l'intérieur, est la propriété de Rossmann Architecture Inc. Il est divulgué en confiance sous les termes qu'il ne sera pas divulgué à aucun tiers sans la permission écrite de Rossmann Architecture Inc. Le droit d'auteur est réservé par Rossmann Architecture Inc.

PROJECT TEAM / ÉQUIPE DU PROJET :

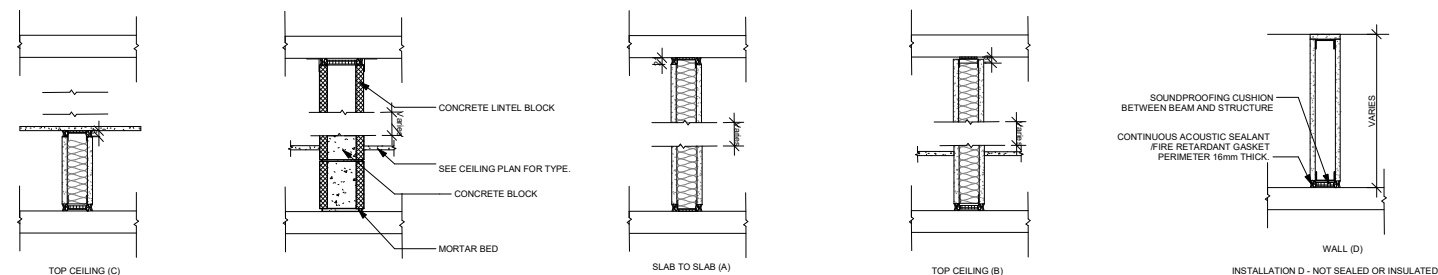
JAMES B. LENNOX & ASSOCIATES INC.
LANDSCAPE ARCHITECTS
3332 CARLING AVE. OTTAWA, ONTARIO K2H 5A5 Tel: (613) 723-8168 Fax: (613) 723-8168

D.B. GRAY ENGINEERING INC.
700 LONG POINT CIRCLE, OTTAWA, ONTARIO K2H 1Y7 Tel: (613) 425-8044 Fax: (613) 425-8044

QDI
Ingénierie et Conception
655, BOULEVARD DE LA GAYETTE, GATINEAU, QUÉBEC QJ 8T 8G1 Tel: (819) 243-4474 Fax: (819) 243-4474

LCA
Landscape Architecture & Associates
15 RUE DE VALCOURT, UNITÉ 6, GATINEAU, QUÉBEC QJ 8T 8H1 Tel: (819) 243-4474 Fax: (819) 243-4474

TYPE	CONSTRUCTION	DESCRIPTION	DIMENSIONS		INSTALLATION						NOTES	
			SIZE	WALL	INSULATION + SCELLANT (I)			SCELLANT (S)				
					FSTC	FRR	TESTS FRR	FSTC	FRR	TESTS FRR		
P1		- GYPSUM BOARD 13mm [1/2"] - METAL STUD @ 406mm [16"] O.C. - GYPSUM BOARD 13mm [1/2"]	1	41 mm [1 5/8"]	97 mm [2 5/8"]							- SEE THE FIRE RESISTANCE PLANS FOR PRECISION ON THE REQUIRED FIRE RESISTANCE DEPENDING ON THE LOCATIONS - THIS PARTITION IS SOMETIMES USED WITHOUT A ONE HOUR GRADE OF FIRE RESISTANCE REQUIRED (FOR ACOUSTIC PURPOSES)
			2	64 mm [2 1/2"]	90 mm [3 9/16"]							
			3	92 mm [3 5/8"]	118 mm [4 5/8"]							
			4	152 mm [6"]	178 mm [7"]							
P2		- GYPSUM BOARD 16mm [5/8"] - METAL STUD @ 406mm [16"] O.C. - GYPSUM BOARD 16mm [5/8"]	1	41 mm [1 5/8"]	73 mm [2 7/8"]							- SEE THE FIRE RESISTANCE PLANS FOR PRECISION ON THE REQUIRED FIRE RESISTANCE DEPENDING ON THE LOCATIONS - THIS PARTITION IS SOMETIMES USED WITHOUT A ONE HOUR GRADE OF FIRE RESISTANCE REQUIRED (FOR ACOUSTIC PURPOSES)
			2	64 mm [2 1/2"]	96 mm [3 3/4"]							
			3	92 mm [3 5/8"]	124 mm [4 7/8"]							
			4	152 mm [6"]	184 mm [7 1/4"]							
P3		- GYPSUM BOARD 16mm [5/8"] - TYPE-X - METAL STUD @ 406mm [16"] O.C. - GYPSUM BOARD 16mm [5/8"] - TYPE-X	1	41 mm [1 5/8"]	73 mm [2 7/8"]				60	ULC W453		- SEE THE FIRE RESISTANCE PLANS FOR PRECISION ON THE REQUIRED FIRE RESISTANCE DEPENDING ON THE LOCATIONS - THIS PARTITION IS SOMETIMES USED WITHOUT A ONE HOUR GRADE OF FIRE RESISTANCE REQUIRED (FOR ACOUSTIC PURPOSES)
			2	64 mm [2 1/2"]	96 mm [3 3/4"]	46	60	ULC W409	35	45	ULC W409	
			3	92 mm [3 5/8"]	124 mm [4 7/8"]	50	60	ULC W415	38	60	ULC W415	
			4	152 mm [6"]	184 mm [7 1/4"]							
P4		- (2) GYPSUM BOARD 16mm [5/8"] - TYPE-X - METAL STUD @ 406mm [16"] O.C. - GYPSUM BOARD 16mm [5/8"] - TYPE-X	1	41 mm [1 5/8"]	89 mm [3 1/2"]	50	60	ULC W453				- SEE THE FIRE RESISTANCE PLANS FOR PRECISION ON THE REQUIRED FIRE RESISTANCE DEPENDING ON THE LOCATIONS - THIS PARTITION IS SOMETIMES USED WITHOUT A ONE HOUR GRADE OF FIRE RESISTANCE REQUIRED (FOR ACOUSTIC PURPOSES)
			2	64 mm [2 1/2"]	112 mm [4 7/16"]	51	60	ULC W409				
			3	92 mm [3 5/8"]	140 mm [5 1/2"]	53	60	ULC W415				
			4	152 mm [6"]	200 mm [7 7/8"]							



- INSTALLATION BI - ISOLÉ ET SCELLÉ (I)
 - BS INSTALLATION - SEALED (S)
 - INSTALLATION B - NOT SEALED OR INSULATED
- WALL (D)
INSTALLATION D - NOT SEALED OR INSULATED
- AI INSTALLATION - (I) INSULATED AND SEALED
 - INSTALLATION AS - (S) SEALED WITHOUT INSULATION
 - INSTALLATION A - PAS SCELLÉ OU ISOLÉ
- SLAB TO SLAB (A)
INSTALLATION A - PAS SCELLÉ OU ISOLÉ
- INSTALLATION BI - ISOLÉ ET SCELLÉ (I)
 - BS INSTALLATION - SEALED (S)
 - INSTALLATION B - NOT SEALED OR INSULATED
- TOP CEILING (B)
INSTALLATION B - NOT SEALED OR INSULATED
- WALL (D)
INSTALLATION D - NOT SEALED OR INSULATED

General Notes :

- A. In all situations where a gypsum wall meets an exterior wall, run a continuous joint of sealant, concealed behind the gypsum board, along the entire length of the junction between the two surfaces.
- B. Stagger electrical junction boxes 24" c/c. Avoid installing them back to back at all times.
- C. Refer to engineers' documents for exact load-bearing wall specifications.
- D. For partitions with a fire-resistance rating: seal around the perimeter, as well as all ducts passing through them, with a continuous joint of fire-retardant sealant
- E. For all acoustic partitions: seal around the perimeter, as well as all through ducts, with a continuous joint of acoustic sealant.



1.5	ISSUED FOR 66 %	24-07-12
1.0	ISSUED FOR FEASIBILITY	23-06-02
revision	description	date

PROJECT NAME / NOM DU PROJET :

193 Notice

193 Notice St. Nepean, ON K2G 2Y5

INTERIOR PARTITIONS ASSEMBLIES

DRAWING INFORMATION / INFORMATION DU DESSIN :

PROJECT NO. / NO. DE PROJET : **23058**

DATE : **07/08/24**

DRAWN BY / DESSINÉ PAR : **SB**

REVIEWED BY / VÉRIFIÉ PAR : **LG**

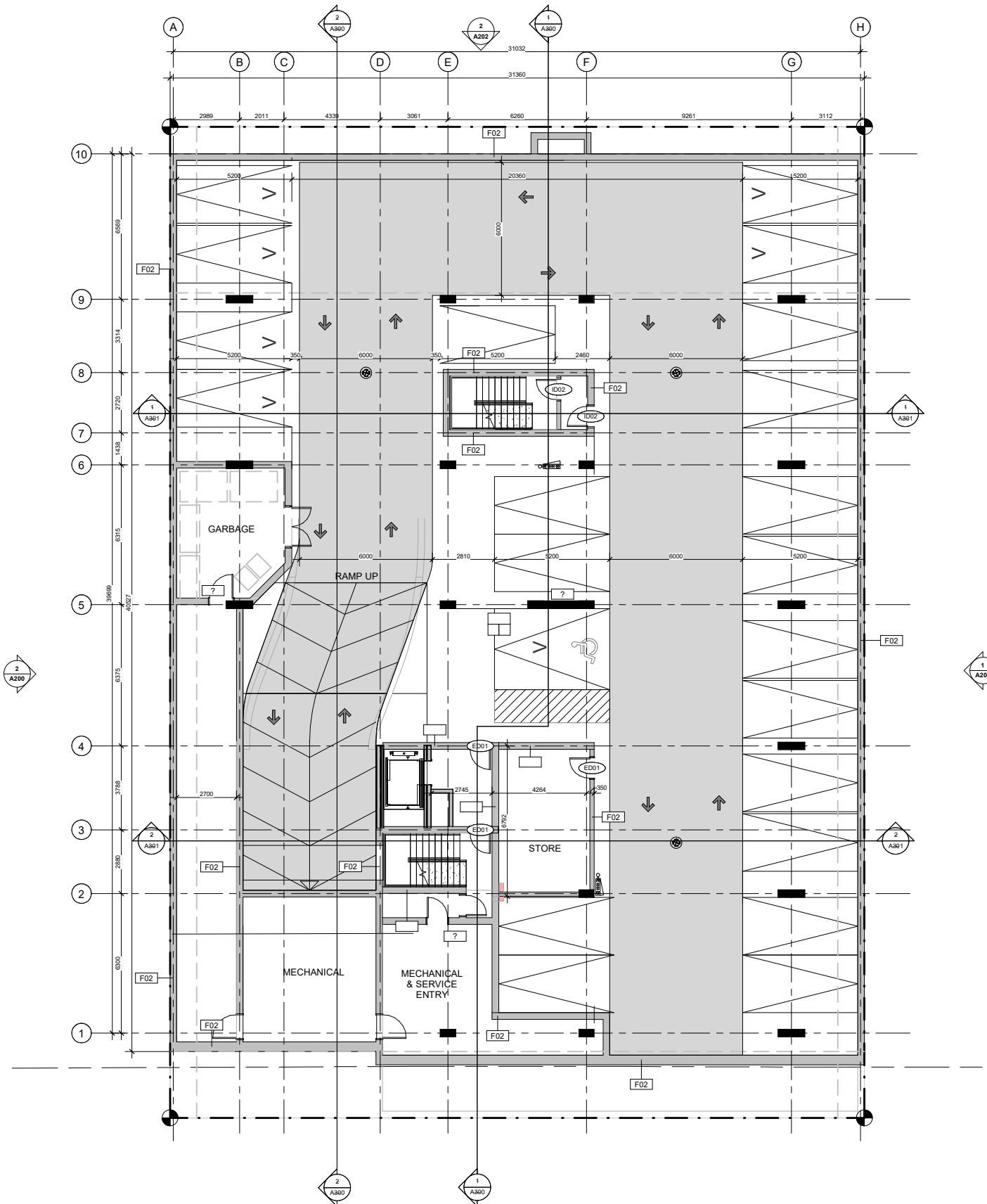
SCALE / ÉCHELLE : **1 : 10**

PROJECT PHASE / PHASE DU PROJET : **2**

DWG NO. / NO. DESSIN :

A021

REVISION NO. / NO. DE RÉVISION : 1.5



1 PARKING LEVEL - P1
1 : 100

TYPICAL DRAWINGS NOTES:

- EXTEND ALL PARTITIONS TO UIS DECK OR SLAB U.N.
- STAGGER ALL JOINTS OF MULTIPLE GYPSUM BOARD LAYERS.
- INNER LAYERS MUST BE TAPED BUT NOT SANDED.
- INSTALL GYPSUM BOARD WITH NO JOINTS GREATER THAN 6mm.
- TAPE ALL GYPSUM BOARD JOINTS WITH DRYWALL COMPOUND.
- FIRE-STOP CAULK OUTSIDE LAYER OF GYPSUM BOARD OF ALL RATED STEEL STUD PARTITIONS AT TOP AND BOTTOM AND ALL PENETRATIONS.
- ACCOUSTIC CAULK OUTSIDE LAYER OF GYPSUM BOARD OF ALL NON-RATED STEEL STUD PARTITIONS AT ALL PENETRATIONS.
- CAULKING OF ANY GAP OVER 6 mm MUST BE OVER ROD BACKUP.
- LOCATE ELECTRICAL BOXES ON OPPOSING FACES OF THE WALL IN SEPARATE STUD CAVITY.
- TRIM AND EXTEND THERMAL AND ACOUSTIC BATT INSULATION CONTINUOUSLY BEHIND AND AROUND ALL ELECTRICAL BOXES.
- PROVIDE SLOTTED TOP TRACK DEFLECTION HEAD AT T/O ALL STEEL STUD WALL AND PARTITION ASSEMBLIES.
- PROVIDE 20mm DEFLECTION ALLOWANCE AT T/O ALL CONCRETE BLOCK PARTITIONS.
- PACK VOID AT T/O OF ALL FIRE RATED CONCRETE BLOCK PARTITIONS WITH MINERAL WOOL AND SEAL IN PLACE WITH FIRE-STOP CAULK.
- SEAL VOID AT T/O OF ALL NON-RATED CONCRETE BLOCK PARTITIONS WITH ACOUSTIC CAULK OVER BACKER ROD.
- PROVIDE MAX. 0.5mm METAL STUDS FOR ALL INTERIOR PARTITIONS. NOTIFY ARCHITECT WHERE HEAVIER GAUGE IS NEEDED TO MEET DEFLECTIONS REQUIREMENT.
- STUD WALL REINFORCEMENT:**
SECURE 19mm VENEER CORE PLYWOOD BLOCKING TO STUDS WITHIN THE WALL CAVITY AS REQUIRED IN ORDER FOR THE FUTURE INSTALLATION OF GRAB BARS LOCATED IN ALL SUITE WASHROOMS AND INSTALL BLOCKING TO ACCOMMODATE THE FOLLOWING GRAB BAR CONFIGURATIONS:
 - 700mm TO 1500mm AFF ON ALL WALLS ADJACENT TO A WATER CLOSET EXTENDING 400mm TO 1200mm FROM WALL BEHIND THE WATER CLOSET
 - 800mm LONG x 200mm HIGH CENTERED ON THE WALL BEHIND THE WATER CLOSET AND 150mm ABOVE THE TANK
 - 850mm AFF x 200mm HIGH FULL LENGTH OF WALL OPPOSITE THE ENTRANCE TO THE SHOWER
- GRIND HIGH-POINTS AND SKIM-COAT ALL EXPOSED CONCRETE SURFACES WITH DRYWALL COMPOUND.
- MISCELLANEOUS METAL:**
 - CONTINUOUSLY WELD ALL STEEL COMPONENTS
 - FILL AND GRIND ALL STEEL CONNECTIONS SMOOTH
 - FINISH ALL EXPOSED STEEL SURFACES WITH PAINT
- USE MOISTURE RESISTANT GYPSUM BOARD ON ALL WASHROOM AND HIGH HUMIDITY AREA CEILINGS AND WALLS.
- USE GYPSUM TILE BACKER BOARD ON ALL SHOWER WALLS.
- FIRE-CAULK PERIMETER OF ALL ACOUSTIC GYPSUM BOARD PARTITIONS.
- WHERE OUTLET BOXES ARE INSTALLED BACK TO BACK, PACK CAVITY AROUND BOTH OUTLET BOXES AND SECURE ONE LAYER OF DRYWALL IN THE AIR-SPACE TO THE BACK SIDE OF ONE ROW OF STUDS. EXTEND THESE MEASURES FOR A MINIMUM RADIUS OF 600mm FROM CENTER OF EACH OUTLET BOX. IN ADDITION, PROVIDE PUTTY PADS TO ALL ELECTRICAL BOXES WHERE MORE THAN ONE ELECTRICAL BOX IS INSTALLED IN A SINGLE STUD CAVITY.
- SHIM AS REQUIRED TO PLUMB WALLS FOR ALL FURRING CHANNELS. ADJUST OTHER DIMENSION ACCORDINGLY.
- WHERE BATHTUBS ABUT A FIRE SEPARATION APPLY AN ADDITIONAL LAYER OF WATER RESISTANT GYPSUM BOARD TO PROVIDE SUBSTRATE FOR FINISHES ABOVE BATHTUB.
- TYPICAL SUITE AND CORRIDOR DEMISING WALL ACOUSTIC REQUIREMENTS:**
 - CONTINUE DEMISING WALL BETWEEN SUITES THROUGH EXTERIOR WALL STUD CAVITY TO INSIDE FACE OF EXTERIOR SHEATHING AND FIRE CAULK
 - SUITE SIDE OF CORRIDOR DEMISING WALL GYPSUM TO BE DISCONTINUOUS AT JUNCTION WITH SUITE DEMISING WALL
 - STAGGER GYPSUM LAYERS AT JOINTS
- ACCESS LADDERS MUST CONFORM TO THE REQUIREMENTS OF ENGINEERING DATA SHEET 2-04, ISSUED BY THE MINISTRY OF LABOUR.

NOT TO CONSTRUCTION!
PAS POUR CONSTRUCTION!

This document and all information herein is confidential and the intellectual property of Rossmann Architecture Inc. It is disclosed in confidence on terms that it will not be disclosed to any third party, used, sold, loaned, licensed, or reproduced in whole or in any part in any manner or form for manufacturing, tending or for any other purpose without the written permission of Rossmann Architecture Inc. The copyright is retained by Rossmann Architecture Inc.

Ce document, ainsi que tous les renseignements qu'il contient, est la propriété de Rossmann Architecture Inc. Il est divulgué en confiance sous les termes qu'il ne sera pas divulgué à aucun tiers sans la permission écrite de Rossmann Architecture Inc. Le droit d'auteur est réservé par Rossmann Architecture Inc.

PROJECT TEAM / ÉQUIPE DU PROJET :

- JAMES B. LENNOX & ASSOCIATES INC.**
LANDSCAPE ARCHITECTS
3332 CARLING AVE. OTTAWA, ONTARIO K2H 5A5 Tel: (613) 723-1169 Fax: (613) 723-3342
- D.B. GRAY ENGINEERING INC.**
700 LONG POINT CIRCLE, OTTAWA, ONTARIO K2H 1K3 Tel: (613) 425-8044 Fax: (613) 425-8044
- GGI**
1000 BOULEVARD LA GAYETTE, GATINEAU, QUEBEC QC J8T 9G1 Tel: (819) 243-4414 Fax: (819) 243-4414
- LCA**
Landscape Architecture & Planning
15 RUE DE VALCOURT, QUÉBEC, QUÉBEC G1R 1H1 Tel: (514) 243-4474 Fax: (514) 243-4474

KEY PLAN / PLAN CLÉ :



CLIENT :



revision	description	date
1.6	Mechanical Co-Ordination	24-08-21
1.5	ISSUED FOR 66 %	24-07-12
1.4	ISSUED FOR SPA	24-05-05
1.3	ISSUED FOR SPA	24-02-15
1.2	ISSUED FOR COORD	23-09-22
1.1	ISSUED FOR 60 %	23-07-19
1.0	ISSUED FOR FEASIBILITY	23-06-02

PROJECT NAME / NOM DU PROJET :

193 Notice

193 Notice St. Nepean, ON K2G 2Y5

DRAWING NAME / NOM DU DESSIN :

P1 PARKING LEVEL

DRAWING INFORMATION / INFORMATION DU DESSIN :

PROJECT NO. / NO. DE PROJET :	23058
DATE :	23/06/05
DRAWN BY / DESSINÉ PAR :	SB
REVIEWED BY / VÉRIFIÉ PAR :	LG
SCALE / ÉCHELLE :	As indicated
PROJECT PHASE / PHASE DU PROJET :	2
DWG NO. / NO. DESSIN :	

A100.1

REVISION NO. / NO. DE RÉVISION : 1.6

NOT TO CONSTRUCTION
PAS POUR CONSTRUCTION

This document and all information herein is confidential and the intellectual property of Rossmann Architecture Inc. It is disclosed in confidence on terms that it will not be disclosed to any third party, used, sold, loaned, licensed, or reproduced in whole or in any part in any manner or form for manufacturing, tendering or for any other purpose without the written permission of Rossmann Architecture Inc. The copyright is retained by Rossmann Architecture Inc.

Ce document, ainsi que tous les renseignements qu'il contient, est la propriété de Rossmann Architecture Inc. Il est divulgué en confiance sous les termes qu'il ne sera pas divulgué à aucun tiers, utilisé, vendu, prêté, licencié ou reproduit en tout ou en partie d'aucune manière pour la manufacture, soumission ou pour autres fins sans la permission écrite de Rossmann Architecture Inc. Le droit d'auteur est réservé par Rossmann Architecture Inc.

PROJECT TEAM / ÉQUIPE DU PROJET :

JAMES B. LENNOX & ASSOCIATES INC.
LANDSCAPE ARCHITECTS

3332 CARLING AVE. OTTAWA, ONTARIO K2H 5A5 Tel: (613) 723-1169 Fax: (613) 723-1169

D.B. GRAY ENGINEERING INC.

700 LONG POINT CIRCLE, OTTAWA, ONTARIO K2H 1K3 Tel: (613) 425-8044 Fax: (613) 425-8044

GGI
Engineering & Design
1000 BOULEVARD LA GAYETTE, GATINEAU, QUEBEC QC J8T 9G1 Tel: (819) 243-4414 Fax: (819) 243-4414

LCA
Landscape Architecture & Associates
15 RUE DE VALLOURE, UNITE 8, GATINEAU, QUEBEC QC J8T 9H1 Tel: (819) 243-4414 Fax: (819) 243-4414

KEY PLAN / PLAN CLÉ :



CLIENT :



revision	description	date
1.6	Mechanical Co-Ordination	24-08-21
1.5	ISSUED FOR 66.1%	24-07-12
1.4	ISSUED FOR SPA	24-06-05
1.3	ISSUED FOR SPA	24-02-15
1.1	ISSUED FOR 33%	23-07-19
1.0	ISSUED FOR FEASIBILITY	23-06-02

PROJECT NAME / NOM DU PROJET :

193 Notice

193 Notice St. Nepean, ON K2G 2Y5

DRAWING NAME / NOM DU DESSIN :

FLOOR LEVEL 2

DRAWING INFORMATION / INFORMATION DU DESSIN :

PROJECT NO. / NO. DE PROJET : **23058**

DATE : **23/06/05**

DRAWN BY / DESSINÉ PAR : **SB**

REVIEWED BY / VÉRIFIÉ PAR : **LG**

SCALE / ÉCHELLE : **As indicated**

PROJECT PHASE / PHASE DU PROJET : **2**

DWG NO. / NO. DESSIN :

A102

REVISION NO. / NO. DE RÉVISION : **1.6**

TYPICAL DRAWINGS NOTES:

EXTEND ALL PARTITIONS TO UIS DECK OR SLAB U.N.

STAGGER JOINTS OF MULTIPLE GYPSUM BOARD LAYERS.

INNER LAYERS MUST BE TAPED BUT NOT SANDED.

INSTALL GYPSUM BOARD WITH NO JOINTS GREATER THAN 6mm.

TAPE ALL GYPSUM BOARD JOINTS WITH DRYWALL COMPOUND.

FIRE-STOP CAULK OUTSIDE LAYER OF GYPSUM BOARD OF ALL RATED STEEL STUD PARTITIONS AT TOP AND BOTTOM AND ALL PENETRATIONS.

ACQUSTIC CAULK OUTSIDE LAYER OF GYPSUM BOARD OF ALL NON-RATED STEEL STUD PARTITIONS AT ALL PENETRATIONS.

CAULKING OF ANY GAP OVER 6 mm MUST BE OVER ROD BACKUP.

LOCATE ELECTRICAL BOXES ON OPPOSING FACES OF THE WALL IN SEPARATE STUD CAVITY.

TRIM AND EXTEND THERMAL AND ACOUSTIC BATT INSULATION CONTINUOUSLY BEHIND AND AROUND ALL ELECTRICAL BOXES.

PROVIDE SLOTTED TOP TRACK DEFLECTION HEAD AT T/O ALL STEEL STUD WALL AND PARTITION ASSEMBLIES.

PROVIDE 20mm DEFLECTION ALLOWANCE AT T/O ALL CONCRETE BLOCK PARTITIONS

PACK VOID AT T/O OF ALL FIRE RATED CONCRETE BLOCK PARTITIONS WITH MINERAL WOOL AND SEAL IN PLACE WITH FIRE-STOP CAULK.

SEAL VOID AT T/O OF ALL NON-RATED CONCRETE BLOCK PARTITIONS WITH ACOUSTIC CAULK OVER BACKER ROD.

PROVIDE MAX. 0.50mm METAL STUDS FOR ALL INTERIOR PARTITIONS. NOTIFY ARCHITECT WHERE HEAVIER GAUGE IS NEEDED TO MEET DEFLECTIONS REQUIREMENT.

STUD WALL REINFORCEMENT:

SECURE 19mm VENEER CORE PLYWOOD BLOCKING TO STUDS WITHIN THE WALL CAVITY AS REQUIRED TO ANCHOR THE FUTURE INSTALLATION OF GRAB BARS LOCATED IN ALL SUITE WASHROOMS AND INSTALL BLOCKING TO ACCOMMODATE THE FOLLOWING GRAB BAR CONFIGURATIONS:

- 700mm TO 1500mm AFF ON ALL WALLS ADJACENT TO A WATER CLOSET EXTENDING 400mm TO 1200mm FROM WALL BEHIND THE WATER CLOSET

- 800mm LONG x 200mm HIGH CENTERED ON THE WALL BEHIND THE WATER CLOSET AND 150mm ABOVE THE TANK

- 850mm AFF x 200mm HIGH FULL LENGTH OF WALL OPPOSITE THE ENTRANCE TO THE SHOWER

GRIND HIGH-POINTS AND SKIM-COAT ALL EXPOSED CONCRETE SURFACES WITH DRYWALL COMPOUND.

MISCELLANEOUS METAL:

- CONTINUOUSLY WELD ALL STEEL COMPONENTS
- FILL AND GRIND ALL STEEL CONNECTIONS SMOOTH
- FINISH ALL EXPOSED STEEL SURFACES WITH PAINT

USE MOISTURE RESISTANT GYPSUM BOARD ON ALL WASHROOM AND HIGH HUMIDITY AREA CEILINGS AND WALLS.

USE GYPSUM TILE BACKER BOARD ON ALL SHOWER WALLS.

FIRE-CAULK PERIMETER OF ALL ACOUSTIC GYPSUM BOARD PARTITIONS.

WHERE OUTLET BOXES ARE INSTALLED BACK TO BACK, PACK CAVITY AROUND BOTH OUTLET BOXES AND SECURE ONE LAYER OF DRYWALL IN THE AIR-SPACE TO THE BACK SIDE OF ONE ROW OF STUDS. EXTEND THESE MEASURES FOR A MINIMUM RADIUS OF 600mm FROM CENTER OF EACH OUTLET BOX. IN ADDITION, PROVIDE PUTTY PADS TO ALL ELECTRICAL BOXES WHERE MORE THAN ONE ELECTRICAL BOX IS INSTALLED IN A SINGLE STUD CAVITY.

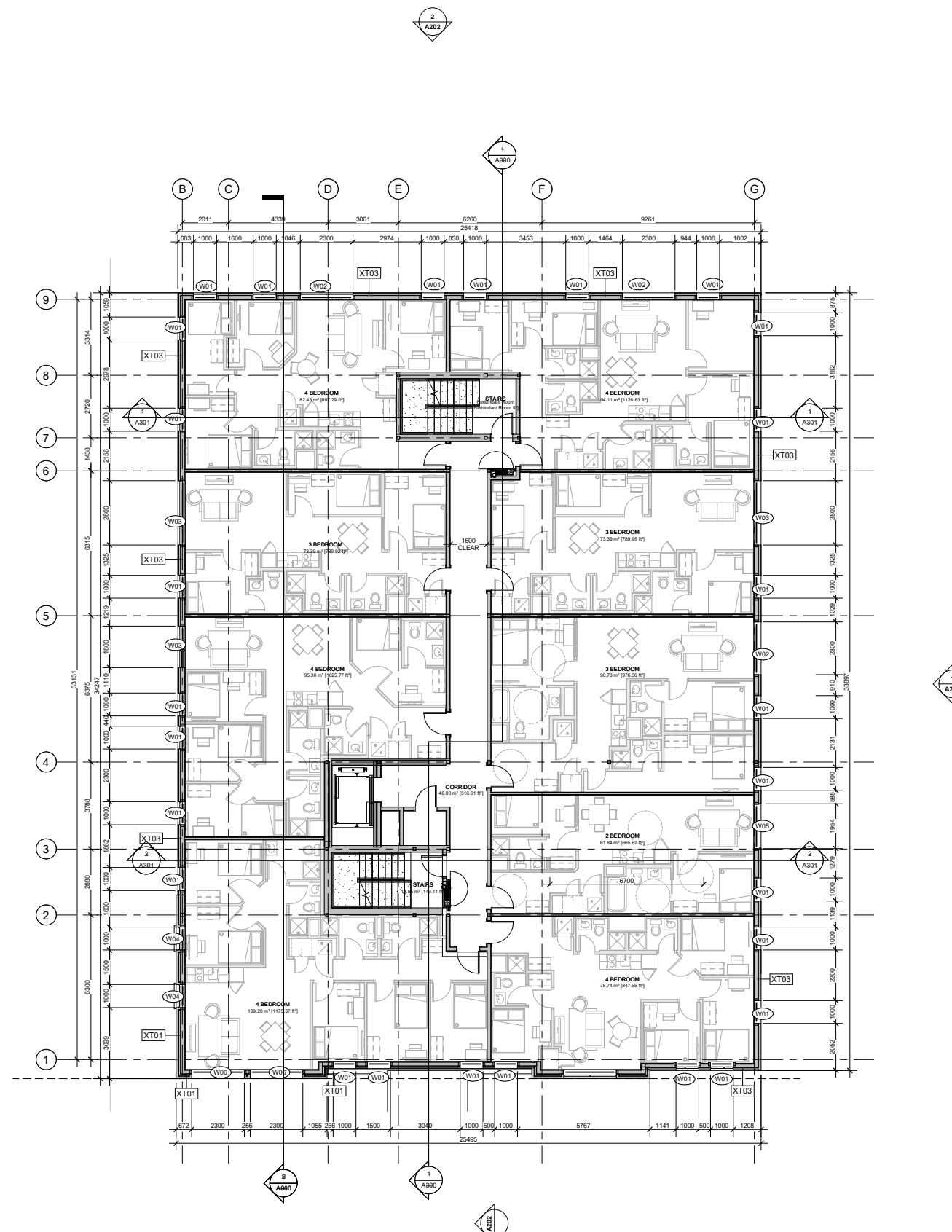
SHIM AS REQUIRED TO PLUMB WALLS FOR ALL FURRING CHANNELS. ADJUST OTHER DIMENSION ACCORDINGLY.

WHERE BATHTUBS ABUT A FIRE SEPARATION APPLY AN ADDITIONAL LAYER OF WATER RESISTANT GYPSUM BOARD TO PROVIDE SUBSTRATE FOR FINISHES ABOVE BATHTUB.

TYPICAL SUITE AND CORRIDOR DEMISING WALL ACOUSTIC REQUIREMENTS:

- CONTINUE DEMISING WALL BETWEEN SUITES THROUGH EXTERIOR WALL STUD CAVITY TO INSIDE FACE OF EXTERIOR SHEATHING AND FIRE CAULK
- SUITE SIDE OF CORRIDOR DEMISING WALL GYPSUM TO BE DISCONTINUOUS AT JUNCTION WITH SUITE DEMISING WALL
- STAGGER GYPSUM LAYERS AT JOINTS

ACCESS LADDERS MUST CONFORM TO THE REQUIREMENTS OF ENGINEERING DATA SHEET 2-04, ISSUED BY THE MINISTRY OF LABOUR.



1 LEVEL 2
1 : 100

NOT TO CONSTRUCTION
PAS POUR CONSTRUCTION

This document and all information herein is confidential and the intellectual property of Rossmann Architecture Inc. It is disclosed in confidence on terms that it will not be disclosed to any third party, used, sold, loaned, licensed, or reproduced in whole or in any part in any manner or form for manufacturing, tendering or for any other purpose without the written permission of Rossmann Architecture Inc. The copyright is retained by Rossmann Architecture Inc.

Ce document, ainsi que tous les renseignements qu'il contient, est la propriété de Rossmann Architecture Inc. Il est divulgué en confiance sous les termes qu'il ne sera pas divulgué à aucun tiers sans la permission écrite de Rossmann Architecture Inc. Le droit d'auteur est réservé par Rossmann Architecture Inc.

PROJECT TEAM / ÉQUIPE DU PROJET :

JAMES B. LENNOX & ASSOCIATES INC.
LANDSCAPE ARCHITECTS
3332 CARLING AVE. OTTAWA, ONT. K2H 8P9 Tel: (613) 723-1169
ONTARIO K2H 8P9 Fax: (613) 723-3162

D.B. GRAY ENGINEERING INC.
700 LONG POINT CIRCLE, OTTAWA, ONTARIO K2H 1K3 Tel: (613) 425-8844
@grayengr.com

GGI
INGENIEUR ARCHITECTE
505, BOULEVARD DE LA GAYETTE, GATINEAU, QUÉBEC QC J8T 9G1 Tel: (819) 243-4414
GGI.com

LCA
Landscape Architecture & Associates
15 RUE DE VALCOURT, UNITÉ 6, GATINEAU, QUÉBEC QC J8T 9H1 Tel: (819) 243-4414
lca@lcaprofit.ca

KEY PLAN / PLAN CLÉ :



CLIENT :



1.6	Mechanical Co-Ordination	24-08-21
1.5	ISSUED FOR 65 %	24-07-12
1.4	ISSUED FOR SPA	24-06-05
revision	description	date

PROJECT NAME / NOM DU PROJET :

193 Notice

193 Notice St, Nepean, ON K2G 2Y5

DRAWING NAME / NOM DU DESSIN :

FLOOR LEVEL 3

DRAWING INFORMATION / INFORMATION DU DESSIN :

PROJECT NO. / NO. DE PROJET :	23058
DATE :	06/03/24
DRAWN BY / DESSINÉ PAR :	SB
REVIEWED BY / VÉRIFIÉ PAR :	LG
SCALE / ÉCHELLE :	As indicated
PROJECT PHASE / PHASE DU PROJET :	2
DWG NO. / NO. DESSIN :	A103

REVISION NO. / NO. DE RÉVISION : 1.6

TYPICAL DRAWINGS NOTES:

- EXTEND ALL PARTITIONS TO U/S DECK OR SLAB U.N.
- STAGGER ALL JOINTS OF MULTIPLE GYPSUM BOARD LAYERS.
- INNER LAYERS MUST BE TAPED BUT NOT SANDED.
- INSTALL GYPSUM BOARD WITH NO JOINTS GREATER THAN 6mm.
- TAPE ALL GYPSUM BOARD JOINTS WITH DRYWALL COMPOUND.
- FIRE-STOP CAULK OUTSIDE LAYER OF GYPSUM BOARD OF ALL RATED STEEL STUD PARTITIONS AT TOP AND BOTTOM AND ALL PENETRATIONS.
- ACQUISITIVE CAULK OUTSIDE LAYER OF GYPSUM BOARD OF ALL NON-RATED STEEL STUD PARTITIONS AT ALL PENETRATIONS.
- CAULKING OF ANY GAP OVER 6 mm MUST BE OVER ROD BACKUP.
- LOCATE ELECTRICAL BOXES ON OPPOSING FACES OF THE WALL IN SEPARATE STUD CAVITY.
- TRIM AND EXTEND THERMAL AND ACOUSTIC BATT INSULATION CONTINUOUSLY BEHIND AND AROUND ALL ELECTRICAL BOXES.
- PROVIDE SLOTTED TOP TRACK DEFLECTION HEAD AT T/O ALL STEEL STUD WALL AND PARTITION ASSEMBLIES.
- PROVIDE 20mm DEFLECTION ALLOWANCE AT T/O ALL CONCRETE BLOCK PARTITIONS.
- PACK VOID AT T/O OF ALL FIRE RATED CONCRETE BLOCK PARTITIONS WITH MINERAL WOOL AND SEAL IN PLACE WITH FIRE-STOP CAULK.
- SEAL VOID AT T/O OF ALL NON-RATED CONCRETE BLOCK PARTITIONS WITH ACOUSTIC CAULK OVER BACKER ROD.
- PROVIDE MAX. 0.50mm METAL STUDS FOR ALL INTERIOR PARTITIONS. NOTIFY ARCHITECT WHERE HEAVIER GAUGE IS NEEDED TO MEET DEFLECTIONS REQUIREMENT.

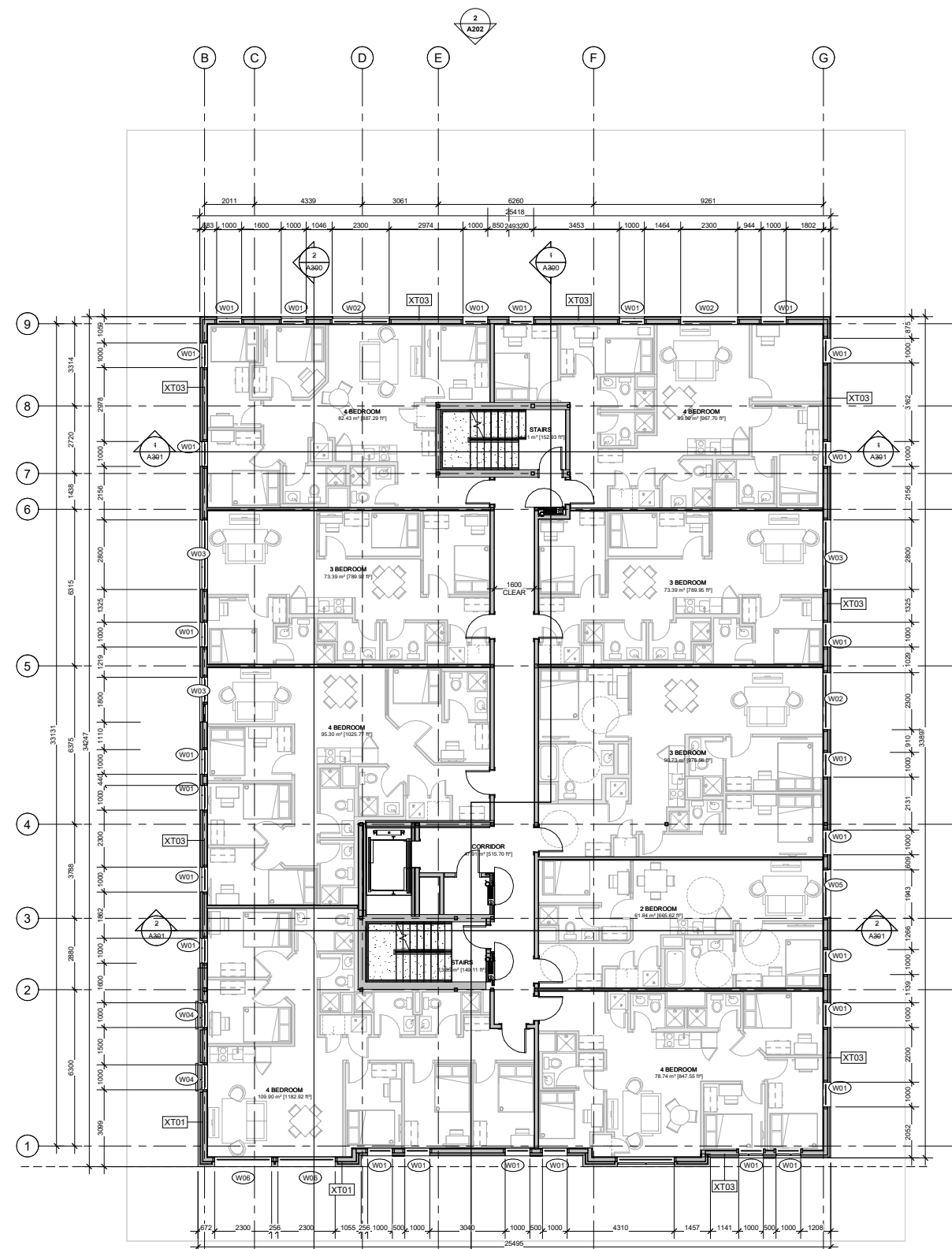
- STUD WALL REINFORCEMENT:
- SECURE 19mm VENEER CORE PLYWOOD BLOCKING TO STUDS WITHIN THE WALL CAVITY AS REQUIRED TO ANCHOR THE FUTURE INSTALLATION OF GRAB BARS LOCATED IN ALL SUITE WASHROOMS AND INSTALL BLOCKING TO ACCOMMODATE THE FOLLOWING GRAB BAR CONFIGURATIONS:
- 700mm TO 1500mm AFF ON ALL WALLS ADJACENT TO A WATER CLOSET EXTENDING 400mm TO 1200mm FROM WALL BEHIND THE WATER CLOSET
- 800mm LONG x 200mm HIGH CENTERED ON THE WALL BEHIND THE WATER CLOSET AND 150mm ABOVE THE TANK
- 850mm AFF x 200mm HIGH FULL LENGTH OF WALL OPPOSITE THE ENTRANCE TO THE SHOWER

- GRIND HIGH-POINTS AND SKIM-COAT ALL EXPOSED CONCRETE SURFACES WITH DRYWALL COMPOUND.
- MISCELLANEOUS METAL:
- CONTINUOUSLY WELD ALL STEEL COMPONENTS
- FILL AND GRIND ALL STEEL CONNECTIONS SMOOTH
- FINISH ALL EXPOSED STEEL SURFACES WITH PAINT

- USE MOISTURE RESISTANT GYPSUM BOARD ON ALL WASHROOM AND HIGH HUMIDITY AREA CEILING AND WALLS.
- USE GYPSUM TILE BACKER BOARD ON ALL SHOWER WALLS.
- FIRE-CAULK PERIMETER OF ALL ACOUSTIC GYPSUM BOARD PARTITIONS.
- WHERE OUTLET BOXES ARE INSTALLED BACK TO BACK, PACK CAVITY AROUND BOTH OUTLET BOXES AND SECURE ONE LAYER OF DRYWALL IN THE AIR-SPACE TO THE BACK SIDE OF ONE ROW OF STUDS. EXTEND THESE MEASURES FOR A MINIMUM RADIUS OF 600mm FROM CENTER OF EACH OUTLET BOX. IN ADDITION, PROVIDE PUTTY PADS TO ALL ELECTRICAL BOXES WHERE MORE THAN ONE ELECTRICAL BOX IS INSTALLED IN A SINGLE STUD CAVITY.
- SHIM AS REQUIRED TO PLUMB WALLS FOR ALL FURRING CHANNELS. ADJUST OTHER DIMENSION ACCORDINGLY.
- WHERE BATHTUBS ABUT A FIRE SEPARATION APPLY AN ADDITIONAL LAYER OF WATER RESISTANT GYPSUM BOARD TO PROVIDE SUBSTRATE FOR FINISHES ABOVE BATHTUB.

- TYPICAL SUITE AND CORRIDOR DEMISING WALL ACOUSTIC REQUIREMENTS:
- CONTINUE DEMISING WALL BETWEEN SUITES THROUGH EXTERIOR WALL STUD CAVITY TO INSIDE FACE OF EXTERIOR SHEATHING AND FIRE CAULK
- SUITE SIDE OF CORRIDOR DEMISING WALL GYPSUM TO BE DISCONTINUOUS AT JUNCTION WITH SUITE DEMISING WALL
- STAGGER GYPSUM LAYERS AT JOINTS

- ACCESS LADDERS MUST CONFORM TO THE REQUIREMENTS OF ENGINEERING DATA SHEET 2-04, ISSUED BY THE MINISTRY OF LABOUR.



1 LEVEL 3
1:100

NOT FOR CONSTRUCTION
PAS POUR CONSTRUCTION

This document and all information herein is confidential and the intellectual property of Rossmann Architecture Inc. It is disclosed in confidence on terms that it will not be disclosed to any third party, used, sold, loaned, licensed, or reproduced in whole or in any part in any manner or form for manufacturing, tendering or for any other purpose without the written permission of Rossmann Architecture Inc. The copyright is retained by Rossmann Architecture Inc.

Ce document, ainsi que tous les renseignements qu'il contient, est la propriété de Rossmann Architecture Inc. Il est divulgué en confiance sous les termes qu'il ne sera pas divulgué à aucun tiers sans la permission écrite de Rossmann Architecture Inc. Le droit d'auteur est réservé par Rossmann Architecture Inc.

PROJECT TEAM / ÉQUIPE DU PROJET :

JAMES B. LENNOX & ASSOCIATES INC.
LANDSCAPE ARCHITECTS
3332 CARLING AVE. OTTAWA, ONT. K2H 8P9 Tel: (613) 723-1168
ONTARIO K2H 5A3 Fax: (613) 343-3342

D.B. GRAY ENGINEERING INC.
700 LONG POINT CIRCLE, OTTAWA, ONT. K1H 7K9 Tel: (613) 425-8044
ONTARIO K1H 7K9 Fax: (613) 425-8044
@grayengr.com

ODI
1000 BOULEVARD LA GAFFRE, GATINEAU, QC J8Y 3W5 Tel: (819) 243-4414
QUEBEC QC J8Y 3W5 Fax: (819) 243-4414

LCA
15 RUE DE VALCOURT, UNITE 6, GATINEAU, QC J8Y 3W5 Tel: (819) 243-4414
QUEBEC QC J8Y 3W5 Fax: (819) 243-4414

TYPICAL DRAWINGS NOTES:

- EXTEND ALL PARTITIONS TO UIS DECK OR SLAB U.N.
- STAGGER ALL JOINTS OF MULTIPLE GYPSUM BOARD LAYERS.
- INNER LAYERS MUST BE TAPED BUT NOT SANDED.
- INSTALL GYPSUM BOARD WITH NO JOINTS GREATER THAN 6mm.
- TAPE ALL GYPSUM BOARD JOINTS WITH DRYWALL COMPOUND.
- FIRE-STOP CAULK OUTSIDE LAYER OF GYPSUM BOARD OF ALL RATED STEEL STUD PARTITIONS AT TOP AND BOTTOM AND ALL PENETRATIONS.
- ACOUSTIC CAULK OUTSIDE LAYER OF GYPSUM BOARD OF ALL NON-RATED STEEL STUD PARTITIONS AT ALL PENETRATIONS.
- CAULKING OF ANY GAP OVER 6 mm MUST BE OVER ROD BACKUP.
- LOCATE ELECTRICAL BOXES ON OPPOSING FACES OF THE WALL IN SEPARATE STUD CAVITY.
- TRIM AND EXTEND THERMAL AND ACOUSTIC BATT INSULATION CONTINUOUSLY BEHIND AND AROUND ALL ELECTRICAL BOXES.
- PROVIDE SLOTTED TOP TRACK DEFLECTION HEAD AT T/O ALL STEEL STUD WALL AND PARTITION ASSEMBLIES.
- PROVIDE 20mm DEFLECTION ALLOWANCE AT T/O ALL CONCRETE BLOCK PARTITIONS.
- PACK VOID AT T/O OF ALL FIRE RATED CONCRETE BLOCK PARTITIONS WITH MINERAL WOOL AND SEAL IN PLACE WITH FIRE-STOP CAULK.
- SEAL VOID AT T/O OF ALL NON-RATED CONCRETE BLOCK PARTITIONS WITH ACOUSTIC CAULK OVER BACKER ROD.
- PROVIDE MAX. 0.50mm METAL STUDS FOR ALL INTERIOR PARTITIONS. NOTIFY ARCHITECT WHERE HEAVIER GAUGE IS NEEDED TO MEET DEFLECTIONS REQUIREMENT.

- STUD WALL REINFORCEMENT:**
- SECURE 19mm VENEER CORE PLYWOOD BLOCKING TO STUDS WITHIN THE WALL CAVITY AS REQUIRED TO ANCHOR THE FUTURE INSTALLATION OF GRAB BARS LOCATED IN ALL SUITE WASHROOMS AND INSTALL BLOCKING TO ACCOMMODATE THE FOLLOWING GRAB BAR CONFIGURATIONS:
 - 700mm TO 1500mm AFF ON ALL WALLS ADJACENT TO A WATER CLOSET EXTENDING 400mm TO 1200mm FROM WALL BEHIND THE WATER CLOSET
 - 800mm LONG x 200mm HIGH CENTERED ON THE WALL BEHIND THE WATER CLOSET AND 150mm ABOVE THE TANK
 - 850mm AFF x 200mm HIGH FULL LENGTH OF WALL OPPOSITE THE ENTRANCE TO THE SHOWER

- GRIND HIGH-POINTS AND SKIM-COAT ALL EXPOSED CONCRETE SURFACES WITH DRYWALL COMPOUND.
- MISCELLANEOUS METAL:**
 - CONTINUOUSLY WELD ALL STEEL COMPONENTS
 - FILL AND GRIND ALL STEEL CONNECTIONS SMOOTH
 - FINISH ALL EXPOSED STEEL SURFACES WITH PAINT

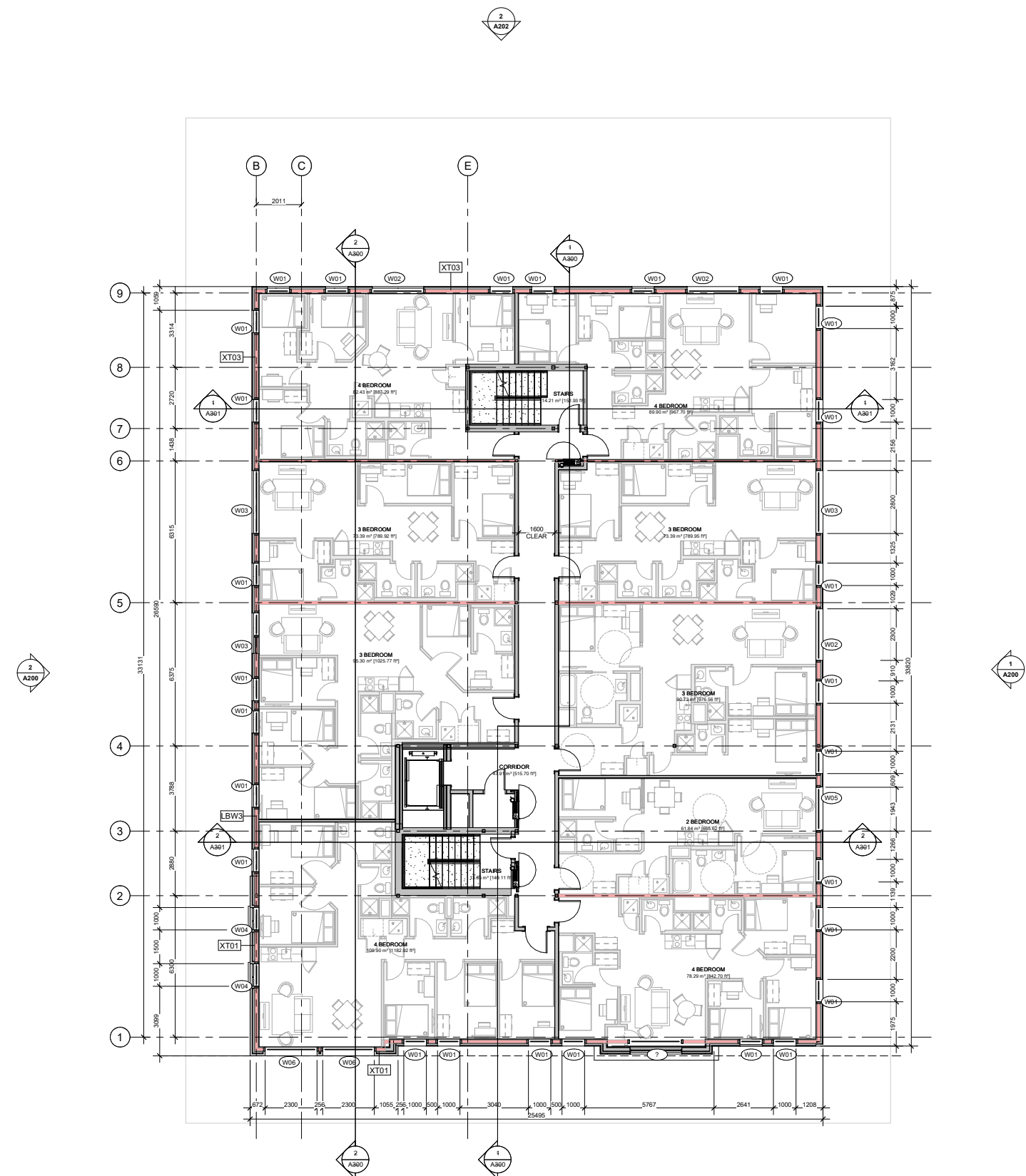
- USE MOISTURE RESISTANT GYPSUM BOARD ON ALL WASHROOM AND HIGH HUMIDITY AREA CEILINGS AND WALLS.
- USE GYPSUM TILE BACKER BOARD ON ALL SHOWER WALLS.
- FIRE-CAULK PERIMETER OF ALL ACOUSTIC GYPSUM BOARD PARTITIONS.

- WHERE OUTLET BOXES ARE INSTALLED BACK TO BACK, PACK CAVITY AROUND BOTH OUTLET BOXES AND SECURE ONE LAYER OF DRYWALL IN THE AIR-SPACE TO THE BACK SIDE OF ONE ROW OF STUDS. EXTEND THESE MEASURES FOR A MINIMUM RADIUS OF 600mm FROM CENTER OF EACH OUTLET BOX. IN ADDITION, PROVIDE PUTTY PADS TO ALL ELECTRICAL BOXES WHERE MORE THAN ONE ELECTRICAL BOX IS INSTALLED IN A SINGLE STUD CAVITY.
- SHIM AS REQUIRED TO PLUMB WALLS FOR ALL FURRING CHANNELS. ADJUST OTHER DIMENSION ACCORDINGLY.

- WHERE BATHTUBS ABUT A FIRE SEPARATION APPLY AN ADDITIONAL LAYER OF WATER RESISTANT GYPSUM BOARD TO PROVIDE SUBSTRATE FOR FINISHES ABOVE BATHTUB.

- TYPICAL SUITE AND CORRIDOR DEMISING WALL ACOUSTIC REQUIREMENTS:**
 - CONTINUE DEMISING WALL BETWEEN SUITES THROUGH EXTERIOR WALL STUD CAVITY TO INSIDE FACE OF EXTERIOR SHEATHING AND FIRE CAULK
 - SUITE SIDE OF CORRIDOR DEMISING WALL GYPSUM TO BE DISCONTINUOUS AT JUNCTION WITH SUITE DEMISING WALL
 - STAGGER GYPSUM LAYERS AT JOINTS

- ACCESS LADDERS MUST CONFORM TO THE REQUIREMENTS OF ENGINEERING DATA SHEET 2-04, ISSUED BY THE MINISTRY OF LABOUR.



1 LEVEL 4
1:100

KEY PLAN / PLAN CLÉ :



CLIENT :



revision	description	date
1.6	Mechanical Co-Ordination	24-08-21
1.5	ISSUED FOR 66 %	24-07-12
1.4	ISSUED FOR SPA	24-06-05
1.3	ISSUED FOR SPA	24-02-15
1.1	ISSUED FOR 33%	23-07-19

PROJECT NAME / NOM DU PROJET :

193 Notice

193 Notice St. Nepean, ON K2G 2Y5

DRAWING NAME / NOM DU DESSIN :

FLOOR LEVEL 4

DRAWING INFORMATION / INFORMATION DU DESSIN :

PROJECT NO. / NO. DE PROJET : **23058**
DATE : **10/08/19**
DRAWN BY / DESSINÉ PAR : **SB**
REVIEWED BY / VÉRIFIÉ PAR : **LG**
SCALE / ÉCHELLE : **As indicated**
PROJECT PHASE / PHASE DU PROJET : **2**
DWG NO. / NO. DESSIN :

A104

REVISION NO. / NO. DE RÉVISION : 1.6

NOT FOR CONSTRUCTION
PAS POUR CONSTRUCTION

This document and all information herein is confidential and the intellectual property of Rossmann Architecture Inc. It is disclosed in confidence on terms that it will not be disclosed to any third party, used, sold, loaned, licensed, or reproduced in whole or in any part in any manner or form for manufacturing, tendering or for any other purpose without the written permission of Rossmann Architecture Inc. The copyright is retained by Rossmann Architecture Inc.

Ce document, ainsi que tous les renseignements qu'il contient, est la propriété de Rossmann Architecture Inc. Il est divulgué en confiance sous les termes qu'il ne sera pas divulgué à aucun tiers, utilisé, vendu, prêté, licencié ou reproduit en tout ou en partie d'aucune manière pour la manufacture, soumission ou pour autres fins sans la permission écrite de Rossmann Architecture Inc. Le droit d'auteur est réservé par Rossmann Architecture Inc.

PROJECT TEAM / ÉQUIPE DU PROJET :

JAMES B. LENNOX & ASSOCIATES INC.
LANDSCAPE ARCHITECTS
3332 CHELSEA AVE. OTTAWA, ONT. K1H 8H9 Tel: (613) 733-1169
OTTAWA K2H 5A5 Fax: (613) 733-3302

D.B. GRAY ENGINEERING INC.
191 LONG POINT CIRCLE, OTTAWA, ONT. K1H 8H9 Tel: (613) 425-8344
OTTAWA K1H 8H9 Fax: (613) 425-8344

GGI
1515 BOULEVARD LA GARDIE, GATINEAU, QUEBEC Q1R 5G1 Tel: (819) 243-4414
GGI.com

LCA
15 RUE DE VALCOURT, ENTRE 6, GATINEAU, QUEBEC Q1R 5H1 Tel: (819) 243-4474
lca@ggipr.ca

KEY PLAN / PLAN CLÉ :



CLIENT :



revision	description	date
1.6	Mechanical Co-Ordination	24-08-21
1.5	ISSUED FOR 66 %	24-07-12
1.4	ISSUED FOR SPA	24-06-05
1.3	ISSUED FOR SPA	24-02-15
1.1	ISSUED FOR 33%	23-07-19

PROJECT NAME / NOM DU PROJET :

193 Notice

193 Notice St. Nepean, ON K2G 2Y5

DRAWING NAME / NOM DU DESSIN :

ROOF PLAN

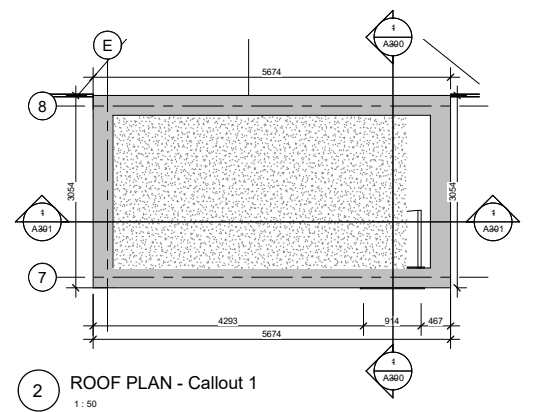
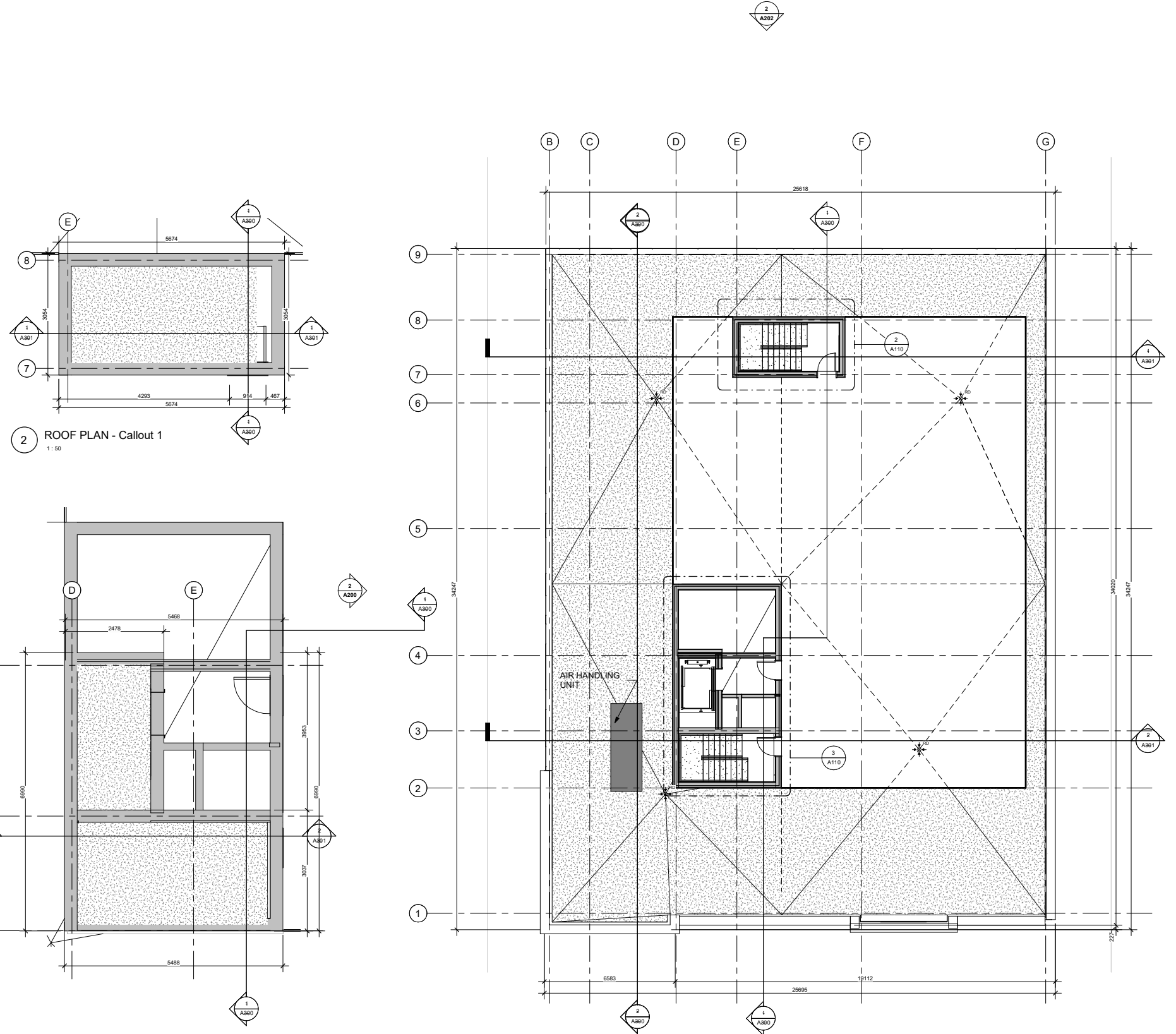
DRAWING INFORMATION / INFORMATION DU DESSIN :

PROJECT NO. / NO. DE PROJET :	23058
DATE :	03/18/22
DRAWN BY / DESSINÉ PAR :	SB
REVIEWED BY / VÉRIFIÉ PAR :	LG
SCALE / ÉCHELLE :	As indicated
PROJECT PHASE / PHASE DU PROJET :	2
DWG NO. / NO. DESSIN :	A110

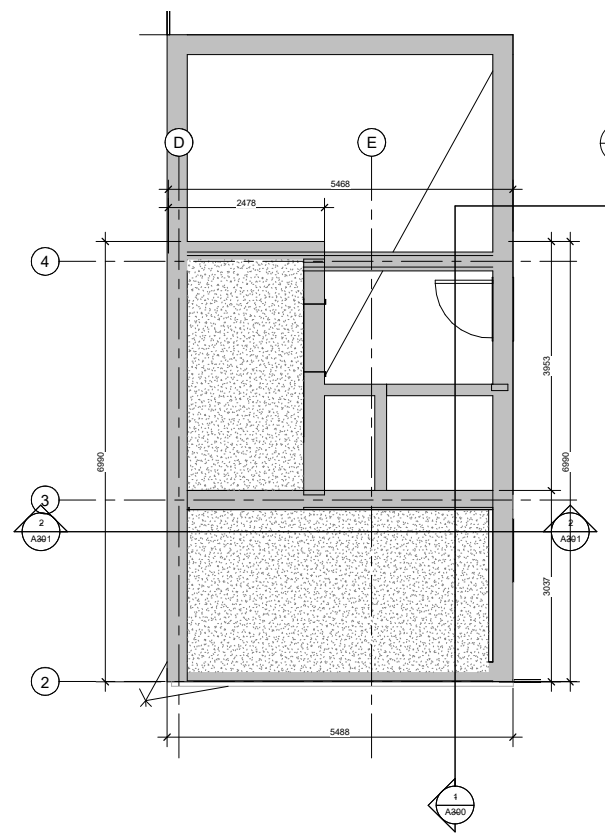
REVISION NO. / NO. DE RÉVISION : 1.6

TYPICAL DRAWINGS NOTES:

- EXTEND ALL PARTITIONS TO UIS DECK OR SLAB U.N.
- STAGGER ALL JOINTS OF MULTIPLE GYPSUM BOARD LAYERS.
- INNER LAYERS MUST BE TAPED BUT NOT SANDED.
- INSTALL GYPSUM BOARD WITH NO JOINTS GREATER THAN 6mm.
- TAPE ALL GYPSUM BOARD JOINTS WITH DRYWALL COMPOUND.
- FIRE-STOP CAULK OUTSIDE LAYER OF GYPSUM BOARD OF ALL RATED STEEL STUD PARTITIONS AT TOP AND BOTTOM AND ALL PENETRATIONS.
- ACOUSTIC CAULK OUTSIDE LAYER OF GYPSUM BOARD OF ALL NON-RATED STEEL STUD PARTITIONS AT ALL PENETRATIONS.
- CAULKING OF ANY GAP OVER 6 mm MUST BE OVER ROD BACKUP.
- LOCATE ELECTRICAL BOXES ON OPPOSING FACES OF THE WALL IN SEPARATE STUD CAVITY.
- TRIM AND EXTEND THERMAL AND ACOUSTIC BATT INSULATION CONTINUOUSLY BEHIND AND AROUND ALL ELECTRICAL BOXES.
- PROVIDE SLOTTED TOP TRACK DEFLECTION HEAD AT T/O ALL STEEL STUD WALL AND PARTITION ASSEMBLIES.
- PROVIDE 20mm DEFLECTION ALLOWANCE AT T/O ALL CONCRETE BLOCK PARTITIONS.
- PACK VOID AT T/O OF ALL FIRE RATED CONCRETE BLOCK PARTITIONS WITH MINERAL WOOL AND SEAL IN PLACE WITH FIRE-STOP CAULK.
- SEAL VOID AT T/O OF ALL NON-RATED CONCRETE BLOCK PARTITIONS WITH ACOUSTIC CAULK OVER BACKER ROD.
- PROVIDE MAX. 0.50mm METAL STUDS FOR ALL INTERIOR PARTITIONS. NOTIFY ARCHITECT WHERE HEAVIER GAUGE IS NEEDED TO MEET DEFLECTIONS REQUIREMENT.
- STUD WALL REINFORCEMENT:**
 - SECURE 19mm VENEER CORE PLYWOOD BLOCKING TO STUDS WITHIN THE WALL CAVITY AS REQUIRED TO ANCHOR THE FUTURE INSTALLATION OF GRAB BARS LOCATED IN ALL SUITE WASHROOMS AND INSTALL BLOCKING TO ACCOMMODATE THE FOLLOWING GRAB BAR CONFIGURATIONS:
 - 700mm TO 1500mm AFF ON ALL WALLS ADJACENT TO A WATER CLOSET EXTENDING 400mm TO 1200mm FROM WALL BEHIND THE WATER CLOSET
 - 800mm LONG x 200mm HIGH CENTERED ON THE WALL BEHIND THE WATER CLOSET AND 150mm ABOVE THE TANK
 - 850mm AFF x 200mm HIGH FULL LENGTH OF WALL OPPOSITE THE ENTRANCE TO THE SHOWER
- GRIND HIGH-POINTS AND SKIM-COAT ALL EXPOSED CONCRETE SURFACES WITH DRYWALL COMPOUND.
- MISCELLANEOUS METAL:**
 - CONTINUOUSLY WELD ALL STEEL COMPONENTS
 - FILL AND GRIND ALL STEEL CONNECTIONS SMOOTH
 - FINISH ALL EXPOSED STEEL SURFACES WITH PAINT
- USE MOISTURE RESISTANT GYPSUM BOARD ON ALL WASHROOM AND HIGH HUMIDITY AREA CEILING AND WALLS.
- USE GYPSUM TILE BACKER BOARD ON ALL SHOWER WALLS.
- FIRE-CAULK PERIMETER OF ALL ACOUSTIC GYPSUM BOARD PARTITIONS.
- WHERE OUTLET BOXES ARE INSTALLED BACK TO BACK, PACK CAVITY AROUND BOTH OUTLET BOXES AND SECURE ONE LAYER OF DRYWALL IN THE AIR-SPACE TO THE BACK SIDE OF ONE ROW OF STUDS. EXTEND THESE MEASURES FOR A MINIMUM RADIUS OF 600mm FROM CENTER OF EACH OUTLET BOX. IN ADDITION, PROVIDE PUTTY PADS TO ALL ELECTRICAL BOXES WHERE MORE THAN ONE ELECTRICAL BOX IS INSTALLED IN A SINGLE STUD CAVITY.
- SHIM AS REQUIRED TO PLUMB WALLS FOR ALL FURRING CHANNELS. ADJUST OTHER DIMENSION ACCORDINGLY.
- WHERE BATHTUBS ABUT A FIRE SEPARATION APPLY AN ADDITIONAL LAYER OF WATER RESISTANT GYPSUM BOARD TO PROVIDE SUBSTRATE FOR FINISHES ABOVE BATHTUB.
- TYPICAL SUITE AND CORRIDOR DEMISING WALL ACOUSTIC REQUIREMENTS:**
 - CONTINUE DEMISING WALL BETWEEN SUITES THROUGH EXTERIOR WALL STUD CAVITY TO INSIDE FACE OF EXTERIOR SHEATHING AND FIRE CAULK
 - SUITE SIDE OF CORRIDOR DEMISING WALL GYPSUM TO BE DISCONTINUOUS AT JUNCTION WITH SUITE DEMISING WALL
 - STAGGER GYPSUM LAYERS AT JOINTS
- ACCESS LADDERS MUST CONFORM TO THE REQUIREMENTS OF ENGINEERING DATA SHEET 2-04, ISSUED BY THE MINISTRY OF LABOUR.



2 ROOF PLAN - Callout 1
1:50



3 ROOF PLAN - Callout 2
1:50

1 ROOF PLAN
1:100

SEAN MOORE MCIP, RPP
MANAGER, DEVELOPMENT REVIEW - WEST
PLANNING, INFRASTRUCTURE & ECONOMIC
DEVELOPMENT DEPARTMENT, CITY OF OTTAWA



2 WEST ELEVATION
 1:100



1 EAST ELEVATION
 1:100

TYPICAL DRAWINGS NOTES:

- EXTEND ALL PARTITIONS TO UIS DECK OR SLAB U.N.
- STAGGER ALL JOINTS OF MULTIPLE GYPSUM BOARD LAYERS.
- INNER LAYERS MUST BE TAPED BUT NOT SANDED.
- INSTALL GYPSUM BOARD WITH NO JOINTS GREATER THAN 6mm.
- TAPE ALL GYPSUM BOARD JOINTS WITH DRYWALL COMPOUND.
- FIRE-STOP CAULK OUTSIDE LAYER OF GYPSUM BOARD OF ALL RATED STEEL STUD PARTITIONS AT TOP AND BOTTOM AND ALL PENETRATIONS.
- ACQUSTIC CAULK OUTSIDE LAYER OF GYPSUM BOARD OF ALL NON-RATED STEEL STUD PARTITIONS AT ALL PENETRATIONS.
- CAULKING OF ANY GAP OVER 6 mm MUST BE OVER ROD BACKUP.
- LOCATE ELECTRICAL BOXES ON OPPOSING FACES OF THE WALL IN SEPARATE STUD CAVITY.
- TRIM AND EXTEND THERMAL AND ACOUSTIC BATT INSULATION CONTINUOUSLY BEHIND AND AROUND ALL ELECTRICAL BOXES.
- PROVIDE SLOTTED TOP TRACK DEFLECTION HEAD AT T/O ALL STEEL STUD WALL AND PARTITION ASSEMBLIES.
- PROVIDE 20mm DEFLECTION ALLOWANCE AT T/O ALL CONCRETE BLOCK PARTITIONS.
- PACK VOID AT T/O OF ALL FIRE RATED CONCRETE BLOCK PARTITIONS WITH MINERAL WOOL AND SEAL IN PLACE WITH FIRE-STOP CAULK.
- SEAL VOID AT T/O OF ALL NON-RATED CONCRETE BLOCK PARTITIONS WITH ACOUSTIC CAULK OVER BACKER ROD.
- PROVIDE MAX. 0.50mm METAL STUDS FOR ALL INTERIOR PARTITIONS. NOTIFY ARCHITECT WHERE HEAVIER GAUGE IS NEEDED TO MEET DEFLECTIONS REQUIREMENT.
- STUD WALL REINFORCEMENT:
 - SECURE 19mm VENEER CORE PLYWOOD BLOCKING TO STUDS WITHIN THE WALL CAVITY AS REQUIRED TO ANCHOR THE FUTURE INSTALLATION OF GRAB BARS LOCATED IN ALL SUITE WASHROOMS AND INSTALL BLOCKING TO ACCOMMODATE THE FOLLOWING GRAB BAR CONFIGURATIONS:
 - 700mm TO 1500mm AFF ON ALL WALLS ADJACENT TO A WATER CLOSET EXTENDING 400mm TO 1200mm FROM WALL BEHIND THE WATER CLOSET
 - 800mm LONG x 200mm HIGH CENTERED ON THE WALL BEHIND THE WATER CLOSET AND 150mm ABOVE THE TANK
 - 850mm AFF x 200mm HIGH FULL LENGTH OF WALL OPPOSITE THE ENTRANCE TO THE SHOWER
- GRIND HIGH-POINTS AND SKIM-COAT ALL EXPOSED CONCRETE SURFACES WITH DRYWALL COMPOUND.
- MISCELLANEOUS METAL:
 - CONTINUOUSLY WELD ALL STEEL COMPONENTS
 - FILL AND GRIND ALL STEEL CONNECTIONS SMOOTH
 - FINISH ALL EXPOSED STEEL SURFACES WITH PAINT
- USE MOISTURE RESISTANT GYPSUM BOARD ON ALL WASHROOM AND HIGH HUMIDITY AREA CEILINGS AND WALLS.
- USE GYPSUM TILE BACKER BOARD ON ALL SHOWER WALLS.
- FIRE-CAULK PERIMETER OF ALL ACOUSTIC GYPSUM BOARD PARTITIONS.
- WHERE OUTLET BOXES ARE INSTALLED BACK TO BACK, PACK CAVITY AROUND BOTH OUTLET BOXES AND SECURE ONE LAYER OF DRYWALL IN THE AIR-SPACE TO THE BACK SIDE OF ONE ROW OF STUDS. EXTEND THESE MEASURES FOR A MINIMUM RADIUS OF 600mm FROM CENTER OF EACH OUTLET BOX. IN ADDITION, PROVIDE PUTTY PADS TO ALL ELECTRICAL BOXES WHERE MORE THAN ONE ELECTRICAL BOX IS INSTALLED IN A SINGLE STUD CAVITY.
- SHIM AS REQUIRED TO PLUMB WALLS FOR ALL FURRING CHANNELS. ADJUST OTHER DIMENSION ACCORDINGLY.
- WHERE BATHTUBS ABUT A FIRE SEPARATION APPLY AN ADDITIONAL LAYER OF WATER RESISTANT GYPSUM BOARD TO PROVIDE SUBSTRATE FOR FINISHES ABOVE BATHTUB.
- TYPICAL SUITE AND CORRIDOR DEMISING WALL ACOUSTIC REQUIREMENTS:
 - CONTINUE DEMISING WALL BETWEEN SUITES THROUGH EXTERIOR WALL STUD CAVITY TO INSIDE FACE OF EXTERIOR SHEATHING AND FIRE CAULK
 - SUITE SIDE OF CORRIDOR DEMISING WALL GYPSUM TO BE DISCONTINUOUS AT JUNCTION WITH SUITE DEMISING WALL
 - STAGGER GYPSUM LAYERS AT JOINTS
- ACCESS LADDERS MUST CONFORM TO THE REQUIREMENTS OF ENGINEERING DATA SHEET 2-04, ISSUED BY THE MINISTRY OF LABOUR.

ELEVATION LEGEND

- METAL PANEL LIGHT BEIGE (MP-01)
- FIBER CEMENT CLADDING BLACK (FC-01)
- BRICK VENEER SEASHELL (BR-01)
- FIBER CEMENT CLADDING NIGHT GREY (FC-02)
- METAL PANEL BLACK (MP-02)
- CONCRETE SMOOTH (CR-01)

ROSSMANN ARCHITECTURE

88 Saint-Joseph Boulevard, Gatineau QC J8Y 3W5
 Tel : 819-600-1555

NOT TO CONSTRUCTION / PAS POUR CONSTRUCTION

This document and all information herein is confidential and the intellectual property of Rossmann Architecture Inc. It is disclosed in confidence on terms that it will not be disclosed to any third party, used, sold, loaned, licensed, or reproduced in whole or in any part in any manner or form for manufacturing, tending or for any other purpose without the written permission of Rossmann Architecture Inc. The copyright is retained by Rossmann Architecture Inc.

Ce document, ainsi que tous les renseignements qu'il contient, sont la propriété de Rossmann Architecture Inc. Il est divulgué en confiance sous les termes qu'il ne sera pas divulgué à aucun tiers, utilisé, vendu, prêté, licencié ou reproduit en tout ou en partie d'aucune manière pour la manufacture, l'impression ou pour autre fin sans la permission écrite de Rossmann Architecture Inc. Le droit d'auteur est réservé par Rossmann Architecture Inc.

PROJECT TEAM / ÉQUIPE DU PROJET :

JAMES B. LENNOX & ASSOCIATES INC.
LANDSCAPE ARCHITECTS
 3332 CARLING AVE. OTTAWA, ONT. M2H 4P7 Tel: (613) 723-1168
 OTTAWA K2H 5A3 Fax: (613) 343-3342

D.B. GRAY ENGINEERING INC.
 700 LONG POINT CIRCUIT, OTTAWA, ONTARIO K2H 1K3 Tel: (613) 425-8844
 #grays@dbgrayengineering.com

GGI
 605, BOULEVARD DE LA GAZETTE, GATINEAU, QUÉBEC QC J8T 9G1 Tel: (819) 243-4414
 GGI.com

LCA
 15 RUE DE VALCOURT, GATINEAU, QUÉBEC QC J8T 9H1 Tel: (819) 243-4414
 #lca@lcapro.ca

KEY PLAN / PLAN CLÉ :



CLIENT :



revision	description	date
1.5	ISSUED FOR 66 %	24-07-12
1.4	ISSUED FOR SPA	24-06-05
1.3	ISSUED FOR SPA	24-02-15
1.1	ISSUED FOR 33%	23-07-19

PROJECT NAME / NOM DU PROJET :

193 Notice

193 Notice St, Nepean, ON K2G 2Y5

DRAWING NAME / NOM DU DESSIN :

ELEVATION - EAST & WEST

DRAWING INFORMATION / INFORMATION DU DESSIN :

PROJECT NO. / NO. DE PROJET : **23058**

DATE : **10/23/19**

DRAWN BY / DESSINÉ PAR : **SB**

REVIEWED BY / VÉRIFIÉ PAR : **LG**

SCALE / ÉCHELLE : **As indicated**

PROJECT PHASE / PHASE DU PROJET : **2**

DWG NO. / NO. DESSIN :

A200

REVISION NO. / NO. DE RÉVISION : **1.5**

SEAN MOORE MCIP, RPP
MANAGER, DEVELOPMENT REVIEW - WEST
PLANNING, INFRASTRUCTURE & ECONOMIC
DEVELOPMENT DEPARTMENT, CITY OF OTTAWA



1 SOUTH ELEVATION
1:100



2 NORTH ELEVATION
1:100

TYPICAL DRAWINGS NOTES:

- EXTEND ALL PARTITIONS TO UIS DECK OR SLAB U.N.
- STAGGER ALL JOINTS OF MULTIPLE GYPSUM BOARD LAYERS.
- INNER LAYERS MUST BE TAPED BUT NOT SANDED.
- INSTALL GYPSUM BOARD WITH NO JOINTS GREATER THAN 6mm.
- TAPE ALL GYPSUM BOARD JOINTS WITH DRYWALL COMPOUND.
- FIRE-STOP CAULK OUTSIDE LAYER OF GYPSUM BOARD OF ALL RATED STEEL STUD PARTITIONS AT TOP AND BOTTOM AND ALL PENETRATIONS.
- ACQUSTIC CAULK OUTSIDE LAYER OF GYPSUM BOARD OF ALL NON-RATED STEEL STUD PARTITIONS AT ALL PENETRATIONS.
- CAULKING OF ANY GAP OVER 6 mm MUST BE OVER ROD BACKUP.
- LOCATE ELECTRICAL BOXES ON OPPOSING FACES OF THE WALL IN SEPARATE STUD CAVITY.
- TRIM AND EXTEND THERMAL AND ACOUSTIC BATT INSULATION CONTINUOUSLY BEHIND AND AROUND ALL ELECTRICAL BOXES.
- PROVIDE SLOTTED TOP TRACK DEFLECTION HEAD AT T/O ALL STEEL STUD WALL AND PARTITION ASSEMBLIES.
- PROVIDE 20mm DEFLECTION ALLOWANCE AT T/O ALL CONCRETE BLOCK PARTITIONS.
- PACK VOID AT T/O OF ALL FIRE RATED CONCRETE BLOCK PARTITIONS WITH MINERAL WOOL AND SEAL IN PLACE WITH FIRE-STOP CAULK.
- SEAL VOID AT T/O OF ALL NON-RATED CONCRETE BLOCK PARTITIONS WITH ACOUSTIC CAULK OVER BACKER ROD.
- PROVIDE MAX. 0.50mm METAL STUDS FOR ALL INTERIOR PARTITIONS. NOTIFY ARCHITECT WHERE HEAVIER GAUGE IS NEEDED TO MEET DEFLECTIONS REQUIREMENT.
- STUD WALL REINFORCEMENT:**
 SECURE 19mm VENEER CORE PLYWOOD BLOCKING TO STUDS WITH THE WALL CAVITY AS REQUIRED TO ANCHOR THE FUTURE INSTALLATION OF GRAB BARS LOCATED IN ALL SUITE WASHROOMS AND INSTALL BLOCKING TO ACCOMMODATE THE FOLLOWING GRAB BAR CONFIGURATIONS:
 - 700mm x 1500mm AFF ON ALL WALLS ADJACENT TO A WATER CLOSET EXTENDING 400mm TO 1200mm FROM WALL BEHIND THE WATER CLOSET
 - 800mm LONG x 200mm HIGH CENTERED ON THE WALL BEHIND THE WATER CLOSET AND 150mm ABOVE THE TANK
 - 850mm AFF x 200mm HIGH FULL LENGTH OF WALL OPPOSITE THE ENTRANCE TO THE SHOWER
- GRIND HIGH-POINTS AND SKIM-COAT ALL EXPOSED CONCRETE SURFACES WITH DRYWALL COMPOUND.
- MISCELLANEOUS METAL:**
 - CONTINUOUSLY WELD ALL STEEL COMPONENTS
 - FILL AND GRIND ALL STEEL CONNECTIONS SMOOTH
 - FINISH ALL EXPOSED STEEL SURFACES WITH PAINT
- USE MOISTURE RESISTANT GYPSUM BOARD ON ALL WASHROOM AND HIGH HUMIDITY AREA CEILINGS AND WALLS.
- USE GYPSUM TILE BACKER BOARD ON ALL SHOWER WALLS.
- FIRE-CAULK PERIMETER OF ALL ACOUSTIC GYPSUM BOARD PARTITIONS.
- WHERE OUTLET BOXES ARE INSTALLED BACK TO BACK, PACK CAVITY AROUND BOTH OUTLET BOXES AND SECURE ONE LAYER OF DRYWALL IN THE AIR-SPACE TO THE BACK SIDE OF ONE ROW OF STUDS. EXTEND THESE MEASURES FOR A MINIMUM RADIUS OF 600mm FROM CENTER OF EACH OUTLET BOX. IN ADDITION, PROVIDE PUTTY PADS TO ALL ELECTRICAL BOXES WHERE MORE THAN ONE ELECTRICAL BOX IS INSTALLED IN A SINGLE STUD CAVITY.
- SHIM AS REQUIRED TO PLUMB WALLS FOR ALL FURRING CHANNELS. ADJUST OTHER DIMENSION ACCORDINGLY.
- WHERE BATHTUBS ABUT A FIRE SEPARATION APPLY AN ADDITIONAL LAYER OF WATER RESISTANT GYPSUM BOARD TO PROVIDE SUBSTRATE FOR FINISHES ABOVE BATHTUB.
- TYPICAL SUITE AND CORRIDOR DEMISING WALL ACOUSTIC REQUIREMENTS:**
 - CONTINUE DEMISING WALL BETWEEN SUITES THROUGH EXTERIOR WALL STUD CAVITY TO INSIDE FACE OF EXTERIOR SHEATHING AND FIRE CAULK
 - SUITE SIDE OF CORRIDOR DEMISING WALL GYPSUM TO BE DISCONTINUOUS AT JUNCTION WITH SUITE DEMISING WALL
 - STAGGER GYPSUM LAYERS AT JOINTS
- ACCESS LADDERS MUST CONFORM TO THE REQUIREMENTS OF ENGINEERING DATA SHEET 2-04, ISSUED BY THE MINISTRY OF LABOUR.

ELEVATION LEGEND

MP-01	METAL PANEL LIGHT BEIGE
FC-01	FIBER CEMENT CLADDING BLACK
BR-01	BRICK VENEER SEASHELL
FC-02	FIBER CEMENT CLADDING NIGHT GREY
MP-02	METAL PANEL BLACK
CR-01	CONCRETE SMOOTH



88 Saint-Joseph Boulevard, Gatineau QC J8Y 3W5
 Tel : 819-600-1555

NOT FOR CONSTRUCTION AND FOR CONSULTATION

This document and all information herein is confidential and the intellectual property of Rossmann Architecture Inc. It is disclosed in confidence on terms that it will not be disclosed to any third party, used, sold, loaned, licensed, or reproduced in whole or in any part in any manner or form for manufacturing, tending or for any other purpose without the written permission of Rossmann Architecture Inc. The copyright is retained by Rossmann Architecture Inc.

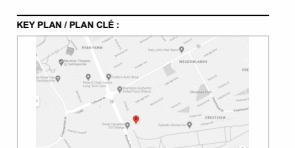
Ce document, ainsi que tous les renseignements qu'il contient, est la propriété de Rossmann Architecture Inc. Il est divulgué en confiance sous les termes qu'il ne sera pas divulgué à aucun tiers sans la permission écrite de Rossmann Architecture Inc. Le droit d'auteur est réservé par Rossmann Architecture Inc.

PROJECT TEAM / ÉQUIPE DU PROJET :
JAMES B. LENNOX & ASSOCIATES INC.
LANDSCAPE ARCHITECTS
 3332 CARLING AVE. OTTAWA, ONTARIO K2H 5A5 Tel: (613) 723-1168 Fax: (613) 723-3942

D.B. GRAY ENGINEERING INC.
 700 LONG POINT CIRCLE, OTTAWA, ONTARIO K2H 1K3 Tel: (613) 425-8044 Fax: (613) 425-8044 Email: dgray@dbgrayengineering.com

ODI
 605, BOULEVARD LA GAYETTE, GATINEAU, QUÉBEC QC J8T 9G1 Tel: (819) 243-4414 Fax: (819) 243-4414 Email: odi@odi.ca

LCA
 15 RUE DE VALCOURT, QUÉBEC, QUÉBEC QC G1R 1H1 Tel: (514) 243-4474 Fax: (514) 243-4474 Email: info@lca.ca



revision	description	date
1.5	ISSUED FOR 66 %	24-07-12
1.4	ISSUED FOR SPA	24-06-05
1.3	ISSUED FOR SPA	24-02-15
1.1	ISSUED FOR 33 %	23-07-19

PROJECT NAME / NOM DU PROJET :

193 Notice
 193 Notice St, Nepean, ON K2G 2Y5

DRAWING NAME / NOM DU DESSIN :
ELEVATION - NORTH & SOUTH

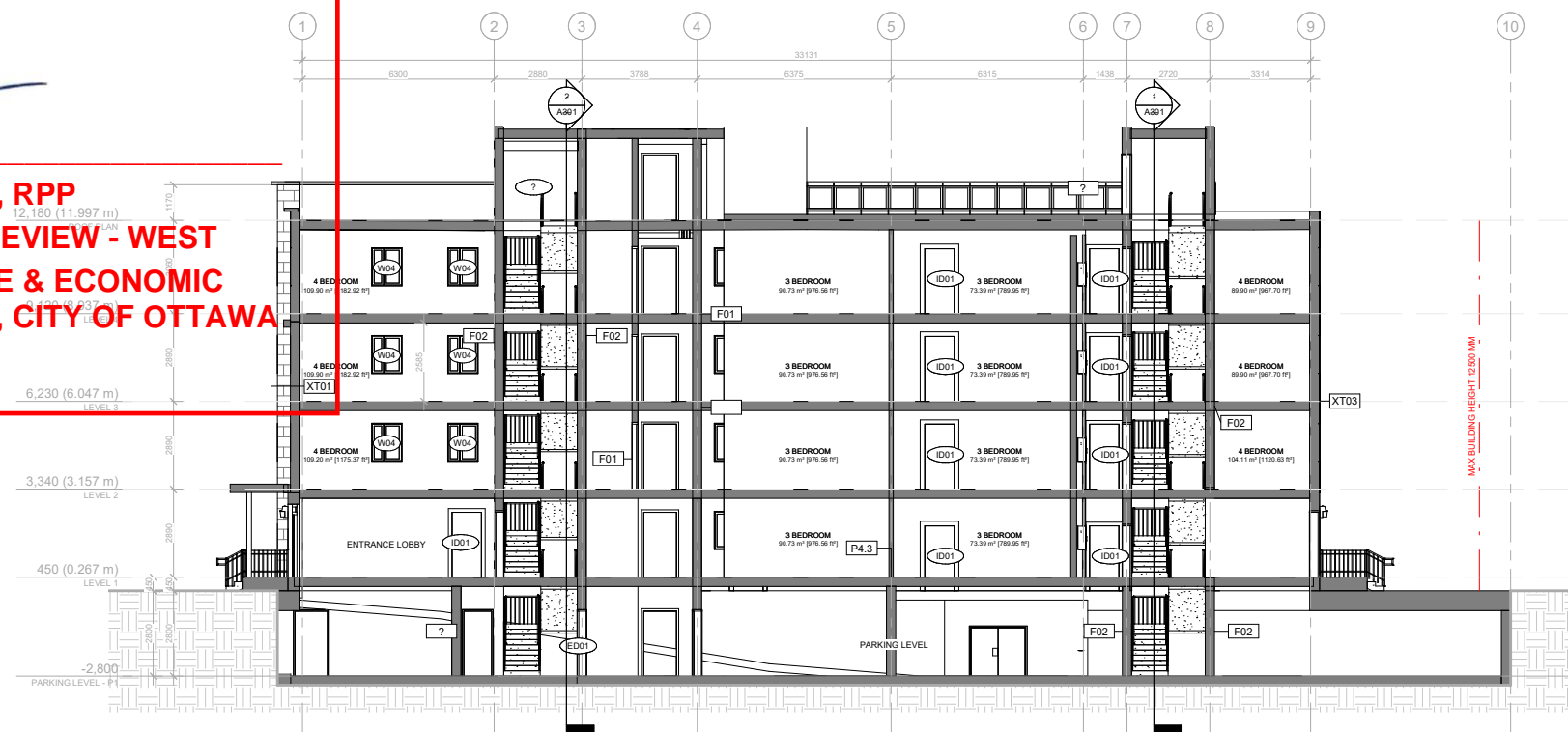
DRAWING INFORMATION / INFORMATION DU DESSIN :

PROJECT NO. / NO. DE PROJET : **23058**
 DATE : **23/06/05**
 DRAWN BY / DESSINÉ PAR : **SB**
 REVIEWED BY / VÉRIFIÉ PAR : **LG**
 SCALE / ÉCHELLE : **As indicated**
 PROJECT PHASE / PHASE DU PROJET : **2**
 DWG NO. / NO. DESSIN :

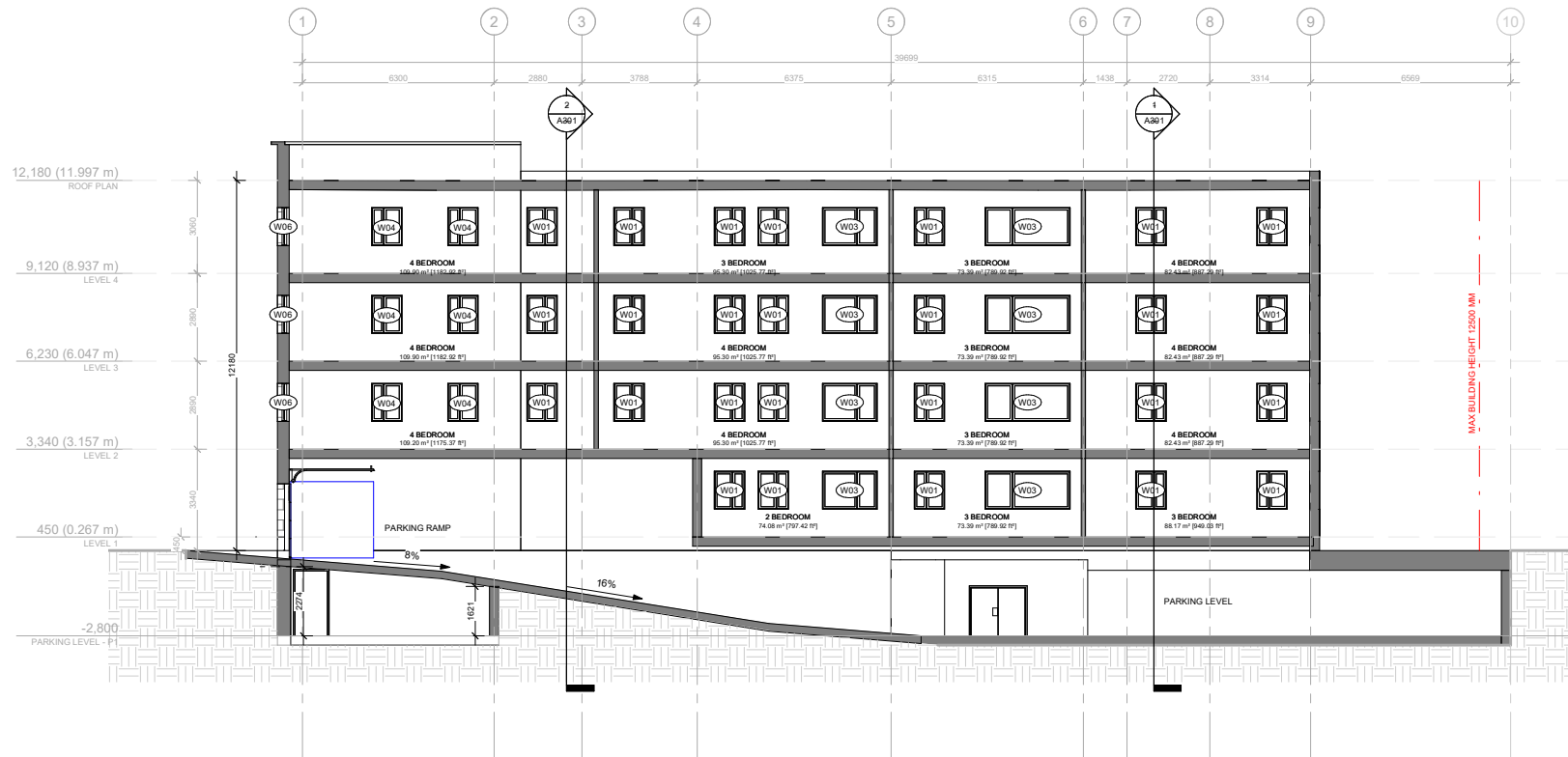
A202

REVISION NO. / NO. DE RÉVISION : **1.5**

SEAN MOORE MCIP, RPP
MANAGER, DEVELOPMENT REVIEW - WEST
PLANNING, INFRASTRUCTURE & ECONOMIC
DEVELOPMENT DEPARTMENT, CITY OF OTTAWA



1 SECTION AA
1:100



2 SECTION BB
1:100

TYPICAL DRAWINGS NOTES:

- EXTEND ALL PARTITIONS TO UIS DECK OR SLAB U.N.
- STAGGER ALL JOINTS OF MULTIPLE GYPSUM BOARD LAYERS.
- INNER LAYERS MUST BE TAPED BUT NOT SANDED.
- INSTALL GYPSUM BOARD WITH NO JOINTS GREATER THAN 6mm.
- TAPE ALL GYPSUM BOARD JOINTS WITH DRYWALL COMPOUND.
- FIRE-STOP CAULK OUTSIDE LAYER OF GYPSUM BOARD OF ALL RATED STEEL STUD PARTITIONS AT TOP AND BOTTOM AND ALL PENETRATIONS.
- ACOUSTIC CAULK OUTSIDE LAYER OF GYPSUM BOARD OF ALL NON-RATED STEEL STUD PARTITIONS AT ALL PENETRATIONS.
- CAULKING OF ANY GAP OVER 6 mm MUST BE OVER ROD BACKUP.
- LOCATE ELECTRICAL BOXES ON OPPOSING FACES OF THE WALL IN SEPARATE STUD CAVITY.
- TRIM AND EXTEND THERMAL AND ACOUSTIC BATT INSULATION CONTINUOUSLY BEHIND AND AROUND ALL ELECTRICAL BOXES.
- PROVIDE SLOTTED TOP TRACK DEFLECTION HEAD AT T/O ALL STEEL STUD WALL AND PARTITION ASSEMBLIES.
- PROVIDE 20mm DEFLECTION ALLOWANCE AT T/O ALL CONCRETE BLOCK PARTITIONS.
- PACK VOID AT T/O OF ALL FIRE RATED CONCRETE BLOCK PARTITIONS WITH MINERAL WOOL AND SEAL IN PLACE WITH FIRE-STOP CAULK.
- SEAL VOID AT T/O OF ALL NON-RATED CONCRETE BLOCK PARTITIONS WITH ACOUSTIC CAULK OVER BACKER ROD.
- PROVIDE MAX. 0.50mm METAL STUDS FOR ALL INTERIOR PARTITIONS. NOTIFY ARCHITECT WHERE HEAVIER GAUGE IS NEEDED TO MEET DEFLECTIONS REQUIREMENT.
- STUD WALL REINFORCEMENT:**
 SECURE 19mm VENEER CORE PLYWOOD BLOCKING TO STUDS WITHIN THE WALL CAVITY AS REQUIRED TO ANCHOR THE FUTURE INSTALLATION OF GRAB BARS LOCATED IN ALL SUITE WASHROOMS AND INSTALL BLOCKING TO ACCOMMODATE THE FOLLOWING GRAB BAR CONFIGURATIONS:
 - 700mm TO 1500mm AFF ON ALL WALLS ADJACENT TO A WATER CLOSET EXTENDING 400mm TO 1200mm FROM WALL BEHIND THE WATER CLOSET
 - 800mm LONG x 200mm HIGH CENTERED ON THE WALL BEHIND THE WATER CLOSET AND 150mm ABOVE THE TANK
 - 850mm AFF x 200mm HIGH FULL LENGTH OF WALL OPPOSITE THE ENTRANCE TO THE SHOWER
- GRIND HIGH-POINTS AND SKIM-COAT ALL EXPOSED CONCRETE SURFACES WITH DRYWALL COMPOUND.
- MISCELLANEOUS METAL:**
 - CONTINUOUSLY WELD ALL STEEL COMPONENTS
 - FILL AND GRIND ALL STEEL CONNECTIONS SMOOTH
 - FINISH ALL EXPOSED STEEL SURFACES WITH PAINT
- USE MOISTURE RESISTANT GYPSUM BOARD ON ALL WASHROOM AND HIGH HUMIDITY AREA CEILINGS AND WALLS.
- USE GYPSUM TILE BACKER BOARD ON ALL SHOWER WALLS.
- FIRE-CAULK PERIMETER OF ALL ACOUSTIC GYPSUM BOARD PARTITIONS.
- WHERE OUTLET BOXES ARE INSTALLED BACK TO BACK, PACK CAVITY AROUND BOTH OUTLET BOXES AND SECURE ONE LAYER OF DRYWALL IN THE AIR-SPACE TO THE BACK SIDE OF ONE ROW OF STUDS. EXTEND THESE MEASURES FOR A MINIMUM RADIUS OF 600mm FROM CENTER OF EACH OUTLET BOX. IN ADDITION, PROVIDE PUTTY PADS TO ALL ELECTRICAL BOXES WHERE MORE THAN ONE ELECTRICAL BOX IS INSTALLED IN A SINGLE STUD CAVITY.
- SHIM AS REQUIRED TO PLUMB WALLS FOR ALL FURRING CHANNELS. ADJUST OTHER DIMENSION ACCORDINGLY.
- WHERE BATHTUBS ABUT A FIRE SEPARATION APPLY AN ADDITIONAL LAYER OF WATER RESISTANT GYPSUM BOARD TO PROVIDE SUBSTRATE FOR FINISHES ABOVE BATHTUB.
- TYPICAL SUITE AND CORRIDOR DEMISING WALL ACOUSTIC REQUIREMENTS:**
 - CONTINUE DEMISING WALL BETWEEN SUITES THROUGH EXTERIOR WALL STUD CAVITY TO INSIDE FACE OF EXTERIOR SHEATHING AND FIRE CAULK
 - SUITE SIDE OF CORRIDOR DEMISING WALL GYPSUM TO BE DISCONTINUOUS AT JUNCTION WITH SUITE DEMISING WALL
 - STAGGER GYPSUM LAYERS AT JOINTS
- ACCESS LADDERS MUST CONFORM TO THE REQUIREMENTS OF ENGINEERING DATA SHEET 2-04, ISSUED BY THE MINISTRY OF LABOUR.



88 Saint-Joseph Boulevard, Gatineau QC J8Y 3W5
 Tel : 819-600-1555

NOT TO CONSTRUCTION / PAS POUR CONSTRUCTION

This document and all information herein is confidential and the intellectual property of Rossmann Architecture Inc. It is disclosed in confidence on terms that it will not be disclosed to any third party, used, sold, loaned, licensed, or reproduced in whole or in any part in any manner or form for manufacturing, tending or for any other purpose without the written permission of Rossmann Architecture Inc. The copyright is retained by Rossmann Architecture Inc.

Ce document, ainsi que tous renseignements contenus à l'intérieur, est la propriété de Rossmann Architecture Inc. Il est divulgué en confiance sous les termes qu'il ne sera pas divulgué à aucun tiers, utilisé, vendu, prêté, licencié ou reproduit en tout ou en partie d'aucune manière pour la manufacture, soumission ou pour autres fins sans la permission écrite de Rossmann Architecture Inc. Le droit d'auteur est réservé par Rossmann Architecture Inc.

PROJECT TEAM / ÉQUIPE DU PROJET :
JAMES B. LENNOX & ASSOCIATES INC.
LANDSCAPE ARCHITECTS
 3332 CARLING AVE. OTTAWA, ONT. M2H 4P7 Tel: (613) 723-1168
 ONTARIO: K2H 5A5 Fax: (613) 723-3162

D.B. GRAY ENGINEERING INC.
 700 LONG POINT CIRCLE, OTTAWA, ONTARIO: K2H 1K3 Tel: (613) 425-8044
 Fax: (613) 425-8044

GGI
 605, BOULEVARD DE LA GARDIE, GATINEAU, QUÉBEC: QC J8T 9G1 Tel: (819) 243-4414
 Fax: (819) 243-4414

LCA
 15 RUE DE VALCOURT, UNITÉ 6, GATINEAU, QUÉBEC: QC J8T 9H1 Tel: (819) 243-4474
 Fax: (819) 243-4474

KEY PLAN / PLAN CLÉ :



CLIENT :



revision	description	date
1.5	ISSUED FOR 66 %	24-07-12
1.4	ISSUED FOR SPA	24-06-05
1.3	ISSUED FOR SPA	24-02-15
1.1	ISSUED FOR 33%	23-07-19
1.0	ISSUED FOR FEASIBILITY	23-06-02

PROJECT NAME / NOM DU PROJET :

193 Notice

193 Notice St. Nepean, ON K2G 2Y5

DRAWING NAME / NOM DU DESSIN :

GENERAL CROSS SECTIONS

DRAWING INFORMATION / INFORMATION DU DESSIN :

PROJECT NO. / NO. DE PROJET : **23058**
 DATE : **23/06/05**
 DRAWN BY / DESSINÉ PAR : **SB**
 REVIEWED BY / VÉRIFIÉ PAR : **LG**
 SCALE / ÉCHELLE : **As indicated**
 PROJECT PHASE / PHASE DU PROJET : **2**
 DWG NO. / NO. DESSIN :

A300

REVISION NO. / NO. DE RÉVISION : **1.5**